

CASIO®

SERVICE MANUAL

& PARTS LIST (without price)

PX-720/PX-720C

SEP. 2007



PX-720C

ELECTRONIC KEYBOARD

Ver. 6 : Oct. 2015

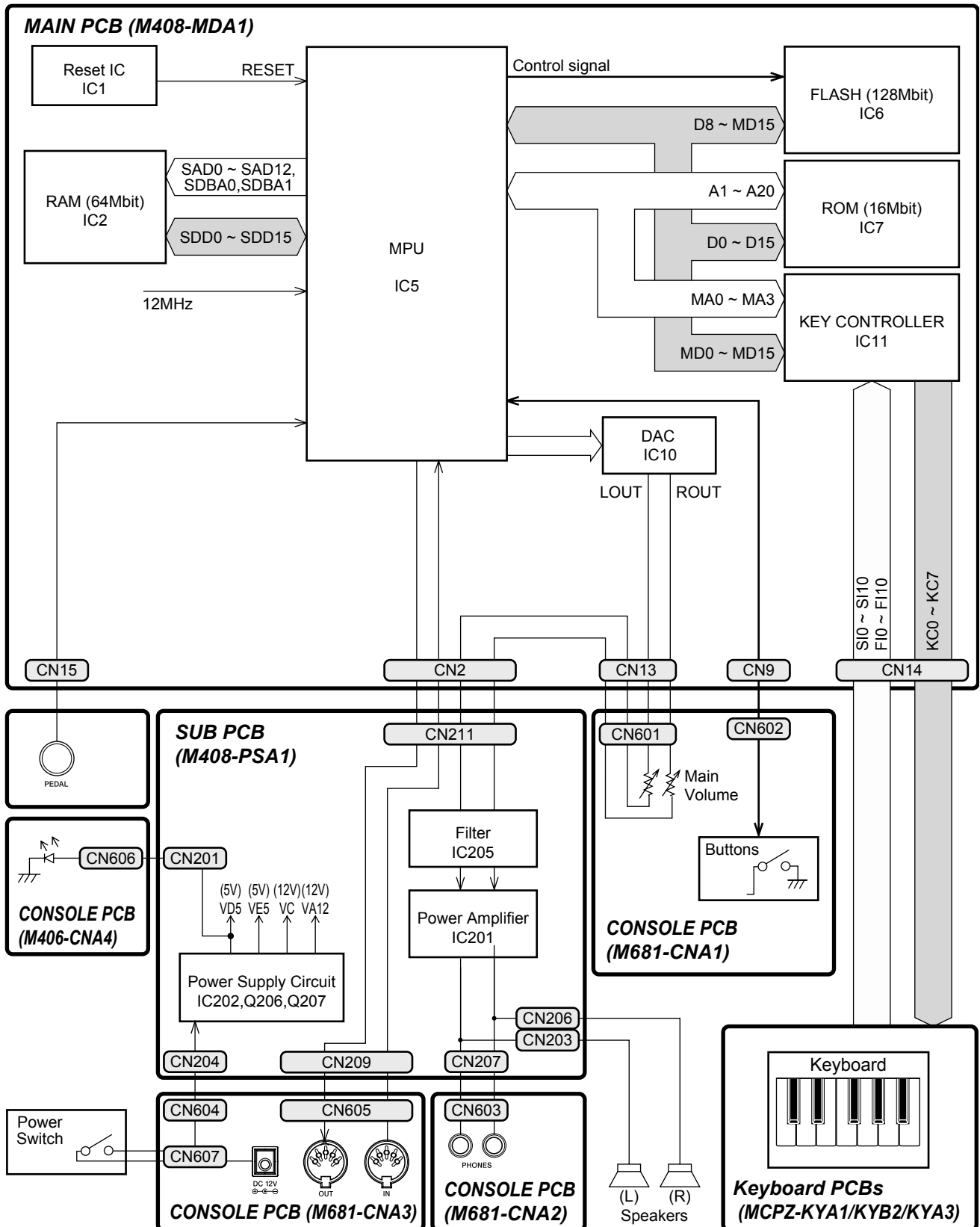
CONTENTS

SPECIFICATIONS-----	1
BLOCK AND WIRING DIAGRAM -----	2
PCB LAYOUT -----	3
CIRCUIT DESCRIPTION -----	4
PRINTED CIRCUIT BOARDS -----	5
DISASSEMBLY -----	7
DIAGNOSTIC PROGRAM -----	18
EXPLODED VIEW -----	21
PARTS LIST -----	23
SCHEMATIC DIAGRAMS-----	27

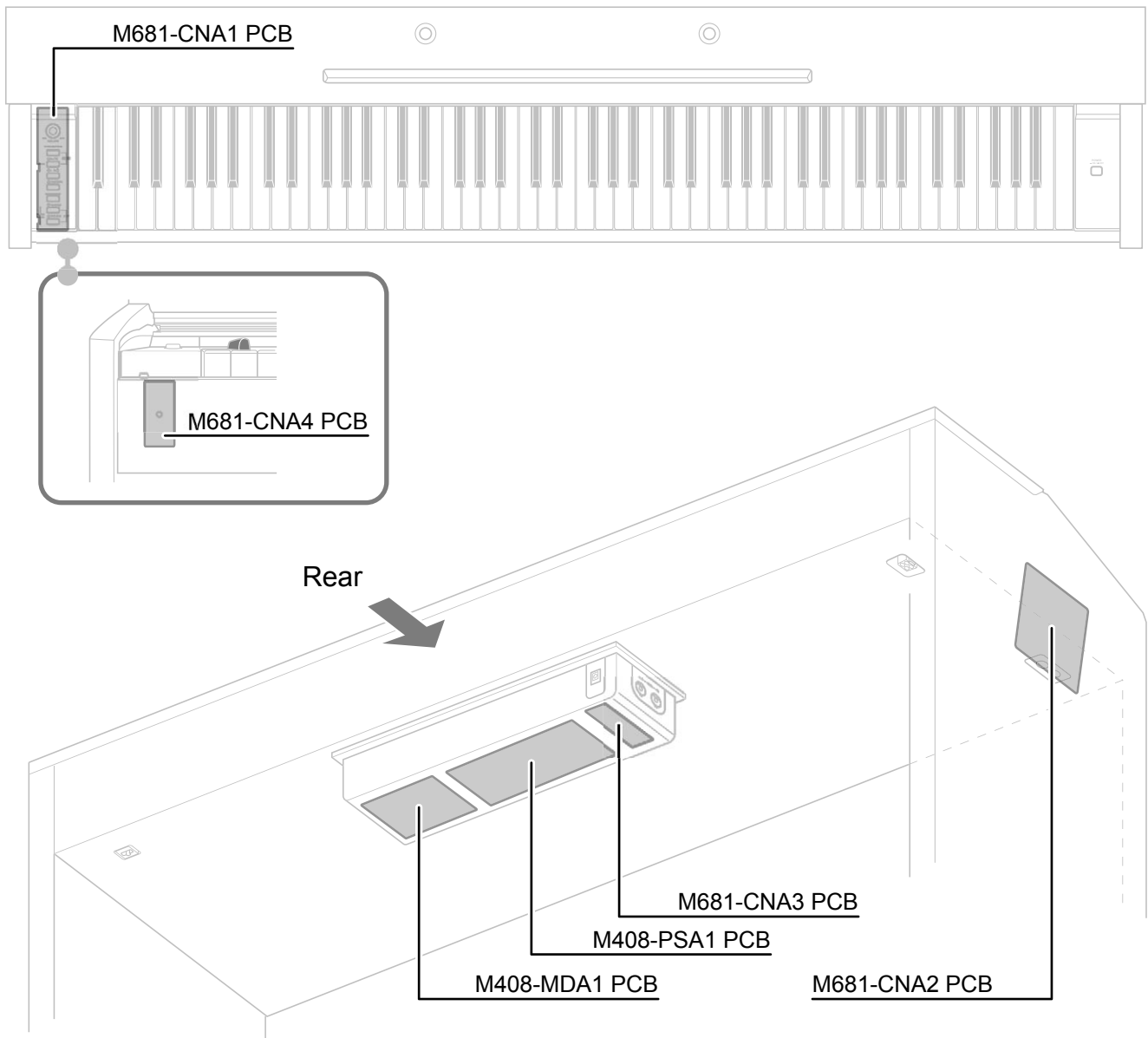
SPECIFICATIONS

Keyboard:	88-key piano keyboard, with Touch Response
Maximum Polyphony:	128 notes
Tones:	11 <ul style="list-style-type: none">• Layer (excluding bass tones)• Split (Low-range bass tones only)
Effects:	Brilliance (-3 to +3), Reverb (4 types), chorus (4 types), Acoustic Resonance
Metronome:	<ul style="list-style-type: none">• Beats: 0, 2, 3, 4, 6• Tempo Range: 20 to 255
Duet:	Adjustable tone range (-1 to +2 octaves)
Music Library:	<ul style="list-style-type: none">• Number of Songs: 60• Song volume: Adjustable• Part On/Off: L, R
Recorder:	<ul style="list-style-type: none">• Functions: Real-time recording, playback• Number of Song: 1• Number of Tracks: 2• Capacity: Approximately 5,000 notes total• Recorded Data Protection: Built-in flash memory
Pedals:	Damper, soft, sostenuto
Other Functions:	<ul style="list-style-type: none">• Touch Select: 3 types, Off• Transpose: 2 octaves (-12 to 0 to 12)• Tuning: A4 = 440.0 Hz \pm99 cents (variable)• Operation Lock
MIDI:	16-channel multi-timbre receive
Inputs/Outputs:	<ul style="list-style-type: none">• PHONES jack: Stereo standard jacks \times 2 Output impedance: 170Ω Output Voltage: 5.6V (RMS) MAX• Power: 12V DC• MIDI OUT/IN terminals• Pedal connector
Speakers:	ϕ 12cm \times 2 (Output 8W + 8W)
Power Requirements:	AC Adaptor: AD-12
Power Consumption:	12V \approx 18W
Dimensions:	Digital Piano and Stand: 137.1 (W) \times 29.8 (D) \times 79.2 (H) cm (54 \times 11 $\frac{3}{4}$ \times 31 $\frac{3}{16}$ inch)
Weight:	Digital Piano and Stand: approximately 32.0 kg (70.5 lbs)

BLOCK AND WIRING DIAGRAM



PCB LAYOUT



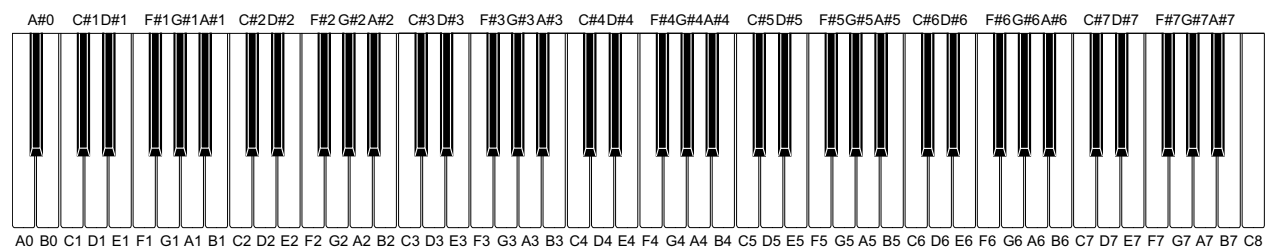
	PCB	Components
MAIN PCB	M408-MDA1	MPU, Reset IC, RAM(64Mbit), FLASH memory(128Mbit), ROM(16Mbit), DAC, Key controller
SUB PCB	M408-PSA1	Power supply circuit, Filter, Power amplifier
Console PCBs	M681-CNA1	Button, Main volume
	M681-CNA2	Phones jack
	M681-CNA3	DC 12V terminal, MIDI OUT/IN terminals
	M681-CNA4	Power lamp

CIRCUIT DESCRIPTION

KEY MATRIX

	KC0	KC1	KC2	KC3	KC4	KC5	KC6	KC7
FI0	A0①	A0#①	B0①	C1①	C1#①	D1①	D1#①	E1①
SI0	A0②	A0#②	B0②	C1②	C1#②	D1②	D1#②	E1②
FI1	F1①	F1#①	G1①	G1#①	A1①	A1#①	B1①	C2①
SI1	F1②	F1#②	G1②	G1#②	A1②	A1#②	B1②	C2②
FI2	C2#①	D2①	D2#①	E2①	F2①	F2#①	G2①	G2#①
SI2	C2#②	D2②	D2#②	E2②	F2②	F2#②	G2②	G2#②
FI3	A2①	A2#①	B2①	C3①	C3#①	D3①	D3#①	E3①
SI3	A2②	A2#②	B2②	C3②	C3#②	D3②	D3#②	E3②
FI4	F3①	F3#①	G3①	G3#①	A3①	A3#①	B3①	C4①
SI4	F3②	F3#②	G3②	G3#②	A3②	A3#②	B3②	C4②
FI5	C4#①	D4①	D4#①	E4①	F4①	F4#①	G4①	G4#①
SI5	C4#②	D4②	D4#②	E4②	F4②	F4#②	G4②	G4#②
FI6	A4①	A4#①	B4①	C5①	C5#①	D5①	D5#①	E5①
SI6	A4②	A4#②	B4②	C5②	C5#②	D5②	D5#②	E5②
FI7	F5①	F5#①	G5①	G5#①	A5①	A5#①	B5①	C6①
SI7	F5②	F5#②	G5②	G5#②	A5②	A5#②	B5②	C6②
FI8	C6#①	D6①	D6#①	E6①	F6①	F6#①	G6①	G6#①
SI8	C6#②	D6②	D6#②	E6②	F6②	F6#②	G6②	G6#②
FI9	A6①	A6#①	B6①	C7①	C7#①	D7①	D7#①	E7①
SI9	A6②	A6#②	B6②	C7②	C7#②	D7②	D7#②	E7②
FI10	F7①	F7#①	G7①	G7#①	A7①	A7#①	B7①	C8①
SI10	F7②	F7#②	G7②	G7#②	A7②	A7#②	B7②	C8②

NOMENCLATURE OF KEYS

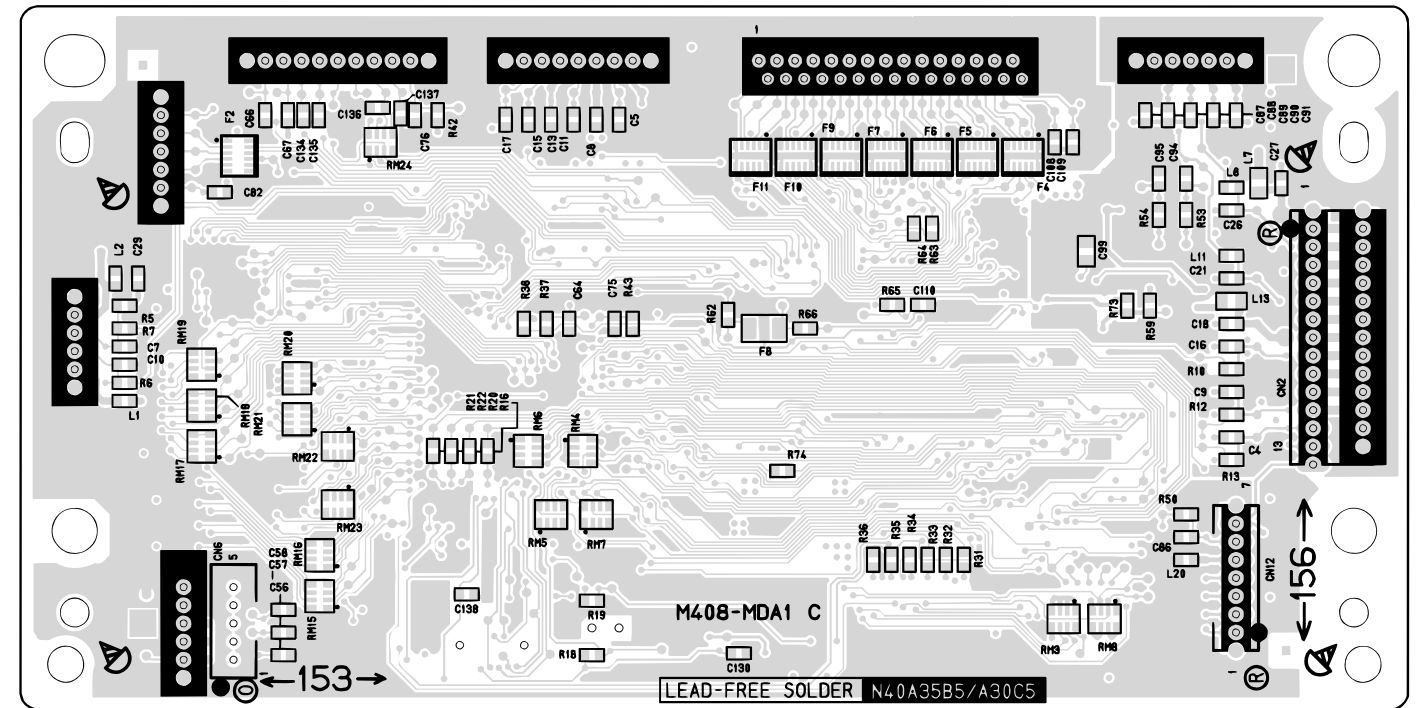
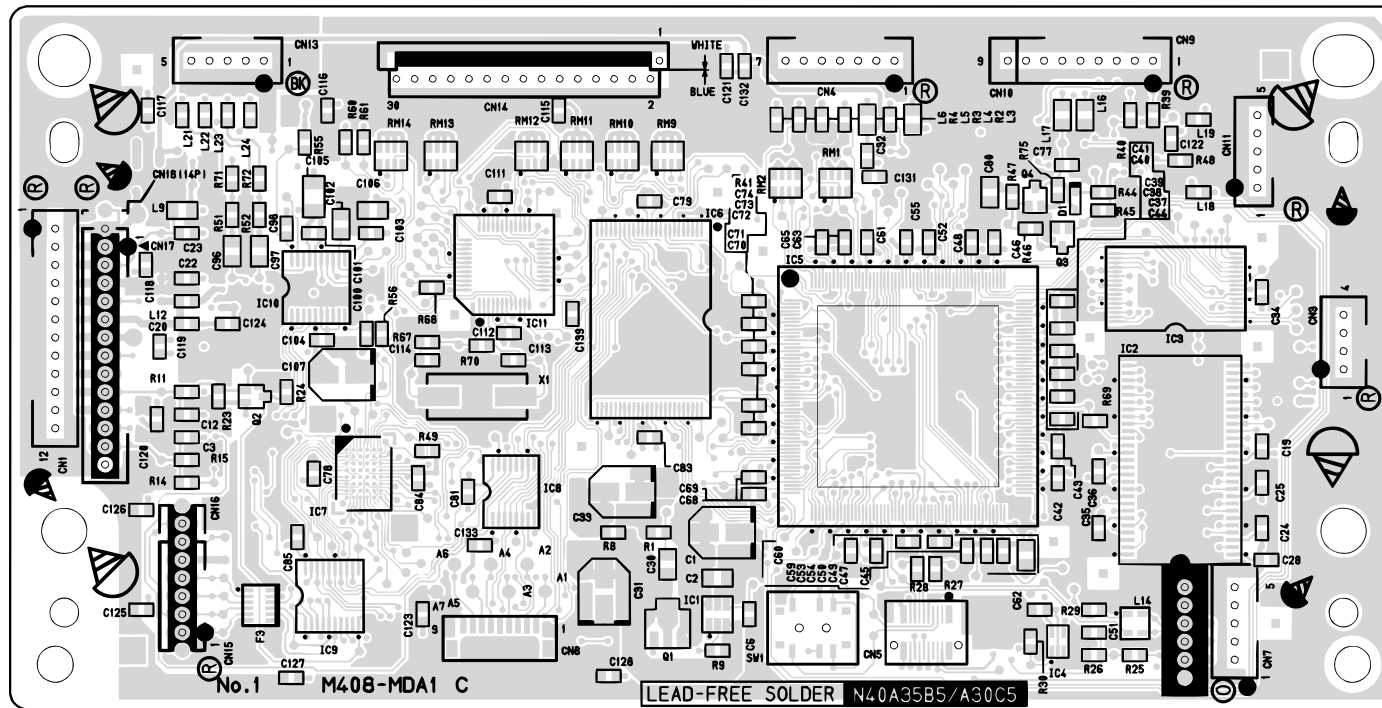


BUTTON MATRIX

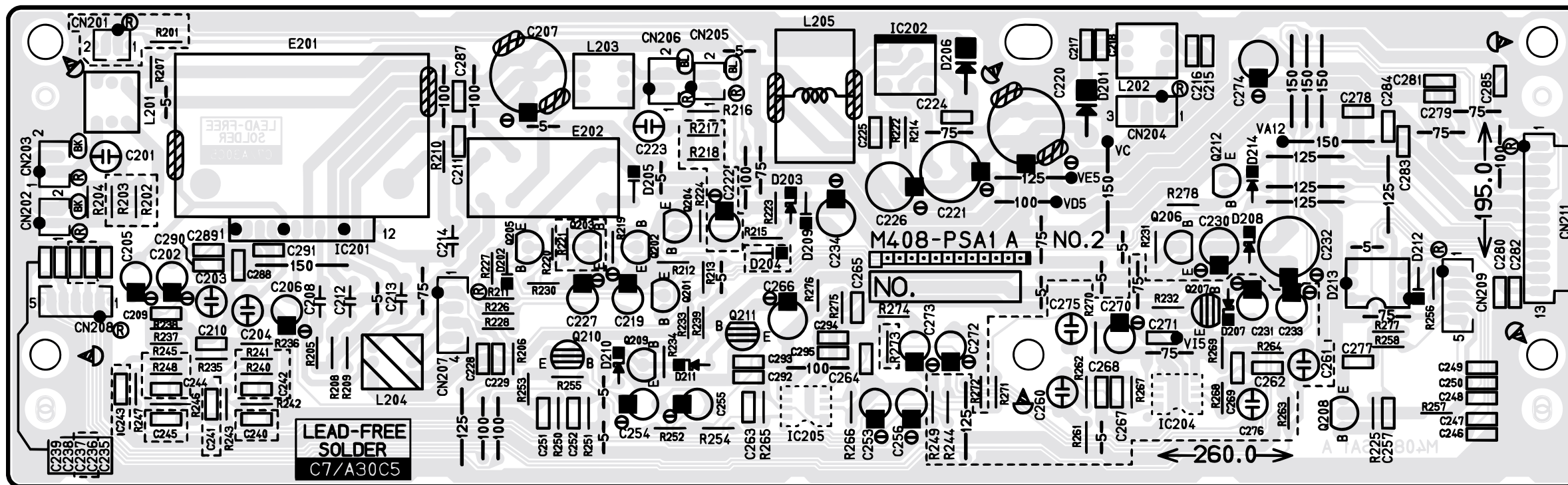
	SWB	SWC	SWD	SWE
SI0	SONG ▶/■	MODERN	METRONOME	
SI1	L / R	RECORDER	CLASSIC	STONE/ SETTING

PRINTED CIRCUIT BOARDS

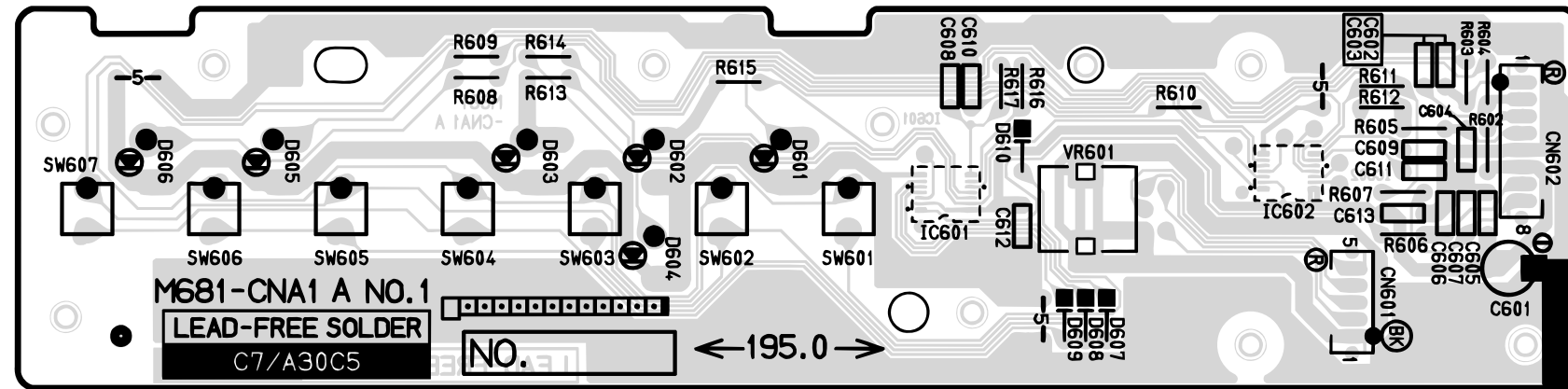
Main PCB M408-MDA1



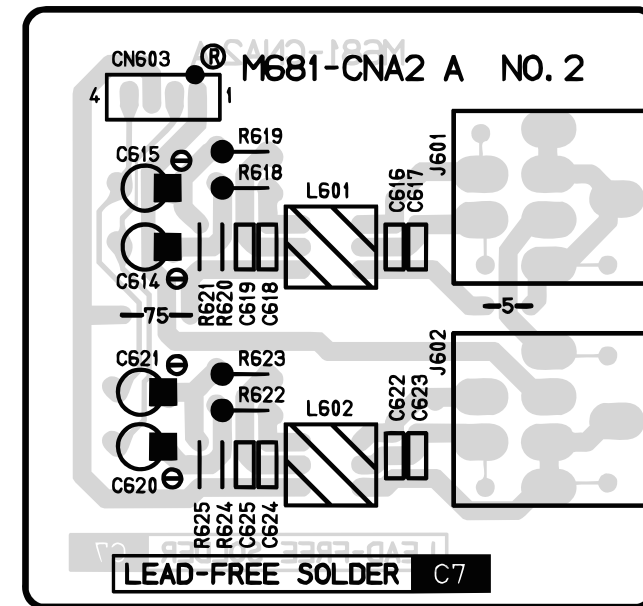
Sub PCB M408-PSA1



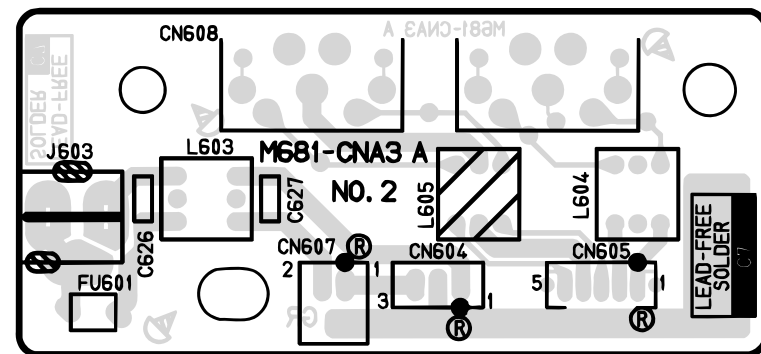
Console PCB M681-CNA1



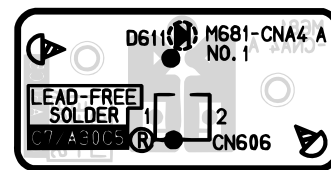
Console PCB M681-CNA2



Console PCB M681-CNA3



Console PCB M681-CNA4



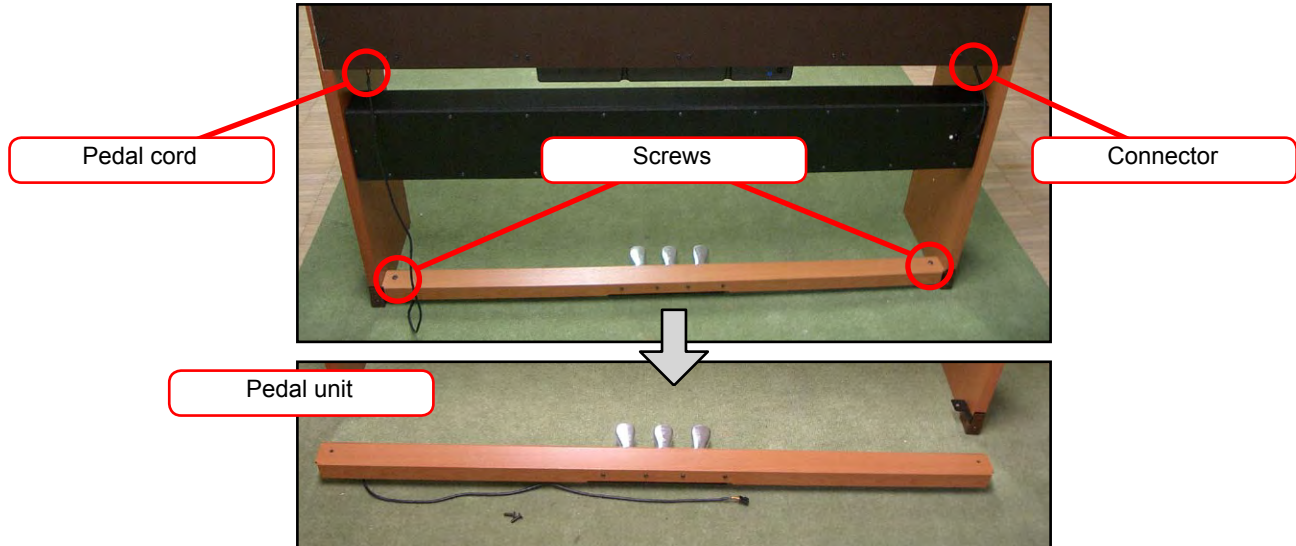
DISASSEMBLY

■ To remove main body and speaker box.

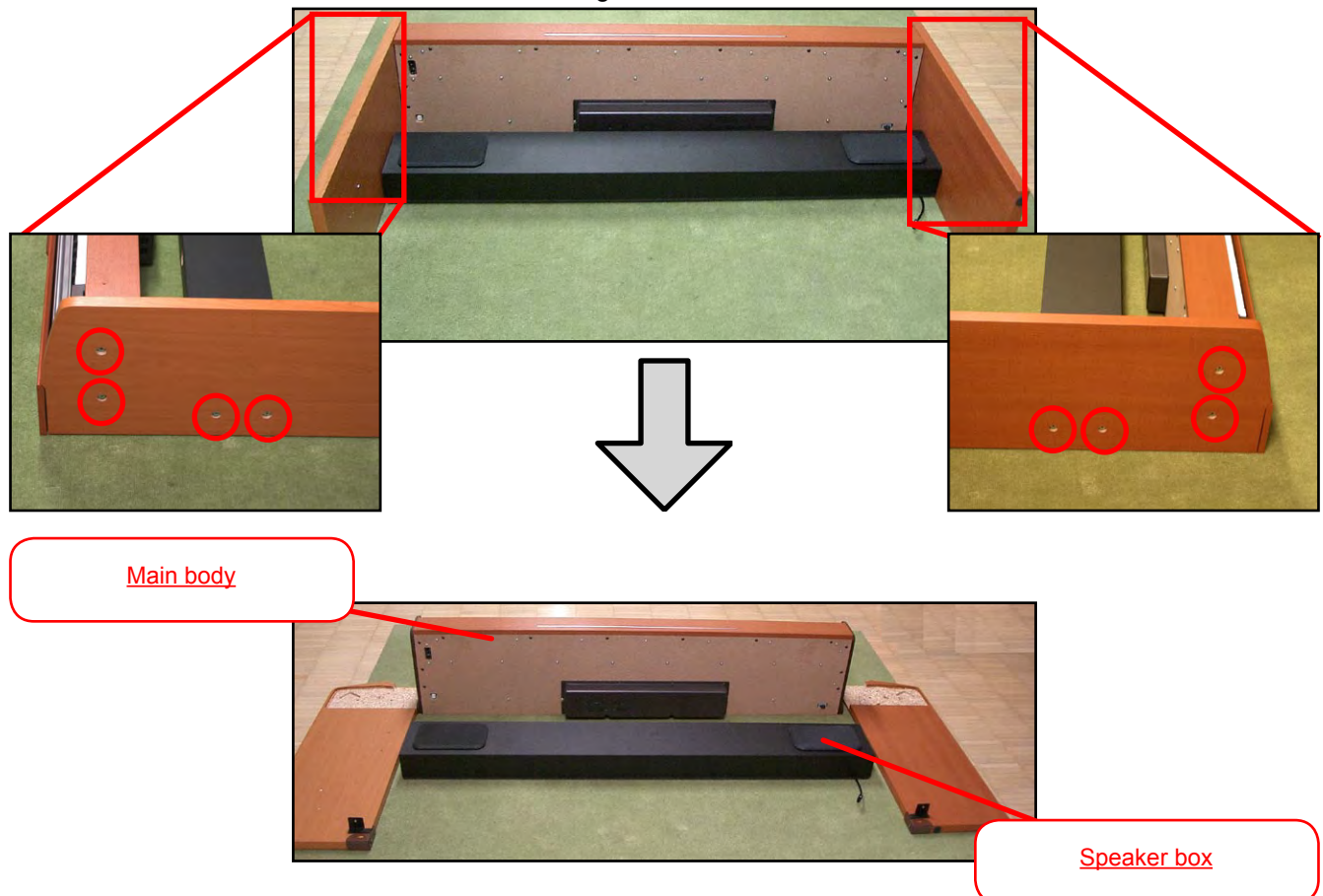
*The screws come with the cap.

*Do not forget to attach the screw caps when assembling.

1. Remove the Connector and Pedal cord.
2. Remove 2 screws and then the Pedal unit

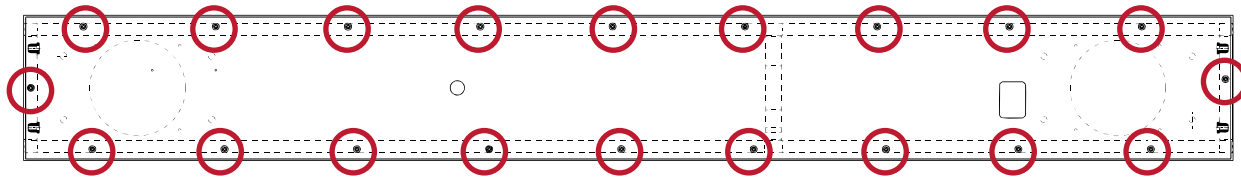


3. To damage neither the floor nor the main body, the main body is put on the mat or the blanket, etc.
4. Remove 8 screws and take off the left and right outer side covers.

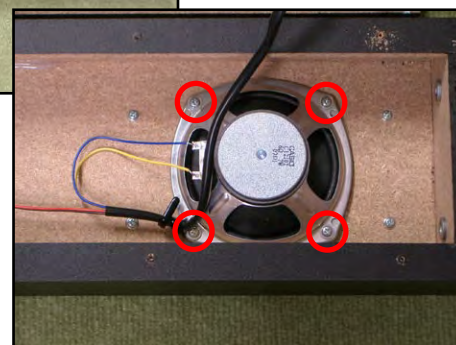
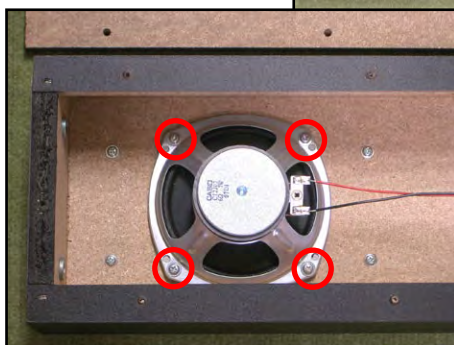
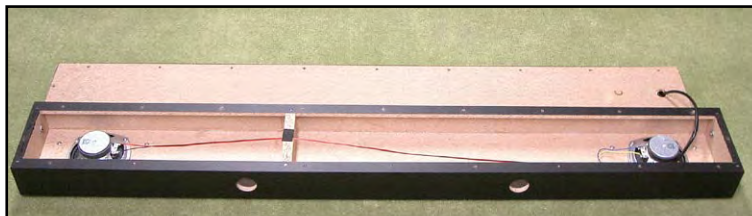


■ Speaker box disassembly

1. Remove the 20 screws and then the back of the speaker box.

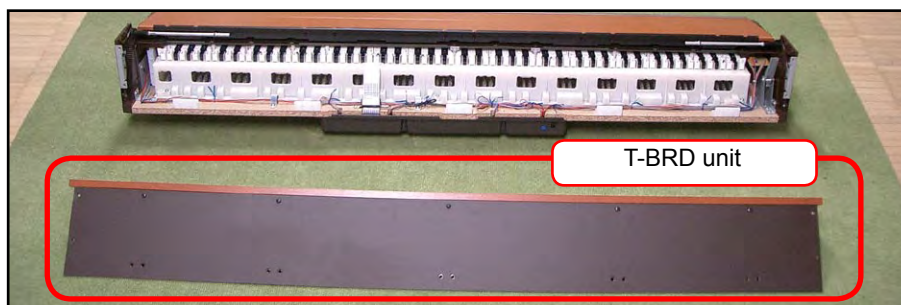
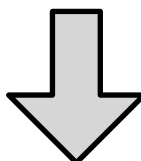
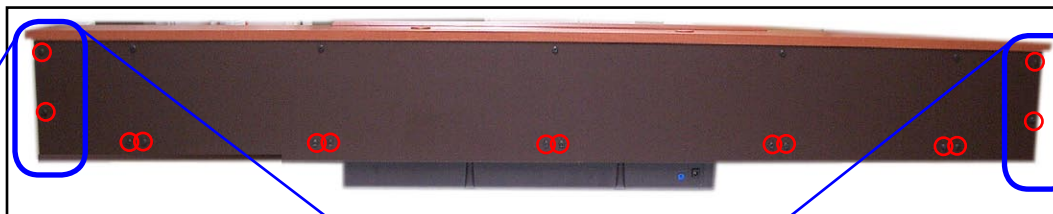


2. Remove the 4 screws for each speaker and then take out the speakers (left and right).



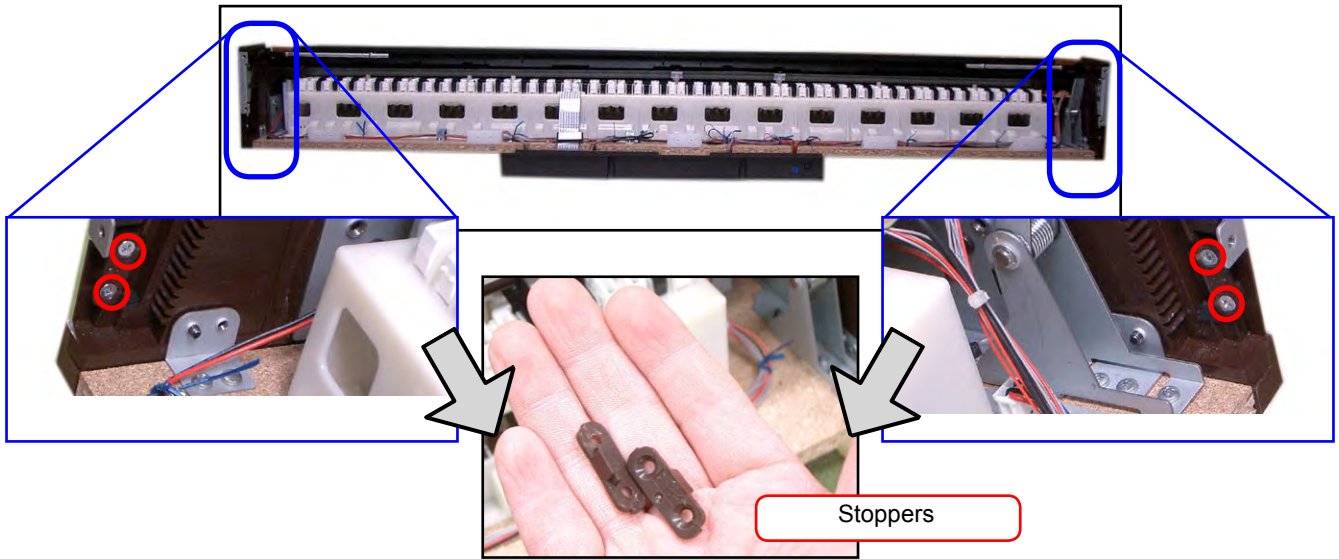
■ Removing the T-BRD-UNIT.

1. Remove 18 screws and then the T-BRD unit.



■ Removing the Key cover.

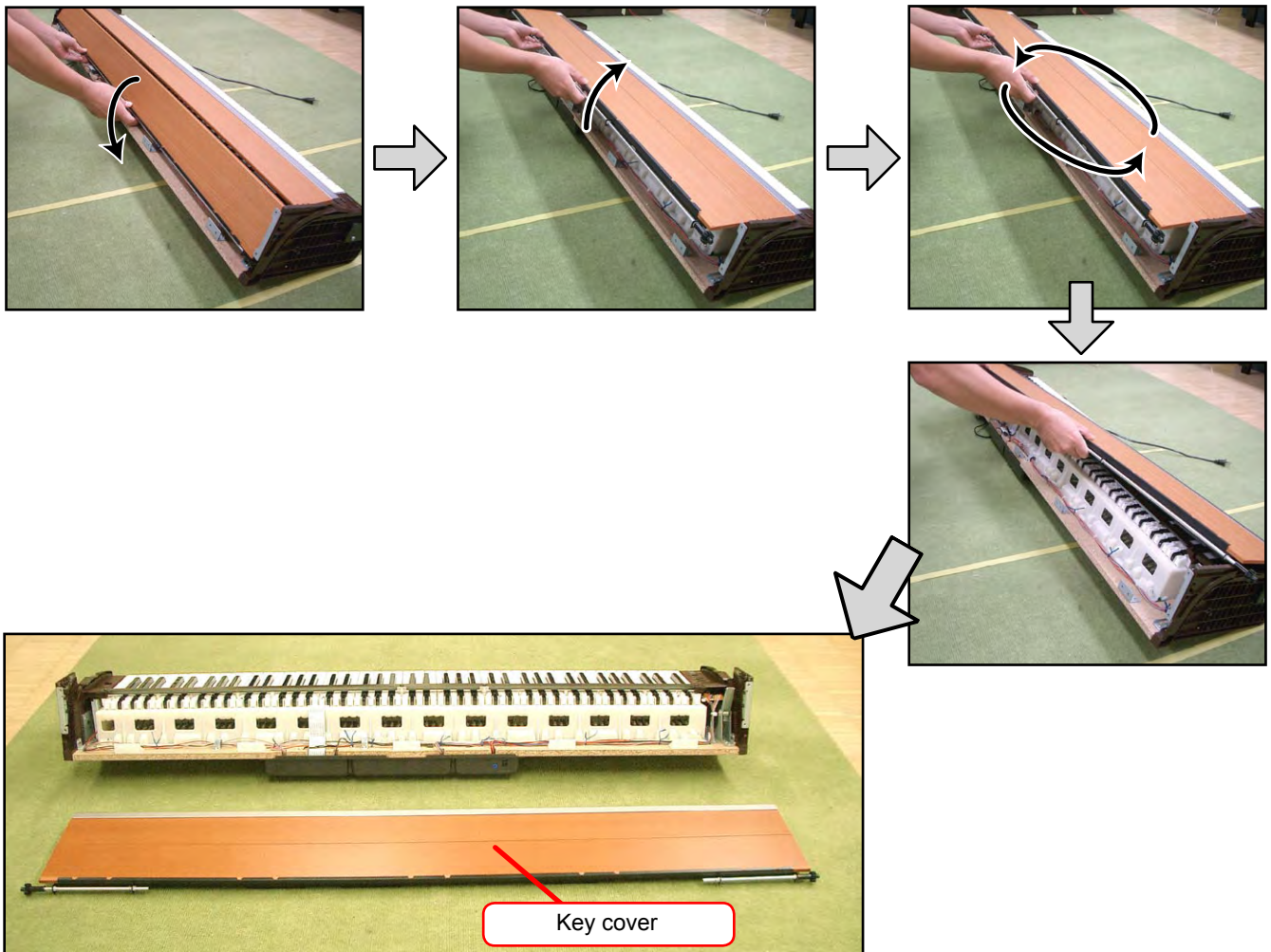
1. Remove the 4 screws and the 2 stoppers on the left and right ends.



Precautions During Assembly

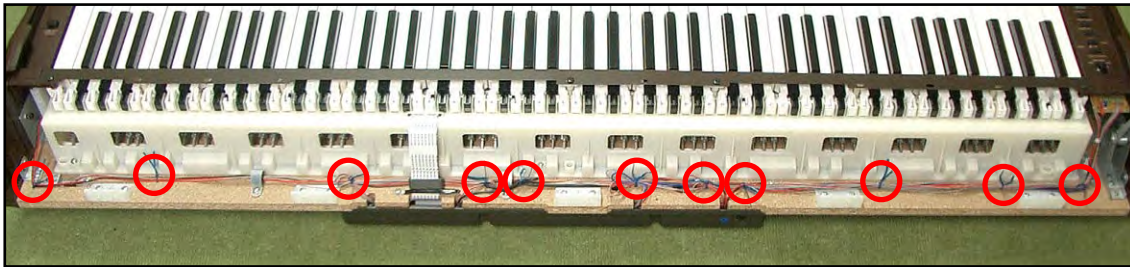
To avoid any risk of damaging the stoppers during installation, do not use an electric screwdriver.

2. Remove the key cover.

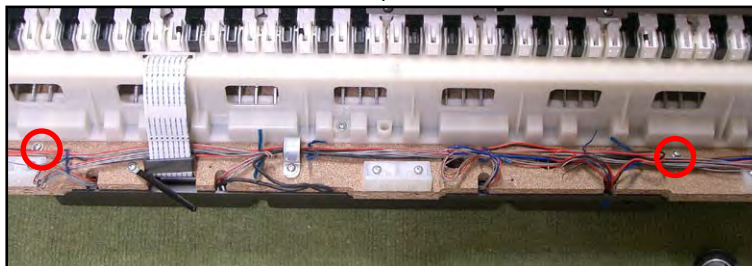
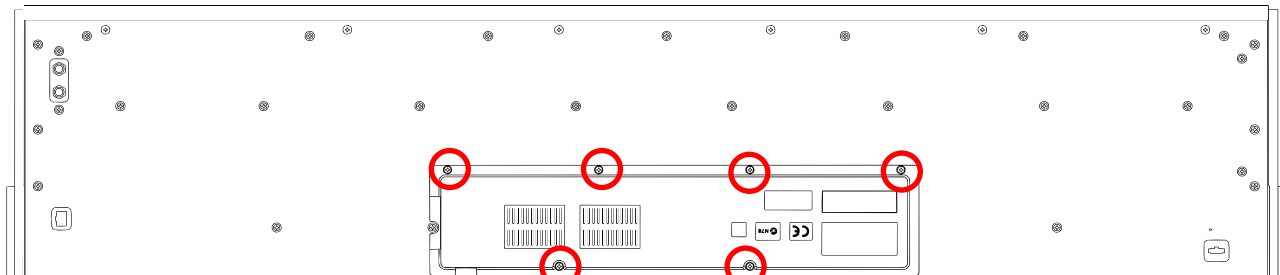


■ Removing the PCBs (M408-MDA1 PCB, M408-PSA1 PCB, M681-CNA3 PCB).

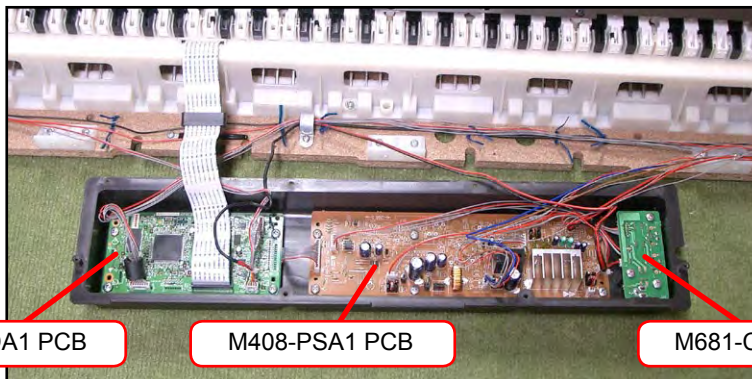
1. Remove the twist ties that hold the cables in place.



2. Remove 8 screws



3. Remove the PCB case.

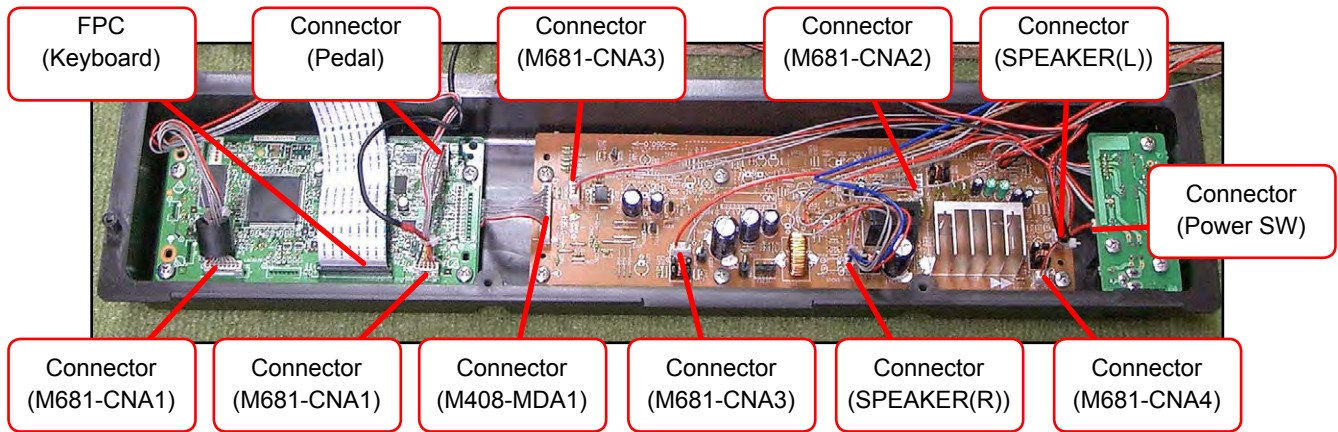


M408-MDA1 PCB

M408-PSA1 PCB

M681-CNA3 PCB

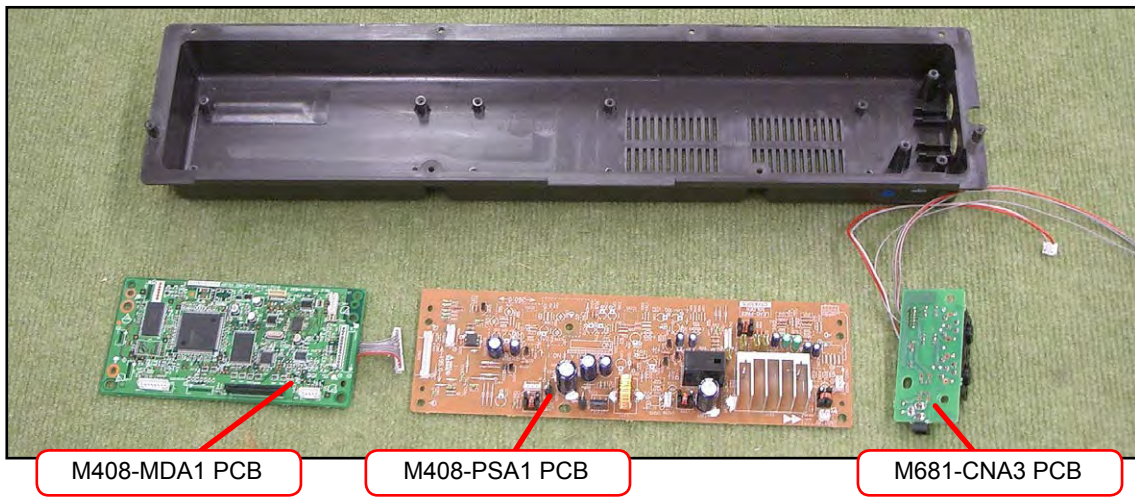
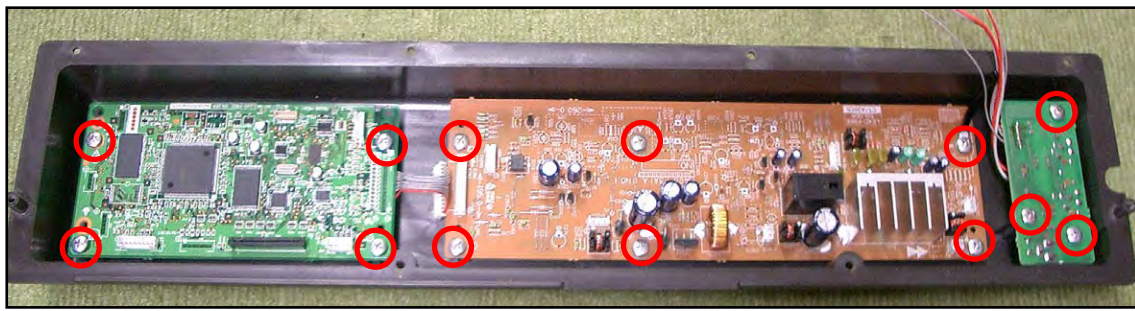
4. Remove the 11 connectors, release the lock and then remove the FPC.



5. Remove 4 screws and the M408-MDA1 PCB.

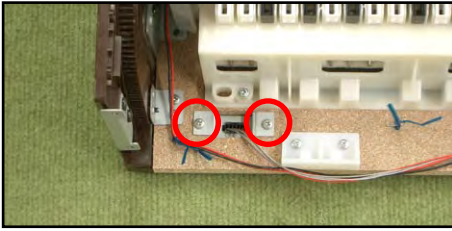
6. Remove 6 screws and the M408-PSA1 PCB.

7. Remove 3 screws and the M681-CNA3 PCB.



■ Removing the Pedal connector.

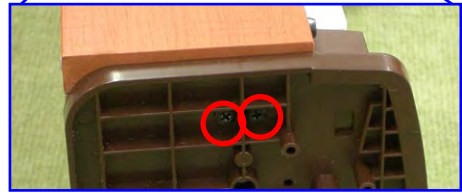
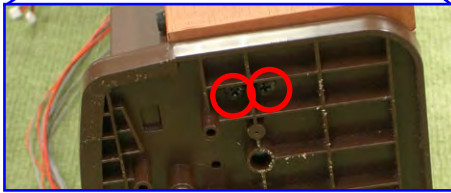
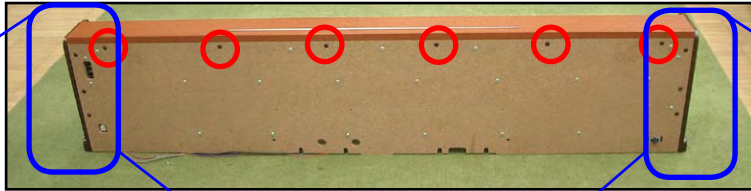
1. Remove 2 screws and then the Pedal connector.



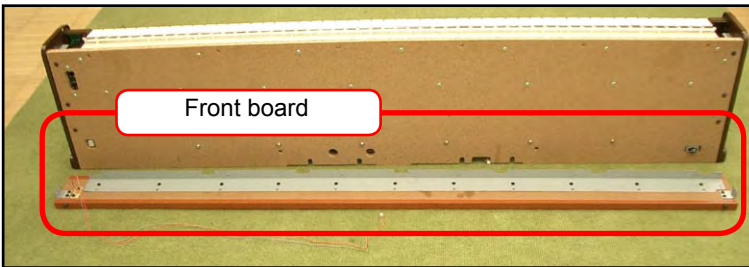
■ Removing the Front board.

1. Remove the 10 screws and lift up the front board.

* The panel is still connected by a lead.

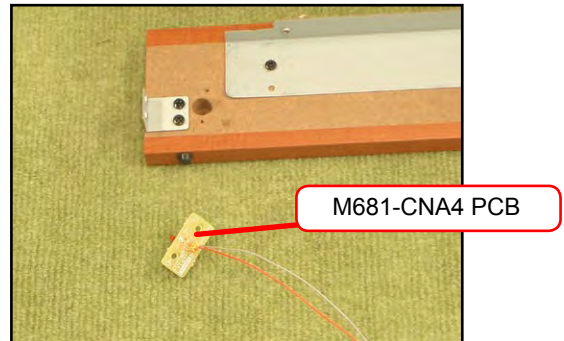
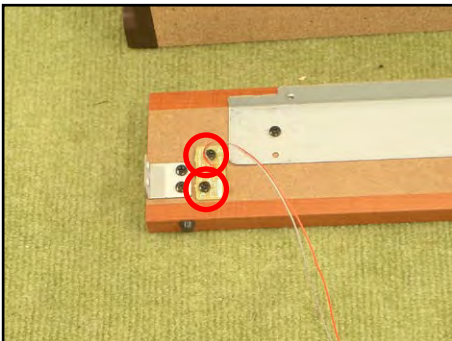


2. Remove the front board.



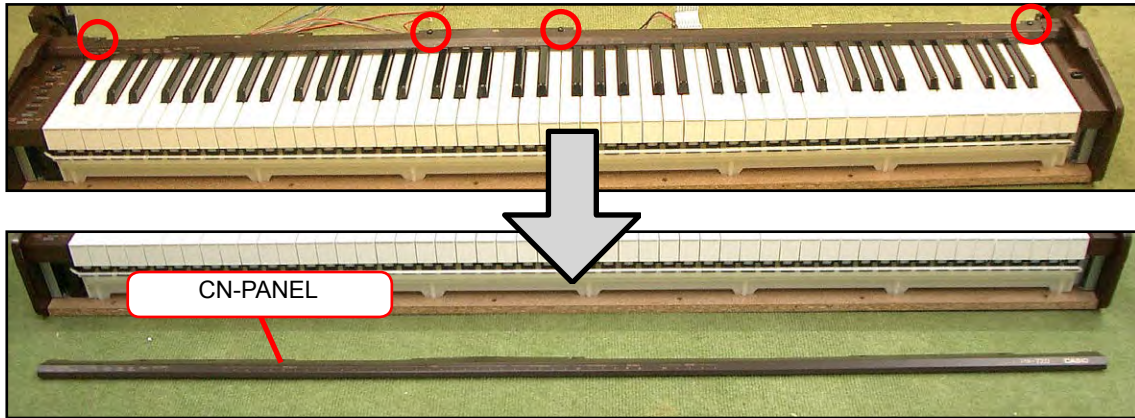
■ Removing the M681-CN4 PCB.

1. Remove 2 screws and the M681-CNA4 PCB.



■ To remove the CN-PANEL

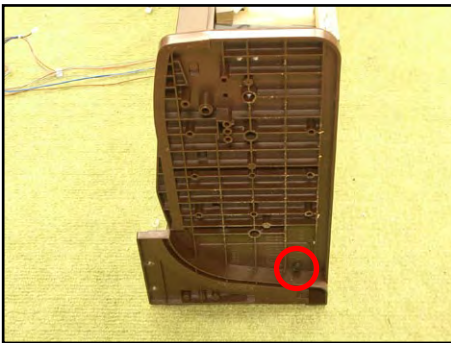
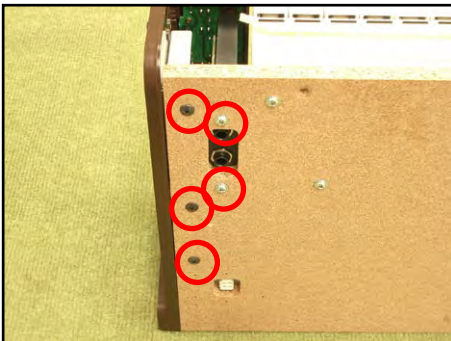
2. Remove 4 screws and the CN-PANEL.



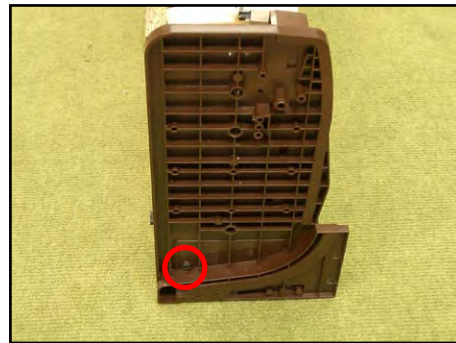
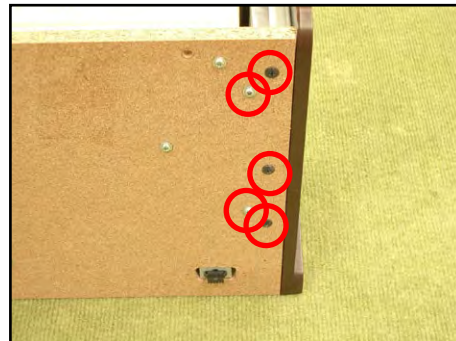
■ Removing the Side block

1. Remove the 6 screws.(left and right).

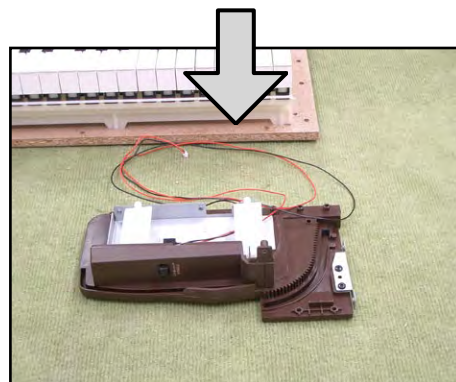
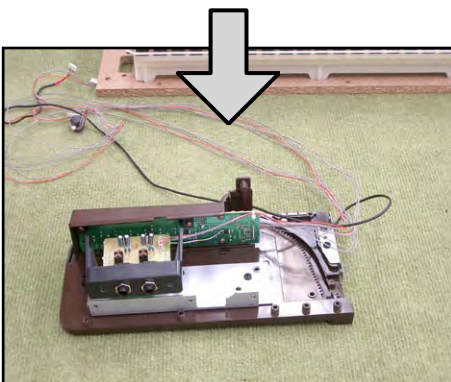
<The left side>



<The right side>

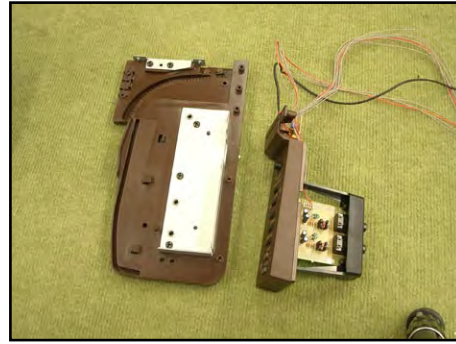
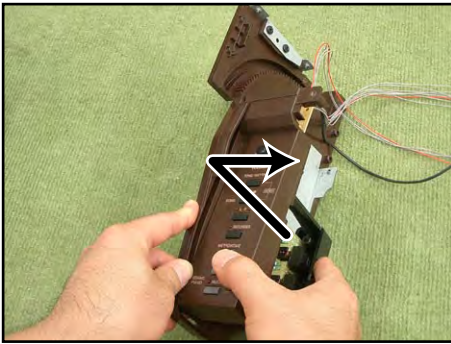


2. Remove the side units (left and right).



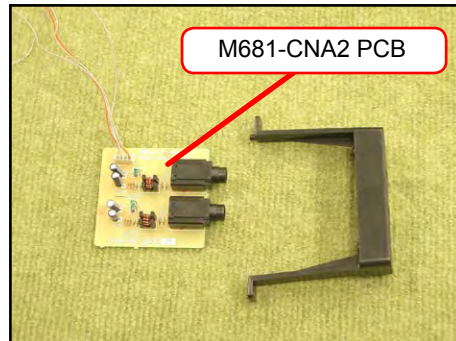
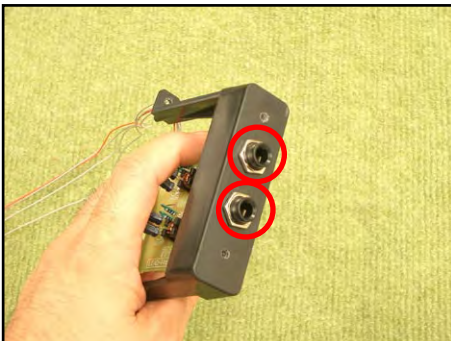
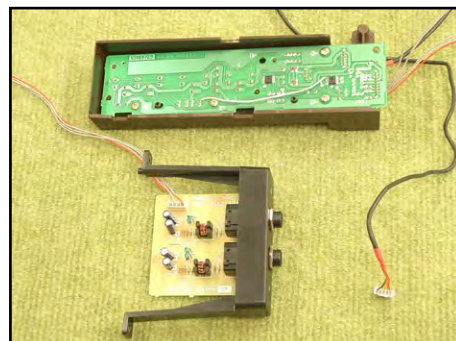
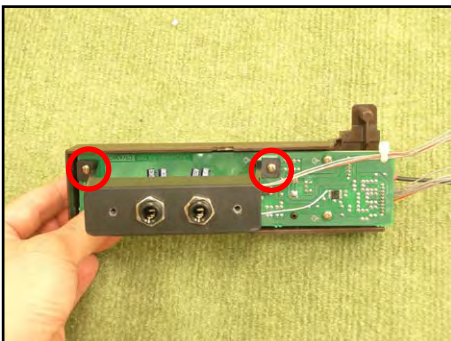
■ Disassembling the left side unit (M681-CNA1 PCB, M681-CNA2PCB)

1. Remove the side case.



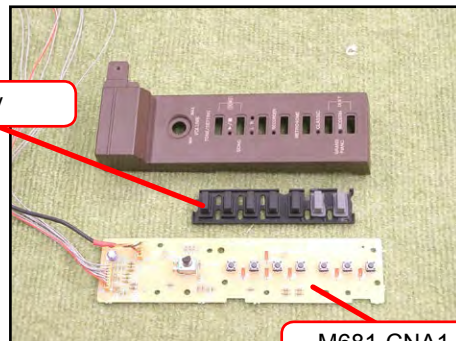
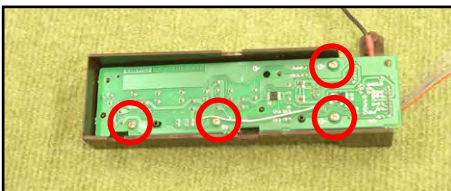
2. Remove 2 screws and the M681-CNA2 unit.

3. Remove 2 nuts and the M681-CNA2 PCB.



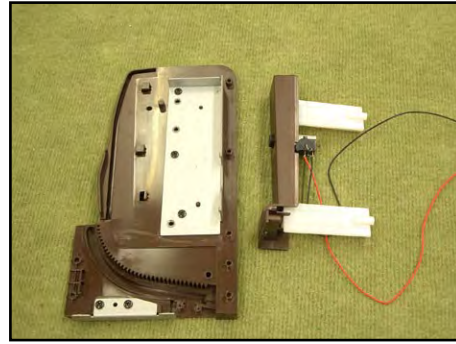
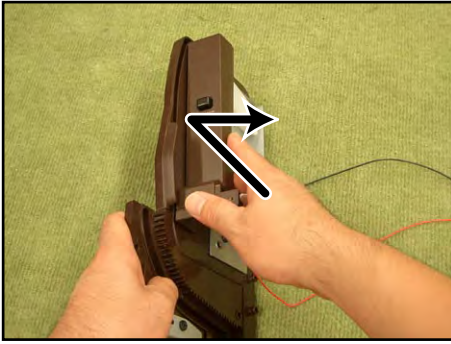
4. Remove 4 screws.

5. Remove the volume knob and the rubber key and M681-CNA1 PCB.

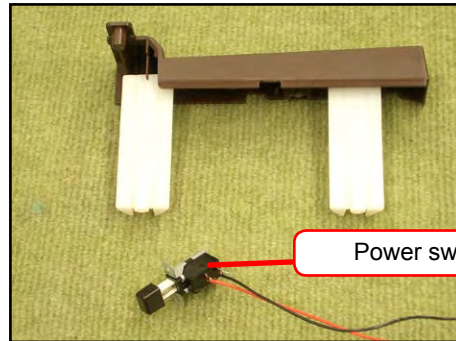
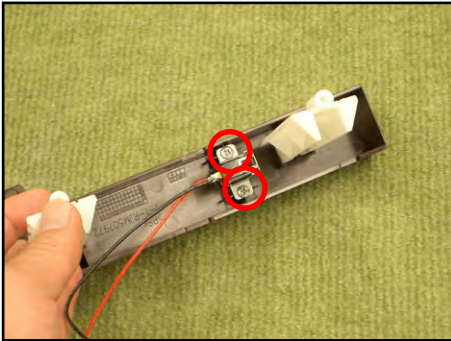


■ Disassembling the right side unit (Power switch)

1. Remove the side case.

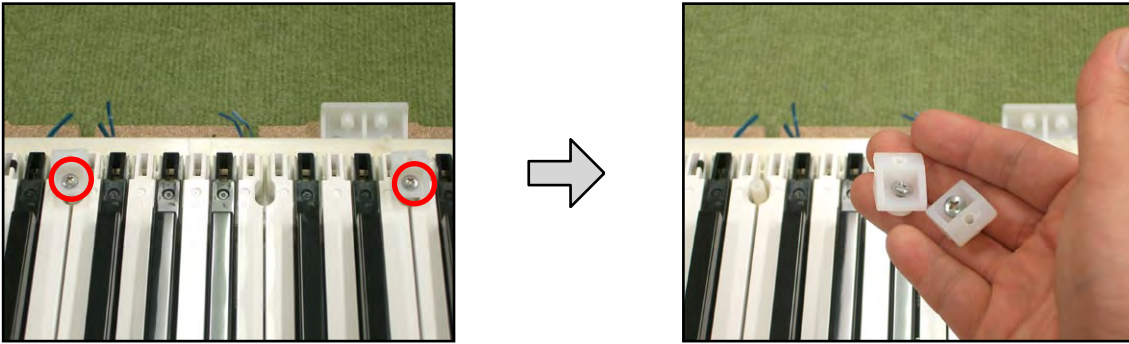


2. Remove 2 screws and the Power switch.

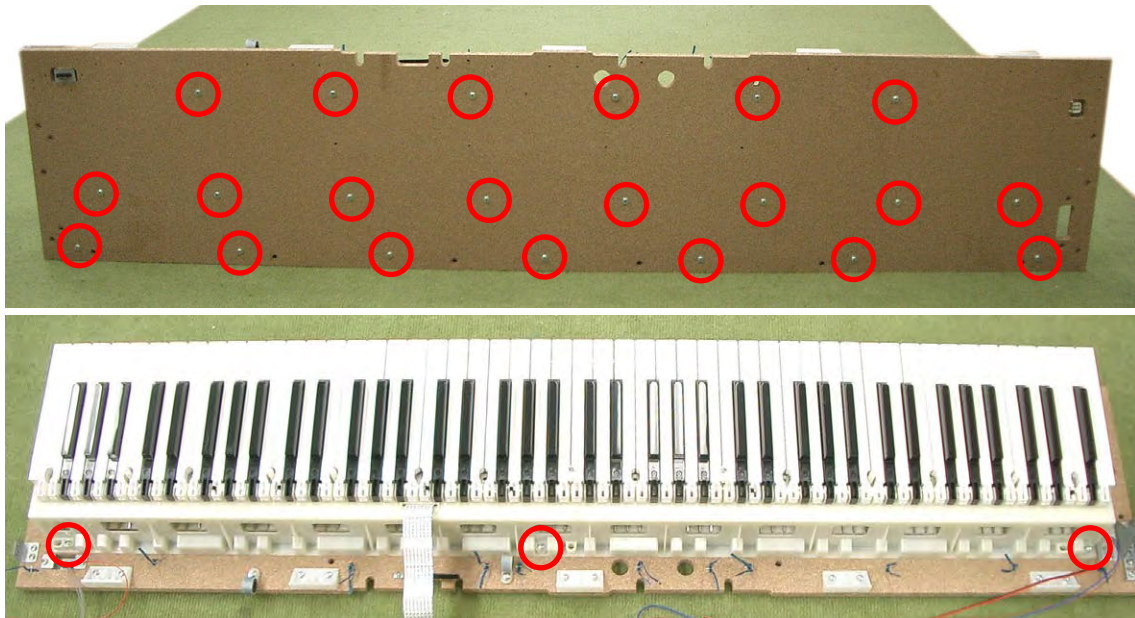


■ To remove the Keyboard

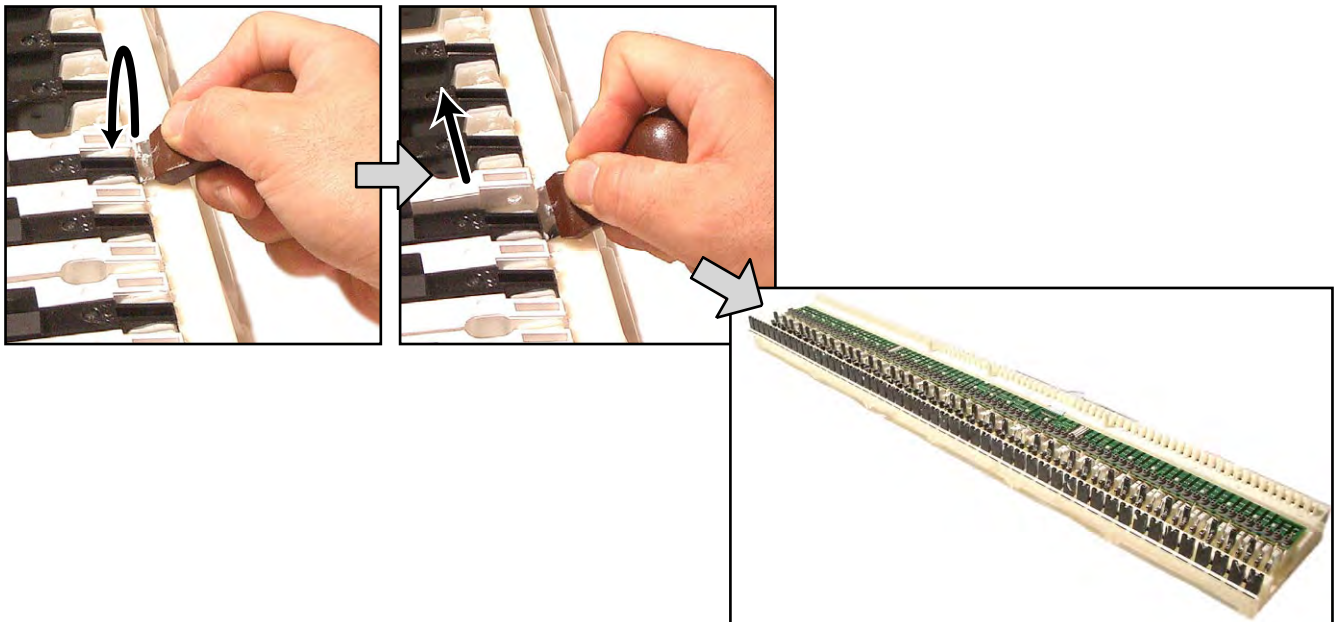
1. Remove 2 screws and then 2 brackets



2. Remove 24 screws and then the KEY-BOARD ASSY.

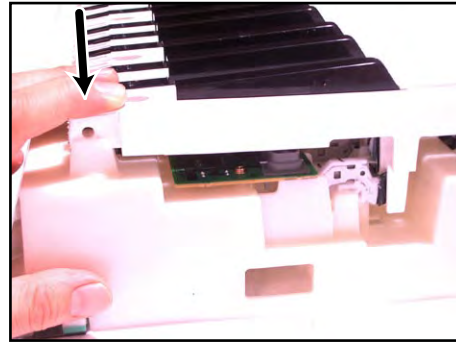
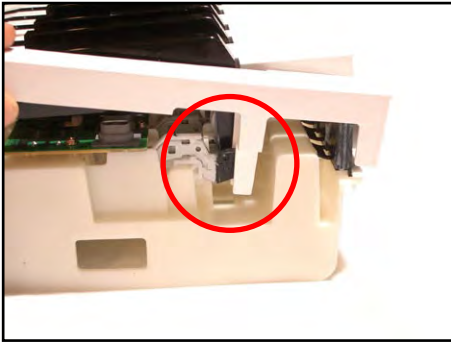


3. Remove the keys.



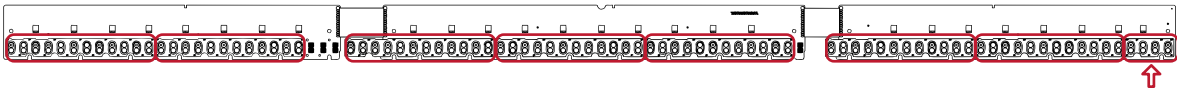
Caution while assembling the keys.

- Set the key as shown in figures below.

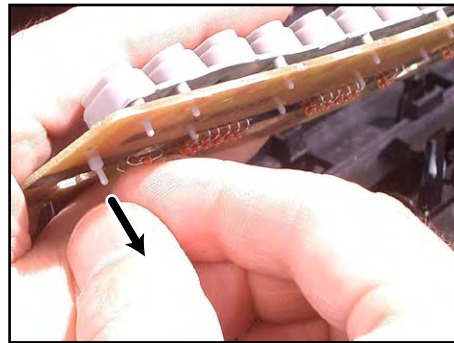


4. Remove 8 rubber keys.

- * One of the keys has the different length from others.



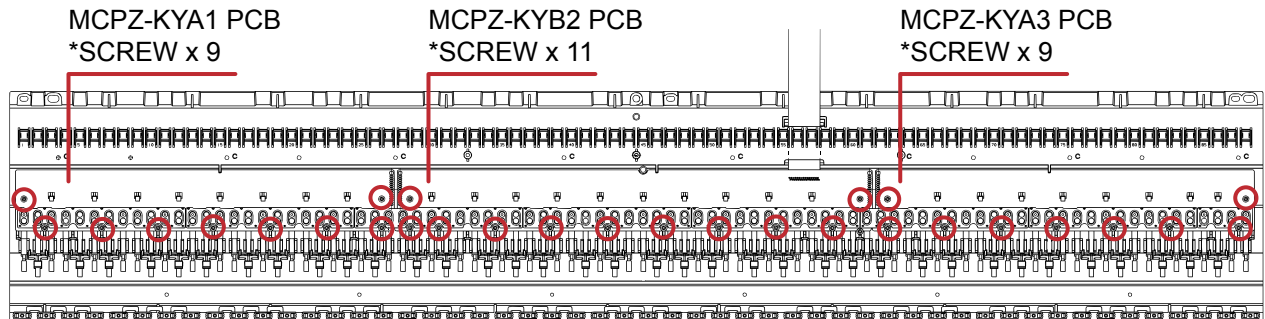
How to install the rubber keys.



5. Remove 9 screws then the MCPZ-KYA1 PCB.

6. Remove 11 screws then the MCPZ-KYB2 PCB.

7. Remove 9 screws then the MCPZ-KYA3 PCB.



DIAGNOSTIC PROGRAM

■ Initial Setting

1. Connect the AC adaptor.
2. Connect the pedal.
NOTE: If there is no pedal, pedal check can be skipped.
3. "Main" volume: MAX

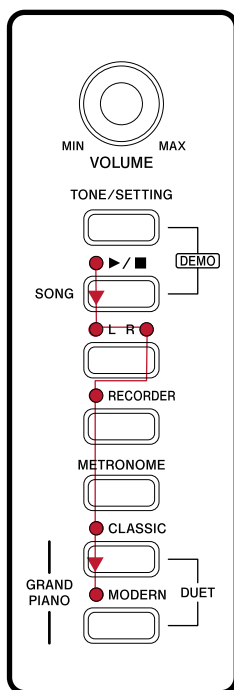
■ How to start diagnostic program

1. While pressing down "METRONOME", "RECORDER", and "▶/■" buttons at the same time, turn the power ON.
* Wait for confirmation chords C4, E4, G4 sound.
2. Release "METRONOME", "RECORDER", and "▶/■" buttons

■ Diagnostic program

1. Automatic Test

- ① RAM check
- ② ROM check
"L / R" or "▶/■" lights when an error is found in ROM.
- ③ LED check
The LEDs light in thesequence shown below



2. MODEL check

- ① Press "TONE/SETTING" button to perform the "MODEL check."
The confirmation chords C4, E4, G4 sounds.
"R" LED flashes.

3. ROM version check (Internal / External)

- ① Press "TONE/SETTING" button to perform the "ROM check (Internal)."
The confirmation chords C4, E4, G4 sounds.
- ② Each time "▲/■" button is pressed, the different LEDs light.
Confirm with the lit LED.
- ③ Press "TONE/SETTING" button to perform the "ROM check (External)."
The confirmation chords C4, E4, G4 sounds.
- ④ Each time "▲/■" button is pressed, the different LEDs light.
Confirm with the lit LED.

LED Status >

0 : "▶/■" LED	1 : "MODERN" LED
2 : "CLASSIC" LED	3 : "RECORDER" LED
4 : "R" LED	5 : "L" LED
6 : "L + MODERN" LED	7 : "L + CLASSIC" LED
8 : "L + RECORDER" LED	9 : "L + R" LED

Internal ROM (07061813550): 0→7→0→6→1→8→1→3→5→5

External ROM (07061813550): 0→7→0→6→1→8→1→3→5→5

Internal ROM LED Sequence

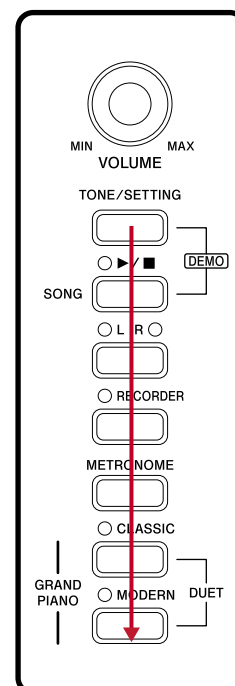
- 1:(0) "▶/■" LED
- 2:(7) "L + CLASSIC" LED
- 3:(0) "▶/■" LED
- 4:(6) "L + MODERN" LED
- 5:(1) "MODERN" LED
- 6:(8) "L + RECORDER" LED
- 7:(1) "MODERN" LED
- 8:(3) "RECORDER" LED
- 9:(5) "L" LED
- 10:(5) "L" LED

External ROM LED Sequence

- 1:(0) "▶/■" LED
- 2:(7) "L + CLASSIC" LED
- 3:(0) "▶/■" LED
- 4:(6) "L + MODERN" LED
- 5:(1) "MODERN" LED
- 6:(8) "L + RECORDER" LED
- 7:(1) "MODERN" LED
- 8:(3) "RECORDER" LED
- 9:(5) "L" LED
- 10:(5) "L" LED

4. BUTTON check

- ① Press "TONE/SETTING" button to perform the "BUTTON check."
The confirmation chords C4, E4, G4 sounds.
- ② Press the buttons in the order indicated in the illustration on the right.
Each time the button is pressed, the confirmation chord C6 sounds.
When "MODERN" button is pressed finally, the confirmation chords C4, E4, G4 sound.



5. MODEL check

- ① Press the "SOFT" pedal.
The confirmation chord E4 sounds and "MODERN" LED lights.
- ② Press the "SOSTENUTO" pedal.
The confirmation chord G4 sounds and "MODERN" LED lights.
- ③ Press the "DAMPER" pedal. (ON HALF)
The confirmation chord C4 sounds and "CLASSIC" LED lights.
- ④ Press the "DAMPER" peda. (ON FULL).
The confirmation chord C4 sounds and "CLASSIC" LED lights.

6. Headphone check

- ① Press "TONE/SETTING" button to perform the "Headphone check."
The confirmation chords C4, E4, G4 sounds and "L" LED lights.
- ② Connect the headphone to the jack.
"R" LED lights.
- ③ Press the "A4" key.
- ④ Remove the headphone from the jack.
"L" LED lights.
- ⑤ There are 2 headphone jacks. Repeat Steps ② → ③ → ④ for each jack.
- ⑥ Press "TONE/SETTING" button to finish the "headphone check."
The confirmation chords C4, E4, G4 sound and the light on "L" LED turns off.

7. MIDI check (If there is no MIDI cable, this check can be skipped.)

- ① Connect the MIDI cable.
- ② Press the "A4" key.
The confirmation chords C4, E4, G4 sounds.
- ③ Remove the MIDI cable.
- ④ Press "TONE/SETTING" button.
The confirmation chords C4, E4, G4 sounds.
- ⑤ Press "TONE/SETTING" button.
The confirmation chords C4, E4, G4 sound twice.

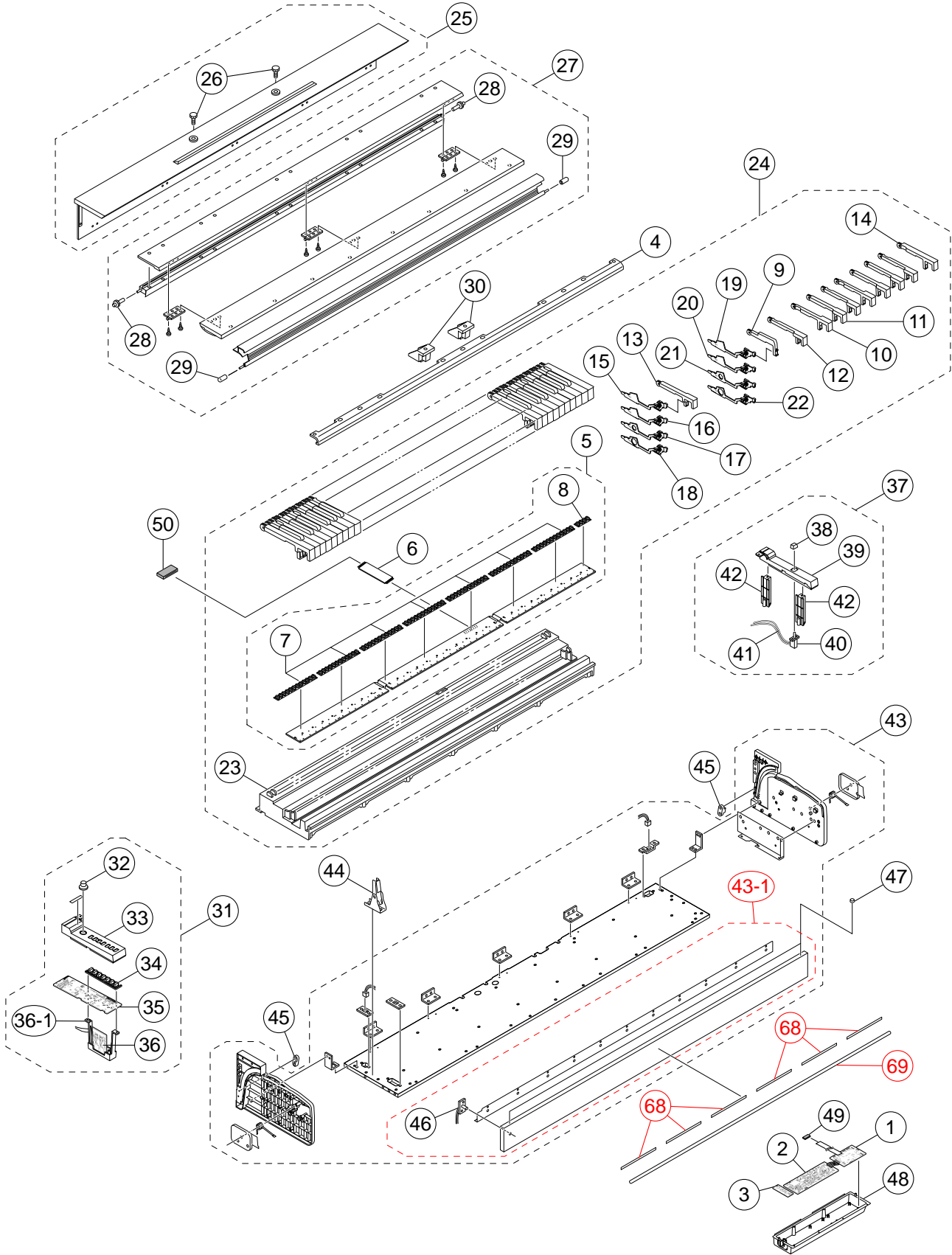
8. FLASH MEMORY check

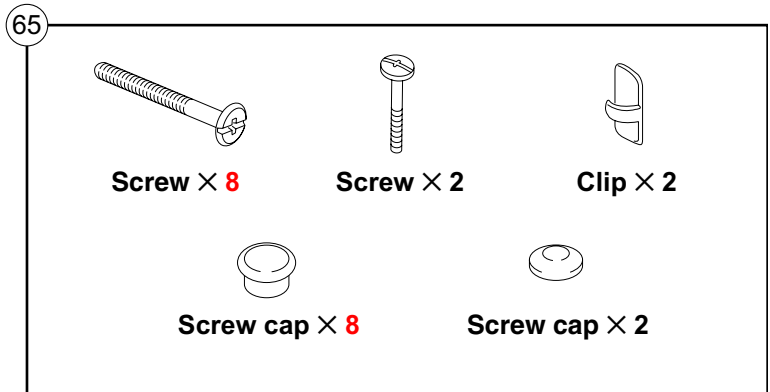
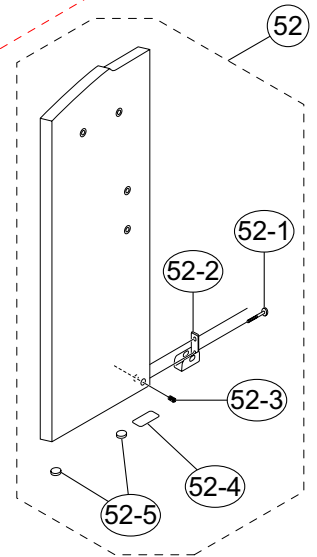
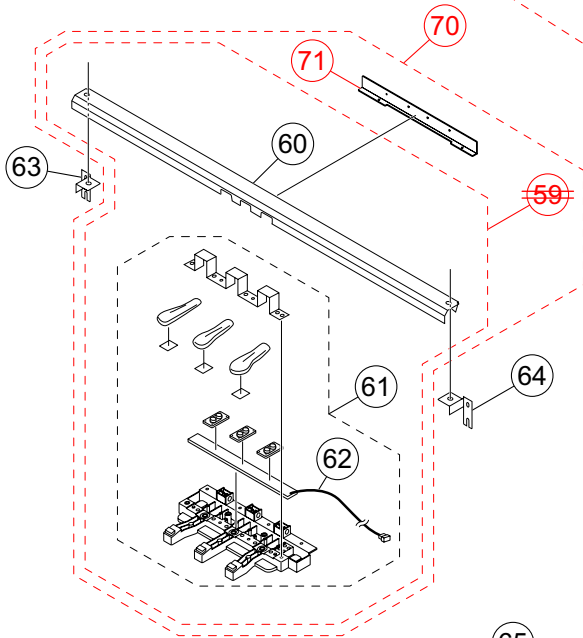
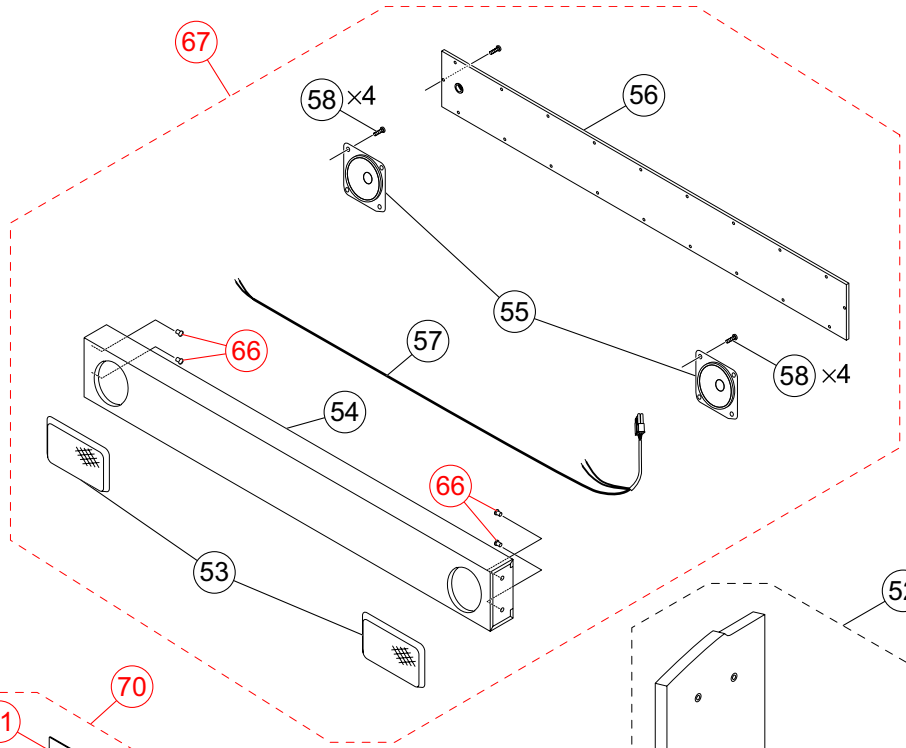
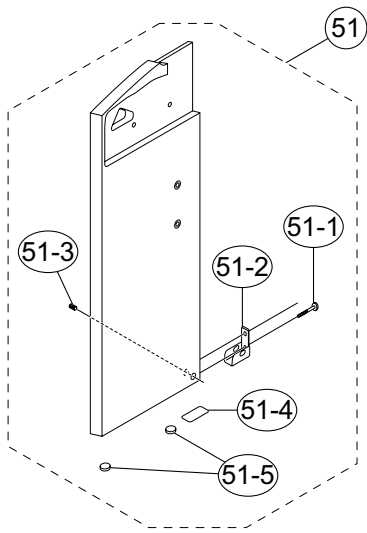
- ① Hold down "RECORDER" button to perform the "FLASH Memory Check".
"RECORDER" LED flashes
Then the light on "RECORDER" LED turns off and the confirmation chords C4, E4, G4 sound.

The diagnostic program ends.

Turn off the power to complete the checking.

EXPLODED VIEW





PARTS LIST

PX-720/PX-720C

Notes: This parts list does not include the cosmetic parts, which parts are marked with item No. "R-X" in the exploded view.

Contact our spare parts department if you need these parts for refurbish.

1. Prices and specifications are subject to change without prior notice.
2. As for spare parts order and supply, refer to the "GUIDEBOOK for Spare parts Supply", published seperately.
3. The numbers in item column correspond to the same numbers in drawing.

- | | |
|------------------------|-------------------------|
| 1 PX-720_BLACK_DI_120V | 6 PX-720_CHERRY_DI_120V |
| 2 PX-720_BLACK_DI_230V | 7 PX-720_CHERRY_DI_230V |
| 3 PX-720_BLACK_EU | 8 PX-720_CHERRY_EU |
| 4 PX-720_BLACK_UK | 9 PX-720_CHERRY_UK |
| 5 PX-720_BLACK_US | 10 PX-720_CHERRY_US |

N	Item	Parts No.	Parts Code	Specification	Q'TY										Price Code	R	Remarks		
					1	2	3	4	5	6	7	8	9	10					
MAIN PCB																			
N	1	10286863	PCB ASSY/MAIN	TK-RJM508127*001	1	1	1	1	1	1	1	1	1	1	1	1	DN	A	
	F6,F7	10122975	CHIP R-C NETWORK	EZASSB516BJ	2	2	2	2	2	2	2	2	2	2	2	2	AA	C	
	F3,4,5,9, 10,11	10122976	CHIP R-C NETWORK	EZASTB63ABJ	6	6	6	6	6	6	6	6	6	6	6	6	AA	C	
	IC8	10123002	IC	TC74VHC174FT(EL)	1	1	1	1	1	1	1	1	1	1	1	1	AD	C	
	IC5	10255468	LSI	MB91F036PFF-GE1	1	1	1	1	1	1	1	1	1	1	1	1	CB	C	
	IC9	10258396	IC	TC74VHC541FT(EL.K)	1	1	1	1	1	1	1	1	1	1	1	1	AE	C	
	IC10	10256338	IC	CS4351-CZZR	1	1	1	1	1	1	1	1	1	1	1	1	AS	C	
	Q1	22592764	TRANSISTOR	2SB1188T100Q	1	1	1	1	1	1	1	1	1	1	1	1	AB	X	
	Q2	10202670	TRANSISTOR	KTA2014-GR-RTK/P	1	1	1	1	1	1	1	1	1	1	1	1	AA	X	
	X1	10133372	CRYSTAL OSCILLATOR	SMD-49-12M	1	1	1	1	1	1	1	1	1	1	1	1	AI	C	
	L8,11,12,20, 21,22,23,24	10095204	CHIP BEAD CORE	BLM18AG102SN1D	8	8	8	8	8	8	8	8	8	8	8	8	AA	X	
	L13,16,17	10122963	COIL	BLM21AG102SN1D	3	3	3	3	3	3	3	3	3	3	3	3	AC	X	
	IC11	10253886	LSI	UPD65942GA-Y299EUA	1	1	1	1	1	1	1	1	1	1	1	1	AX	C	
	IC7	10262261	LSI	MB82D01181E60LPBNE	1	1	1	1	1	1	1	1	1	1	1	1	BC	C	
Sub PCB PS																			
N	2	10286883	PCB ASSY/PSA1	TK-RJM508129*001	1	1	1	1	1	1	1	1	1	1	1	1	CW	C	
	D201,D206	10209003	DIODE	1N5822-F100	2	2	2	2	2	2	2	2	2	2	2	2	AB	X	
	D213	10201501	I.C	PC900VONSZXF	1	1	1	1	1	1	1	1	1	1	1	1	AG	X	
	E202	10211947	RELAY	G5PA-28DC5V(PF)	1	1	1	1	1	1	1	1	1	1	1	1	AN	C	
	IC201	10203081	IC	LA4636-E	1	1	1	1	1	1	1	1	1	1	1	1	AV	X	
	IC202	10201503	I.C	PQ1CG21H2FZH	1	1	1	1	1	1	1	1	1	1	1	1	AO	X	
	L205	10208248	COIL	R187-860400NP	1	1	1	1	1	1	1	1	1	1	1	1	AC	X	
	L204	10206672	COIL	R2318-RB53856396NP	1	1	1	1	1	1	1	1	1	1	1	1	AA	X	
	L201,202,203	10206680	COIL	R2318-RB53856397NP	3	3	3	3	3	3	3	3	3	3	3	3	AA	X	
	D214	10209014	DIODE	1S4(26MM)	1	1	1	1	1	1	1	1	1	1	1	1	AA	X	
	D202,205,212	23153132	DIODE	1SS133T-77	3	3	3	3	3	3	3	3	3	3	3	3	AA	X	
	D203	10047557	ZENER DIODE	MTZJT-778.2B	1	1	1	1	1	1	1	1	1	1	1	1	AA	X	
	Q202	10025042	TRANSISTOR	2SD1468STPR	1	1	1	1	1	1	1	1	1	1	1	1	AA	C	
	Q205	10209017	TRANSISTOR	KTA1267-GR-AT/P	1	1	1	1	1	1	1	1	1	1	1	1	AA	C	
	Q201,204,206, 208,212	10206673	TRANSISTOR	KTC3199-GR-AT/P	5	5	5	5	5	5	5	5	5	5	5	5	AA	C	
CONSOLE																			
N	3	10286861	PCB ASSY/CNA3	TK-RJM508135*001	1	1	1	1	1	1	1	1	1	1	1	1	BW	C	
	J603	10208247	CONNECTOR	DJ-0702B*019	1	1	1	1	1	1	1	1	1	1	1	1	AB	C	DC JACK
	L605	10206672	COIL	R2318-RB53856396NP	1	1	1	1	1	1	1	1	1	1	1	1	AA	X	
	L603,L604	10206680	COIL	R2318-RB53856397NP	2	2	2	2	2	2	2	2	2	2	2	2	AA	X	
N	4	10284867	CONSOLE PANEL	RJM506941-002V04	1	1	1	1	1	1	1	1	1	1	1	1	CE	C	
N	4	10284868	CONSOLE PANEL	RJM506941-003V04	1	1	1	1	1	1	1	1	1	1	1	1	CE	C	
KEY BOARD UNIT																			
	5	10208264	PCB ASSY/KEY	TK-RJM506061*001	1	1	1	1	1	1	1	1	1	1	1	1	CI	C	
	D801-854, 923-976	10079928	DIODE	1SS133TA	108	108	108	108	108	108	108	108	108	108	108	108	AA	X	
	D855-922	10079928	DIODE	1SS133TA	68	68	68	68	68	68	68	68	68	68	68	68	AA	X	
	CN803	10211732	CONNECTOR	30FMZ-ST(LF)(SN)	1	1	1	1	1	1	1	1	1	1	1	1	AG	X	
	6	37195442	CABLE	N30315B1B05-UL2896	1	1	1	1	1	1	1	1	1	1	1	1	AO	C	
	7	10133656	RUBBER/CONTACT/AG	RJM502920-001V01	7	7	7	7	7	7	7	7	7	7	7	7	AK	B	
	8	10133635	RUBBER/CONTACT/GC	RJM502921-001V01	1	1	1	1	1	1	1	1	1	1	1	1	AG	B	
	9	10135317	BLACK KEY	RJM502797-001V01	36	36	36	36	36	36	36	36	36	36	36	36	AC	C	
	10	10135426	WHITE KEY/CEGB	RJM502862-001V01	7	7	7	7	7	7	7	7	7	7	7	7	AT	C	
	11	10135427	WHITE KEY/DFA	RJM502863-001V01	7	7	7	7	7	7	7	7	7	7	7	7	AQ	C	
	12	10135428	WHITE KEY/B	RJM502794-001V01	1	1	1	1	1	1	1	1	1	1	1	1	AG	C	
	13	10135429	WHITE KEY/SA	RJM502795-001V01	1	1	1	1	1	1	1	1	1	1	1	1	AJ	C	
	14	10135430	WHITE KEY/SC	RJM502796-001V01	1	1	1	1	1	1	1	1	1	1	1	1	AJ	C	
	15	10208265	HAMMER ASSY/W1	TK-RJM506035*001	13	13	13	13	13	13	13	13	13	13	13	13	AF	C	
	16	10208266	HAMMER ASSY/W2	TK-RJM506036*001	13	13	13	13	13	13	13	13	13	13	13	13	AF	C	
	17	10208267	HAMMER ASSY/W3	TK-RJM506037*001	13	13	13	13	13	13	13	13	13	13	13	13	AF	C	
	18	10208269	HAMMER ASSY/W4	TK-RJM506038*001	13	13	13	13	13	13	13	13	13	13	13	13	AF	C	
	19	10208275	HAMMER ASSY/B1	TK-RJM506039*001	9	9	9	9	9	9	9	9	9	9	9	9	AE	C	
	20	10208281	HAMMER ASSY/B2	TK-RJM506040*001	9	9	9	9	9	9	9	9	9	9	9	9	AE	C	
	21	10208286	HAMMER ASSY/B3	TK-RJM506041*001	9	9	9	9	9	9	9	9	9	9	9	9	AE	C	
	22	10208290	HAMMER ASSY/B4	TK-RJM506042*001	9	9	9	9	9	9	9	9	9	9	9	9	AE	C	
	23	10204304	CHASSIS/KEY	RJM505515-001V01	1	1	1	1	1	1	1	1	1	1	1	1	BX	C	
	24	10213920	KEY UNIT	TK-RJM506362*001	1	1	1	1	1	1	1	1	1	1	1	1	EC	B	

- 1 PX-720_BLACK_DI_120V 6 PX-720_CHERRY_DI_120V
- 2 PX-720_BLACK_DI_230V 7 PX-720_CHERRY_DI_230V
- 3 PX-720_BLACK_EU 8 PX-720_CHERRY_EU
- 4 PX-720_BLACK_UK 9 PX-720_CHERRY_UK
- 5 PX-720_BLACK_US 10 PX-720_CHERRY_US

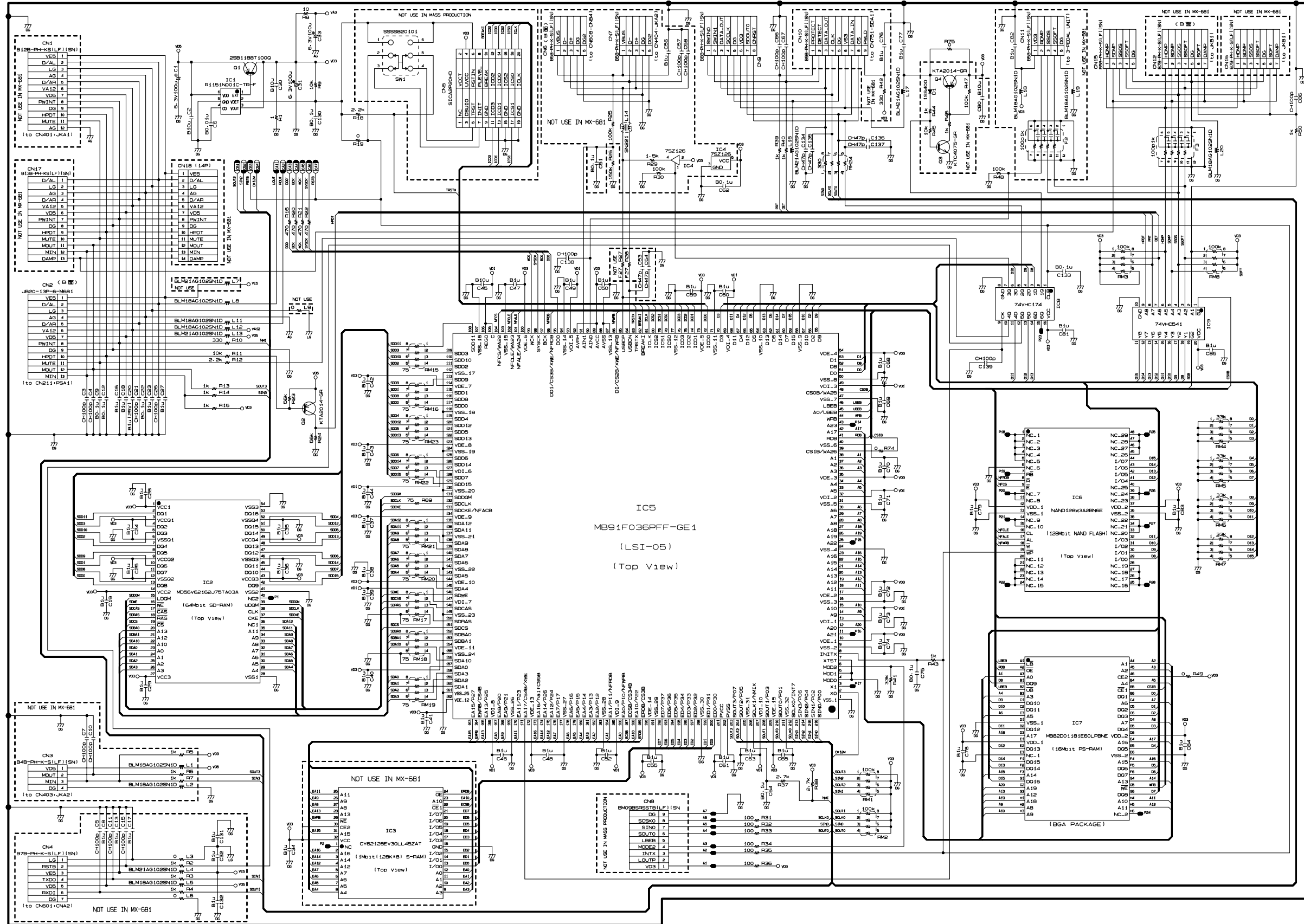
N	Item	Parts No.	Parts Code	Specification	Q'TY										Price Code	R	Remarks	
					1	2	3	4	5	6	7	8	9	10				
MAIN CASE UNIT																		
N	25	10286879	BOARD UNIT/TOP	TK-RJM508094*001	1	1	1	1	1							DJ	C	
N	25	10286880	BOARD UNIT/TOP	TK-RJM508094*002						1	1	1	1	1		DI	C	
N	26	10218670	SCREW/MUSIC/STAND	RJM506168-001V02	2	2	2	2	2	2	2	2	2	2		AC	C	
N	27	10286872	COVER ASSY/KEY	TK-RJM508092*001	1	1	1	1	1							DQ	C	
N	27	10286873	COVER ASSY/KEY	TK-RJM508092*002						1	1	1	1	1		DQ	C	
N	28	10211850	GEAR	RJM505897-001V01	2	2	2	2	2	2	2	2	2	2		AA	C	
N	29	10211851	SLIDE CAP	RJM505899-001V01	2	2	2	2	2	2	2	2	2	2		AA	C	
N	30	10281460	BRACKET	RJM507981-001V01	2	2	2	2	2	2	2	2	2	2		AA	X	
N	31	10286854	SIDE UNIT/LEFT	TK-RJM508098*001	1	1	1	1	1							CX	C	
N	31	10286857	SIDE UNIT/LEFT	TK-RJM508098*002						1	1	1	1	1		CX	C	
N	32	10052232	KNOB/RTR	M341402-1	1	1	1	1	1							AE	C	
N	32	10281937	KNOB/RTR	M341402-002V01						1	1	1	1	1		AA	C	
N	33	10281490	SIDE BLOCK/LEFT	RJM507971-001V01	1	1	1	1	1							AE	X	
N	33	10281955	SIDE BLOCK/LEFT	RJM507971-002V01						1	1	1	1	1		AE	X	
N	34	10281445	RUBBER KEY	RJM505783-002V02	1	1	1	1	1	1	1	1	1	1		AD	C	
N	35	10286859	PCB ASSY/CNA1	TK-RJM508131*001	1	1	1	1	1	1	1	1	1	1		CJ	C	
N	IC601,602	10279863	IC	TC74VHC164FT(EL.K)	2	2	2	2	2	2	2	2	2	2		AN	C	
N	VR601	10273791	VARIABLE RESISTOR	F-09KGH-CASIO-1	1	1	1	1	1	1	1	1	1	1		AJ	C	
N	D607,608,609,610	23153132	DIODE	1SS133T-77	4	4	4	4	4	4	4	4	4	4		AA	X	
N	D401-406	10171338	LED	LT2P71-81-M1-S06	6	6	6	6	6	6	6	6	6	6		AA	C	
N	SW601-607	10228658	TACT SWITCH	THV502GAA	7	7	7	7	7	7	7	7	7	7		AA	X	
N	36	10286860	PCB ASSY/CNA2	TK-RJM508133*001	1	1	1	1	1	1	1	1	1	1		CD	C	
N	36-1	10281486	BRACKET	RJM507979-001V01	1	1	1	1	1	1	1	1	1	1		AC	X	
N	J601,602	10171449	CONNECTOR	JY-6360*04-070	2	2	2	2	2	2	2	2	2	2		AE	C	Phone Jack
N	L601,602	10206672	COIL	R2318-RB53856396NP	2	2	2	2	2	2	2	2	2	2		AA	X	
N	37	10286855	SIDE UNIT/RIGHT	TK-RJM508099*001	1	1	1	1	1							CN	C	
N	37	10286858	SIDE UNIT/RIGHT	TK-RJM508099*002						1	1	1	1	1		CN	C	
N	38	69245260	BUTTON/POWER	M340318-1	1	1	1	1	1							AA	C	
N	38	10203292	BUTTON/POWER	M340318-002V01						1	1	1	1	1		AA	C	
N	39	10281491	SIDE BLOCK/RIGHT	RJM507972-001V01	1	1	1	1	1							AE	X	
N	39	10281956	SIDE BLOCK/RIGHT	RJM507972-002V01						1	1	1	1	1		AE	X	
N	40	10229392	POWER SWITCH	SDDL1PCHL011	1	1	1	1	1	1	1	1	1	1		AS	C	
N	41	10284864	HARNESS	EH-2P-115-M681A	1	1	1	1	1	1	1	1	1	1		AI	C	
N	42	10281487	BRACKET	RJM507980-001V01	2	2	2	2	2	2	2	2	2	2		AA	X	
N	43	10286882	CASE ASSY/MIDDLE	TK-RJM508097*001	1	1	1	1	1							DU	C	
N	43	10286856	CASE ASSY/MIDDLE	TK-RJM508097*002						1	1	1	1	1		DU	C	
N	43-1	10288159	BOARD ASSY/FRONT	TK-RJM508102*001	1	1	1	1	1								C	
N	43-1	10288160	BOARD ASSY/FRONT	TK-RJM508102*002						1	1	1	1	1			C	
N	44	10259521	DAMPER ASSY	TK-RJM507005*001	1	1	1	1	1	1	1	1	1	1		BB	C	
N	45	10256108	STOPPER	RJM506780-001V01						2	2	2	2	2		AC	C	
N	45	10281501	STOPPER	RJM506780-002V01	2	2	2	2	2							AE	C	
N	46	10286862	PCB ASSY/CNA4	TK-RJM508137*001	1	1	1	1	1	1	1	1	1	1		BS	C	
N	D611	10203050	LED	231XHD	1	1	1	1	1	1	1	1	1	1		AA	C	
N	47	10269833	CUSHION	RJM507817-001V01	2	2	2	2	2	2	2	2	2	2		AA	C	
N	48	10281584	BOX/PCB	RJM507974-001V01	1	1	1	1	1	1	1	1	1	1		BK	X	
N	49	10268012	FERRITE CORE	K5ARH16X9X17	1	1	1	1	1	1	1	1	1	1		AX	C	BOX
N	50	10212699	FERRITE CORE	K5ARP40X6.5X12	1	1	1	1	1	1	1	1	1	1		AS	C	FCC
N	68	10246756	TAPE	RJM507041-001V01	6	6	6	6	6	6	6	6	6	6		AA	C	
N	69	10256109	BOARD/DECOR	RJM506627-001V01	1	1	1	1	1	1	1	1	1	1		AH	C	

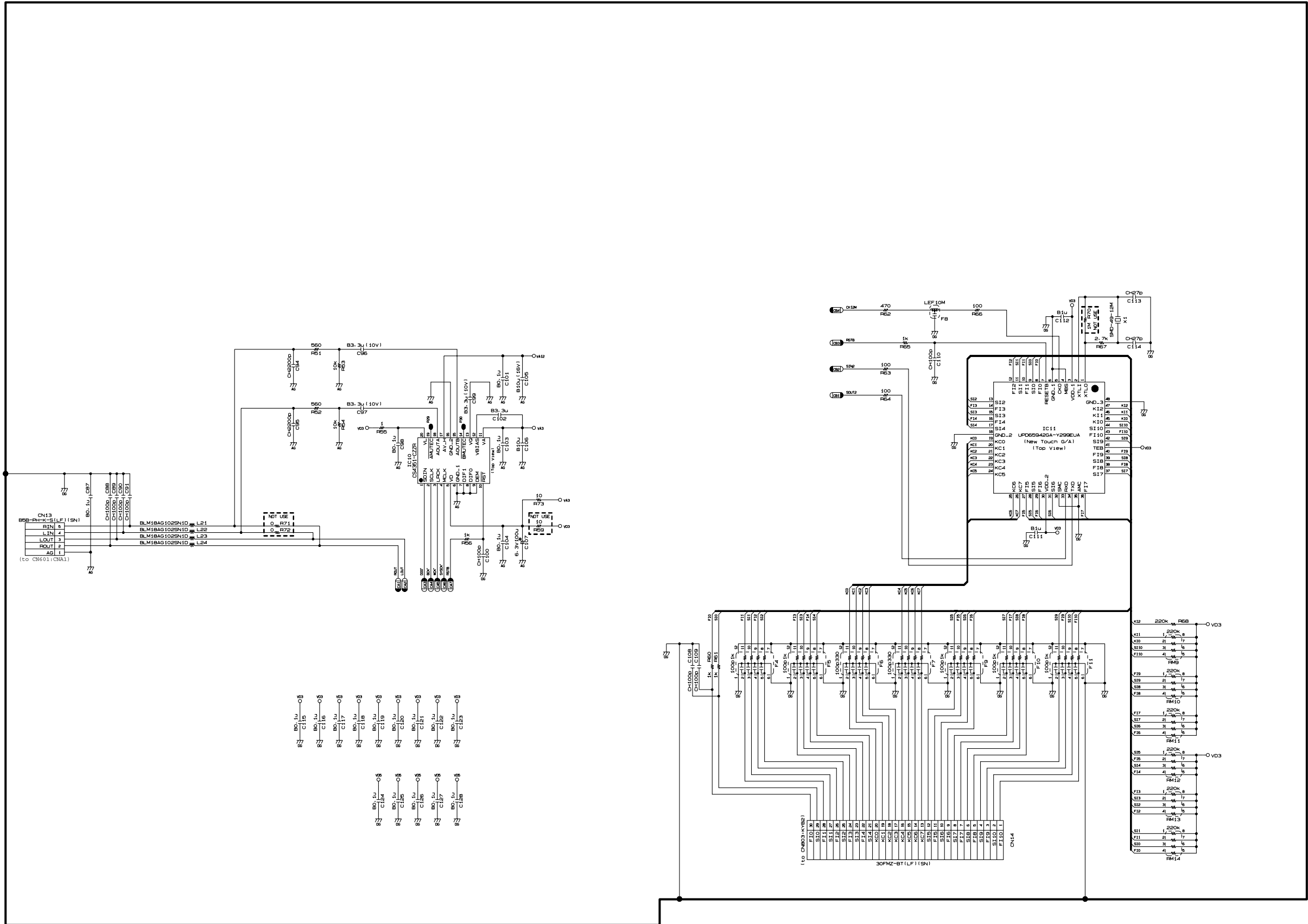
- 1 PX-720_BLACK_DI_120V 6 PX-720_CHERRY_DI_120V
- 2 PX-720_BLACK_DI_230V 7 PX-720_CHERRY_DI_230V
- 3 PX-720_BLACK_EU 8 PX-720_CHERRY_EU
- 4 PX-720_BLACK_UK 9 PX-720_CHERRY_UK
- 5 PX-720_BLACK_US 10 PX-720_CHERRY_US

N	Item	Parts No.	Parts Code	Specification	Q'TY										Price Code	R	Remarks	
					1	2	3	4	5	6	7	8	9	10				
STAND																		
N	51	10286839	BOARD ASSY/LEFT	TK-RJM508087*001	1		1	1	1								DI	C
N	51	10286840	BOARD ASSY/LEFT	TK-RJM508087*002		1											DJ	C
N	51	10286841	BOARD ASSY/LEFT	TK-RJM508087*003								1		1	1	1	DH	C
N	51	10286842	BOARD ASSY/LEFT	TK-RJM508087*004										1	1	1	DH	C
	51-1	10246609	BOLT	YD-0386353	1	1	1	1	1	1	1	1	1	1	1	1	AB	X
N	51-2	10238078	BRACKET/ST	RJM505788-003V01	1	1	1	1	1								AZ	X
N	51-2	10281943	BRACKET/ST	RJM505788-004V01							1	1	1	1	1	1	AZ	X
	51-3	10246604	CROSS NUT	YD-0370163	1	1	1	1	1	1	1	1	1	1	1	1	AB	X
	51-4	10133620	FOOT	RJM503236-001V01	1	1	1	1	1	1	1	1	1	1	1	1	AA	X
	51-5	10134829	RUBBER FOOT	RJM503203-001V01	2	2	2	2	2	2	2	2	2	2	2	2	AA	X
N	52	10286843	BOARD ASSY/RIGHT	TK-RJM508088*001	1		1	1	1		0						DI	C
N	52	10286874	BOARD ASSY/RIGHT	TK-RJM508088*002		1					0						DJ	C
N	52	10286875	BOARD ASSY/RIGHT	TK-RJM508088*003							1		1	1	1	1	DJ	C
N	52	10286876	BOARD ASSY/RIGHT	TK-RJM508088*004								1		1	1	1	DJ	C
	52-1	10246609	BOLT	YD-0386353	1	1	1	1	1	1	1	1	1	1	1	1	AB	X
N	52-2	10238078	BRACKET/ST	RJM505788-003V01	1	1	1	1	1								AZ	X
N	52-2	10281943	BRACKET/ST	RJM505788-004V01							1	1	1	1	1	1	AZ	X
	52-3	10246604	CROSS NUT	YD-0370163	1	1	1	1	1	1	1	1	1	1	1	1	AB	X
	52-4	10133620	FOOT	RJM503236-001V01	1	1	1	1	1	1	1	1	1	1	1	1	AA	X
	52-5	10134829	RUBBER FOOT	RJM503203-001V01	2	2	2	2	2	2	2	2	2	2	2	2	AA	X
N	53	10282627	BLOCK ASSY/SPEAKER	TK-RJM506470*001	1	1	1	1	1								AO	C
N	53	10259555	BLOCK ASSY/SPEAKER	TK-RJM506470*002							1	1	1	1	1	1	AS	C
N	54	10287005	SPEAKER BOX	RJM508314-001V01	1	1	1	1	1								DE	C
N	54	10287008	SPEAKER BOX	RJM508314-002V01							1	1	1	1	1	1	DH	C
N	55	10269829	SPEAKER	C12J02	2	2	2	2	2	2	2	2	2	2	2	2	AX	B
N	56	10228619	BACK BOARD/SPEAKER	RJM505681-001V02	1	1	1	1	1								CH	X
N	56	10281941	BACK BOARD/SPEAKER	RJM505681-002V01							1	1	1	1	1	1	CN	X
	57	10127139	CONNECTOR	ELP-4P-134-M417	1	1	1	1	1	1	1	1	1	1	1	1	AL	C
	58	10203698	NUT	S-WLA0-4X16Z3NQ	8	8	8	8	8	8	8	8	8	8	8	8	AA	X
N	59	10286837	BOARD ASSY/PEDAL	TK-RJM508112*001	4	4											DM	C
N	59	10286838	BOARD ASSY/PEDAL	TK-RJM508112*002							4	4					DM	C
N	59	10286869	BOARD ASSY/PEDAL	TK-RJM508112*003				4									DM	C
N	60	10281576	BOARD/PEDAL	RJM508055-001V01	1	1	1	1	1								DA	C
N	60	10281959	BOARD/PEDAL	RJM508055-002V01							1	1	1	1	1	1	DA	C
N	61	10286871	PEDAL UNIT	TK-RJM508113*001	1	1	1	1	1	1	1	1	1	1	1	1	DM	C
	62	10212698	HARNESS	SMR-5P-155-MP5	1	1	1	1	1	1	1	1	1	1	1	1	AM	C
N	63	10281469	BRACKET/PEDAL/L	RJM508143-001V01	1	1	1	1	1	1	1	1	1	1	1	1	AT	C
N	64	10281470	BRACKET/PEDAL/R	RJM508144-001V01	1	1	1	1	1	1	1	1	1	1	1	1	AT	C
N	65	10286845	SCREW SET	TK-RJM508090*001	1	1		1	1								CB	C
N	65	10286847	SCREW SET	TK-RJM508090*003				1									CB	C
N	65	10286846	SCREW SET	TK-RJM508090*002							1	1		1	1	1	CC	C
N	65	10286848	SCREW SET	TK-RJM508090*004									1				CB	C
N	66	10246601	NUT	YD-0026129	1	1	1	1	1	1	1	1	1	1	1	1	AD	C
N	67	10289949	BOX ASSY/SPEAKER	TK-RJM506117*007	1				1								DT	C
N	67	10289950	BOX ASSY/SPEAKER	TK-RJM506117*008		1											DS	C
N	67	10289951	BOX ASSY/SPEAKER	TK-RJM506117*009			1	1									DQ	C
N	67	10286851	BOX ASSY/SPEAKER	TK-RJM506117*004							1				1		DU	C
N	67	10286852	BOX ASSY/SPEAKER	TK-RJM506117*005								1					DR	C
N	67	10286853	BOX ASSY/SPEAKER	TK-RJM506117*006									1	1			DU	C
N	70	10286870	BOARD ASSY/ PEDAL with BRACKET	TK-RJM508112*004							1	1	1	1	1	1	DQ	C
N	70	10318223	BOARD ASSY/ PEDAL with BRACKET	TK-RJM508112*006	1	1	1	1	1								DQ	C
N	71	10312216	BRACKET-PDL-2	RJM509068-001V01	1	1	1	1	1	1	1	1	1	1	1	1	BV	C
ACCESSORY																		
	-	10229891	AC ADAPTOR	AD-12UL-TC3(D)	1				1	1							BV	C
	-	10229890	AC ADAPTOR	AD-12FL-TC4(D)		1	1	1	1				1	1	1	1	CD	C
N	-	10286877	STAND/MUSIC	TK-RJM508089*001	1	1			1	1	1				1	1	BX	C
N	-	10286878	STAND/MUSIC	TK-RJM508089*002				1							1		CW	C
N	-	10286844	STAND/MUSIC	TK-RJM508089*003				1							1		CW	C
	-	10255460	MUSIC BOOK	05PHCOSCOWL1A	1	1	1	1	1	1	1	1	1	1	1	1	AX	X
	-	10100792	CORD SET	INQ.1258(1)				1							1		AP	C
	-	10045706	CORD SET	EC2NC-M001A				1							1		AM	C
	-	10045707	CORD SET	BC2NC-M001A					1						1		BD	C

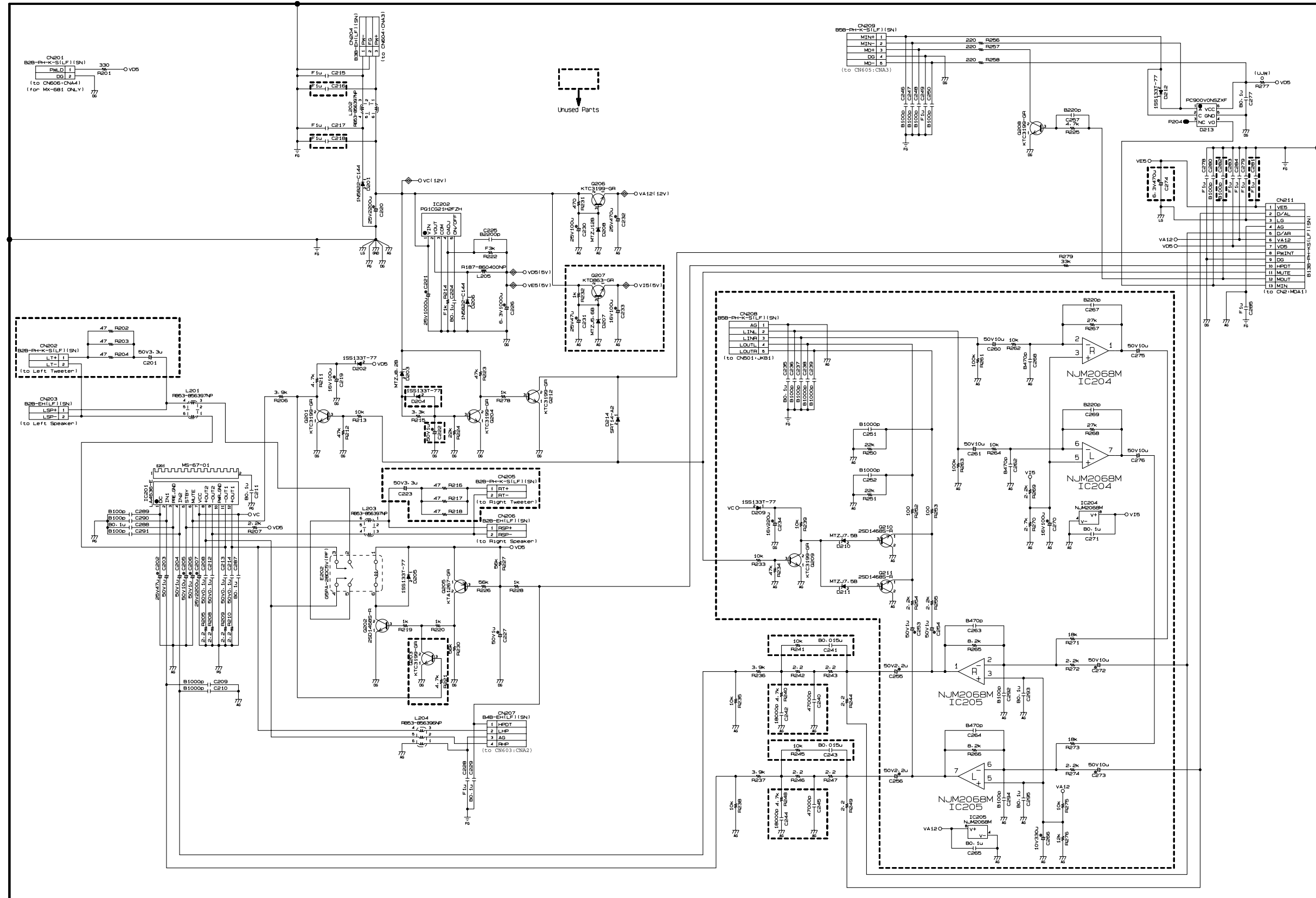
SCHEMATIC DIAGRAMS

Main PCB M408-MDA1

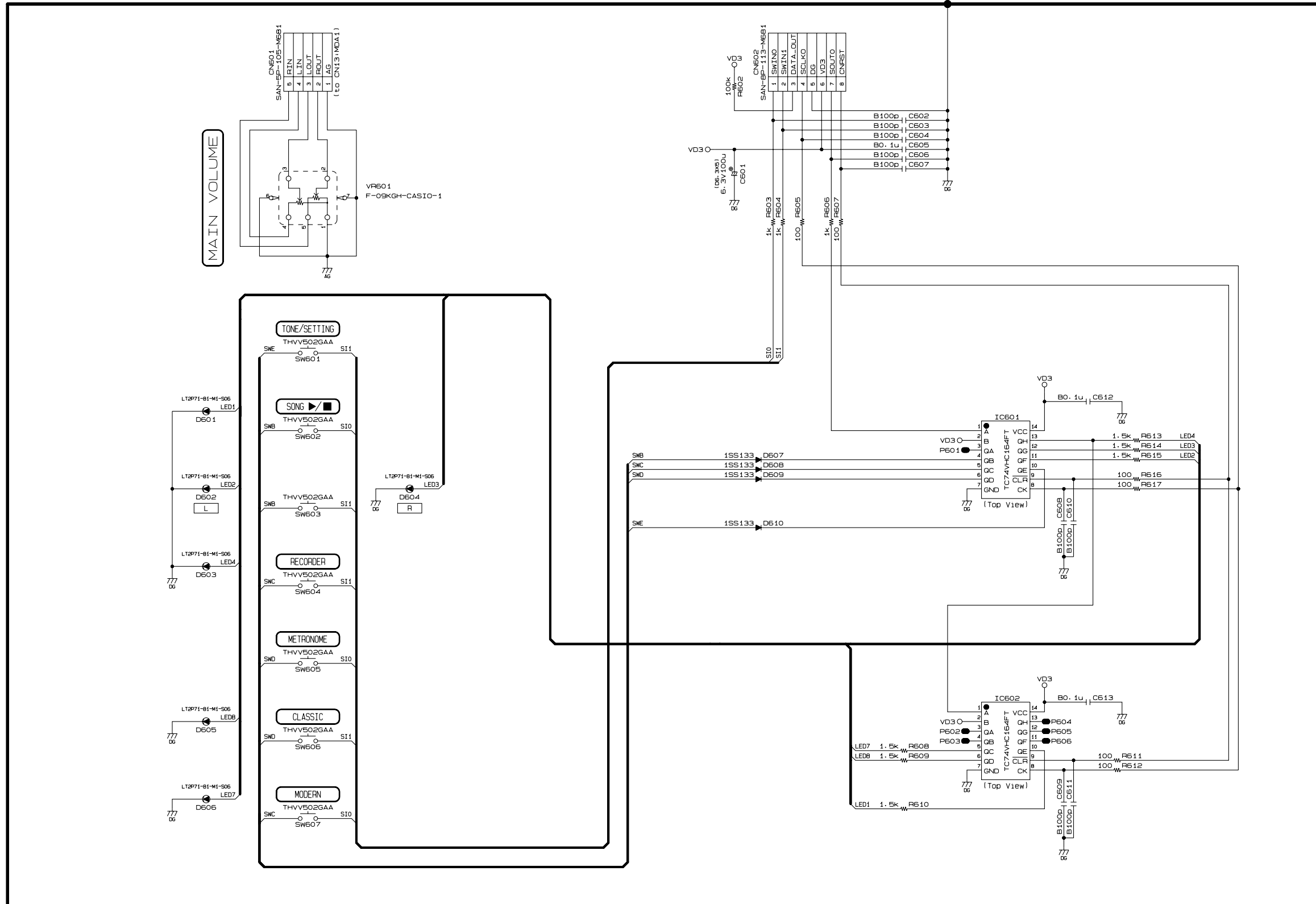




Sub PCB M681-PSA1

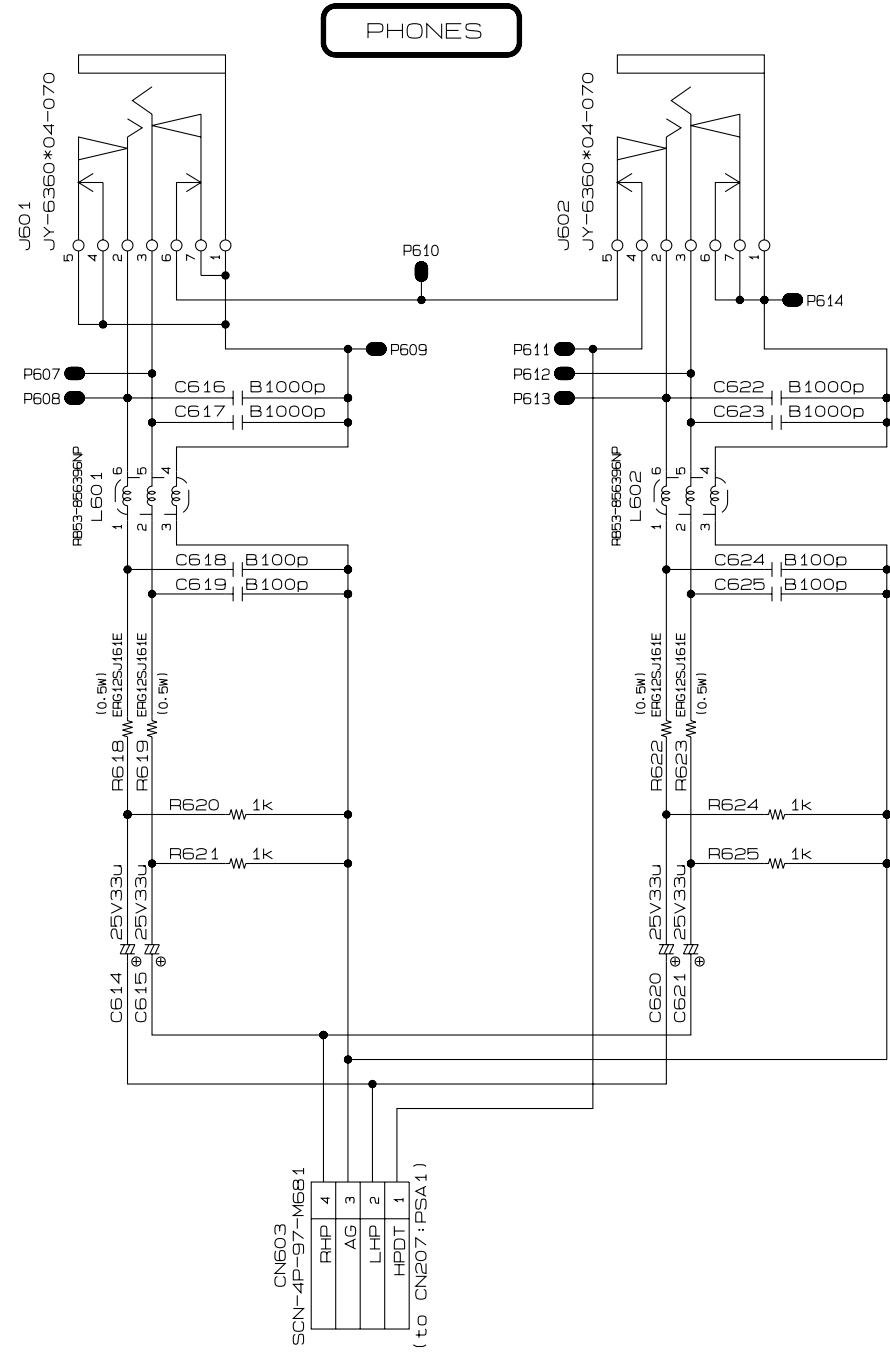


Console PCB M681-CNA1

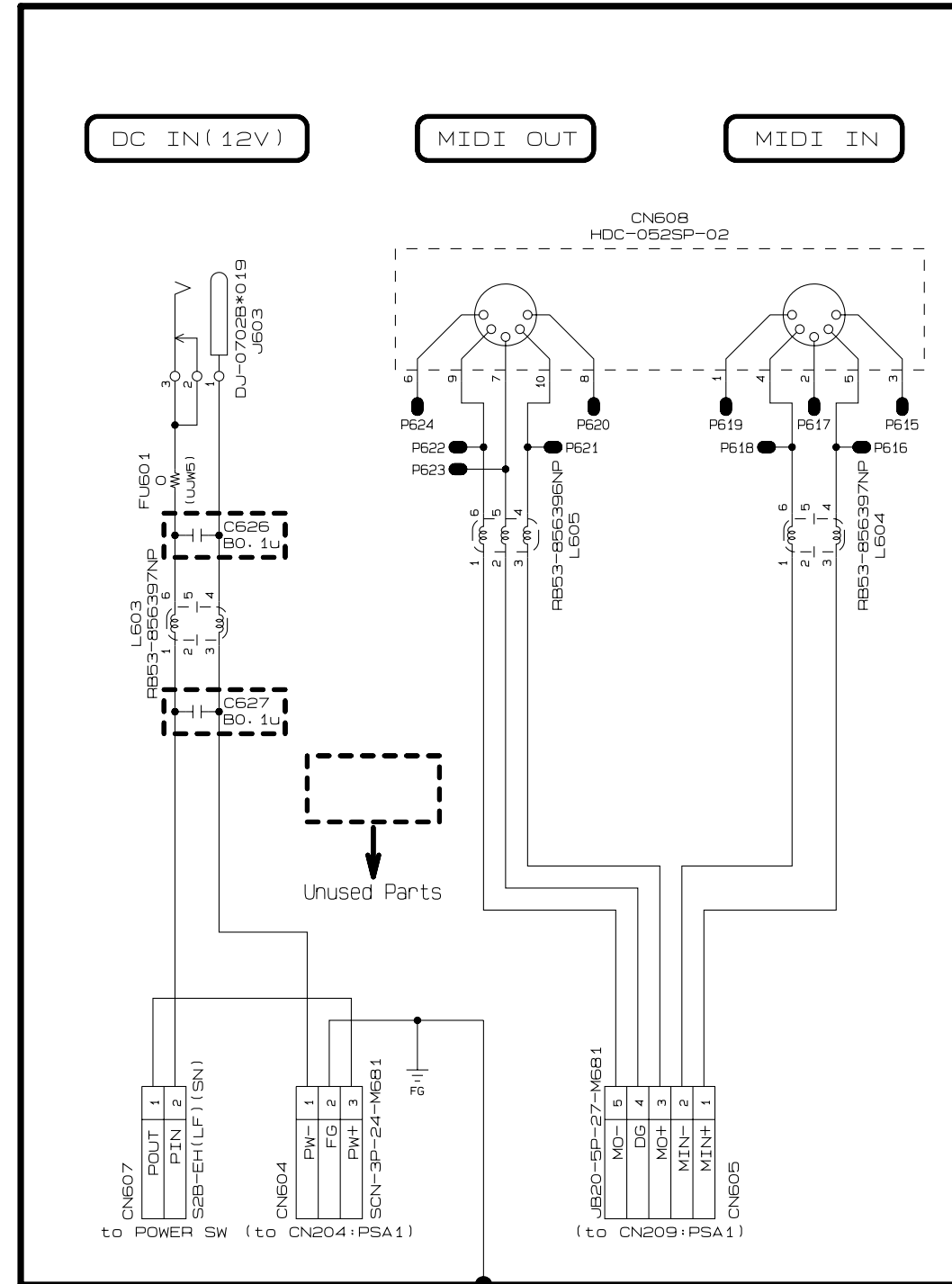


Console PCBs M681-CNA2, CNA3, CNA4

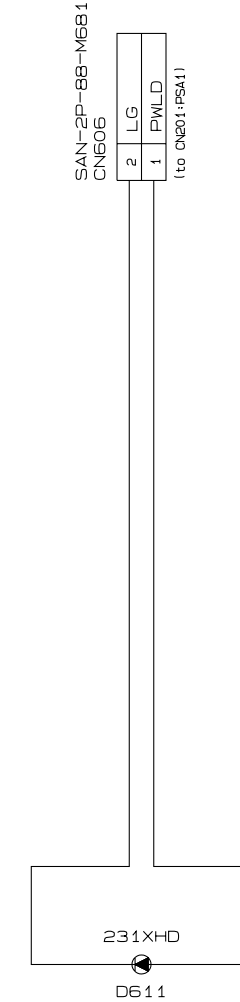
Console PCB M681-CNA2



Console PCB M681-CNA3



Console PCB M681-CNA4



Ver. 1 : Oct. 2007

- The name of an item was changed (P2)
(BLOCK DIAGRAM → BLOCK AND WIRING DIAGRAMS)
- The specifics of PCB LAYOUT was added. (P3)

Ver. 2 : Dec. 2007

- Correction of the EXPLODED VIEW (P21 to P22)
- Correction of the PARTS LIST (P25 to P26)

Ver. 3 : Jan. 2008

- Correction of the PARTS LIST (P26)

Ver. 4 : Feb. 2009

- Correction of the EXPLODED VIEW (P22)
- Correction of the PARTS LIST (P26)

Ver. 5 : Jan. 2010

- Correction of the EXPLODED VIEW (P21)
- Correction of the PARTS LIST (P25)

Ver. 6 : Oct. 2015

- Correction of the PARTS LIST (P25)

CASIO COMPUTER CO.,LTD.

Overseas Service Division

6-2, Hon-machi 1-Chome
Shibuya-ku, Tokyo 151-8543, Japan