

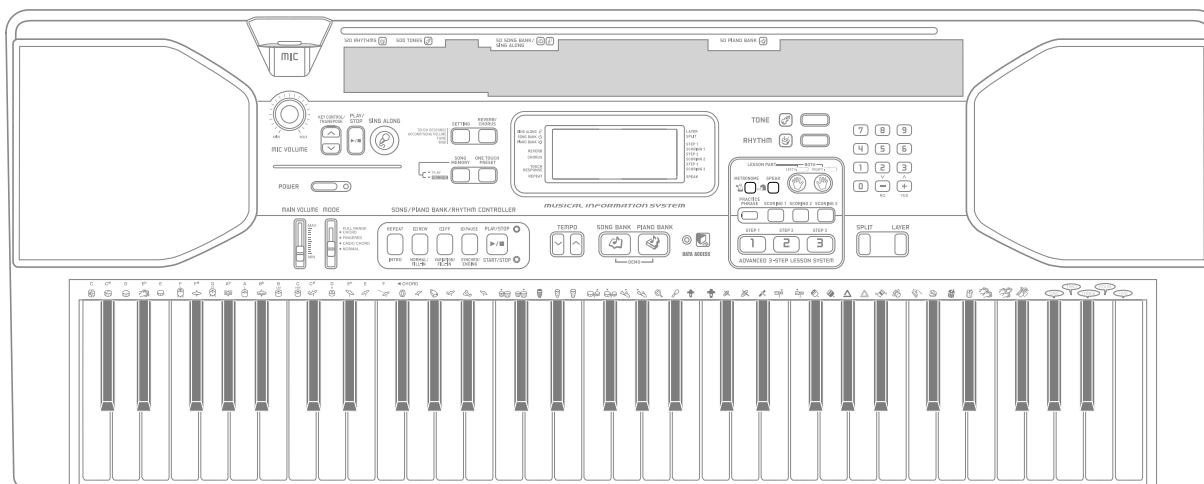
CASIO®

SERVICE MANUAL

& PARTS LIST (without price)

CTK-800

JUN. 2005



CTK-800

ELECTRONIC KEYBOARD

Ver.1 : Dec. 2009

CONTENTS

Specifications	1
Block Diagram	3
Circuit Description	4
Printed Circuit Board	5
Disassembly	7
Diagnostic Program	12
Exploded View	15
Parts List	16
Schematic Diagrams	19

SPECIFICATIONS

GENERAL

Keyboard:	61 standard-size keys, 5 octaves (with touch response on/off)
Tones:	500 (362 panel tones + 128 General MIDI tones + 10 drum sets); with layer and split
Polyphony:	32 notes maximum (16 for certain tones)

Auto Accompaniment

Rhythm Patterns:	120
Tempo:	Variable (226 steps, ♩ = 30 to 255)
Chords:	3 fingering methods (CASIO CHORD, FINGERED, FULL RANGE CHORD)
Rhythm Controller:	START/STOP, INTRO, NORMAL/NORMAL FILL-IN, VARIATION/ VARIATION FILL-IN, SYNCHRO/ENDING
Accomp Volume:	0 to 127 (128 steps)
One Touch Presets:	Recalls settings for tone, tempo, layer, and split.

<Advanced 3-Step Lesson System>

3-step Lesson:	3 lessons (Step 1, 2, 3)
Playback:	Repeat play of a single tune
Evaluation Mode:	Scoring 1, Scoring 2, Scoring 3, Phrase Practice
Voice Fingering Guide:	On/Off

Song Bank, Piano Bank

Number of Tunes:	Song Bank/Sing Along: 50, Piano Bank: 50, download songs: Up to 10
Controllers:	PLAY/STOP, PAUSE, FF, REW, LEFT/RIGHT

Musical Information Function:

Tone, Auto Accompaniment, Song Bank, Piano Bank, Sing Along numbers and names; staff notation, tempo, metronome, measure and beat number, step lesson display, chord name, fingering, pedal operation, Keyboard, Song Bank icon, Piano Bank icon, Sing Along icon, Voice Fingering Guide, Evaluation Mode, song memory indicator

Sing Along Mode

Number of Tunes:	Song Bank/Sing Along: 50, download songs: Up to 10 (Approximately 70 kilobytes)
Controllers:	PLAY/STOP, KEY CONTROL (25 steps, -12 semitones to +12 semitones)

Metronome:

Beat Specification:	On/Off
	0, 2 to 6

Song Memory

Number of Songs:	Two (1 Lesson Recording, 1 Performance Recording)
Recorded Data:	Lesson Recording: Right-hand part, left-hand part, both-hand parts Performance Recording: Track 1 (chord accompaniment), Track 2 (melody)
Recording Method:	Real-time
Memory Capacity:	Approximately 12,000 notes (total for two songs)

Other Functions

Transpose:	25 steps (-12 semitones to +12 semitones)
Tuning:	101 steps (A4 = approximately 440Hz ±50Cents)

Terminals

USB port	
Sustain/Assignable Jack:	Standard jack (sustain, sostenuto, soft, rhythm start/stop)
Headphone/Output Terminal:	Stereo standard jack
Output Impedance:	100Ω
Output Voltage:	4V (RMS) MAX
Microphone In:	Standard jack (with microphone volume knob) Input impedance: 3KΩ Input sensitivity: 10mV

Power Jack:	9V DC
Power Supply:	2-way
Batteries:	6 D-size batteries
Battery Life:	Approximately 9 hours continuous operation on manganese batteries
AC Adaptor:	AD-5
Auto Power Off:	Turns power off approximately 6 minutes after last key operation. Enabled under batter power only, can be disabled manually.
Speaker Output:	2.5W + 2.5W
Power Consumption:	9V == 7.7W
Dimensions:	96.0 x 37.5 x 14.0 cm (37 ¹³ / ₁₆ x 14 ³ / ₄ x 5 ¹ / ₂ inch)
Weight:	Approximately 5.4 kg (11.9 lbs)(without batteries)

- Design and specifications are subject to change without notice.

ELECTRICAL

Current drain with 9 V DC:

Consumption Current	650 mA ± 20 %
Consumption Current at idle	185 mA ± 20 %
with 12 keys from C1 to G2 pressed in 233 SINE LEAD	
Volume: maximum, Velocity: maximum	

Speaker output level (Vrms with 4 Ω load each channel):

with key D1 in 233 SINE LEAD	
Volume: maximum, Velocity: maximum	2020 mV ± 20 %

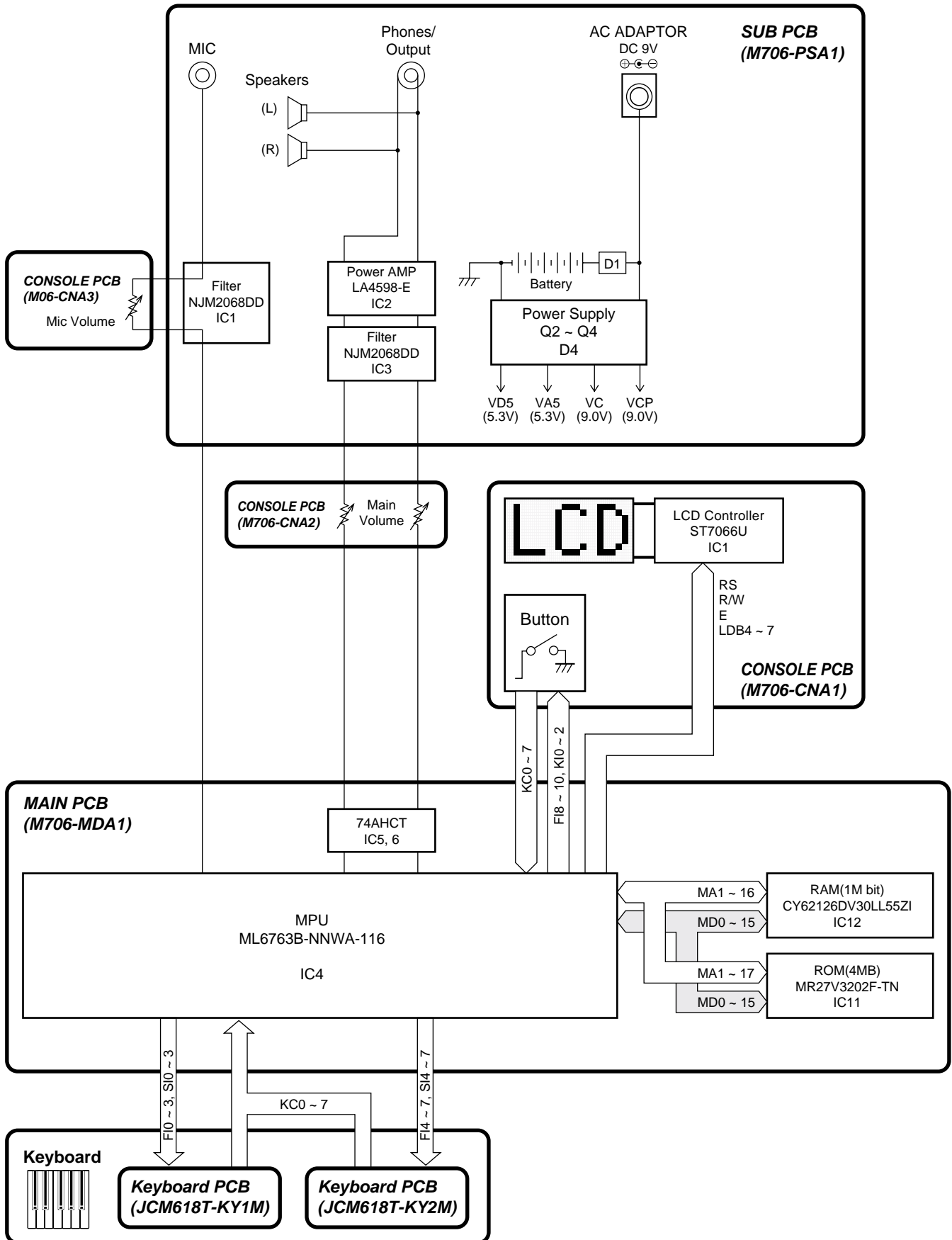
Phone output level (Vrms with 32 Ω load each channel):

with key D1 in 233 SINE LEAD	
Volume: maximum, Velocity: maximum	465 mV ± 20 %

Output level (Vrms with 47K Ω load each channel):

with key D1 in 233 SINE LEAD	
Volume: maximum, Velocity: maximum	2150 mV ± 20 %

BLOCK DIAGRAM

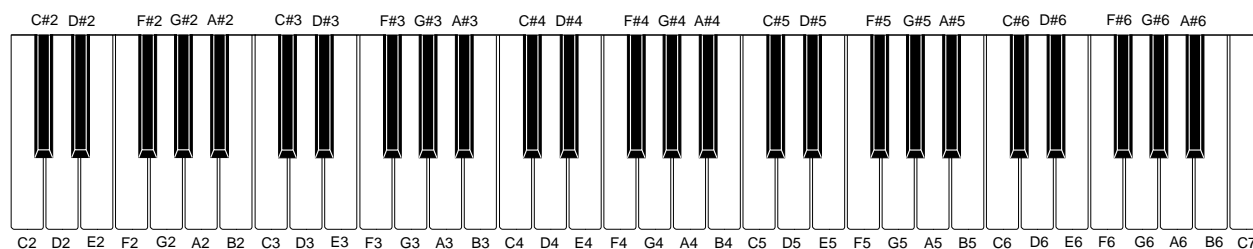


CIRCUIT DESCRIPTION

KEY MATRIX

	KC0	KC1	KC2	KC3	KC4	KC5	KC6	KC7
F10	C2①	C#2①	D2①	D#2①	E2①	F2①	F#2①	G2①
SI0	C2②	C#2②	D2②	D#2②	E2②	F2②	F#2②	G2②
FI1	G#2①	A2①	A#2①	B2①	C3①	C#3①	D3①	D#3①
SI1	G#2②	A2②	A#2②	B2②	C3②	C#3②	D3②	D#3②
FI2	E3①	F3①	F#3①	G3①	G#3①	A3①	A#3①	B3①
SI2	E3②	F3②	F#3②	G3②	G#3②	A3②	A#3②	B3②
FI3	C4①	C#4①	D4①	D#4①	E4①	F4①	F#4①	G4①
SI3	C4②	C#4②	D4②	D#4②	E4②	F4②	F#4②	G4②
FI4	G#4①	A4①	A#4①	B4①	C5①	C#5①	D5①	D#5①
SI4	G#4②	A4②	A#4②	B4②	C5②	C#5②	D5②	D#5②
FI5	E5①	F5①	F#5①	G5①	G#5①	A5①	A#5①	B5①
SI5	E5②	F5②	F#5②	G5②	G#5②	A5②	A#5②	B5②
FI6	C6①	C#6①	D6①	D#6①	E6①	F6①	F#6①	G6①
SI6	C6②	C#6②	D6②	D#6②	E6②	F6②	F#6②	G6②
FI7	G#6①	A6①	A#6①	B6①	C7①			
SI7	G#6②	A6②	A#6②	B6②	C7②			

NOMENCLATURE OF KEYS

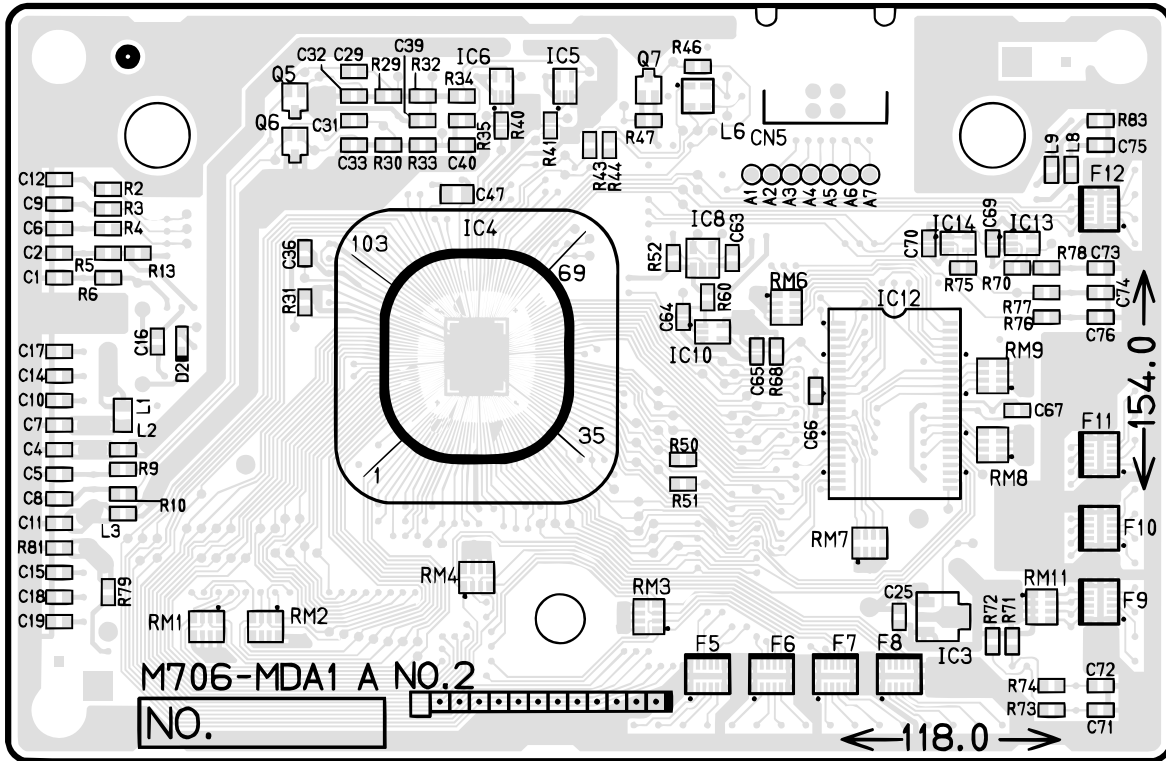


BUTTON MATRIX

	KC0	KC1	KC2	KC3	KC4	KC5	KC6	KC7
KI0		REVERB/ CHORUS	PLAY/ STOP	TEMPO▶	SCORING 3	SPLIT	2	9
KI1		ONE TOUCH PRESET	TEMPO◀	PIANO BANK	STEP 2	AUTO HARMONIZE	3	5
KI2	ECHO	REPERT	SONG BANK	STEP 1	STEP 3	LAYER	+	6
FI8	PLAY/ STOP	KEY CONTROL/ TRANPOSE▶	REW	METRONOME	SCORING 1	RIGHT	RHYTHM	TONE
FI9	SING ALONG	SETTING	FF	SPEAK	LEFT	0	4	7
FI10	KEY CONTROL/ TRANPOSE◀	SONG MEMORY	PAUSE	PRACTICE PHRASE	SCORING 2	-	1	8

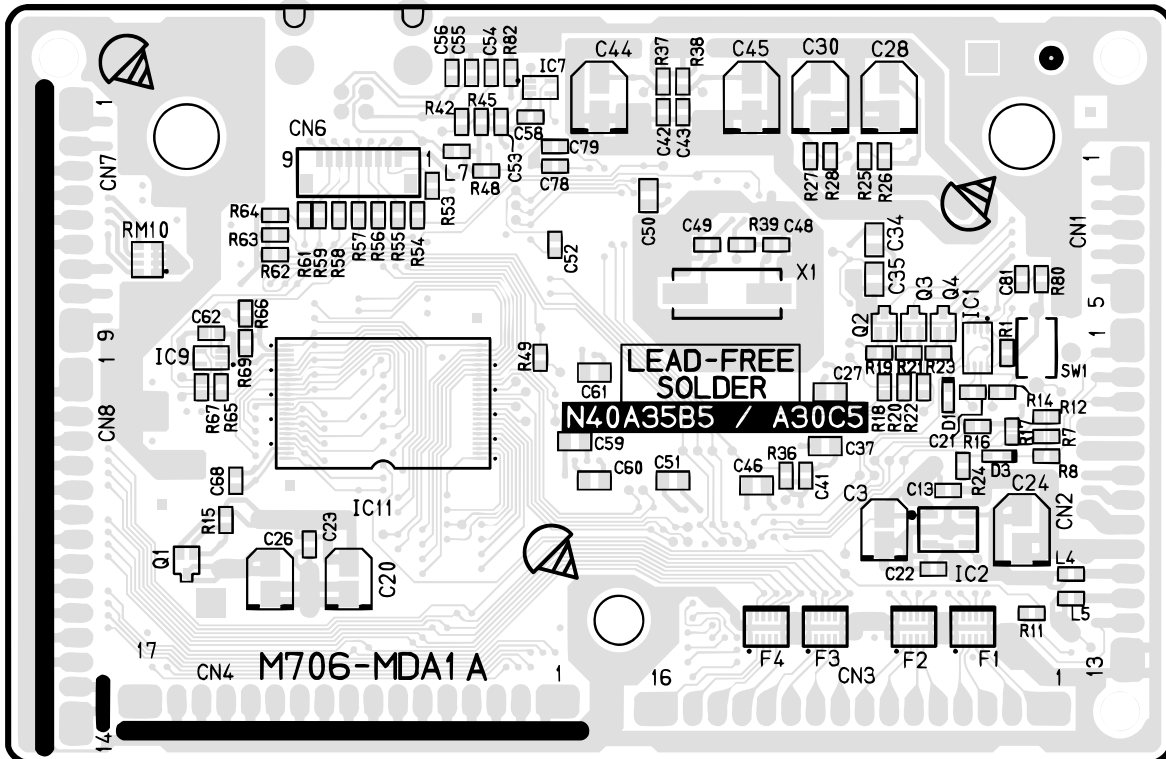
PRINTED CIRCUIT BOARD

MAIN PCB M706-MDA1



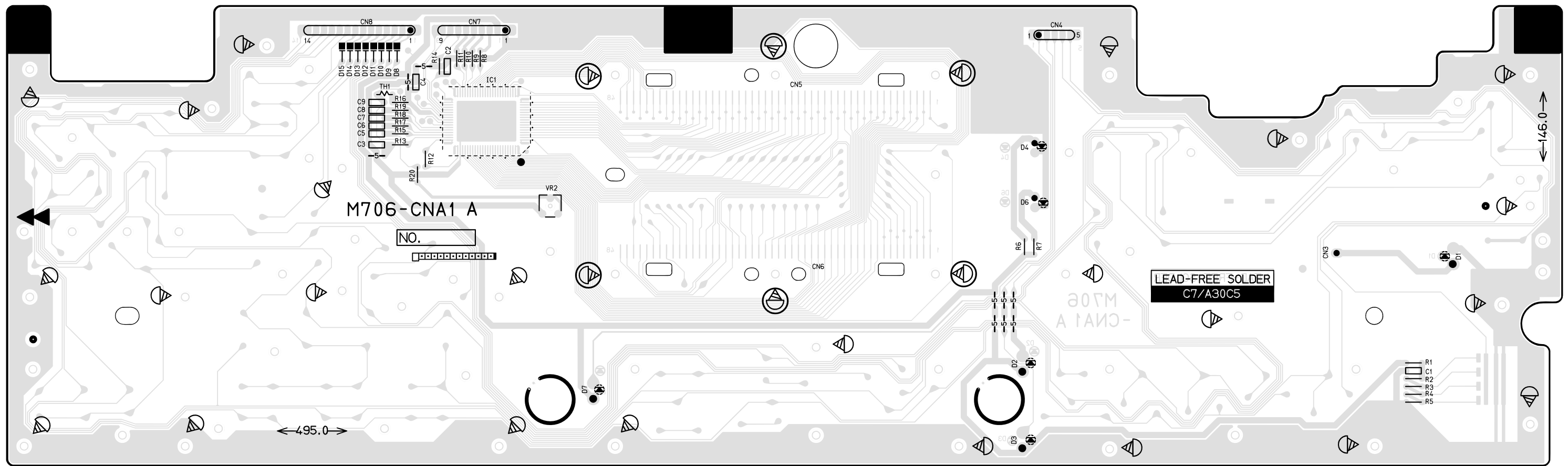
Top View

Main PCB M706-MDA1

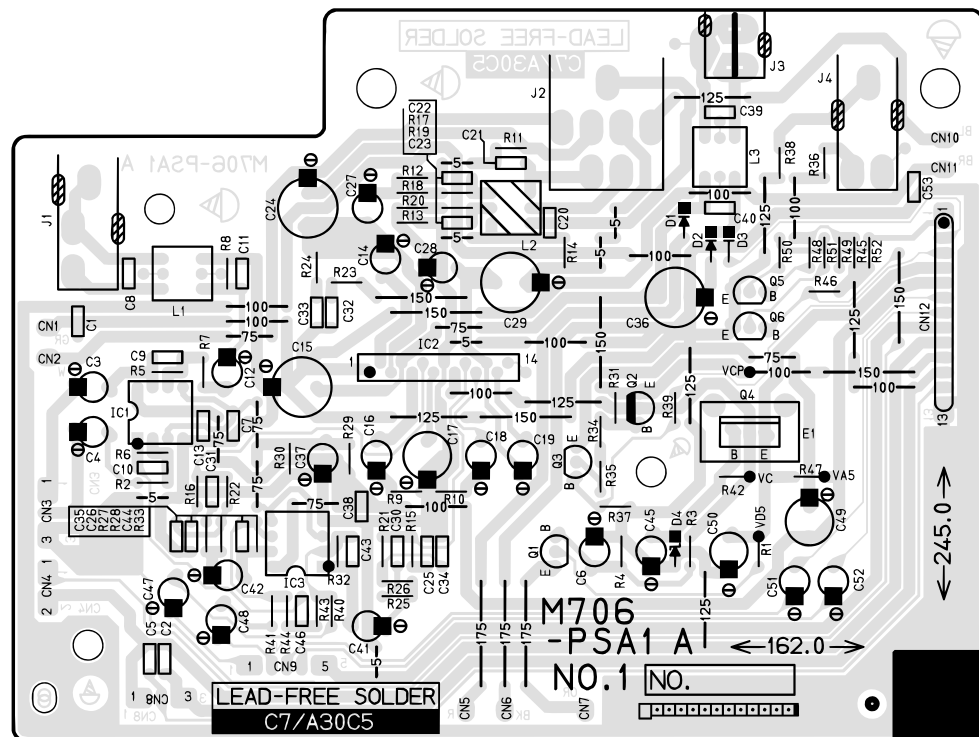


Bottom View

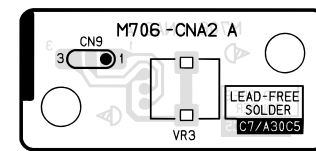
CONSOLE PCB M706-CNA1



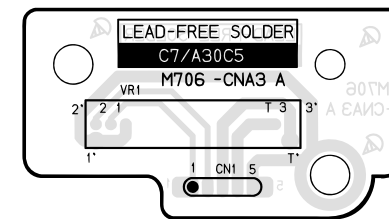
SUB PCB M706-PSA1



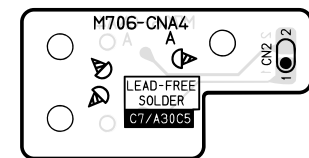
CONSOLE PCB M706-CNA2



CONSOLE PCB M706-CNA3

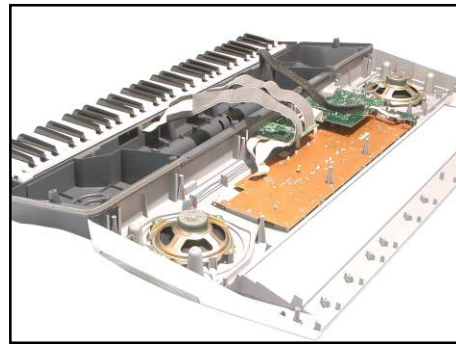
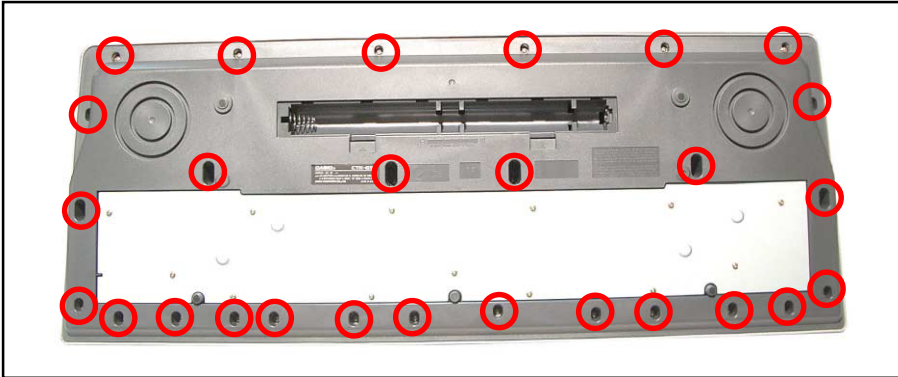


CONSOLE PCB M706-CNA4

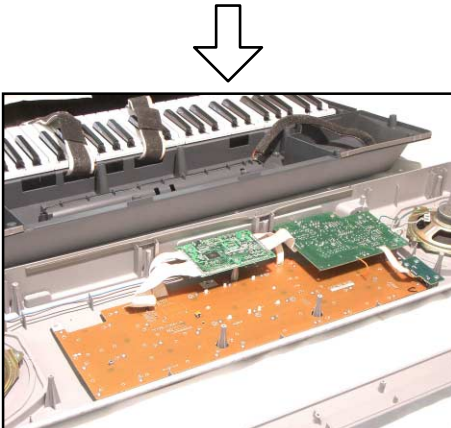
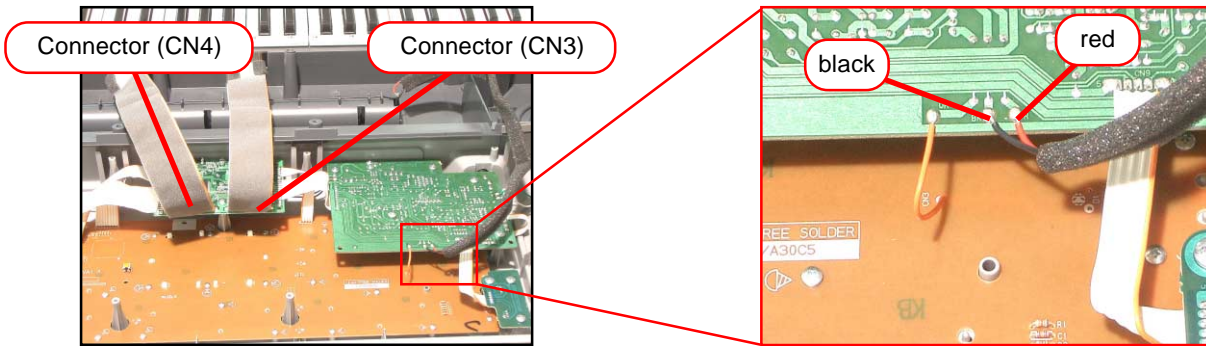


DISASSEMBLY

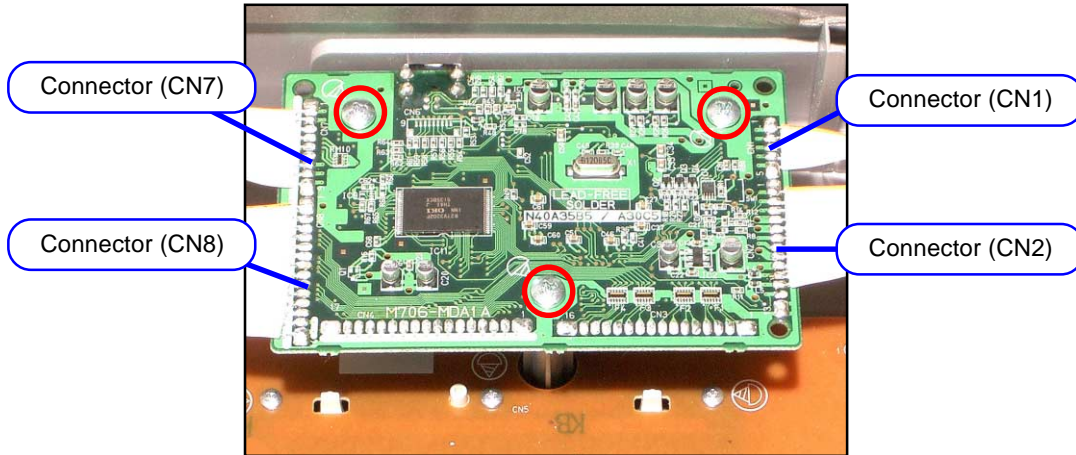
1. Remove the battery cover and then battery.
2. Remove 27 screws and then upper case.



3. Remove two lead wires by soldering.
4. Remove two connectors by soldering.
5. Make the keyboard unit and the main unit apart.

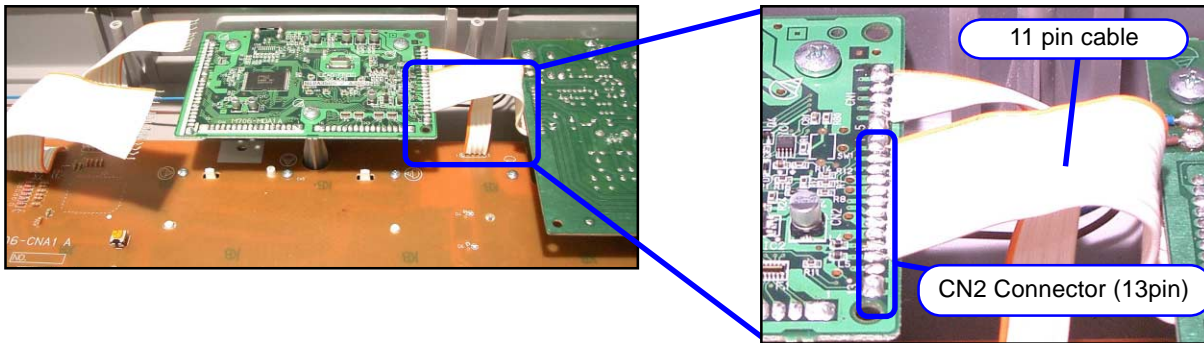


- To remove the main PCB (M706-MD1).
 6. Remove three screws on the PCB (M706-MD1).
 7. Remove four connectors by soldering.
 8. Remove the PCB (M706-MD1).

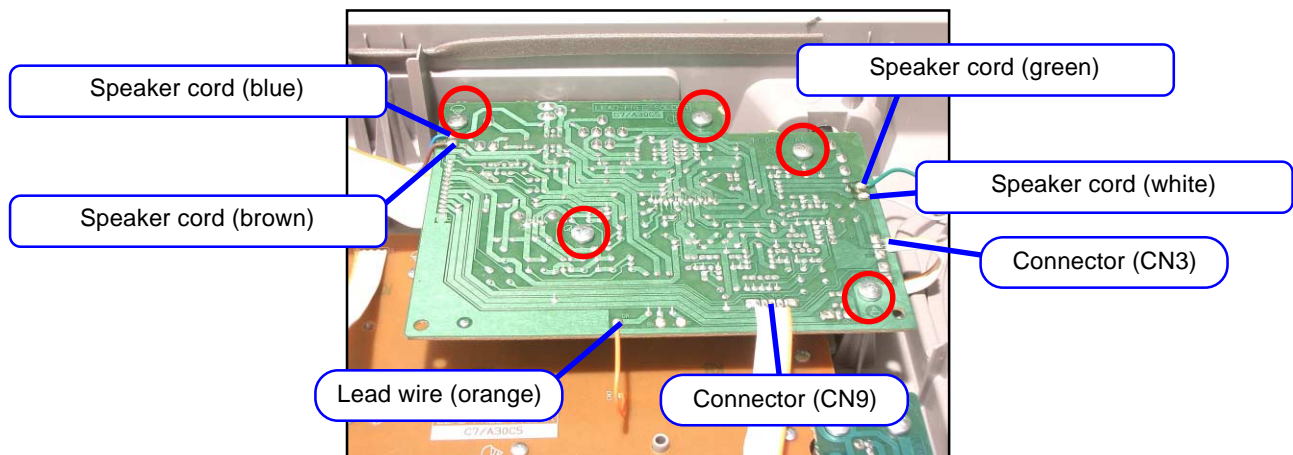


- Precaution while assembling the main PCB (M706-MD1).

Number of pins on the PCB and pins on the cable are different.
Start connecting from the NO.1 pin whose color is orange.

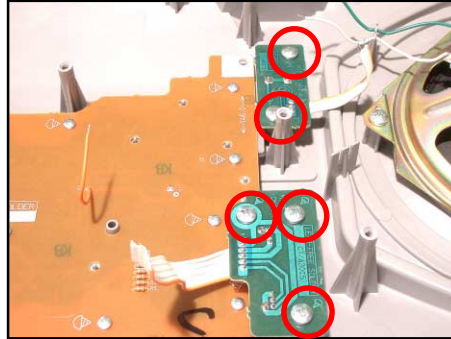


- To remove the sub PCB (M706-PSA1).
 9. Remove five screws on the PCB (M706-PSA1).
 10. Remove two connectors by soldering.
 11. Remove five lead wires by soldering.
 12. Remove the PCB (M706-PSA1).



■ To remove the console PCB (M706-CNA1, CNA2, CNA3).

13. Remove the microphone and the volume knob.
14. Remove two screws on the PCB (M706-CNA2).
15. Remove three screws on the PCB (M706-CNA3).

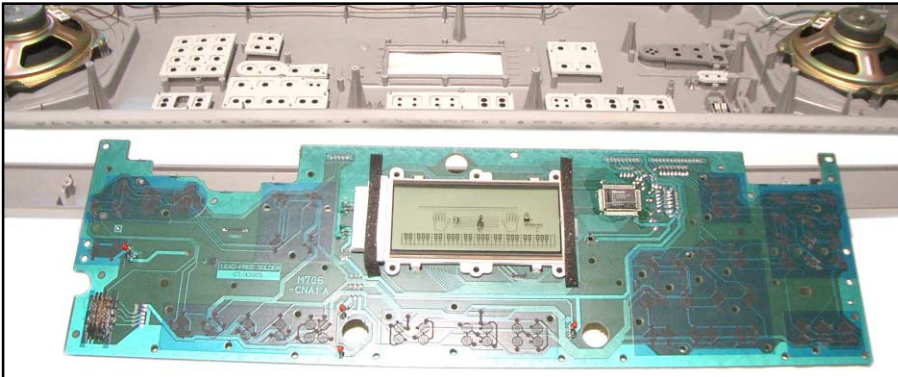
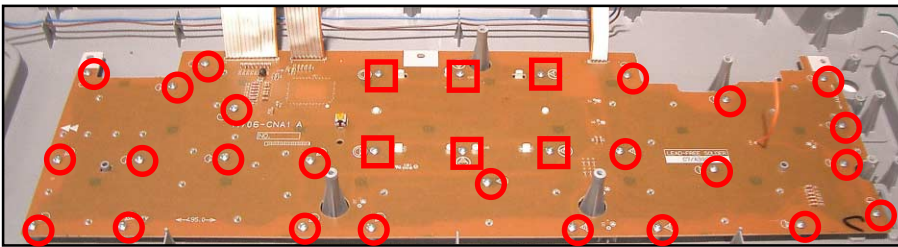


16. Remove 30 screws and then the PCB (M706-CNA1).

Caution while assembling:

6 screws fixing the LCD unit are different size from other screws.
Fixing with incorrect size of screws causes the risk of defective displaying.
Be sure to choose correct screws.

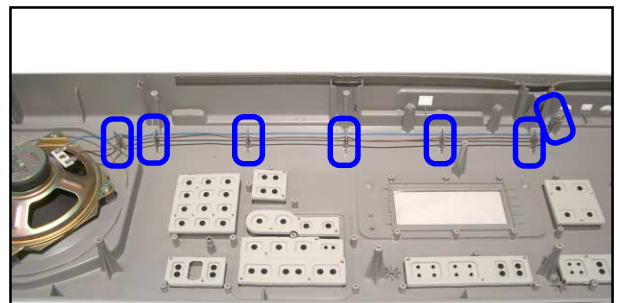
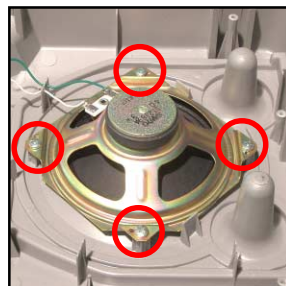
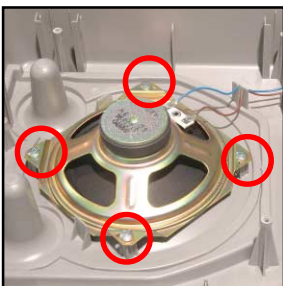
17. Remove the rubber keys.



■ To remove the speaker.

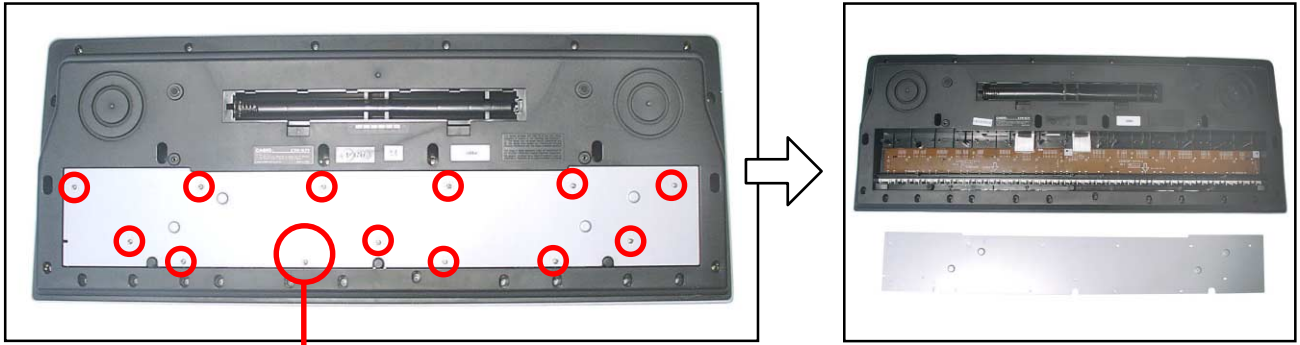
18. Remove 8 screws and then two speakers.

Note: Fix speaker cords securely.



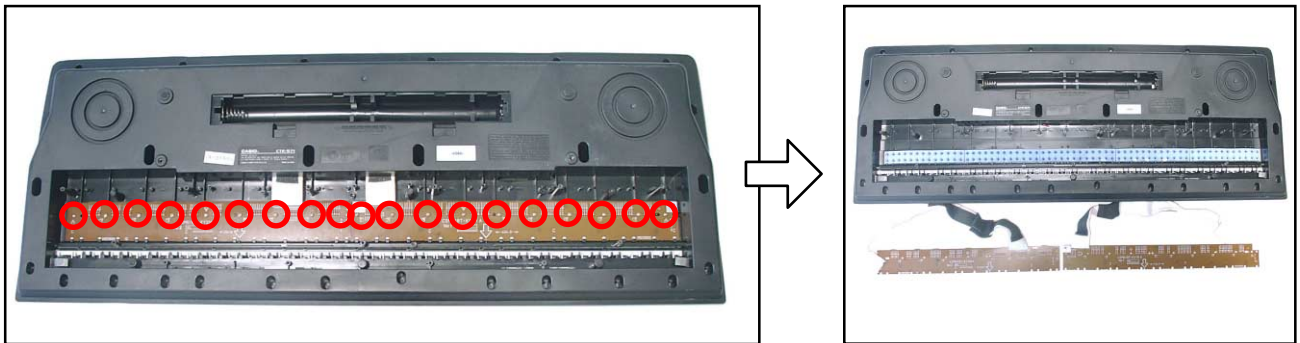
■ To remove the key PCB (CSM618T-KY1M, KY2M)

19. Remove 13 screws and the bottom case.

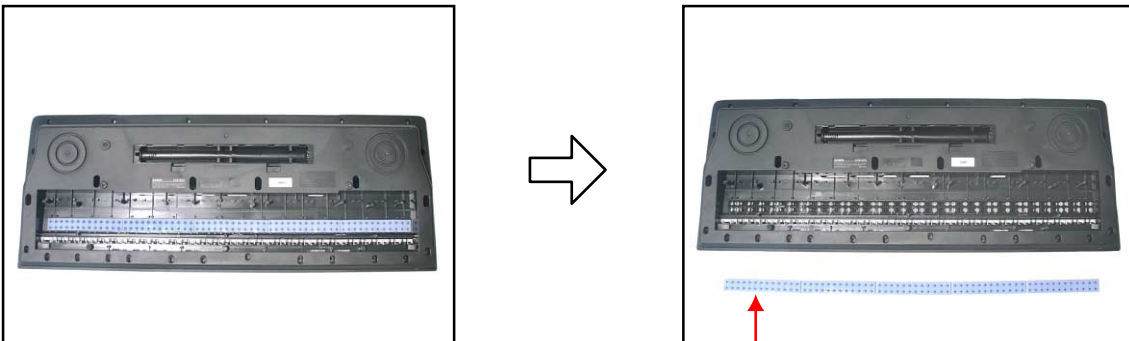


Note: Tighten the screw with the arrow mark in the figure first when reassembling.

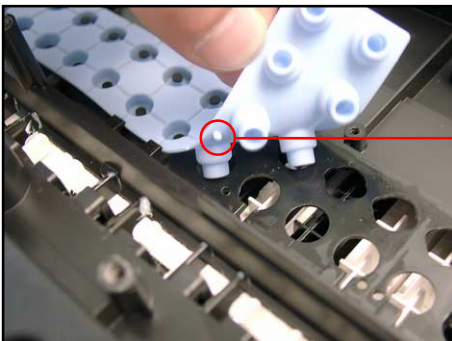
20. Remove 19 screws and then the key PCB (CSM618T-KY1M, KY2M).



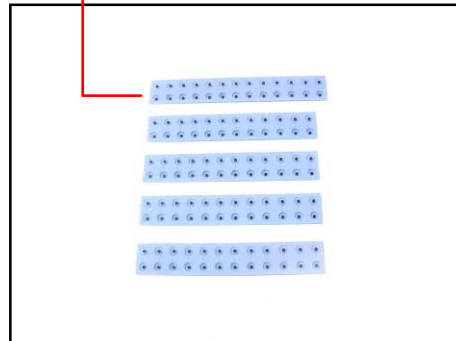
21. Remove the rubber keys.



Note: Pay attention to the positions of the rubber keys as one of them has a different length. Match the projections of the rubber keys with the holes of the lower case when reassembling.



Projection

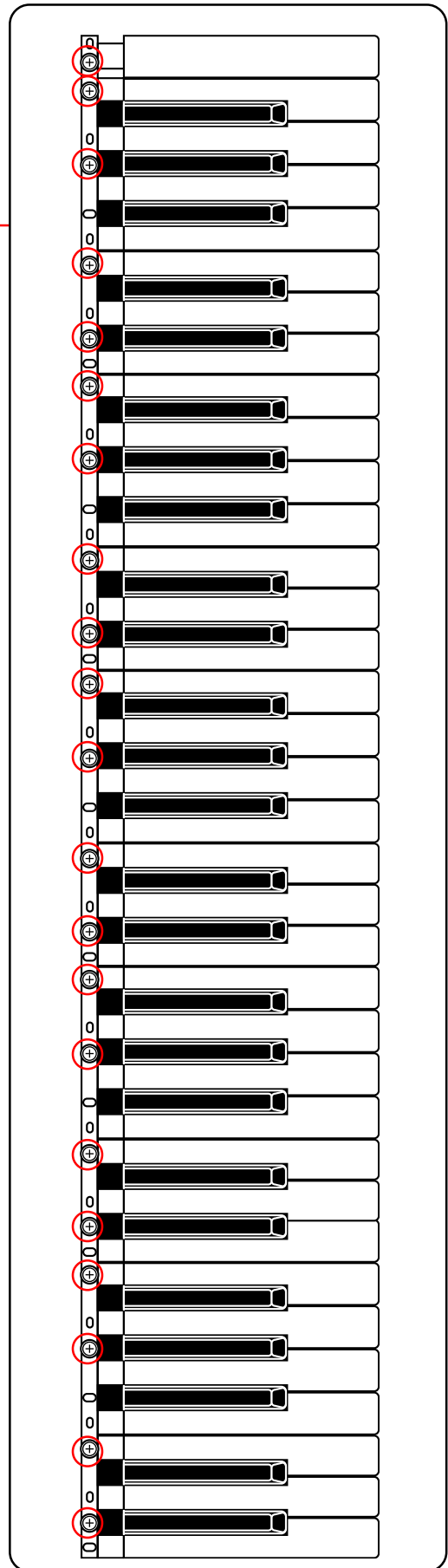


22. Remove 21 screws and then the white keys.



Note: Pay attention to the positions of the screw holes when reassembling.

23. Remove the black keys.



DIAGNOSTIC PROGRAM

■ Initial Setting

1. Connect the AC adaptor.
2. Connect a Sustain pedal.
3. "MODE" switch: NORMAL
4. "Main" volume: MAX

NOTE: If there is no Sustain pedal, Sustain pedal check can be skipped.

■ How to start diagnostic program

1. Press the "POWER" button while pressing the "0" buttons.
2. The message "TST" is displayed on LCD.
3. Release the "0" button.

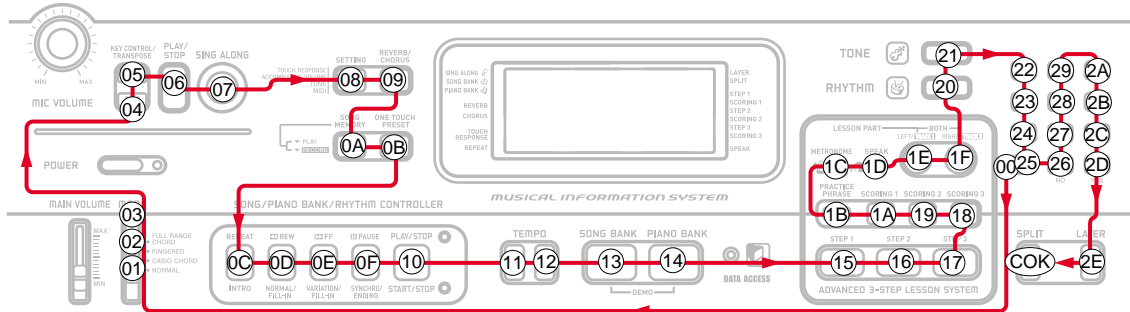
■ Diagnostic program

1. Button check

- ① Press "0" button.
* Wait for confirmation sound.
 - ② Slide switches or press buttons in the order from No.01 to No.2E.
NOTE: The button numbers are written in hexadecimal numerals.
 - ③ Press the "SPLIT" button the last.
* Wait for confirmation sound.
* The Button number appears on the LCD.
* A buzzer sounds if buttons are pressed in a wrong order, and "CER" appears on LCD.
- NOTE: This check cannot be aborted in mid-course.**

Message on LCD

00
BUTTON NO.
COK
BUTTON NO.



2. AC adaptor check

- ① Press "-" button. JOK

3. RAM check

- ① Press "+" button. AOK

4. Pedal check

- ① Press "1" button. TCH
- ② "Sustain pedal": ON SUS
- ③ "Sustain pedal": OFF

5. ROM check

- ① Press "2" button. OOK

6. Version check

- | | |
|---------------------|-----|
| ① Press "3" button. | 706 |
| ② Press "3" button. | 350 |
| ③ Press "3" button. | 340 |

7. Sound check

- | | |
|--|-----|
| ① Press the "4" button. | MIN |
| * When standing in the center, the tester hears the minimum test sound in an equal volume from both right and left speakers. | |
| ② Press the "5" button. | MID |
| * When standing in the center, the tester hears the medium test sound in an equal volume from both right and left speakers. | |
| ③ Press the "6" button. | MAX |
| * When standing in the center, the tester hears the maximum test sound in an equal volume from both right and left speakers. | |
| ④ Press the "7" button. | L |
| * When standing in the center, the tester hears the maximum test sound from the left speaker. | |
| ⑤ Press the "8" button. | R |
| * When standing in the center, the tester hears the maximum test sound from the right speaker. | |

8. LCD check

- ① Press the "STEP1" button.
 - * All character of LCD turns on.
 - * There is no lack of the dot and the character.
- ② Press the "STEP2" button.
 - * Half dots on DP3 area of LCD turns on.
 - * There is no lack of the dot and the character.
- ③ Press the "STEP2" button.
 - * Another half dots on DP3 area of LCD turns on.
 - * There is no lack of the dot and the character.
- ④ Press the "STEP3" button.
 - * Half segments of LCD turns on exclude DP3.
 - * There is no lack of the dot and the character.
- ⑤ Press the "STEP3" button.
 - * Another half segments of LCD turns on exclude DP3.
 - * There is no lack of the dot and the character.
- ⑥ Press the "LEFT" button.
 - * Block of LCD turns on by sequential.
 - * There is no lack of the dot and the character.
- ⑦ Press the "SCORING1" button.
 - * 1 octave white keys and black keys of LCD turns on by sequential.
 - * There is no lack of the dot and the character.

9. Console LED check

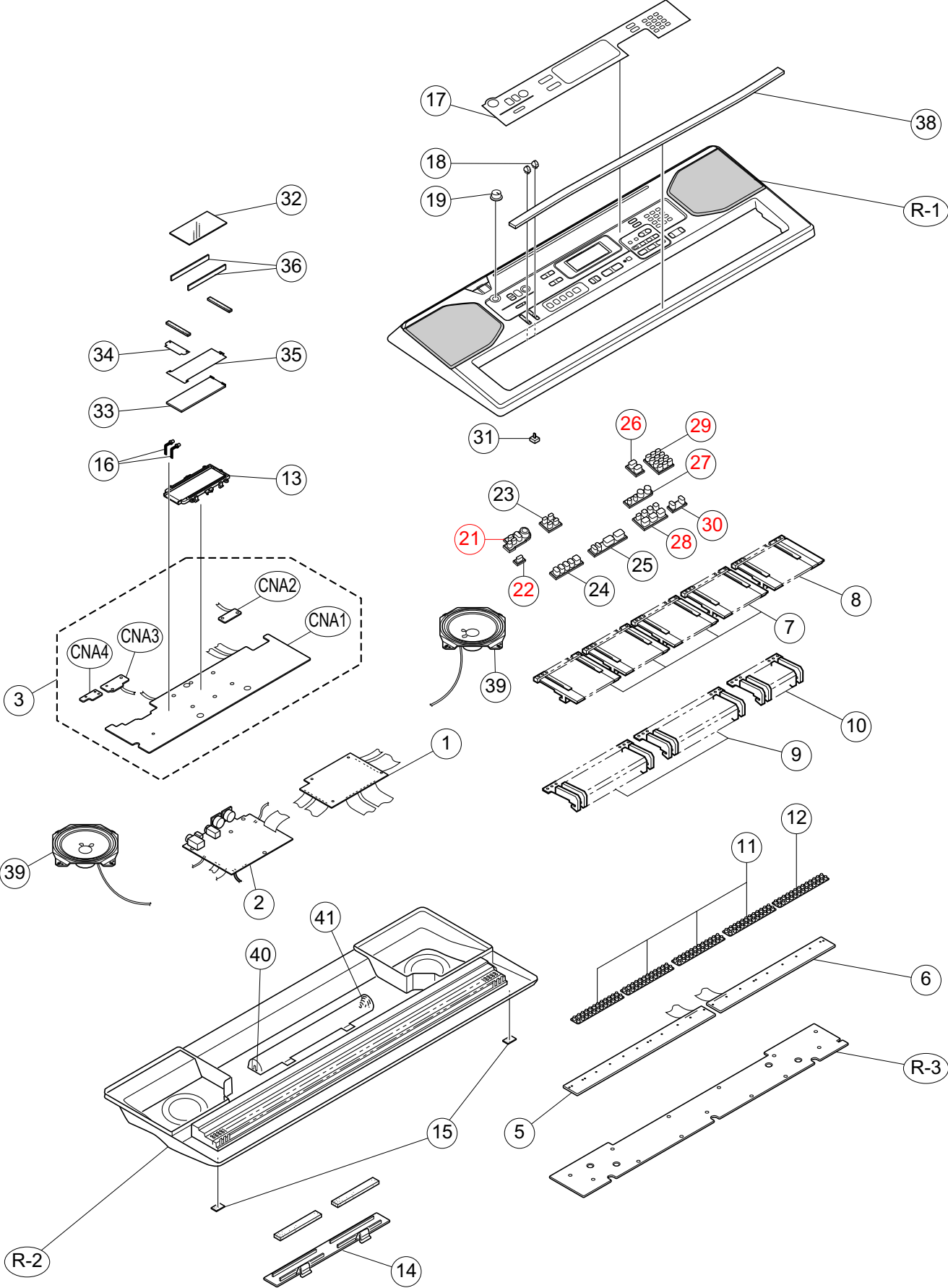
- ① Press the "SPEAK" button.
 - * Keyboard LED must light in the undermentioned order.
 - 1) DATA ACCESS
 - 2) PLAY/STOP
 - 3) START/STOP

10. APO check

- ① Press the "PRACTICE PHRASE" button.
 - * Go out from TEST mode (Power off).
 - * The LCD turns off.

DIAGNOSTIC PROGRAM IS FINISHED.

EXPLODED VIEW



PARTS LIST

CTK-800

Notes: This parts list does not include the cosmetic parts, which parts are marked with item No. "R-X" in the exploded view.

Contact our spare parts department if you need these parts for refurbish.

1. Prices and specifications are subject to change without prior notice.
2. As for spare parts order and supply, refer to the "GUIDEBOOK for Spare parts Supply", published seperately.
3. The numbers in item column correspond to the same numbers in drawing.

N	Item	Parts Code	Parts Name	Specification	QTY	Price Code	R	Remarks
Main PCB								
N	1	10203305	PCB ASSY/MAIN	TK-RJM505831*001	1		A	
	IC1	10197809	IC	TC7WH123FU(TE12L.F	1		C	
	IC2	10158804	IC	R1154H033B-T1-FB	1		C	
N	IC3	10158805	IC	RH5RL33AA-T1-FA	1		C	
N	IC5,6,13,14	10116986	IC	SN74AHCT1G08DCKR	4		C	
	IC7	10197555	IC	TC7SZ14FU(TE85L.F)	1		C	
N	IC8	10159723	IC	RN5VD28AA-TR-FA	1		C	
	IC10	10197554	IC	TC7SZ126FU(TE85L.F	1		C	
N	IC12	10199777	MEMORY	CY62126DV30LL55ZXI	1		C	
	Q2,3,4	10116461	TRANSISTOR	KTC4075GR-RTK	3		C	
	Q5,6	10154941	TRANSISTOR	KTA2014GR-RTK	2		C	
N	Q7	10153685	TRANSISTOR	2SJ346(TE85L.F)	1		C	
	D1-3	10009218	DIODE	1SS400TE61	3		C	
	X1	10133372	RESONATOR	SMD-49-12M	1		X	
	F1,2,,8,9,12	10122976	NETWORK/R-C	EZASTB63ABJ	5		B	
	F3-7,10,11	10122975	NETWORK/R-C	EZASSB516BJ	7		B	
	L2-5,7,8,9	10095204	COIL	BLM18AG102SN1D	7		X	
	L6	10158809	COIL	DLP31SN221SL2L	1		X	
	L1	10122963	COIL	BLM21AG102SN1D	1		X	
	CN5	10162810	CONNECTOR	UBR27-4K9G00	1		X	
Sub PCB								
N	2	10203306	PCB ASSY/PSA1	TK-RJM505832*001	1		B	
	IC1,3	21210072	IC	NJM2068D-D	2		C	
	IC2	10190010	IC	LA4598-E	1		C	
	Q1-3	10079927	TRANSISTOR	KTC3199GR-AT	3		C	
	Q4	10085192	TRANSISTOR	KTC2026Y	1		C	
	Q2	10079926	TRANSISTOR	KTA1273Y-AT	1		C	
	D2	10080347	DIODE	1A2TA	1		C	
	D3	10079928	DIODE	1SS133TA	1		C	
N	D4	10162757	DIODE/ZENER	DZ6.2BSATA	1		C	
	D1	10079929	DIODE/ZENER	SRT14TA	1		X	
N	J3	10161308	CONNECTOR	DJ-0702O-015	1		X	
	J4	69325081	CONNECTOR	JY-6314-01-030	1		X	
	J1	69325358	CONNECTOR	JY-6314-01-130	1		X	
	J2	69325082	CONNECTOR	JY-6316-01-070	1		X	
	L2	10057360	COIL	R2318-RB53-856396	1		C	
	L1,3	10056228	COIL	R2318-RB53-856397	2		C	
Console PCB								
N	3	10203307	PCB ASSY/CAN	TK-RJM505835*001	1		C	
	IC1	10143126	LSI	ST7066U-0A-Q	1		C	
	TH1	10080368	THERMISTOR	MF11-103K	1		C	
	D8-15	23901344	DIODE	1SS133T-77	8		C	
	D3	10106131	LED	1154HD-B5/6-90	1		C	
N	D7	10203864	LED	1154HD-B5/7.5-90	1		C	
	VR1	27652213	VARIABLE RESISTOR	RS20H121-2KB	1		C	
N	VR3	10174471	VARIABLE RESISTOR	RK09K1130D48	1		C	
N	VR2	69304870	VARIABLE RESISTOR	EVND8AA03B53	1		C	

Notes : Q- Quantity per unit

R- Rank

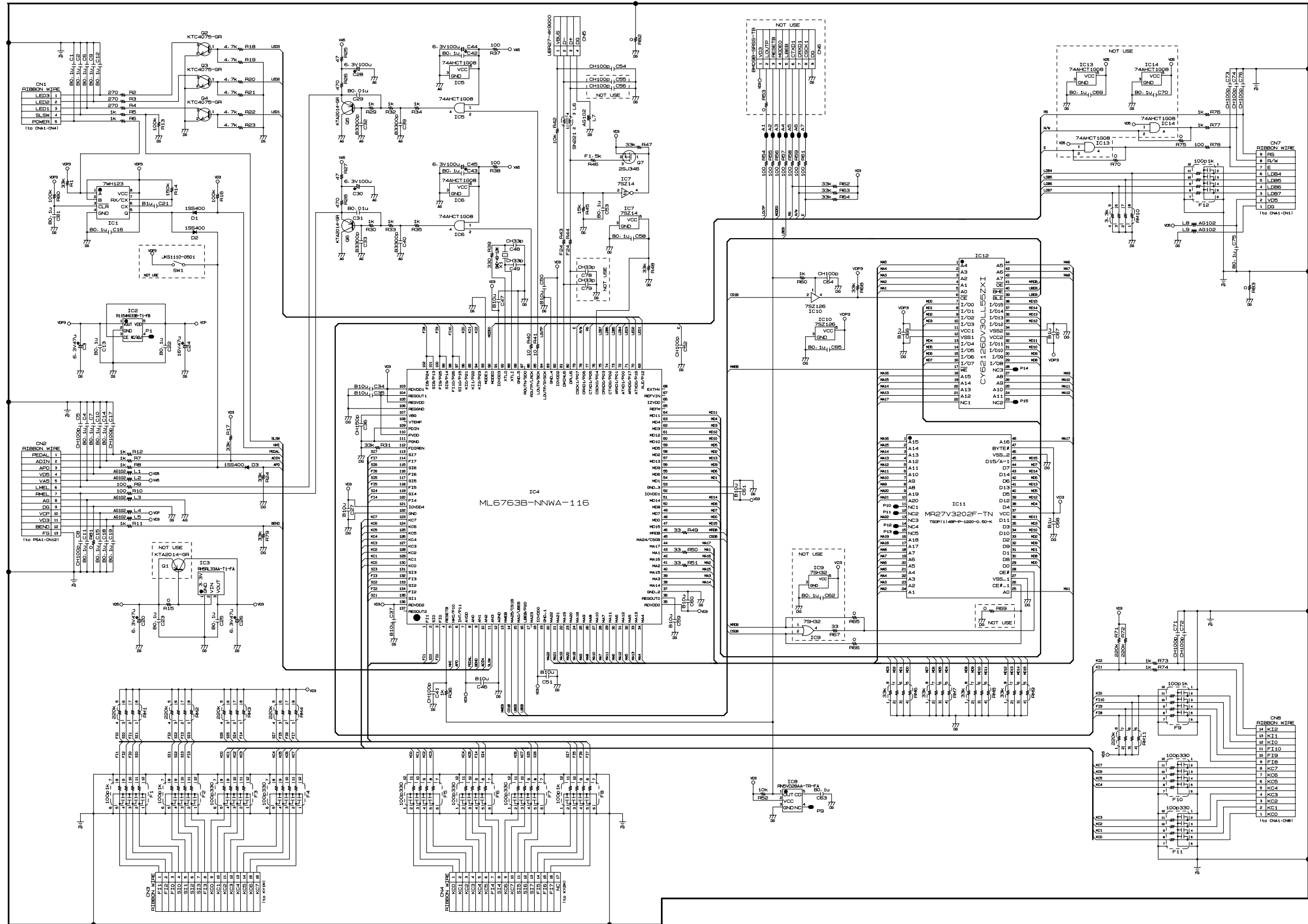
N	Item	Parts Code	Parts Name	Specification	QTY	Price Code	R	Remarks
Keyboard PCBs								
	5	10053891	PCB ASSY/KY1M	M140687*9	1		C	
	D501 - D564	23010101	DIODE	1S2473T-77-T	64		X	
	6	10053893	PCB ASSY/KY2M	M140688*9	1		C	
	D565 - D622	23010101	DIODE	1S2473T-77-T	58		X	
Keyboard Unit								
	7	69222720	KEY SET/LT WHITE	M312118*1	4		C	
	8	69222730	KEY SET/LT WHITE	M312118*2	1		C	
	9	69068481	KEY SET/LT BLACK 10P	M140369A-3	2		C	
	10	69068591	KEY SET/LT BLACK 5P	M140369A-4	1		C	
	11	69222762	RUBBER/CONTACT	M211704B-1	4		B	
	12	69222772	RUBBER/CONTACT	M211705B-1	1		B	
Case Unit								
N	13	10199878	REFLECTOR	RJM505455-001V01	1		C	
N	14	10203310	COVER ASSY/BATTERY	TK-M341235*003	1		C	
	15	69273030	PACKING	M440775-1	2		C	
	16	10116376	LED	SLR343BBT3F	2		C	
N	17	10199865	PLATE/DISPLAY	RJM505452-001V01	1		C	
	18	10199714	KNOB/SLIDE	RJM503803-002V01	2		C	
N	19	10197646	KNOB/ROTARY	RJM502503-010V01	1		C	
N	21	10199866	RUBBER KEY/A	RJM505441-001V01	1		C	
N	22	10199867	RUBBER KEY/B	RJM505442-001V01	1		C	
N	23	10199868	RUBBER KEY/C	RJM505443-001V01	1		C	
N	24	10199869	RUBBER KEY/D	RJM505444-001V01	1		C	
N	25	10199870	RUBBER KEY/E	RJM505445-001V01	1		C	
N	26	10199871	RUBBER KEY/F	RJM505446-001V01	1		C	
N	27	10199872	RUBBER KEY/G	RJM505447-001V01	1		C	
N	28	10199873	RUBBER KEY/H	RJM505448-001V01	1		C	
N	29	10199874	RUBBER KEY/J	RJM505449-001V01	1		C	
N	30	10199875	RUBBER KEY/K	RJM505450-001V01	1		C	
	31	69270510	SWITCH/SLIDE KNOB	CSB-08D	1		C	
N	32	10199877	LCD	TR4363N	1		C	
N	33	10199879	PLATE/BL	RJM505456-001V01	1		C	
N	34	10199881	TOP PIECE	RJM505457-001V01	1		C	
N	35	10199880	FILM	RJM505454-001V01	1		C	
N	36	10199876	CONNECTOR	RJM505453-001V01	2		C	
	38	69224480	DUMPER/KEY	M412324-1	1		C	
	39	38311096	SPEAKER	S12J89A	2		C	
	40	69032150	SPRING/BATTERY(+)	M41330-1	1		C	
	41	69026141	SPRING/BATTERY(-)	M41226A-1	1		C	
Accessories								
	-	10107083	STAND/MUSIC	M141071-5	1		C	
	-	69321739	BATTERY	R20PNR/2SK	3		C	
N	-	10199852	LABEL/RATING	M341007-053V01	1		X	
	-	10197572	CD ROM	USB12CDROMWL1B	1		C	
Refurbish								
N	R-1	10203308	CASE ASSY/UPPER	TK-RJM505748*001	1		C	
	R-2	10086645	CASE ASSY/MIDDLE	M141274*008	1		C	
	R-3	69069252	PLATE/BOTTOM	M240573-2	1		C	

Notes : Q- Quantity per unit

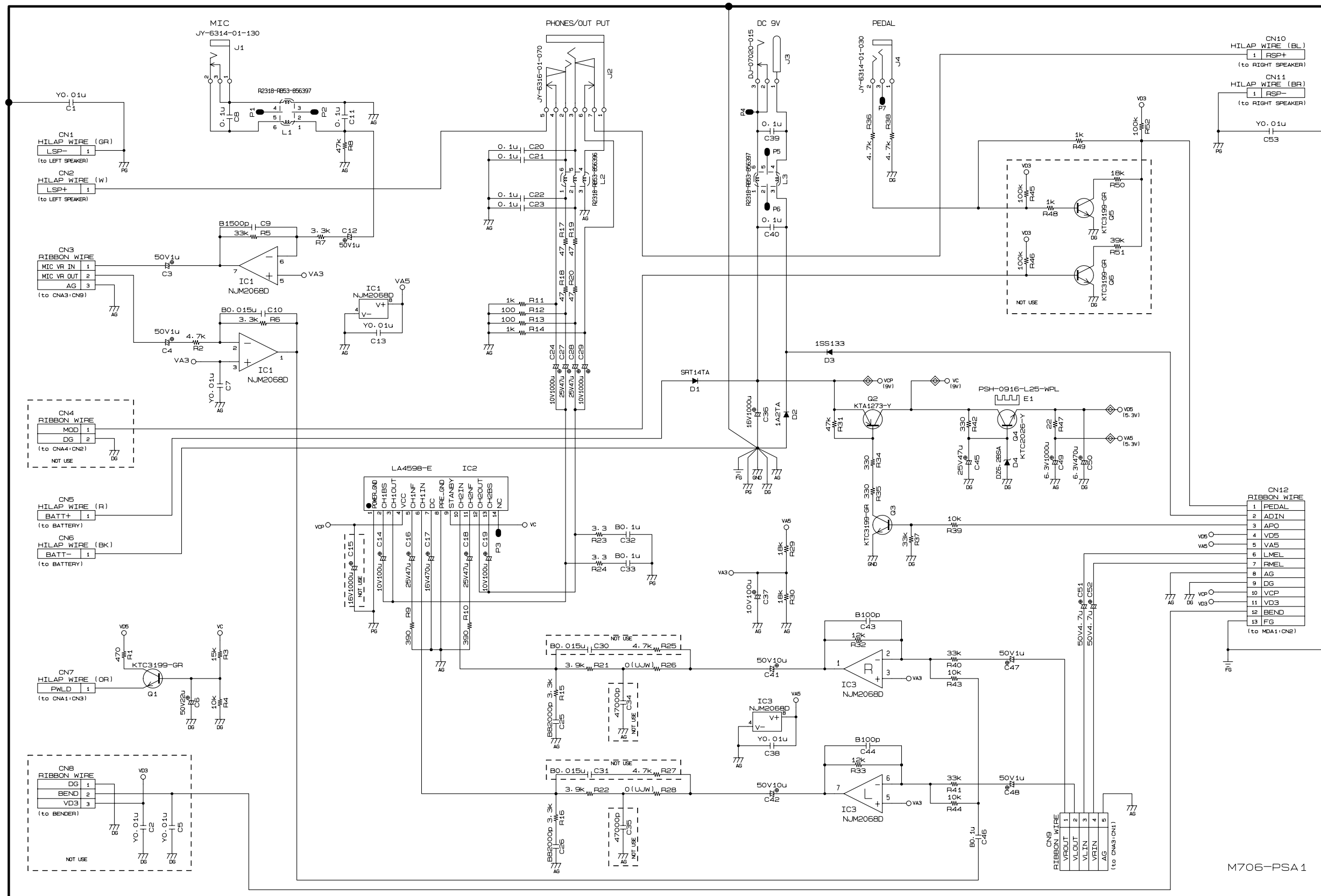
R- Rank

SCHEMATIC DIAGRAMS

MAIN PCB M706-MDA1

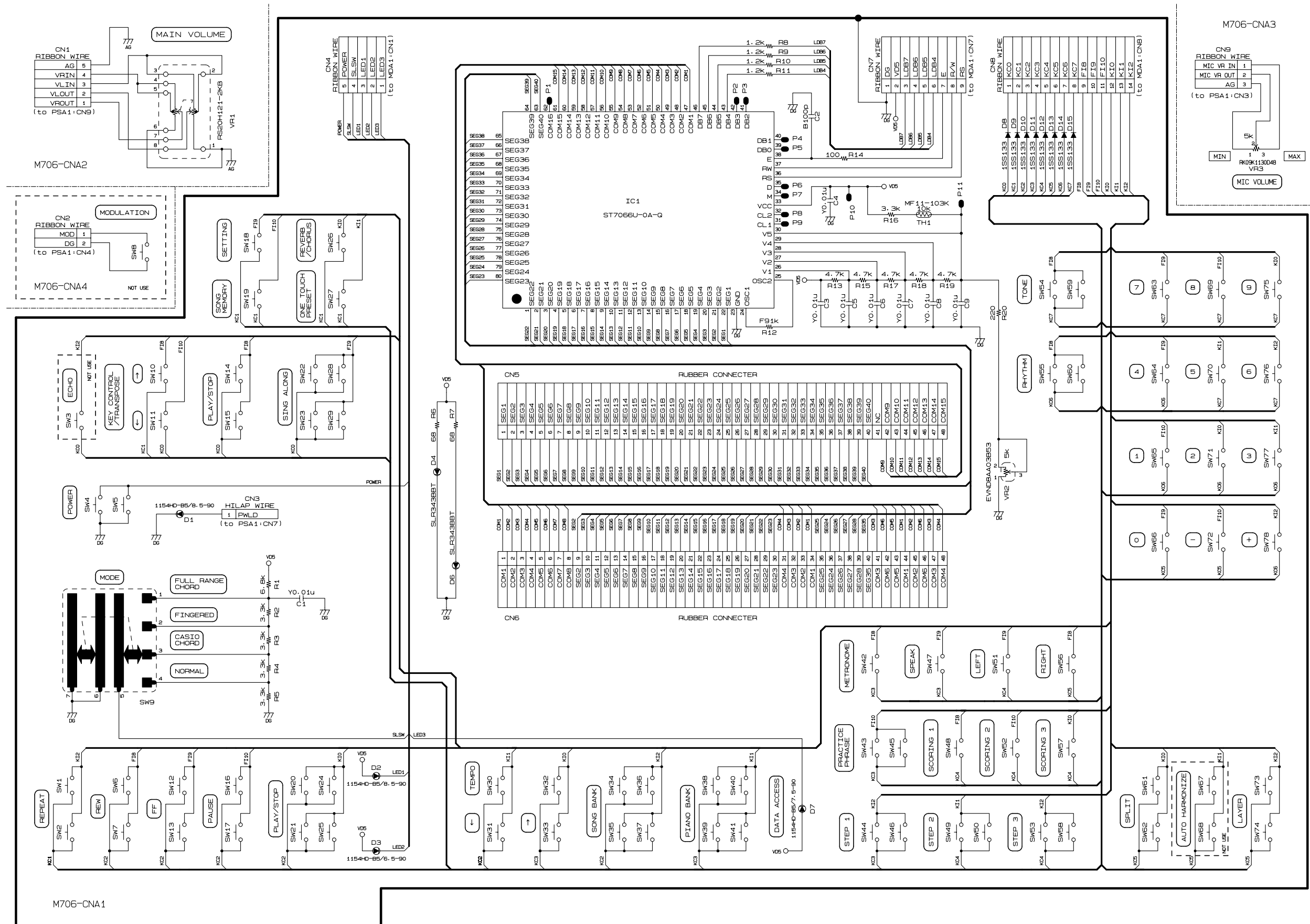


SUB PCB M706-PSA1



M706-PSA1

CONSOLE PCBs M706-CNA1, CNA2, CNA3, CNA4

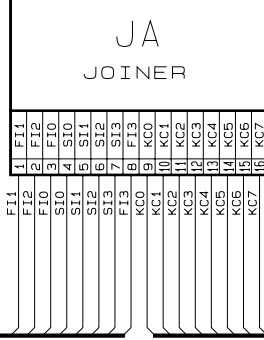


Keyboard PCBs JCM618T-KY1M, KY2M

NOTE

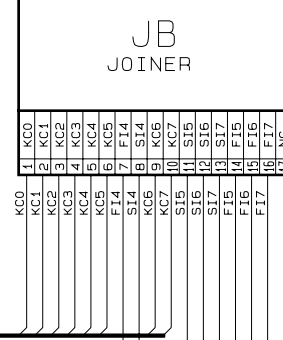
▽^{PI} 1S2473T-77-T
(1SS133T-77-T)

JCM618T-KY1M



KC0	D501	DI	SM501	C2	①	F10
K00	D502	DI	SM502	C2	①	S10
KC1	D503	DI	SM503	C2#	①	F10
K01	D504	DI	SM504	C2	①	S10
KC2	D505	DI	SM505	D2	①	F10
K02	D506	DI	SM506	D2	①	S10
KC3	D507	DI	SM507	D2#	①	F10
K03	D508	DI	SM508	D2	①	S10
KC4	D509	DI	SM509	E2	①	F10
K04	D510	DI	SM510	E2	①	S10
KC5	D511	DI	SM511	F2	①	F10
K05	D512	DI	SM512	F2	①	S10
KC6	D513	DI	SM513	F2#	①	F10
K06	D514	DI	SM514	F2	①	S10
KC7	D515	DI	SM515	G2	①	F10
K07	D516	DI	SM516	G2	①	S10
KC0	D517	DI	SM517	G2#	①	F11
K00	D518	DI	SM518	G2	①	S11
KC1	D519	DI	SM519	A2	①	F11
K01	D520	DI	SM520	A2	①	S11
KC2	D521	DI	SM521	A2#	①	F11
K02	D522	DI	SM522	A2	①	S11
KC3	D523	DI	SM523	B2	①	F11
K03	D524	DI	SM524	B2	①	S11
KC4	D525	DI	SM525	C3	①	F11
K04	D526	DI	SM526	C3	①	S11
KC5	D527	DI	SM527	C3#	①	F11
K05	D528	DI	SM528	C3	①	S11
KC6	D529	DI	SM529	D3	①	F11
K06	D530	DI	SM530	D3	①	S11
KC7	D531	DI	SM531	D3#	①	F11
K07	D532	DI	SM532	D3	①	S11
K00	D533	DI	SM533	E3	①	F12
K00	D534	DI	SM534	E3	①	S12
KC1	D535	DI	SM535	F3	①	F12
K01	D536	DI	SM536	F3	①	S12
KC2	D537	DI	SM537	F3#	①	F12
K02	D538	DI	SM538	F3	①	S12
KC3	D539	DI	SM539	G3	①	F12
K03	D540	DI	SM540	G3	①	S12
KC4	D541	DI	SM541	G3#	①	F12
K04	D542	DI	SM542	G3	①	S12
KC5	D543	DI	SM543	A3	①	F12
K05	D544	DI	SM544	A3	①	S12
KC6	D545	DI	SM545	A3#	①	F12
K06	D546	DI	SM546	A3	①	S12
KC7	D547	DI	SM547	B3	①	F12
K07	D548	DI	SM548	B3	①	S12
K00	D549	DI	SM549	C4	①	F13
K00	D550	DI	SM550	C4	①	S13
KC1	D551	DI	SM551	C4#	①	F13
K01	D552	DI	SM552	C4	①	S13
KC2	D553	DI	SM553	D4	①	F13
K02	D554	DI	SM554	D4	①	S13
KC3	D555	DI	SM555	D4#	①	F13
K03	D556	DI	SM556	D4	①	S13
KC4	D557	DI	SM557	E4	①	F13
K04	D558	DI	SM558	E4	①	S13
KC5	D559	DI	SM559	F4	①	F13
K05	D560	DI	SM560	F4	①	S13
KC6	D561	DI	SM561	F4#	①	F13
K06	D562	DI	SM562	F4	①	S13
KC7	D563	DI	SM563	G4	①	F13
K07	D564	DI	SM564	G4	①	S13

JCM618T-KY2M



KC0	D565	DI	SM565	G4#	①	F14
K00	D566	DI	SM566	G4	①	S14
KC1	D567	DI	SM567	A4	①	F14
K01	D568	DI	SM568	A4	①	S14
KC2	D569	DI	SM569	A4#	①	F14
K02	D570	DI	SM570	A4	①	S14
KC3	D571	DI	SM571	B4	①	F14
K03	D572	DI	SM572	B4	①	S14
KC4	D573	DI	SM573	C5	①	F14
K04	D574	DI	SM574	C5	①	S14
KC5	D575	DI	SM575	C5#	①	F14
K05	D576	DI	SM576	C5	①	S14
KC6	D577	DI	SM577	D5	①	F14
K06	D578	DI	SM578	D5	①	S14
KC7	D579	DI	SM579	D5#	①	F14
K07	D580	DI	SM580	D5	①	S14
K00	D581	DI	SM581	E5	①	F15
K00	D582	DI	SM582	E5	①	S15
KC1	D583	DI	SM583	F5	①	F15
K01	D584	DI	SM584	F5	①	S15
KC2	D585	DI	SM585	F5#	①	F15
K02	D586	DI	SM586	F5	①	S15
KC3	D587	DI	SM587	G5	①	F15
K03	D588	DI	SM588	G5	①	S15
KC4	D589	DI	SM589	G5#	①	F15
K04	D590	DI	SM590	G5	①	S15
KC5	D591	DI	SM591	A5	①	F15
K05	D592	DI	SM592	A5	①	S15
KC6	D593	DI	SM593	A5#	①	F15
K06	D594	DI	SM594	A5	①	S15
KC7	D595	DI	SM595	B5	①	F15
K07	D596	DI	SM596	B5	①	S15
K00	D597	DI	SM597	C6	①	F16
K00	D598	DI	SM598	C6	①	S16
KC1	D599	DI	SM599	C6#	①	F16
K01	D600	DI	SM600	C6	①	S16
KC2	D601	DI	SM601	D6	①	F16
K02	D602	DI	SM602	D6	①	S16
KC3	D603	DI	SM603	D6#	①	F16
K03	D604	DI	SM604	D6	①	S16
KC4	D605	DI	SM605	E6	①	F16
K04	D606	DI	SM606	E6	①	S16
KC5	D607	DI	SM607	F6	①	F16
K05	D608	DI	SM608	F6	①	S16
KC6	D609	DI	SM609	F6#	①	F16
K06	D610	DI	SM610	F6	①	S16
KC7	D611	DI	SM611	G6	①	F16
K07	D612	DI	SM612	G6	①	S16
K00	D613	DI	SM613	G6#	①	F17
K00	D614	DI	SM614	G6	①	S17
KC1	D615	DI	SM615	A6	①	F17
K01	D616	DI	SM616	A6	①	S17
KC2	D617	DI	SM617	A6#	①	F17
K02	D618	DI	SM618	A6	①	S17
KC3	D619	DI	SM619	B6	①	F17
K03	D620	DI	SM620	B6	①	S17
KC4	D621	DI	SM621	C7	①	F17
K04	D622	DI	SM622	C7	①	S17

Ver.1 : Dec. 2009

- Correction of the EXPLODED VIEW (P15)

CASIO COMPUTER CO.,LTD.

Overseas Service Division

6-2, Hon-machi 1-Chome
Shibuya-ku, Tokyo 151-8543, Japan