

CONTENTS

Specifications	1
Circuit Description	2
Printed Circuit Board	3
Diagnostic Program	6
Exploded View	9
Parts List	10
Schematic Diagrams	13

SPECIFICATIONS

GENERAL

Keyboard:	61 standard-size keys, 5 octaves (with touch response; 1, 2, off)
Key Light System:	Can be turned on and off (up to 10 keys can be lit at the same time)
Tones:	514 (372 panel tones + 128 General MIDI tones + 14 drum sets); with layer and split
Digital Effects:	Reverb (4 types), Chorus (4 types)
Polyphony:	32 notes maximum (16 for certain tones)

Auto Accompaniment

Rhythm Patterns:	120
Chords:	3 fingering methods (CASIO CHORD, FINGERED, FULL RANGE CHORD)
Rhythm Controller:	START/STOP, INTRO, NORMAL/FILL-IN, VARIATION/FILL-IN, SYNCHRO/ENDING
Accomp Volume:	0 to 127 (128 steps)

<Advanced 3-Step Lesson System>

3-step Lesson:	3 lessons (Step 1, 2, 3)
Playback:	Repeat play of a single tune
Lesson Part:	Left hand, right hand, both hands
Evaluation Mode:	Scoring 1, Scoring 2, Scoring 3, Phrase Practice
Voice Fingering Guide:	On/Off

Song Bank, Piano Bank

Number of Tunes:	100 (Song Bank/Karaoke: 50, Piano Bank: 50)
Controllers:	PLAY/STOP, PAUSE, FF, REW, REPEAT

User Songs:	Number of Songs: Up to 10 download songs Capacity: Approximately 320 KB* * Calculated based on 1 KB = 1024 bytes.
--------------------	---

Karaoke Mode

Number of Tunes:	Song Bank/Karaoke: 50
Controllers:	PLAY/STOP, PAUSE, FF, REW, REPEAT, KEY CONTROL (25 steps, -12 semitones to +12 semitones)

Metronome:	On/Off
Beat Specification:	0, 2 to 6

Song Memory

Number of Songs:	Two (1 Lesson Recording, 1 Performance Recording)
Recorded Data:	Lesson Recording: Right-hand part, left-hand part, both-hand parts Performance Recording: Track 1 (chord accompaniment), Track 2 (melody)
Recording Method:	Real-time
Memory Capacity:	Approximately 5,200 notes (two songs)

Other Functions

Tempo:	Variable (226 steps, ♩ = 30 to 255)
Transpose:	25 steps (-12 semitones to +12 semitones)
Tuning:	101 steps (A4 = approximately 440Hz ±50Cents)

Card

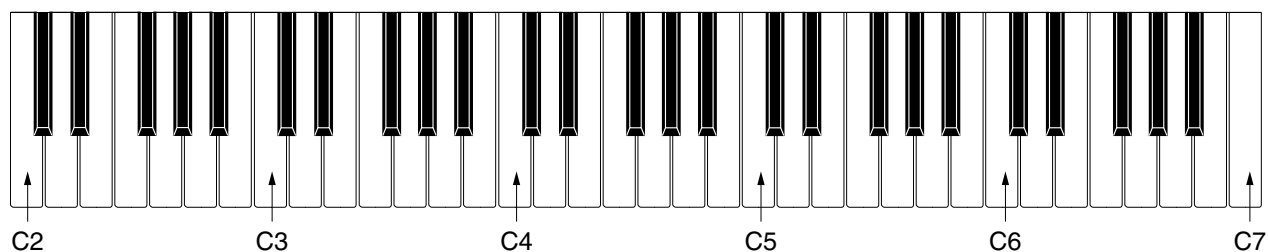
Supported Memory Cards:	SD memory cards, optional CASIO song data cards* * May not be available in some geographic areas.
Supported SD Cards:	1 GB or less (Cards with capacity greater than 1 GB are not supported.)
Maximum Number of Importable Songs:	Up to 1,000
Supported Data:	SMF Format 0, CASIO Original Format CM2

CIRCUIT DESCRIPTION

KEY MATRIX

	KC0	KC1	KC2	KC3	KC4	KC5	KC6	KC7-
FI0	C2 (1)	C#2(1)	D2 (1)	D#2 (1)	E2 (1)	F2 (1)	F#2 (1)	G2 (1)
SI0	C2 (2)	C#2 (2)	D2 (2)	D#2 (2)	E2 (2)	F2 (2)	F#2 (2)	G2 (2)
FI1	G#2 (1)	A2 (1)	A#2 (1)	B2 (1)	C3 (1)	C#3 (1)	D3 (1)	D#3 (1)
SI1	G#2 (2)	A2 (2)	A#2 (2)	B2 (2)	C3 (2)	C#3 (2)	D3 (2)	D#3 (2)
FI2	E3 (1)	F3 (1)	F#3 (1)	G3 (1)	G#3 (1)	A3 (1)	A#3 (1)	B3 (1)
SI2	E3 (2)	F3 (2)	F#3 (2)	G3 (2)	G#3 (2)	A3 (2)	A#3 (2)	B3 (2)
FI3	C4 (1)	C#4 (1)	D4 (1)	D#4 (1)	E4 (1)	F4 (1)	F#4 (1)	G4 (1)
SI3	C4 (2)	C#4 (2)	D4 (2)	D#4 (2)	E4 (2)	F4 (2)	F#4 (2)	G4 (2)
FI4	G#4 (1)	A4 (1)	A#4 (1)	B4 (1)	C5 (1)	C#5 (1)	D5 (1)	D#5 (1)
SI4	G#4 (2)	A4 (2)	A#4 (2)	B4 (2)	C5 (2)	C#5 (2)	D5 (2)	D#5 (2)
FI5	E5 (1)	F5 (1)	F#5 (1)	G5 (1)	G#5 (1)	A5 (1)	A#5 (1)	B5 (1)
SI5	E5 (2)	F5 (2)	F#5 (2)	G5 (2)	G#5 (2)	A5 (2)	A#5 (2)	B5 (2)
FI6	C6 (1)	C#6 (1)	D6 (1)	D#6 (1)	E6 (1)	F6 (1)	F#6 (1)	G6 (1)
SI6	C6 (2)	C#6 (2)	D6 (2)	D#6 (2)	E6 (2)	F6 (2)	F#6 (2)	G6 (2)
FI7	G#6 (1)	A6 (1)	A#6 (1)	B6 (1)	C7 (1)			
SI7	G#6 (2)	A6 (2)	A#6 (2)	B6 (2)	C7 (2)			

NOMENCLATURE OF KEYS

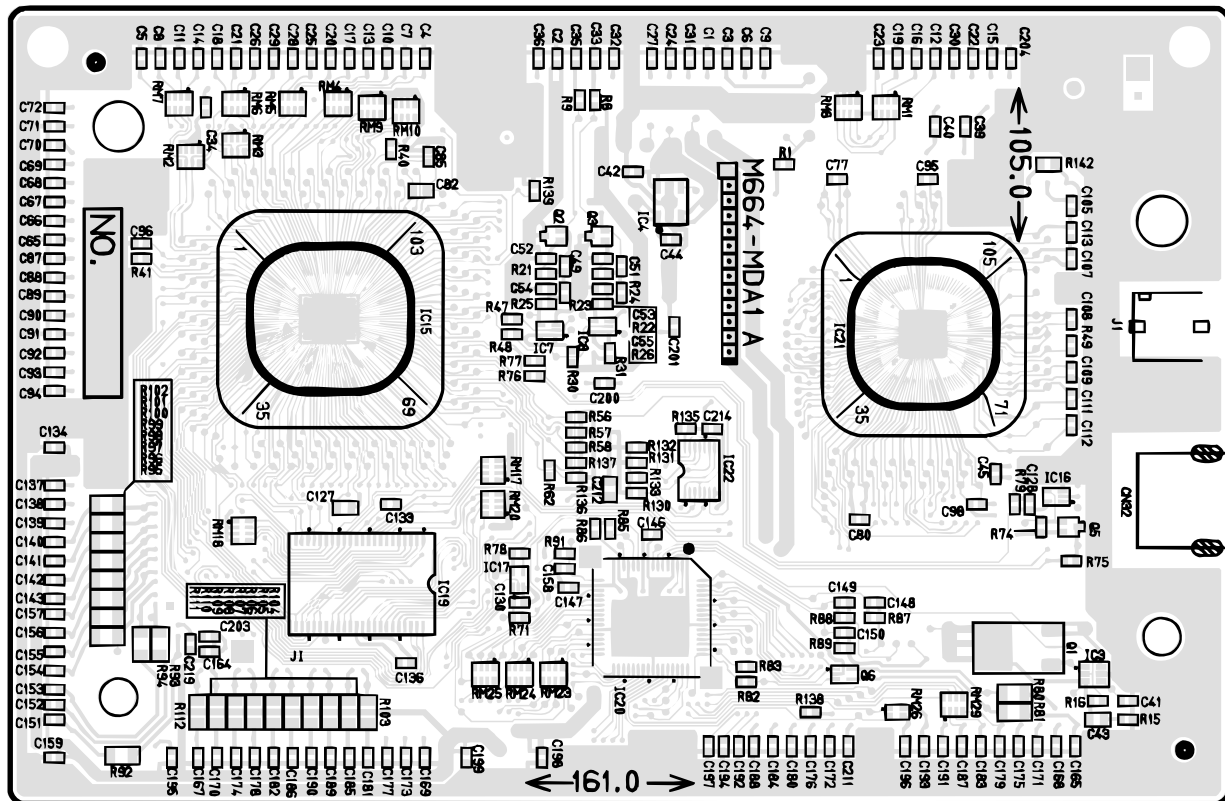
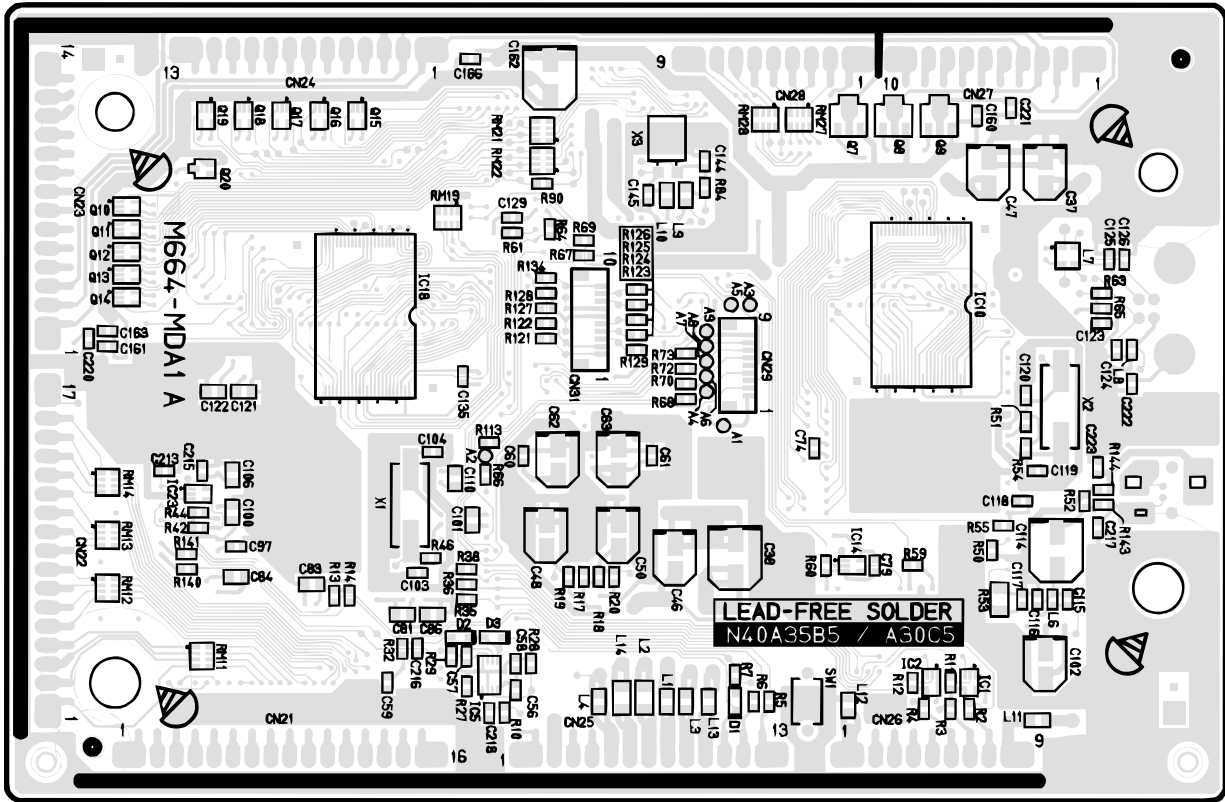


BUTTON MATRIX

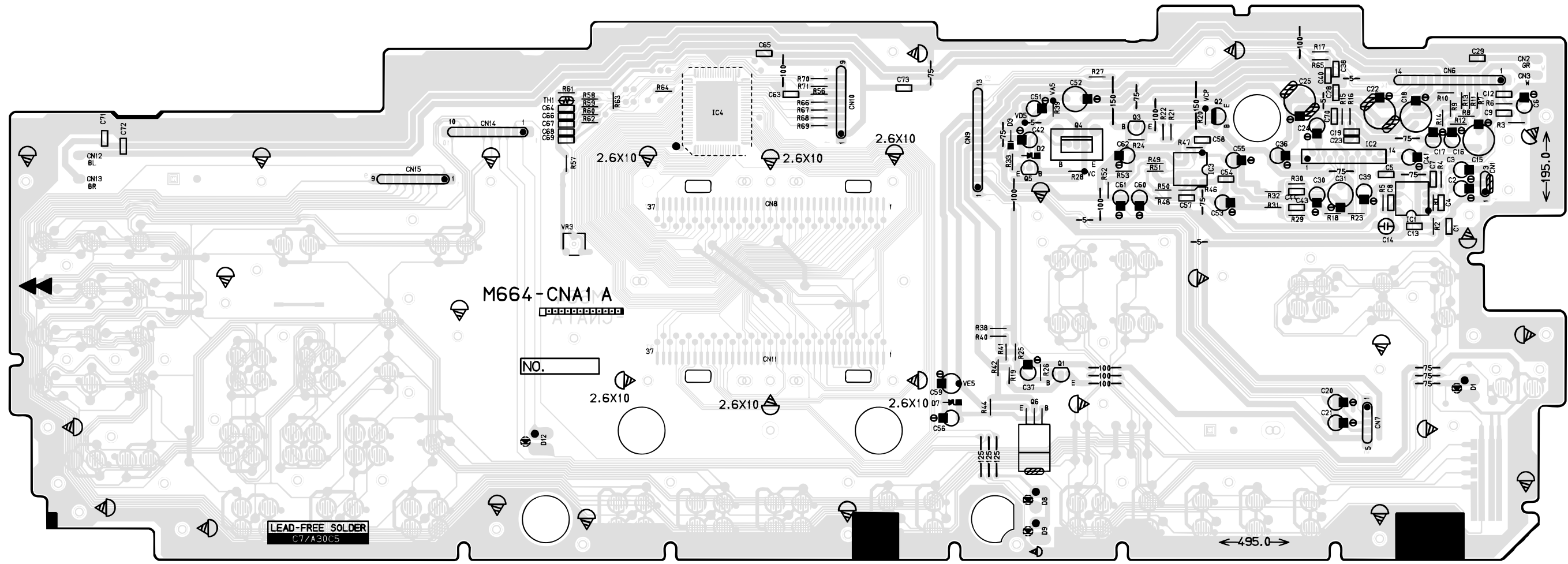
	SWI0	SWI1	SWI2	SWI3	SWI4	SWI5	SWI6	SWI7
SWO0	SCORING1	STEP2	3	TONE	5	PLAY/ STOP	SONG MEMORY	SYNCRO/ FILL-IN
SWO1	PRACTICE PHRASE	STEP3	0	7	6	KEY DOWN	KEY UP	KARAOKE
SWO2	STEP1	-	+	4	8	SYNCRO/ FILL-IN		
SWO3	SCORING2	SPEAK	SCORING3	METRONOME	INTRO	START/ STOP	SETTING	
SWO4	LAYER	SPRIT	2	RHYTHM	9	REVERB/ CHORUS	KEY LIGHT	
SWO5	RIGHT/ TRACK2	LEFT/ TRACK1	1	SONG BANK	PIANO BANK	LEFT	RIGHT	

PRINTED CIRCUIT BOARDS

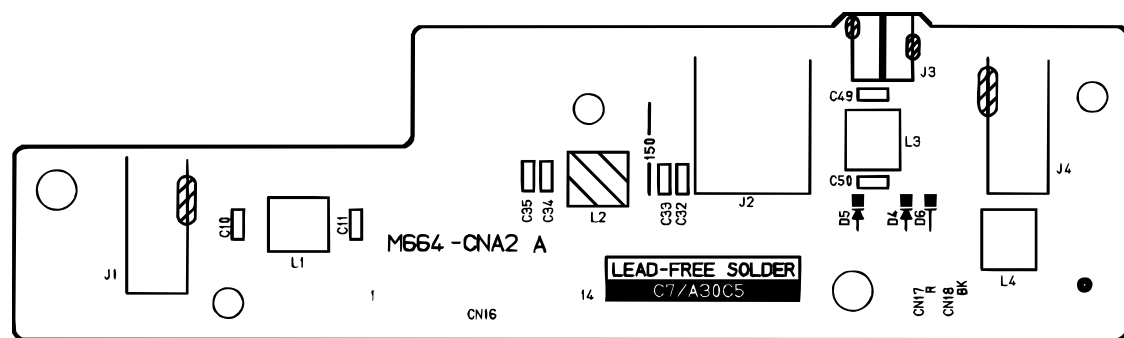
Main PCB M664-MDA1



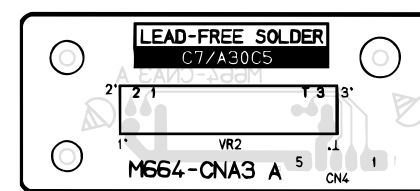
CONSOLE PCB M664-CNA1



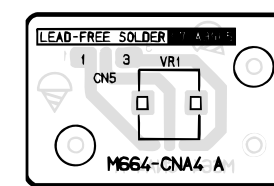
CONSOLE PCB M664-CNA2



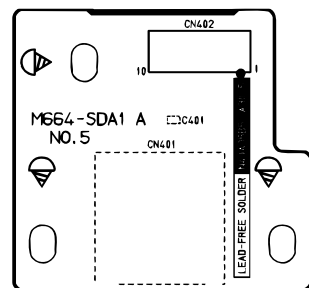
CONSOLE PCB M664-CNA3



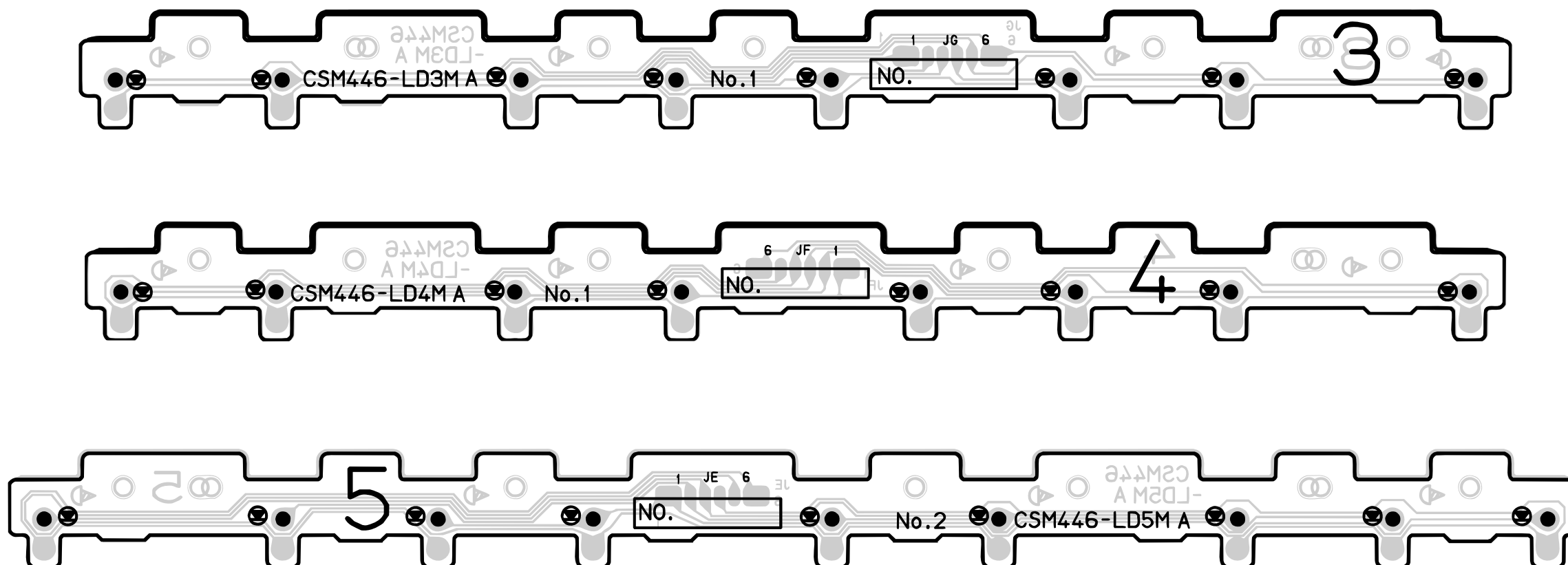
CONSOLE PCB M664-CNA4



SUB PCBs M664-SDA1



LED PCBs CSM446-LD3M/LD4M/LD5M



DIAGNOSTIC PROGRAM

■ Initial Setup

1. Connect the AC adaptor.
2. Connect a Sustain pedal.
3. Setting SD card into slot.
3. "MODE" switch: NORMAL
4. "MAIN VOLUME": MAX
5. "MIC VOLUME": MIN

NOTE: If there is no Sustain pedal, Sustain pedal check can be skipped.

■ How to start diagnostic program

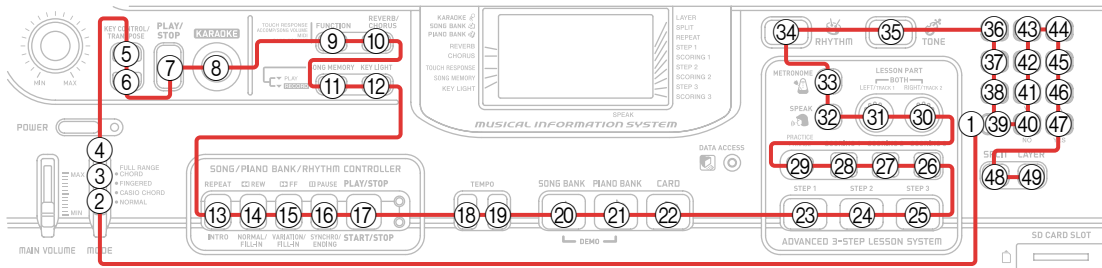
1. Press and hold the "0" and "9" buttons.
2. Press the "POWER" button.
3. The message "TST" is appears on LCD.
4. Release the "0" and "9" buttons.

■ Diagnostic program

1. SWITCH check

- ① Press "0" button.
* Wait for confirmation sound.
- ② Slide switches or press buttons in the order from No.01 to No.49.
* Confirmation sound sounds.
* The Button number appears on the LCD.
* A buzzer sounds if buttons are pressed in a wrong order, and "NG" appears on LCD.
NOTE: The button numbers are written in hexadecimal numerals.
- ③ Press the "LAYER" button the last.
* Wait for confirmation sound.
* The message "COK" is appears on LCD.

NOTE: This check cannot be aborted in mid-course.



Message on LCD

2. AC adaptor check

- ① Press "-" button.

JOK

3. Pedal check

- ① Press "1" button.
- ② "Sustain pedal": ON
- ③ "Sustain pedal": OFF

TCH
SUS

4. ROM check

- ① Press "2" button.
* Confirmation sound sounds.

OOK

5. MODEL check

- ① Press "3" button.

664

	Message on LCD
6. ROM Ver. check	
① Press “3” button. (internal ROM)	200
② Press “3” button. (external ROM)	200
7. RAM check	
① Press “+” button. * Confirmation sound sounds.	AOK
8. D/A check	
① Press the “4” button. * When standing in the center, the tester hears the minimum test sound in an equal volume from both right and left speakers.	MIN
② Press the “5” button. * When standing in the center, the tester hears the medium test sound in an equal volume from both right and left speakers.	MID
③ Press the “6” button. * When standing in the center, the tester hears the maximum test sound in an equal volume from both right and left speakers.	MAX
④ Press the “7” button. * When standing in the center, the tester hears the maximum test sound from the left speaker.	L
⑤ Press the “8” button. * When standing in the center, the tester hears the maximum test sound from the right speaker.	R
9. SD check	
① Press the “CARD” button. * Confirmation sound sounds. NOTE: If “CARD” button at lock mode, “PT UER” is appears on LCD.	UOK
10. LCD check	
① Press the “STEP1” button. * All dots and characters of LCD turn on. * There is no lack of the dot and the character.	
11. KEY LED check	
① Press “SCORING1” button. * The key lights with confirmation sound in the following order. * There must not be remarkable difference in the LED brightness of the adjacent key.	
1) C1, D1, E1, F1, G1, A1, B1	6) C1#, D1#, E1#, F1#, G1#, A1#
2) C2, D2, E2, F2, G2, A2, B2	7) C2#, D2#, E2#, F2#, G2#, A2#
3) C3, D3, E3, F3, G3, A3, B3	8) C3#, D3#, E3#, F3#, G3#, A3#
4) C4, D4, E4, F4, G4, A4, B4	9) C4#, D4#, E4#, F4#, G4#, A4#
5) C5, D5, E5, F5, G5, A5, B5, C6	10) C5#, D5#, E5#, F5#, G5#, A5#
11. Console LED check	
① Press the “SPEAK” button. * Keyboard LED must light in the undermentioned order.	
1) DATA ACCESS	
2) SONG CONTROLLER	
3) RHYTHM CONTROLLER	

Message on LCD

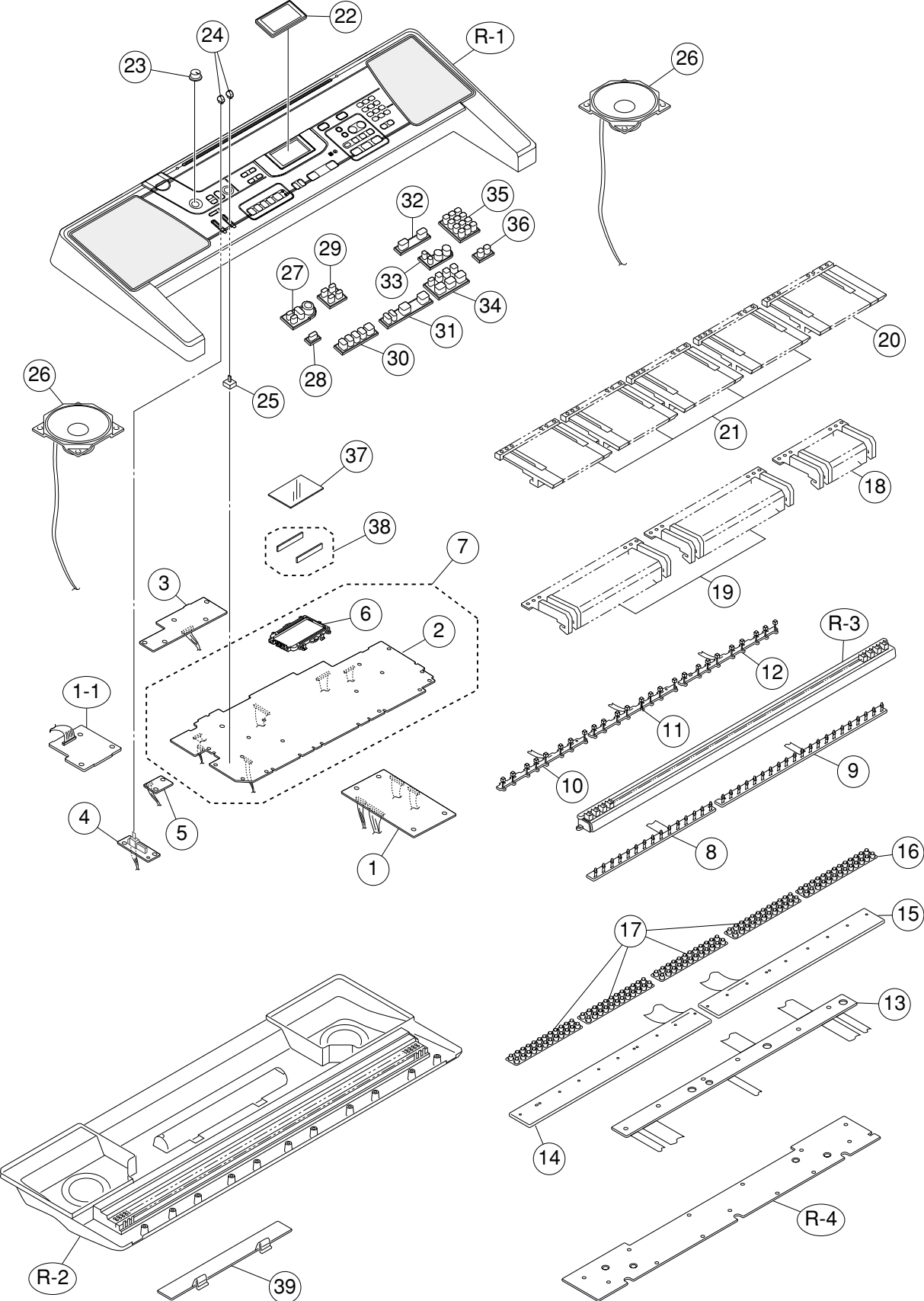
12. APO check

- ① Press the “PRACTICE PHRASE” button.
 - * Go out from TEST mode (Power off).
 - * The LCD turns off.
 - * Disconnect an AC adaptor.
 - * Disconnect the SD card from slot.
 - * Press the “POWER” button 3 times

To discharge

DIAGNOSTIC PROGRAM IS FINISHED.

EXPLODED VIEW



PARTS LIST

LK-300TV

Notes: This parts list does not include the cosmetic parts, which parts are marked with item No. "R-X" in the exploded view.

Contact our spare parts department if you need these parts for refurbish.

1. Prices and specifications are subject to change without prior notice.
2. As for spare parts order and supply, refer to the "GUIDEBOOK for Spare parts Supply", published seperately.
3. The numbers in item column correspond to the same numbers in drawing.

N	Item	Parts Code	Parts Name	Specification	QTY	Price Code	R	Remarks
Main PCB								
N	1	10243438	PCB ASSY/MAIN	TK-RJM506904*001	1	DI	A	NTSC
N	1	10243444	PCB ASSY/MAIN	TK-RJM506904*002	1	DI	A	PAL
	D1,2,3	23901820	DIODE	1SS355TE-17	3	AD	X	
	IC7,8	10116986	I.C	SN74AHCT1G08DCKR	2	AA	C	
N	IC22	10240648	IC	TC74LCX08FT(EL.K)	1	AH	C	
	IC14	10197553	IC	TC7S04FU(TE85L.F)	1	AE	C	
	IC17	10197554	IC	TC7SZ126FU(TE85L.F)	1	AE	C	
	IC16,23	10197555	IC	TC7SZ14FU(TE85L.F)	2	AE	C	
	IC5	10197809	IC	TC7WH123FU(TE12L.F)	1	BO	C	
	IC21	10187219	LSI	SPG200A-C	1	AJ	C	
N	IC19	10184585	LSI	CY62146DV30LL55ZS	1	CG	C	
	L6	10171010	COIL	LQM18NN1R8K00D	1	AC	X	
	Q5	10153685	FET	2SJ346(TE85L.F)	1	AA	X	
	Q1	10015566	TRANSISTOR	2SB1181TLR	1	AC	C	
	Q2,3,20	10202670	TRANSISTOR	KTA2014-GR-RTK/P	3	AA	C	
	Q6,Q10-13	10209018	TRANSISTOR	KTA501U-GR-RTK/P	5	AC	C	
	X3	10096483	CERAMIC OSCILLATOR	CSBFB1M00J58-R1	1	AG	C	
N	X2	10240828	RESONATOR	SSL6000000F16F5FZ8	1	AA	C	
	X1	10211946	RESONATOR	SSM1200000F17F5FZ8	1	AC	C	
	L7	10158809	COIL	DLP31SN221SL2L	1	AI	X	
	J1	10171003	CONNECTOR	JY-3545B*01-130	1	AF	X	
Console unit								
N	1-1	10243446	PCB ASSY/SDA1	TK-RJM506910*001	1	AA	C	
Console unit								
N	2	10243435	PCB ASSY/CNA1	TK-RJM506895*001	1	BV	C	
	IC2	10190010	IC	LA4598-E	1	AG	C	
	IC1,3	10206677	IC	NJM2068D-D	2	AA	C	
N	Q4	10206835	TRANSISTOR	KTA1046-Y-U/P	1	AA	C	
	Q6	10206676	TRANSISTOR	KTC2026-Y-U/P	1	AH	C	
	VR3	69304870	SEMI FIXED VOL	EVND8AA03B53	1	AA	X	
	D3	10079928	DIODE	1SS133TA	1	AA	X	
	D2	10079931	DIODE	DZ5.1BSCTA	1	AA	X	
	D7	10085189	ZENER DIODE	DZ5.6BSBTA	1	AA	X	
N	D9	10206836	LED	1154HD-B5/5.5-90	1	AA	X	
	D8	10106131	LED	1154HD-B5/6-90	1	AA	X	
	D12	10116453	LED	1154HD-B5/6.5-90	1	AB	X	
	D1	10107268	LED	1154HD-B5/7-90	1	AA	X	
N	Q2	10206675	TRANSISTOR	KTA1273-Y-AT/P	1	AB	C	
	Q1,3,5	10206673	TRANSISTOR	KTC3199-GR-AT/P	3	AA	C	
N	3	10243445	PCB ASSY/CNA2	TK-RJM506907*001	1	AW	C	
	J3	10088189	DC JACK	DS-240A2-383V4H	1	AA	C	DC JACK
	J4	10206815	CONNECTOR	JY-6314*01-030	1	AA	X	
	J1	10206816	CONNECTOR	JY-6314*01-130	1	AE	X	
	J2	10213695	JACK	JY-6316*01-070	1	AY	C	PHONE JACK
N	L2	10231919	COIL	RB53-856396NP	1	AA	X	
N	L1,3,4	10231920	COIL	RB53-856397NP	3	AA	X	
N	4	10243436	PCB ASSY/CNA3	TK-RJM506898*001	1	AR	C	
	VR2	27652213	VARIABLE R	RS20H121-2KB	1	AS	X	
N	5	10243437	PCB ASSY/CNA4	TK-RJM506901*001	1	AQ	C	
	VR1	10122622	VARIABLE R	RK09D1130C49	1	AE	X	
	6	10197541	REFLECTOR	RJM505356-001V01	1	AA	C	
N	7	10243431	BL ASSY	TK-RJM505339*002	1	BT	C	

Notes : Q - Quantity per unit

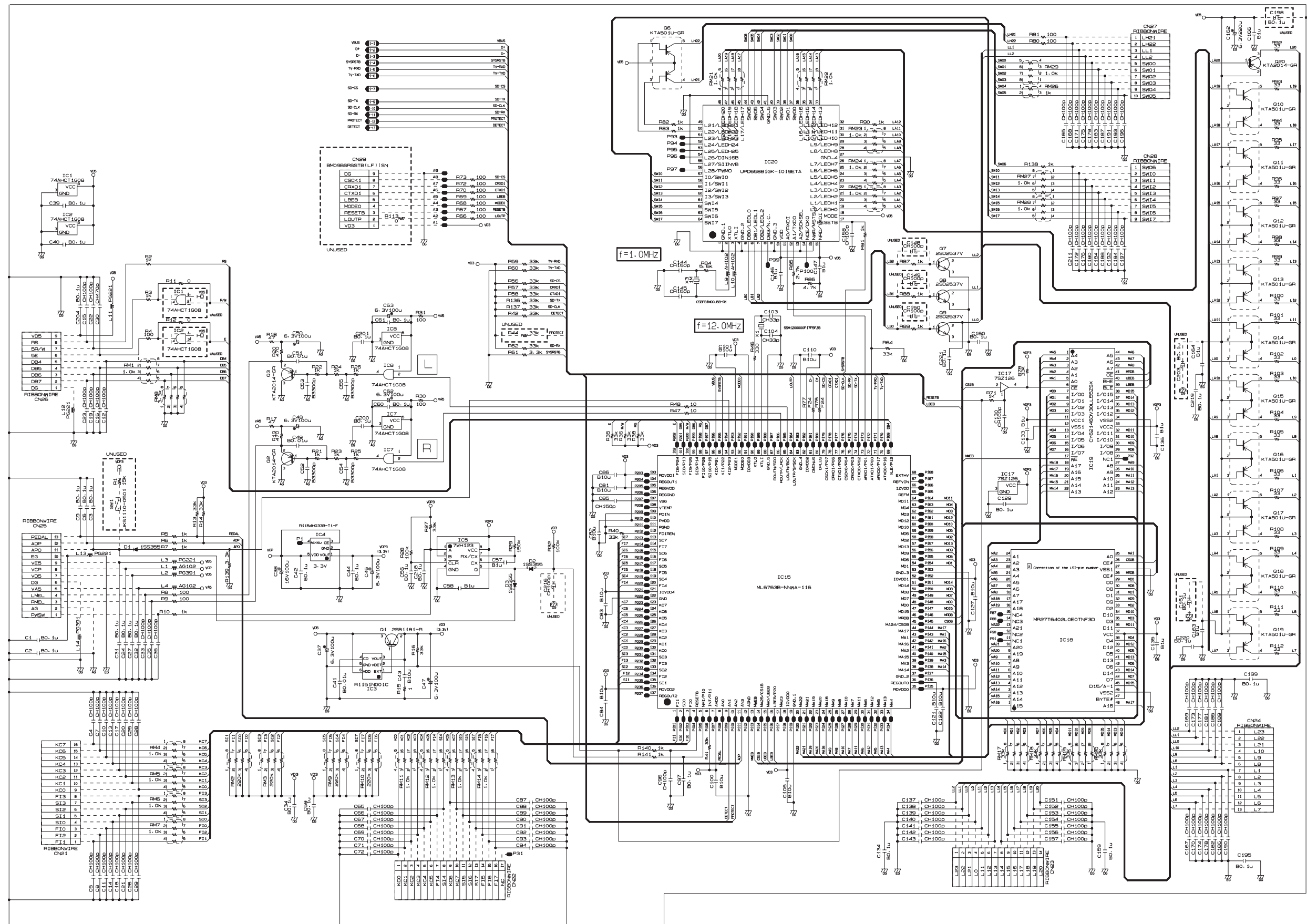
R - Rank

N	Item	Parts Code	Parts Name	Specification	QTY	Price Code	R	Remarks	
Key board assy									
N N	8	10200656	PCB ASSY/LDA1	TK-RJM505754*001	1	BU	C		
	D501-515	23701408	LED	SLI-332URCTJ2	15	AA	C		
	9	10200657	PCB ASSY/LDB2	TK-RJM505756*001	1	BJ	C		
	D516-536	23701408	LED	SLI-332URCTJ2	21	AA	C		
	10	10037820	PCB ASSY/LD3M	TK-M240428*6(M476)	1	AS	C		
	11	10037819	PCB ASSY/LD4M	TK-M240429*6(M476)	1	AS	C		
	12	10037818	PCB ASSY/LD5M	TK-M240430*6(M476)	1	AT	C		
	13	10135908	PCB ASSY/LDA	TK-RJM503255*001	1	AR	C		
	14	10243426	PCB ASSY/KY1M	TK-M140687*013	1	AX	C		
	15	10243427	PCB ASSY/KY2M	TK-M140688*014	1	AW	C		
	16	69222772	RUBBER/CONTACT/CS	M211705B-1	1	AD	B		
	17	69222762	RUBBER/CONTACT/CB	M211704B-1	4	AF	B		
	18	10008322	KEY SET/5P BLACK	M140369C-2	1	AM	C		
	19	10079624	KEY SET/10P BLACK	M140369D-1	2	BN	C		
	20	10014609	KEY SET/WHITE/CS	M340489A*4	1	AV	C		
	21	10014608	KEY SET/WHITE/CB	M340489A*3	4	AU	C		
	Case unit								
	N	22	10240808	PLATE/DISPLAY	RJM505352-002V01	1	AA	C	
	N	23	10240831	KNOB/ROTARY	RJM502503-001V02	1	AC	C	
	N	24	10240416	KNOB/SLIDE	RJM503803-004V01	2	AE	C	
		25	69270510	CONTACT/SLIDE	CSB-08D	1	AA	C	
N	26	10228225	SPEAKER	C12JA17	2	AA	C		
N	27	10240832	RUBBER/KEY/A	RJM505342-002V01	1	AE	C		
N	28	10240834	RUBBER/KEY/B	RJM505343-002V01	1	AB	C		
N	29	10240835	RUBBER/KEY/C	RJM505344-002V01	1	AD	C		
N	30	10240836	RUBBER/KEY/D	RJM505345-002V01	1	AC	C		
N	31	10240833	RUBBER/KEY/A	RJM506545-001V01	1	AA	C		
N	32	10240837	RUBBER/KEY/F	RJM505347-002V01	1	AC	C		
N	33	10240838	RUBBER/KEY/G	RJM505348-002V01	1	AF	C		
N	34	10240839	RUBBER/KEY/H	RJM505349-002V01	1	AE	C		
N	35	10240840	RUBBER/KEY/J	RJM505350-002V01	1	AA	C		
N	36	10240841	RUBBER/KEY/K	RJM505351-002V01	1	AA	C		
	37	10171015	LCD	TR3690N	1	AU	C		
	38	10197537	CONNECTOR	RJM505353-001V01	1	AF	C		
	39	10200658	COVER/BATTERY	TK-M341235*008	1	DB	B		
Accessory									
N	-	10240825	LABEL/RATING	M341007-059V01	1	AA	X	NTSC	
N	-	10240826	LABEL/RATING	M341007-061V01	1	AG	X	PAL	
	-	10055632	BATTERY	GP13A0-9S2	3	BH	C	Except US	
	-	10131421	MIC	DM-302-2	1	BJ	C		
	-	10171020	VIDEO CABLE	CA-8101-300-A08	1	AQ	C		
N	-	10236617	CD ROM	USB12CDROMWL1C	1	AA	C		
	-	10118186	STAND/SCORE	M311760-001V02	1	AK	C		
Refurbish									
N	R-1	10243432	CASE ASSY/UPPER	TK-RJM506553*001	1	CF	C		
	R-2	10200661	CASE ASSY/MIDDLE	TK-M141274*016	1	CD	C		
	R-3	10200662	CASE ASSY/FK	TK-M341357*007	1	AA	C		
	R-4	69069252	PLATE/LOWER	M240573B-2	1	AF	C		

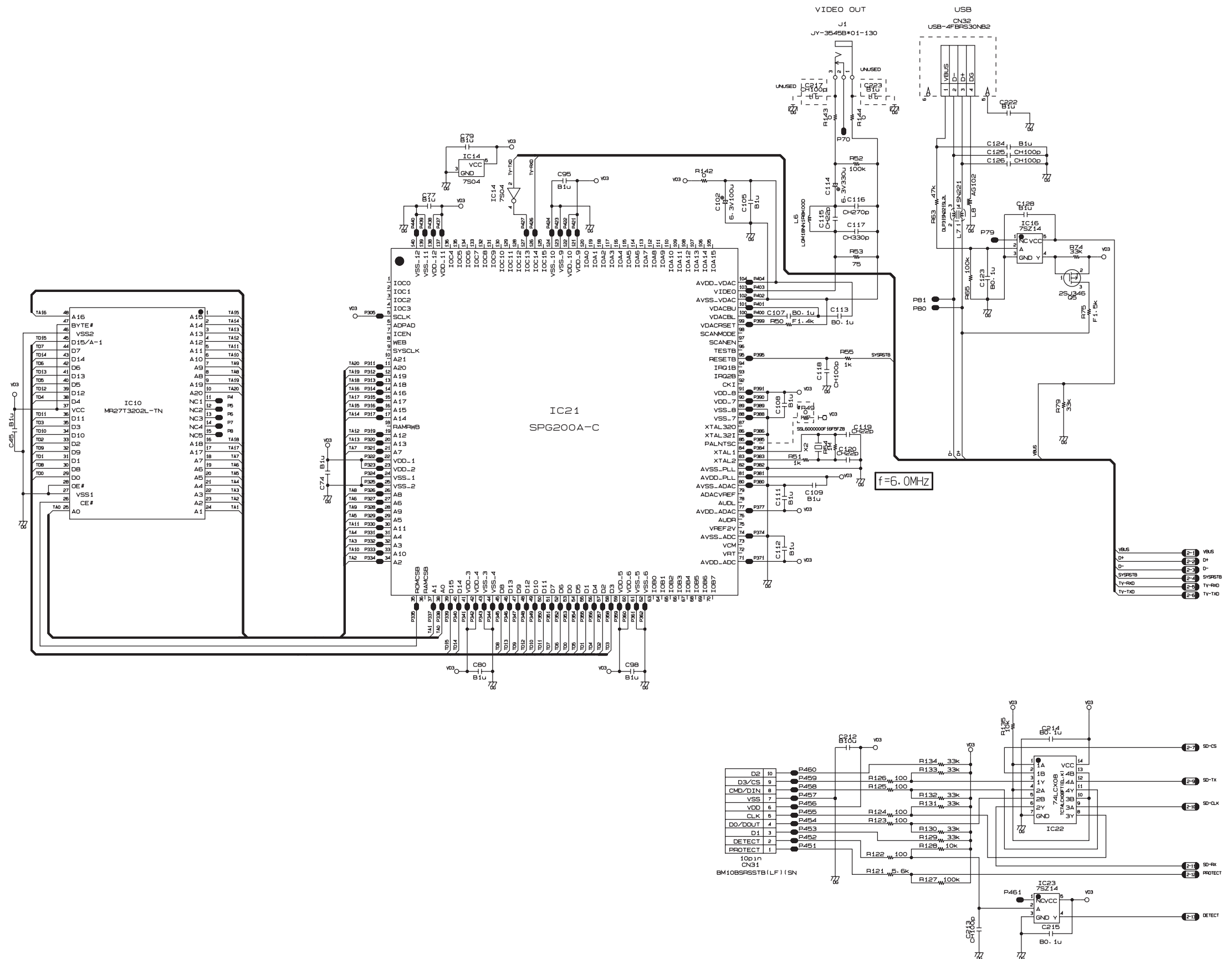
Notes : Q - Quantity per unit
R - Rank

SCHEMATIC DIAGRAMS

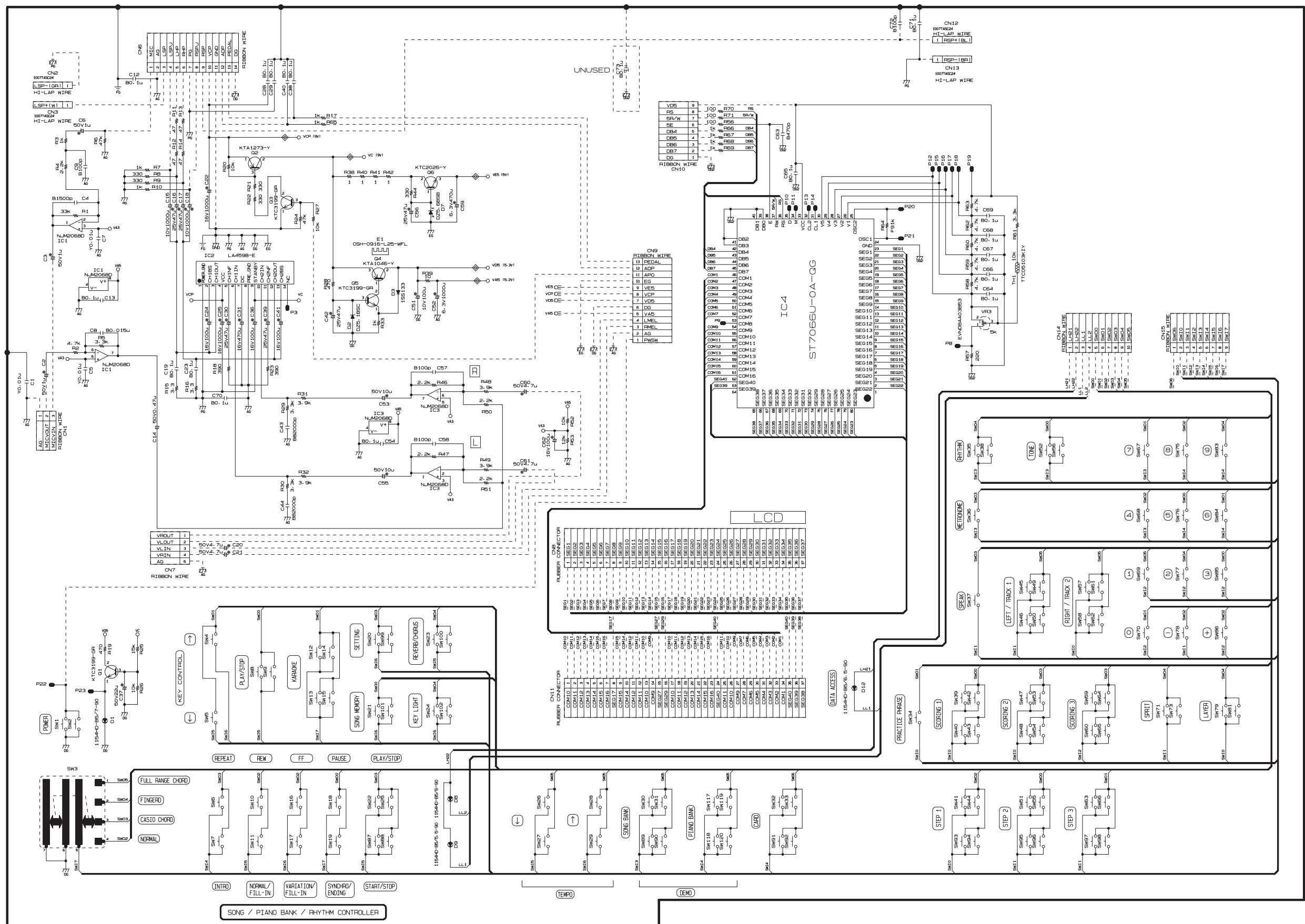
MAIN PCB M664-MDA1(1/2)



MAIN PCB M664-MDA1(2/2)

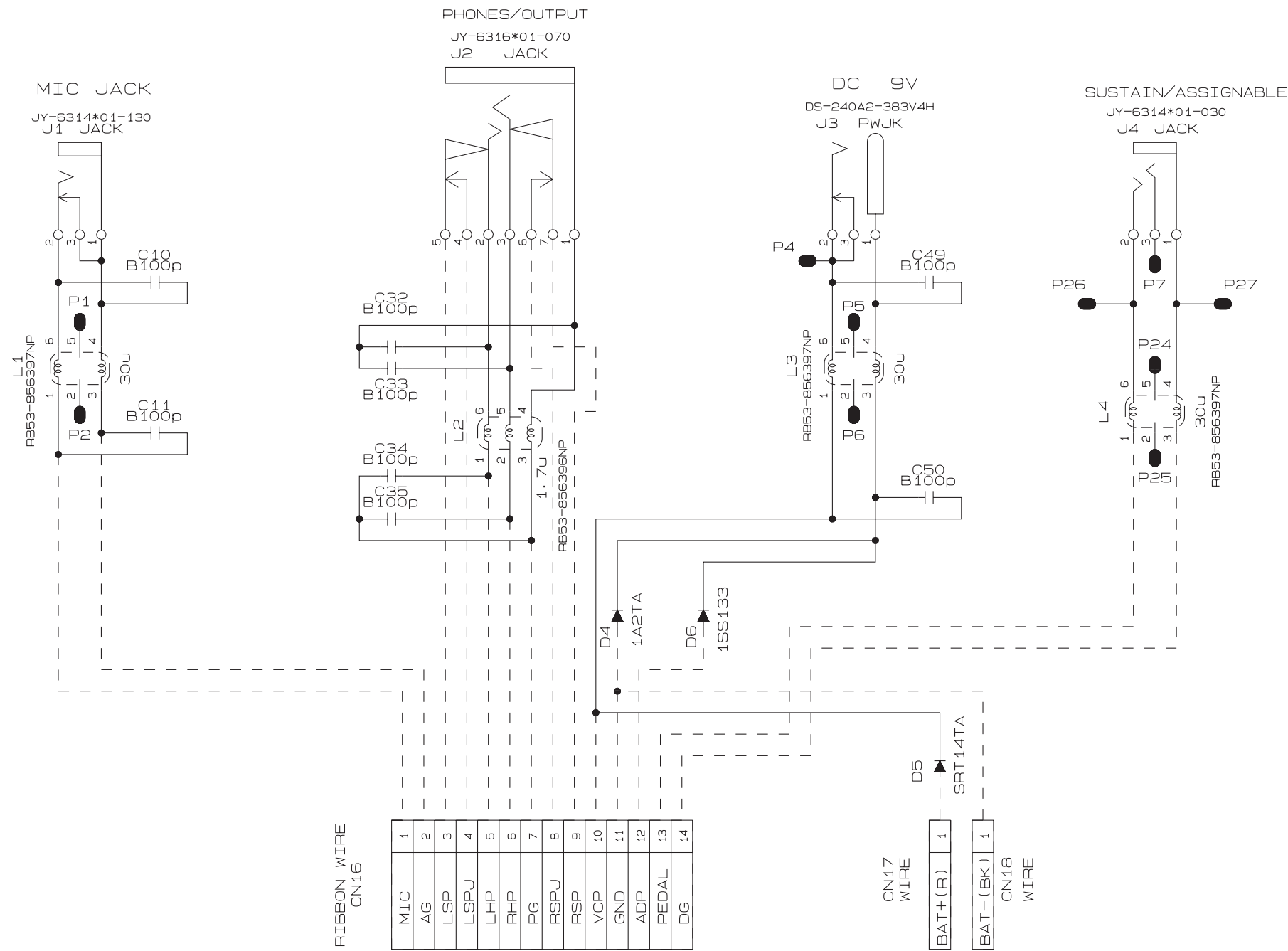


CONSOLE PCB M664-CNA1

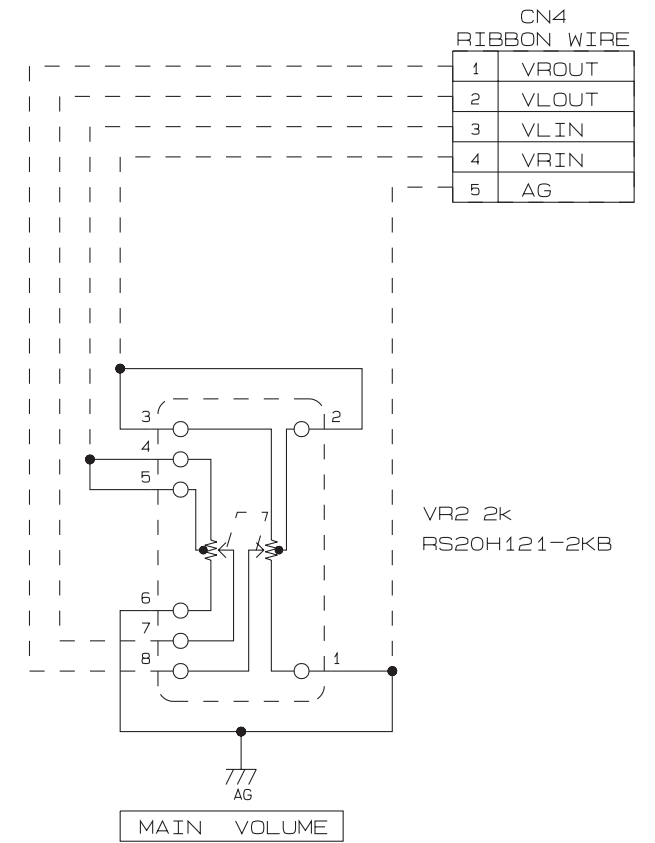


CONSOLE PCBs M664-CNA2/CNA3/CNA4

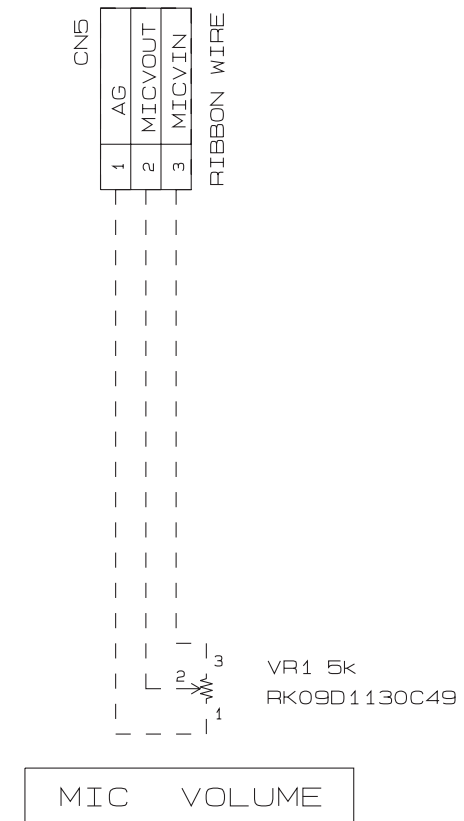
M664-CNA2



M664-CNA3

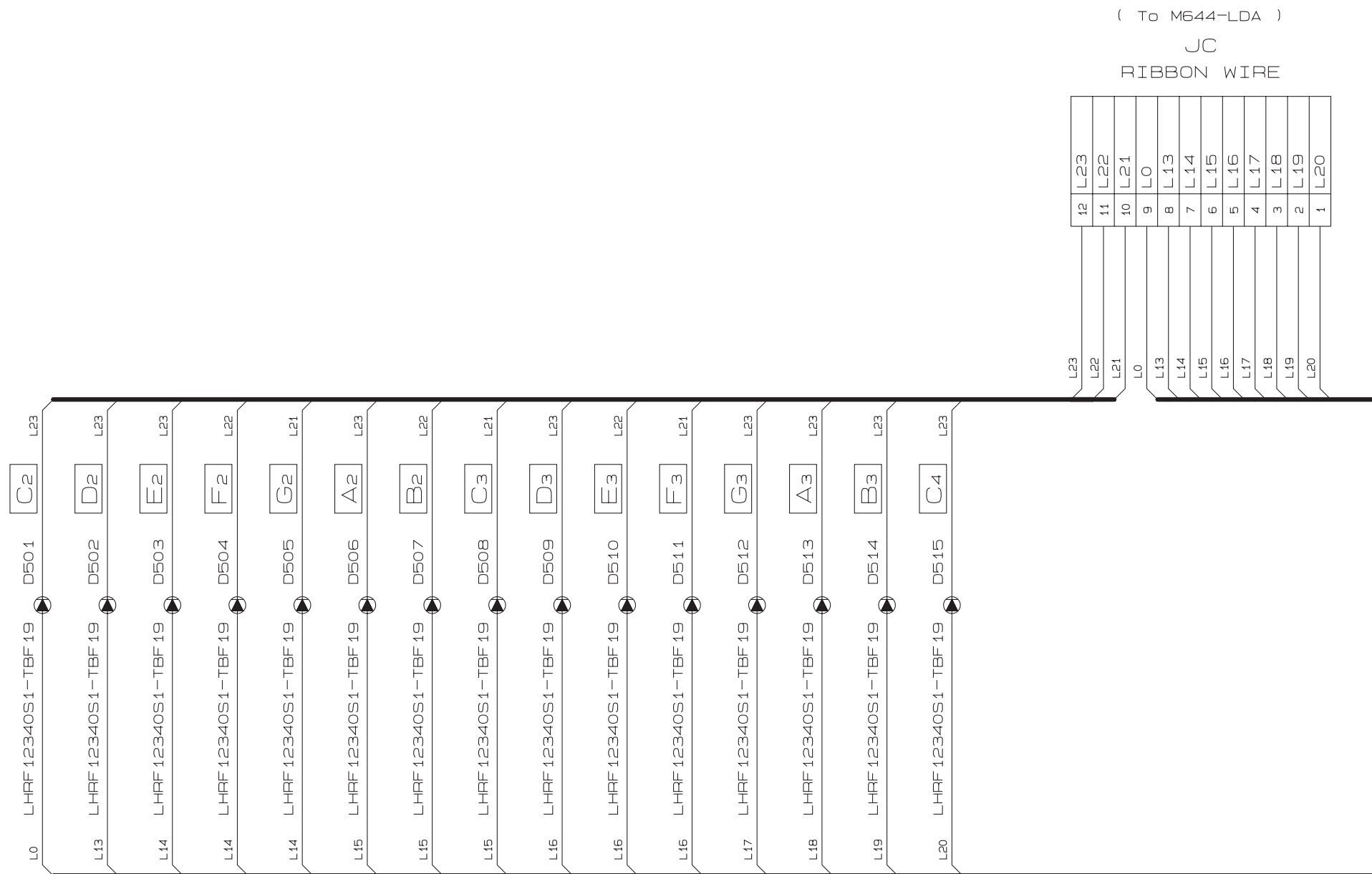


M664-CNA4



KEY LED PCB M655-LDA1

NOTE
H= 14.5mm



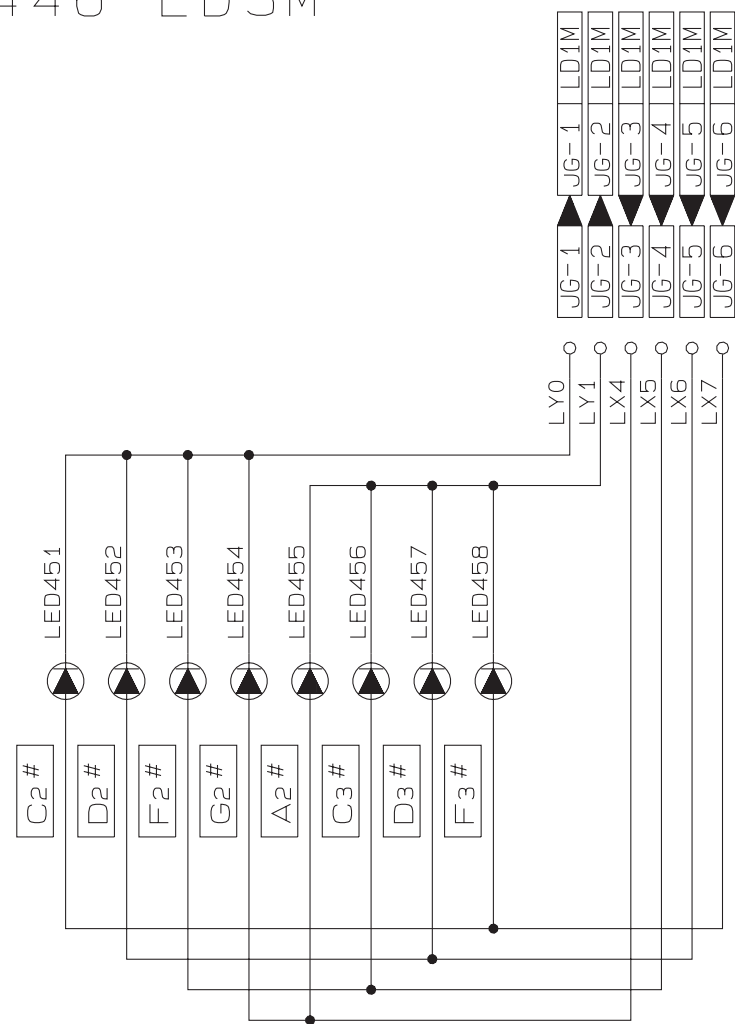
KEY LED PCB M655-LDB2

NOTE
H = 14.5mm



KEY LED PCBs M446-LD3M/LD4M/LD5M

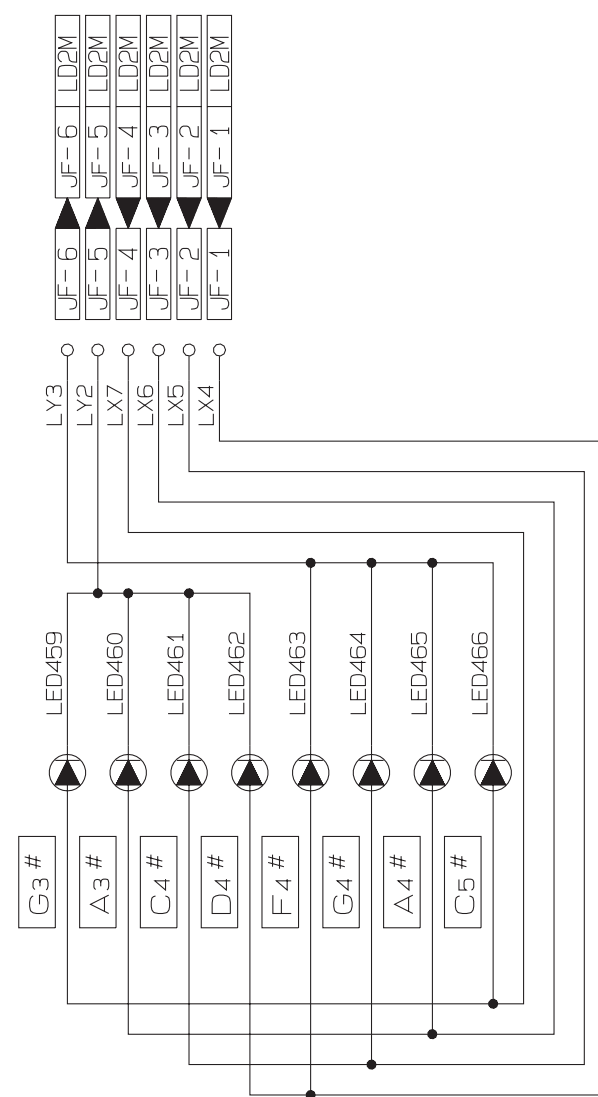
CSM446-LD3M



NOTE

⬆️: KR3302X-J345K

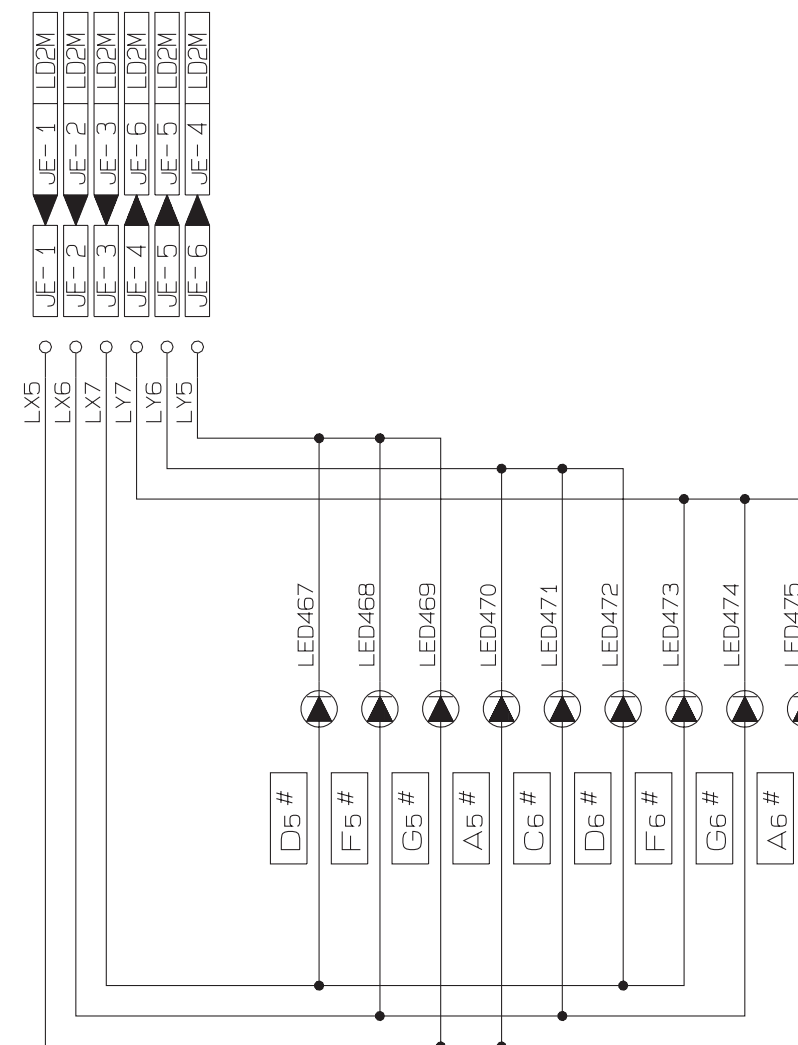
CSM446-LD4M



NOTE

⬆️: KR3302X-J345K

CSM446-LD5M



KEY PCBs CSM618T-KY1M/KY2M

NOTE

◀^{HT} ∅ 1S2473T-77-T
(1SS133T-77-T)

CSM618T-KY1M

JA
JOINER

1	FI1
2	FI2
3	FI0
4	S10
5	S11
6	S12
7	S13
8	FI3
9	KC0
10	KC1
11	KC2
12	KC3
13	KC4
14	KC5
15	KC6
16	KC7

KC0	D501	DI	SW501	C2	①	FI0
KC0	D502	DI	SW502	C2	①	S10
KC1	D503	DI	SW503	C2#	①	FI0
KC1	D504	DI	SW504	C2#	①	S10
KC2	D505	DI	SW505	D2	①	FI0
KC2	D506	DI	SW506	D2	①	S10
KC3	D507	DI	SW507	D2#	①	FI0
KC3	D508	DI	SW508	D2#	①	S10
KC4	D509	DI	SW509	E2	①	FI0
KC4	D510	DI	SW510	E2	①	S10
KC5	D511	DI	SW511	F2	①	FI0
KC5	D512	DI	SW512	F2	①	S10
KC6	D513	DI	SW513	F2#	①	FI0
KC6	D514	DI	SW514	F2#	①	S10
KC7	D515	DI	SW515	G2	①	FI0
KC7	D516	DI	SW516	G2	①	S10
KC0	D517	DI	SW517	G2#	①	FI1
KC0	D518	DI	SW518	G2#	①	S11
KC1	D519	DI	SW519	A2	①	FI1
KC1	D520	DI	SW520	A2	①	S11
KC2	D521	DI	SW521	A2#	①	FI1
KC2	D522	DI	SW522	A2#	①	S11
KC3	D523	DI	SW523	B2	①	FI1
KC3	D524	DI	SW524	B2	①	S11
KC4	D525	DI	SW525	C3	①	FI1
KC4	D526	DI	SW526	C3	①	S11
KC5	D527	DI	SW527	C3#	①	FI1
KC5	D528	DI	SW528	C3#	①	S11
KC6	D529	DI	SW529	D3	①	FI1
KC6	D530	DI	SW530	D3	①	S11
KC7	D531	DI	SW531	D3#	①	FI1
KC7	D532	DI	SW532	D3#	①	S11
KC0	D533	DI	SW533	E3	①	FI2
KC0	D534	DI	SW534	E3	①	S12
KC1	D535	DI	SW535	F3	①	FI2
KC1	D536	DI	SW536	F3	①	S12
KC2	D537	DI	SW537	F3#	①	FI2
KC2	D538	DI	SW538	F3#	①	S12
KC3	D539	DI	SW539	G3	①	FI2
KC3	D540	DI	SW540	G3	①	S12
KC4	D541	DI	SW541	G3#	①	FI2
KC4	D542	DI	SW542	G3#	①	S12
KC5	D543	DI	SW543	A3	①	FI2
KC5	D544	DI	SW544	A3	①	S12
KC6	D545	DI	SW545	A3#	①	FI2
KC6	D546	DI	SW546	A3#	①	S12
KC7	D547	DI	SW547	B3	①	FI2
KC7	D548	DI	SW548	B3	①	S12
KC0	D549	DI	SW549	C4	①	FI3
KC0	D550	DI	SW550	C4	①	S13
KC1	D551	DI	SW551	C4#	①	FI3
KC1	D552	DI	SW552	C4#	①	S13
KC2	D553	DI	SW553	D4	①	FI3
KC2	D554	DI	SW554	D4	①	S13
KC3	D555	DI	SW555	D4#	①	FI3
KC3	D556	DI	SW556	D4#	①	S13
KC4	D557	DI	SW557	E4	①	FI3
KC4	D558	DI	SW558	E4	①	S13
KC5	D559	DI	SW559	F4	①	FI3
KC5	D560	DI	SW560	F4	①	S13
KC6	D561	DI	SW561	F4#	①	FI3
KC6	D562	DI	SW562	F4#	①	S13
KC7	D563	DI	SW563	G4	①	FI3
KC7	D564	DI	SW564	G4	②	S13

C2
C2#
D2
D2#
E2
F2
F2#
G2
G2#
A2
A2#
B2
C3
C3#
D3
D3#
E3
F3
F3#
G3
G3#
A3
A3#
B3
C4
C4#
D4
D4#
E4
F4
F4#
G4

CSM618T-KY2M

JB
JOINER

1	KC0
2	KC1
3	KC2
4	KC3
5	KC4
6	KC5
7	FI4
8	S14
9	KC6
10	KC7
11	S15
12	S16
13	S17
14	FI5
15	FI6
16	FI7
17	NC

KC0	D565	DI	SW565	G4#	①	FI4
KC0	D566	DI	SW566	G4#	①	S14
KC1	D567	DI	SW567	A4	①	FI4
KC1	D568	DI	SW568	A4	①	S14
KC2	D569	DI	SW569	A4#	①	FI4
KC2	D570	DI	SW570	A4#	①	S14
KC3	D571	DI	SW571	B4	①	FI4
KC3	D572	DI	SW572	B4	①	S14
KC4	D573	DI	SW573	C5	①	FI4
KC4	D574	DI	SW574	C5	①	S14
KC5	D575	DI	SW575	C5#	①	FI4
KC5	D576	DI	SW576	C5#	①	S14
KC6	D577	DI	SW577	D5	①	FI4
KC6	D578	DI	SW578	D5	①	S14
KC7	D579	DI	SW579	D5#	①	FI4
KC7	D580	DI	SW580	D5#	①	S14
KC0	D581	DI	SW581	E5	①	FI5
KC0	D582	DI	SW582	E5	①	S15
KC1	D583	DI	SW583	F5	①	FI5
KC1	D584	DI	SW584	F5	①	S15
KC2	D585	DI	SW585	F5#	①	FI5
KC2	D586	DI	SW586	F5#	①	S15
KC3	D587	DI	SW587	G5	①	FI5
KC3	D588	DI	SW588	G5	①	S15
KC4	D589	DI	SW589	G5#	①	FI5
KC4	D590	DI	SW590	G5#	①	S15
KC5	D591	DI	SW591	A5	①	FI5
KC5	D592	DI	SW592	A5	①	S15
KC6	D593	DI	SW593	A5#	①	FI5
KC6	D594	DI	SW594	A5#	①	S15
KC7	D595	DI	SW595	B5	①	FI5
KC7	D596	DI	SW596	B5	①	S15
KC0	D597	DI	SW597	C6	①	FI6
KC0	D598	DI	SW598	C6	①	S16
KC1	D599	DI	SW599	C6#	①	FI6
KC1	D600	DI	SW600	C6#	①	S16
KC2	D601	DI	SW601	D6	①	FI6
KC2	D602	DI	SW602	D6	①	S16
KC3	D603	DI	SW603	D6#	①	FI6
KC3	D604	DI	SW604	D6#	①	S16
KC4	D605	DI	SW605	E6	①	FI6
KC4	D606	DI	SW606	E6	①	S16
KC5	D607	DI	SW607	F6	①	FI6
KC5	D608	DI	SW608	F6	①	S16
KC6	D609	DI	SW609	F6#	①	FI6
KC6	D610	DI	SW610	F6#	①	S16
KC7	D611	DI	SW611	G6	①	FI6
KC7	D612	DI	SW612	G6	①	S16
KC0	D613	DI	SW613	G6#	①	FI7
KC0	D614	DI	SW614	G6#	①	S17
KC1	D615	DI	SW615	A6	①	FI7
KC1	D616	DI	SW616	A6	①	S17
KC2	D617	DI	SW617	A6#	①	FI7
KC2	D618	DI	SW618	A6#	①	S17
KC3	D619	DI	SW619	B6	①	FI7
KC3	D620	DI	SW620	B6	①	S17
KC4	D621	DI	SW621	C7	①	FI7
KC4	D622	DI	SW622	C7	②	S17

G4#
A4
A4#
B4
C5
C5#
D5
D5#
E5
F5
F5#
G5
G5#
A5
A5#
B5
C6
C6#
D6
D6#
E6
F6
F6#
G6
G6#
A6
A6#
B6
C7

CASIO COMPUTER CO.,LTD.
Overseas Service Division

6-2, Hon-machi 1-Chome
Shibuya-ku, Tokyo 151-8543, Japan