

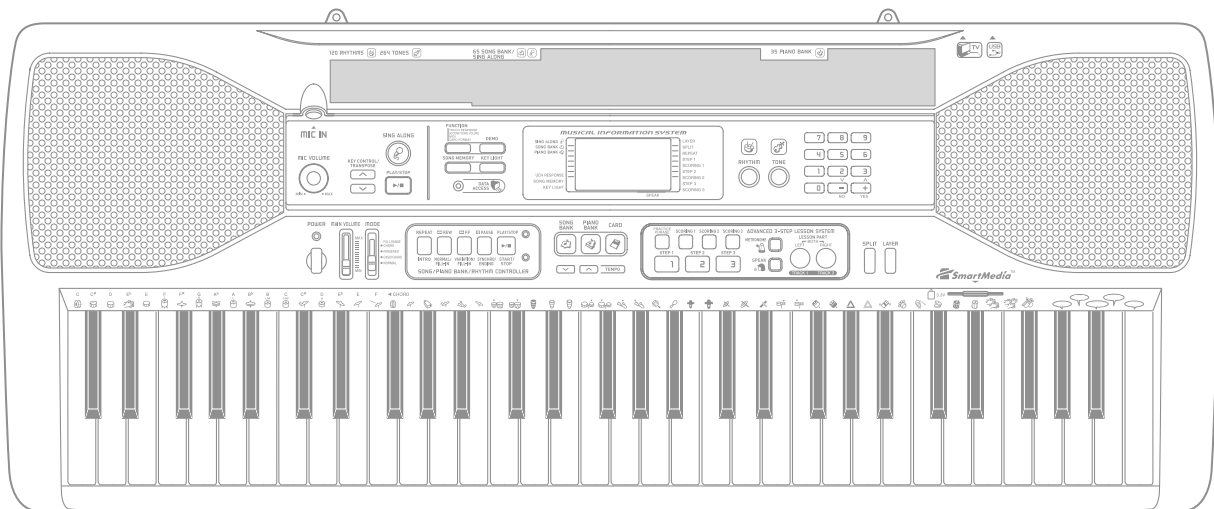
CASIO®

Service Manual

(without price)

LK-90TV

JUN. 2004



LK-90TV

ELECTRONIC KEYBOARD

Ver.1 : Jun. 2005

CONTENTS

Specifications	1
Block Diagram	3
Circuit Description	4
Printed Circuit Board	6
Disassembly	13
Diagnostic Program	19
Schematic Diagrams	22
Exploded View	31
Parts List	32

SPECIFICATIONS

GENERAL

Model:	LK-90TV/LK-92TV
Keyboard:	61 standard-size keys, 5 octaves (with touch response; 1, 2, off)
Key Light System:	Can be turned on and off (up to 10 keys can be lit at the same time)
Tones:	264 (128 panel tones + 128 General MIDI tones + 8 drum sets); with layer and split
Rhythm Instrument Tones:	61
Polyphony:	32 notes maximum (16 for certain tones)
Auto Accompaniment	
Rhythm Patterns:	120
Tempo:	Variable (226 steps, ♩ = 30 to 255)
Chords:	3 fingering methods (CASIO CHORD, FINGERED, FULL RANGE CHORD)
Rhythm Controller:	START/STOP, INTRO, NORMAL/FILL-IN, VARIATION/FILL-IN, SYNCHRO/ENDING
Accomp Volume:	0 to 127 (128 steps)
<Advanced 3-Step Lesson System>	
3-step Lesson:	3 lessons (Step 1, 2, 3)
Playback:	Repeat play of a single tune
Evaluation Mode:	Scoring 1, Scoring 2, Scoring 3, Phrase Practice
Voice Fingering Guide:	On/Off
Song Bank, Piano Bank	
Number of Tunes:	100 (Song Bank/Sing Along: 65, Piano Bank: 35)
Controllers:	PLAY/STOP, PAUSE, FF, REW, LEFT/RIGHT, REPEAT
User Songs:	Number of Songs: Up to 5 download songs Capacity: Approximately 80 kilobytes
Sing Along Mode	
Number of Tunes:	Song Bank/Sing Along: 65
Controllers:	PLAY/STOP, KEY CONTROL (25 steps, -12 semitones to +12 semitones)
Metronome:	On/Off
Beat Specification:	0, 2 to 6
Song Memory	
Number of Songs:	Two (1 Lesson Recording, 1 Performance Recording)
Recorded Data:	Lesson Recording: Right-hand part, left-hand part, both-hand parts Performance Recording: Track 1 (chord accompaniment), Track 2 (melody)
Recording Method:	Real-time
Memory Capacity:	Approximately 5,200 notes (two songs)
Other Functions	
Transpose:	25 steps (-12 semitones to +12 semitones)
Tuning:	101 steps (A4 = approximately 440Hz ±50Cents)
Card Slot:	3.3V SmartMedia™ (8MB, 16MB, 32MB, 64MB, 128MB)
Functions:	Playback of SMF; card formatting

Terminals

SUSTAIN/ASSIGNABLE JACK: Standard jack (sustain, sostenuto, soft, rhythm start/stop)

HEADPHONE/OUTPUT Jack: Stereo standard jack

Output Impedance: 100Ω

Output Voltage: 4V (RMS) MAX

Microphone In: Standard jack (with microphone volume knob)

Input impedance: 3KΩ

Input sensitivity: 10mV

USB port

VIDEO OUT Jack: Output Voltage: 1Vp-p MAX

Power Jack: 9V DC

Power Supply: 2-way

Batteries: 6 AA-size batteries

Battery Life: Approximately 2.5 hours continuous operation on alkaline batteries

AC Adaptor: AD-5

Auto Power Off: Turns power off approximately 6 minutes after last key operation. Enabled under batter power only, can be disabled manually.

Speaker Output: 2.5W + 2.5W

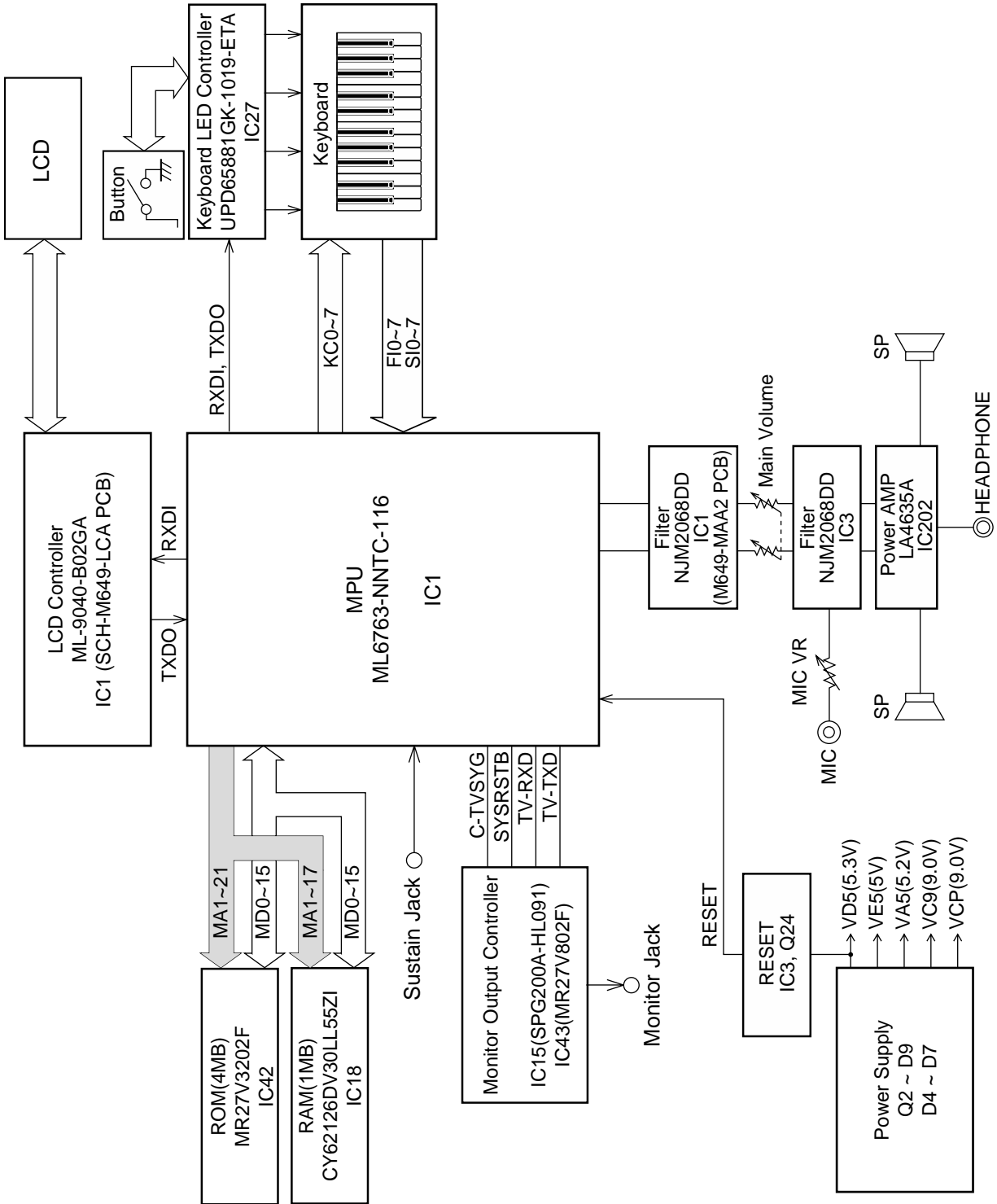
Power Consumption: 9V \approx 7.7W

Dimensions: 94.4 × 38.7 × 14.2 cm (37 ³/₁₆ × 15 ¹/₄ × 5 ⁹/₁₆ inch)

Weight: Approximately 5.1kg (11.2 lbs)(without batteries)

- Design and specifications are subject to change without notice.

BLOCK DIAGRAM

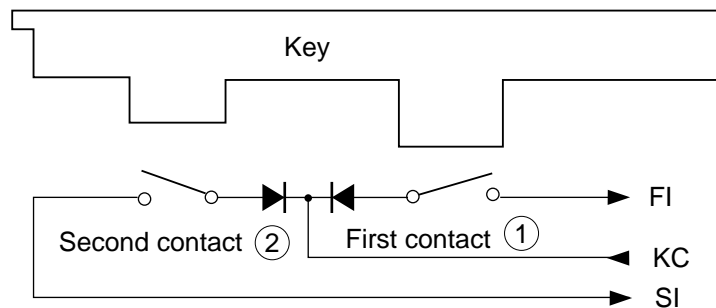


CIRCUIT DESCRIPTION

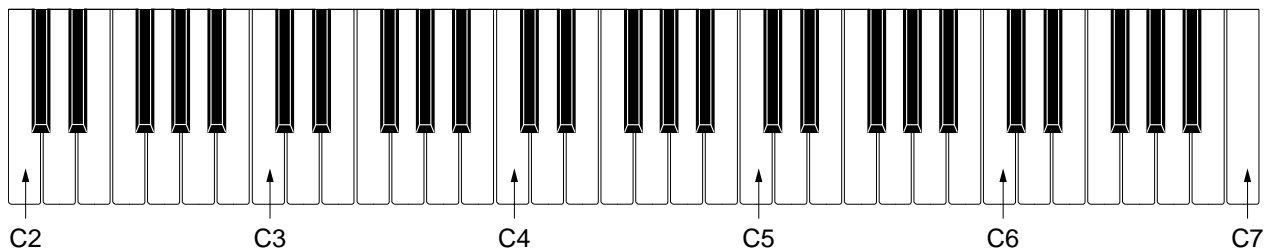
KEY MATRIX

	KC0	KC1	KC2	KC3	KC4	KC5	KC6	KC7
FI0	C2①	C2#①	D2①	D2#①	E2①	F2①	F2#①	G2①
SI0	C2②	C2#②	D2②	D2#②	E2②	F2②	F2#②	G2②
FI1	G2#①	A2①	A2#①	B2①	C3①	C3#①	D3①	D3#①
SI1	G2#②	A2②	A2#②	B2②	C3②	C3#②	D3②	D3#②
FI2	E3①	F3①	F3#①	G3①	G3#①	A3①	A3#①	B3①
SI2	E3②	F3②	F3#②	G3②	G3#②	A3②	A3#②	B3②
FI3	C4①	C4#①	D4①	D4#①	E4①	F4①	F4#①	G4①
SI3	C4②	C4#②	D4②	D4#②	E4②	F4②	F4#②	G4②
FI4	G4#①	A4①	A4#①	B4①	C5①	C5#①	D5①	D5#①
SI4	G4#②	A4②	A4#②	B4②	C5②	C5#②	D5②	D5#②
FI5	E5①	F5①	F5#①	G5①	G5#①	A5①	A5#①	B5①
SI5	E5②	F5②	F5#②	G5②	G5#②	A5②	A5#②	B5②
FI6	C6①	C6#①	D6①	D6#①	E6①	F6①	F6#①	G6①
SI6	C6②	C6#②	D6②	D6#②	E6②	F6②	F6#②	G6②
FI7	G6#①	A6①	A6#①	B6①	C7①			

Note: Each key has two contacts, the first contact ① and second contact ②.



NOMENCLATURE OF KEYS



KEY LED MATRIX

	L0	L1	L2	L3	L4	L5	L6	L7	L8	L9	L10
L21	A2#	F4	B4	E5	A5	D6	G6	C7	A6#	G6#	F6#
L22	G2#	E4	A4	D5	G5	C6	F6	B6	A5#	C6#	D6#
L23	C2	D4	G4	C5	F5	B5	E6	A6	G5#	F5#	D5#

	L11	L12	L13	L14	L15	L16	L17	L18	L19	L20
L21	C3#	D3#	F3#	G2	C3	F3	D4#	C4#	A3#	G3#
L22	F2#	D2#	C2#	F2	B2	E3	F4#	G4#	A4#	C5#
L23			D2	E2	A2	D3	G3	A3	B3	C4

BUTTON MATRIX

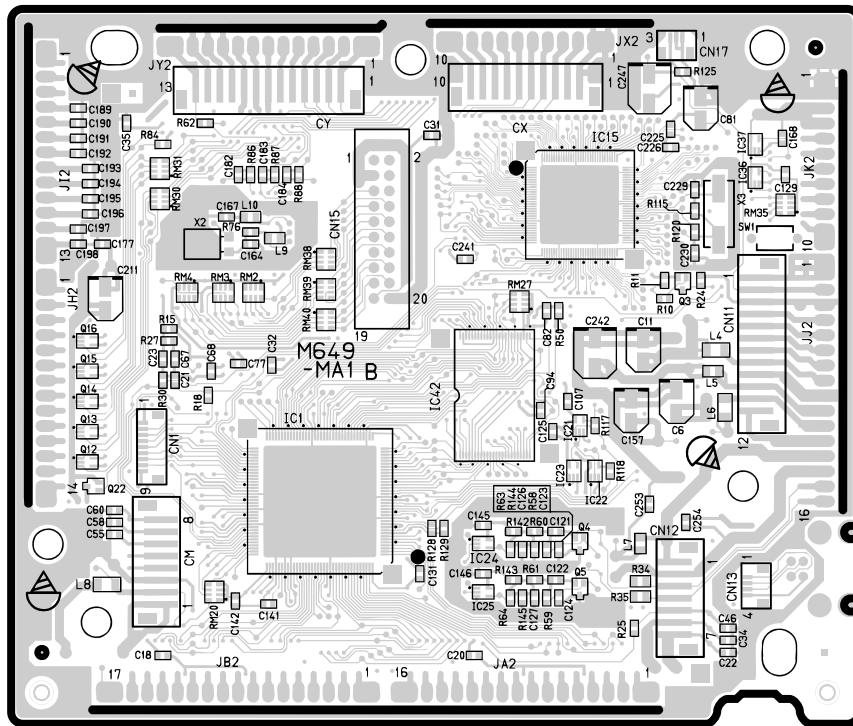
	SWI0	SWI1	SWI2	SWI3	SWI4	SWI5	SWI6	SWI7
SWO0	SCORING1	STEP 2	3	TONE	5	PLAY/STOP	SONG MEMORY	PAUSE
SWO1	PRACTICE PHRASE	STEP 3	0	7	6	KEY CONTROL/ TRANSPOSE ←	KEY CONTROL/ TRANSPOSE →	SING ALONG
SWO2	STEP 1	-	+	4	8	REW	FF	MODE (NOMAL)
SWO3	SCORING2	SPEAK	SCORING3	METRONOME	REP	PLAY/STOP	TOUCH RESPONSE/ SETTIN	MODE (CASIO CHORD)
SWO4	LAYER	SPLIT	2	RHYTHM	9	DEMO	KEY LIGHT	MODE (FINGERED)
SWO5	TRACK 2 RIGHT	TRACK1 LEFT	1	SONG BANK	PIANO BANK	TEMPO ←	TEMPO →	MODE (FULL RANGE CHORD)
SWO6	-	-	-	-	CARD	-	-	-

LED MATRIX

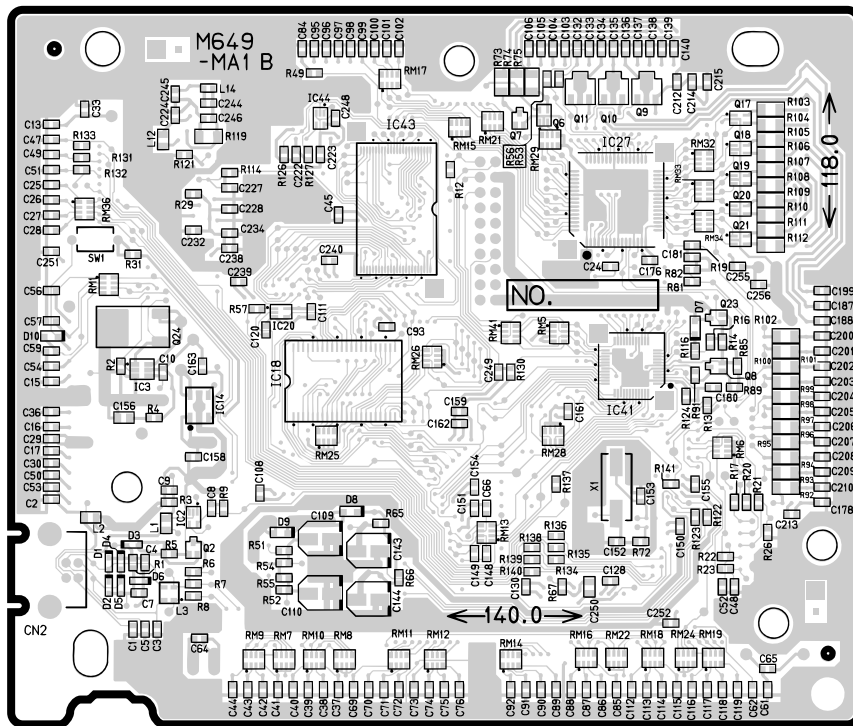
	LH21	LH22
LL1	DATA ACCESS	RHYTHM ST/SP
LL2	-	SONG ST/SP

PRINTED CIRCUIT BOARDS

M649-MAIN PCB

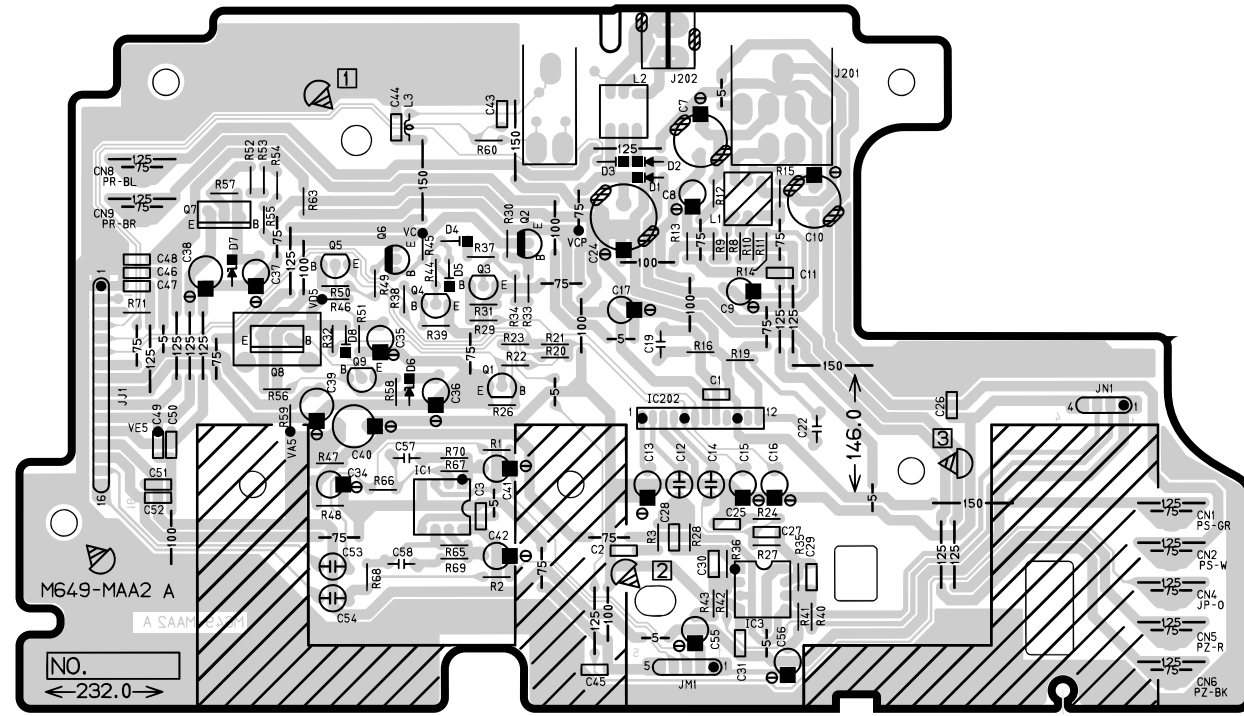


Top View

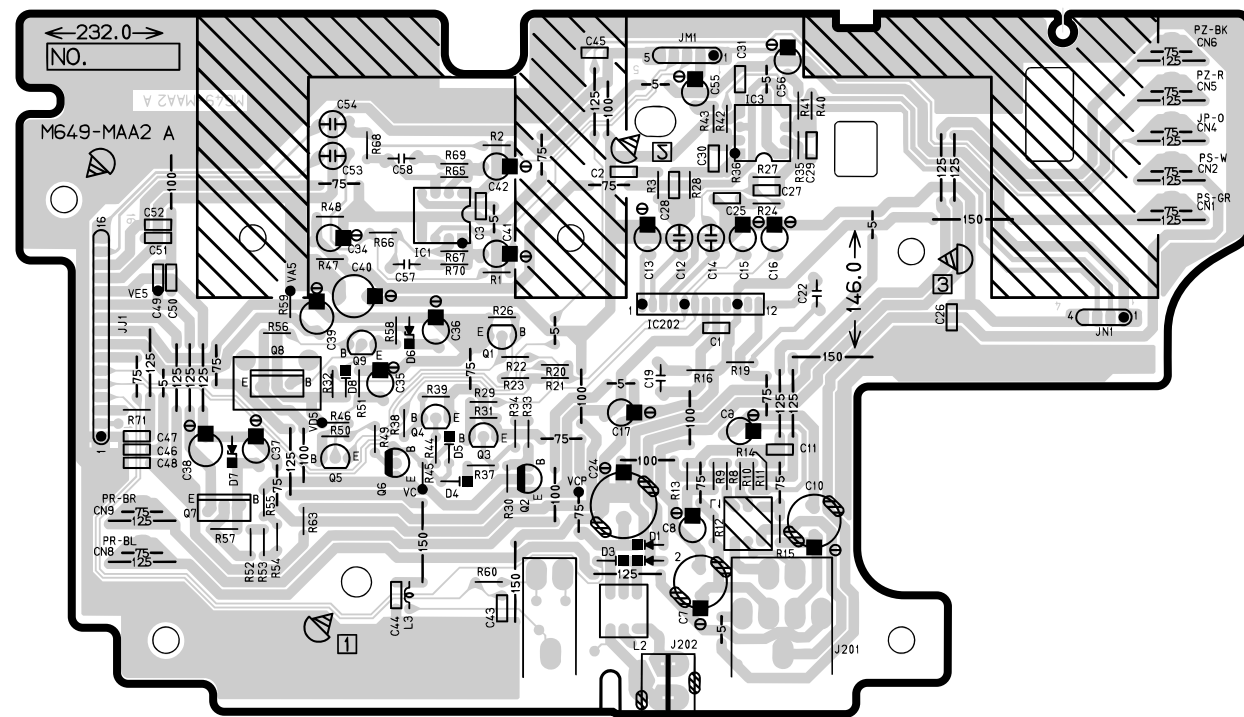


Bottom View

M649-SUB1 PCB

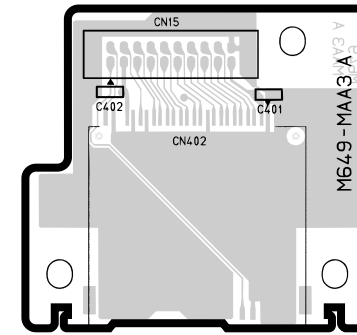


Top View

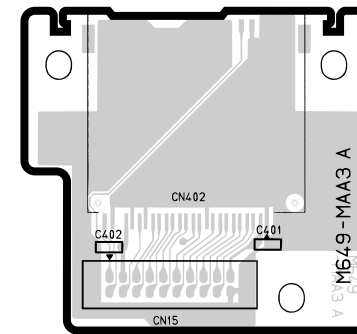


Bottom View

M649-SUB2 PCB

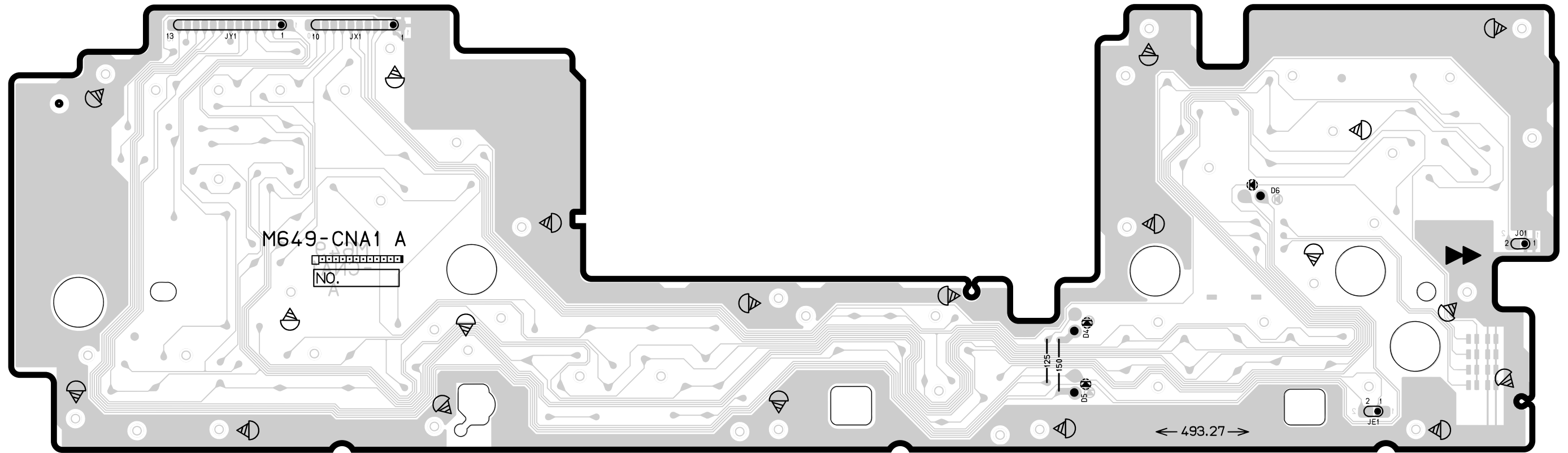


Top View

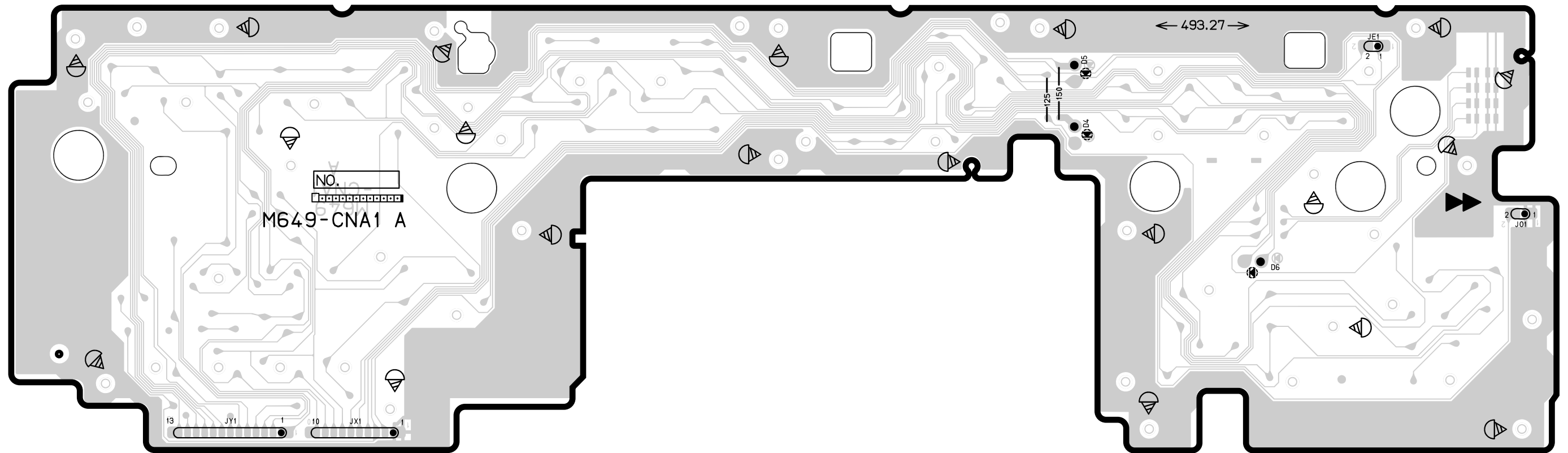


Bottom View

M649-CONSOLE PCB

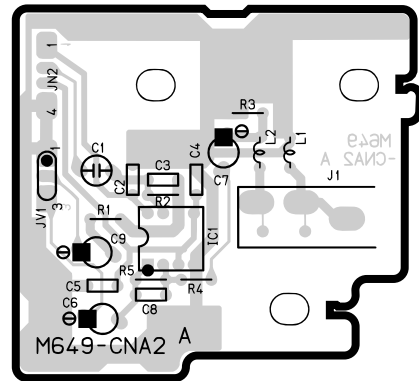


Top View

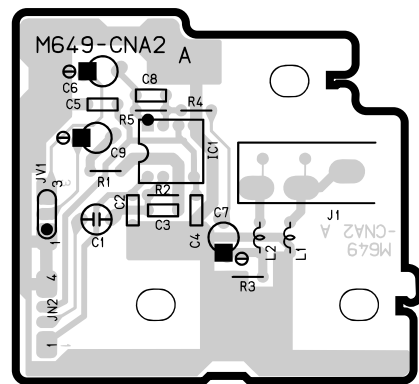


Bottom View

M649-CONSOLE2 PCB

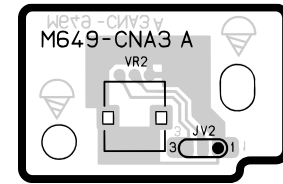


Top View

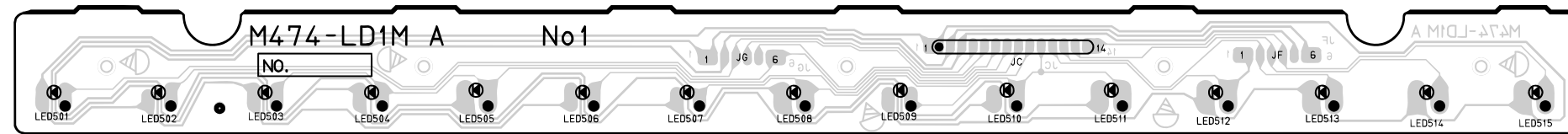


Bottom View

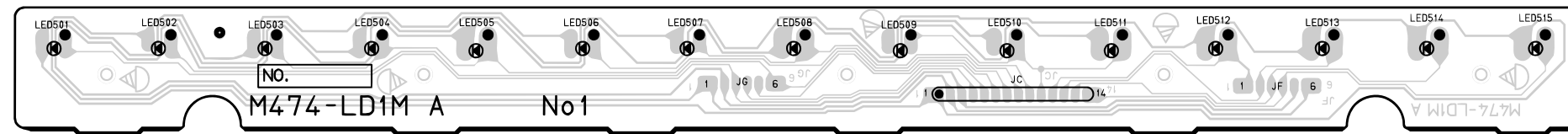
M649-CONSOLE3 PCB



M474-LED1 PCB

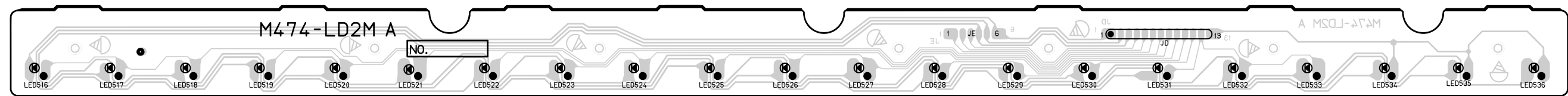


Top View

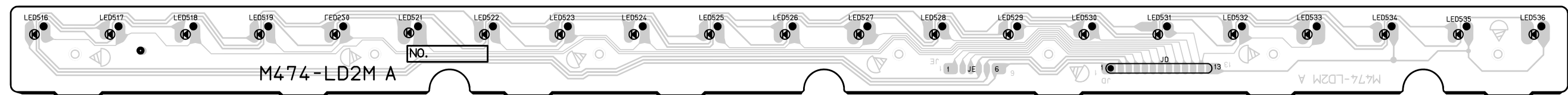


Bottom View

M474-LED2 PCB

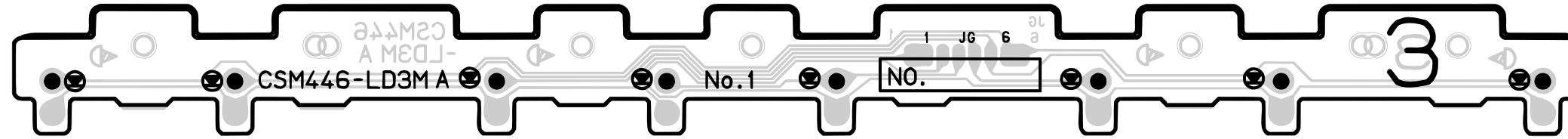


Top View

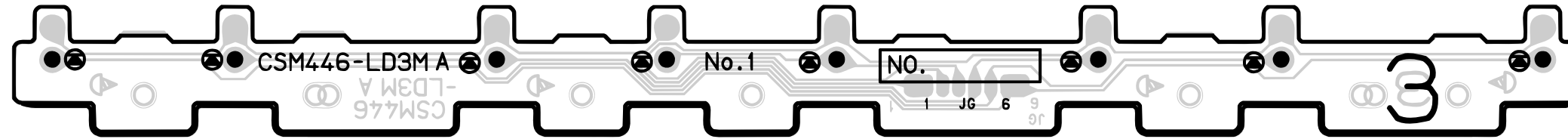


Bottom View

CSM446-LED3 PCB

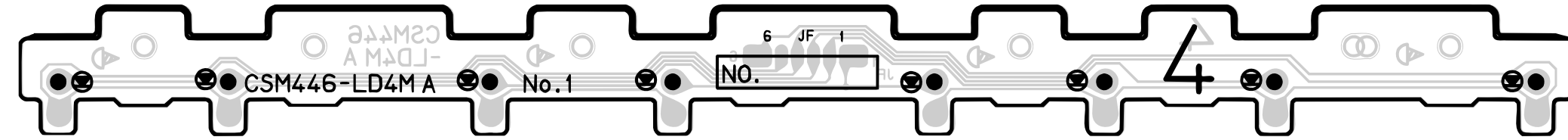


Top View

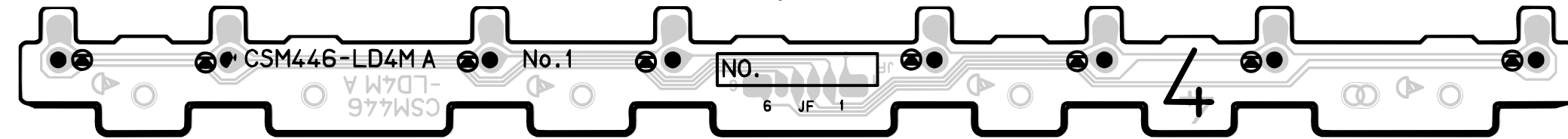


Bottom View

CSM446-LED4 PCB

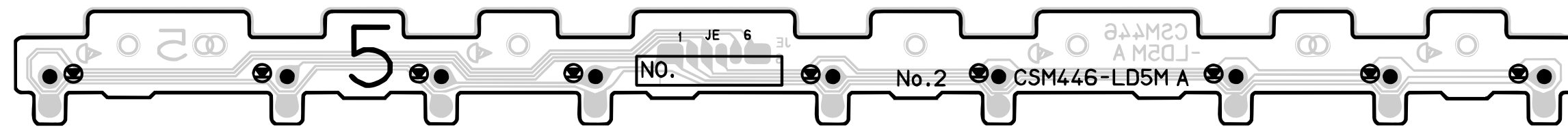


Top View

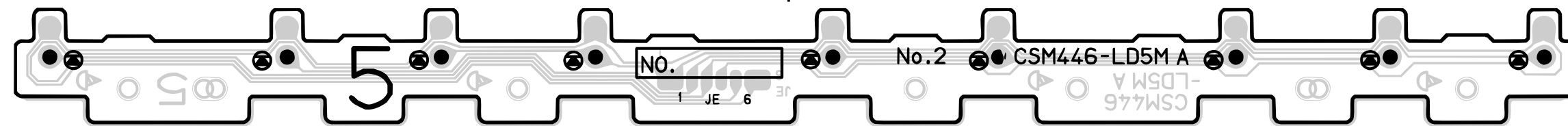


Bottom View

CSM446-LED5 PCB

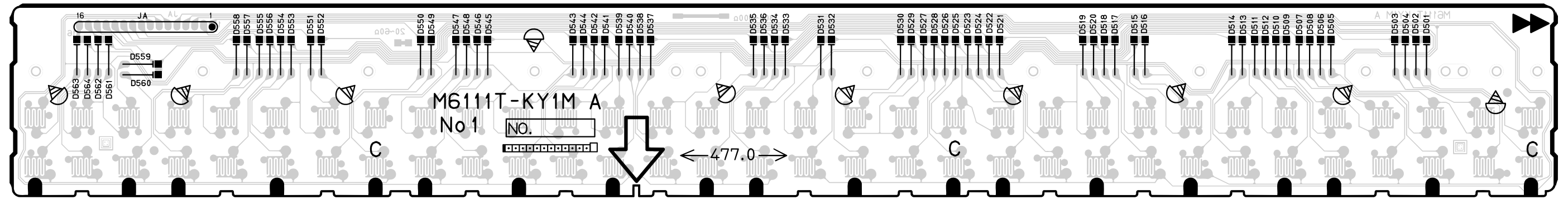


Top View

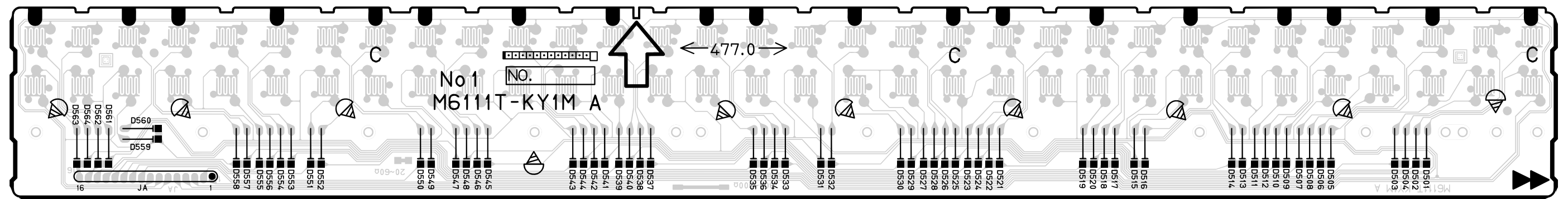


Bottom View

M6111T-KEY1 PCB

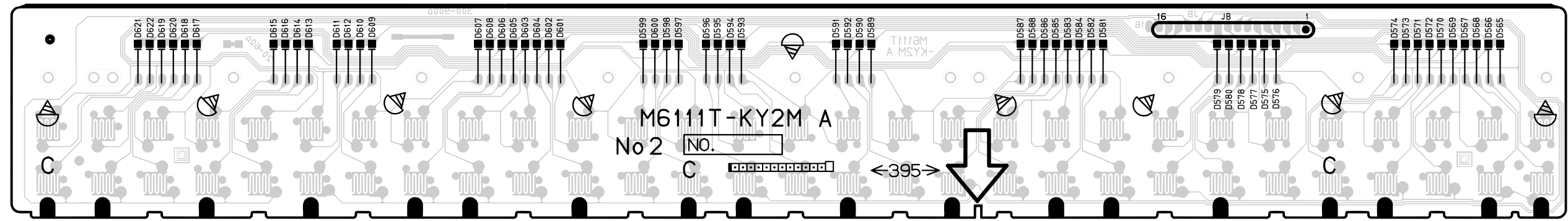


Top View

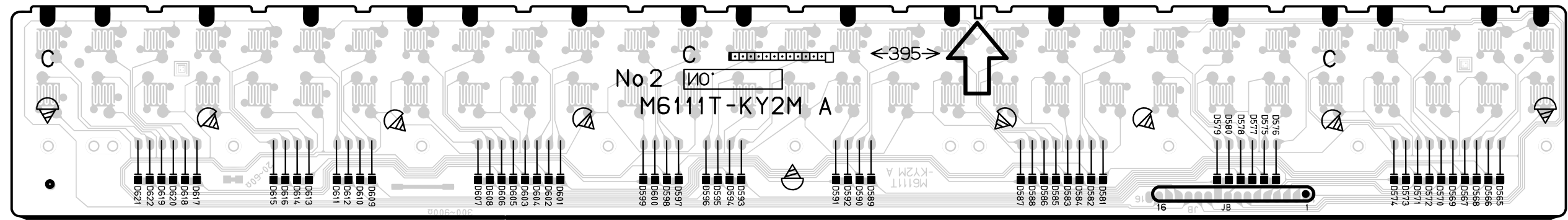


Bottom View

M6111T-KEY2 PCB



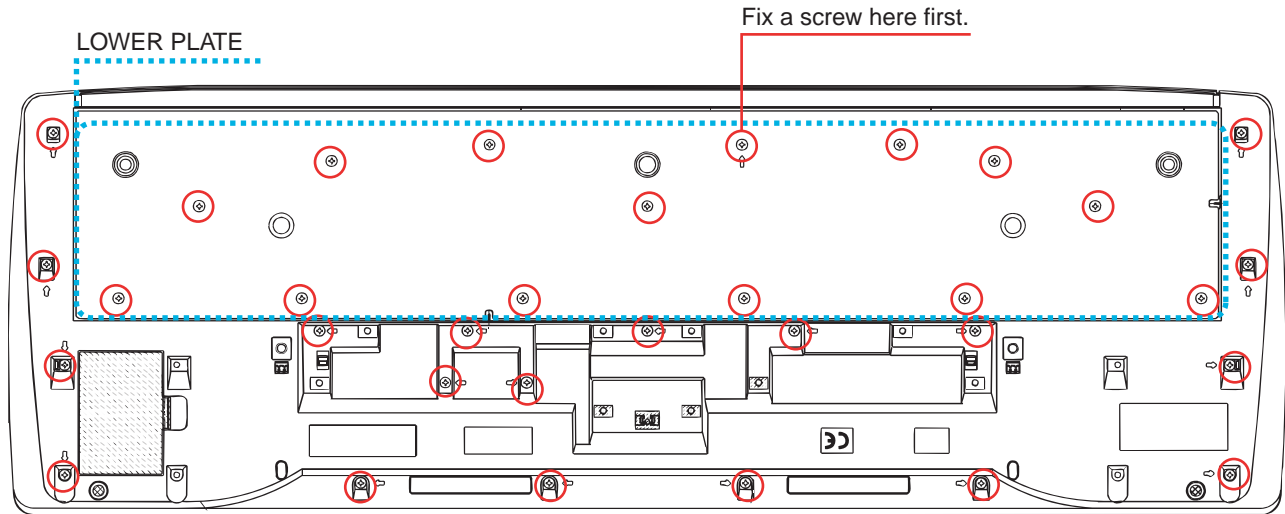
Top View



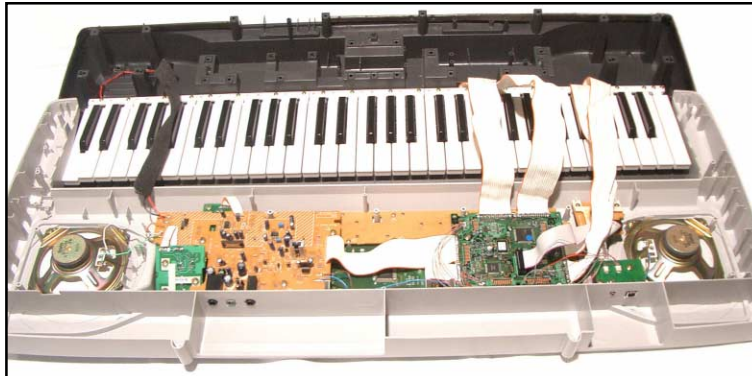
Bottom View

DISASSEMBLY

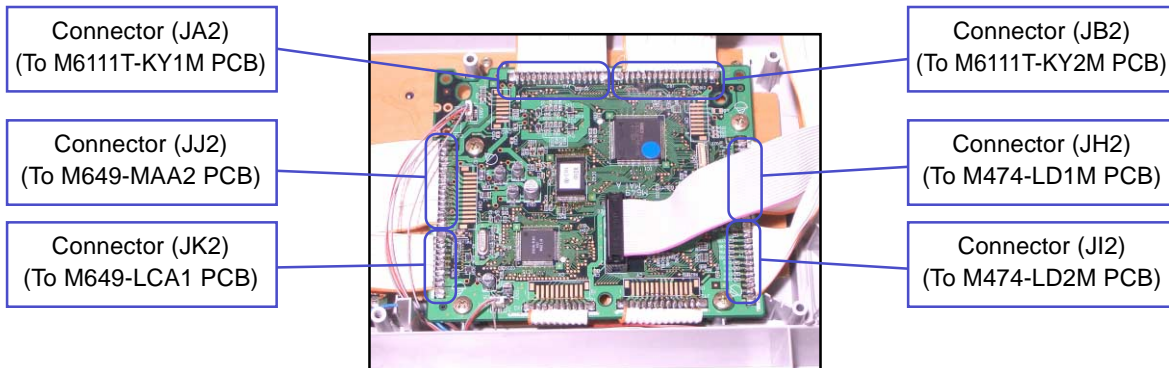
1. Remove the battery cover and the batteries.
2. Remove 14 screws on the bottom of the product, and the lower plate.
Note: Fix the screws in the right order when assembling.
3. Remove 19 screws on the bottom of the product.
Note: Make sure to fix the screws with the arrow marks ↴ in the below figure only.



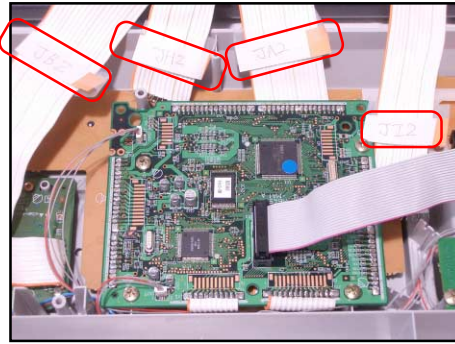
4. Remove the upper case.



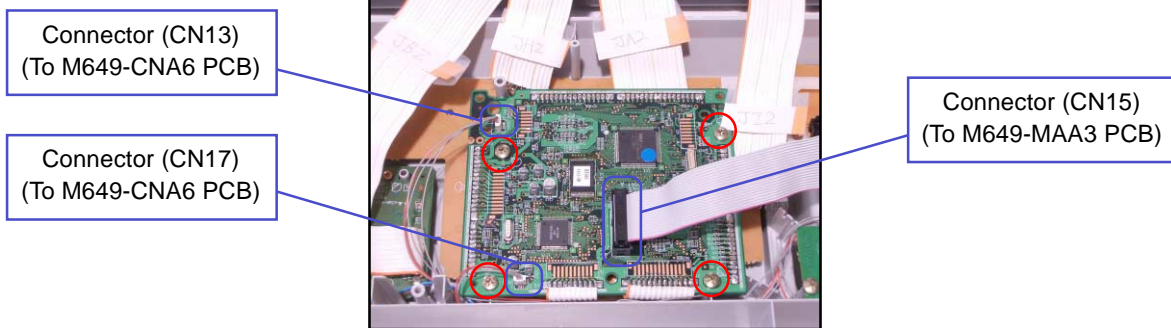
5. Unsolder six connectors.



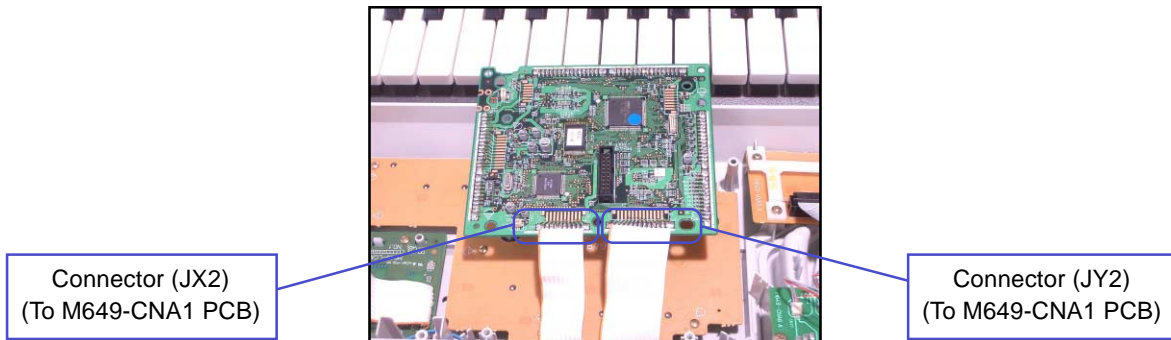
Tip: For easier assembly, it is a good idea to give each cable a name of a corresponding connector.



6. Remove four screws and three connectors.

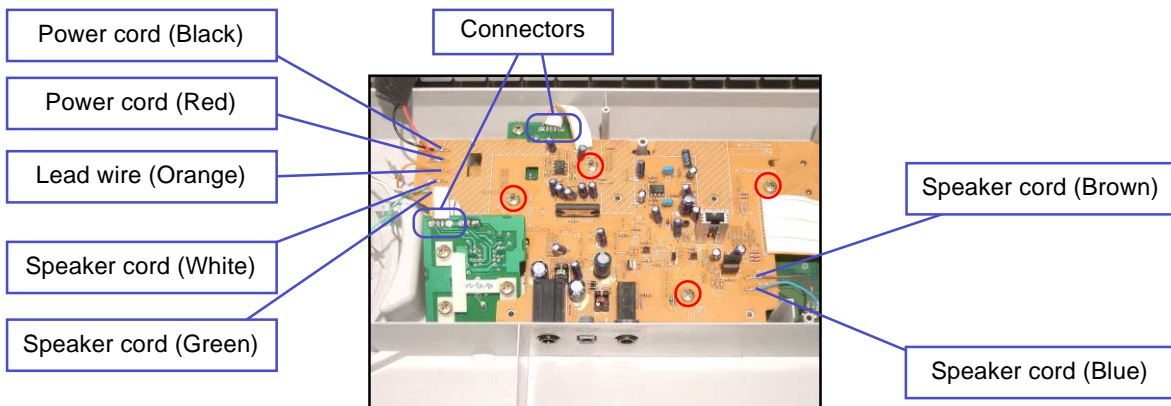


7. Unsolder two connectors, and then remove the M649-MA1 PCB.

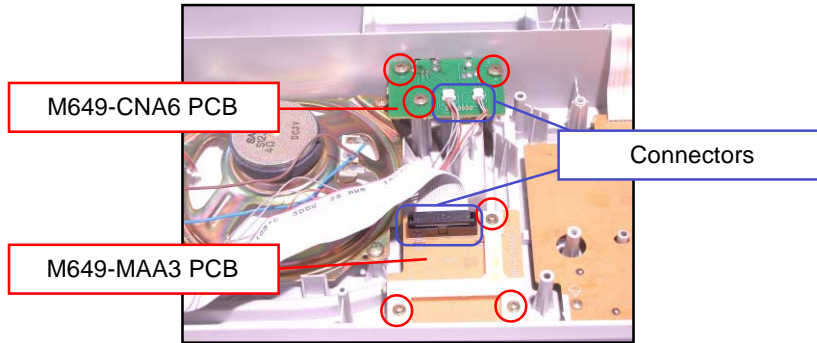


8. Unsolder two connectors, and then remove seven lead wires.

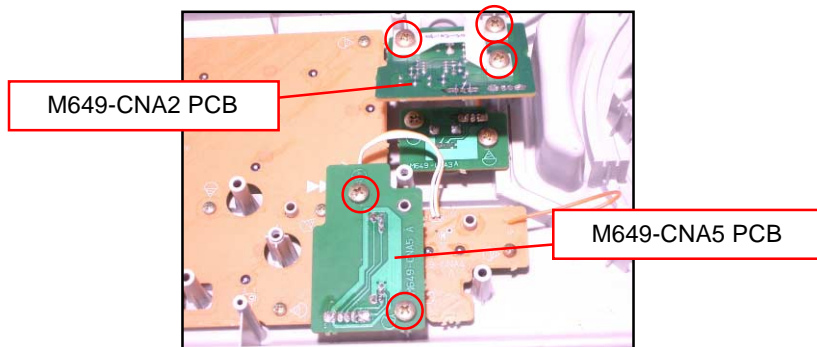
9. Remove four screws, and then remove the M649-MAA2 PCB.



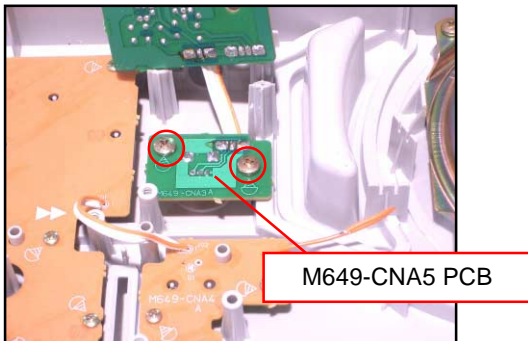
10. Remove three screws and one connector, and then remove the M649-MAA3 PCB.
11. Remove three screws and two connectors, and then remove the M649-CNA6 PCB.



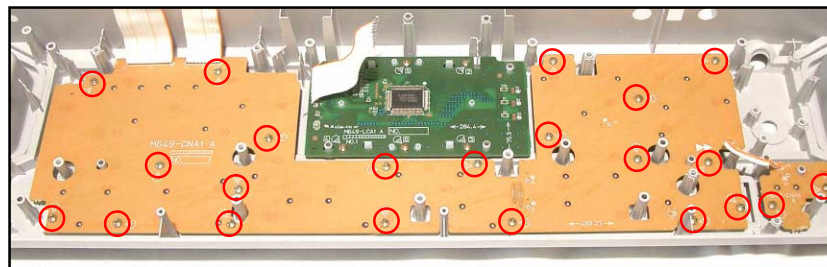
12. Remove two screws and the M649-CNA5 PCB.
13. Remove three screws and the M649-CNA2 PCB.



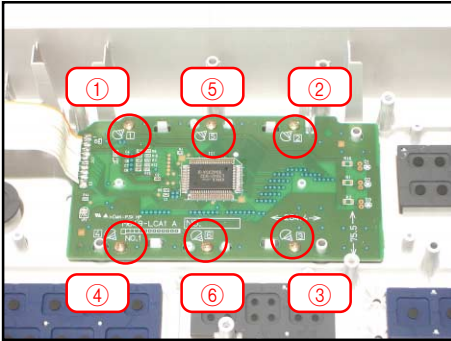
14. Remove 2 screws.
15. Remove the volume knob and the M649-CNA3 PCB.



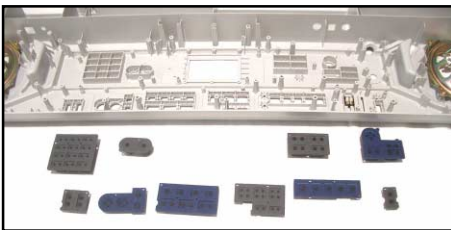
16. Remove 20 screws and the M649-CNA1 PCB.
17. Remove two screws and the M649-CNA4 PCB.



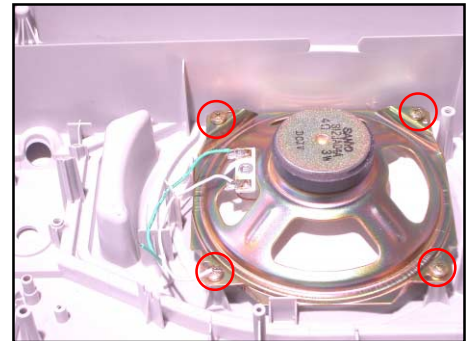
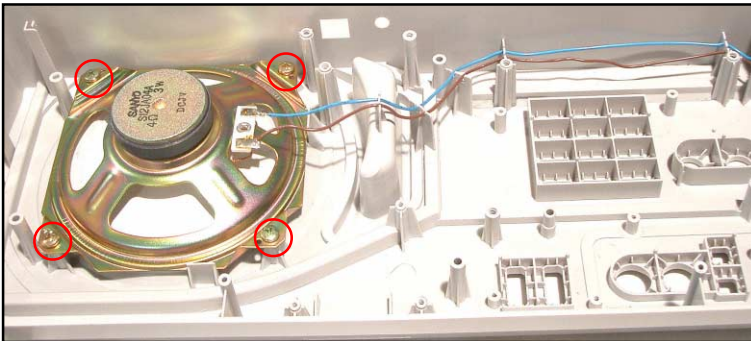
18. Remove six screws and the M649-LCA1 PCB.
Note: Fix the screws in the right order when assembling.



19. Remove the rubber keys.

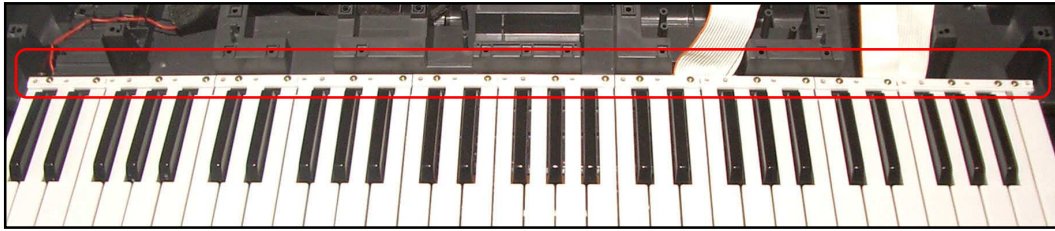


20. Remove eight screws and two speakers.
Note: Store the lead wire in the guide rail when assembling.

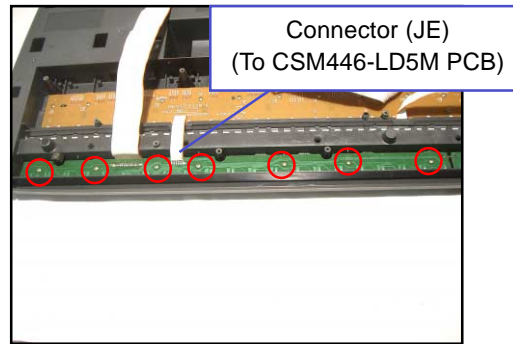
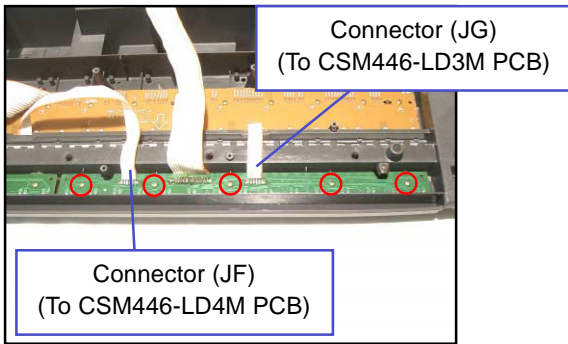


21. Remove eight screws and two speakers.
Note: Store the lead wire in the guide rail when assembling.

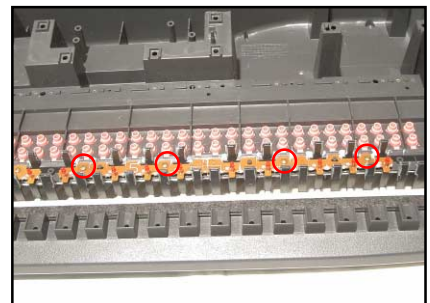
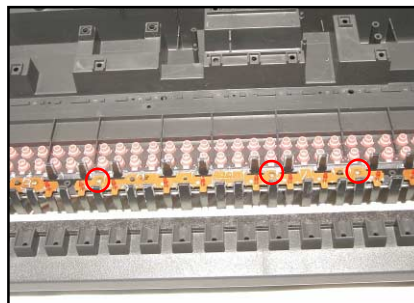
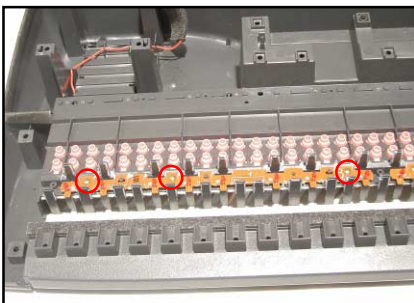
22. Remove 21 screws and the keys.



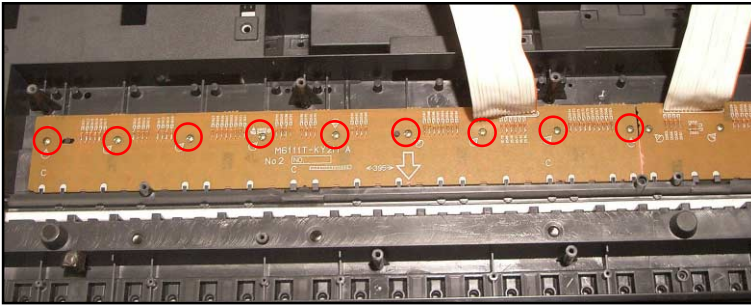
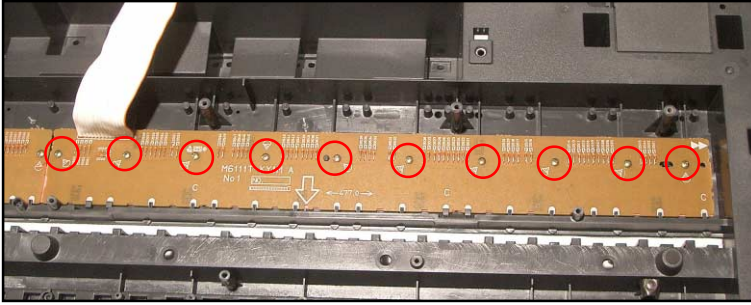
23. Remove five screws and unsolder two connectors (JG, JF), and then remove the M474-LD1M PCB.
24. Remove seven screws and unsolder one connector (JE), and then remove the M474-LD2M PCB.



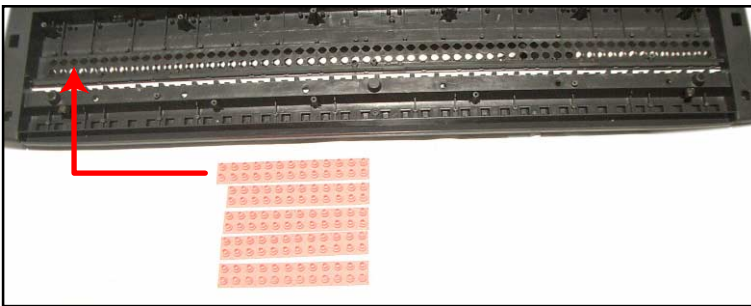
25. Remove three screws and the CSM446-LD3M PCB.
26. Remove three screws and the CSM446-LD4M PCB.
27. Remove three screws and the CSM446-LD5M PCB.



- 28. Remove 10 screws and the M6111T-KY1M PCB.
- 29. Remove nine screws and the M6111T-KY2M PCB.



- 30. Remove five rubber keys on the keyboard.
Note: The length of this one rubber key is different.



DIAGNOSTIC PROGRAM

■ Initial Setting

1. Connect the AC adaptor.
2. Connect a Sustain pedal.
3. "MODE" switch: NORMAL
4. "Main" volume: MAX
5. "MIC" volume: MIN

■ How to start diagnostic program

1. Press the "POWER" button while pressing the "0" buttons.

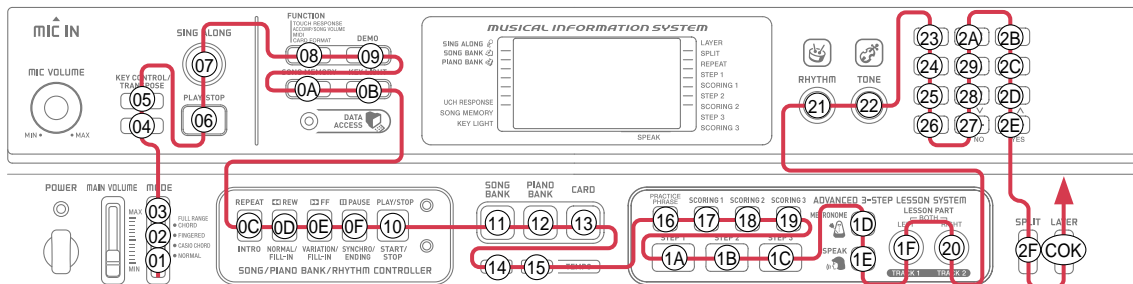
NOTE: Refer to the figure below for the LCD messages that appear during the diagnostic program.

■ Diagnostic program

1. SWITCH check

- ① Press "0" button. 00
* Wait for confirmation sound.
- ② Slide switches or press buttons in the order from No.01 to No.2F. BUTTON NO.
NOTE: The button numbers are written in hexadecimal numerals.
- ③ Press the "LAYER" button the last. COK
* Wait for confirmation sound.
* The Button number appears on the LCD. BUTTON NO.
* A buzzer sounds if buttons are pressed in a wrong order, and "CER" appears on LCD.
NOTE: This check cannot be aborted in mid-course.

Message on LCD



Message on LCD

2. AC adaptor check

- ① Press “-” button.

JOK

3. Pedal check

- ① Press “1” button.
- ② “Sustain pedal”: ON
- ③ “Sustain pedal”: OFF

TCH

SUS

4. ROM check

- ① Press “2” button.

OOK

5. MODEL check

- ① Press “3” button.

649

6. ROM Ver. check

- ① Press “3” button. (internal ROM)
- ② Press “3” button. (external ROM)

116

100

7. RAM check

- ① Press “+” button.

AOK

8. Sound check

- ① Press the “4” button.

* When standing in the center, the tester hears the minimum test sound in an equal volume from both right and left speakers.

MIN

- ② Press the “5” button.

* When standing in the center, the tester hears the medium test sound in an equal volume from both right and left speakers.

MID

- ③ Press the “6” button.

* When standing in the center, the tester hears the maximum test sound in an equal volume from both right and left speakers.

MAX

- ④ Press the “7” button.

* When standing in the center, the tester hears the maximum test sound from the left speaker.

L

- ⑤ Press the “8” button.

* When standing in the center, the tester hears the maximum test sound from the right speaker.

R

9. LCD check

- ① Press the “STEP1” button.

* All dots and characters of LCD turn on.

* There is no lack of the dot and the character.

10. KEY LED check

① Press "SCORING1" button.

* The key lights with pip sound in undermentioned the order.

* There must not be remarkable difference in the LED brightness of the adjacent key.

- | | |
|-----------------------------------|-----------------------------|
| 1) C1, D1, E1, F1, G1, A1, B1 | 6) C1#, D1#, F1#, G1#, A1 |
| 2) C2, D2, E2, F2, G2, A2, B2 | 7) C2#, D2#, F2#, G2#, A2# |
| 3) C3, D3, E3, F3, G3, A3, B3 | 8) C3#, D3#, F3#, G3#, A3# |
| 4) C4, D4, E4, F4, G4, A4, B4 | 9) C4#, D4#, F4#, G4#, A4# |
| 5) C5, D5, E5, F5, G5, A5, B5, C6 | 10) C5#, D5#, F5#, G5#, A5# |

11. Console LED check

① Press the "SPEAK" button.

* Keyboard LED must light in the undermentioned order.

- 1) DATA ACCESS
- 2) SONG CONTROLLER
- 3) RHYTHM CONTROLLER

12. CARD check

① Press the "CARD" button.

UOK

13. APO check

① Press the "PRACTICE PHRASE" button.

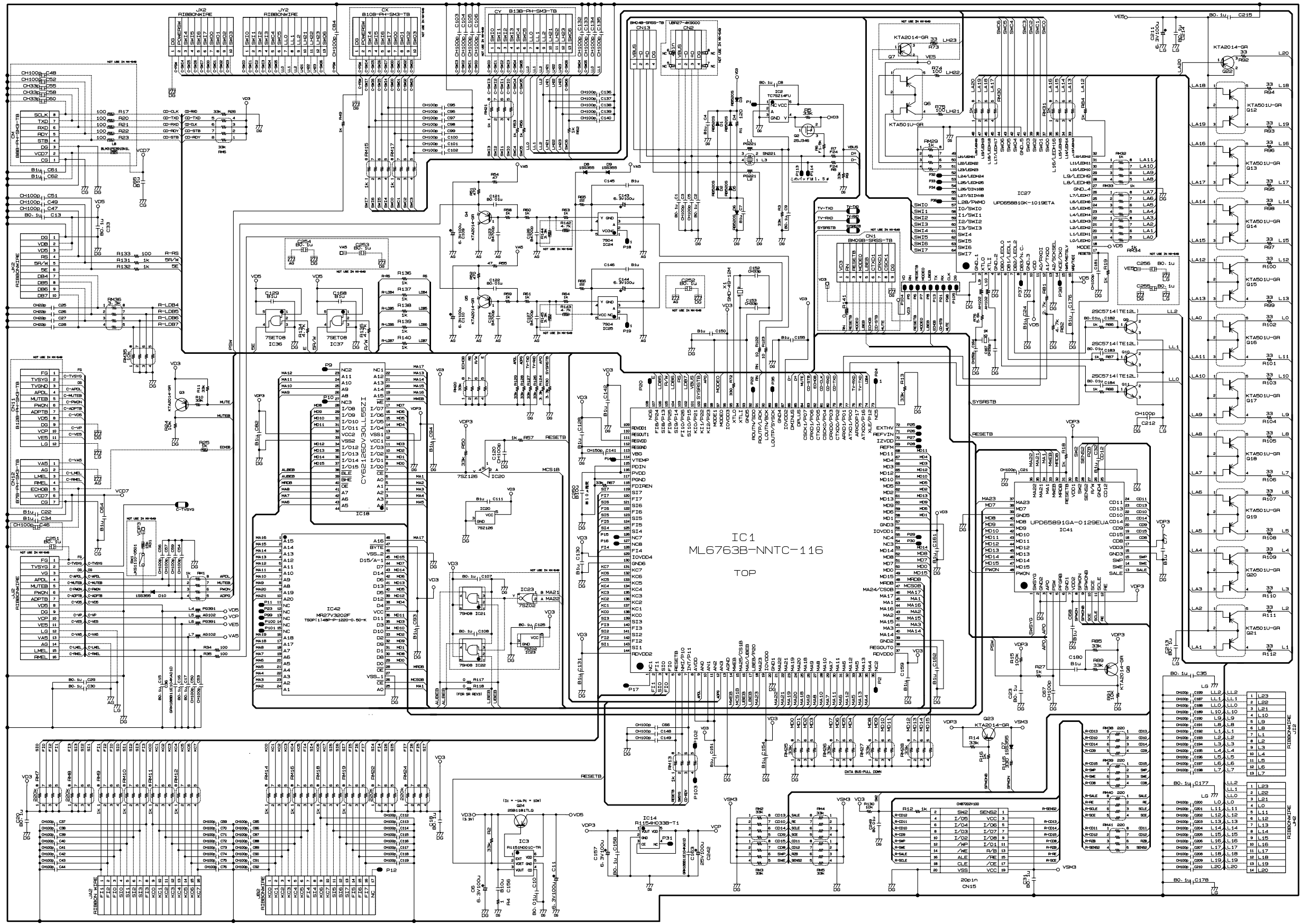
* Go out from TEST mode (Power off).

* The LCD turns off.

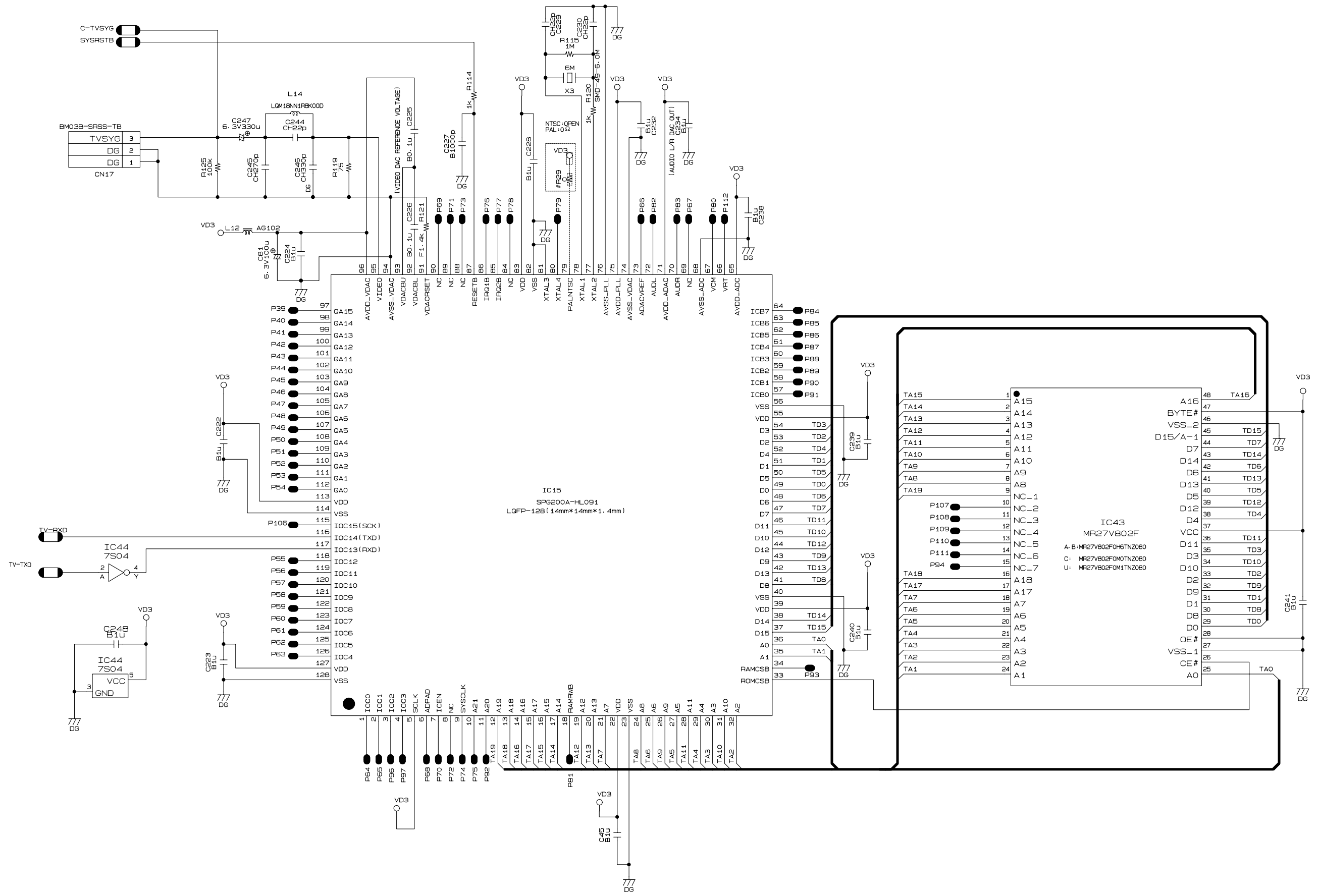
DIAGNOSTIC PROGRAM IS FINISHED.

SCHEMATIC DIAGRAMS

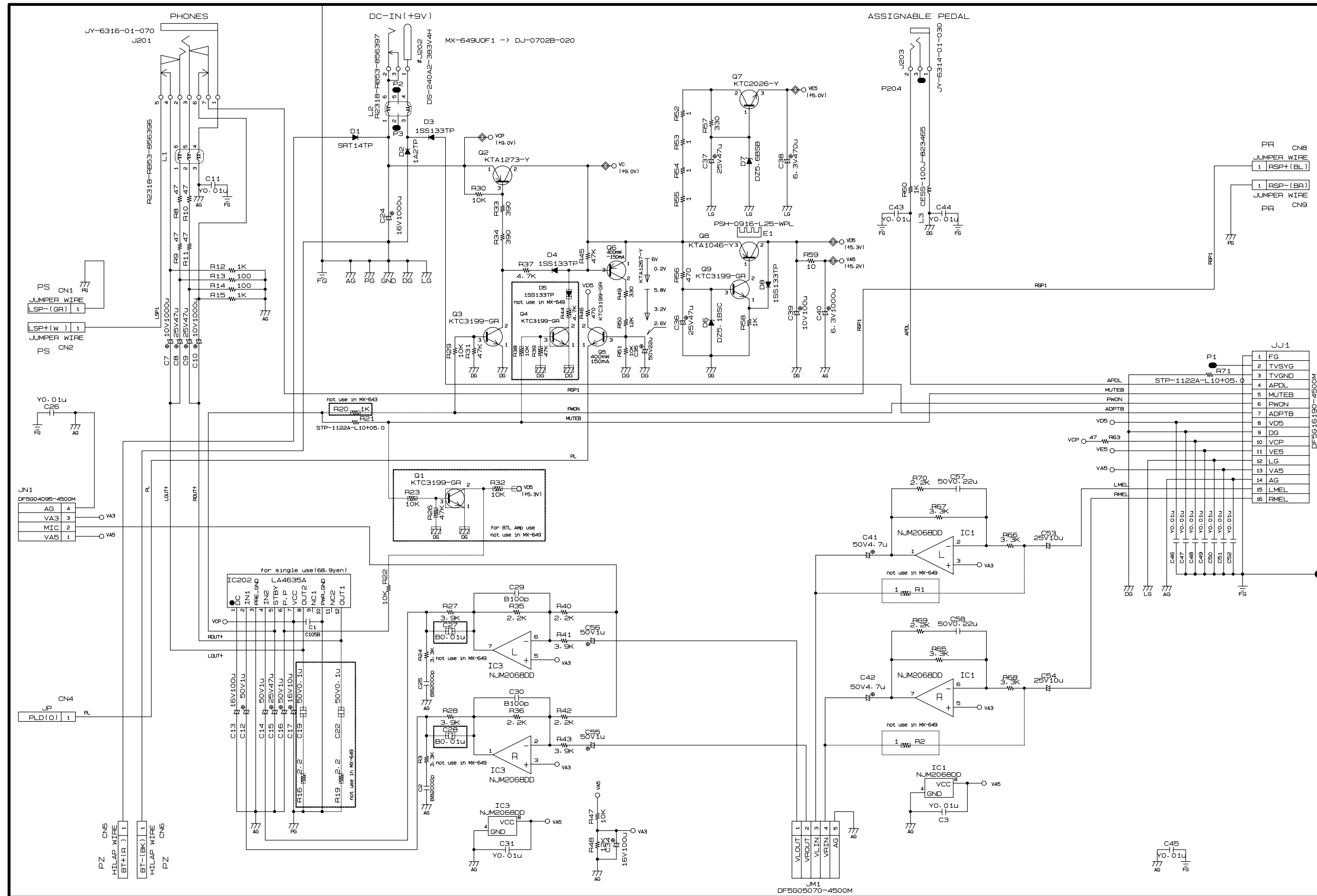
M649-MAIN PCB (1/2)



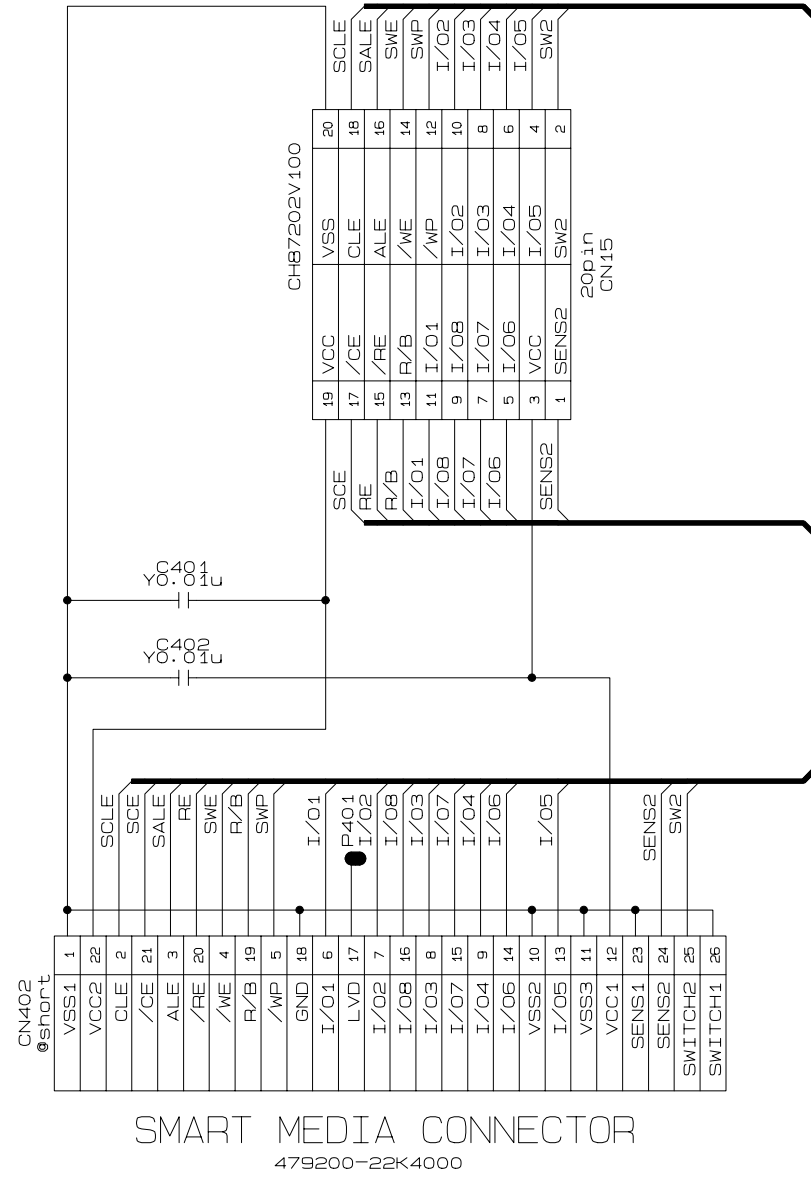
M649-MAIN PCB (2/2)



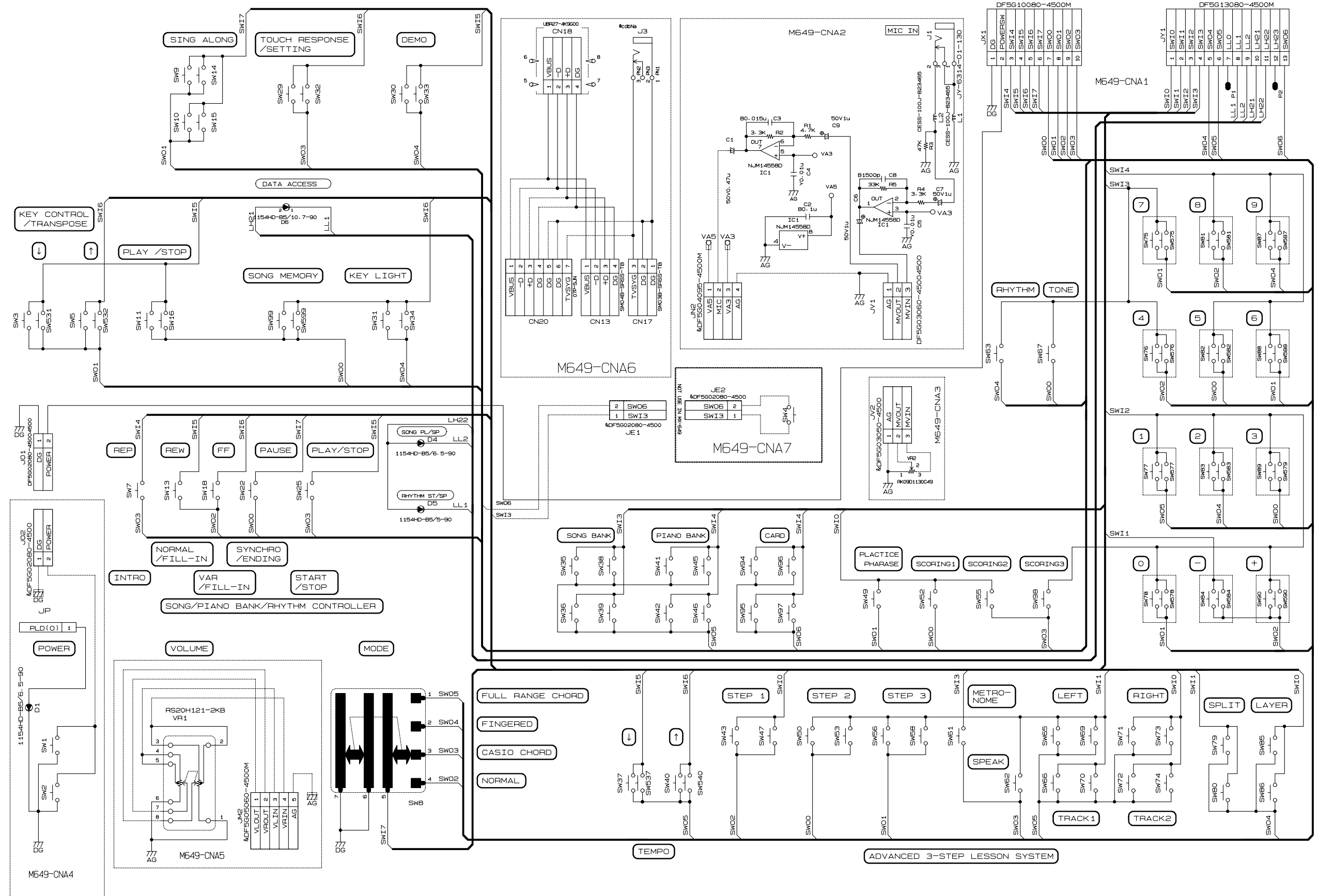
M649-SUB PCB (1/2)



M649-SUB PCB (2/2)

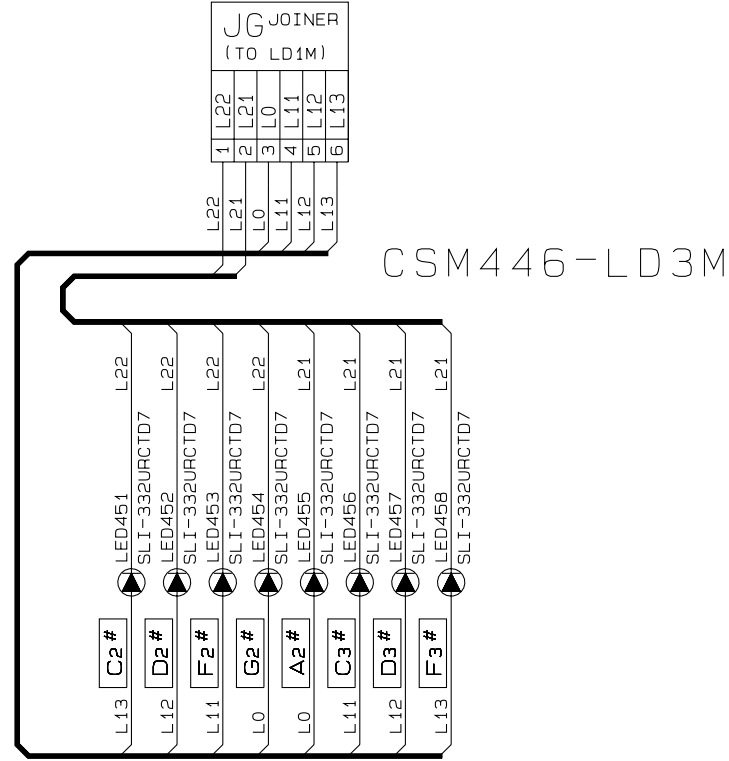
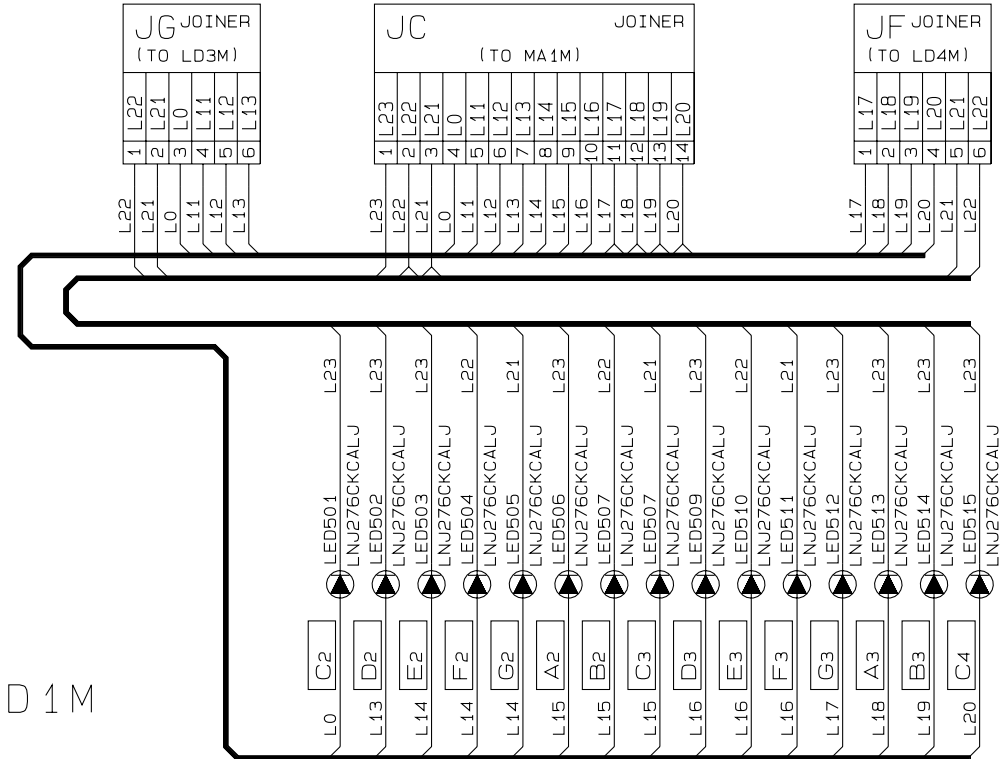


M649-CONSOLE PCB

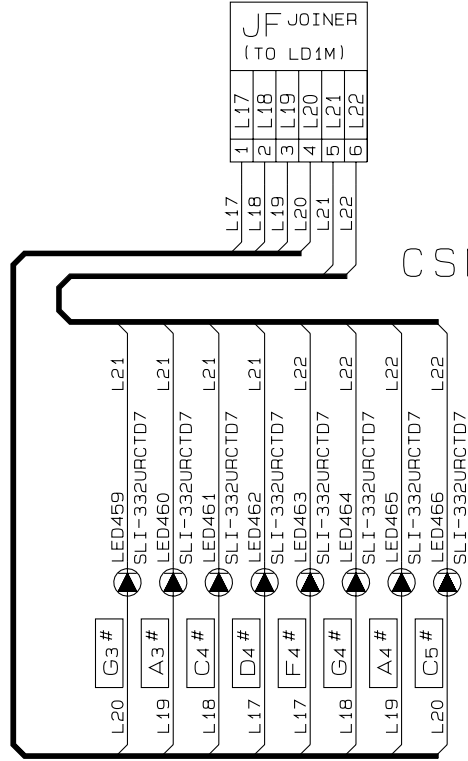


CSM446-LED PCBs

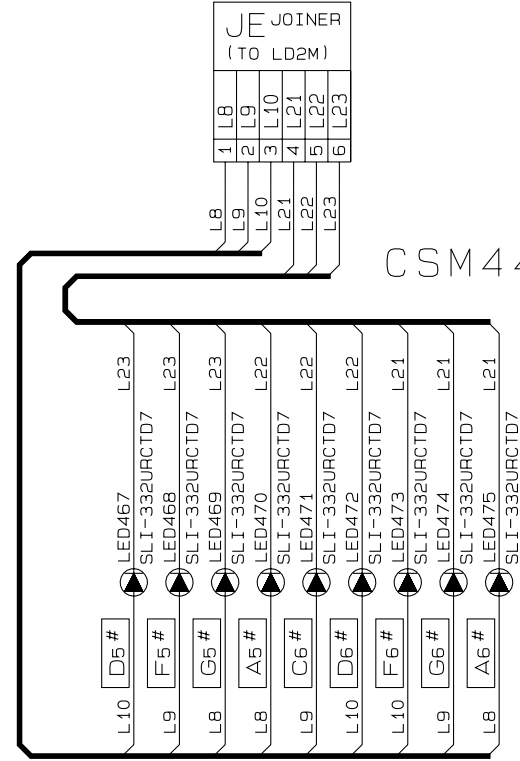
M474-LD1M



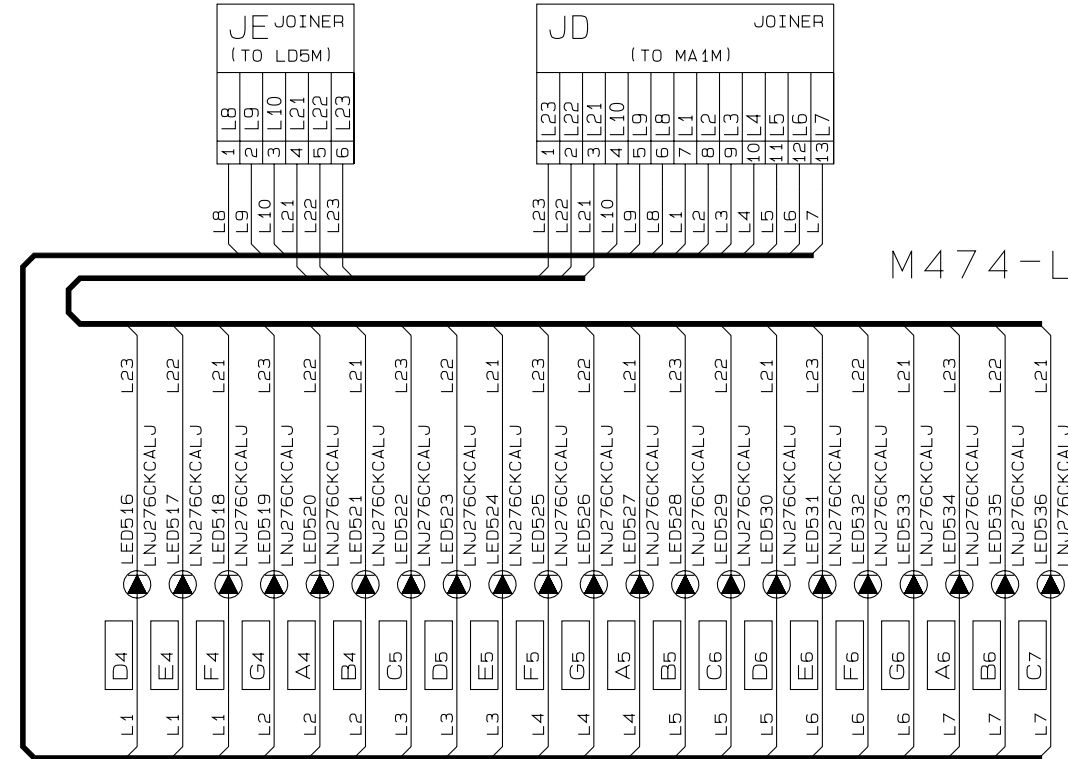
CSM446-LD3M



CSM446-LD4M

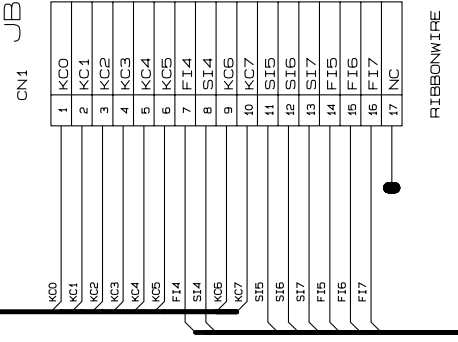
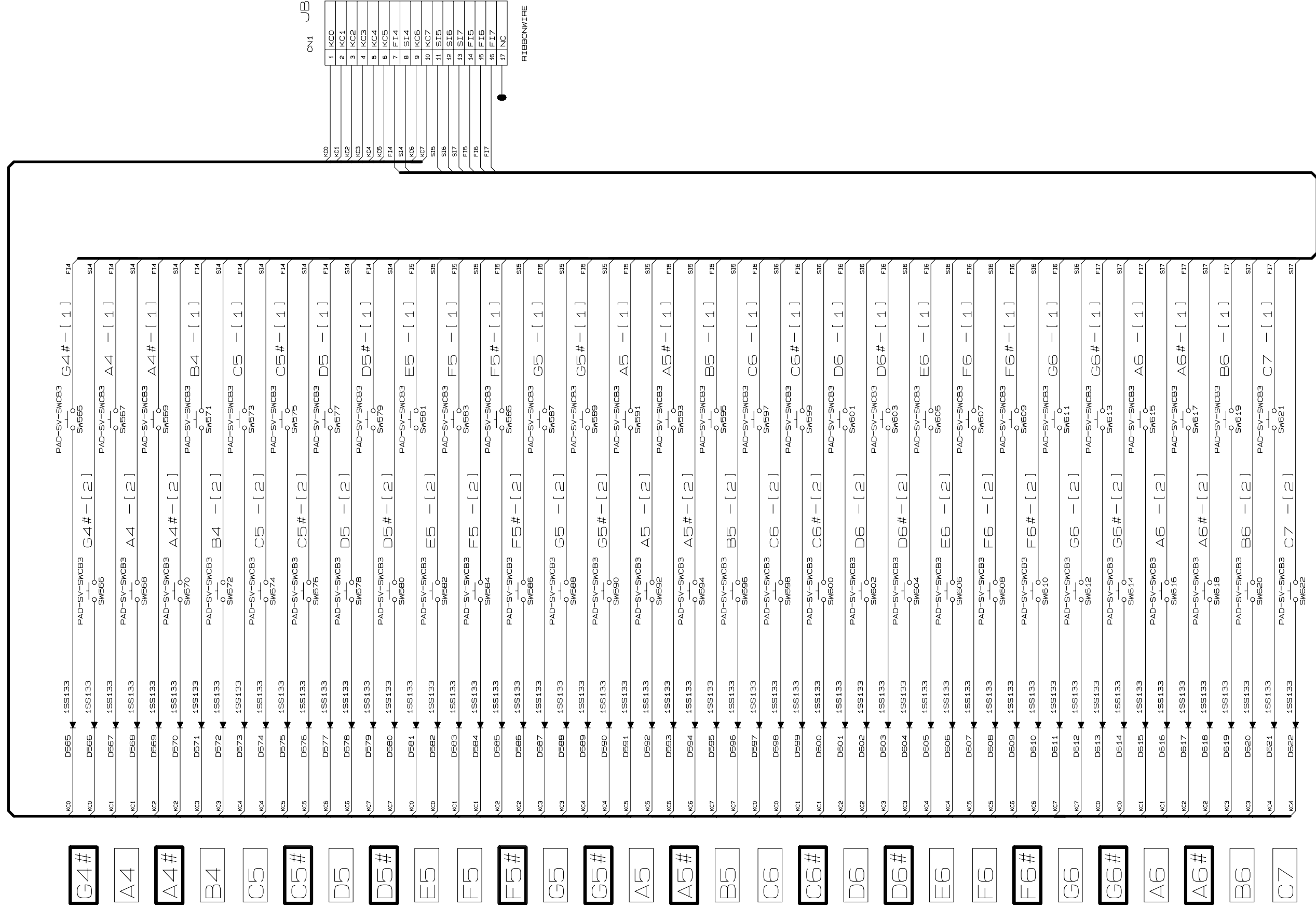


CSM446-LD5M



M474-LD2M

M6111T-KEY2 PCB



G4#

A4

A4#

B4

C5

C5#

D5

D5#

E5

F5

F5#

G5

G5#

A5

A5#

B5

C6

C6#

D6

D6#

E6

F6

F6#

G6

G6#

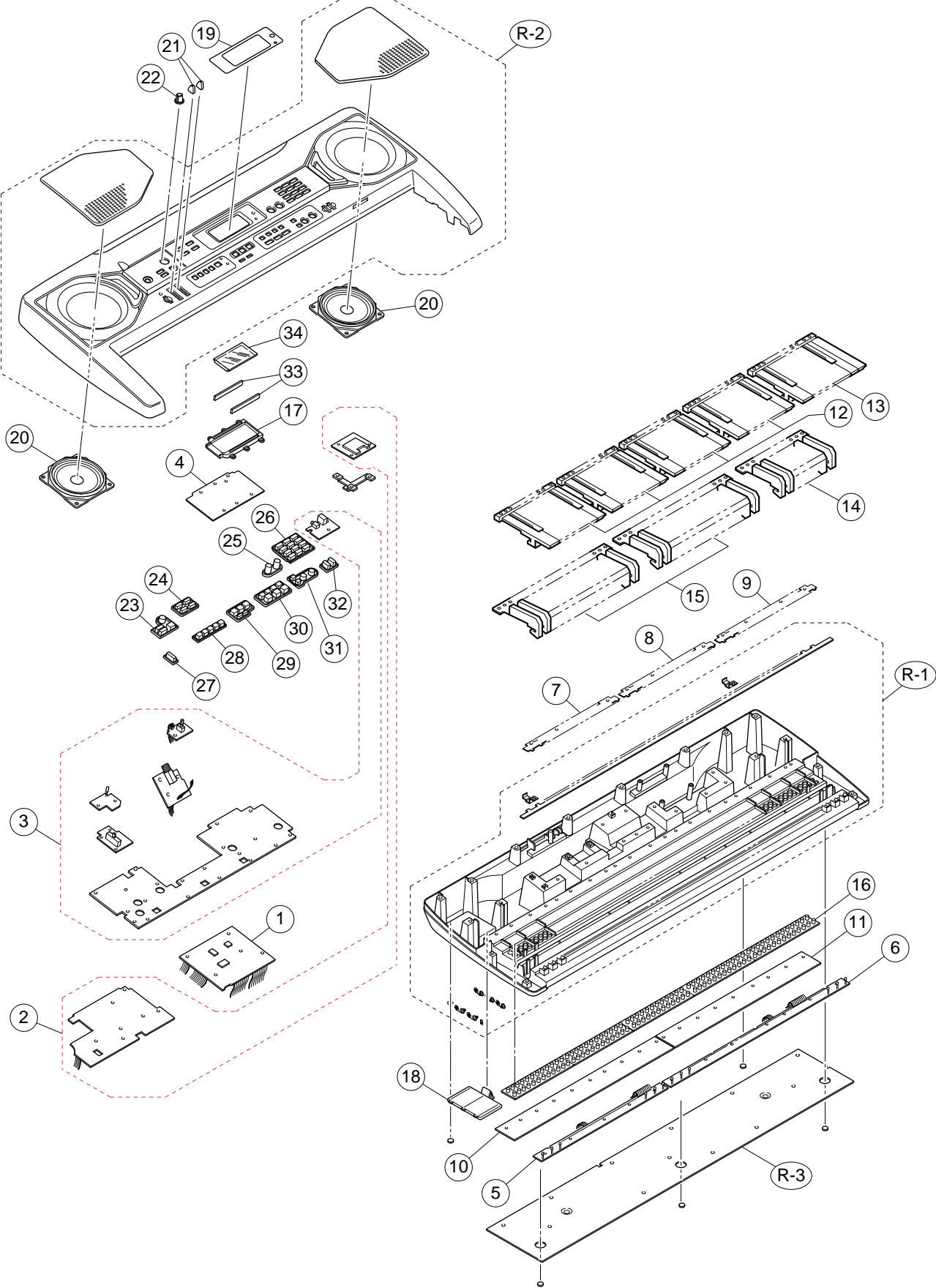
A6

A6#

B6

C7

EXPLODED VIEW



PARTS LIST

LK-90TV

Notes: This parts list does not include the cosmetic parts, which parts are marked with item No. "R-X" in the exploded view.

Contact our spare parts department if you need these parts for refurbish.

1. Prices and specifications are subject to change without prior notice.
2. As for spare parts order and supply, refer to the "GUIDEBOOK for Spare parts Supply", published separately.
3. The numbers in item column correspond to the same numbers in drawing.

N	Item	Parts code	Parts name	Specification	Q	Price Code	R	Remarks
MAIN PCB								
N	1	10163725	PCB ASSY/MA1	TK-RJM504075*001	1	DN	A	For NTSC
N	1	10163726	PCB ASSY/MA1	TK-RJM504075*002	1	DL	A	For PAL
	CN13	35022296	CONNECTOR	BM04B-SRSS-TB	1	AC	C	
	D7-D10	23901820	DIODE	1SS355TE-17	4	AA	X	
	D1-D6	79114127	DIODE	RB520S-30TE61	6	AA	X	
	IC3	69320063	IC	R1151N001C-TR	1	AN	X	
	IC14	10132440	IC	R1154H033B-T1	1	AF	X	
	IC24,25,44	21055712	IC	TC7S04FU(TE85L)	3	AB	X	
	IC36	69309991	IC	TC7SET08FU(TE85L)	2	AC	X	
	IC20	10116307	IC	TC7SZ126FU(TE85L)	1	AB	X	
	IC18	10158046	MEMORY	CY62126DV30LL55ZIT	1	AV	C	
	Q2	71015898	FET	2SJ346(TE85L)	1	AC	C	
	Q9-Q11	10116246	TRANSISTOR	2SC5714(TE12L)	3	AC	C	
	Q6,Q12-Q21	10085191	TRANSISTOR	KTA501UGR-RTK	11	AA	C	
	X2	10096483	RESONATOR	CSBFB1M00J58-R1	1	AG	C	
	X1	10133372	RESONATOR	SMD-49-12M	1	AI	C	
	RM35	27753288	R MODULE	MNR14E0ABJ103	1	AA	C	
SUB PCB								
N	2	10163727	PCB ASSY/MAA	TK-RJM503972*001	1	CX	C	
	IC202	10043474	IC	LA4635A	1	AN	C	
	IC1,IC3	21210072	IC	NJM2068DD	2	AD	C	
	J203	69325081	CONNECTOR	JY-6314-01-030	1	AB	X	
	J201	69325082	CONNECTOR	JY-6316-01-070	1	AD	X	
	L1	10057360	COIL	R2318-RB53-856396	1	BB	X	
	L2	10056228	COIL	R2318-RB53-856397	1	AB	X	
	Q8	10113773	TRANSISTOR	KTA1046Y	1	AC	X	
	Q7	10085192	TRANSISTOR	KTC2026Y	1	AC	X	
	D3,4,8	10108141	DIODE	1SS133TP	3	AA	X	
	D7	10115969	DIODE	DZ5.6BSBTP	1	AA	X	
	Q6	10116552	TRANSISTOR	KTA1267Y-AT	1	AA	X	
	Q2	10079926	TRANSISTOR	KTA1273Y-AT	1	AA	X	
	Q3,5,9	10079927	TRANSISTOR	KTC3199GR-AT	3	AA	X	
Console PCB								
N	3	10163729	PCB ASSY/CNA	TK-RJM503986*001	1	CO	C	
	CN17	35022230	CONNECTOR	SM03B-SRSS-TB	1	AC	X	
	IC1	10116463	IC	NJM14558D-#ZZZB	1	AB	X	
	J1	69325358	CONNECTOR	JY-6314-01-130	1	AA	X	
	VR2	10122622	VARIABLE R	RK09D1130C49	1	AE	X	
	VR1	27652213	VARIABLE R	RS20H121-2KB	1	AD	X	
	D1,4	10116453	LED	1154HD-B5/6.5-90	2	AB	X	
LCD PCB								
N	4	10163738	PCB ASSY/LCA1	TK-RJM503999*001	1	CG	C	
	IC1	10006502	LSI	ML9040-B02GA	1	AU	X	
	TH1	10059695	THERMISTOR	NTH5G16P33B103J07T	1	AA	X	
	VR1	27753286	VARIABLE R	EVM3SSX50B53	1	AC	X	
LED PCB								
	5	10025796	PCB ASSY/LD1M	M241351*001	1	BW	C	
	6	10025797	PCB ASSY/LD2M	M241352*001	1	BV	C	
	7	10037835	PCB ASSY/LD3M	M240428*005	1	AR	C	
	8	10025798	PCB ASSY/LD4M	M240429*005	1	BD	C	
	9	10037837	PCB ASSY/LD5M	M240430*005	1	AT	C	
	LED501-536,451-475	23701395	LED	SLR-33JTDD7	61	AC	X	

N	Item	Parts code	Parts name	Specification	Q	Price Code	R	Remarks
Keyboard unit								
	10	10171930	PCB ASSY/KY1M	TK-RJM504262*001	1	BX	C	
	11	10171931	PCB ASSY/KY2M	TK-RJM504263*001	1	BV	C	
	12	69273390	KEY SET/WHITE/CB	M340489*003	4	AY	C	
	13	69273400	KEY SET/WHITE/CS	M340489*004	1	AV	C	
	14	69251730	KEY SET/BLACK/5P	M140369-2	1	AW	C	
	15	69251720	KEY SET/BLACK/10P	M140369-1	2	BN	C	
	16	10012313	RUBBER/CONTACT	TK-M340985*1(M454)	1	BU	C	
Panel unit								
N	17	10161535	REFLECTOR	RJM503998-001V01	1	AC	C	
	18	10117676	COVER SUBASSY/BATTERY	TK-M340884*008	1	BI	B	
N	19	10161541	PLATE/DISPLAY	RJM504003-001V01	1	AF	C	
N	20	10171011	SPEAKER	S12JA13A	2	AS	B	
	21	10150775	KNOB/SLIDE	M311859-001V04	2	AA	C	
N	22	10161568	KNOB/ROTARY	RJM502503-006V01	1	AA	C	
N	23	10161577	RUBBER KEY/A	RJM503975-001V01	1	AE	C	
N	24	10161578	RUBBER KEY/B	RJM503976-001V01	1	AC	C	
N	25	10161579	RUBBER KEY/C	RJM503977-001V01	1	AB	C	
N	26	10161580	RUBBER KEY/D	RJM503978-001V01	1	AH	C	
N	27	10161581	RUBBER KEY/E	RJM503979-001V01	1	AA	C	
N	28	10161526	RUBBER KEY/F	RJM503980-001V01	1	AD	C	
N	29	10161529	RUBBER KEY/G	RJM503981-001V01	1	AE	C	
N	30	10161530	RUBBER KEY/H	RJM503982-001V01	1	AE	C	
N	31	10161531	RUBBER KEY/J	RJM503983-001V01	1	AC	C	
N	32	10161532	RUBBER KEY/K	RJM503984-001V01	1	AB	C	
N	33	10161533	CONNECTOR	RJM503996-001V01	2	AF	C	
N	34	10171015	LCD	TR3690N	1	AU	C	
Accessory								
	-	69208690	STAND/MUSIC	M311760-1	1	AL	C	
	-	10083548	BATTERY	R6UW/2STA	3	AC	C	DI only
	-	10131421	MIC	DM-302-2	1	BJ	C	Except US
N	-	10174511	CD ROM	EMI-USB-CDROM-W1	1	AM	C	
N	-	10171020	CABLE/VIDEO	CA-8101-300-A08	1	AN	C	
Refurbish								
N	R-1	10117673	CASE ASSY/MIDDLE	M141072*006	1	CP	C	
	R-2	10163728	CASE ASSY/UPPER	TK-RJM504009*001	1	CX	C	
	R-3	10119788	PLATE/LOWER	M241301-001V01	1	AV	C	

Ver.1 : Jun. 2005

Correction of the EXPLODED VIEW (P31)

CASIO COMPUTER CO.,LTD.

Overseas Service Division

6-2, Hon-machi 1-Chome
Shibuya-ku, Tokyo 151-8543, Japan