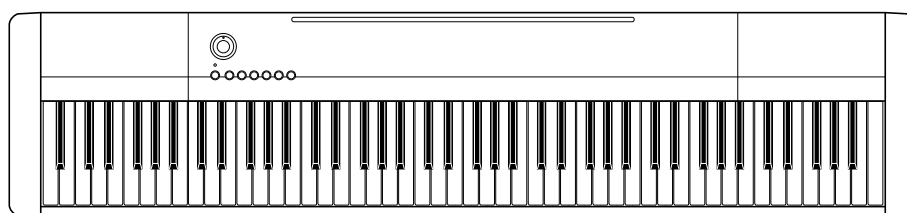


# SERVICE MANUAL & PARTS LIST

**CDP-130**

**JAN. 2014**



**CASIO®**

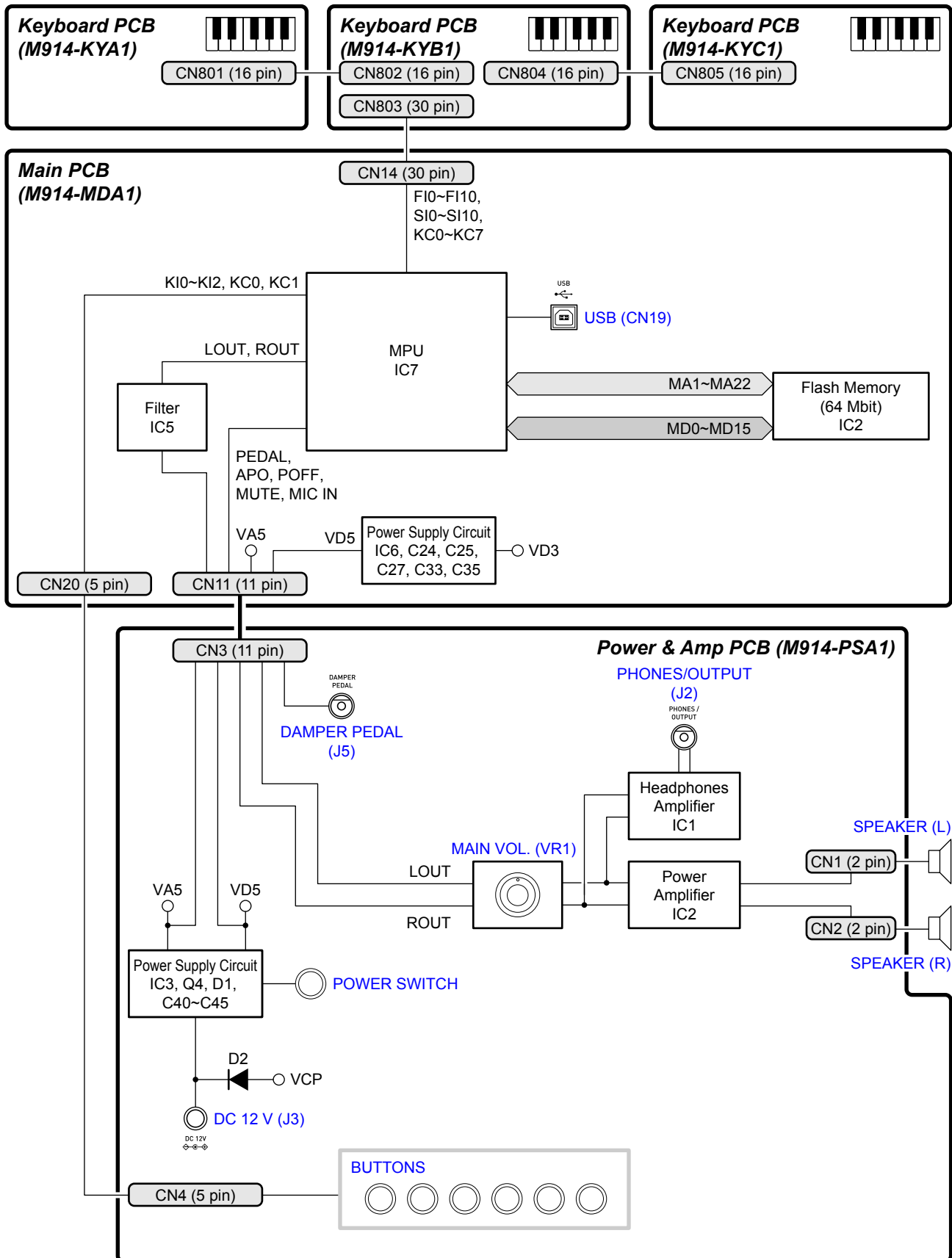
## CONTENTS

<b>SPECIFICATIONS</b> .....	<b>1</b>
<b>BLOCK AND WIRING DIAGRAM</b> .....	<b>2</b>
<b>PCB INFORMATION</b> .....	<b>3</b>
<b>CIRCUIT DESCRIPTION</b> .....	<b>4</b>
<b>PRINTED CIRCUIT BOARDS</b> .....	<b>6</b>
<b>DISASSEMBLY</b> .....	<b>9</b>
<b>DIAGNOSTIC PROGRAM</b> .....	<b>25</b>
<b>EXPLODED VIEW</b> .....	<b>28</b>
<b>PARTS LIST</b> .....	<b>30</b>
<b>SCHEMATIC DIAGRAMS</b> .....	<b>35</b>

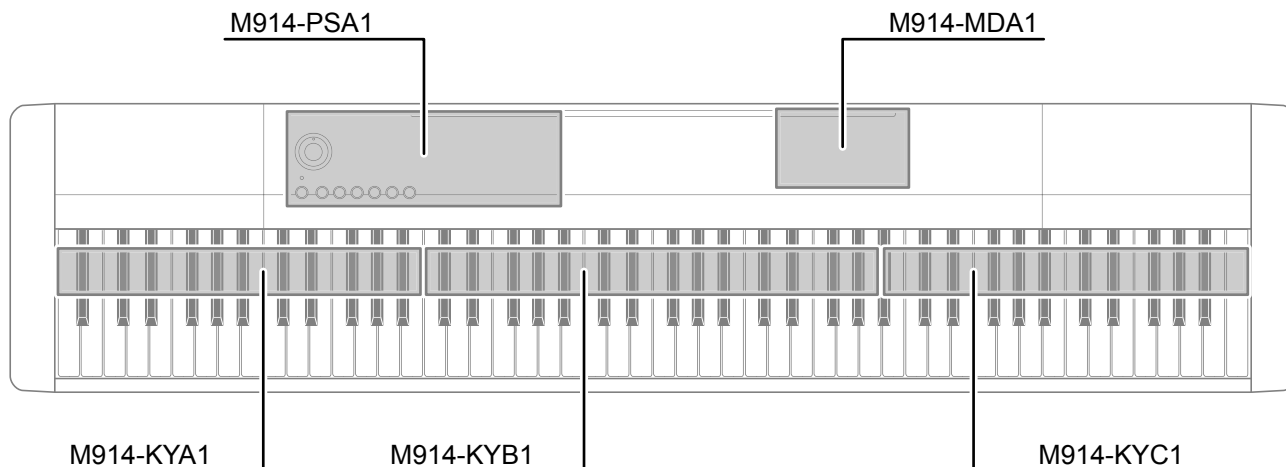
## SPECIFICATIONS

<b>Keyboard</b>	88-key piano keyboard
Touch Response	3 types, Off
<b>Maximum Polyphony</b>	48 notes (24 for certain tones)
<b>Tones</b>	
Built-in Tones	10; with layer
<b>Hall</b>	On, Off
<b>Reverb</b>	1 to 10, Off
<b>Chorus</b>	1 to 5, Off
<b>Demo Songs</b>	5 songs
<b>Metronome</b>	
Beats	0, 1, 2, 3, 4, 5, 6, 7, 8, 9
Tempo Range	30 to 255
<b>Other Functions</b>	
Transpose	±1 octaves (-12 to +12 semitones)
Tuning	A4 = 415.5 to 465.9 Hz (Initial Default: 440.0 Hz)
<b>MIDI</b>	16 multi-timbre received, GM Level 1 standard
<b>Inputs/Outputs</b>	
USB port	TYPE B
Damper Pedal jack	Standard jack
Phones/Output jack	Stereo standard jack
	Output Impedance: 3 Ω, Output Voltage: 1.5 V (RMS) MAX
<b>Power Jack</b>	12 V DC
<b>Power Supply</b>	
AC Adaptor	AD-A12150LW
	• The AC adaptor can be used safely in areas up to 4,000 meters above sea level.
Auto Power Off	30 minutes after last key operation, Auto Power Off can be disabled.
<b>Speakers</b>	(12 cm × 6 cm oval) × 2
Output	8 W + 8 W
<b>Power Consumption</b>	12 V --- 18 W
<b>Dimensions</b>	132.2 × 28.6 × 12.9 cm (52 1/16 × 11 1/4 × 5 1/16 inch)
<b>Weight</b>	Approximately 10.8 kg (23.8 lbs)

## BLOCK AND WIRING DIAGRAM



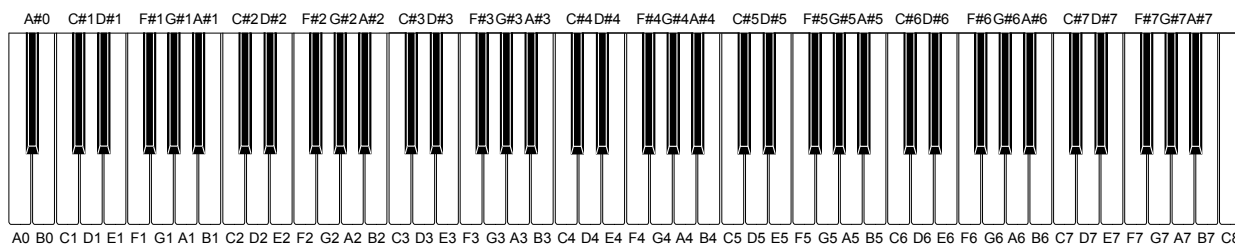
## PCB INFORMATION



Parts Name	PCB Name	Functions
<b>Main PCB</b>		
PCB UNIT/MAIN	M914-MDA1	MPU, Flash memory, Power supply circuit, Filter, USB port
<b>Power &amp; Amp PCB</b>		
PCB UNIT/POWER & AMP	M914-PSA1	Power supply circuit, Power amplifier, Headphones amplifier, Buttons, Power switch, Main volume, DC 12 V terminal, DAMPER PEDAL jack, PHONES/OUTPUT jack
<b>Keyboard PCB</b>		
PCB UNIT/KEYBOARD	M914-KYA1	Keyboard
	M914-KYB1	
	M914-KYC1	

# CIRCUIT DESCRIPTION

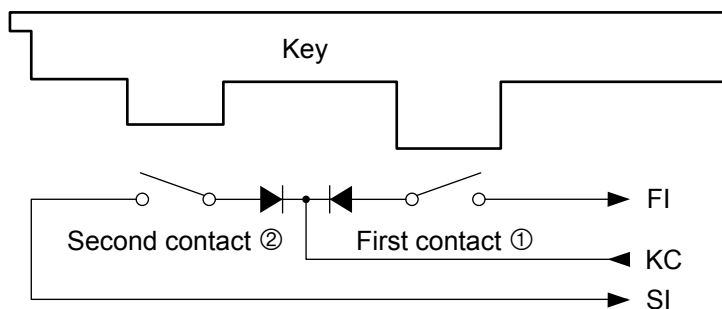
## ■ Nomenclature of Keys



## ■ Key Matrix

Each key has two contacts, the first contact ① and second contact ②.

[NOTE] The diagram below illustrates how the contacts work.



	KC0	KC1	KC2	KC3	KC4	KC5	KC6	KC7
FI0	A0①	A0#①	B0①	C1①	C1#①	D1①	D1#①	E1①
SI0	A0②	A0#②	B0②	C1②	C1#②	D1②	D1#②	E1②
FI1	F1①	F1#①	G1①	G1#①	A1①	A1#①	B1①	C2①
SI1	F1②	F1#②	G1②	G1#②	A1②	A1#②	B1②	C2②
FI2	C2#①	D2①	D2#①	E2①	F2①	F2#①	G2①	G2#①
SI2	C2#②	D2②	D2#②	E2②	F2②	F2#②	G2②	G2#②
FI3	A2①	A2#①	B2①	C3①	C3#①	D3①	D3#①	E3①
SI3	A2②	A2#②	B2②	C3②	C3#②	D3②	D3#②	E3②
FI4	F3①	F3#①	G3①	G3#①	A3①	A3#①	B3①	C4①
SI4	F3②	F3#②	G3②	G3#②	A3②	A3#②	B3②	C4②
FI5	C4#①	D4①	D4#①	E4①	F4①	F4#①	G4①	G4#①
SI5	C4#②	D4②	D4#②	E4②	F4②	F4#②	G4②	G4#②
FI6	A4①	A4#①	B4①	C5①	C5#①	D5①	D5#①	E5①
SI6	A4②	A4#②	B4②	C5②	C5#②	D5②	D5#②	E5②

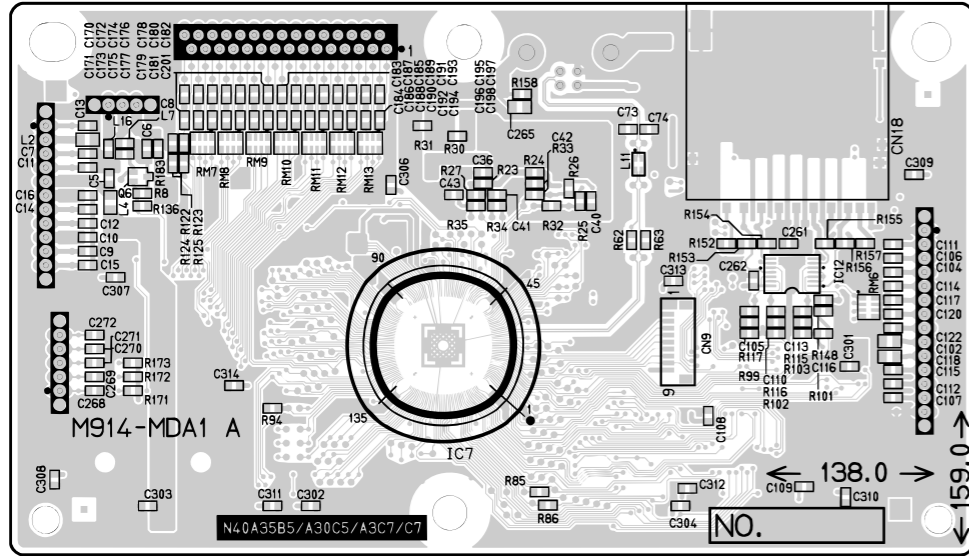
	KC0	KC1	KC2	KC3	KC4	KC5	KC6	KC7
FI7	F5①	F5#①	G5①	G5#①	A5①	A5#①	B5①	C6①
SI7	F5②	F5#②	G5②	G5#②	A5②	A5#②	B5②	C6②
FI8	C6#①	D6①	D6#①	E6①	F6①	F6#①	G6①	G6#①
SI8	C6#②	D6②	D6#②	E6②	F6②	F6#②	G6②	G6#②
FI9	A6①	A6#①	B6①	C7①	C7#①	D7①	D7#①	E7①
SI9	A6②	A6#②	B6②	C7②	C7#②	D7②	D7#②	E7②
FI10	F7①	F7#①	G7①	G7#①	A7①	A7#①	B7①	C8①
SI10	F7②	F7#②	G7②	G7#②	A7②	A7#②	B7②	C8②

## ■ Button Matrix

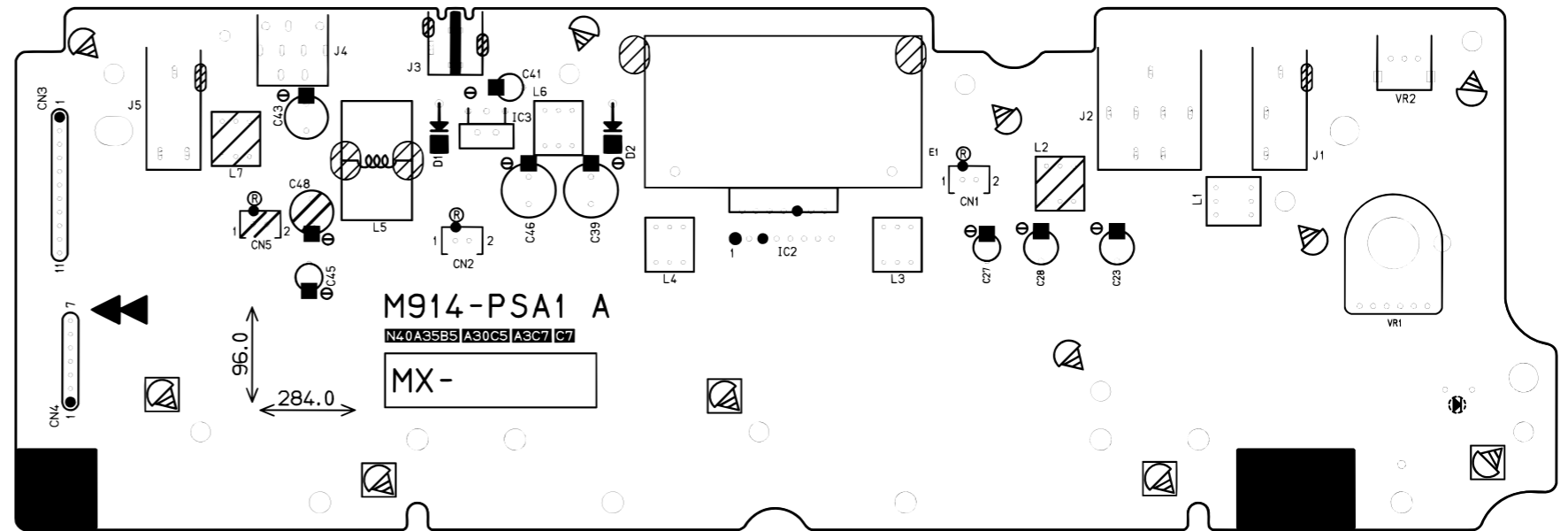
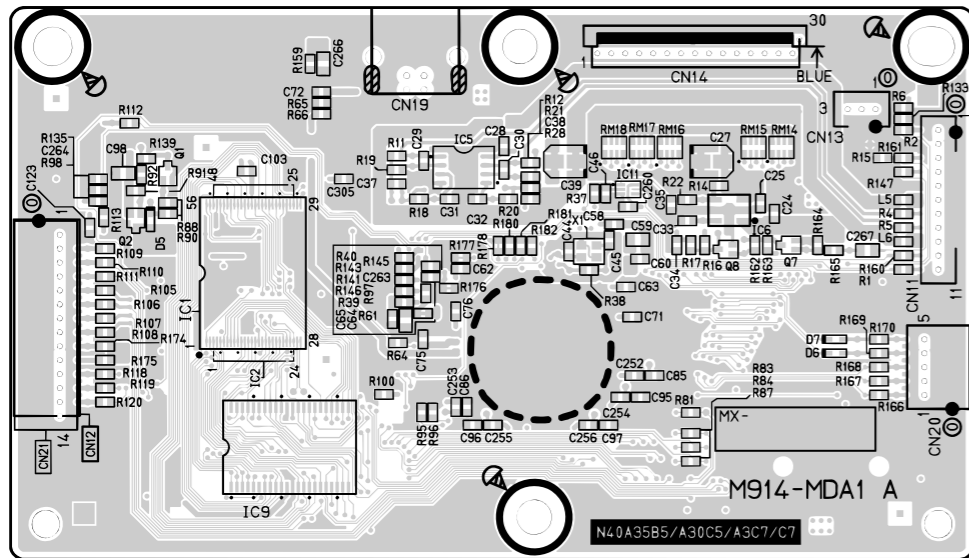
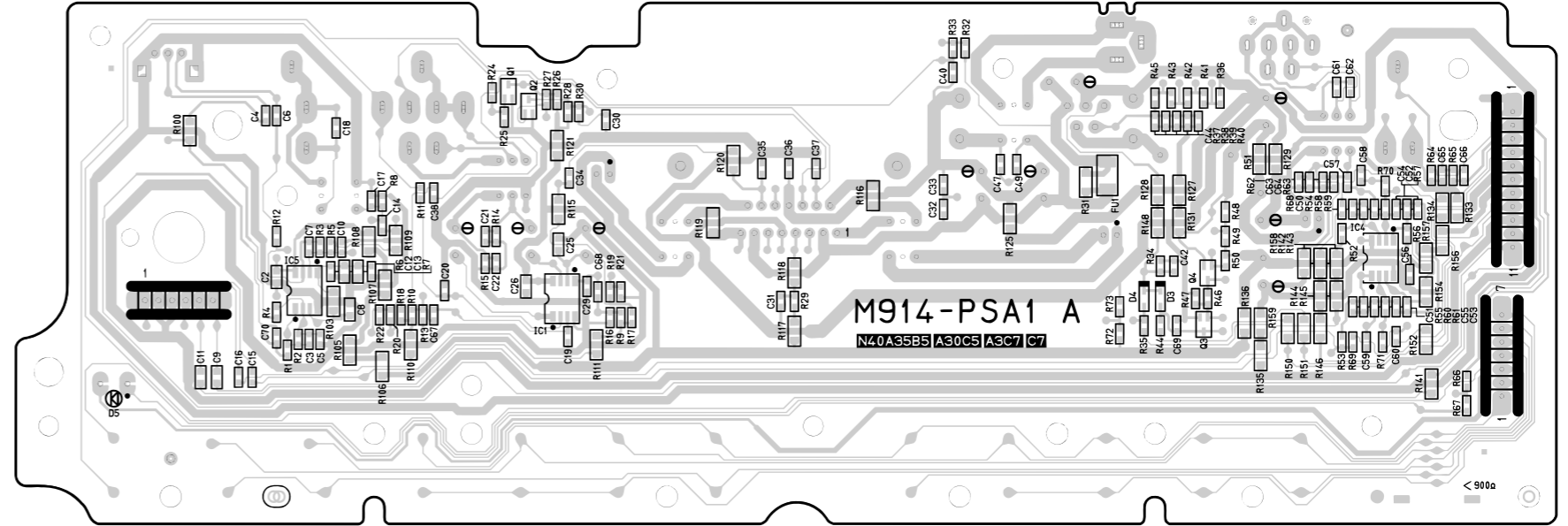
	SWO0	SWO1
SWI3	HALL	GRAND PIANO 1
SWI4	FUNCTION	METRONOME
SWI5	DEMO	ELEC PIANO 1

PRINTED CIRCUIT BOARDS

Main PCB: M914-MDA1

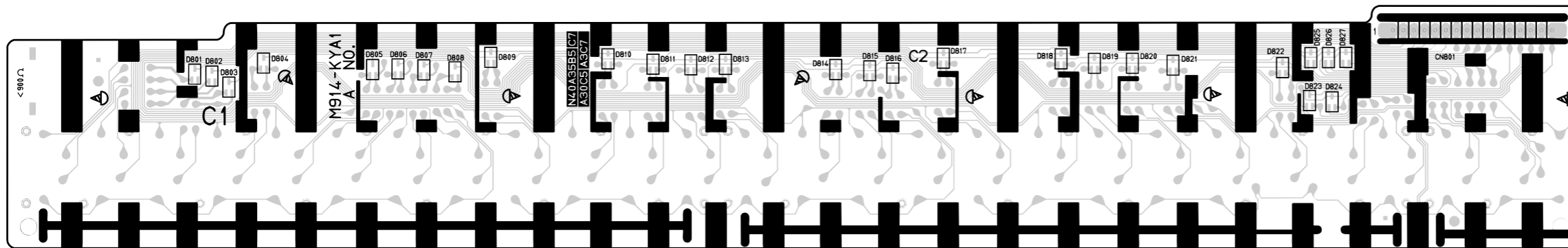
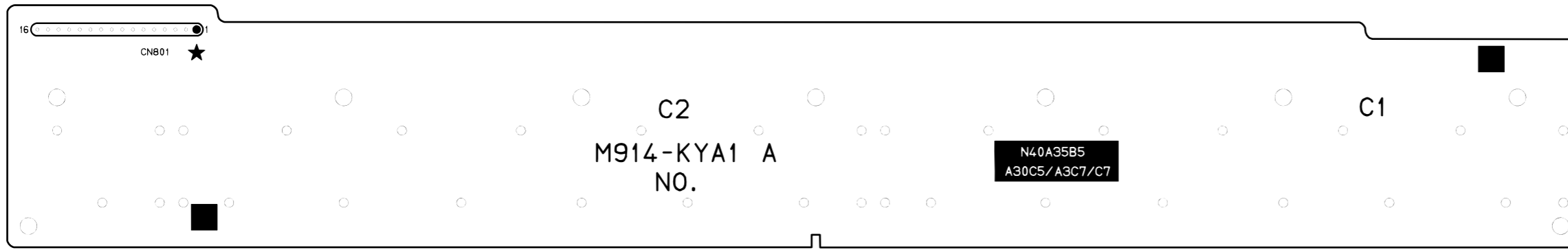


Power & Amp PCB: M914-PSA1

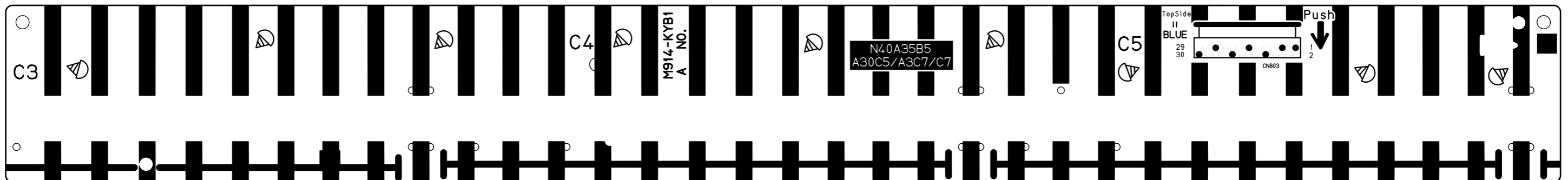
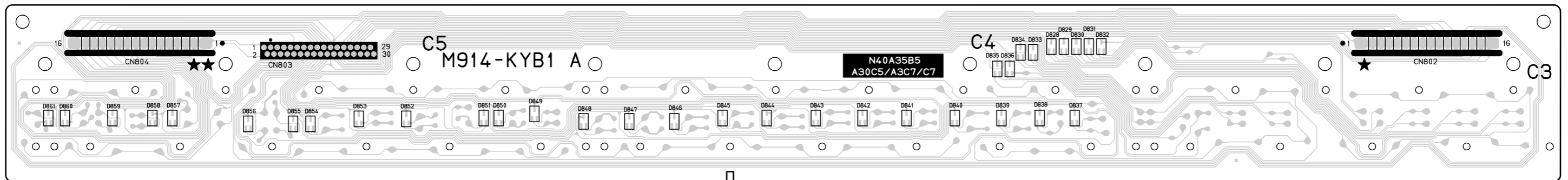




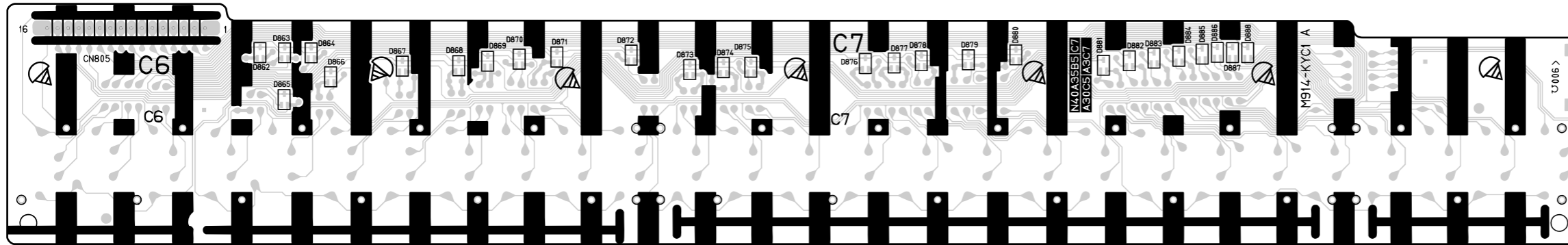
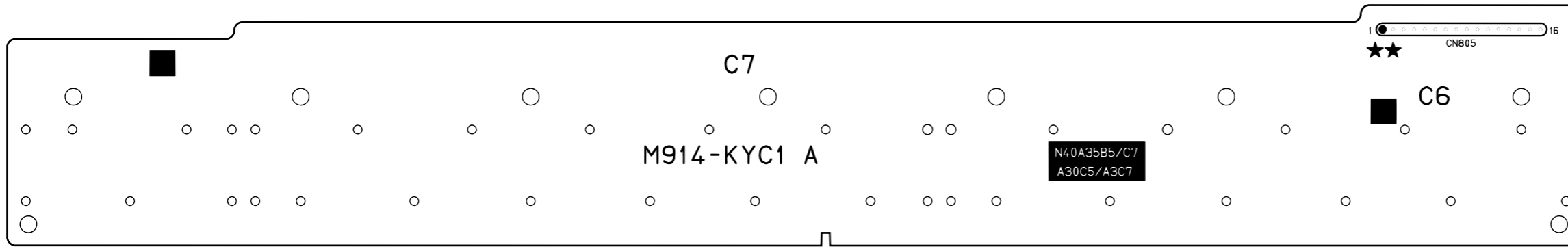
Keyboard PCB: M914-KYA1



Keyboard PCB: M914-KYB1



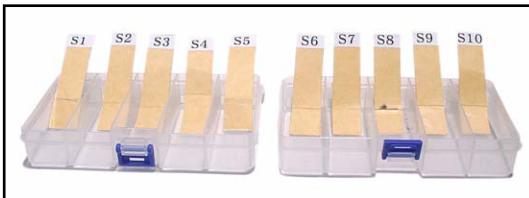
Keyboard PCB: M914-KYC1



## DISASSEMBLY

### ■ About Repair

- The figures in this chapter show CDP-120, so the components used may differ from CDP-130.
- To avoid damages to the instrument and floor, lay the instrument on a mattress or blanket before starting disassembling.
- There are several kinds of screws. Be sure to use the correct type of screws when reassembling. It is advisable to sort the screws as shown below after removing them.

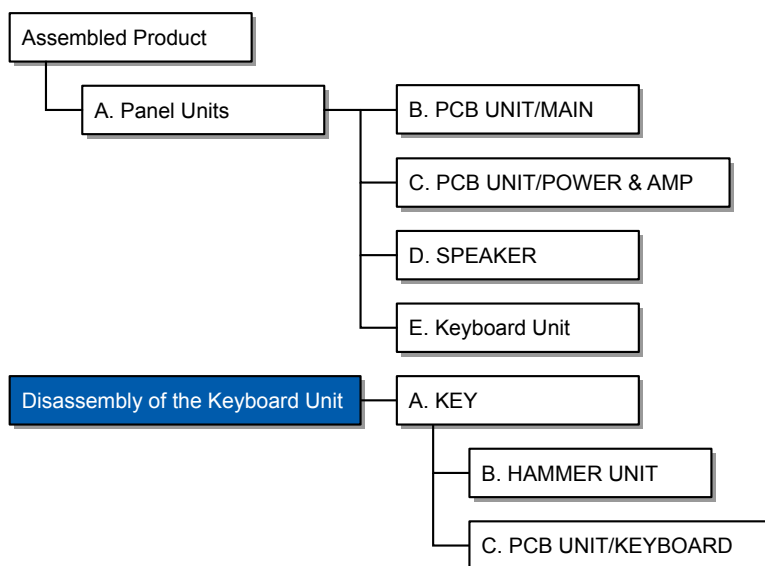


- If a screw cap is attached to the screw, remove it. Be sure to reattach the screw cap when assembling.
- Check how cables are wired before removing cables. Be sure to wire the cables in the same manner as they were before disassembly.
- In case cables are secured with cable ties, securing bands, clips, or tapes, remove them first. Be sure to secure the cables in place in the same manner as they were before disassembly.

### ■ Before Starting Repair or Servicing

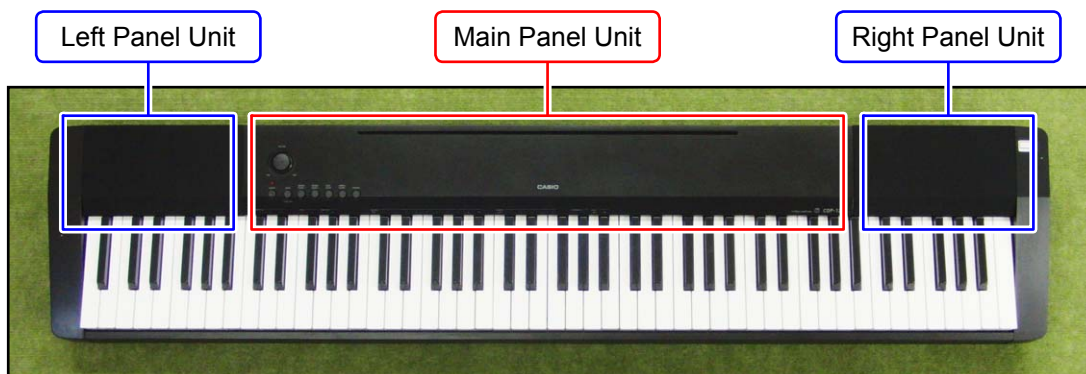
- Remove the AC adaptor, AC cord or batteries.
- Remove accessories such as the music stand.

### ■ Flowchart



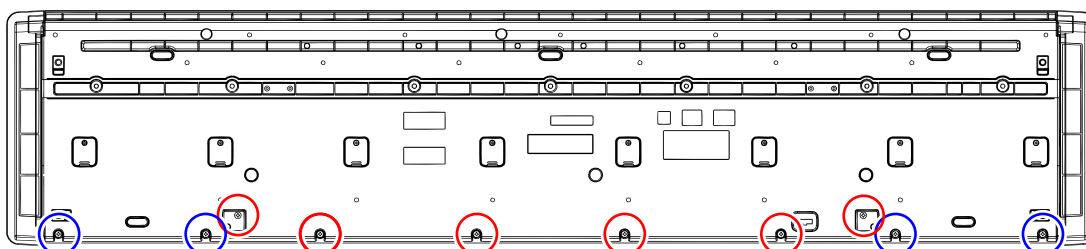
## ■ Disassembly Procedure

### A. Remove the Panel Units



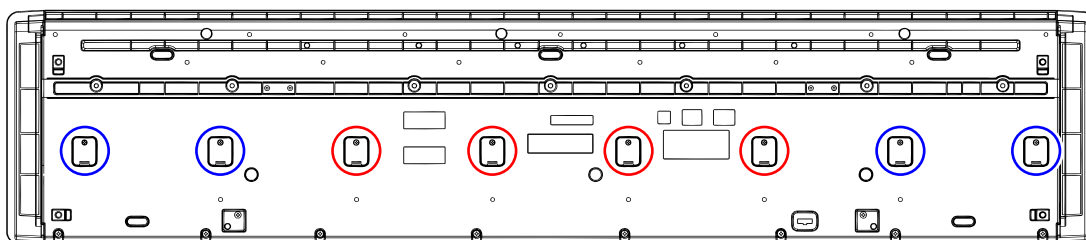
A-1. Undo 10 or six screws on the bottom surface.

**[NOTE]** To remove only the Main Panel Unit, undo six screws indicated with red circles in the figure below.



A-2. Undo eight or four screws and then remove eight or four LOWER COVER.

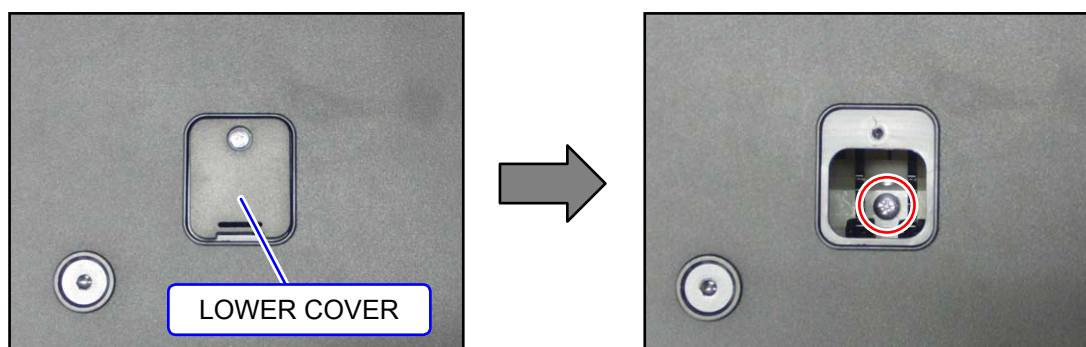
**[NOTE]** To remove only the Main Panel Unit, undo four screws and remove the four LOWER COVER indicated with red circles in the figure below.



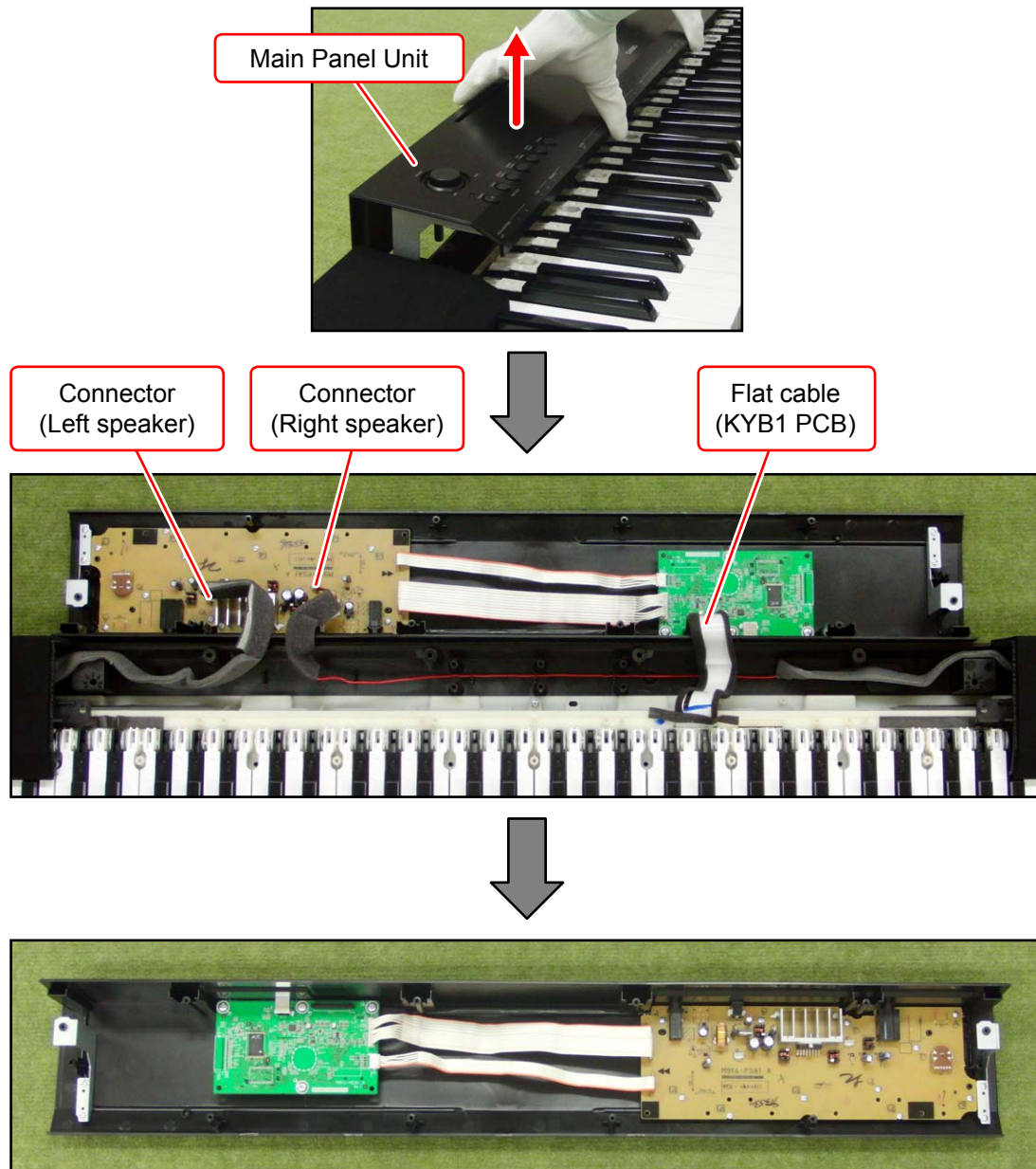
A-3. You will see a screw inside when you remove an LOWER COVER. Undo and remove the screw through each opening (eight or four screws in total).

**[NOTE]** Do not drop the screws inside the unit.

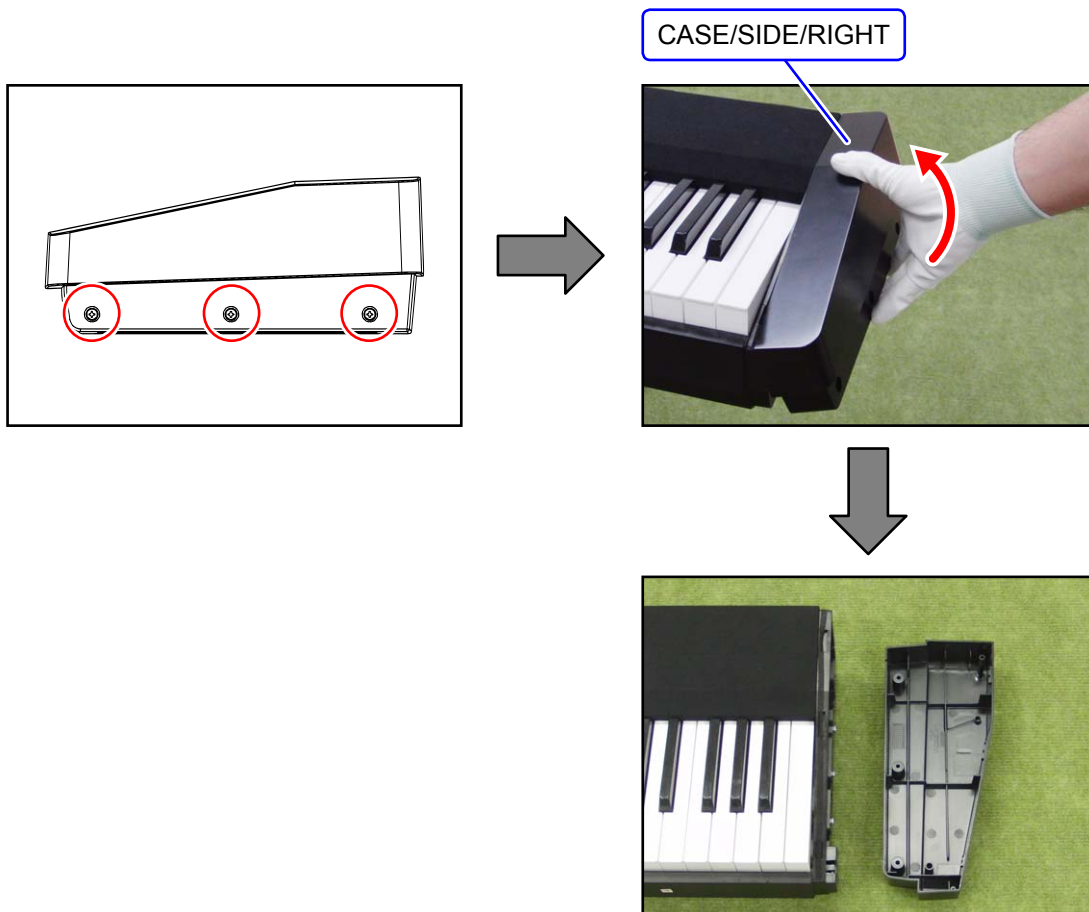
**[NOTE]** Do not touch the hammer with the screwdriver while loosening the screws.



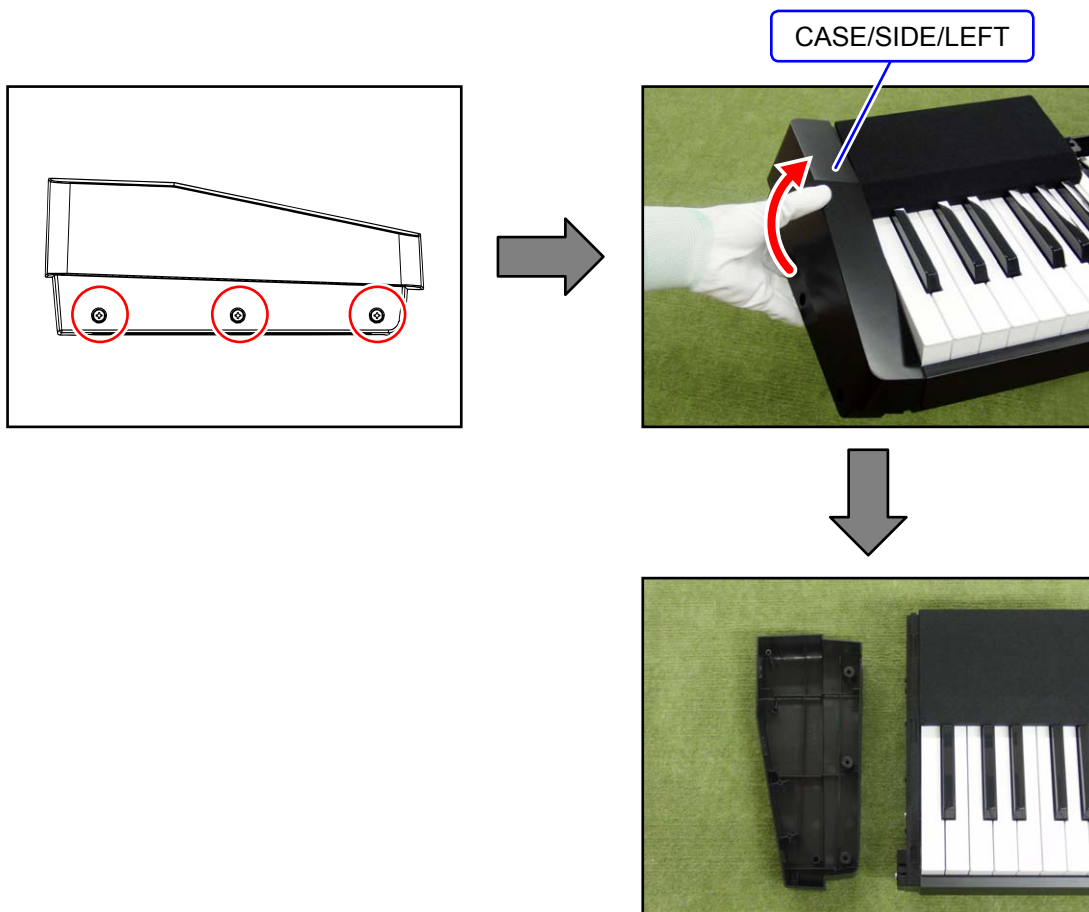
- A-4. Place the digital piano with keyboard facing up.
- A-5. Lift the Main Panel Unit and turn it over.  
**[NOTE]** The Main Panel Unit is connected to the lower case with the cables. Use caution when turn over the Main Panel Unit.
- A-6. Unlock the connector and disconnect the flat cable.
- A-7. Disconnect two connectors and then remove the Main Panel Unit.



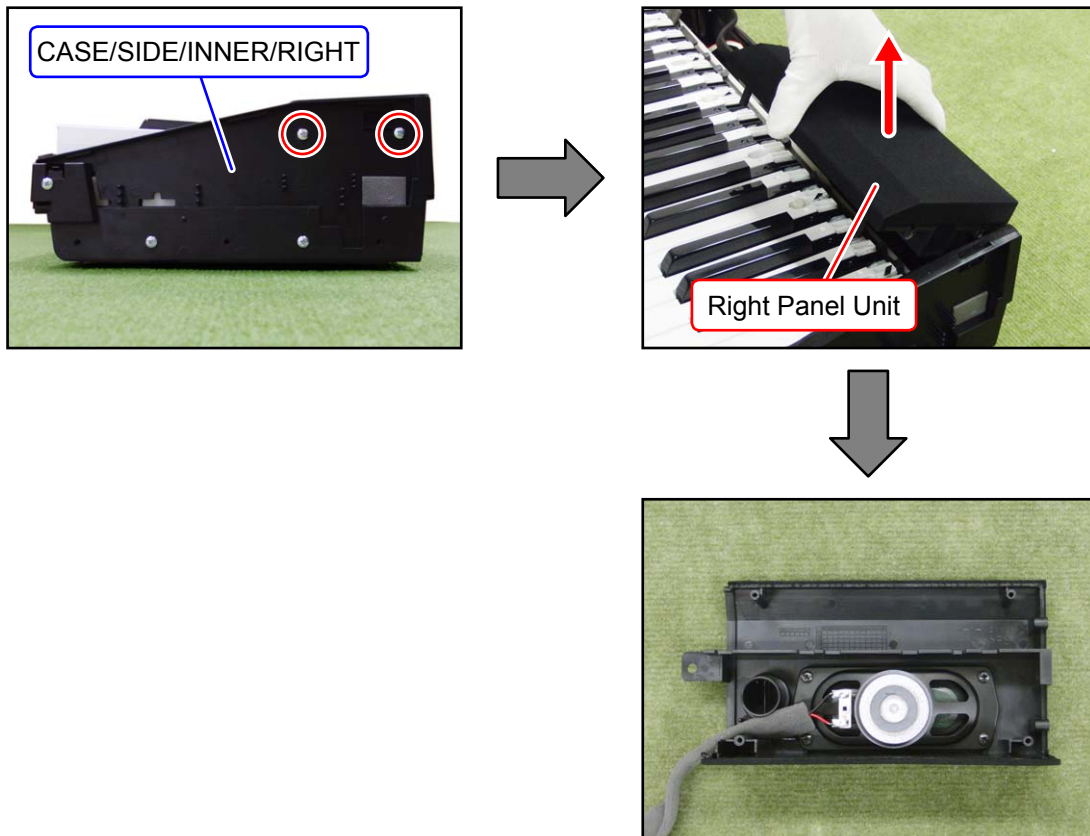
A-8. Undo three screws on the CASE/SIDE/RIGHT and then remove the CASE/SIDE/RIGHT.



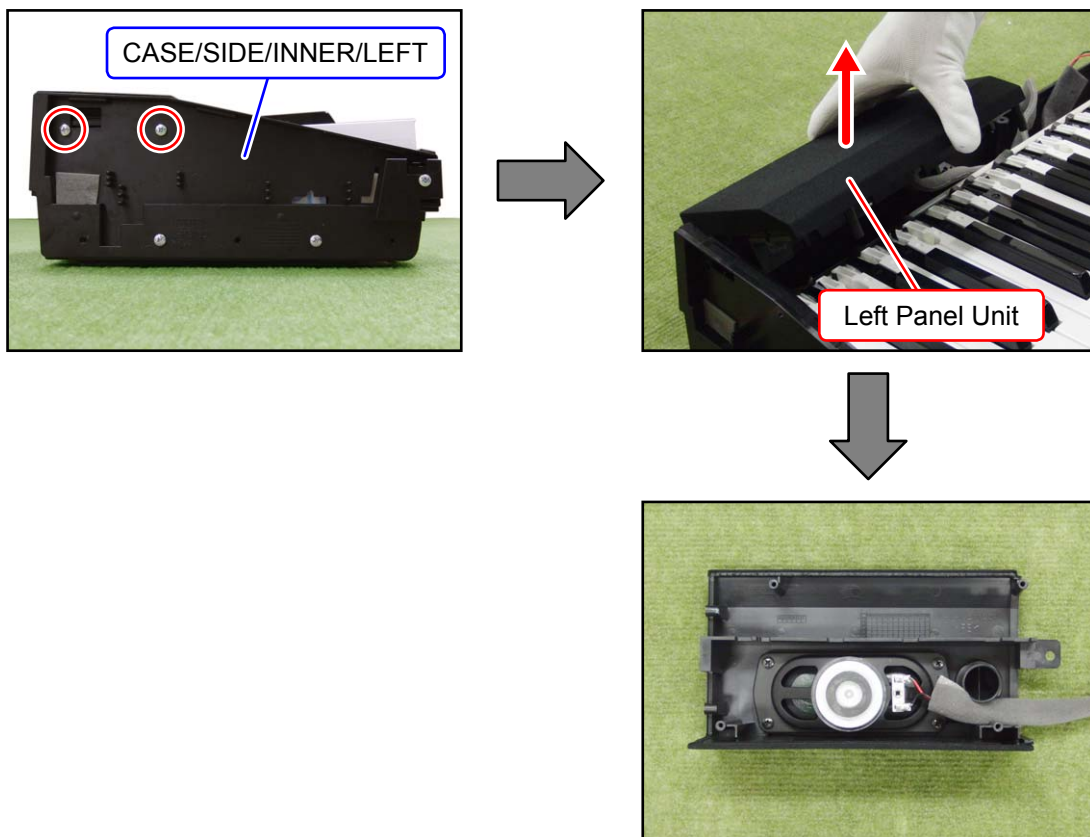
A-9. Undo three screws on the CASE/SIDE/LEFT and then remove the CASE/SIDE/LEFT.



A-10. Undo two screws on the CASE/SIDE/INNER/RIGHT and then remove the Right Panel Unit.



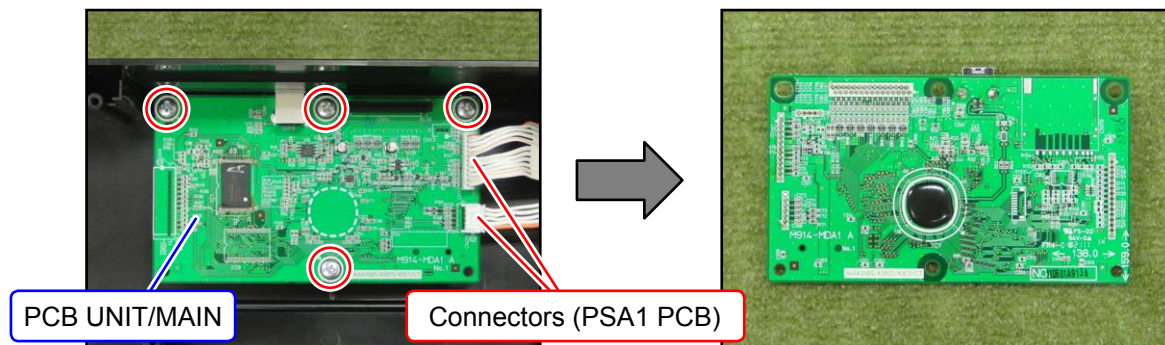
A-11. Undo two screws on the CASE/SIDE/INNER/LEFT and then remove the Left Panel Unit.



## B. Remove the PCB UNIT/MAIN

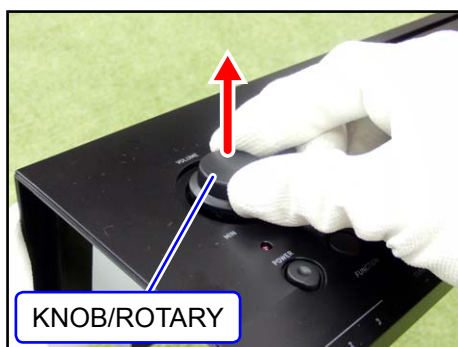
B-1. Disconnect two connectors.

B-2. Undo four screws and then remove the PCB UNIT/MAIN.

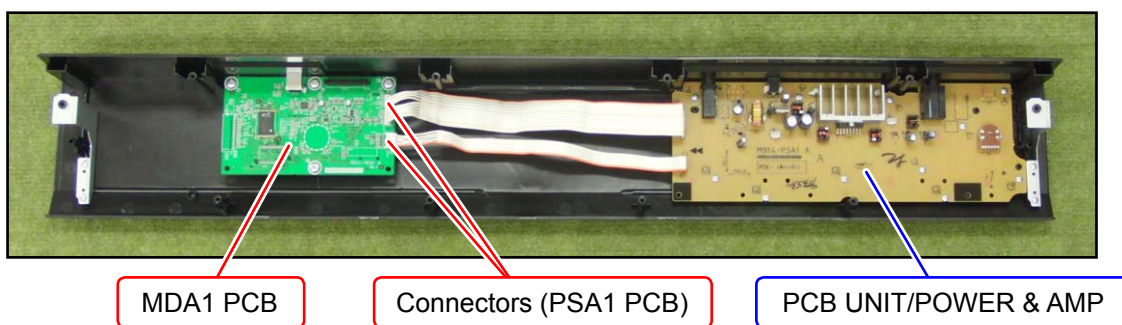


## C. Remove the PCB UNIT/POWER & AMP

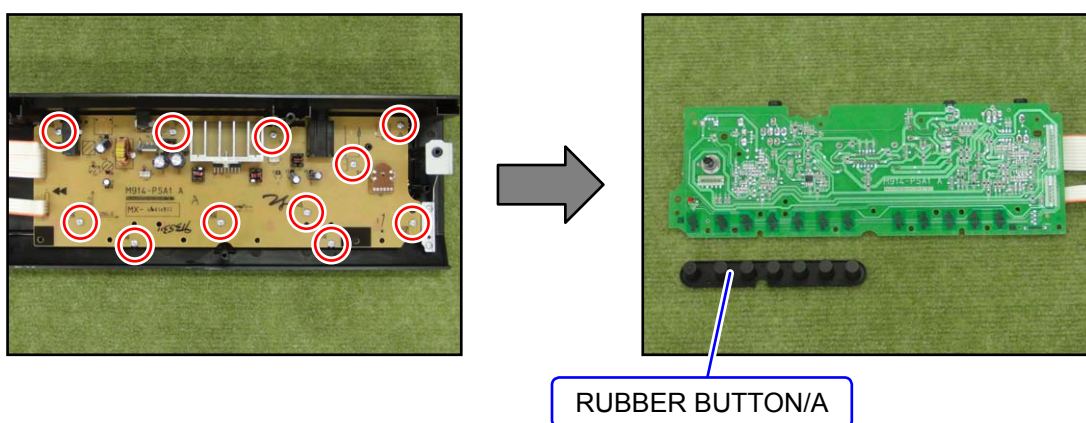
C-1. Remove the KNOB/ROTARY.



C-2. Disconnect two connectors from the MDA1 PCB.



C-3. Undo 11 screws and then remove the PCB UNIT/POWER & AMP and RUBBER BUTTON/A.



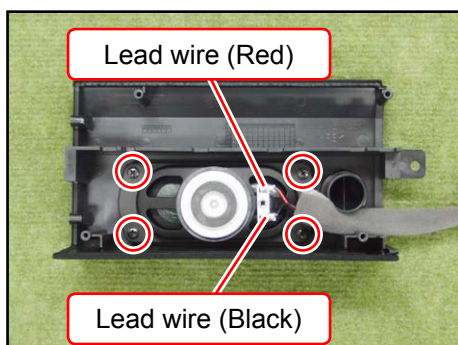


## D. Remove the SPEAKER

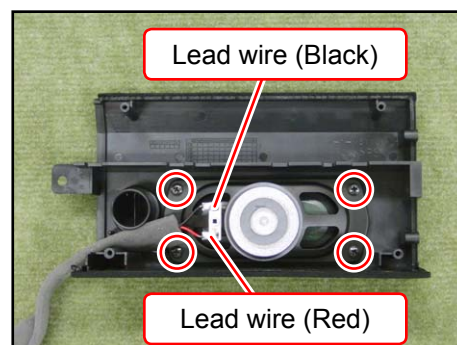
D-1. Unsolder two lead wires.

D-2. Undo four screws and then remove the SPEAKER.

<Left speaker>

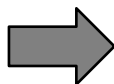
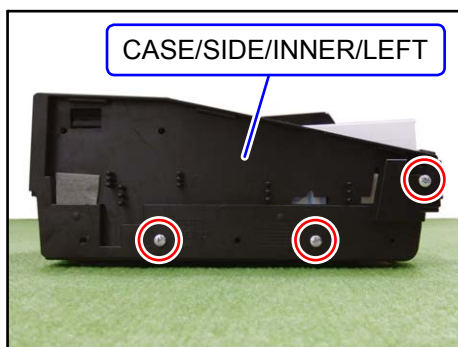


<Right speaker>

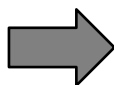
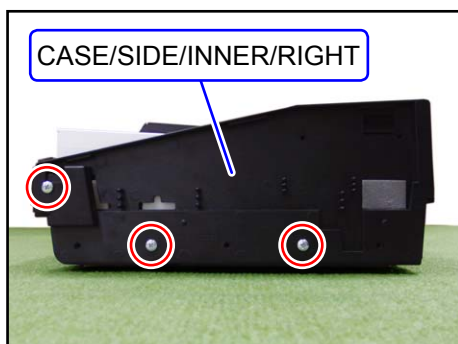


## E. Remove the Keyboard Unit

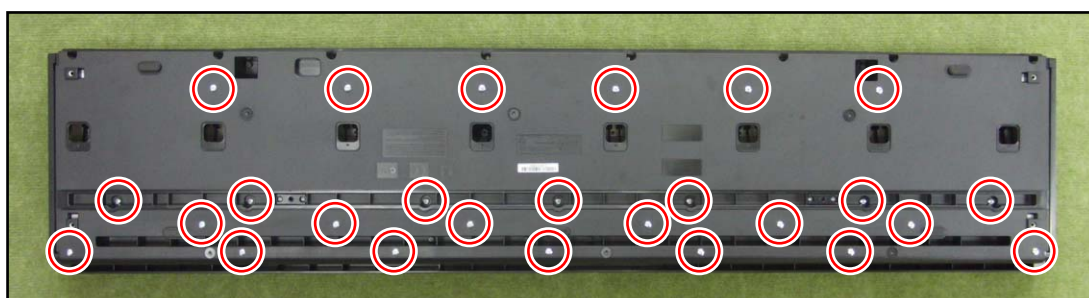
E-1. Undo three screws and then remove the CASE/SIDE/INNER/LEFT.



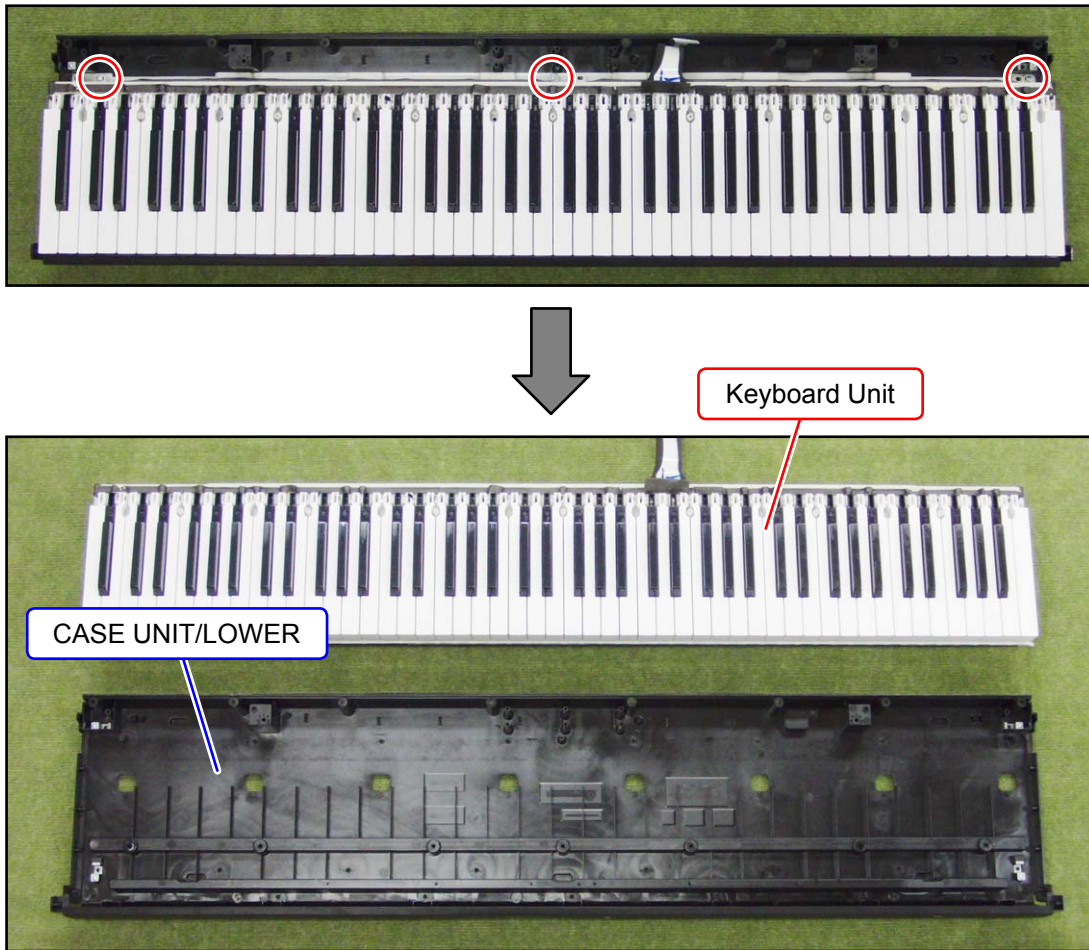
E-2. Undo three screws and then remove the CASE/SIDE/INNER/RIGHT.



E-3. Undo 26 screws.



E-4. Undo three screws and then remove the Keyboard Unit from the CASE UNIT/LOWER.



## ■ Disassembly of the Keyboard Unit

### A. Remove the KEY

#### <Removing the keys>

- To remove the key, you will need two of the tools described below.
- Before removing a black key, you must first remove both white keys on either side of the black key.
- White keys may be removed with the same procedures as removing black keys.

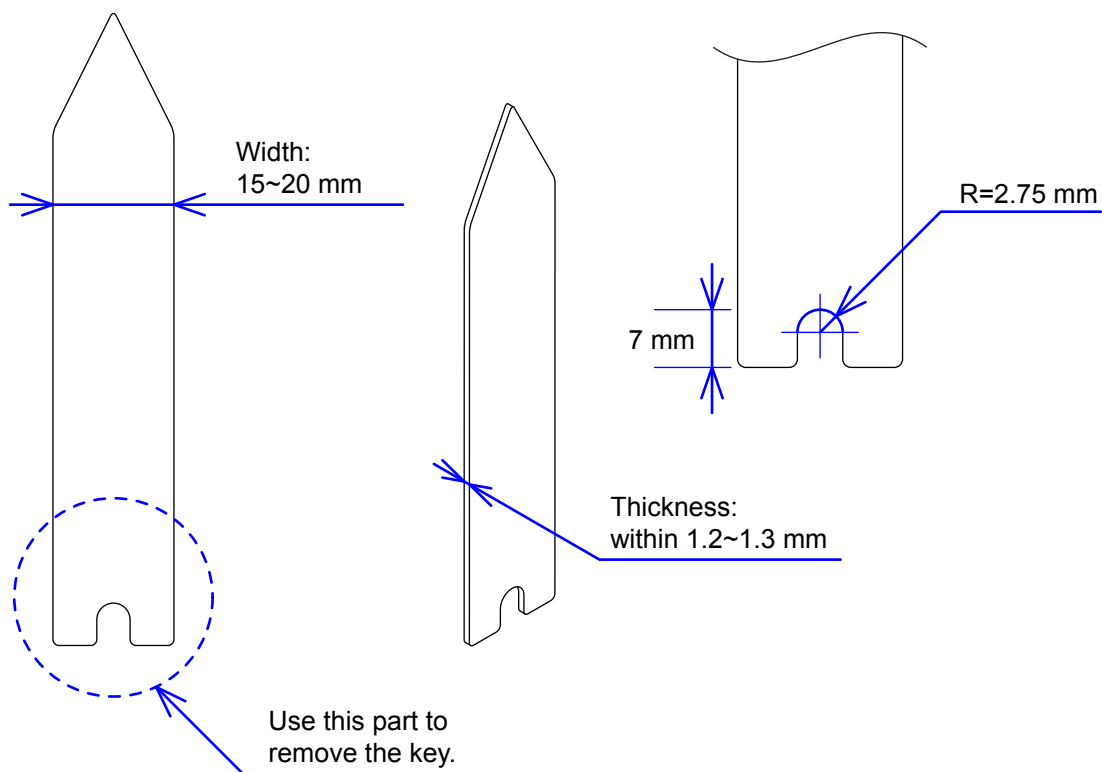
#### <Tool>

The tool used in the photos in this section was converted from a gardening ID tag. The size and shape of an ID tag accord to the dimensions below.

#### <Note on shaping an ID tag>

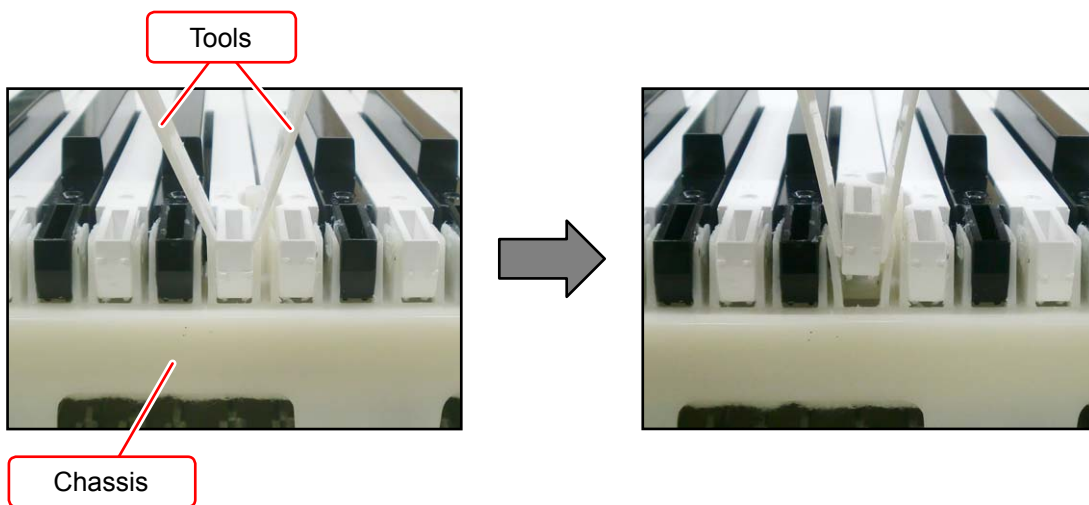
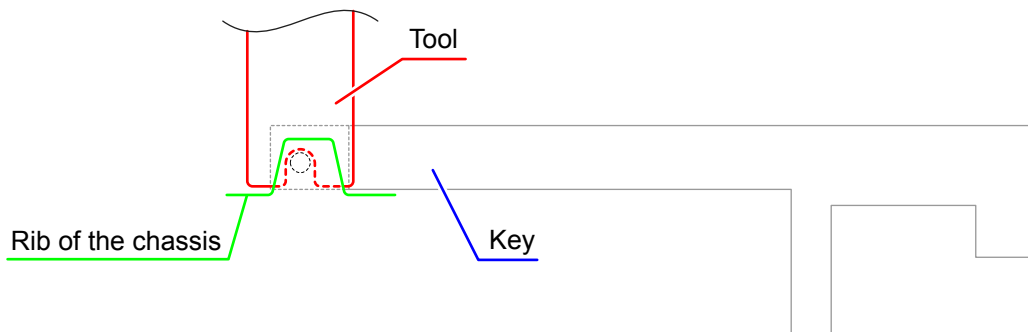
The thickness of the tool must be within 1.2~1.3 mm. If the tool is too thin, removing keys become difficult. If the tool is too thick, it may damage the rib of the chassis.

#### <Tool dimensions>



- A-1. Insert the two tools between the rib of the chassis and a key.
- A-2. When the tools are inserted to a certain depth, the key begins to be lifted and can then be removed.

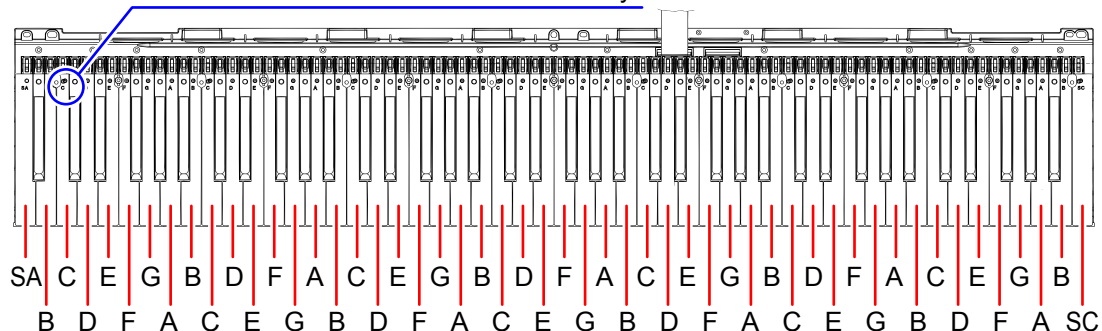
<Cross-section image>



### <Installing the keys>

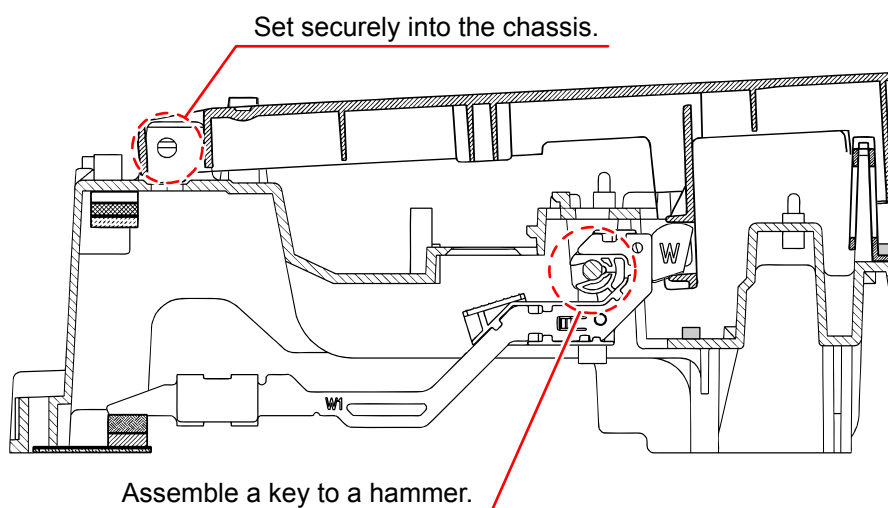
- Refer to the illustration below for the location of each white key.
- Be sure to install each key at its designated location.
- All black keys are the same. A black key may be installed at any correct black-key location.

A code is indicated at the foot of each key.



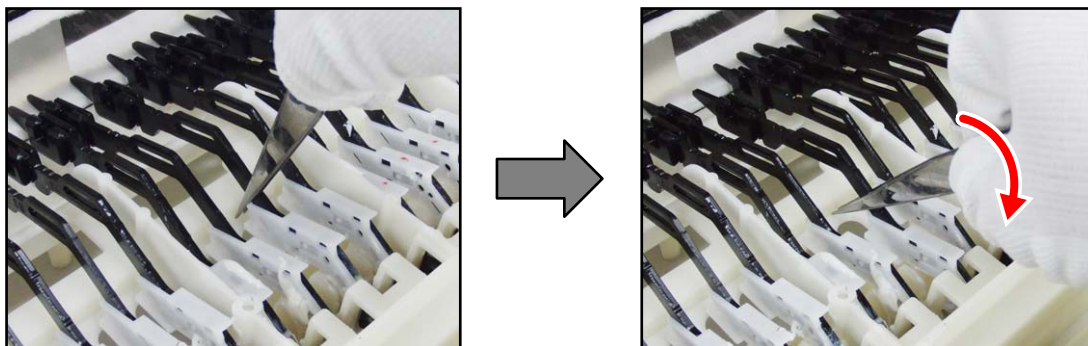
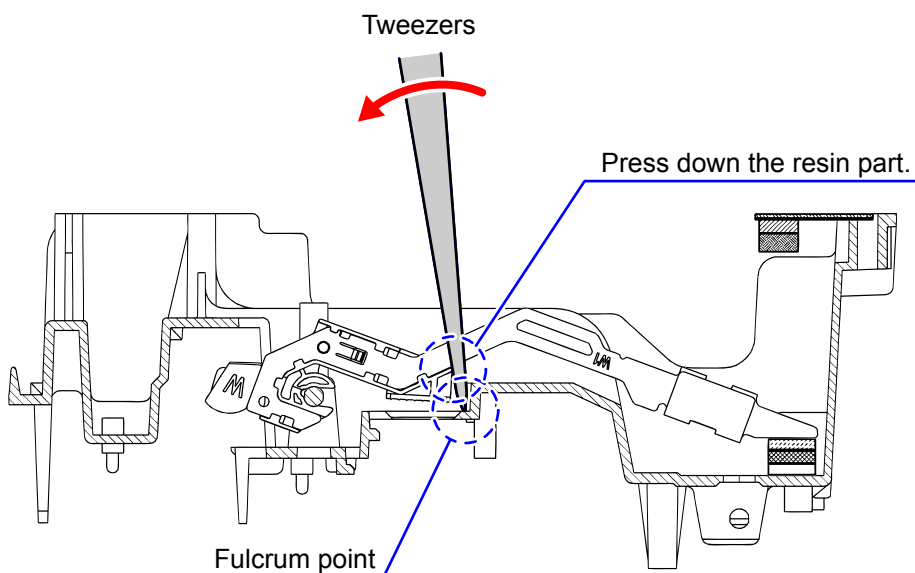
Install a black key before installing the white keys on either of its sides. Follow the same procedures below to install a black or white key.

- (1) Assemble a key to a hammer.
- (2) Press the protrusion of the chassis firmly into the keyhole.
- (3) Press the key to see if it moves properly.



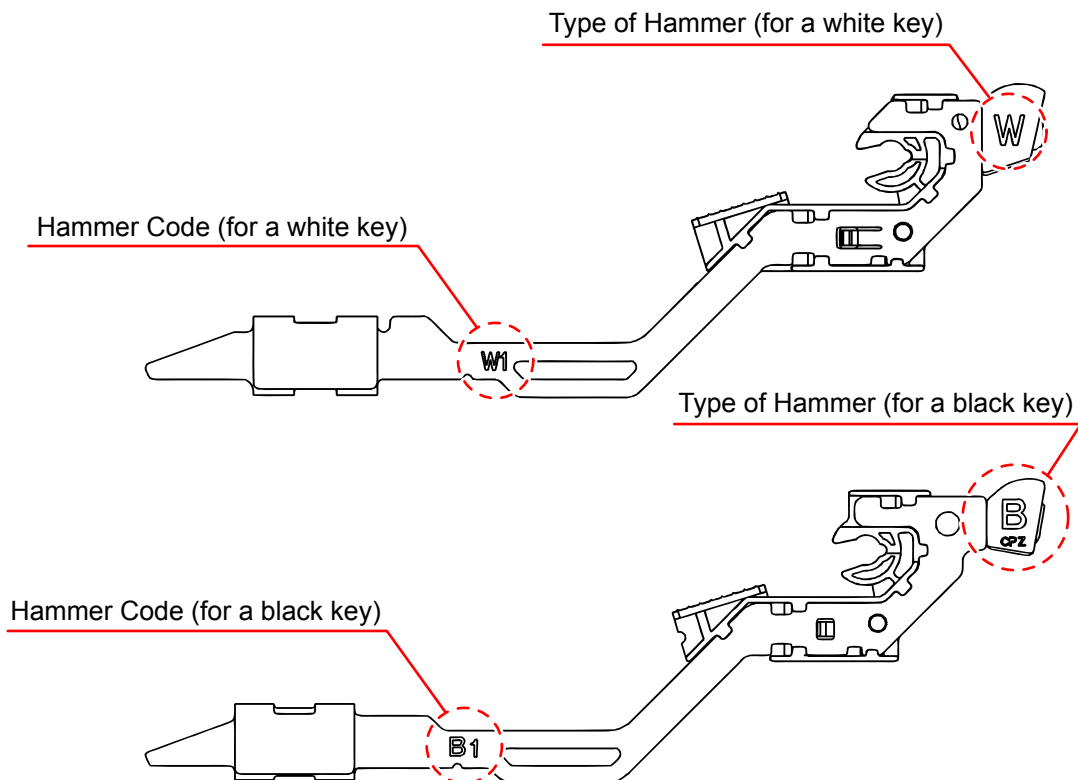
## B. Remove the HAMMER UNIT

- B-1. Place the chassis upside down so that the hammers are visible.
- B-2. Press the chassis with the tip of tweezers.
- B-3. While catching a hammer with tweezers, set the tweezers against the resin part of the chassis.
- B-4. Using the chassis-tweezer contact as a fulcrum point, press down against the resin part in the direction of the red arrow in the illustration below, and then disengage the hammer.



**<Kinds of hammers>**

There are several kinds of hammers. The type of a hammer may be identified by the code engraved on it.

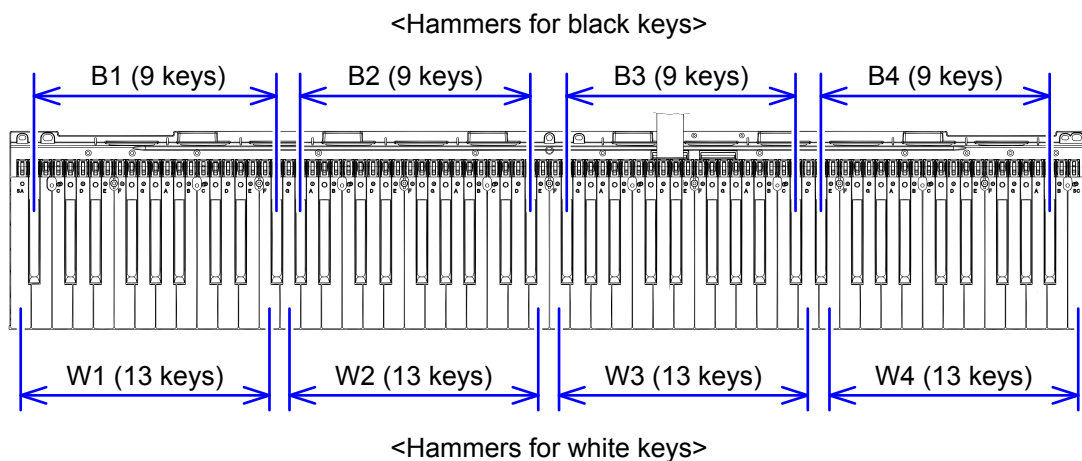


Type of Hammer: "W" for a white key, "B" for a black key.

Hammer Code: The hammers for white keys are coded W1, W2, W3, and W4.  
The hammers for black keys are coded B1, B2, B3, and W4.

**<Location to install the hammer>**

A hammer must be installed at the correct location according to its type. The combination of hammers and keys are shown below.



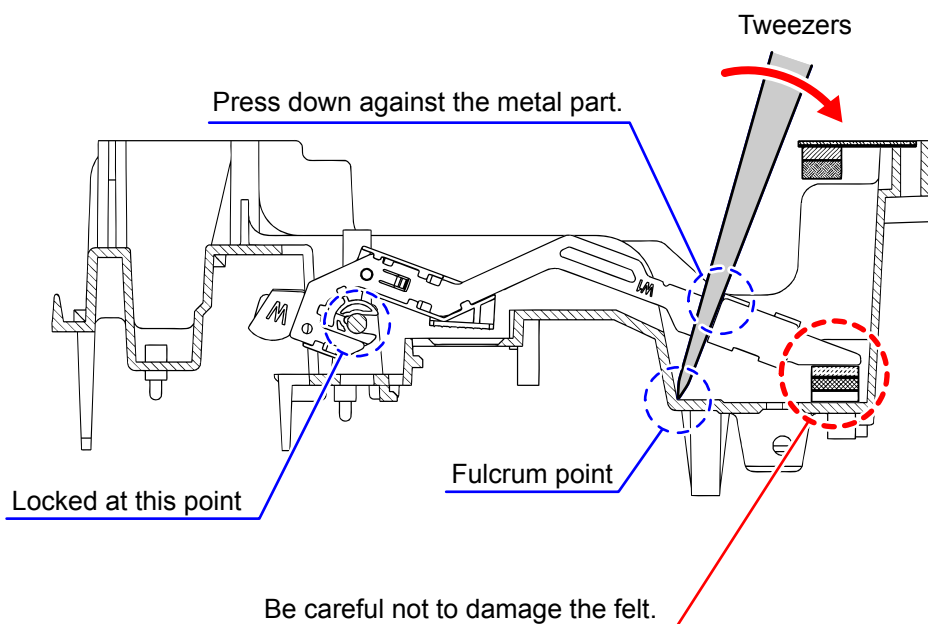
### <Installing the hammers>

Be sure to install each hammer at its designated location. If a hammer does not move smoothly, check if it is installed at the correct location.

Follow the same procedures shown below to install a hammer for both black and white keys.

- (1) Use the tweezers to set a hammer at its correct location.
- (2) Press the chassis with the tip of tweezers.
- (3) Using the chassis-tweezers contact as a fulcrum point, press down the metal part of the hammer in the direction of the red arrow in the illustration below, and then install the hammer.

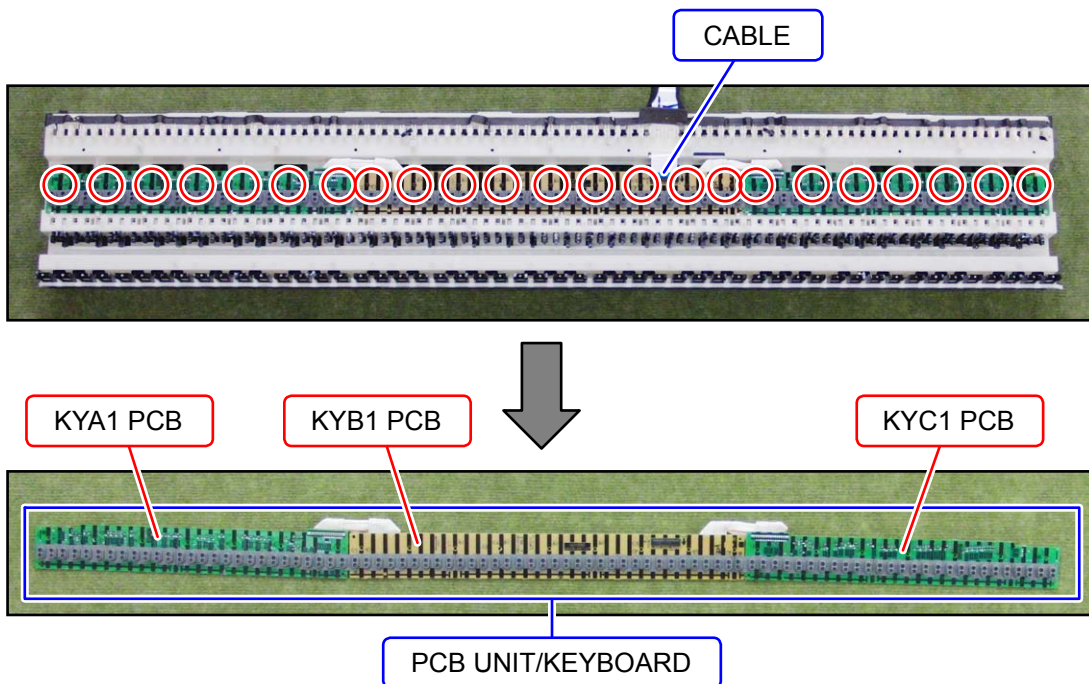
**[NOTE]** When installing, do not damage the felt.



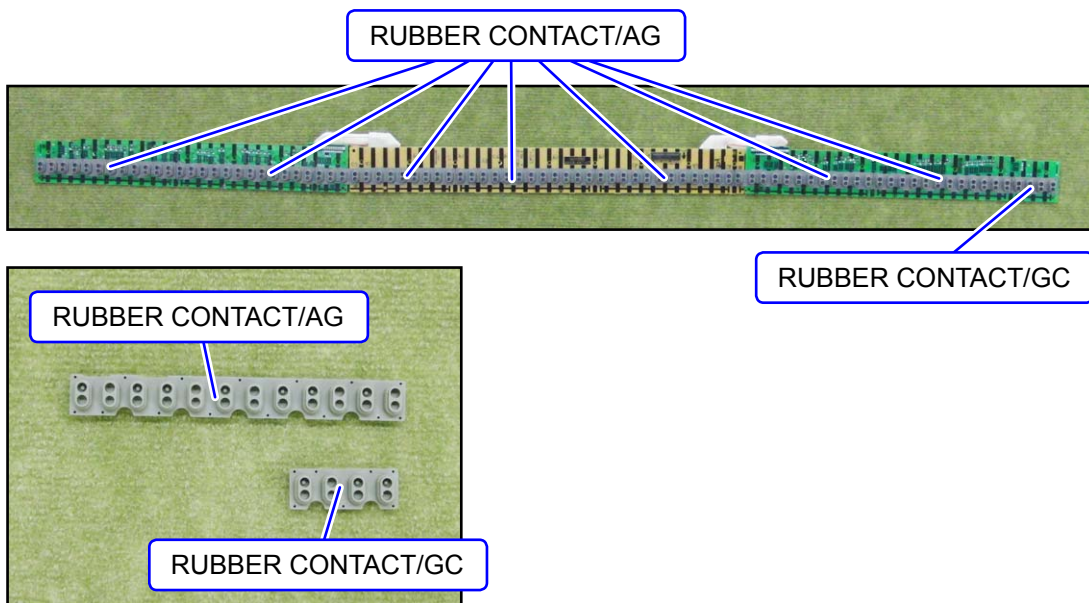


### C. Remove the PCB UNIT/KEYBOARD

- C-1. Unlock the connector and disconnect the CABLE.
- C-2. Undo 23 screws and then remove the PCB UNIT/KEYBOARD.



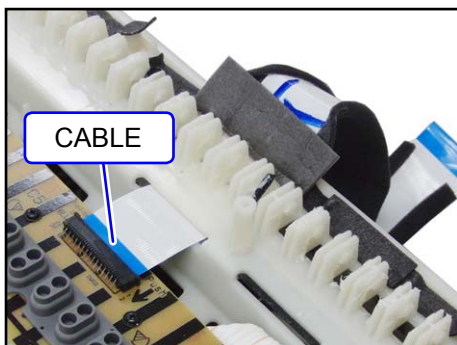
- C-3. Remove eight RUBBER CONTACT.
- [NOTE]** The RUBBER CONTACT/GC differs from the others in length.



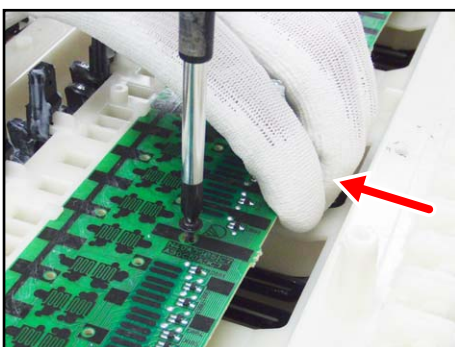
### <Installing the PCB UNIT/KEYBOARD>

- (1) Connect the CABLE to the KYB1 PCB and lock the connector.

**[NOTE]** Insert it firmly and lock up.



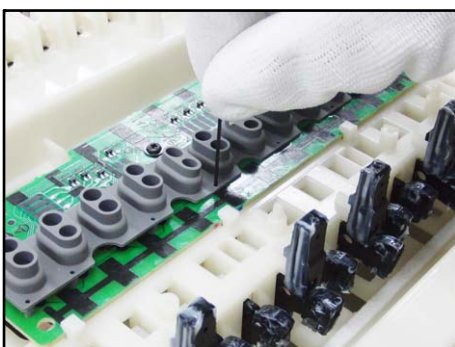
- (2) Secure the KYA1/KYB1/KYC1 PCBs with 23 screws. Press the PCBs lightly in the direction of the red arrow in the illustration below while tightening a screw.



- (3) Install eight RUBBER CONTACT.

**[NOTE]** Be sure to install the RUBBER CONTACT/GC at the correct location.

**[NOTE]** Lightly insert the tip of a rubber contact strip into the PCB first, and then, press it in using the end of a paper clip. Do not press the RUBBER CONTACT forcefully to avoid damaging the RUBBER CONTACT.



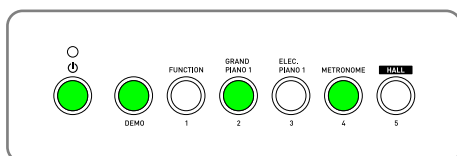
## DIAGNOSTIC PROGRAM

### ■ Preparation

- (1) Connect the AC adaptor.
- (2) Have a pedal (SP-3 or SP-20) ready.
  - [NOTE]** SP-3 is the pedal that comes with this digital piano.
  - [NOTE]** SP-20 is a pedal sold separately.
  - [NOTE]** The “Pedal Check” cannot be performed without a pedal.
- (3) Adjust the main volume so that it is at about 1/3 of the full volume.
- (4) Have a computer and USB cable ready.
  - [NOTE]** Please refer to the user’s guide for computer system requirements.
  - [NOTE]** The “USB Check” cannot be performed without a computer and a USB cable.

### ■ How to Start the Diagnostic Program

- (1) Hold down the [DEMO], [GRAND PIANO 1] and [METRONOME] buttons at the same time, to turn the power ON.
  - [NOTE]** Be sure to turn OFF the power when the test is finished.



- (2) Release the [DEMO], [GRAND PIANO 1] and [METRONOME] buttons
- (3) The diagnostic program starts and then digital piano enters in the root mode where it waits for test item selection.

### ■ Test Items

In root mode, you can perform arbitrary test by pressing a desired button that corresponds to the test item.

Test Items	Buttons	Note
A. Button Check	DEMO	
B. ROM Version Check	METRONOME	
C. ROM Checksum Test	GRAND PIANO 2	
D. Pedal Check	ELEC PIANO 1	Pedal (SP-3 or SP-20)
E. USB Check		Computer, USB cable

## ■ Test Procedure

### A. Button Check

**[NOTE]** You cannot cancel this check procedure mid-way.

A-1. Press the [DEMO] button to perform the “Button Check”.

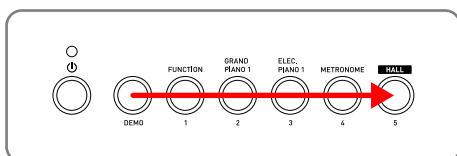
A-2. Press the button in the order indicated in the figure.

**If the result passes (OK):**

- The confirmation chord sounds.

**If the result fails (NG):**

- If there is a button failure or the buttons are pressed in a wrong sequence, an error tone sounds.



A-3. When the [HALL] button is pressed at the end, press the [HALL] button again to return to the root mode.

### B. ROM Version Check

B-1. Press the [METRONOME] button to perform the “ROM Version Check”.

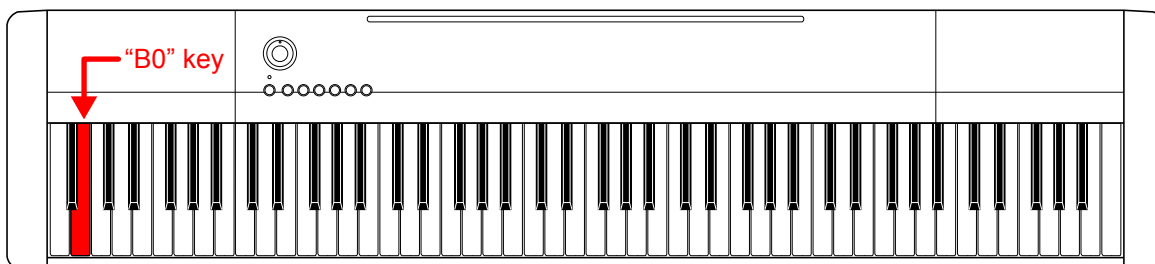
B-2. Press the “B0” key.

**If the result passes (OK):**

- The confirmation chord sounds.

**If the result fails (NG):**

- The error tone sounds.



B-3. Press the [HALL] button to return to the root mode.

### C. ROM Checksum Test

C-1. Press the [GRAND PIANO 1] button to select the “ROM Checksum Test”.

C-2. Press the [GRAND PIANO 1] button to perform the check.

**If the result passes (OK):**

- The confirmation chord sounds.

**If the result fails (NG):**

- The error tone sounds.

C-3. Press the [HALL] button to return to the root mode.

## D. Pedal Check

---

- D-1. Connect the pedal to the DAMPER PEDAL jack.
- D-2. Press the [ELEC PIANO 1] button to select the “Pedal Check”.
- D-3. Press the pedal.

**If the result passes (OK):**

- The confirmation chord sounds.

**If the result fails (NG):**

- The error tone sounds.

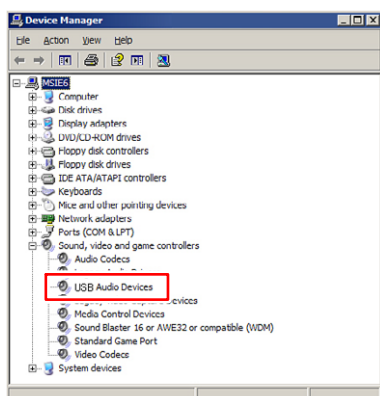
- D-4. Press the [HALL] button to return to the root mode.

## E. USB Check

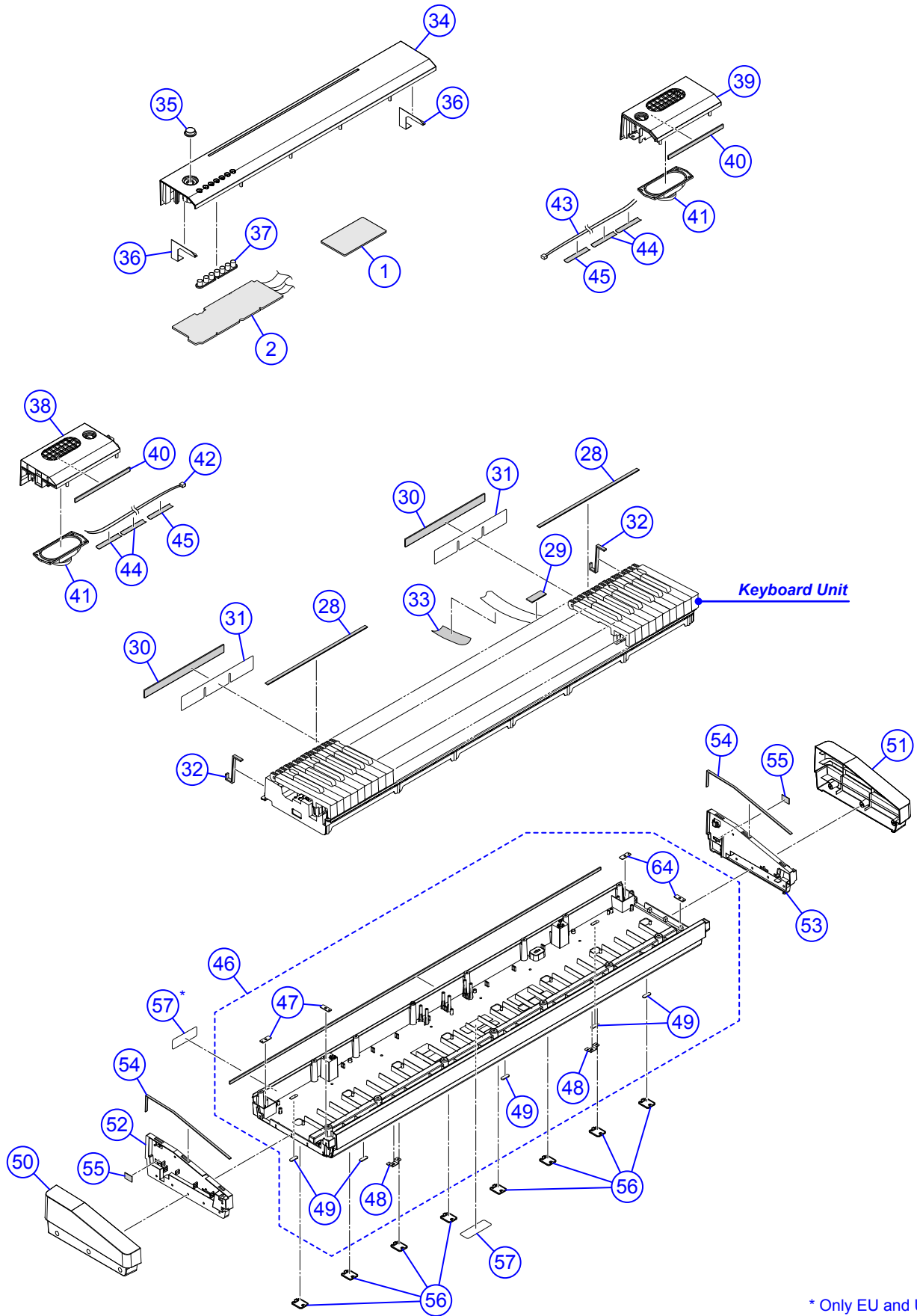
---

**[NOTE]** The following procedures are for a computer with Windows XP.

- E-1. Connect the digital piano to the computer with a USB cable.
- E-2. Open the Windows “Device Manager” and then check that “USB Audio Devices” is listed under the “Sound, video and game controllers”.
- E-3. Disconnect the USB cable.
- E-4. Check that the “USB Audio Devices” is not listed under the “Sound, video and game controllers”.

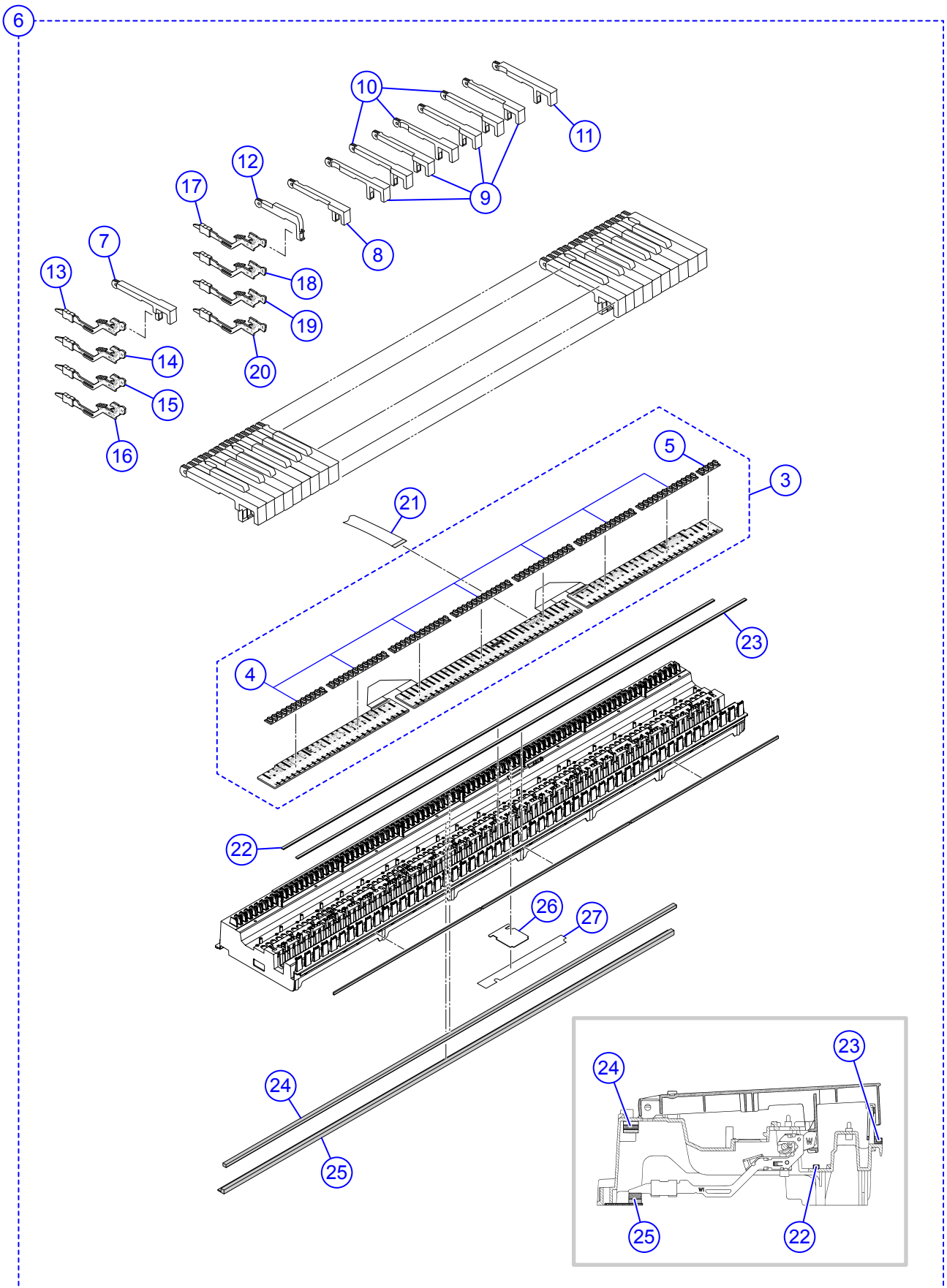


# EXPLODED VIEW



\* Only EU and UK

Keyboard Unit



# PARTS LIST

## CDP-130

### **[Notes]**

1. Prices and specifications are subject to change without prior notice.
2. Refer to the latest “Parts Price Code” at “PARTS FINDER” on the Casio Service Website (<https://www.servicecasio.com>).
3. As for spare parts order and supply, refer to the “GUIDEBOOK for Spare Parts Supply”, published separately.
4. The numbers in item column correspond to the same numbers in drawing.



- 1: CDP-130\_BLACK\_DI                    5: CDP-130\_SILVER\_DI
- 2: CDP-130\_BLACK\_EU                 6: CDP-130\_SILVER\_EU
- 3: CDP-130\_BLACK\_UK                 7: CDP-130\_SILVER\_UK
- 4: CDP-130\_BLACK\_US                 8: CDP-130\_SILVER\_US

N	Item	Code No.	Parts Name	Specification	Q'ty								R	Remarks	
					1	2	3	4	5	6	7	8			
<b>Main PCB</b>															
N	1	10471890	PCB UNIT/MAIN	TK-RJM511112*002	1	1	1	1	1	1	1	1	A	MDA1	
	CN19	10236624	CONNECTOR/USB	UBR24-4K5G00	1	1	1	1	1	1	1	1	C		
	D6,D7	10009218	DIODE	1SS400TE61	2	2	2	2	2	2	2	2	X		
	IC5	10211950	IC	NJM2068M-D(TE1)	1	1	1	1	1	1	1	1	X		
	IC11	10137770	IC	TC7S08FU(TE85L.F)	1	1	1	1	1	1	1	1	X		
N	IC6	10398240	IC	XC6402FV36PR-G	1	1	1	1	1	1	1	1	X		
	L11	10193074	COIL	DLW21HN181SQ2L	1	1	1	1	1	1	1	1	X		
	Q7,Q8	69300298	TRANSISTOR	2SC4081T106R	2	2	2	2	2	2	2	2	X		
	X1	10375016	RESONATOR	7V48080006	1	1	1	1	1	1	1	1	X		
<b>Power &amp; Amp PCB</b>															
N	2	10399370	PCB UNIT/POWER & AMP	TK-RJM511113*001	1	1	1	1	1	1	1	1	B	PSA1	
N	D1,D2	10260786	DIODE	1N5822-C144	2	2	2	2	2	2	2	2	X		
	IC3	10375029	IC	LA5756-MDB-E	1	1	1	1	1	1	1	1	X		
	IC2	10306512	IC	TDA7297	1	1	1	1	1	1	1	1	X		
	J5	10206815	JACK/DAMPER PEDAL	JY-6314*01-030	1	1	1	1	1	1	1	1	B		
	J2	10305218	JACK/PHONES	JY-6316B*01-070	1	1	1	1	1	1	1	1	B		
	J3	10334294	JACK/DC	KM02022ABMP	1	1	1	1	1	1	1	1	A		
	L2	10231919	COIL	RB53-856396NP	1	1	1	1	1	1	1	1	X		
	L3,L4,L6	10231920	COIL	RB53-856397NP	3	3	3	3	3	3	3	3	X		
	L5	10232457	COIL	RII7-860400NP	1	1	1	1	1	1	1	1	X		
N	VR1	10407265	VARIABLE RESISTOR	F164KPD-1N-CASIO-4	1	1	1	1	1	1	1	1	B		Main volume
	D3,D4	23901820	DIODE	1SS355TE-17	2	2	2	2	2	2	2	2	X		
	IC1	10306415	IC	BH3547F-E2	1	1	1	1	1	1	1	1	X		
	Q4	69409403	TRANSISTOR	2SA1576AT106R	1	1	1	1	1	1	1	1	X		
	Q1-Q3	69300298	TRANSISTOR	2SC4081T106R	3	3	3	3	3	3	3	3	X		

- 1: CDP-130\_BLACK\_DI
- 2: CDP-130\_BLACK\_EU
- 3: CDP-130\_BLACK\_UK
- 4: CDP-130\_BLACK\_US
- 5: CDP-130\_SILVER\_DI
- 6: CDP-130\_SILVER\_EU
- 7: CDP-130\_SILVER\_UK
- 8: CDP-130\_SILVER\_US

N	Item	Code No.	Parts Name	Specification	Q'ty								R	Remarks
					1	2	3	4	5	6	7	8		
<b>Keyboard PCB</b>														
	3	10399792	PCB UNIT/KEYBOARD	TK-RJM511215*001	1	1	1	1	1	1	1	1	C	KYA1/KYB1/KYC1 with Rubber contact
N	D801-D827	10398230	DIODE	DAN202UMTL	27	27	27	27	27	27	27	27	X	
N	D828-D861	10398230	DIODE	DAN202UMTL	34	34	34	34	34	34	34	34	X	
N	D862-D888	10398230	DIODE	DAN202UMTL	27	27	27	27	27	27	27	27	X	
	4	10195879	RUBBER CONTACT/AG	RJM502920-001V02	7	7	7	7	7	7	7	7	A	
	5	10195880	RUBBER CONTACT/GC	RJM502921-001V02	1	1	1	1	1	1	1	1	B	
<b>Keyboard Unit</b>														
	6	10399791	KEYBOARD UNIT	TK-RJM511279*001	1	1	1	1	1	1	1	1	C	
N	7	10363265	WHITE KEY/SA	RJM502795-003V05	1	1	1	1	1	1	1	1	X	
N	8	10398222	WHITE KEY/B	RJM502794-001V04	1	1	1	1	1	1	1	1	A	
N	9	10398223	WHITE KEY/CEGB	RJM502862-001V04	7	7	7	7	7	7	7	7	A	
N	10	10398225	WHITE KEY/DFA	RJM502863-001V04	7	7	7	7	7	7	7	7	A	
N	11	10363266	WHITE KEY/SC	RJM502796-003V05	1	1	1	1	1	1	1	1	X	
N	12	10398220	BLACK KEY	RJM502797-001V03	36	36	36	36	36	36	36	36	A	
	13	10341062	HAMMER UNIT/W1	TK-RJM509600*001	13	13	13	13	13	13	13	13	C	
	14	10341063	HAMMER UNIT/W2	TK-RJM509601*001	13	13	13	13	13	13	13	13	C	
	15	10341064	HAMMER UNIT/W3	TK-RJM509602*001	13	13	13	13	13	13	13	13	C	
	16	10341065	HAMMER UNIT/W4	TK-RJM509603*001	13	13	13	13	13	13	13	13	C	
	17	10341066	HAMMER UNIT/B1	TK-RJM509604*001	9	9	9	9	9	9	9	9	C	
	18	10341067	HAMMER UNIT/B2	TK-RJM509605*001	9	9	9	9	9	9	9	9	C	
	19	10341068	HAMMER UNIT/B3	TK-RJM509606*001	9	9	9	9	9	9	9	9	C	
	20	10341069	HAMMER UNIT/B4	TK-RJM509607*001	9	9	9	9	9	9	9	9	C	
	21	10336108	FLAT CABLE	UL2896-30-265-MACP	1	1	1	1	1	1	1	1	X	
N	22	10398226	FELT/LOWER LIMIT/BLACK KEY	RJM510067-002V02	1	1	1	1	1	1	1	1	X	
N	23	10398227	FELT/LOWER LIMIT/WHITE KEY	RJM503562-002V02	1	1	1	1	1	1	1	1	X	
N	24	10398219	FELT/UPPER LIMIT/HAMMER	RJM511203-001V01	1	1	1	1	1	1	1	1	X	
	25	10399793	FELT/LOWER LIMIT/HAMMER	TK-RJM507910*001	1	1	1	1	1	1	1	1	X	
	26	10388000	PLATE	RJM510952-001V01	1	1	1	1	1	1	1	1	X	

- 1: CDP-130\_BLACK\_DI
- 2: CDP-130\_BLACK\_EU
- 3: CDP-130\_BLACK\_UK
- 4: CDP-130\_BLACK\_US
- 5: CDP-130\_SILVER\_DI
- 6: CDP-130\_SILVER\_EU
- 7: CDP-130\_SILVER\_UK
- 8: CDP-130\_SILVER\_US

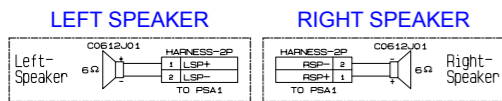
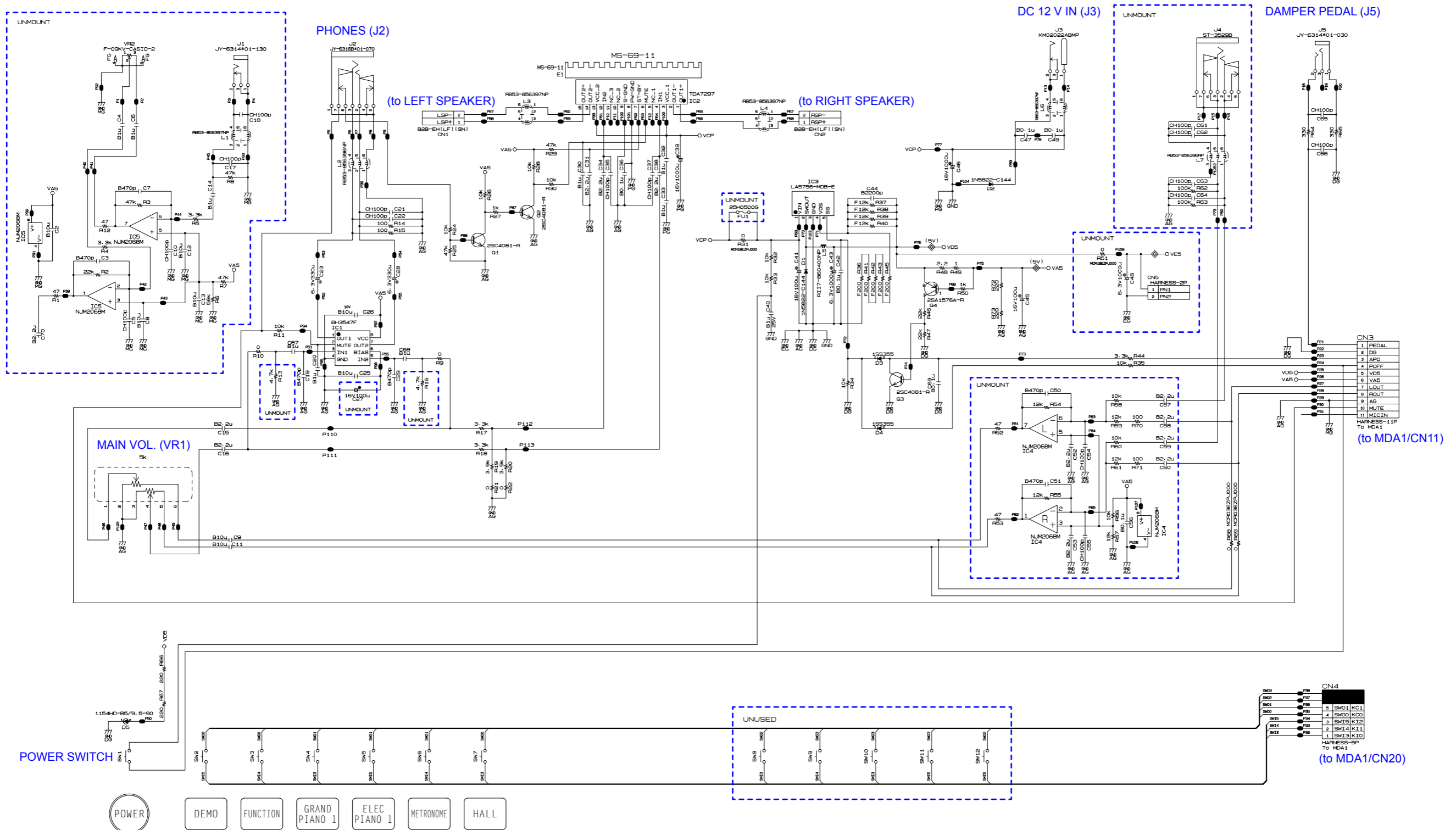
N	Item	Code No.	Parts Name	Specification	Q'ty								R	Remarks
					1	2	3	4	5	6	7	8		
N	27	10343387	FABRIC TAPE/ACP	RJM510100-001V01	1	1	1	1	1	1	1	1	X	
	28	10175757	PACKING/10X386	RJM504743-001V01	2	2	2	2	2	2	2	2	X	
	29	10128574	PACKING	RJM503241-001V01	1	1	1	1	1	1	1	1	X	
	30	69307137	PACKING	M440857-1	2	2	2	2	2	2	2	2	X	
	31	10397766	KEYBOARD SEALING	RJM511107-001V01	2	2	2	2	2	2	2	2	X	
	32	10175758	PACKING/10X100	RJM504744-001V01	2	2	2	2	2	2	2	2	X	
	33	69287160	SPONGE/50X180	M440961-1	1	1	1	1	1	1	1	1	X	
<b>Panel Unit</b>														
N	34	10470969	CASE/PANEL	RJM511090-002V01	1	1	1	1					X	
N	34	10470977	CASE/PANEL	RJM511090-003V01					1	1	1	1	X	
	35	10269765	KNOB/ROTARY	M341109-008V01	1	1	1	1	1	1	1	1	C	
N	36	10398202	BRACKET	RJM511073-001V01	2	2	2	2	2	2	2	2	X	
N	37	10398204	RUBBER BUTTON/A	RJM511075-001V01	1	1	1	1	1	1	1	1	X	
<b>Side Panel Unit</b>														
N	38	10398236	CASE/PANEL/LEFT	RJM511005*001V01	1	1	1	1					X	
N	38	10469227	CASE/PANEL/LEFT	RJM511005*002V01					1	1	1	1	X	
N	39	10398237	CASE/PANEL/RIGHT	RJM511006*001V01	1	1	1	1					X	
N	39	10469228	CASE/PANEL/RIGHT	RJM511006*002V01					1	1	1	1	X	
	40	10130104	FABRIC TAPE/10X180	M440259-002V01	2	2	2	2	2	2	2	2	X	
N	41	10469221	SPEAKER	CJ0612FH01	2	2	2	2	2	2	2	2	X	
N	42	10164046	HARNESS/for LEFT SPEAKER	EH-2P-43-M420	1	1	1	1	1	1	1	1	X	
	43	10308814	HARNESS/for RIGHT SPEAKER	EH-2P-85-M810	1	1	1	1	1	1	1	1	X	
	44	69261580	SPONGE/35X150	M440499-1	4	4	4	4	4	4	4	4	X	
N	45	10312787	SPONGE/50X115	RJM506431-002V01	2	2	2	2	2	2	2	2	X	

- 1: CDP-130\_BLACK\_DI
- 2: CDP-130\_BLACK\_EU
- 3: CDP-130\_BLACK\_UK
- 4: CDP-130\_BLACK\_US
- 5: CDP-130\_SILVER\_DI
- 6: CDP-130\_SILVER\_EU
- 7: CDP-130\_SILVER\_UK
- 8: CDP-130\_SILVER\_US

N	Item	Code No.	Parts Name	Specification	Q'ty								R	Remarks
					1	2	3	4	5	6	7	8		
<b>Main Case Unit</b>														
N	46	1039794	CASE UNIT/LOWER	TK-RJM510997*001	1	1	1	1	1	1	1	1	X	
N	47	10434472	BRACKET	RJM512581-001V01	4	4	4	4	4	4	4	4	X	
N	48	10472512	BRACKET	RJM513282-001V01	2	2	2	2	2	2	2	2	X	
	49	10133655	RUBBER FOOT	RJM503180-001V01	5	5	5	5	5	5	5	5	X	
N	50	10398588	CASE/SIDE/LEFT	RJM510999-002V01	1	1	1	1					X	
N	50	10470976	CASE/SIDE/LEFT	RJM510999-004V02					1	1	1	1	X	
N	51	10398197	CASE/SIDE/RIGHT	RJM511000-001V01	1	1	1	1					X	
N	51	10469225	CASE/SIDE/RIGHT	RJM511000-002V02					1	1	1	1	X	
N	52	10398216	CASE/SIDE/INNER/LEFT	RJM511001-001V01	1	1	1	1	1	1	1	1	X	
N	53	10398217	CASE/SIDE/INNER/RIGHT	RJM511002-001V01	1	1	1	1	1	1	1	1	X	
	54	10179177	FABRIC TAPE/6X310	RJM505229-001V01	2	2	2	2	2	2	2	2	X	
	55	69307162	PACKING	M440967-1	2	2	2	2	2	2	2	2	X	
	56	10337052	LOWER COVER	RJM509409-001V01	8	8	8	8	8	8	8	8	X	
N	57	10470963	LABEL/RATING	RJM513003-012V01	1	2	2	1					X	
N	57	10470974	LABEL/RATING	RJM513003-013V01					1	2	2	1	X	
<b>Accessories</b>														
	-	10342718	MUSIC STAND	RJM508666-001V04	1	1	1	1	1	1	1	1	C	
	-	10133504	FOOT PEDAL/SP3	TK-RJM503195*001	1	1	1	1	1	1	1	1	X	
N	-	10442477	AC ADAPTOR	AD-A12150LW-F4	1	1	1	1	1	1	1	1	B	without AC CORD
	-	10361066	AC CORD	UC2LT-M006A	1			1	1			1	X	US type plug
	-	10361067	AC CORD	EC2LT-M002A	1	1			1	1			X	EU type plug
	-	10361068	AC CORD	KC2LT-M002A	1				1				X	Korea type plug
	-	10361069	AC CORD	AUC2LT-M002A	1				1				X	Australia type plug
	-	10361070	AC CORD	BC2LT-M002A			1				1		X	UK type plug



Power & Amp PCB: M914-PSA1



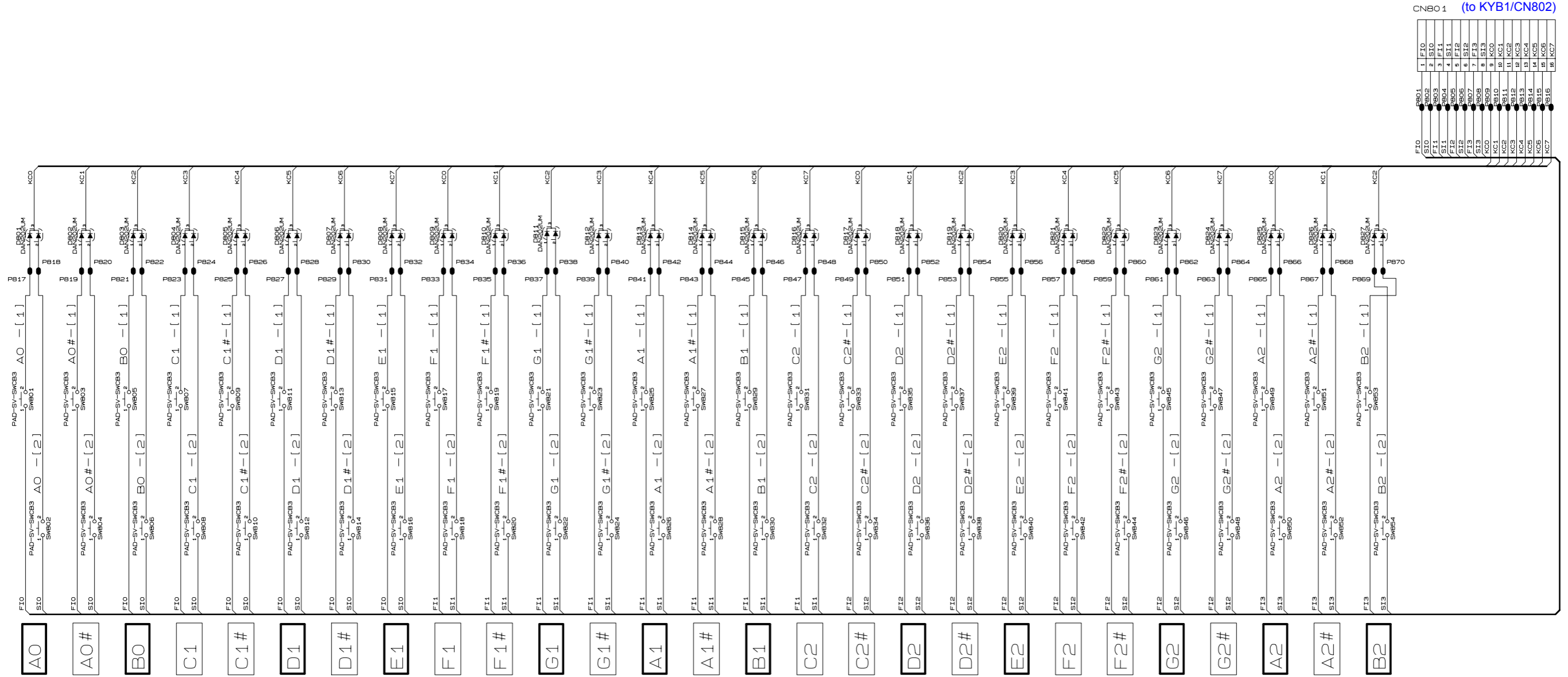
UNMOUNT JUMPER RESISTOR

0 <sub>W</sub> R100	0 <sub>W</sub> R142	0 <sub>W</sub> R154
0 <sub>W</sub> R103	0 <sub>W</sub> R144	
0 <sub>W</sub> R105	0 <sub>W</sub> R146	
0 <sub>W</sub> R106		
0 <sub>W</sub> R107		
0 <sub>W</sub> R108		
0 <sub>W</sub> R109		

JUMPER RESISTOR

0 <sub>W</sub> R110	0 <sub>W</sub> R120	0 <sub>W</sub> R131	0 <sub>W</sub> R141	0 <sub>W</sub> R150
0 <sub>W</sub> R111	0 <sub>W</sub> R121	0 <sub>W</sub> R133	0 <sub>W</sub> R143	0 <sub>W</sub> R151
0 <sub>W</sub> R112	0 <sub>W</sub> R122	0 <sub>W</sub> R134	0 <sub>W</sub> R144	0 <sub>W</sub> R152
0 <sub>W</sub> R113	0 <sub>W</sub> R123	0 <sub>W</sub> R135	0 <sub>W</sub> R145	0 <sub>W</sub> R153
0 <sub>W</sub> R114	0 <sub>W</sub> R124	0 <sub>W</sub> R136	0 <sub>W</sub> R146	0 <sub>W</sub> R154
0 <sub>W</sub> R115	0 <sub>W</sub> R125	0 <sub>W</sub> R137	0 <sub>W</sub> R147	0 <sub>W</sub> R155
0 <sub>W</sub> R116	0 <sub>W</sub> R126	0 <sub>W</sub> R138	0 <sub>W</sub> R148	0 <sub>W</sub> R156
0 <sub>W</sub> R117	0 <sub>W</sub> R127	0 <sub>W</sub> R139	0 <sub>W</sub> R149	0 <sub>W</sub> R157
0 <sub>W</sub> R118	0 <sub>W</sub> R128	0 <sub>W</sub> R140	0 <sub>W</sub> R150	0 <sub>W</sub> R158
0 <sub>W</sub> R119	0 <sub>W</sub> R129			0 <sub>W</sub> R159

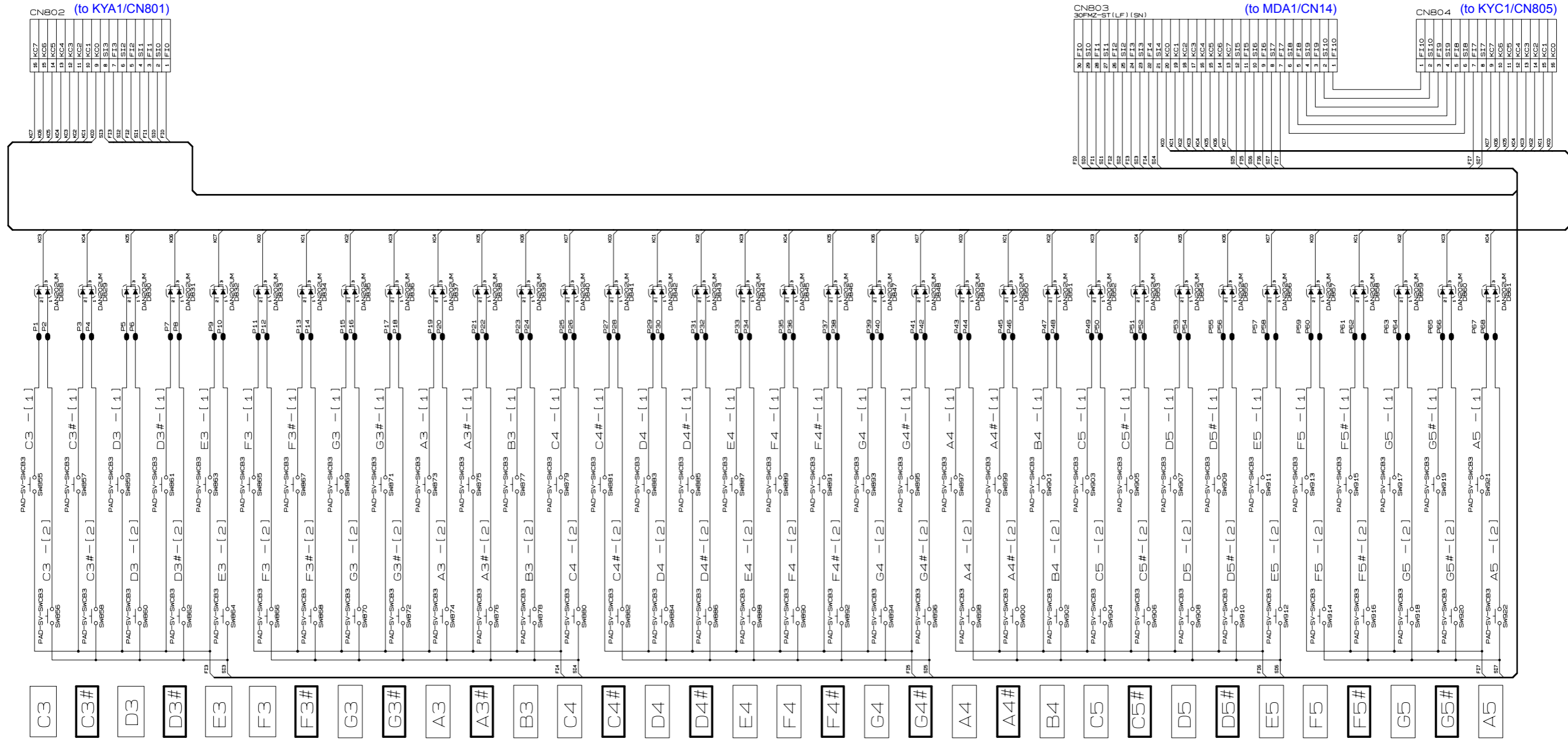
Keyboard PCB: M914-KYA1



CN801 (to KYB1/CN802)

F10	1	FT0
F10	2	FT0
F10	3	FT0
F10	4	FT0
F10	5	FT0
F10	6	FT0
F10	7	FT0
F10	8	FT0
F10	9	FT0
F10	10	FT0
F10	11	FT0
F10	12	FT0
F10	13	FT0
F10	14	FT0
F10	15	FT0
F10	16	FT0
F10	17	FT0
F10	18	FT0
F10	19	FT0
F10	20	FT0
F10	21	FT0
F10	22	FT0
F10	23	FT0
F10	24	FT0
F10	25	FT0
F10	26	FT0
F10	27	FT0
F10	28	FT0
F10	29	FT0
F10	30	FT0
F10	31	FT0
F10	32	FT0
F10	33	FT0
F10	34	FT0
F10	35	FT0
F10	36	FT0
F10	37	FT0
F10	38	FT0
F10	39	FT0
F10	40	FT0
F10	41	FT0
F10	42	FT0
F10	43	FT0
F10	44	FT0
F10	45	FT0
F10	46	FT0
F10	47	FT0
F10	48	FT0
F10	49	FT0
F10	50	FT0
F10	51	FT0
F10	52	FT0
F10	53	FT0
F10	54	FT0
F10	55	FT0
F10	56	FT0
F10	57	FT0
F10	58	FT0
F10	59	FT0
F10	60	FT0
F10	61	FT0
F10	62	FT0
F10	63	FT0
F10	64	FT0
F10	65	FT0
F10	66	FT0
F10	67	FT0
F10	68	FT0
F10	69	FT0
F10	70	FT0
F10	71	FT0
F10	72	FT0
F10	73	FT0
F10	74	FT0
F10	75	FT0
F10	76	FT0
F10	77	FT0
F10	78	FT0
F10	79	FT0
F10	80	FT0
F10	81	FT0
F10	82	FT0
F10	83	FT0
F10	84	FT0
F10	85	FT0
F10	86	FT0
F10	87	FT0
F10	88	FT0
F10	89	FT0
F10	90	FT0
F10	91	FT0
F10	92	FT0
F10	93	FT0
F10	94	FT0
F10	95	FT0
F10	96	FT0
F10	97	FT0
F10	98	FT0
F10	99	FT0
F10	100	FT0

Keyboard PCB: M914-KYB1

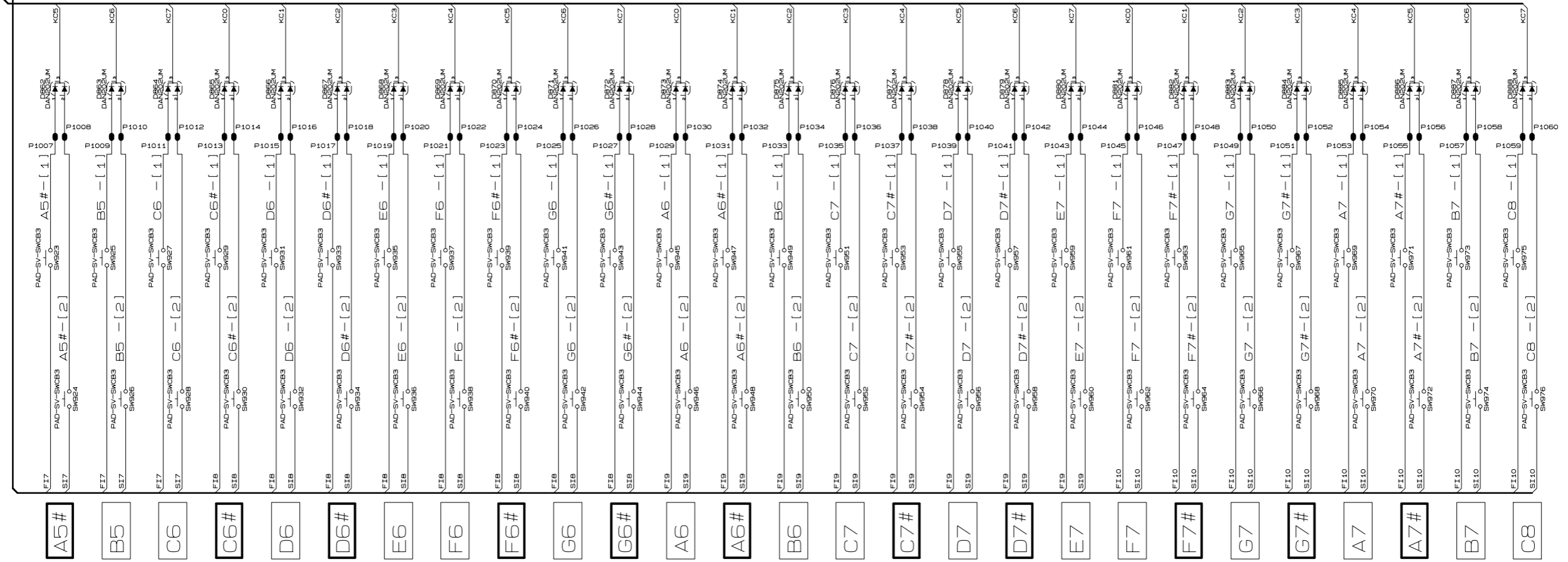




Keyboard PCB: M914-KYC1

(to KYB1/CN804)

P1006	8	KC0
P1005	7	KC1
P1004	6	KC2
P1003	5	KC3
P1002	4	KC4
P1001	3	KC5
P1000	2	KC6
P999	1	KC7
P998	9	SI7
P997	8	SI8
P996	7	SI9
P995	6	SI10
P994	5	SI11
P993	4	SI12
P992	3	SI13
P991	2	SI14
P990	1	SI15



**CASIO COMPUTER CO., LTD.**

CS Technical Department

TOKYO, JAPAN