

# CASIO®

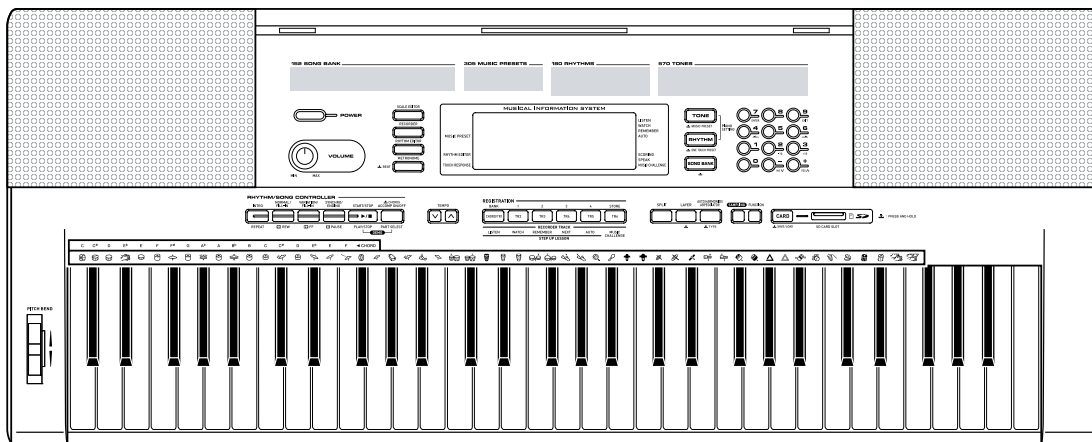
# SERVICE MANUAL

# & PARTS LIST

(without price)

## CTK-5000

AUG. 2008



CTK-5000

**ELECTRONIC KEYBOARD**

Ver.4 : Apr. 2009

# CONTENTS

SPECIFICATIONS-----	1
BLOCK AND WIRING DIAGRAM -----	3
PCB LAYOUT -----	4
<b>CIRCUIT DESCRIPTION -----</b>	<b>5</b>
PRINTED CIRCUIT BOARDS -----	7
<b>DISASSEMBLY -----</b>	<b>11</b>
<b>DIAGNOSTIC PROGRAM -----</b>	<b>22</b>
EXPLODED VIEW -----	26
PARTS LIST -----	27
SCHEMATIC DIAGRAMS-----	30

## SPECIFICATIONS

<b>Keyboard</b>	61 standard-size keys
Touch Response	2 types, Off
<b>Maximum Polyphony</b>	48 notes (24 for certain tones)
<b>Tones</b>	
Built-in Tones	670
Sampling Tones	Up to 8 (Melody Sampling: 5, Drum Sampling: 3)* Up to 10 seconds
Functions	Layer, Split
<b>Reverb</b>	1 to 10, Off
<b>Chorus</b>	1 to 5, Off
<b>Metronome</b>	
Beats per Measure	0, 2 to 6
Tempo Range	30 to 255
<b>Song Bank</b>	
Built-in Songs	152
User Songs	Up to 10*
<b>Step Up Lesson</b>	
Lessons	4 (Listen, Watch, Remember, Auto)
Lesson Part	L, R, LR
Functions	Repeat, Voice Fingering Guide, Note Guide, Performance Evaluation
<b>Music Challenge</b>	20 notes
<b>Auto Accompaniment</b>	
Built-in Rhythms	200
User Rhythms	Up to 10 (Accompaniment Edit)*
<b>Registration</b>	32 (4 setups × 8 banks)
<b>Recorder</b>	Real-time recording, playback
Keyboard Play	5 songs, 6 tracks
Playing Along with a Built-in Songs	1 song (L, R, LR)
Memory Capacity	Approximately 12,000 notes (total for 6 songs)
<b>Other Functions</b>	
Transpose	±1 octaves (12 semitones)
Octave Shift	Upper/Lower ±2 octaves
Tuning	A4 = approx. 440 Hz ±100 cents
Scale Tuning	Scale Fine Tune, Quarter Tone, Preset Scales
Music Preset	305
One Touch Preset	200
Auto Harmonize	12 types
Arpeggiator	90 types
<b>MIDI</b>	16 multi-timbre received, GM Level 1 standard
<b>Musical Information Function</b>	Tone, Rhythm, Song Bank, numbers and names; staff notation, fingering, pedal operation, tempo, measure and beat number, chord name, etc.

**Pitch Bend Wheel**

Pitch Bend Range 0 to 12 semitones

**SD Memory Cards**

Supported SD Memory Cards 2GB or less

Functions SMF playback, file storage, file recall, file delete, card format

**Inputs/Outputs**

USB port TYPE B

Sustain/Assignable jack Standard jack (sustain, sostenuto, soft, rhythm start/stop)

Phones jack Stereo standard jack

Line Out R, L/MONO jacks Standard jack × 2

Output Impedance: 2.3kΩ, Output Voltage: 1.5V (RMS) MAX

Audio In jack Stereo mini jack

Input Impedance: 9kΩ, Input Sensitivity: 200mV

**Power Jack**

12V DC

**Power Supply**

2-way

Batteries 6 D-size zinc-carbon batteries or alkaline batteries

Battery Life Approximately 4 hours continuous operation on alkaline batteries

AC Adaptor AD-12

Auto Power Off Approximately 6 minutes after last key operation (Operates during battery use only)

**Speakers**

12cm × 2 + 3cm × 2 (Output: 6.0W + 6.0W)

**Power Consumption**

12V --- 18W

**Dimensions**

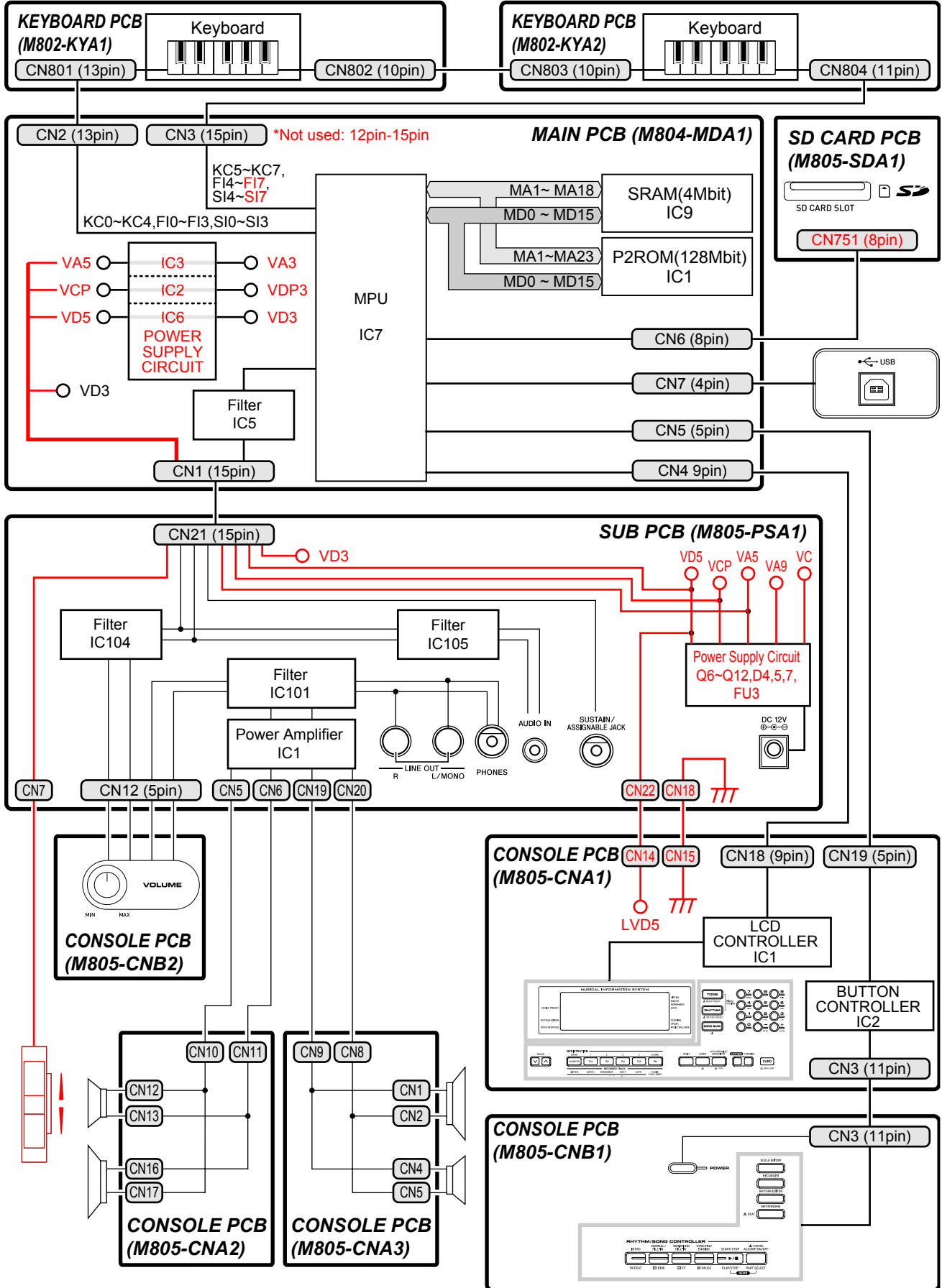
95.0 × 37.6 × 13.0 cm ( $37 \frac{7}{16} \times 14 \frac{13}{16} \times 5 \frac{1}{8}$  inch)

**Weight**

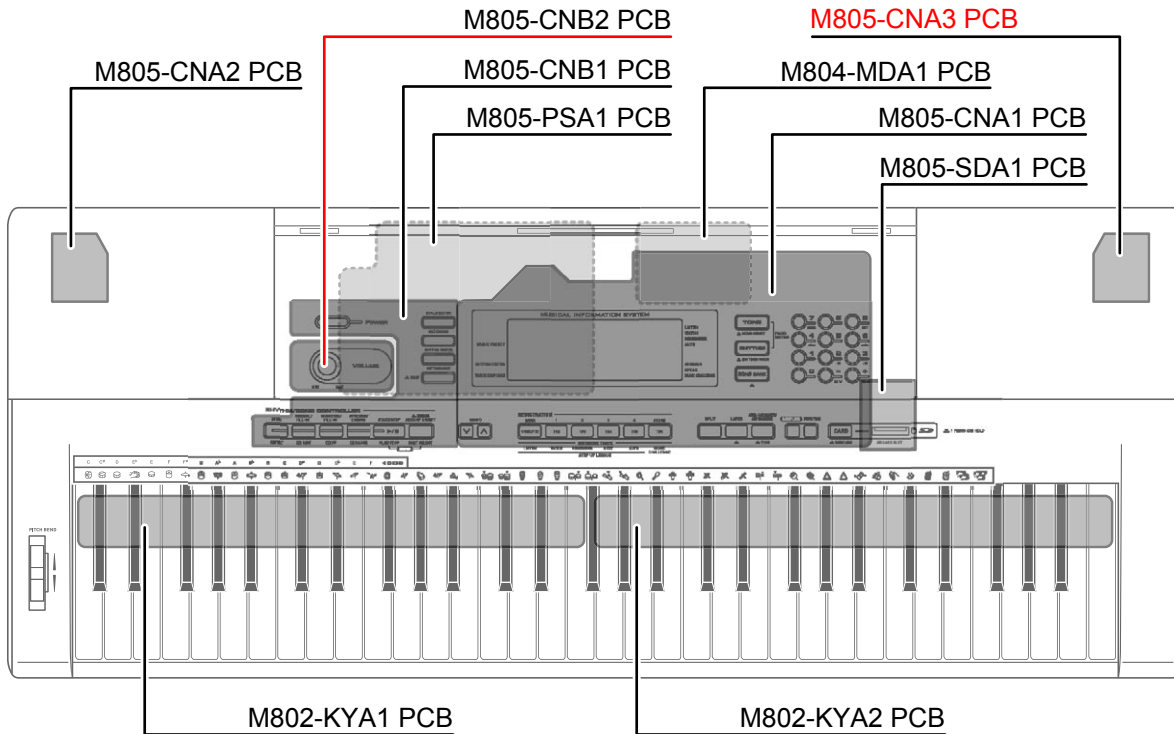
Approximately 5.4kg (11.9 lbs) (without batteries)

- Design and specifications are subject to change without notice.
- \* This data is stored in a shared memory area with a total capacity of approximately 320Kbytes (1Kbyte = 1,024bytes).

# BLOCK AND WIRING DIAGRAM



# PCB LAYOUT



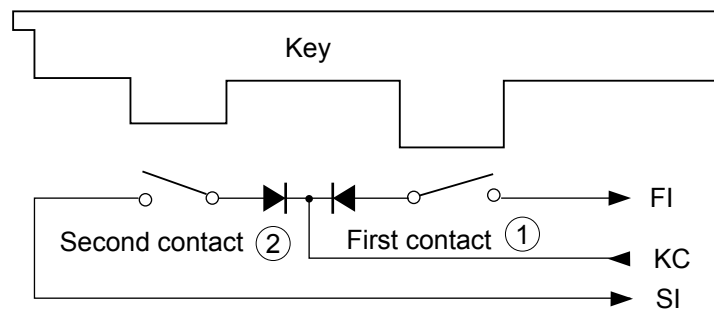
PCB		Components
MAIN PCB	M804-MDA1	MPU, SRAM(4Mbit), P2ROM(128Mbit), Key controller, SD card, USB, Power supply circuit
SUB PCB	M805-PSA1	Power supply circuit, Power amplifier, Phone terminal, Line out, Audio IN, Pedal, DC IN jack
Console PCBs	M805-CNA1	LCD, LCD controller, Button, Button controller
	M805-CNA2	Speaker
	M805-CNA3	Speaker
	M805-CNB1	Power Switch, Button
	M805-CNB2	Main volume
SD CARD PCB	M805-SDA1	SD CARD
Keyboard PCBs	M802-KYA1	Keyboard
	M802-KYA2	

## CIRCUIT DESCRIPTION

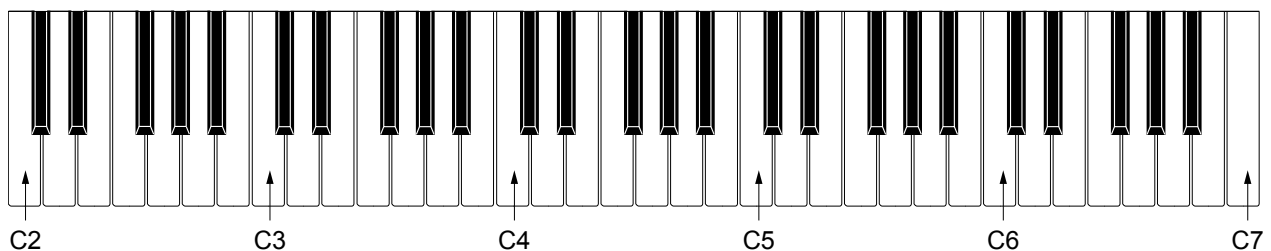
### KEY MATRIX

	KC0	KC1	KC2	KC3	KC4	KC5	KC6	KC7
FI0	C2①	C2#①	D2①	D2#①	E2①	F2①	F2#①	G2①
SI0	C2②	C2#②	D2②	D2#②	E2②	F2②	F2#②	G2②
FI1	G2#①	A2①	A2#①	B2①	C3①	C3#①	D3①	D3#①
SI1	G2#②	A2②	A2#②	B2②	C3②	C3#②	D3②	D3#②
FI2	E3①	F3①	F3#①	G3①	G3#①	A3①	A3#①	B3①
SI2	E3②	F3②	F3#②	G3②	G3#②	A3②	A3#②	B3②
FI3	C4①	C4#①	D4①	D4#①	E4①	F4①	F4#①	G4①
SI3	C4②	C4#②	D4②	D4#②	E4②	F4②	F4#②	G4②
FI4	G4#①	A4①	A4#①	B4①	C5①	C5#①	D5①	D5#①
SI4	G4#②	A4②	A4#②	B4②	C5②	C5#②	D5②	D5#②
FI5	E5①	F5①	F5#①	G5①	G5#①	A5①	A5#①	B5①
SI5	E5②	F5②	F5#②	G5②	G5#②	A5②	A5#②	B5②
FI6	C6①	C6#①	D6①	D6#①	E6①	F6①	F6#①	G6①
SI6	C6②	C6#②	D6②	D6#②	E6②	F6②	F6#②	G6②
FI7	G6#①	A6①	A6#①	B6①	C7①			
SI7	G6#②	A6②	A6#②	B6②	C7②			

Note: Each key has two contacts, the first contact 1 and second contact 2.



### NOMENCLATURE OF KEYS



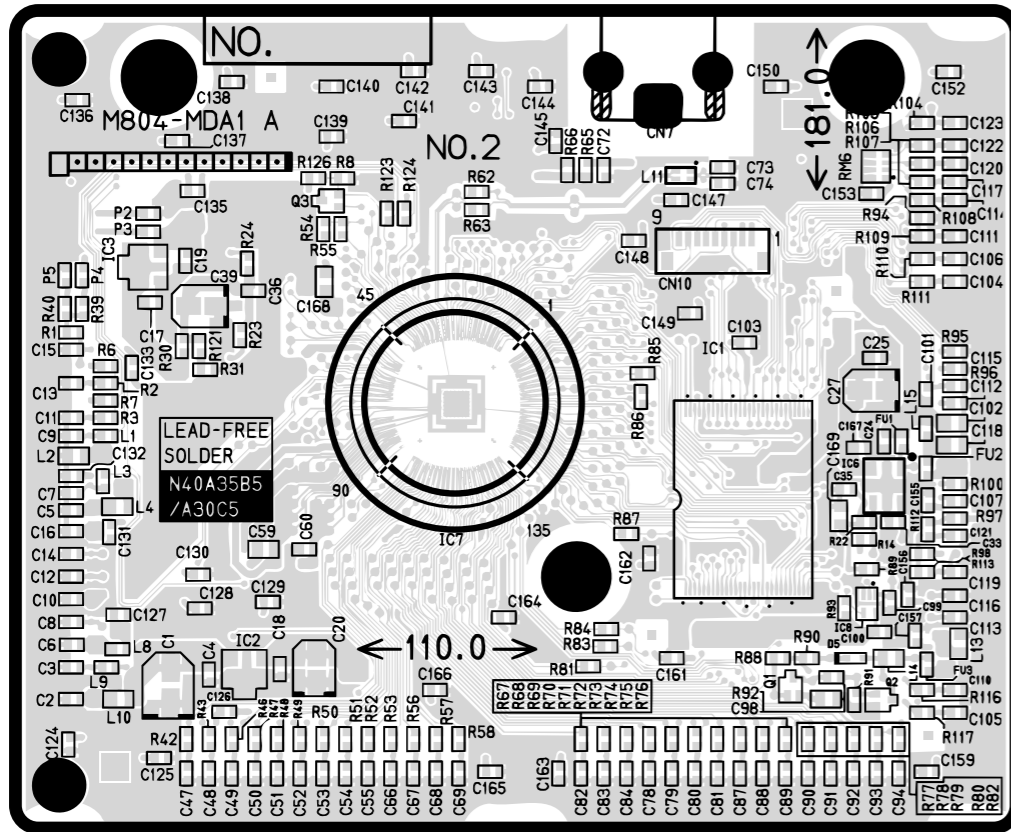
## BUTTON MATRIX

	<b>SW00</b>	<b>SW01</b>	<b>SW02</b>	<b>SW03</b>	<b>SW04</b>	<b>SW05</b>	<b>SW06</b>
<b>SWI0</b>	SAMPLING	RECORDER	RHYTHM	CARD	4	8	9
<b>SWI1</b>	SCALE EDITOR	FUNCTION	SONG BANK	TONE	7	5	6
<b>SWI2</b>	RHYTHM EDITOR	METRONOME	LISTEN	WATCH	1	2	+
<b>SWI3</b>	TEMPO DOWN	START/ STOP	REMEMBER	NEXT	0	-	3
<b>SWI4</b>	CHORDS/ ACCOMP ON_OFF	TEMPO UP	AUTO	MUSIC CHALLENGE	SPLIT	LAYER	AUTO HARMONIZE/ APPEGGIATOR
<b>SWI5</b>	VARIATION/ FILL-IN	SYNCHRO/ ENDING					
<b>SWI6</b>	NORMAL/ FILL-IN	INTRO					

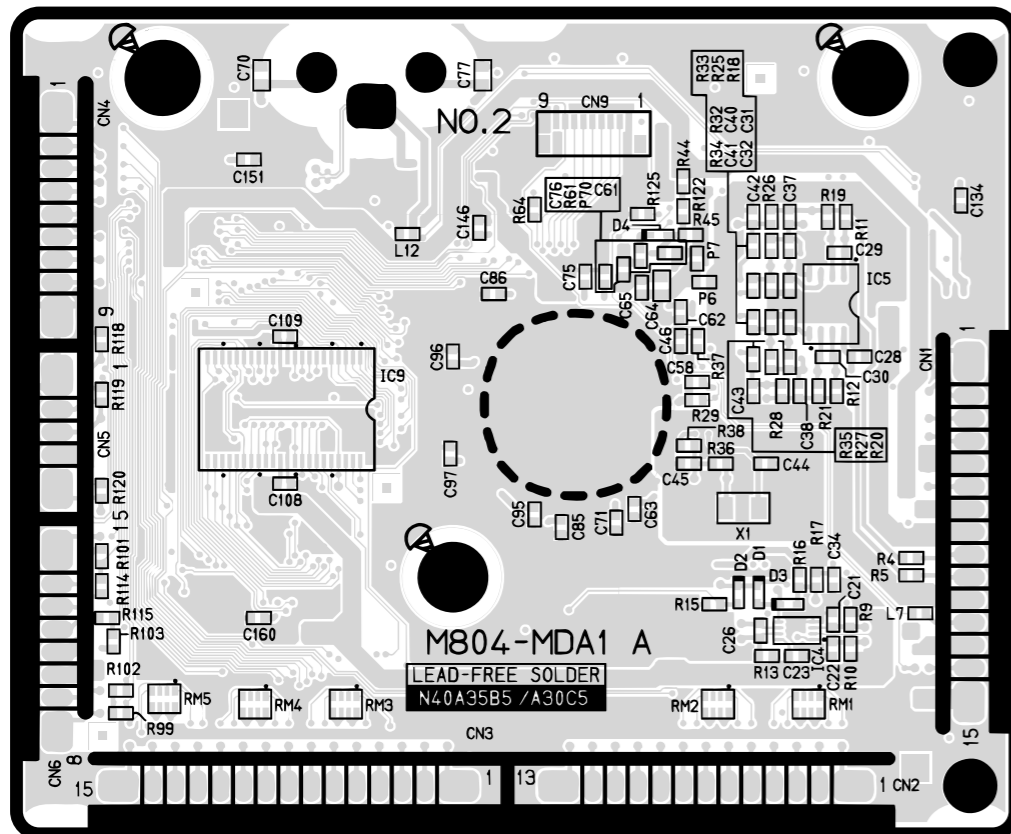


# PRINTED CIRCUIT BOARDS

## Main PCB M804-MDA1

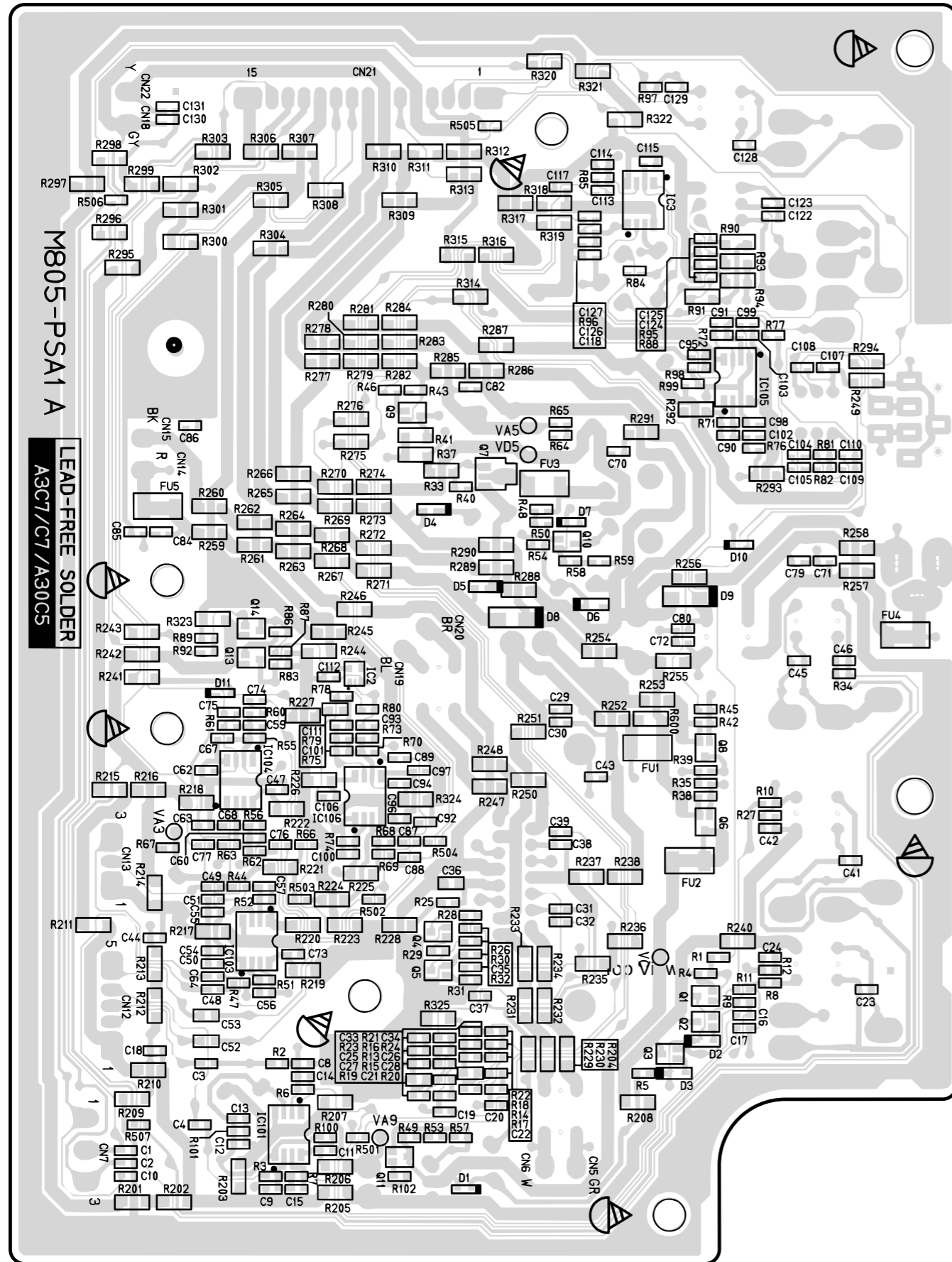


Top View

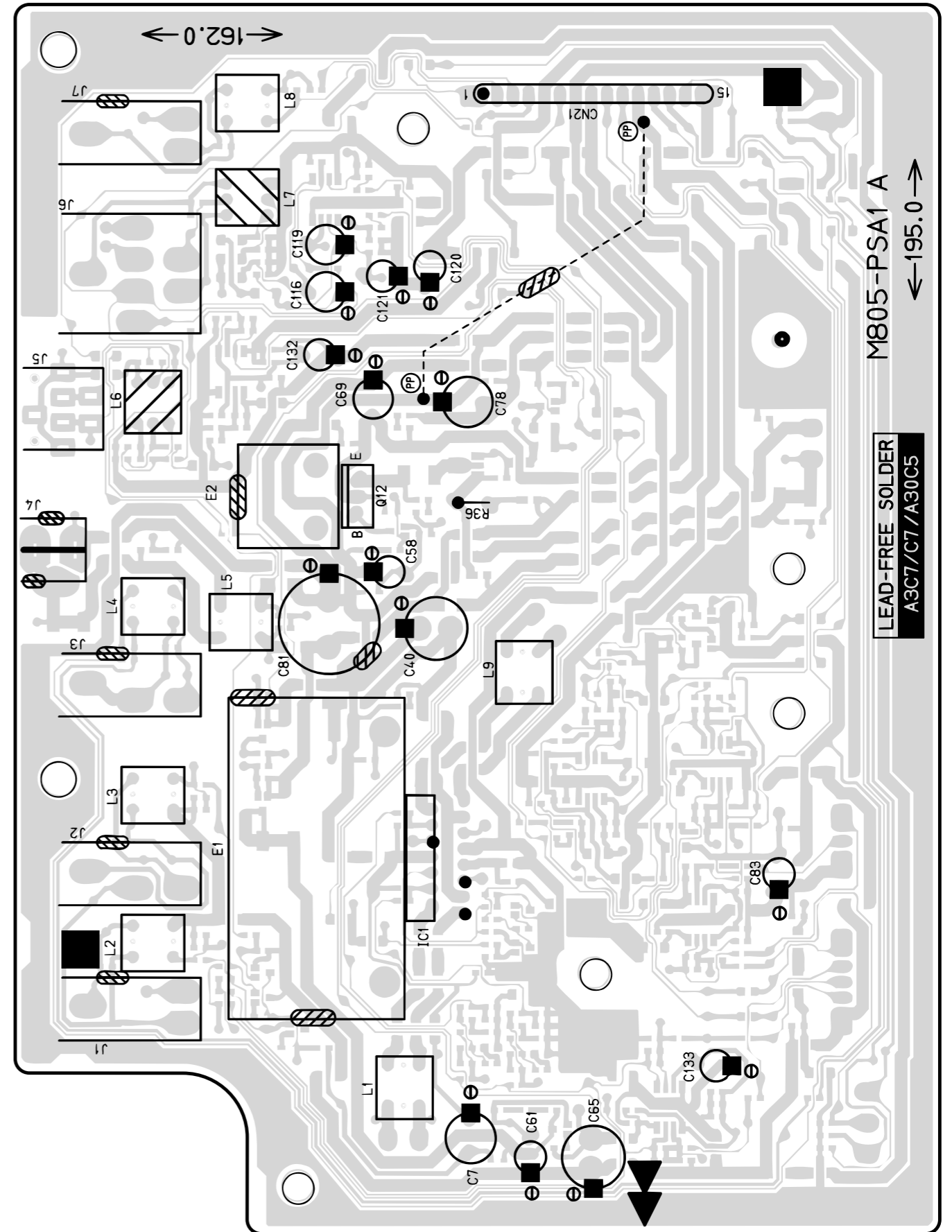


Bottom View

Sub PCB M805-PSA1

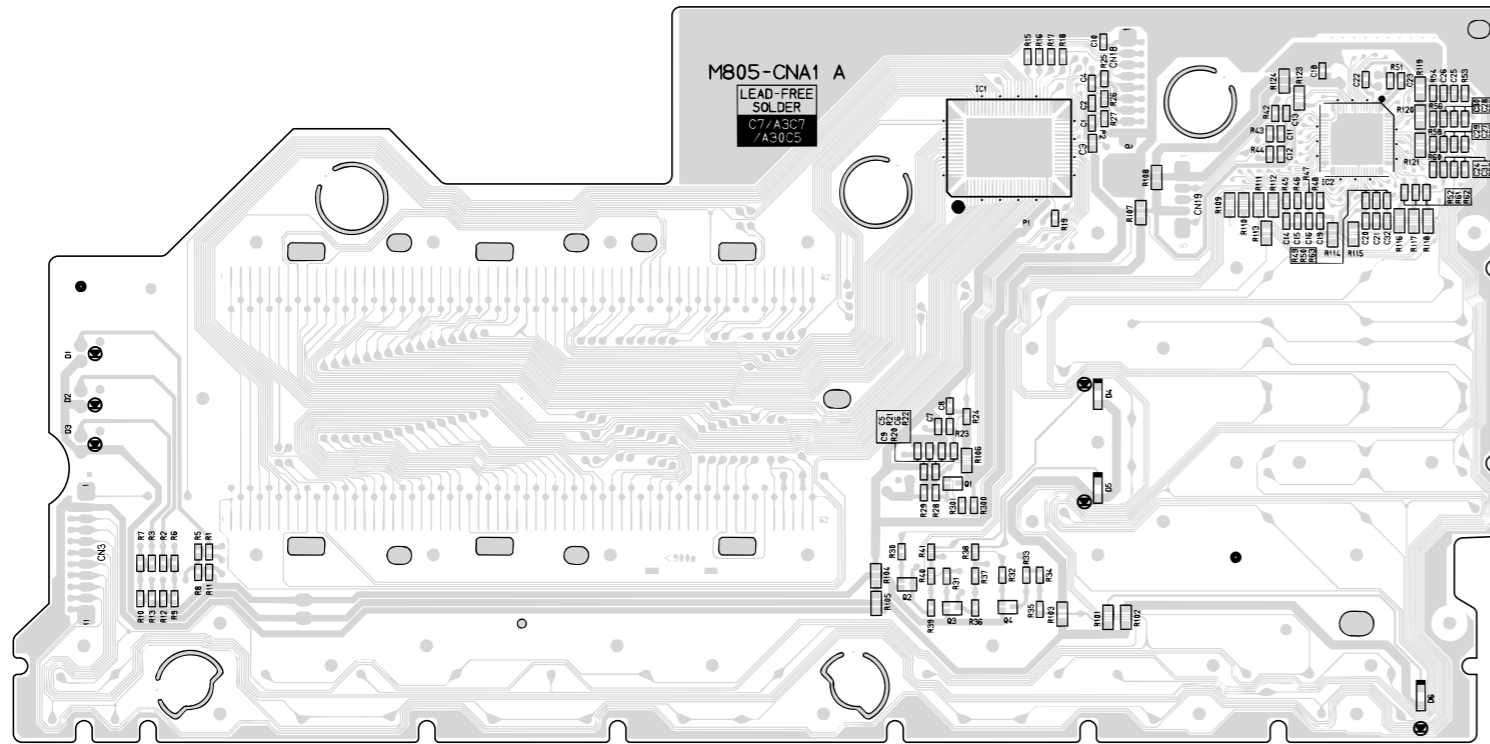


Top View

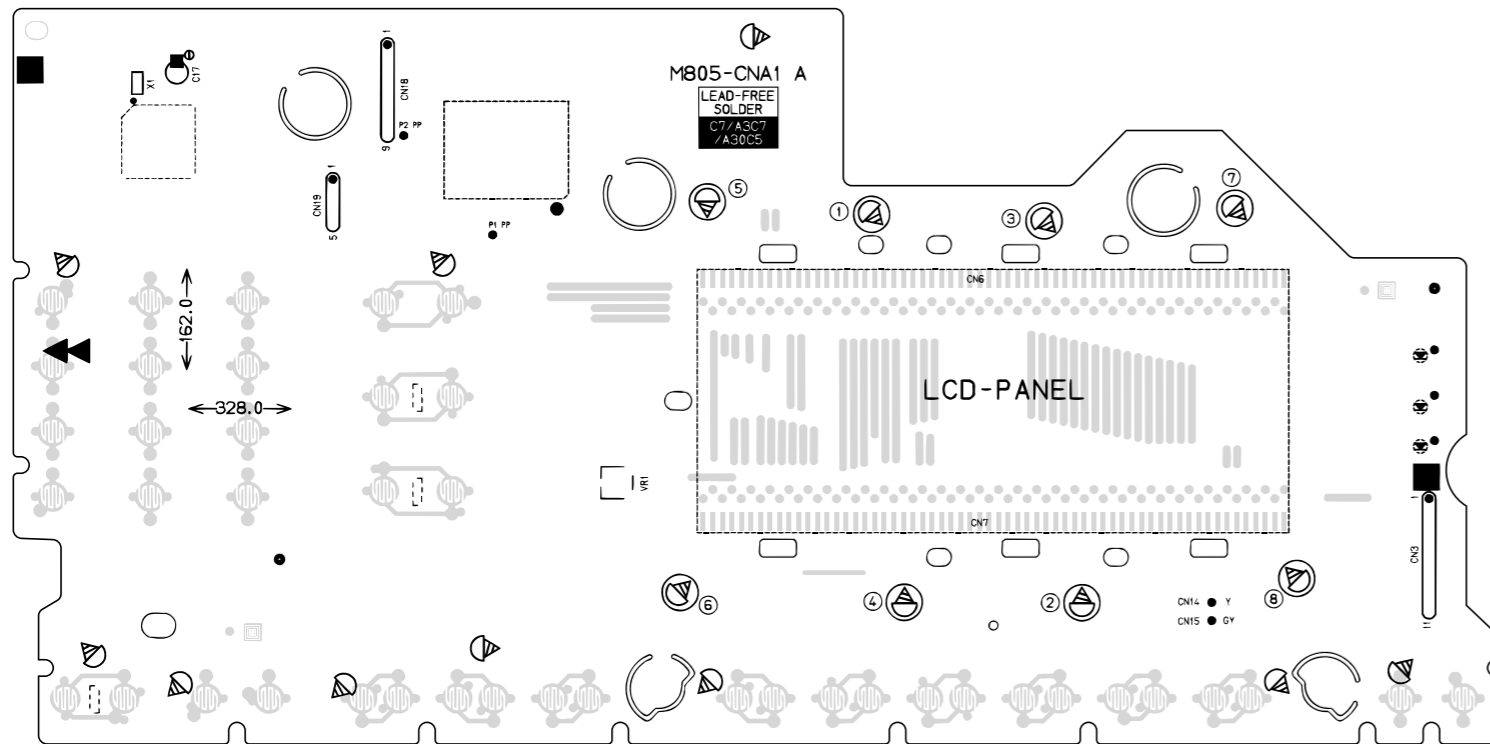


Bottom View

**Console PCB M805-CNA1**

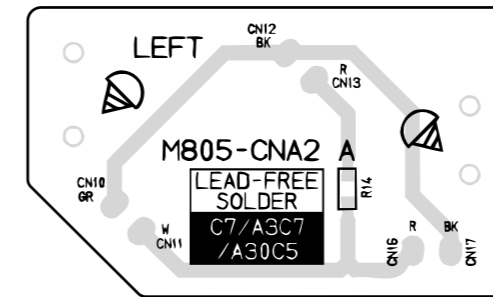


Top View

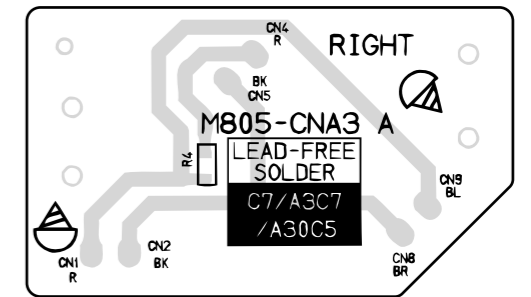


Bottom View

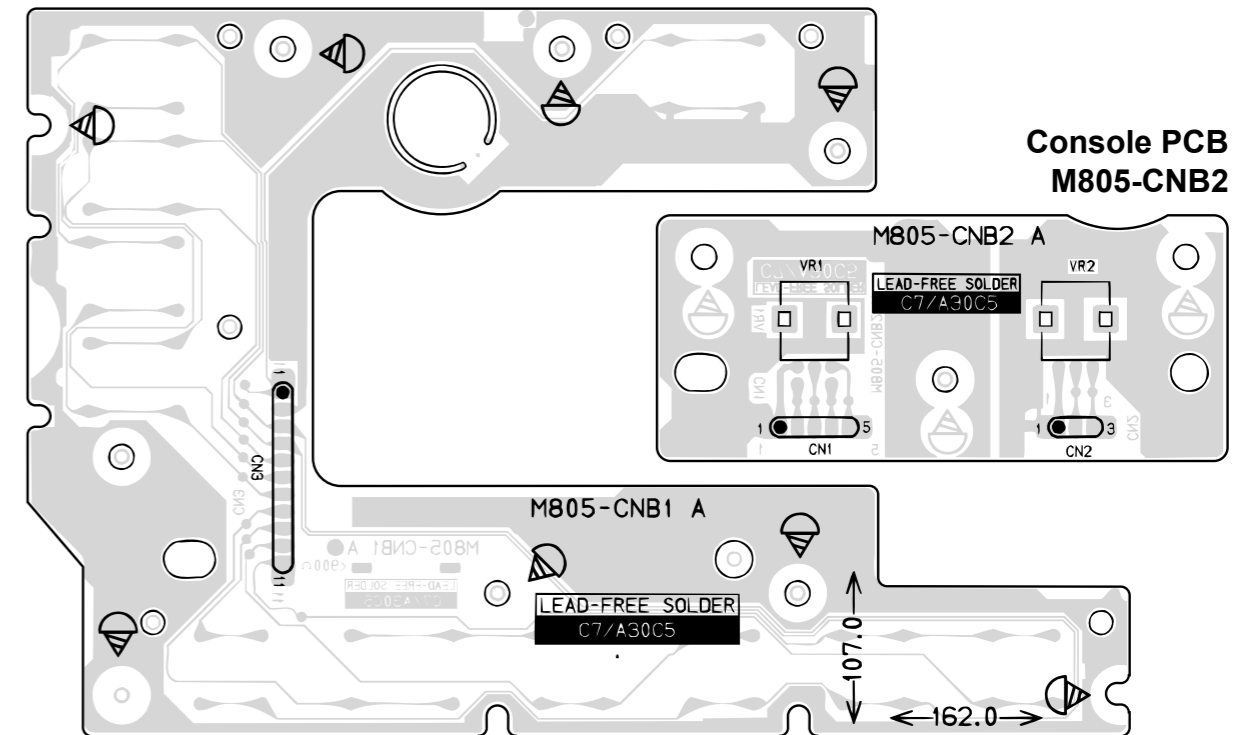
**Console PCB M805-CNA2**



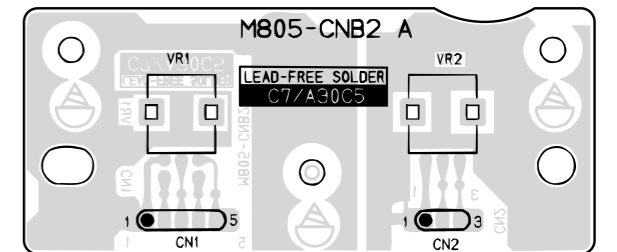
**Console PCB M805-CNA3**



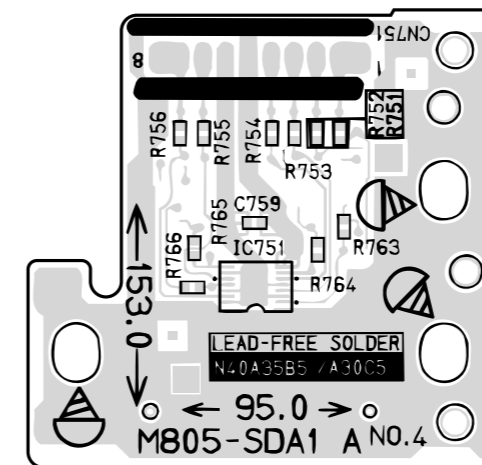
**Console PCB M805-CNB1**



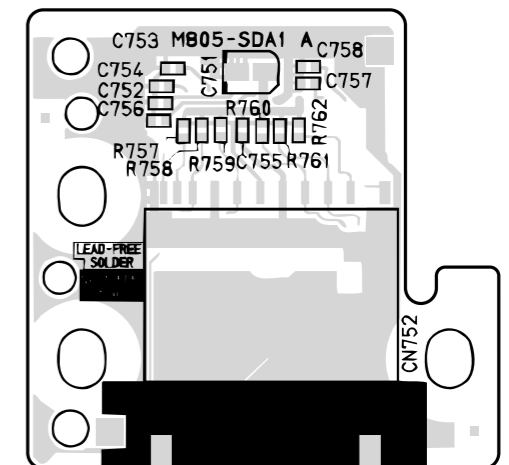
**Console PCB M805-CNB2**



**Console PCB M805-SDA1**

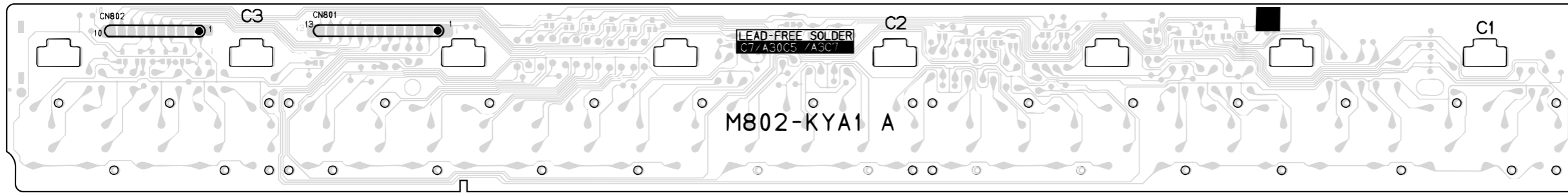


Top View

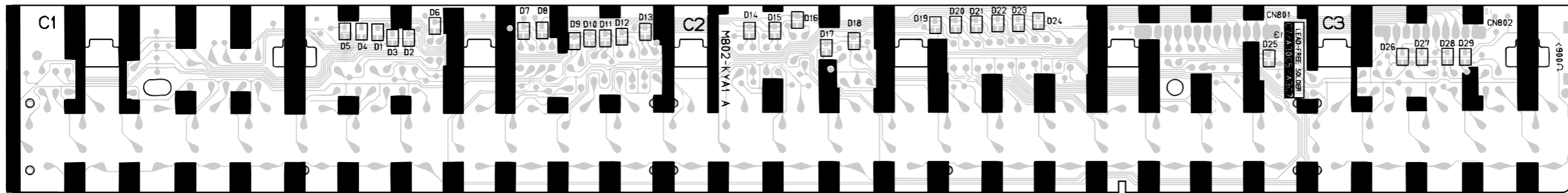


Bottom View

**Keyboard PCB M802-KYA1**

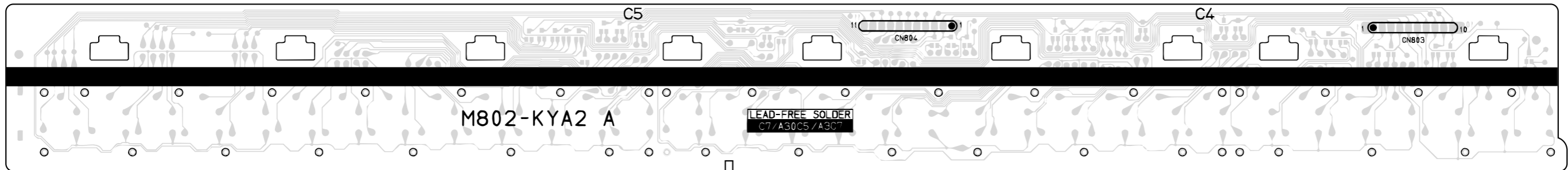


Top View

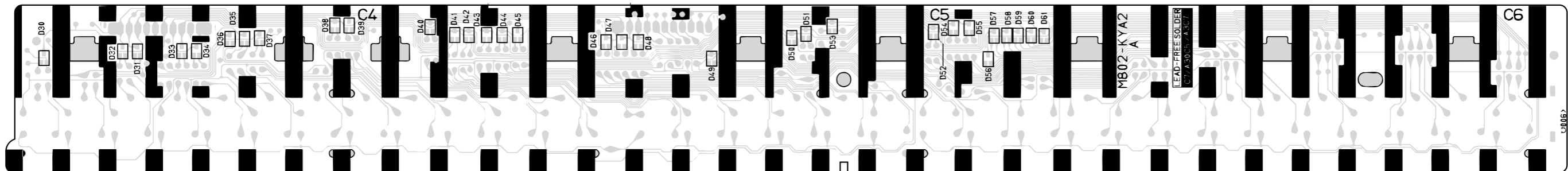


Bottom View

**Keyboard PCB M802-KYA2**



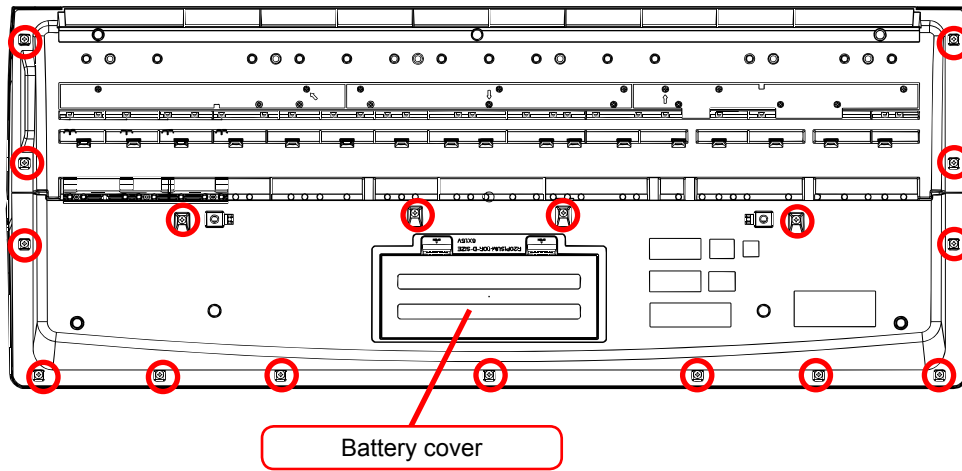
Top View



Bottom View

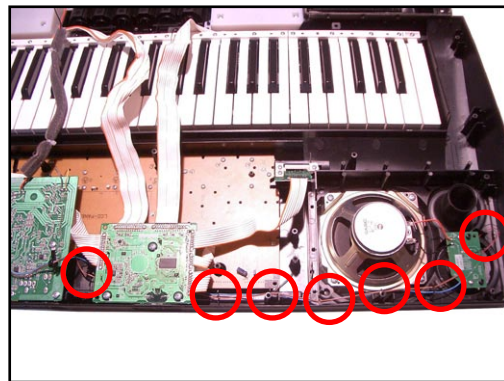
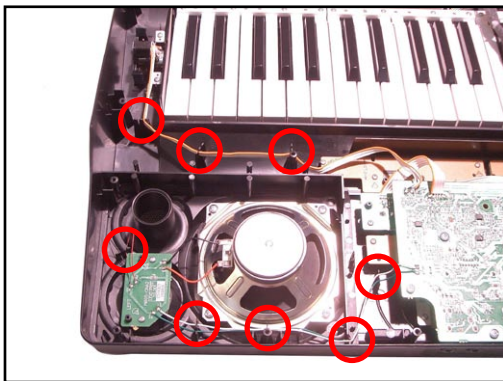
## DISASSEMBLY

1. Remove the battery cover and then battery.
2. Remove 17 screws and then upper case.



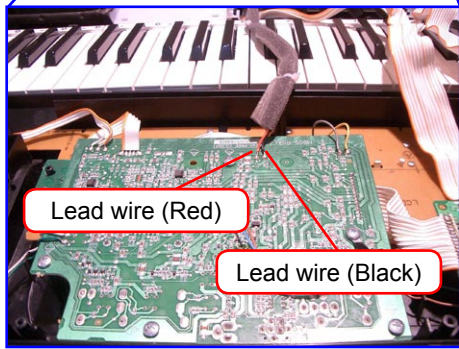
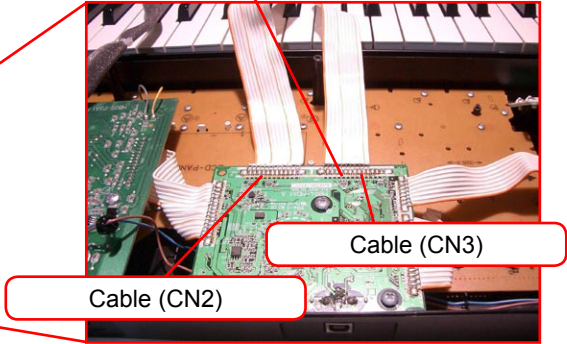
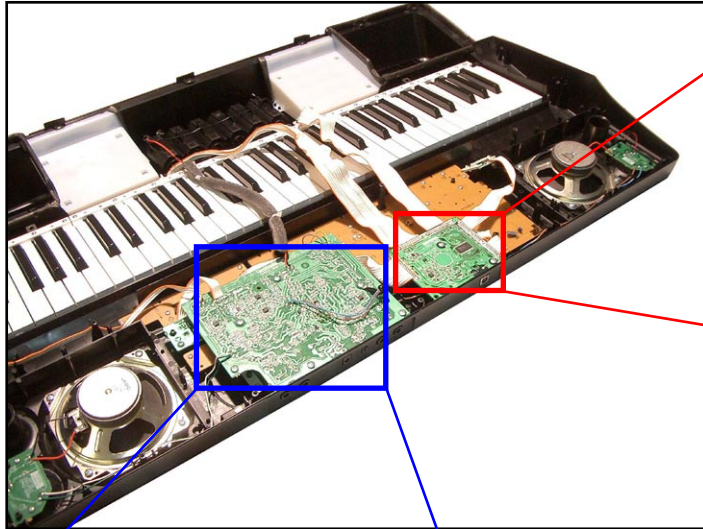
Tips for assembling:

- Fit the the lead wires for the left/right speakers and the bender into the groove of the rib (X15).



3. Remove two lead wires by soldering.
4. Remove two cables by soldering.
5. Make the keyboard unit and the main unit apart.

Cable (CN3)  
Precaution while assembling the main Connector 3.  
Number of pins on the PCB and pins on the cable are different.  
Start connecting from the NO.1 pin whose color is orange.

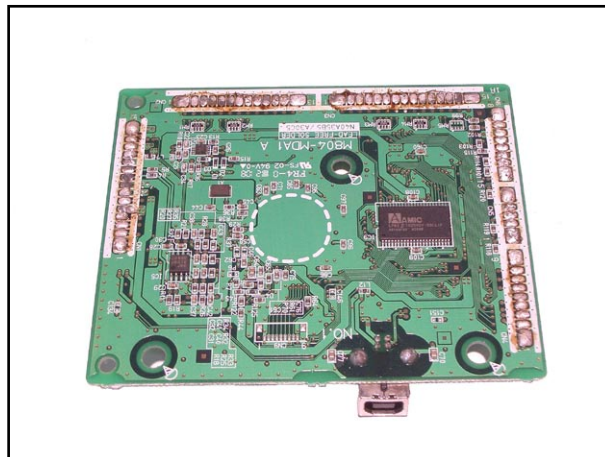
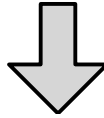
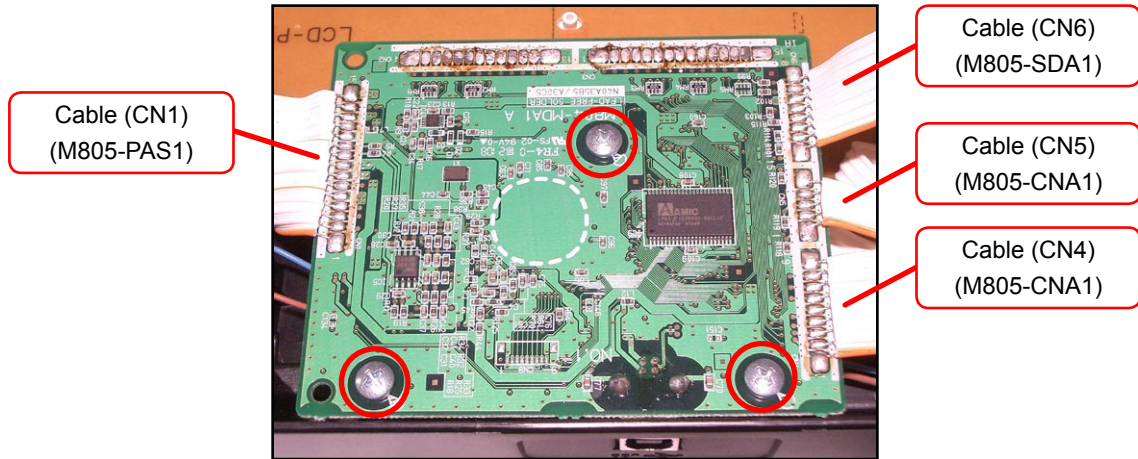


6. To remove the main PCB (M804-MDA1).

6-1. Remove three screws on the PCB (M804-MDA1).

6-2. Remove four cables by soldering.

6-3. Remove the PCB (M804-MDA1).



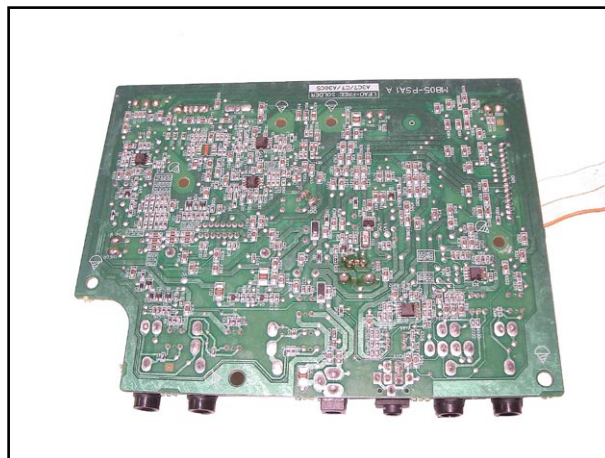
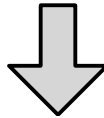
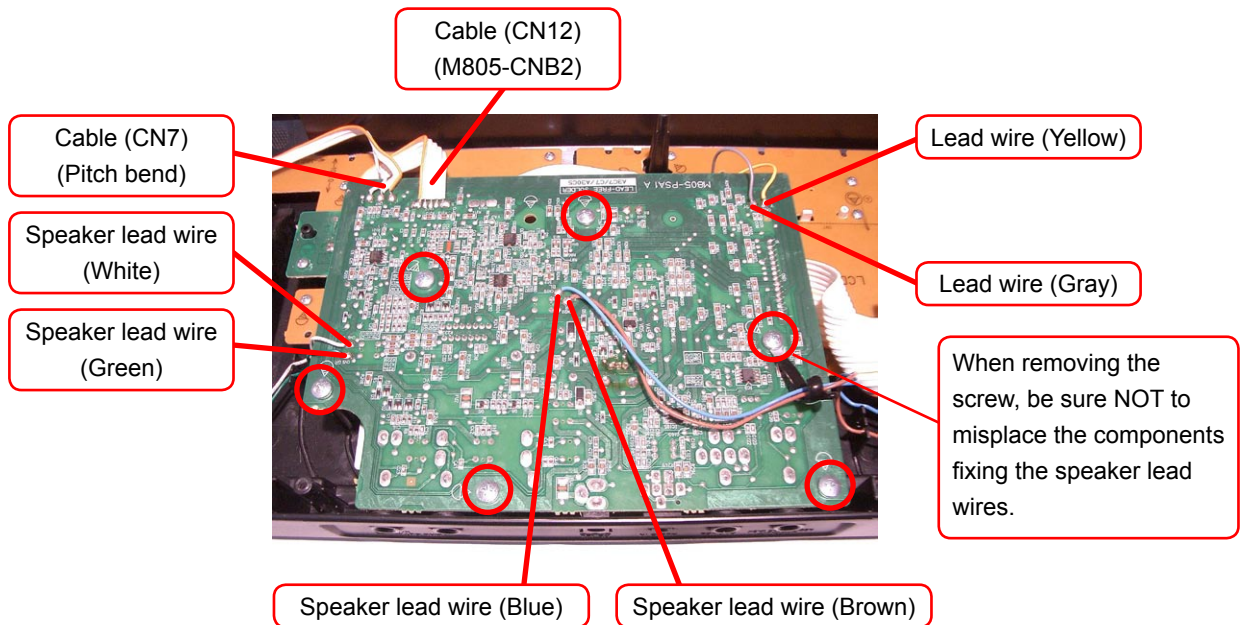
7. To remove the sub PCB (M805-PSA1).

7-1. Remove six screws on the PCB (M805-PSA1).

7-2. Remove two cables by soldering.

7-3. Remove six lead wires by soldering.

7-4. Remove the PCB (M805-PSA1).

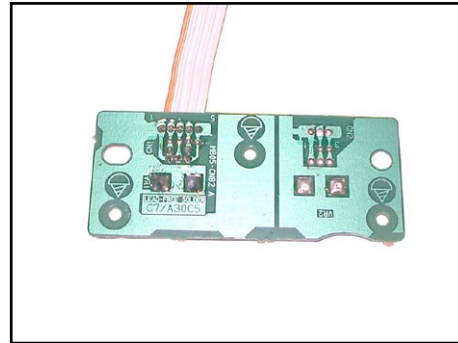
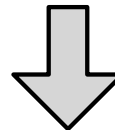
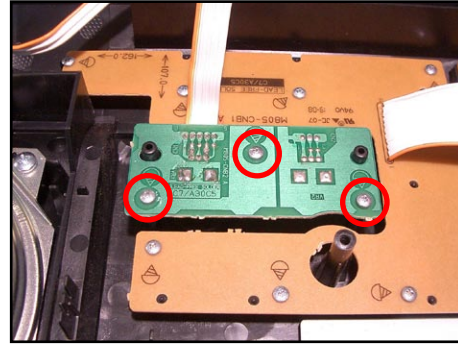
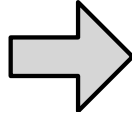




8. To remove the console PCB (M805-CNB2).

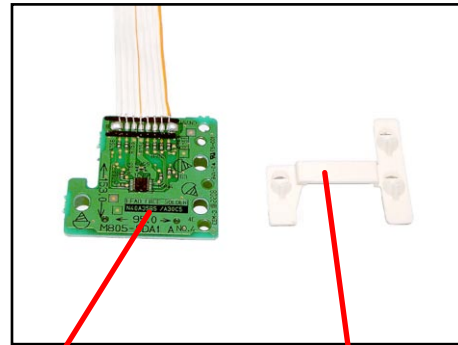
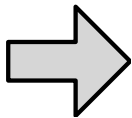
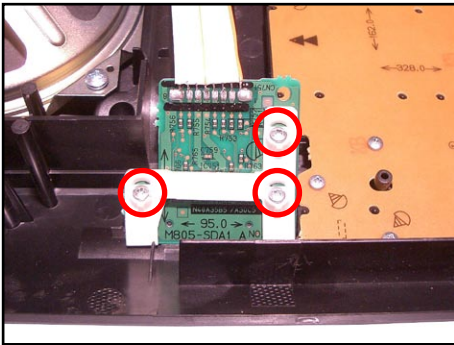
8-1. Remove the volume knob.

8-2. Remove three screws and then the PCB (M805-CNB2).



9. To remove the SD CARD PCB (M805-SDA1).

9-1. Remove three screws and then the PCB (M805-SDA1).

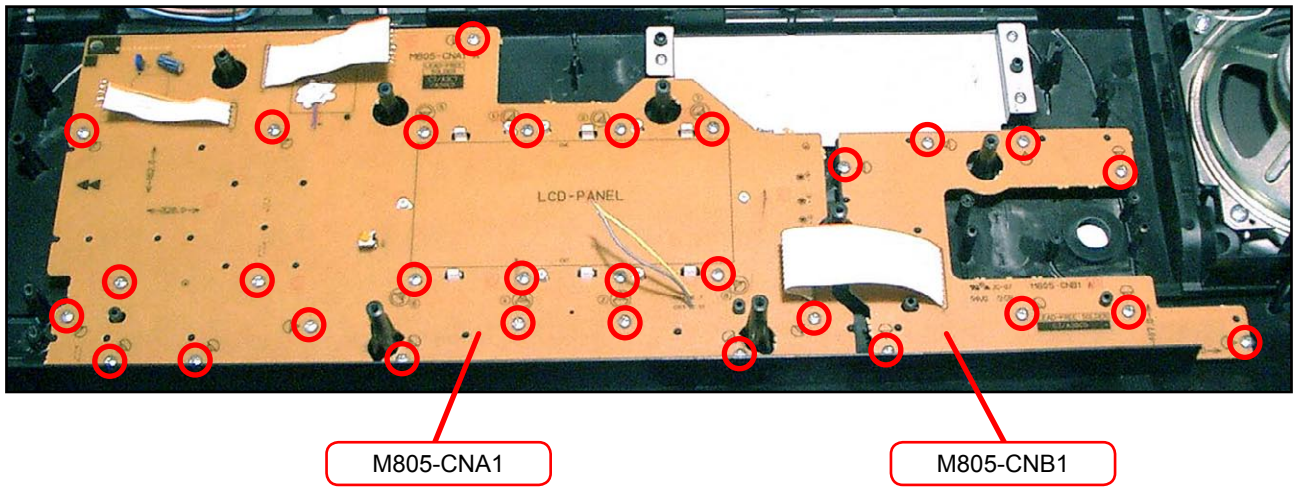


M805-SDA1

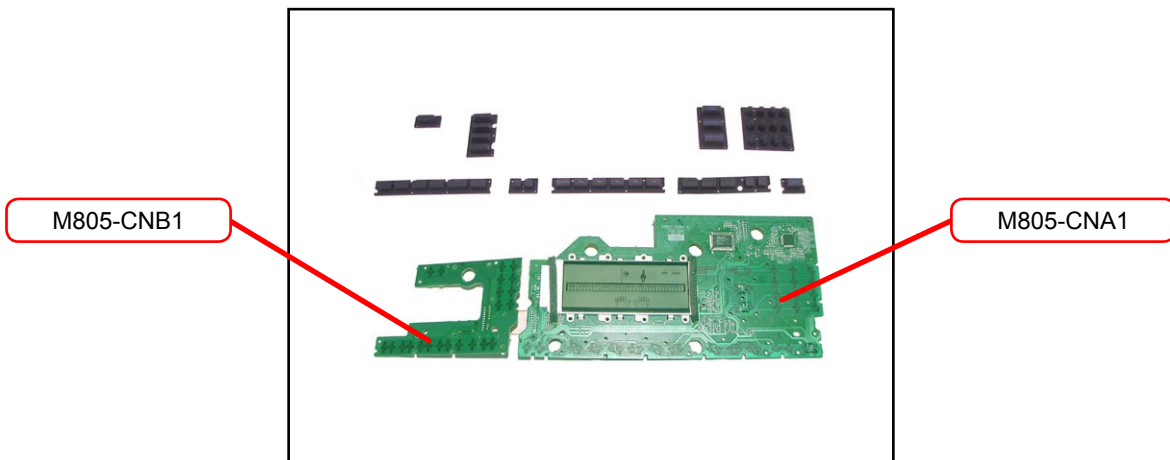
PCB-SPACER-M805

10. To remove the console PCBs (M805-CNA1, M805-CNB1).

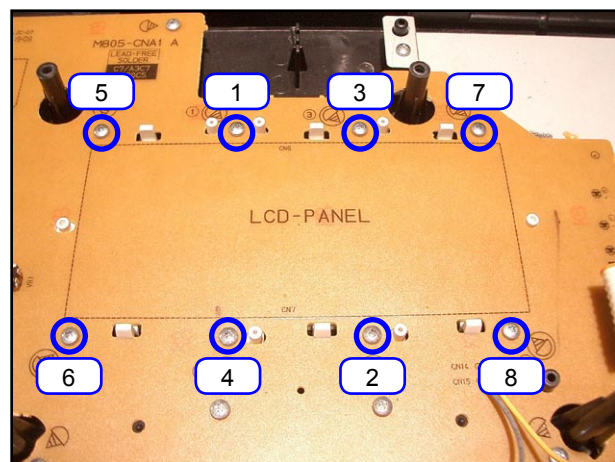
10-1. Remove 30 screws and then the PCBs (M805-CNA1 and M805-CNB1).



10-2. Remove the rubber keys.



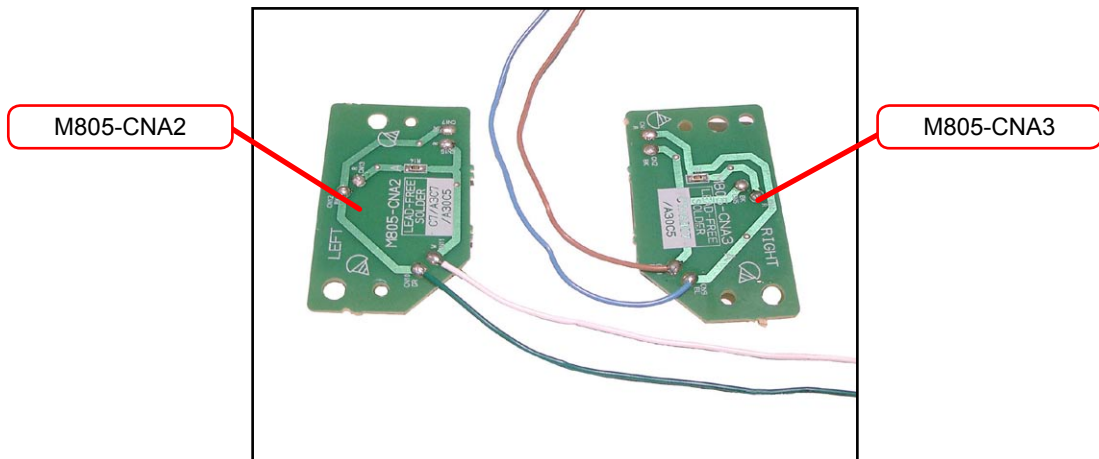
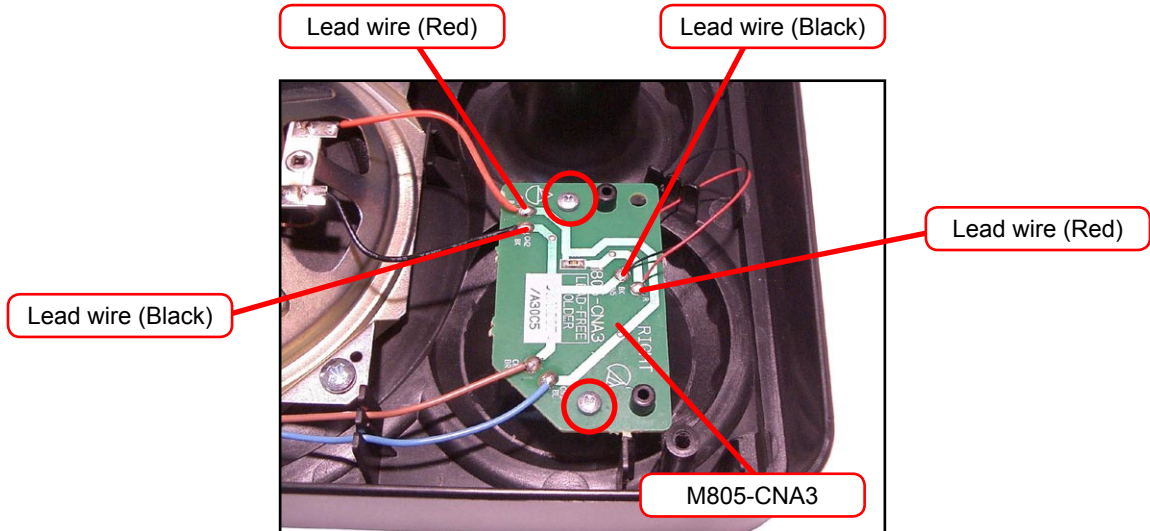
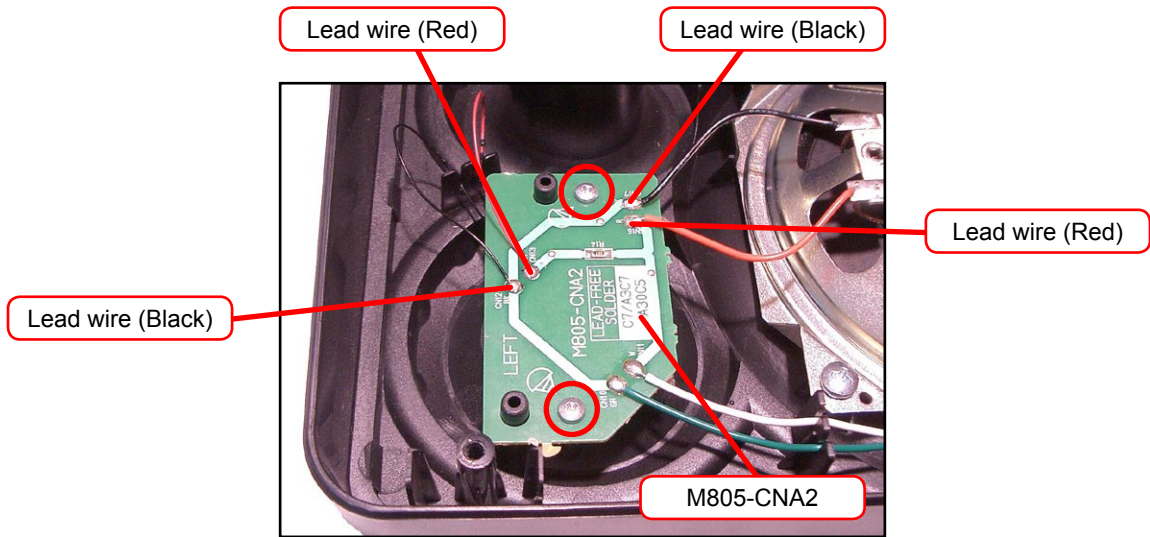
Caution while assembling:  
8 screws fixating the LCD unit must be screwed on in adesignated order. When assembling, be sure to tighten the screws in the order from 1 - 8 shown in the photo. Failing to do so may cause display malfunctions.



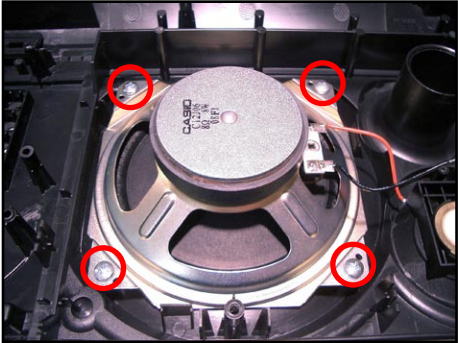
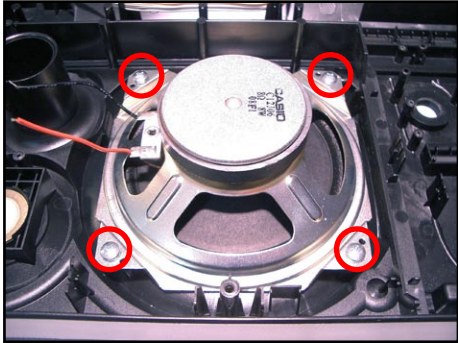
11. To remove the console PCBs (M805-CNA2, M805-CNB3).

11-1. Remove eight lead wires by soldering.

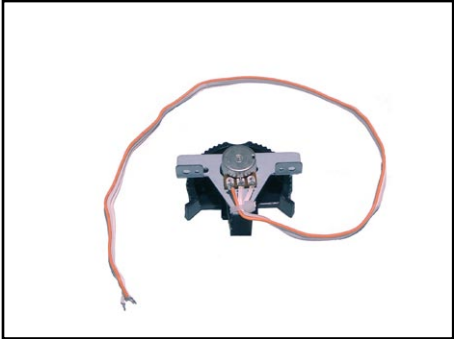
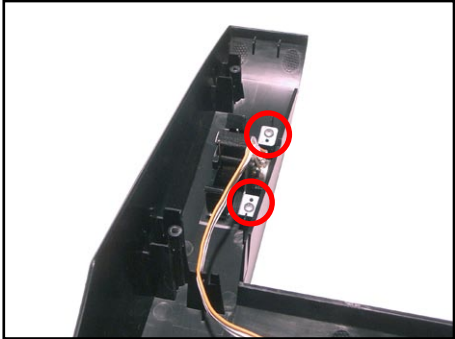
11-2. Remove four screws and then the PCBs (M805-CNA2 and M805-CNB3).



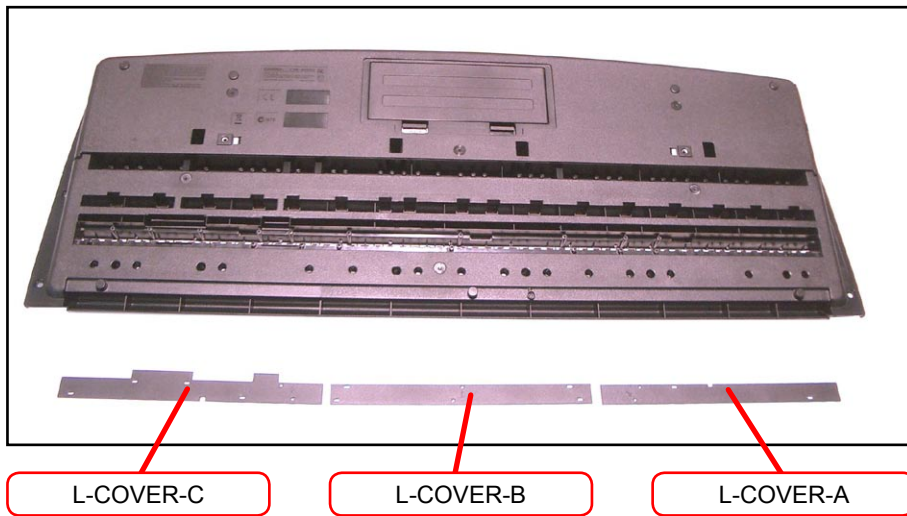
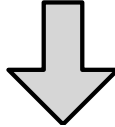
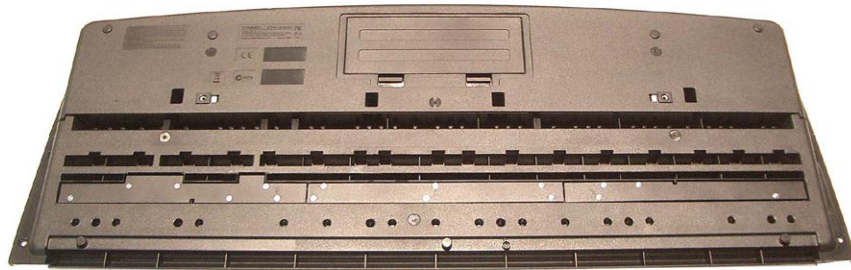
12. Remove eight screws and then two speakers.



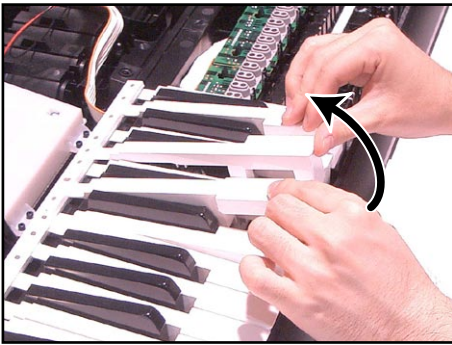
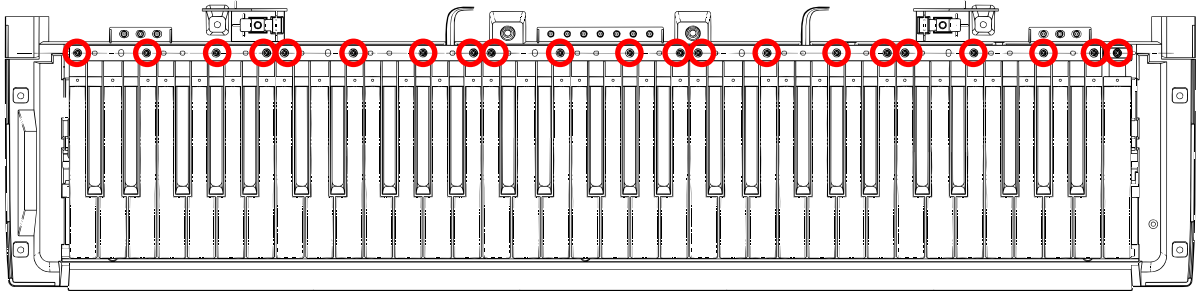
13. Remove two screws and then the pitch bend.



14. Remove 16 screws and then the L-COVER-A/B/C.



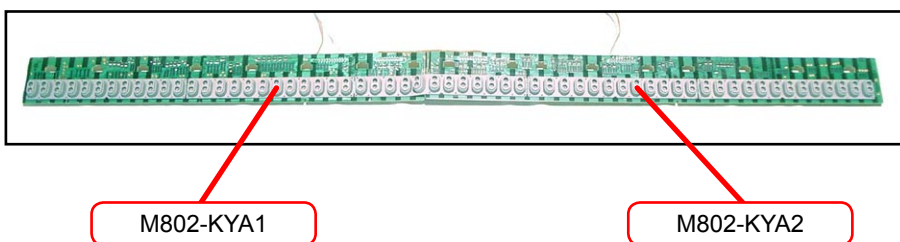
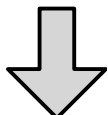
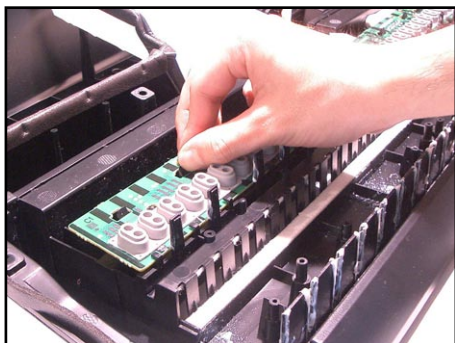
15. To remove the key PCBs (M800-KYA1/KYA2)  
15-1. Remove 21 screws and then the white keys.



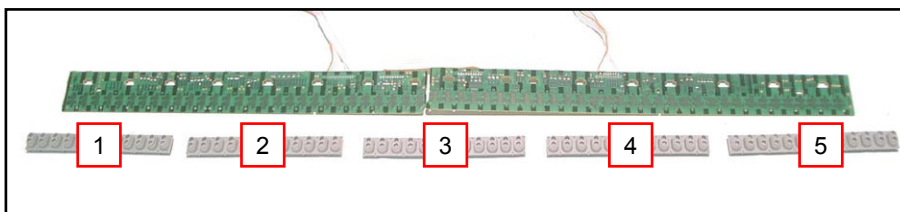
15-2. Remove the black keys.



15-3. Remove the hooks and then Key PCBs (M802-KYA1/KYA2).



15-4. Remove the rubber keys.

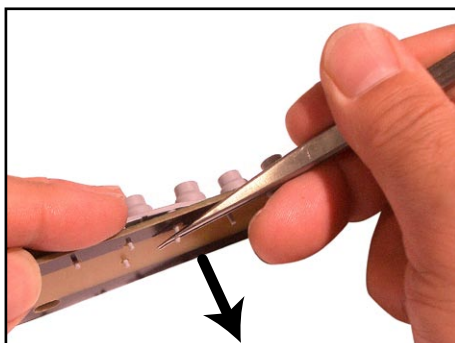


Caution while assembling:

There are two types of rubber keys and they are different in length.

The longest rubber key ( 5 ) must be installed at the right end.

How to install the rubber keys.



## DIAGNOSTIC PROGRAM

### ■ Initial Setting

1. Connect the AC adaptor.
2. "Main" volume: MAX
3. Prepare a PC\* with USB cable connected for USB check.
4. Insert a SD CARD.

#### \* Operating System

Windows® XP (SP2 or later)\*1

Windows Vista® \*2

Mac OS® X (10.3.9, 10.4.11 or later, 10.5.2 or later)

\*1: Windows XP Home Edition

Windows XP Professional (32-bit)

\*2: Windows Vista (32-bit)

### ■ How to start diagnostic program

1. Press and hold the "0", "1" and "2" buttons.
2. Press the "POWER" button.
3. The message "TESTMODE" is appears on LCD.



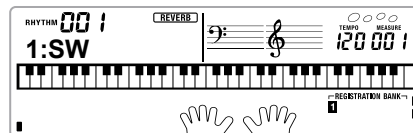
4. Release the "0", "1" and "2" buttons.



## ■ Diagnostic program

### 1. Button check and Bender check

- ① Press "1" button.

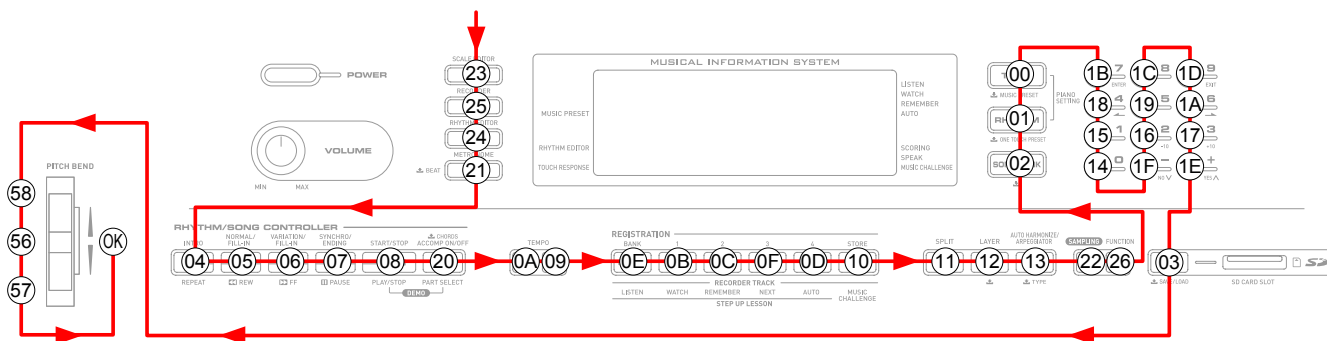
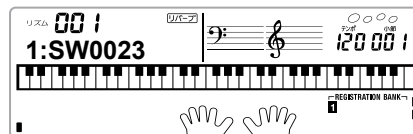


- ② Press the button in the order indicated in the illustration below. The button number will be displayed on the LCD.

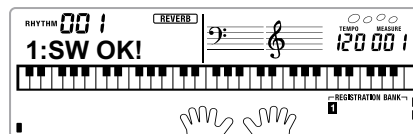
Example) SW00 + (the button number shown in the illustration)

If the switch function is OK: You will hear the OK sound signal and the button number will be displayed.

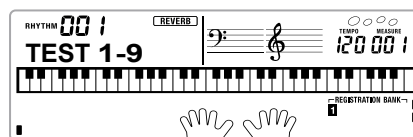
If the switch function is NG or switches were pressed in a wrong order: You will hear the NG sound signal and the button number will be displayed.



- ③ When the Bender Check is completed, the display shown on the right appears.



- ④ Press "0" to end the Button Check and Bender Check.



### 2. AC adaptor check

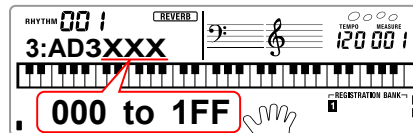
- ① Press "3" button.

Make sure that a value "XXX" shown in the illustration is in the range of 000 to 3FF.

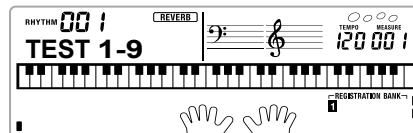


- ② Press "3" button.

Make sure that a value "XXX" shown in the illustration is in the range of 000 to 1FF.

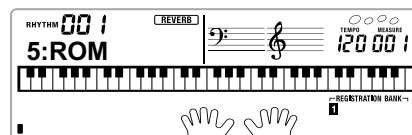


- ③ Press "0" to end the AC adaptor Check.

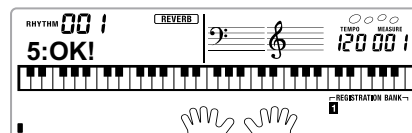


### 3. Memory check

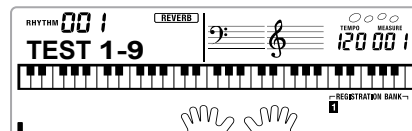
- ① Press "5" button. (ROM check)



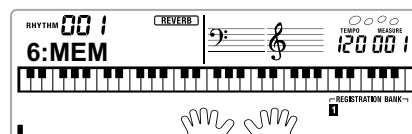
- ② Press "1" button.  
Check for "OK" message and sound signal.



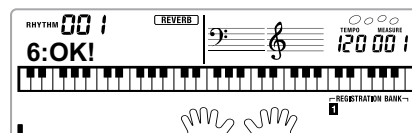
- ③ Press "0" to end the ROM Check.



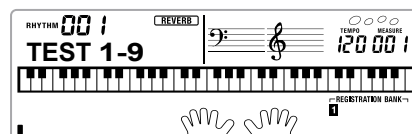
- ④ Press "6" button. (RAM check)



- ⑤ Press "1" button.  
Check for "OK" message and sound signal.

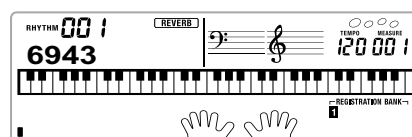


- ⑥ Press "0" to end the RAM Check.

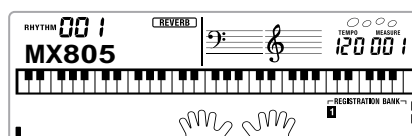


### 4. ROM Version and Model check

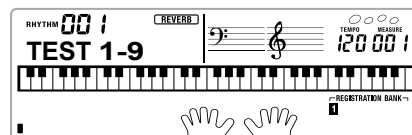
- ① Press "9" button. (ROM Version)  
"6943" or "7038" must be displayed.



- ② Press "9" button. (Model)  
"MX805" must be displayed.

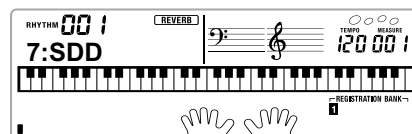


- ③ Press "0" to end the ROM Version and Model Check.

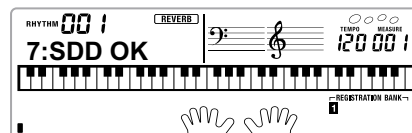


## 5. SD CARD check

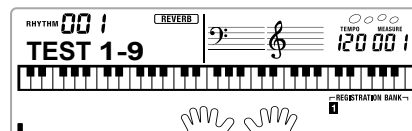
① Press "7" button.



② Press "1" button.

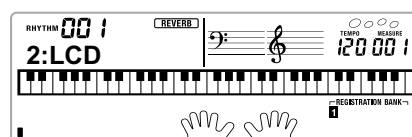


③ Press "0" to end the SD CARD Check.



## 6. LCD check

① Press "2" button.



② Press "2" button.

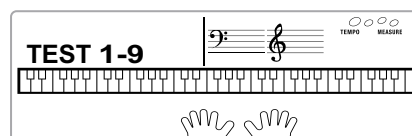
\* All dots and characters of LCD turn on.

\* There is no lack of the dot and the character.

③ Press "2" button.

\* LCD no display.

④ Press "0" to end the LCD Check.



## 7. USB check

\* Operating System

Windows® XP (SP2 or later)\*1

Windows Vista® \*2

Mac OS® X (10.3.9, 10.4.11 or later, 10.5.2 or later)

\*1: Windows XP Home Edition

Windows XP Professional (32-bit)

\*2: Windows Vista (32-bit)

① Connect CTK-5000 to the computer with a USB cable.

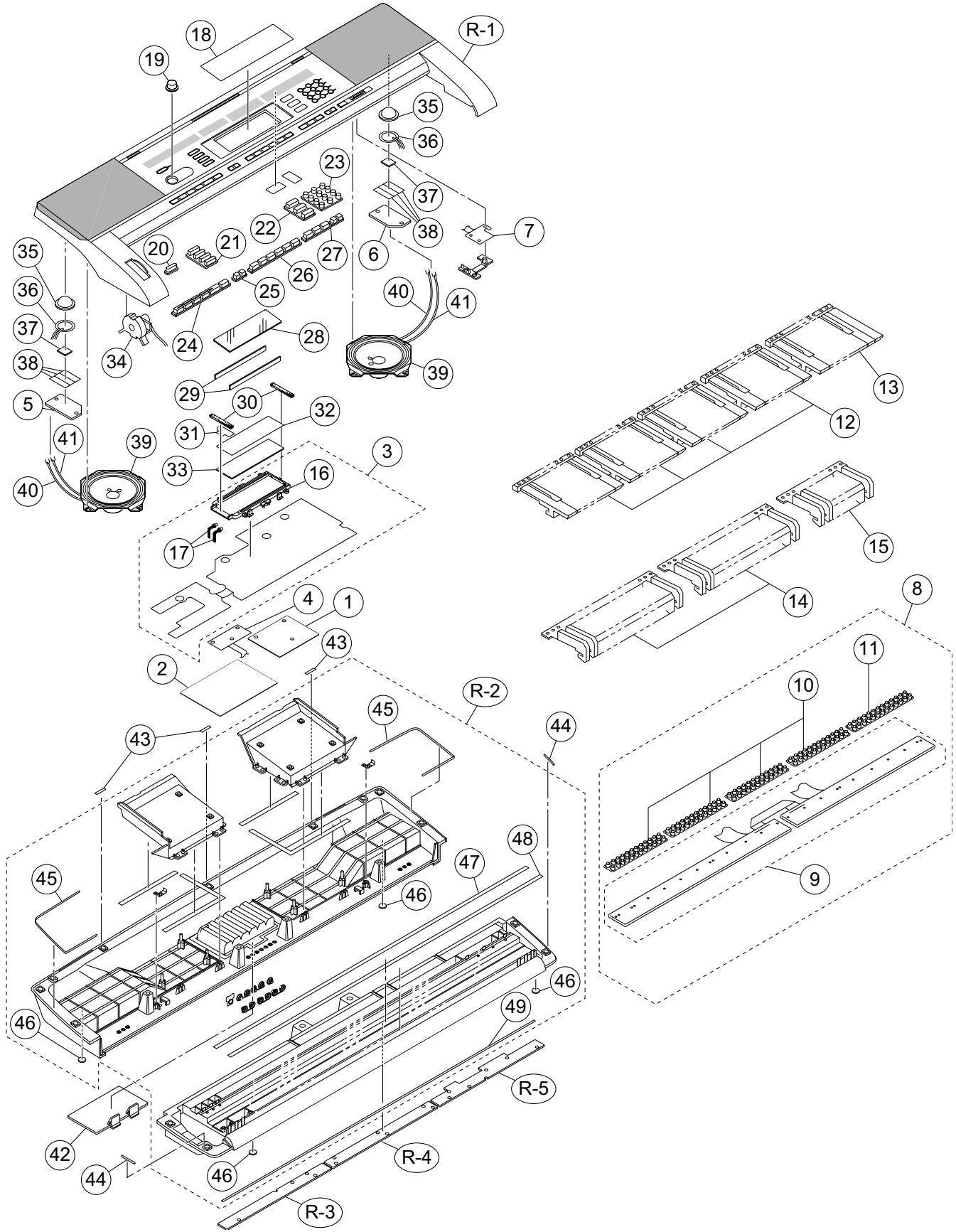
② Check that the message "USB AUDIO DEVICE" appears in "Device Manager" → "Sound, Video and Game Controller" on the computer monitor.

③ Disconnect the USB cable.

④ Check that the message "USB AUDIO DEVICE" disappears in "Device Manager" → "Sound, Video and Game Controller" on the computer monitor.

**DIAGNOSTIC PROGRAM IS FINISHED.**

# EXPLODED VIEW



# PARTS LIST

## CTK-5000

Notes: This parts list does not include the cosmetic parts, which parts are marked with item No. "R-X" in the exploded view.

Contact our spare parts department if you need these parts for refurbish.

1. Prices and specifications are subject to change without prior notice.
2. As for spare parts order and supply, refer to the "GUIDEBOOK for Spare parts Supply", published seperately.
3. The numbers in item column correspond to the same numbers in drawing.

- 1 CTK-5000\_DI
- 2 CTK-5000\_CHINA
- 3 CTK-5000\_EU
- 4 CTK-5000\_UK
- 5 CTK-5000\_US

N	Item	Parts No.	Parts Name	Specification	Q'TY					Price Code	R	Remarks
					1	2	3	4	5			
<b>Main PCB</b>												
N	1	10314393	PCB ASSY/MDA1	TK-RJM508831*001	1	1	1	1	1	CY	A	
	CN7	10236622	CONNECTOR	USB-4FBRS30NB2	1	1	1	1	1	AC	X	
	D1-D5	10276977	DIODE	L1SS400T1G	5	5	5	5	5	AA	X	
	IC5	10211950	IC	NJM2068M-D(Te1)	1	1	1	1	1	AC	C	
	IC8	10197554	IC	TC7SZ126FU(TE85L.F	1	1	1	1	1	AE	C	
	IC4	10197809	IC	TC7WH123FU(TE12L.F	1	1	1	1	1	AE	C	
	IC2	10098821	IC	XC6202P332PR	1	1	1	1	1	AD	C	
	IC6	10269340	IC	XC6403FY51PR	1	1	1	1	1	AE	C	
	IC9	10299049	LSI	LP62S16256GV55LLIF	1	1	1	1	1	BX	C	
N	IC1	10305133	LSI	MR27T12802L11ATA3A	1	1	1	1	1	BN	C	
	L11	10193074	COIL	DLW21HN181SQ2L	1	1	1	1	1	AC	X	
	L2,4,10	10089941	FERRITE BEAD	BLM21PG221SN1D	3	3	3	3	3	AA	X	
	L1,3,7	10238668	FERRITE BEAD	EBMS160808A102	3	3	3	3	3	AA	X	
	L13,14	10122963	COIL	BLM21AG102SN1D	2	2	2	2	2	AC	X	
<b>Sub PCB</b>												
N	2	10314394	PCB ASSY/PSA1	TK-RJM508833*001	1	1	1	1	1	CQ	B	
	FU3	10238345	FUSE	25H0500G	1	1	1	1	1	AC	C	
	IC1	10306512	IC	TDA7297	1	1	1	1	1	BF	C	
	J2	10206816	CONNECTOR	JY-6314*01-130	1	1	1	1	1	AA	C	Line out (Right)
	J1,7	10206815	CONNECTOR	JY-6314*01-030	2	2	2	2	2	AA	C	Line out (Left),Pedal
	J4	10210582	DC JACK	HEC2305-016920	1	1	1	1	1	AC	C	
	J5	10305131	CONNECTOR	ST-3529B	1	1	1	1	1	AO	C	Audio
	J6	10305218	CONNECTOR	JY-6316B*01-070	1	1	1	1	1	AI	C	Phone jack
	L6,7	10231919	COIL	RB53-856396NP	2	2	2	2	2	AA	X	
	L1,2,3,5,8,9	10231920	COIL	RB53-856397NP	6	6	6	6	6	AA	X	
	Q12	10206835	TRANSISTOR	KTA1046-Y-U/P	1	1	1	1	1	AE	X	
	D1,7,10,11	10276977	DIODE	L1SS400T1G	4	4	4	4	4	AA	X	
	IC101,104,105,106	10211950	IC	NJM2068M-D(Te1)	4	4	4	4	4	AC	X	
	Q7	10216428	TRANSISTOR	KTA1666-Y-RTF/P	1	1	1	1	1	AB	X	
	Q1,4,5,8,9,10,11	10207675	TRANSISTOR	KTC4075-GR-RTK/P	7	7	7	7	7	AA	X	
N	D6	10309474	DIODE	LUDZS5.1BT1G	1	1	1	1	1	AB	X	
	D2,3	10308381	DIODE	LUDZS7.5BT1G	2	2	2	2	2	AA	X	
N	D4,5	10215217	DIODE	RSX051VA-30TR	2	2	2	2	2	AA	X	
	D8,9	10294394	DIODE	SK34A	2	2	2	2	2	AD	X	
	IC3	10306415	IC	BH3547F-E2	1	1	1	1	1	AG	X	
	Q2,3	10213764	TRANSISTOR	2SD2351T106W	2	2	2	2	2	AA	X	
<b>Console PCBs</b>												
N	3	10314398	BL ASSY	TK-RJM509006*001	1	1	1	1	1	CZ	C	
	IC2	10159709	LSI	UPD65881GK-1019ETA	1	1	1	1	1	AT	C	
	VR1	69304870	VARIABLE R	EVND8AA03B53	1	1	1	1	1	AA	C	
	X1	10093909	CERAMIC OSCILLATOR	CSBLA1M00J58-B0	1	1	1	1	1	AC	X	
	D4,5,6	10209564	LED	KPTD-3216SURCK	3	3	3	3	3	AA	X	
	IC1	10222381	LSI	ST7066U-0A-QG	1	1	1	1	1	AU	X	
	Q2,3,4	10202670	TRANSISTOR	KTA2014-GR-RTK/P	3	3	3	3	3	AA	X	
	Q1	10207675	TRANSISTOR	KTC4075-GR-RTK/P	1	1	1	1	1	AA	X	
N	4	10314399	PCB ASSY/CNB2	TK-RJM508842*001	1	1	1	1	1	BW	C	
	VR1	10123103	VARIABLE RESISTOR	RK09K12C0D1B	1	1	1	1	1	AH	X	
N	5	10314400	PCB ASSY/CNA2	TK-RJM508837*001	1	1	1	1	1	CE	X	
N	6	10314404	PCB ASSY/CNA3	TK-RJM508839*001	1	1	1	1	1	CE	X	
N	7	10310711	PCB ASSY/SDA1	TK-RJM508844*001	1	1	1	1	1	CE	C	

Notes : Q - Quantity per unit  
R - Rank

- 1 CTK-5000\_DI
- 2 CTK-5000\_CHINA
- 3 CTK-5000\_EU
- 4 CTK-5000\_UK
- 5 CTK-5000\_US

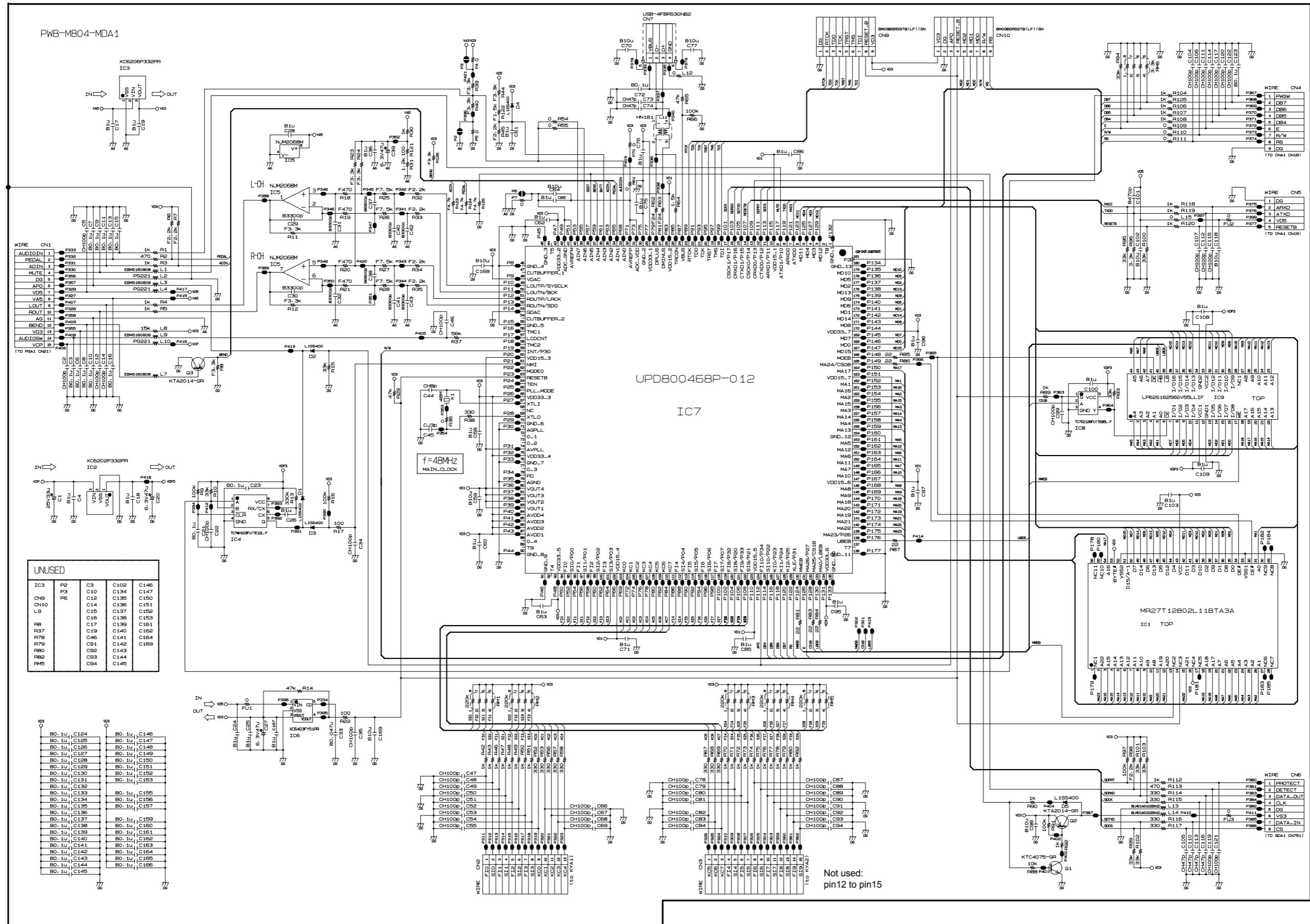
N	Item	Parts No.	Parts Name	Specification	Q'TY					Price Code	R	Remarks
					1	2	3	4	5			
<b>Keyboard PCBs</b>												
	8	10304697	PCB ASSY/KEY/RUBBER	TK-RJM508598*001	1	1	1	1	1	CJ	C	
	9	10304698	PCB ASSY/KYA	TK-RJM508618*001	1	1	1	1	1	CE	C	
	D1-D61	10294400	DIODE	LM1MA142WKT1G	61	61	61	61	61	AA	X	
<b>Keyboard Unit</b>												
	10	10269451	RUBBER/CONTACT/CB	RJM507656-001V01	4	4	4	4	4	AG	B	
	11	10270393	RUBBER/CONTACT/CS	RJM507657-001V01	1	1	1	1	1	AG	B	
	12	10249864	WHITE KEY/SET/CB	TK-RJM507243*001	4	4	4	4	4	BB	C	
	13	10249865	WHITE KEY/SET/CS	TK-RJM507244*001	1	1	1	1	1	BD	C	
	14	10274032	BLACK KEY/10P	RJM506595-001V02	2	2	2	2	2	AL	C	
	15	10247548	BLACK KEY/5P	RJM506595-002V01	1	1	1	1	1	AE	C	
<b>Case Unit</b>												
	16	10131110	REFLECTOR	RJM502577-001V01	1	1	1	1	1	AC	C	
	17	10308432	LED	SLR343BD2T3F	2	2	2	2	2	AS	C	
N	18	10309783	PLATE/DISPLAY	RJM508689-005V01	1	1	1	1	1	AJ	C	
	19	10174514	KNOB/ROTARY	RJM502503-008V01	1	1	1	1	1	AA	C	
N	20	10309774	RUBBER/KEY/A	RJM508680-004V01	1	1	1	1	1	AE	C	
N	21	10309775	RUBBER/KEY/B	RJM508681-003V01	1	1	1	1	1	AK	C	
N	22	10309776	RUBBER/KEY/C	RJM508682-004V01	1	1	1	1	1	AM	C	
N	23	10309777	RUBBER/KEY/D	RJM508683-004V01	1	1	1	1	1	AM	C	
N	24	10309778	RUBBER/KEY/E	RJM508684-003V01	1	1	1	1	1	AM	C	
N	25	10309779	RUBBER/KEY/F	RJM508685-003V01	1	1	1	1	1	AD	C	
N	26	10309780	RUBBER/KEY/G	RJM508686-004V01	1	1	1	1	1	AM	C	
N	27	10309781	RUBBER/KEY/H	RJM508687-003V01	1	1	1	1	1	AE	C	
	28	10308433	LCD	TY11239N-C0025/08	1	1	1	1	1	BL	C	
	29	10203058	CONNECTOR	RJM505822-001V01	2	2	2	2	2	AD	C	
	30	10037738	SPONGE	M441167-1	2	2	2	2	2	AA	C	
	31	10131094	TOP PIECE	RJM502565-001V01	1	1	1	1	1	AA	C	
	32	10250780	FILM	RJM507061-001V01	1	1	1	1	1	AA	C	
	33	10248119	PLATE/BL	RJM506818-001V01	1	1	1	1	1	AL	C	
	34	10310582	BENDER ASSY	TK-RJM507944*003	1	1	1	1	1	BR	X	
N	35	10309766	CAP	HM-2723CAP	2	2	2	2	2	AB	X	
N	36	10309765	BUZZER	HM-2720MYLAR	2	2	2	2	2	AE	X	
	37	69251880	SPONGE	M440349-1	2	2	2	2	2	AA	X	
N	38	10259884	PACKING	M441333-001V01	6	6	6	6	6	AC	X	
N	39	10309764	SPEAKER	C12J06	2	2	2	2	2	CN	C	
N	40	10309763	WIRE	1007TASC24060R3030	2	2	2	2	2	AC	X	Red
N	41	10309762	WIRE	1007TASC24060K3030	2	2	2	2	2	AC	X	Black
N	42	10314391	COVER ASSY/BATTERY	TK-M341288*008	1	1	1	1	1	BM	C	
	43	10305236	HIMELON	M411136-003V03	3	3	3	3	3	AA	X	
	44	10214396	PACKING	RJM506032-001V01	2	2	2	2	2	AA	X	
N	45	10248668	PACKING	RJM507195-001V01	2	2	2	2	2	AF	X	
	46	69226920	FOOT/RUBBER	M41361-6	4	4	4	4	4	AA	X	
N	47	10301471	CUSHION	RJM508593-001V01	1	1	1	1	1	AJ	C	
N	48	10304864	DAMPER/KB	RJM507745-002V01	1	1	1	1	1	AC	C	
N	49	10205015	CUSHION	M440342-001V02	1	1	1	1	1	AC	C	
<b>ACCESSORIES</b>												
	-	10025472	STAND/MUSIC	M141071-1	1	1	1	1	1	AT	C	
<b>REFURBISH</b>												
N	R-1	10314397	CASE ASSY/UPPER	TK-RJM508712*005	1	1	1	1	1	DF	C	
N	R-2	10314396	CASE UNIT/MAIN	TK-RJM508715*004	1	1	1	1	1	DG	C	
	R-3	10302799	L COVER/A	RJM508655-001V01	1	1	1	1	1	AD	C	
	R-4	10302800	L COVER/B	RJM508656-001V01	1	1	1	1	1	AD	C	
	R-5	10302801	L COVER/C	RJM508657-001V01	1	1	1	1	1	AD	C	

Notes : Q - Quantity per unit

R - Rank

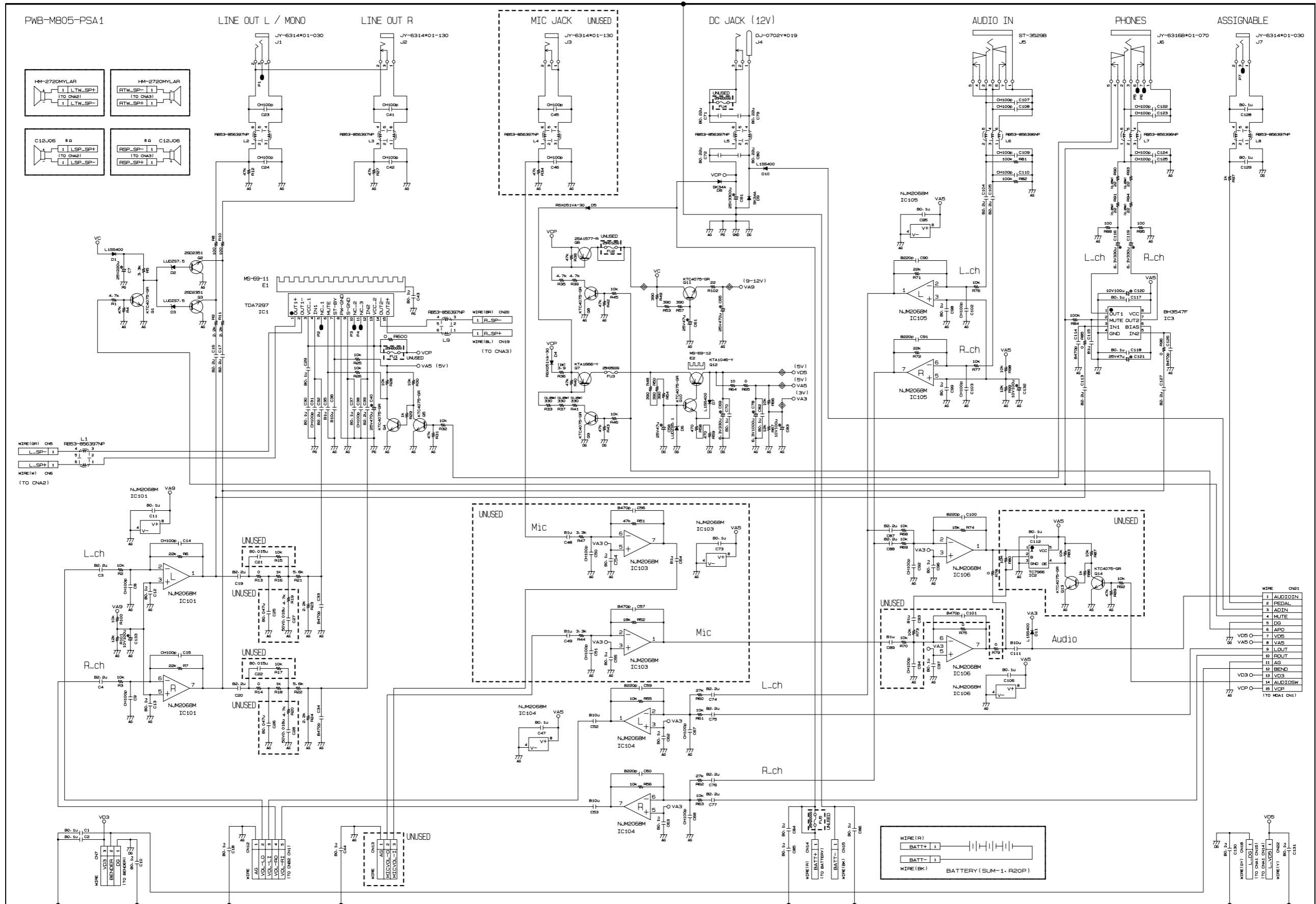
# SCHEMATIC DIAGRAMS

## Main PCB M804-MDA1

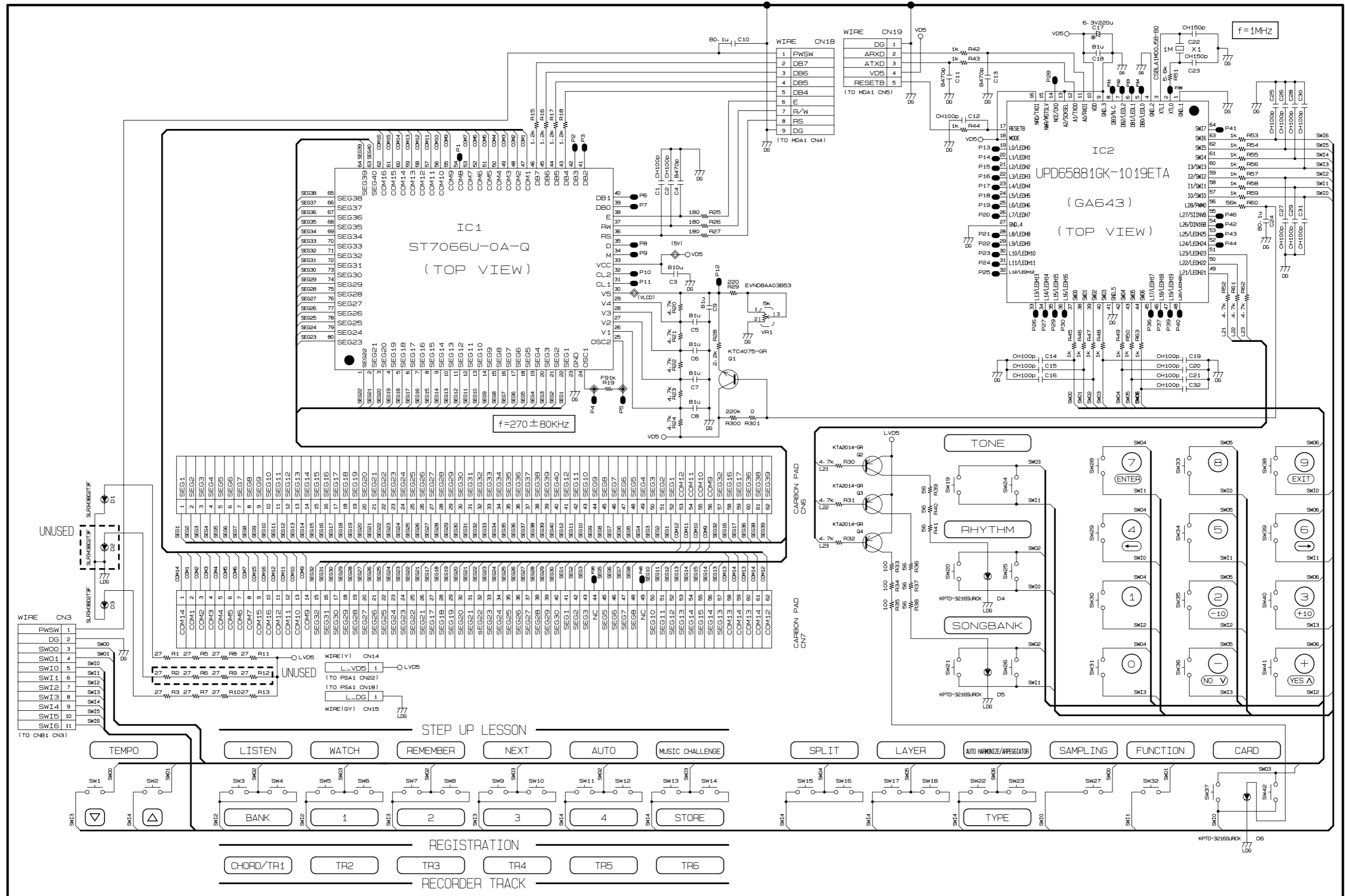




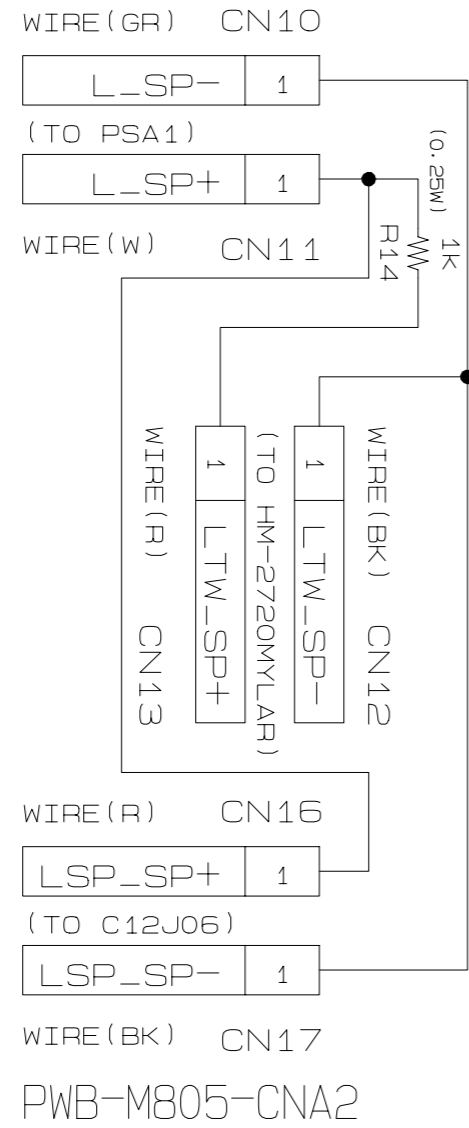
Sub PCB M805-PSA1



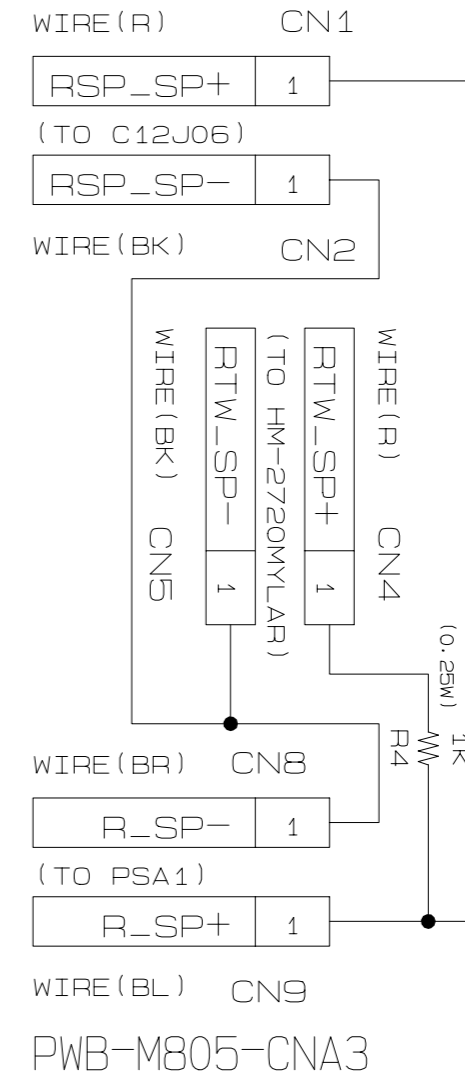
Console PCB M805-CNA1



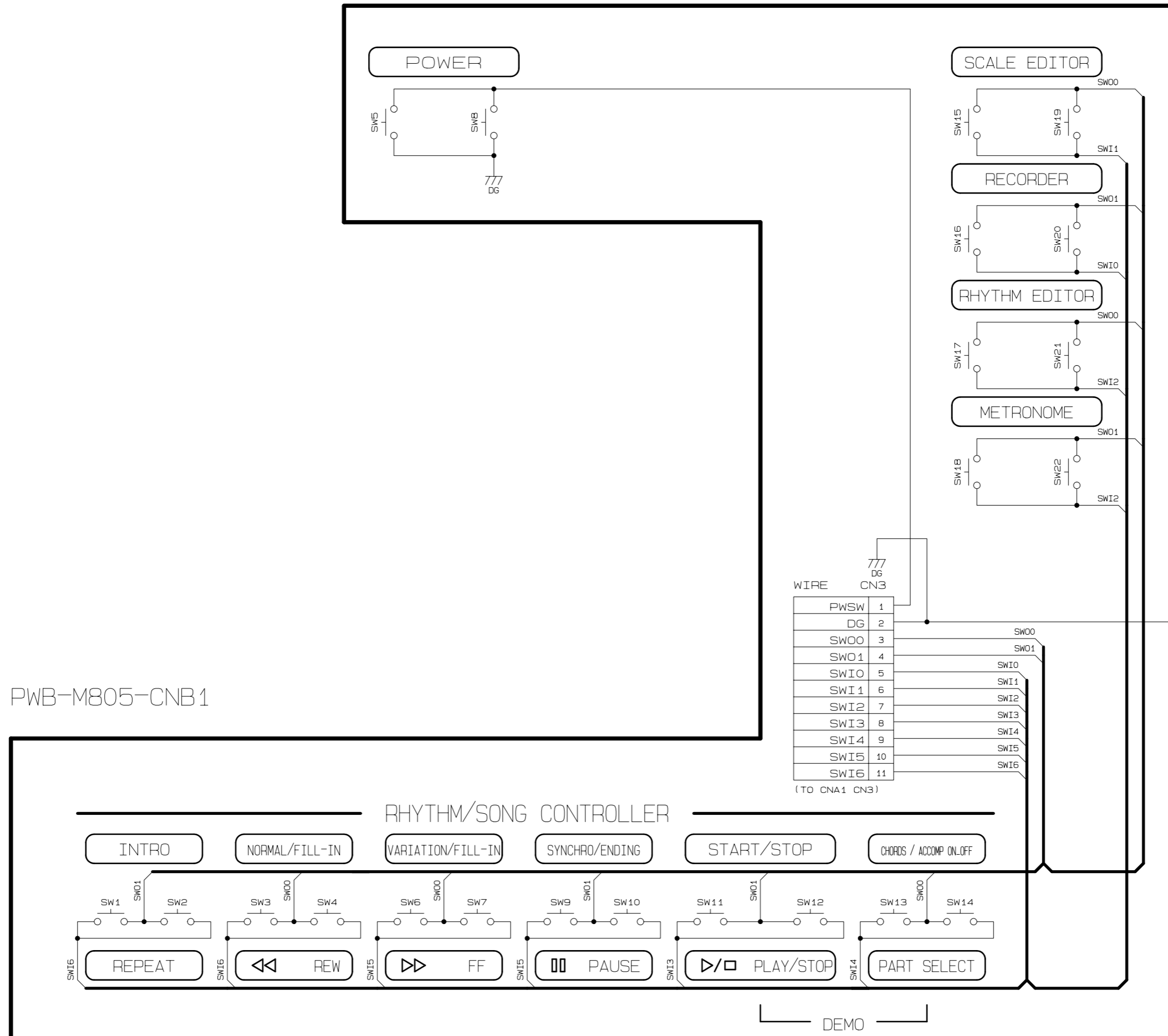
Console PCB M805-CNA2



Console PCB M805-CNA3



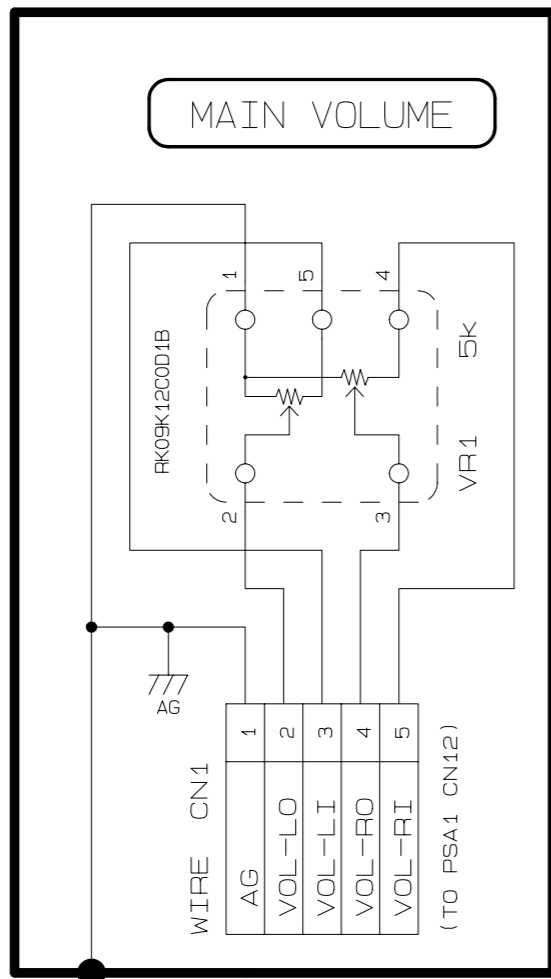
Console PCB M805-CNB1



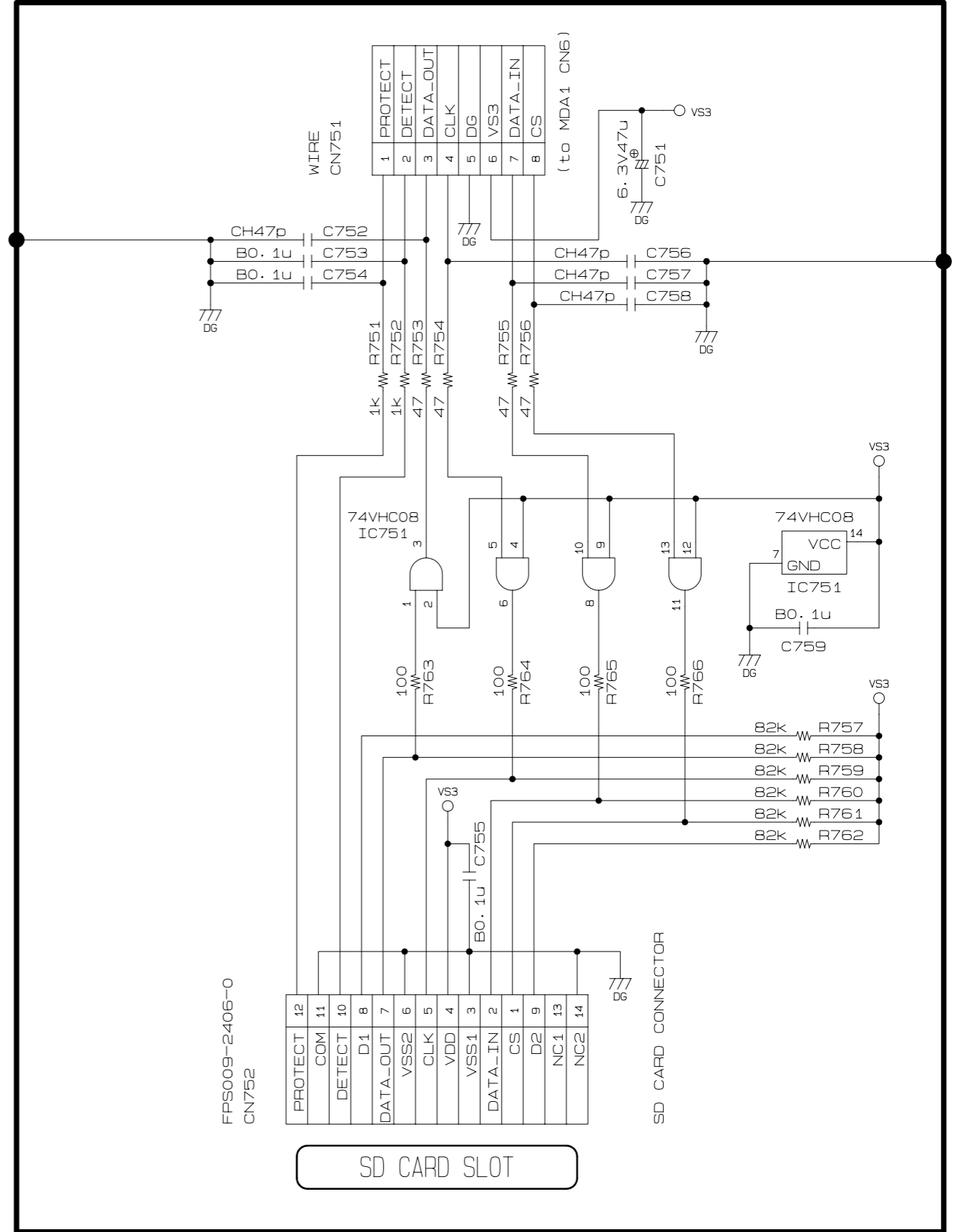
PWB-M805-CNB1

Console PCB M805-CNB2

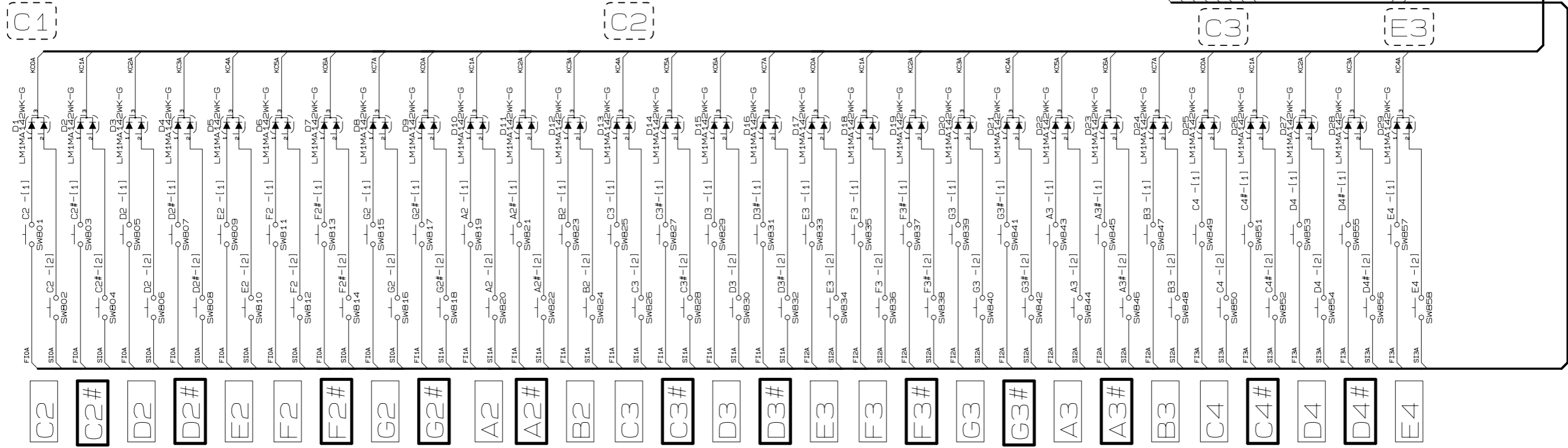
PWB-M805-CNB2



Console PCB M805-SDA1



Console PCB M802-KYA1



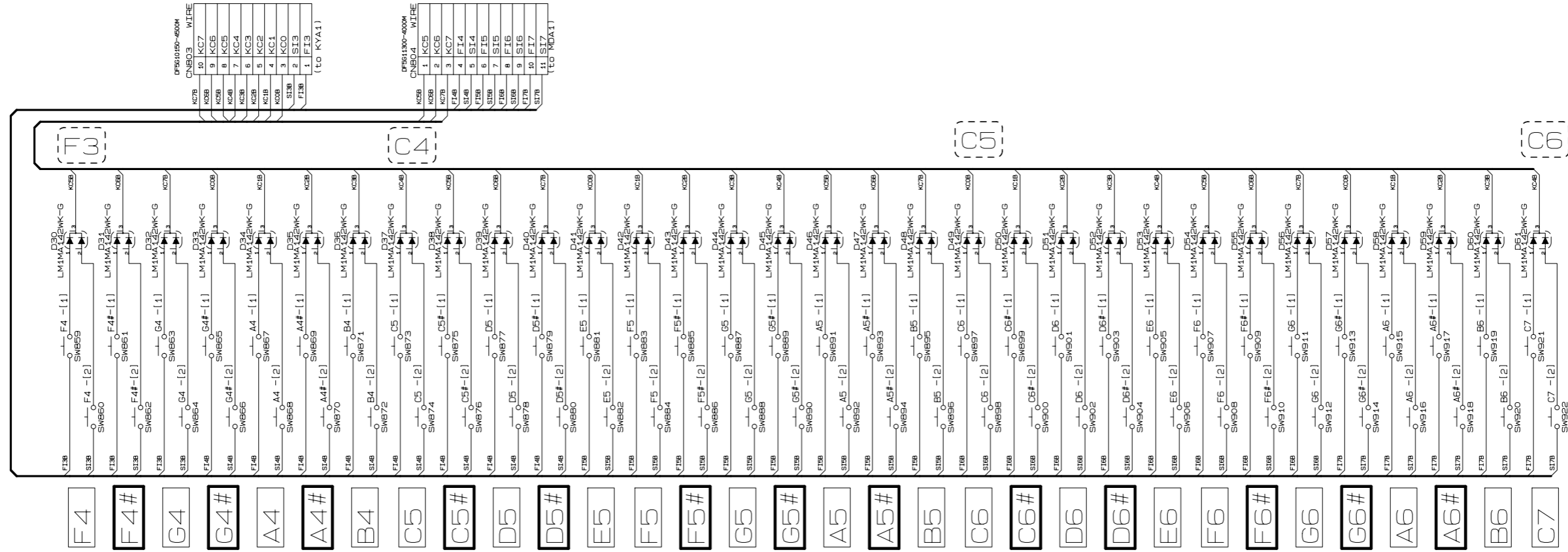
M802-KYA1

DF5613460-400M	
FNBO1	WIRES
1	F10
2	S10A
3	F11A
4	S11A
5	F12A
6	S12A
7	F13A
8	S13A
9	K00A
10	K01A
11	K02A
12	K03A
13	K04A
14	K05A
15	K06A
16	K07A

DF5610150-400M	
FNBO2	WIRES
1	F13A
2	S13A
3	K00A
4	K01A
5	K02A
6	K03A
7	K04A
8	K05A
9	K06A
10	K07A

Keyboard PCB M802-KYA2



M802-KYA2

Ver.1 : Oct. 2008

- Addition of The CONTENTS
- Addition of The DISASSEMBLY (P9 to P19)
- Addition of The DIAGNOSTIC PROGRAM (P20 to P23)

Ver.2 : Nov. 2008

- Correction of The PCB LAYOUT (P4)
- Correction of The PRINTED CIRCUIT BOARDS (P8)

Ver.3 : Dec. 2008

- Addition of The CONTENTS
- Correction of The BLOCK AND WIRING DIAGRAM (P3)
- Correction of The PCB LAYOUT (P4)
- Addition of The CIRCUIT DESCRIPTION (P5 to P6)
- Correction of The DIAGNOSTIC PROGRAM (P24)

Ver.4 : Apr. 2009

- Correction of The PARTS LIST (P28)

**CASIO COMPUTER CO.,LTD.**

Overseas Service Division

6-2, Hon-machi 1-Chome  
Shibuya-ku, Tokyo 151-8543, Japan