

CASIO®

Service Manual

(without price)

PX-110

AUG. 2005



PX-110

ELECTRONIC KEYBOARD

Ver.4 : Feb. 2009

CONTENTS

Specifications	1
Block Diagram	2
Circuit Description	3
Printed Circuit Board	5
Disassembly	7
Diagnostic Program	12
Schematic Diagrams	14
Exploded View	21
Parts List	22

SPECIFICATIONS

GENERAL

Keyboard:	88 piano keys (with touch response)
Polyphony:	32 notes, maximum
Tones:	11; with layer, split
Digital Effects:	Reverb (4 types), Chorus (4 types), DSP, Brilliance
Metronome:	<ul style="list-style-type: none">• Time Signatures: 0, 2, 3, 4, 5, 6• Tempo Range: 30 to 255
Auto Accompaniment:	<ul style="list-style-type: none">• Number of Rhythms: 20• Tempo Range: 30 to 255• Controllers: START/STOP, INTRO/ENDING, SYNCHRO/FILL-IN• Modes: Normal, CASIO CHORD, FINGERED, FULL RANGE CHORD• Accompaniment Volume: Adjustable
Music Library:	<ul style="list-style-type: none">• Number of Tunes: 60• Tune Volume: Adjustable• Demo: Sequential looping of all 60 preset tunes• Part On/Off: Left hand, right hand
Song Memory:	<ul style="list-style-type: none">• Operations: Real-time recording, playback• Capacity: Approximately 10,000 notes (2 tracks total)• Memory Backup: Built-in lithium battery (Battery Life: 5 years)
Pedals:	Damper, Soft/Sostenuto (Selectable)
Other Functions:	<ul style="list-style-type: none">• Touch: 3 types, off• Transpose: 1 octave (F[#] to C to F)• Tuning: A4 = 440.0Hz ±50 cents (adjustable)
MIDI:	16 multi-timbre receive
Input/Output:	<ul style="list-style-type: none">• Headphones: Stereo mini jacks x 2 Output Impedance: 170Ω Output Voltage: 5.5V (RMS) MAX• Pedal: Standard jacks x 2• Power: 12V DC• MIDI (OUT) (IN)• Pedal connector (for optional SP-30 only)
Speakers:	(12cm x 6cm OVAL) x 2 (Output: 8.0W + 8.0W)
Power Supply:	AC Adaptor: AD-12
Power Consumption:	12V --- 18W
Dimensions:	132.3 x 27.8 x 13.2 cm (52 ¹ / ₁₆ x 10 ¹⁵ / ₁₆ x 5 ³ / ₁₆ inch)
Weight:	Approximately 11.9 kg (26.2 lbs)
	<ul style="list-style-type: none">• Design and specifications are subject to change without notice.

ELECTRICAL

Load condition

Current drain with 12 V DC:

Speaker: 6 Ω Real Load

Volume: maximum

Tone: STRINGS

Keys: A1 - C4, 32poly

Consumption Current

1750 mA ± 20 %

Consumption Current at idle

220 mA ± 20 %

Speaker output level (V_{rms} with 6 Ω load each channel):

Tone: TEST MODE (Sin wave MAX)

Velocity: maximum

L ch: 3450 mV ± 20 %

R ch: 3400 mV ± 20 %

Phone output level (V_{rms} with 32 Ω load each channel):

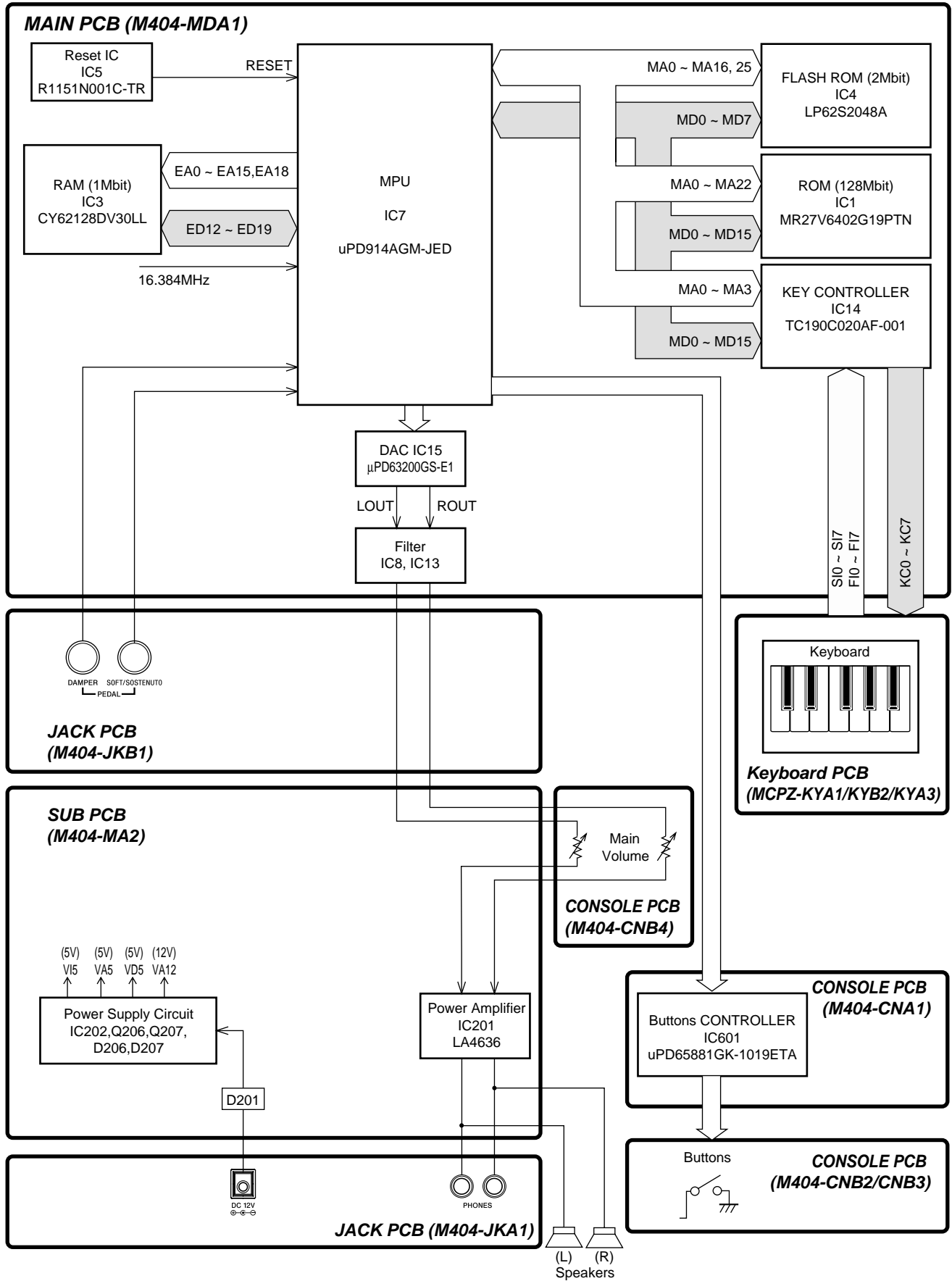
Tone: TEST MODE (Sin wave MAX)

Velocity: maximum

L ch: 415 mV ± 20 %

R ch: 420 mV ± 20 %

BLOCK DIAGRAM

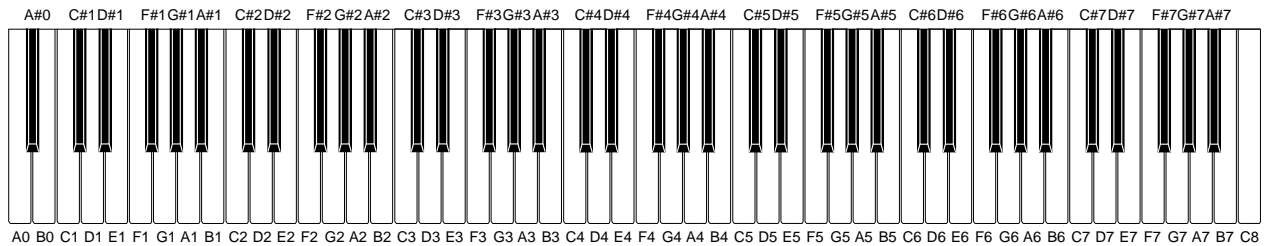


CIRCUIT DESCRIPTION

KEY MATRIX

	KC0	KC1	KC2	KC3	KC4	KC5	KC6	KC7
FI0	A0①	A0#①	B0①	C1①	C1#①	D1①	D1#①	E1①
SI0	A0②	A0#②	B0②	C1②	C1#②	D1②	D1#②	E1②
FI1	F1①	F1#①	G1①	G1#①	A1①	A1#①	B1①	C2①
SI1	F1②	F1#②	G1②	G1#②	A1②	A1#②	B1②	C2②
FI2	C2#①	D2①	D2#①	E2①	F2①	F2#①	G2①	G2#①
SI2	C2#②	D2②	D2#②	E2②	F2②	F2#②	G2②	G2#②
FI3	A2①	A2#①	B2①	C3①	C3#①	D3①	D3#①	E3①
SI3	A2②	A2#②	B2②	C3②	C3#②	D3②	D3#②	E3②
FI4	F3①	F3#①	G3①	G3#①	A3①	A3#①	B3①	C4①
SI4	F3②	F3#②	G3②	G3#②	A3②	A3#②	B3②	C4②
FI5	C4#①	D4①	D4#①	E4①	F4①	F4#①	G4①	G4#①
SI5	C4#②	D4②	D4#②	E4②	F4②	F4#②	G4②	G4#②
FI6	A4①	A4#①	B4①	C5①	C5#①	D5①	D5#①	E5①
SI6	A4②	A4#②	B4②	C5②	C5#②	D5②	D5#②	E5②
FI7	F5①	F5#①	G5①	G5#①	A5①	A5#①	B5①	C6①
SI7	F5②	F5#②	G5②	G5#②	A5②	A5#②	B5②	C6②
FI8	C6#①	D6①	D6#①	E6①	F6①	F6#①	G6①	G6#①
SI8	C6#②	D6②	D6#②	E6②	F6②	F6#②	G6②	G6#②
FI9	A6①	A6#①	B6①	C7①	C7#①	D7①	D7#①	E7①
SI9	A6②	A6#②	B6②	C7②	C7#②	D7②	D7#②	E7②
FI10	F7①	F7#①	G7①	G7#①	A7①	A7#①	B7①	C8①
SI10	F7②	F7#②	G7②	G7#②	A7②	A7#②	B7②	C8②

NOMENCLATURE OF KEYS



BUTTON MATRIX

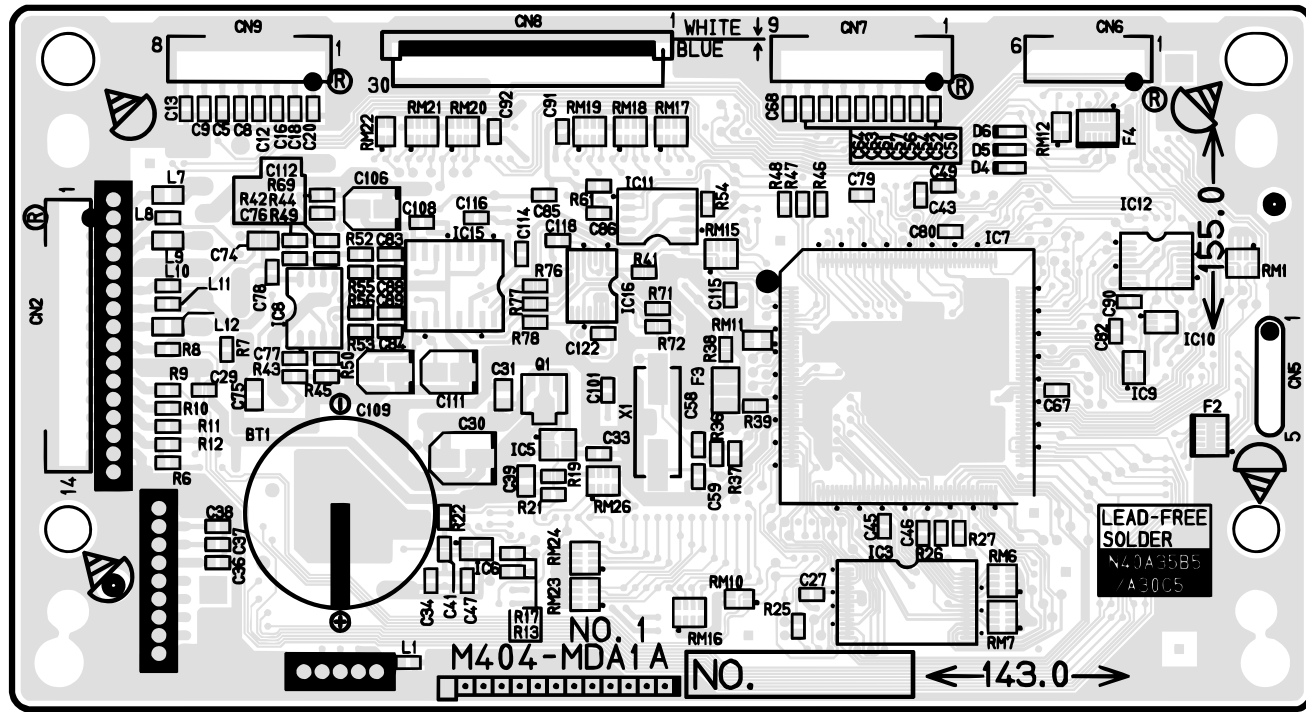
	SI0	SI1	SI2	SI3	SI4	SI5	SI6	SI7
SC0	SONG MEMORY	TRACK	RHYTHM (USER SONG)	START/ STOP (DEMO)				
SC1	SYNCHRO/ FILL-IN	INTRO/ ENDING	METRONOME					FUNCTION
SC2	GRAND PIANO 1	ELEC PIANO 1	HARPSI- CHORD	PIPE ORGAN	STRINGS			
SC3	GRAND PIANO 2	ELEC PIANO 2	VIBRA- PHONE	PERC ORGAN	ACOUSTIC BASS			
SC4							CHORUS	
SC5								SPLIT
SC6								REVERB

LED MATRIX

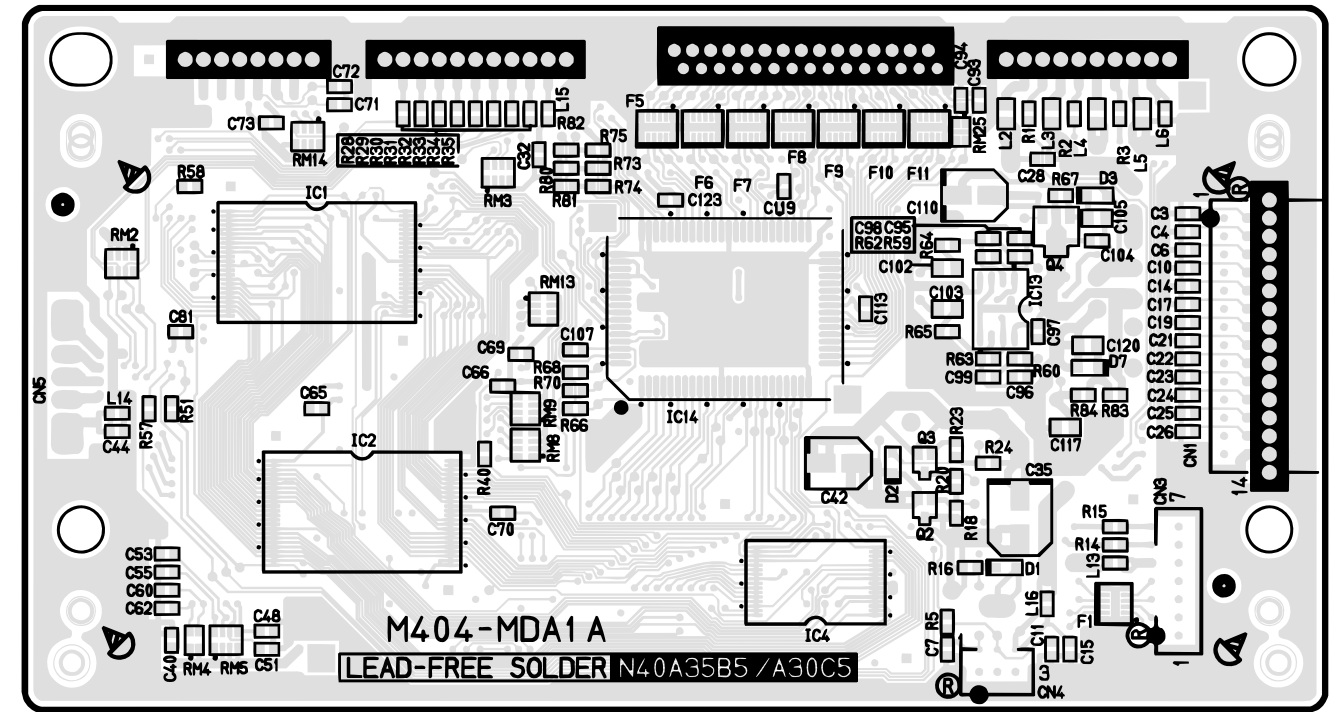
	LH9	LH10	LH11	LH12	LH13	LH14	LH15	LH23	LH24	LH25
LL0	VARIATION	CHORUS	GRAND PIANO 1	ELEC PIANO 2	PIPE ORGAN	ACOUSTIC BASS		REC	TRACK 1 /L	START/ STOP (RIGHT)
LL1	SPLIT		GRAND PIANO 2	HARPSI- CHORD	PERC ORGAN			PLAY	MUSIC LIBRARY	START/ STOP (LEFT)
LL2	REVERB		ELEC PIANO 1	VIBRA- PHONE	STRINGS			TRACK 2 /R	RHYTHM	FUNCTION

PRINTED CIRCUIT BOARDS

MAIN PCB M404-MDA1

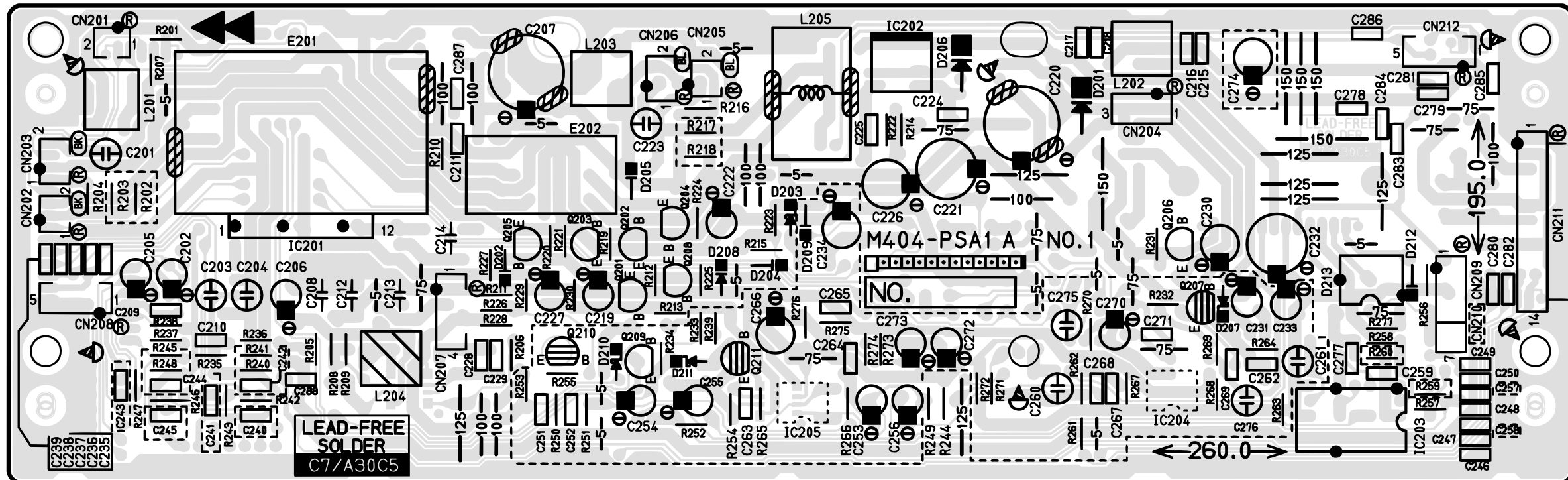


Top view

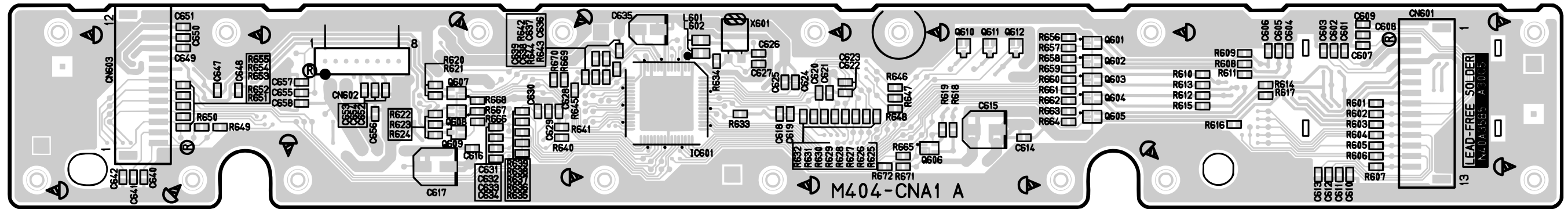


Bottom view

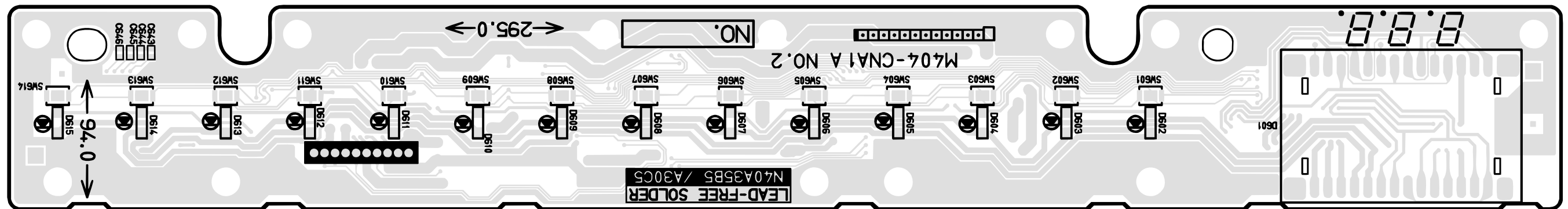
SUB PCB M404-PSA1



CONSOLE PCB M404-CNA1

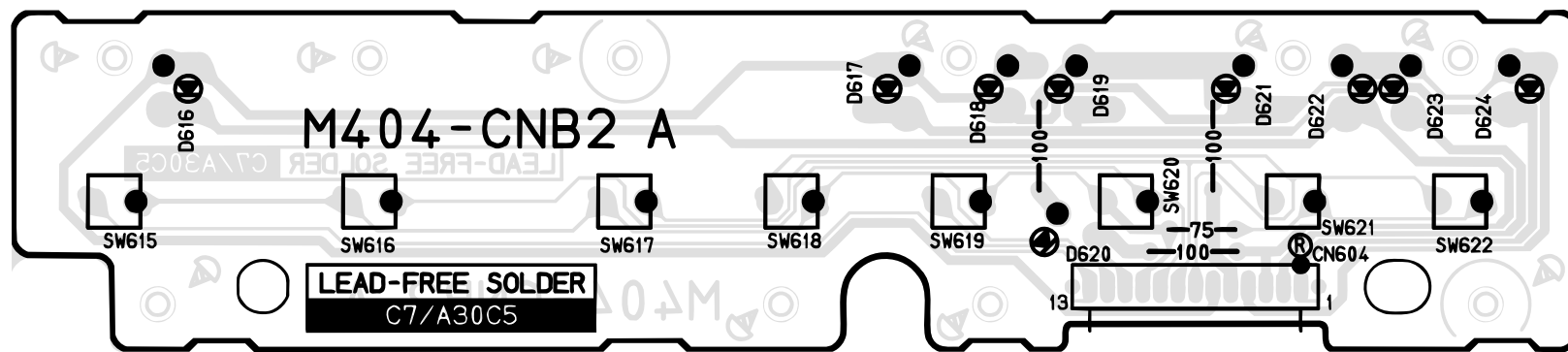


Top view

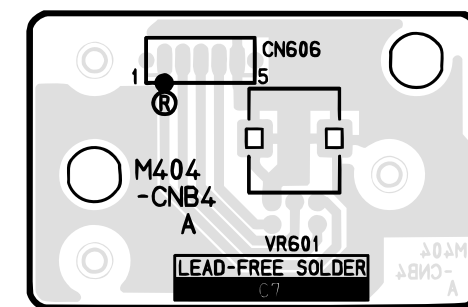


Bottom view

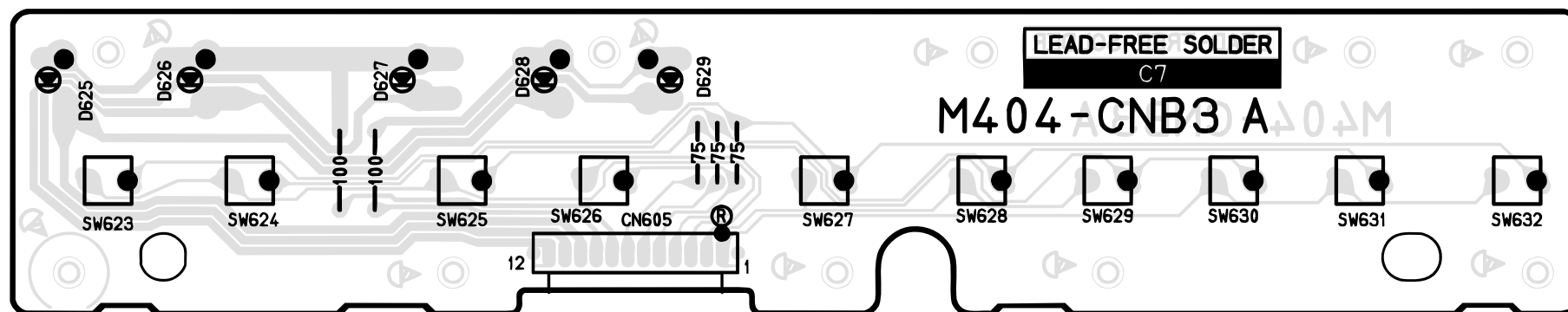
CONSOLE PCB M404-CNB2



CONSOLE PCB M404-CNB4

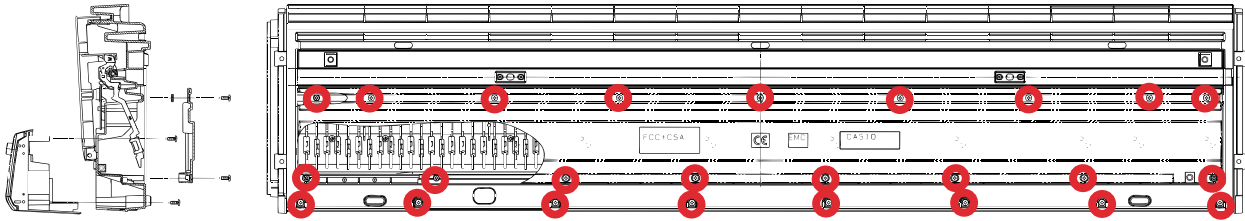


CONSOLE PCB M404-CNB3

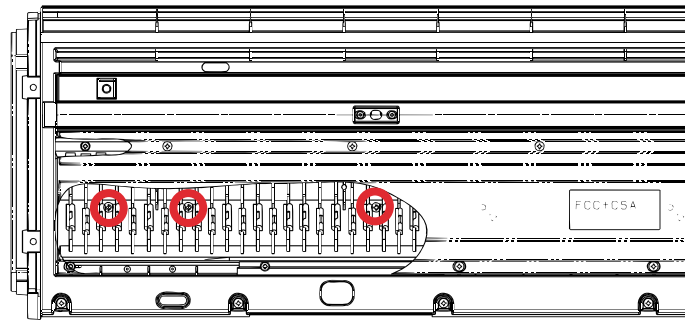


DISASSEMBLY

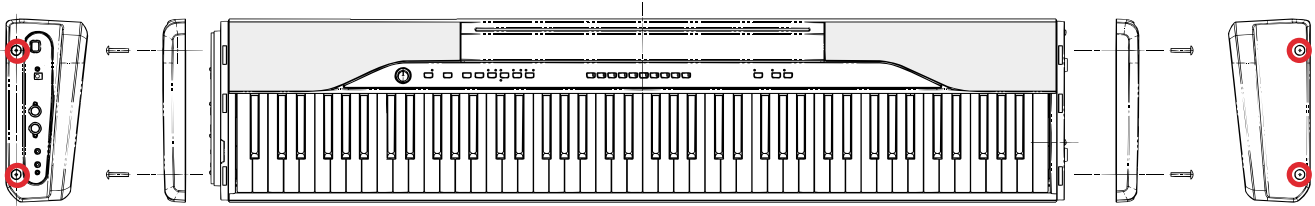
1. Remove 25 screws on the bottom.



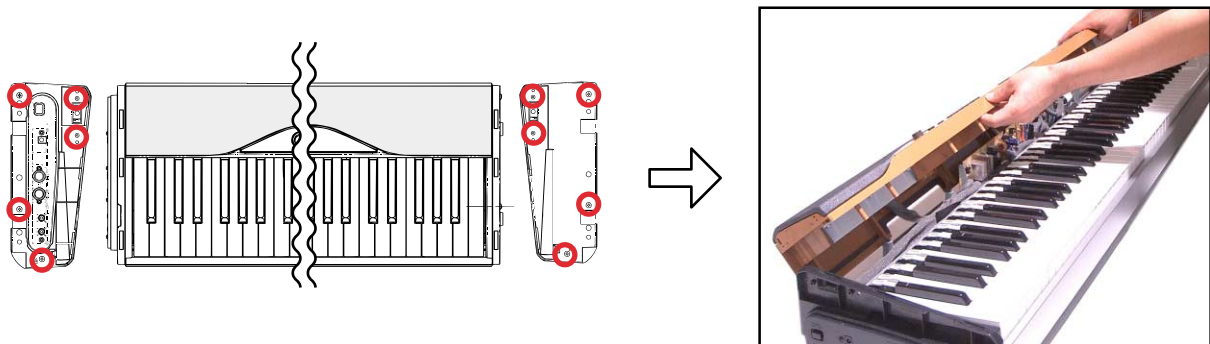
2. Remove the lower panel and then 10 screws.



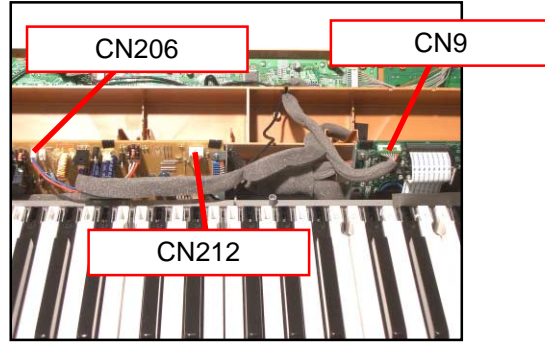
3. Position the main unit, so the main unit faces upward.
4. Remove 2 screws on the right side and 2 screws on the left side of the unit, and then remove side covers on both sides.



5. Remove 10 screws on both sides, and then lift the front panel up.

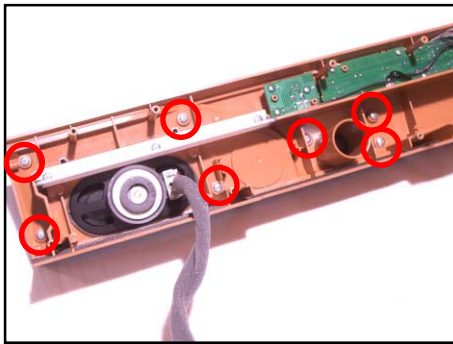


6. Remove 4 connectors then the front panel.



■ Removing the speaker

- 7. Remove 7 screws then the speaker cover.
* Take the same procedure for the speaker on the right side.
- 8. Remove 4 screws then the speaker.
* Take the same procedure for the speaker on the right side.

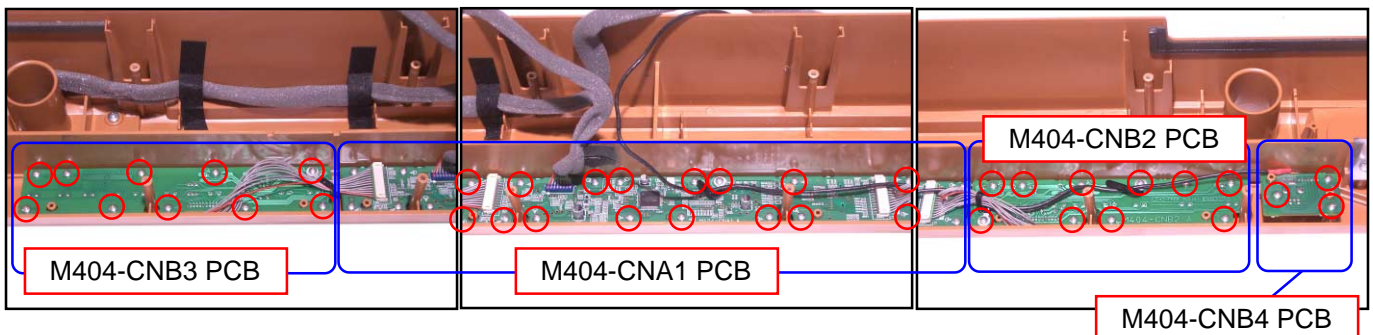


■ Removing the PCBs (M404-CNA1, M404-CNB2, M404-CNB3, and M404-CNB4).

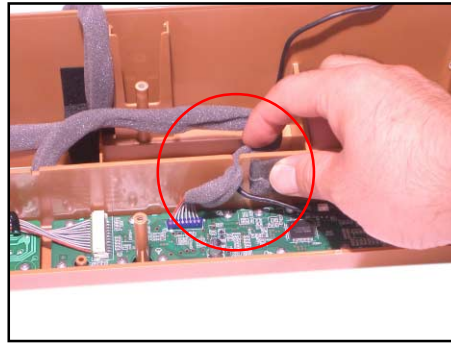
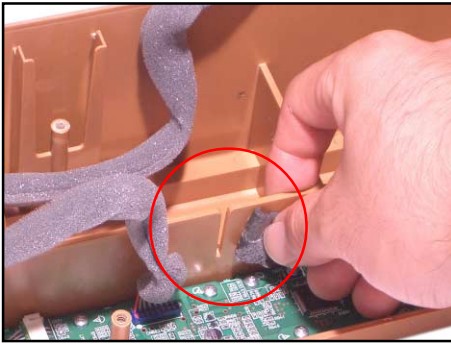
9. Remove the volume knob.



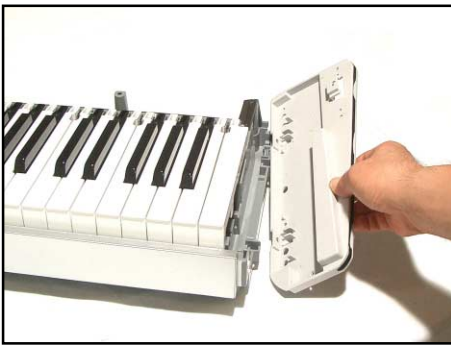
- 10. Remove 10 screws and then the PCB (M404-CNB3).
- 11. Remove 16 screws and then the PCB (M404-CNA1).
- 12. Remove 10 screws and then the PCB (M404-CNB2).
- 13. Remove 3 screws and then the PCB (M404-CNB4).



* Caution while assembling
Place the cable in the groove.



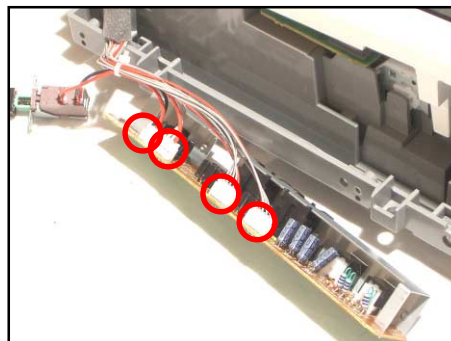
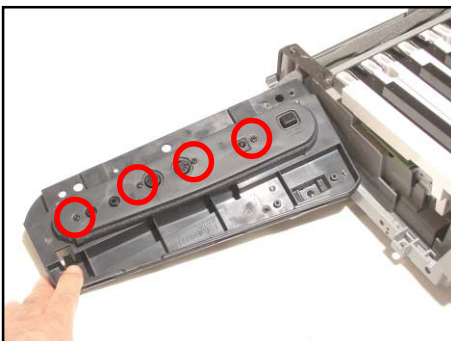
- Removing the side case on the right.
14. Remove the side case on the right.



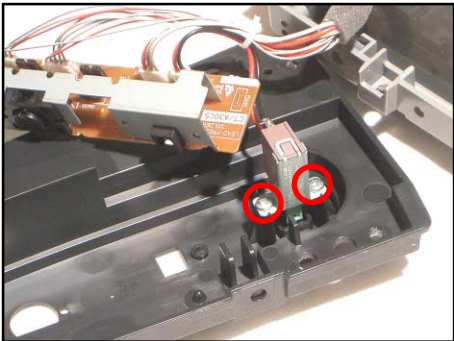
- Removing the side case on the left, the PCB (M403-JKA1) and the power switch.
15. Remove the side case on the left.



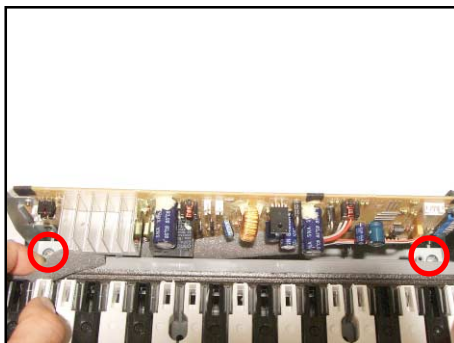
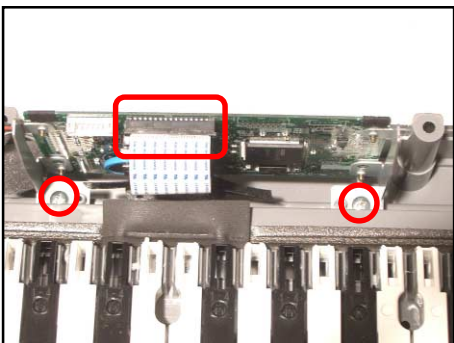
16. Remove 4 screws.
17. Remove 4 connectors and then the PCB (M403-JKA1).



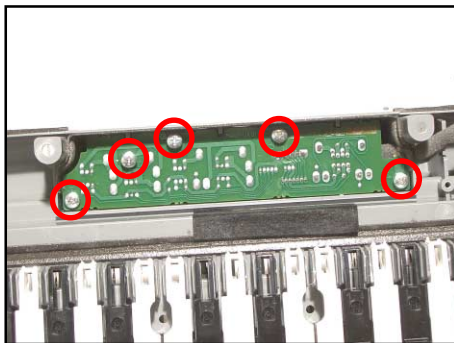
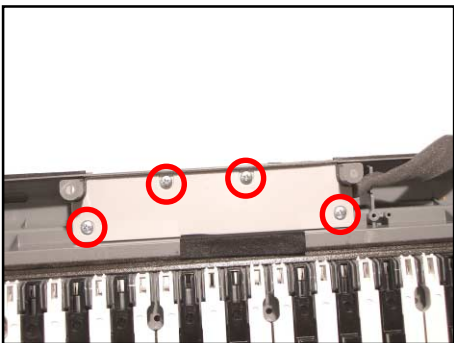
18. Remove 2 screws and then the power switch.



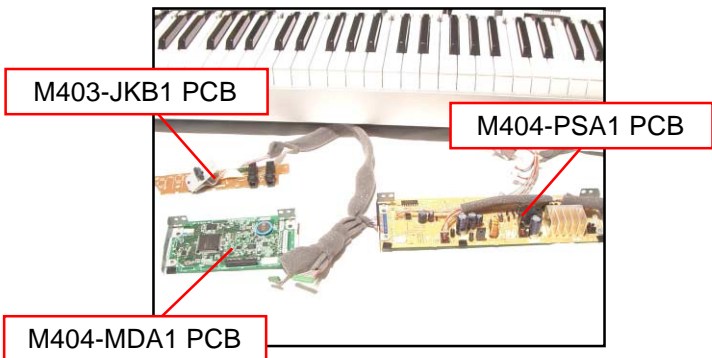
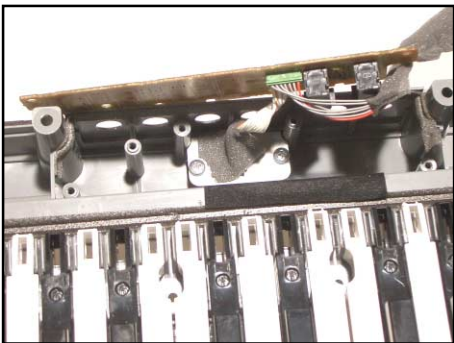
- Removing the PCBs (M404-MDA1, M404-PSA1 and M403-JKB1).
19. Remove the connector and 2 screws then the PCB (M404-MDA1).
20. Remove 2 screws then the PCB (M404-PSA1).



21. Remove 4 screws and then the cover.
22. Remove 5 screws and then the PCB (M403-JKB1).

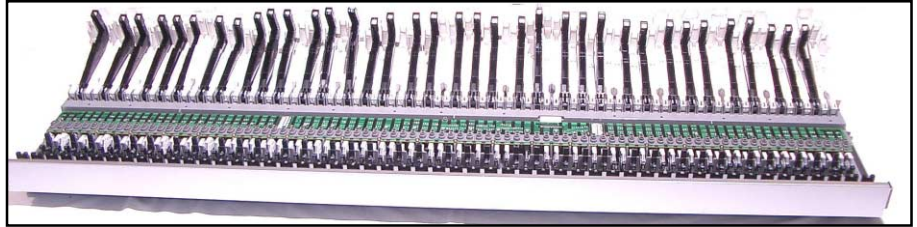


23. Remove 2 screws.



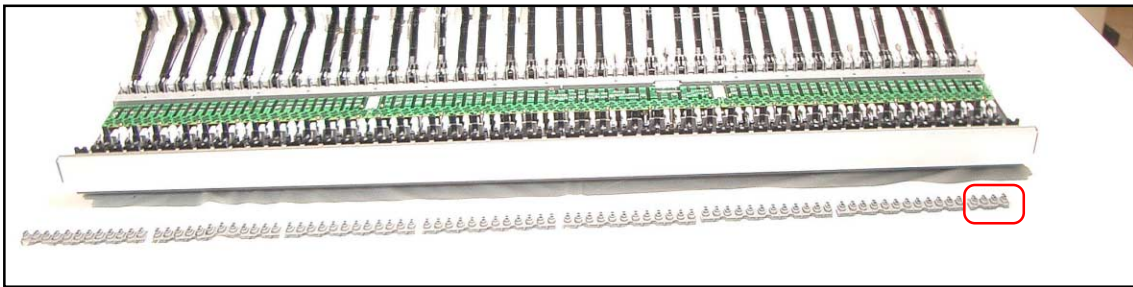
■ Removing the key board.

24. Remove the keys from the hammers.

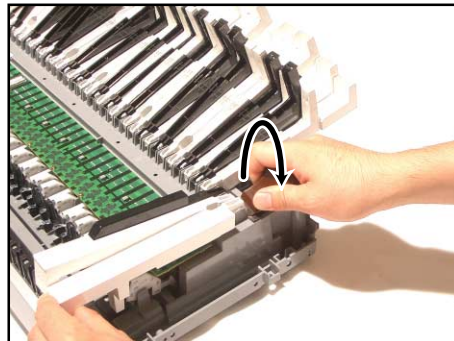
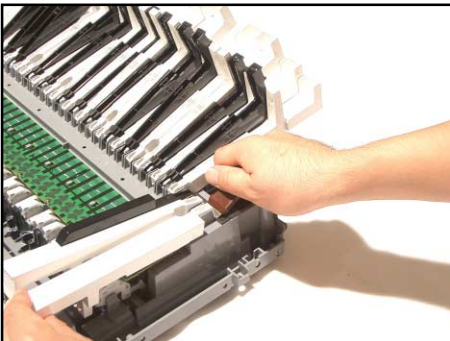


25. Remove the rubber keys.

* One of the keys has the different length from others. Be careful while reassembling.



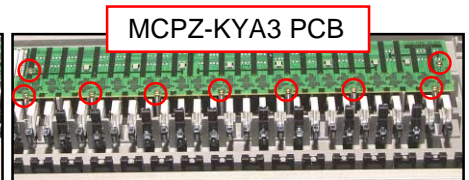
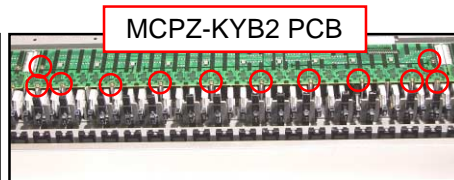
26. Remove the keys.



27. Remove 9 screws then the PCB (MCPZ-KYA1).

28. Remove 12 screws then the PCB (MCPZ-KYB2).

29. Remove 9 screws then the PCB (MCPZ-KYA3).



DIAGNOSTIC PROGRAM

■ Initial Setup

1. Connect an AC adaptor.
2. Connect a pedal cord.
3. "Main" volume: MAX.

NOTE: If there is no pedal or MIDI cable, pedal or MIDI check can be skipped.

■ How to start diagnostic program

1. Turn on the "POWER" button while the "SPLIT" and the "CHRUS" buttons are depressed.
2. Release the "SPLIT" and the "CHRUS" buttons.

~~ALL the LEDs flash and the test mode boots.~~

■ Diagnostic program

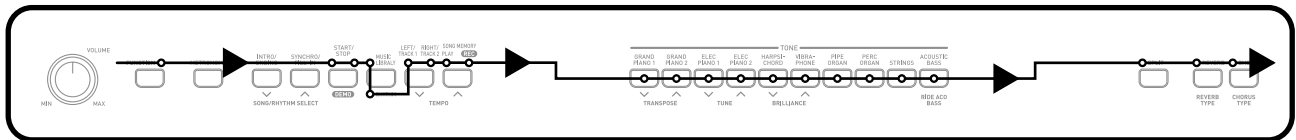
1. Automatic Test

- ① CPU RAM check
- ② DSP RAM check
- ③ ROM check

While performing ① ~ ③, TONE1, TONE2, TONE3, or START/STOP lights when an error is found in ROM. If no error is found, the confirmation chord C6 sounds.

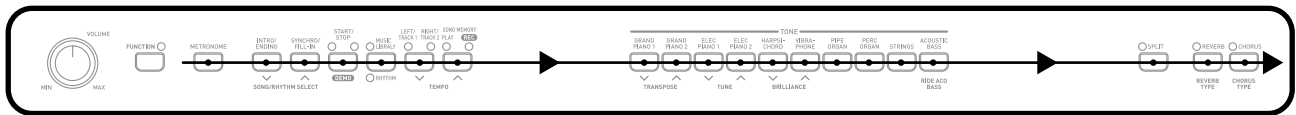
2. LED check

- ① The LEDs light in the sequence shown below when the "FUNCTION" button is pressed. LED check repeats if the "PLAY/RED" is pressed.



3. BUTTON check

- ① Press the "FUNCTION" button to perform "BUTTON check." The confirmation chord C6 sounds.
- ② Press buttons in the order following. NG tone sounds when an error is found in the buttons or when the buttons are pressed in a wrong order. This test cannot be aborted.



4. Pedal check (If there is no Pedal, this check can be skipped.)

- ① Press the "FUNCTION" button to perform the "Pedal check."
- ② Press the "SOFT" pedal. The confirmation chord C4 sounds and "LEFT/TRACK1" LED lights.
- ③ Press the "DAMPER" pedal. The confirmation chord G4 sounds and "RIGHT/TRACK2" LED lights.

5. Headphone check

- ① Press "FUNCTION" button to perform the "Headphone check."
The confirmation chord C6 sounds and "PLAY" LED lights.
- ② Connect the headphone to the LEFT jack.
"REC" LED lights.
- ③ Remove the headphone from the jack.
"PLAY" LED lights.
- ④ Connect the tuning meter to the RIGHT jack.
"REC" LED lights.
- ⑤ Press the "A4" key.
Make sure that the tuning meter is set at 440 ± 2 cents.
- ⑥ Remove the tuning meter from the jack.
"PLAY" LED lights.
- ⑦ Press "FUNCTION" button to finish the "headphone check."
The confirmation chord C6 sounds.

6. MIDI check (If there is no MIDI cable, this check can be skipped.)

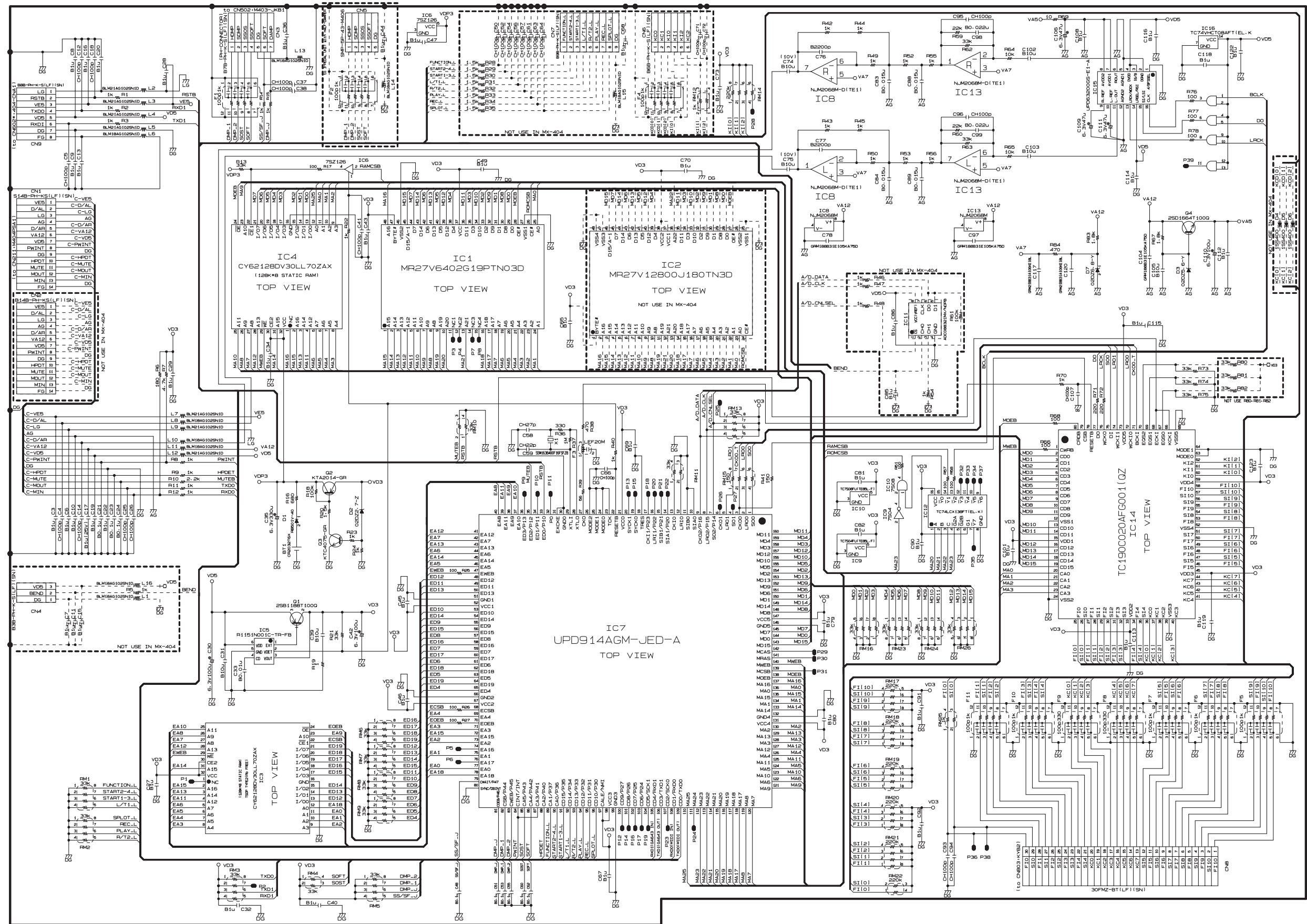
- ① Press "TONE1" button to perform the "MIDI check."
NG tone sounds.
- ② Connect a MIDI cable.
- ③ Press the "TONE1" button and make sure confirmation chord C7 sounds.
- ④ Press the "FUNCTION" button.
The confirmation chord C6 sounds twice.
- ⑤ Turn off the "POWER" button.
- ⑥ Turn on the "POWER" button.

The diagnostic program ends.

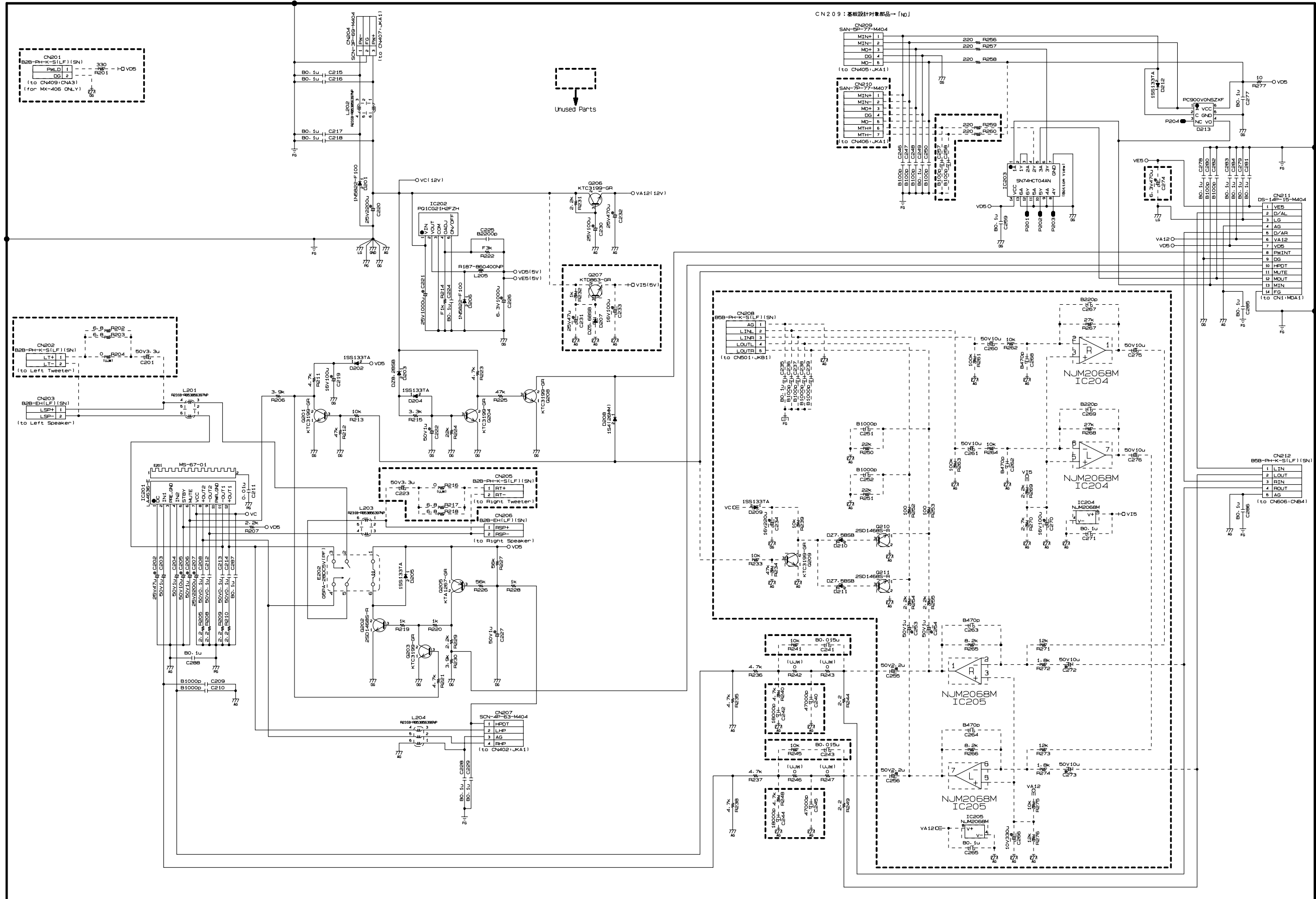
- ① Remove the "DABPER" pedal.
- ② Remove the "SOFT" pedal.
- ③ Remove the MIDI cable.

SCHEMATIC DIAGRAMS

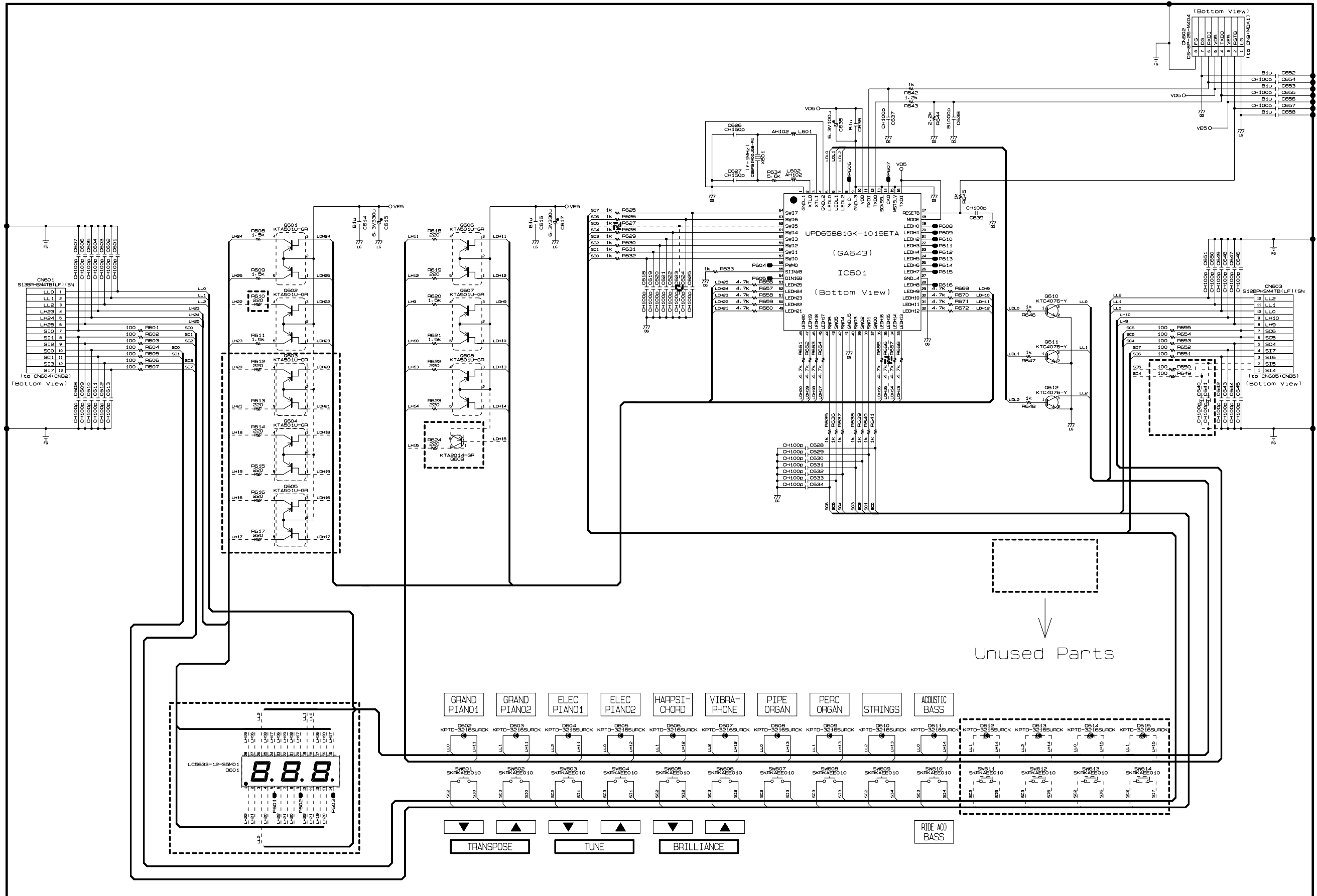
MAIN PCB M404-MDA1



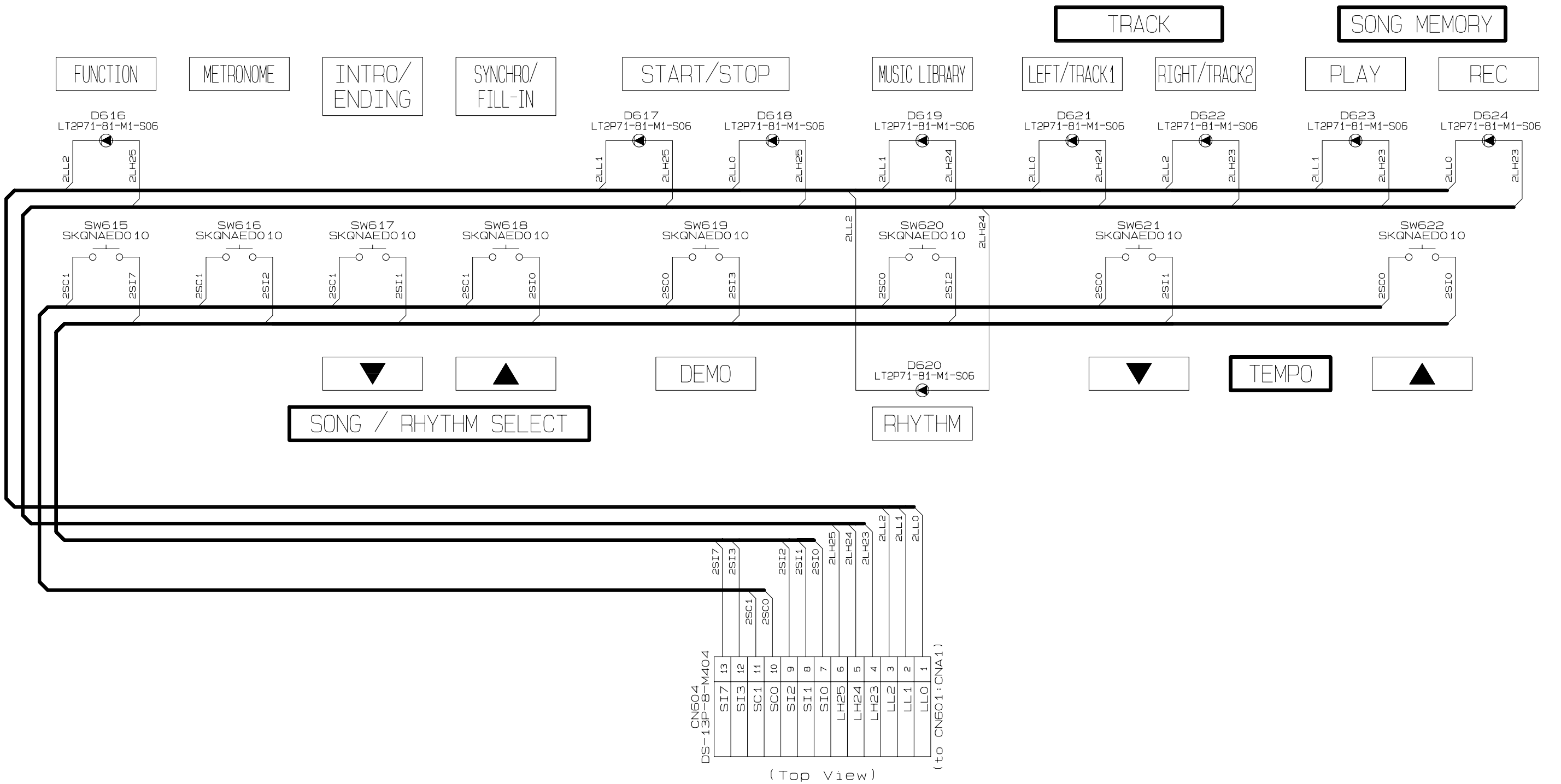
SUB PCB M404-PSA1



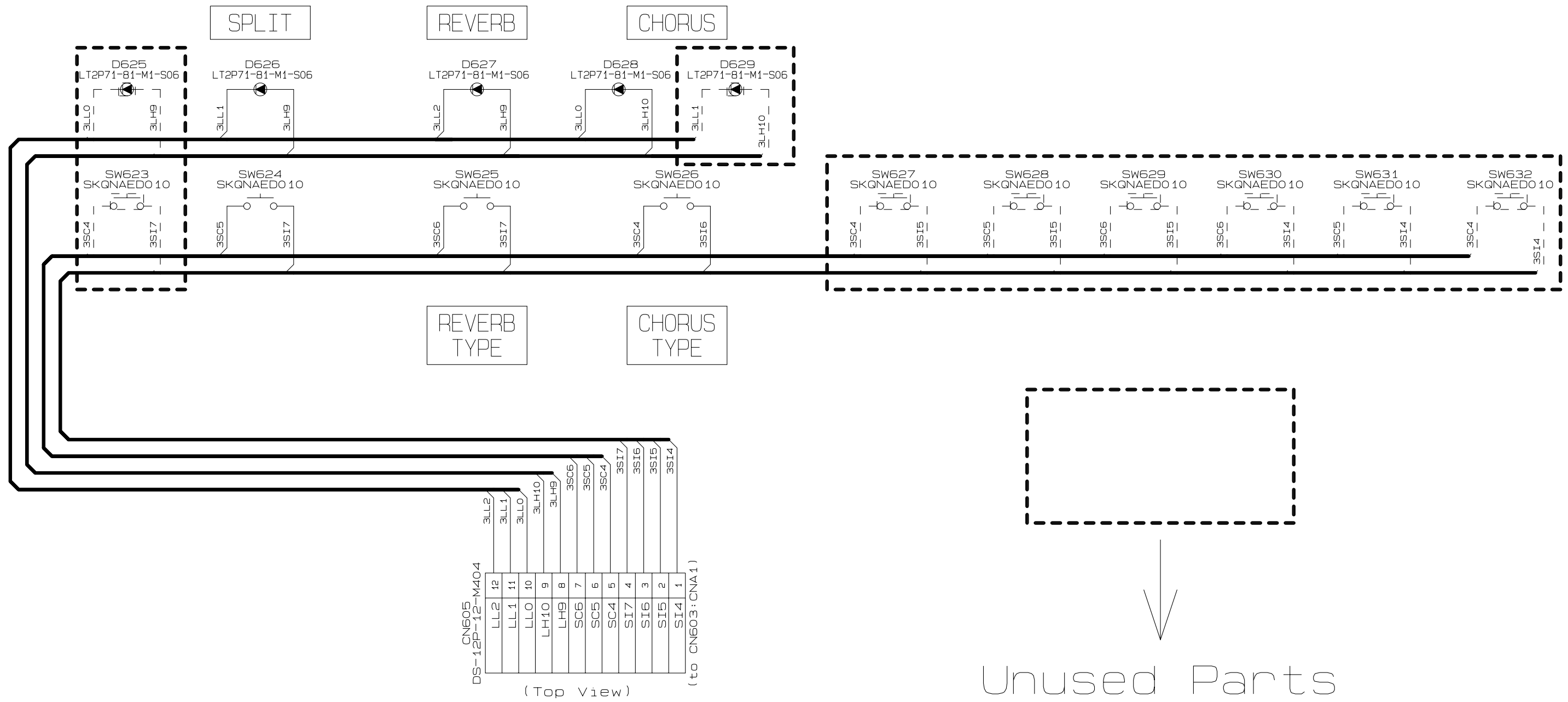
CONSOLE PCB M404-CNA1



CONSOLE PCB M404-CNB2

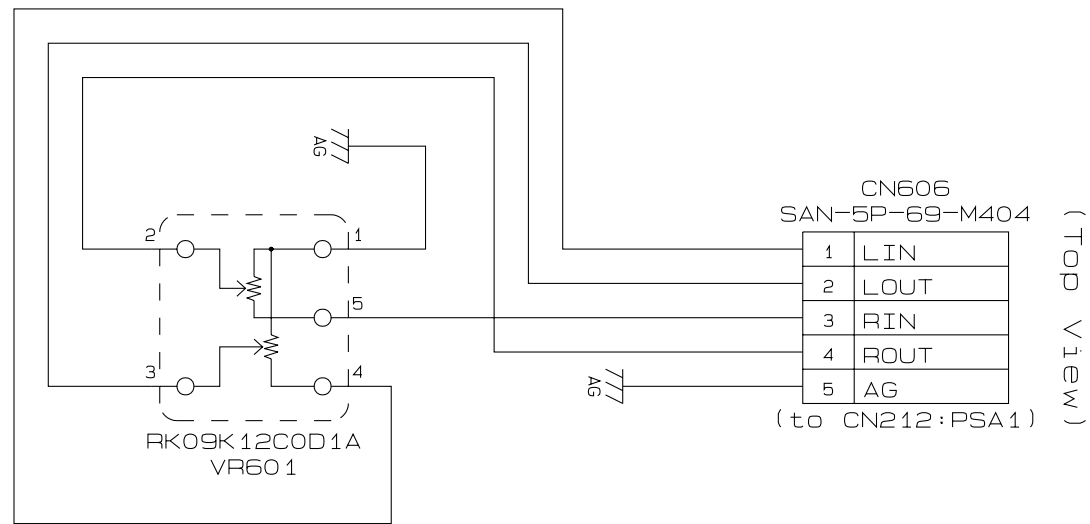


CONSOLE PCB M404-CNB3



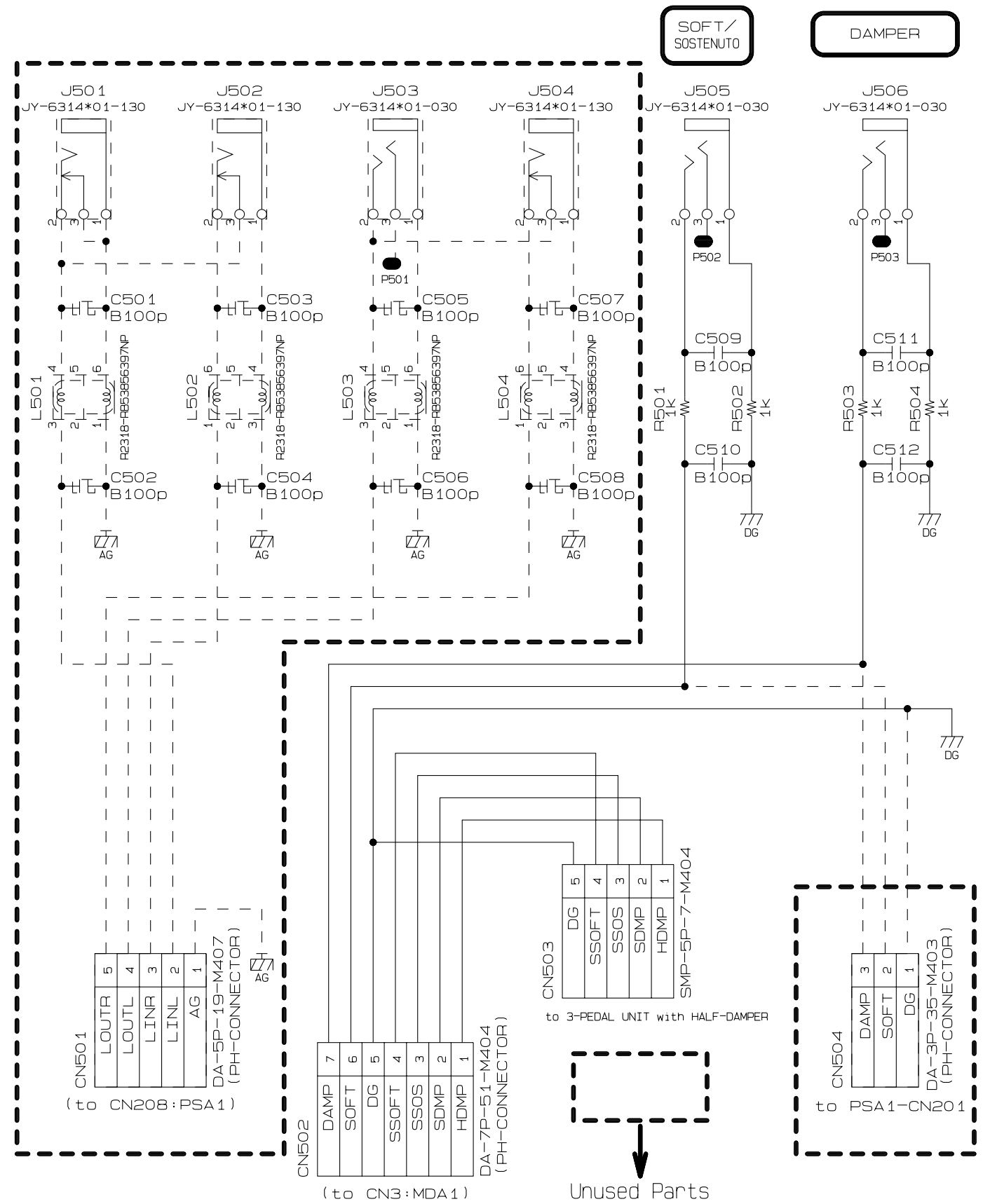
CONSOLE PCB M404-CNB4

MAIN VOLUME

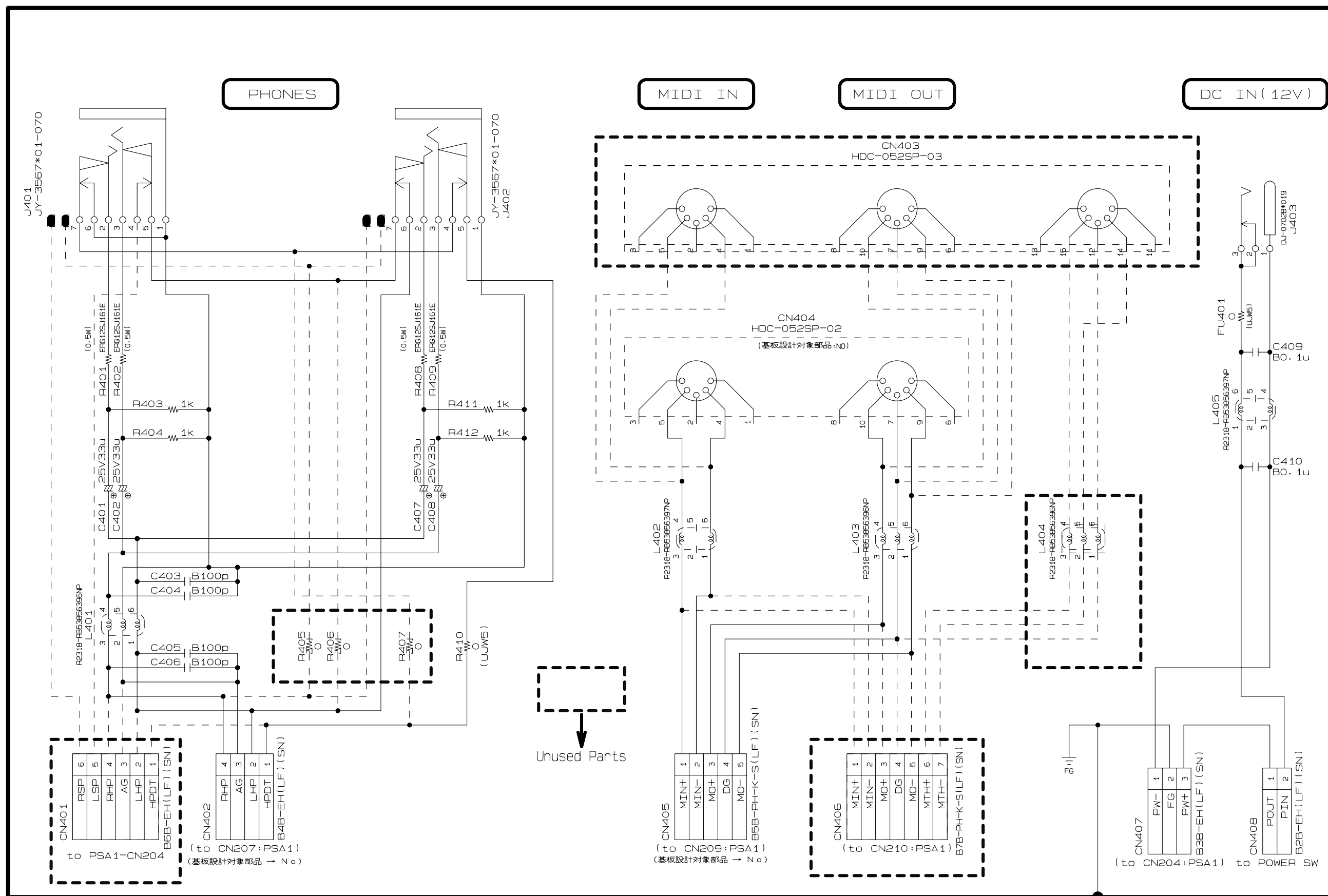


(MAIN TOP VIEW)

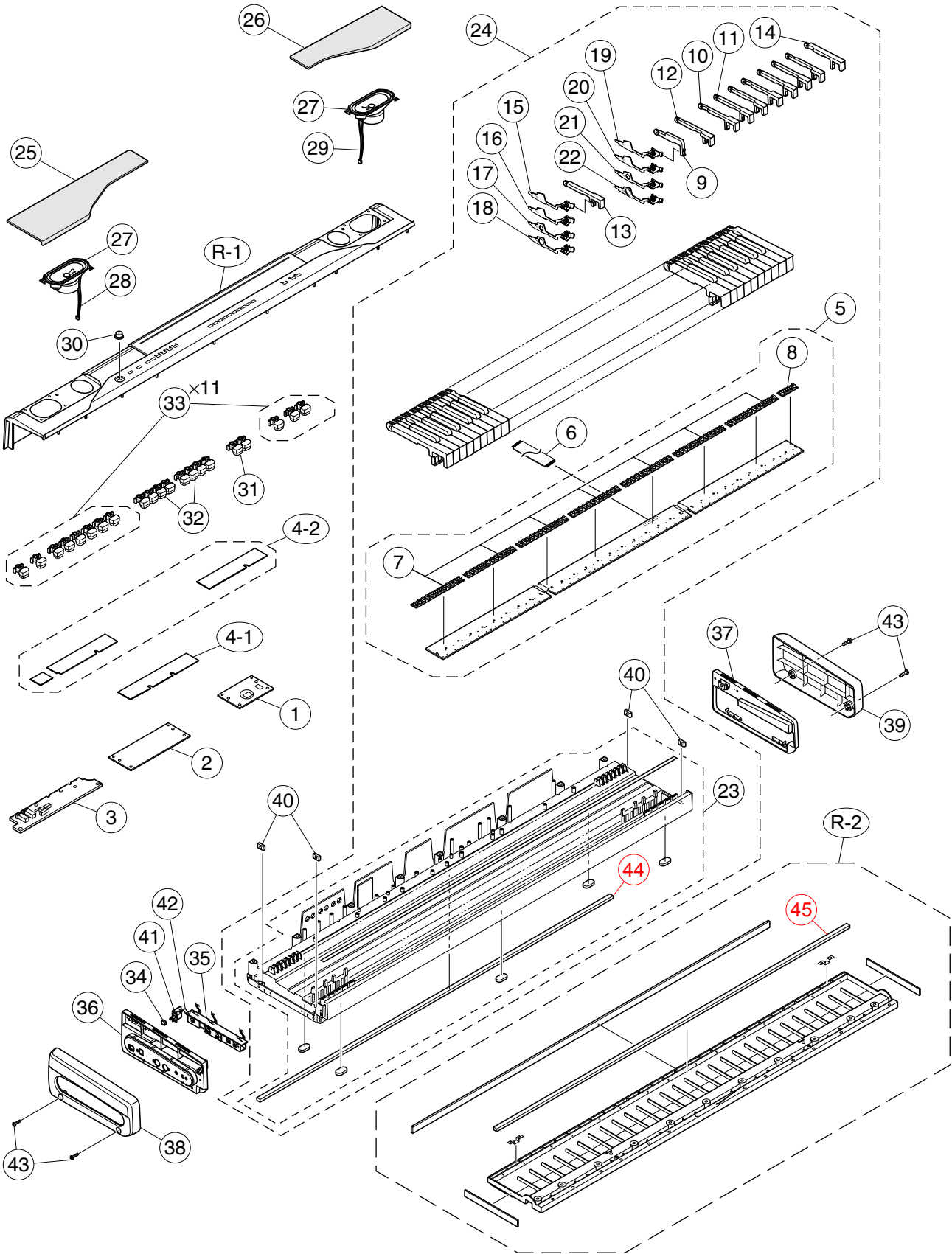
JACK PCB M403-JKB1



JACK PCB M403-JKA1



EXPLODED VIEW



PARTS LIST

PX-110

Notes: This parts list does not include the cosmetic parts, which parts are marked with item No. "R-X" in the exploded view.

Contact our spare parts department if you need these parts for refurbish.

1. Prices and specifications are subject to change without prior notice.
2. As for spare parts order and supply, refer to the "GUIDEBOOK for Spare parts Supply", published seperately.
3. The numbers in item column correspond to the same numbers in drawing.

N	Item	Parts Code	Parts Name	Specification	Q	Price Code	R	Remarks
Main PCB								
N	1	10208341	PCB ASSY-MAIN	TK-RJM506205*001	1	DK	A	
N	BT1	10209154	BATTERY	CR2032T6X	1	AF	C	
	D2	10133383	DIODE	02DZ2.7-Z(TPH3)	1	AA	X	
N	D3	10098748	DIODE	02DZ5.6-Y(TPH3)	1	AA	X	
	D1	23902576	DIODE	RB501V-40TE-17	1	AB	X	
	F8,F9	10122975	FILTER	EZASSB516BJ	2	AA	C	
	F1,F5,F6,F7,F10,F11	10122976	FILTER	EZASTB63ABJ	6	AA	C	
	F3	30251862	FILTER	NFM51R00P206	1	AC	C	
N	IC8,IC13	10211950	IC	NJM2068M-D(Te1)	2	AC	X	
	IC5	10175415	IC	R1151N001C-TR-FB	1	AE	X	
	IC12	10197798	IC	TC74LCX138FT(EL.K)	1	AI	X	
	IC16	10197802	IC	TC74VHCT08AFT(EL.K)	1	AE	X	
	IC9	10197553	IC	TC7S04FU(Te85L.F)	1	AA	X	
	IC10	10137770	IC	TC7S08FU(Te85L.F)	1	AA	X	
	IC6	10197554	IC	TC7SZ126FU(Te85L.F)	1	AE	X	
	IC15	10195928	IC	UPD63200GS-E1-A	1	AX	X	
N	IC3,IC4	10198126	MEMORY	CY62128DV30LL70ZAX	2	AU	X	
N	IC1	10209466	MEMORY	MR27V6402G19PTN03D	1	BH	X	
	Q1	22592764	TRANSISTOR	2SB1188T100Q	1	AB	C	
	Q4	22530715	TRANSISTOR	2SD1664T100Q	1	AA	C	
N	Q2	10202670	TRANSISTOR	KTA2014-GR-RTK/P	1	AA	C	
N	Q3	10207675	TRANSISTOR	KTC4075-GR-RTK/P	1	AA	C	
	D7	23903101	DIODE	02DZ6.8-Y(TPH3.F)	1	AA	X	
Sub PCB PS1								
N	2	10208342	PCB ASSY/PSA1	TK-RJM506208*001	1	CL	C	
N	D201,206	10209003	DIODE	1N5822-F100	2	AB	X	
N	D213	10201501	PHOTO COUPLER	PC900V0NSZXF	1	AG	X	
N	E202	10211947	RELAY	G5PA-28DC5V(PF)	1	AN	X	
N	IC201	10203081	IC	LA4636-E	1	AV	X	
N	IC202	10201503	IC	PQ1CG21H2FZH	1	AO	X	
N	IC203	10209159	IC	SN74HCT04AN	1	AC	X	
N	CN211	10212700	HARNESS	DS-14P-15-M404	1	AH	X	
N	CN209	10212718	HARNESS	SAN-5P-77-M404	1	AE	X	
N	CN204	10212702	HARNESS	SCN-3P-69-M404	1	AC	X	
N	CN207	10212701	HARNESS	SCN-4P-63-M404	1	AD	X	
	D208	10079929	DIODE	SRT14TA	1	AA	X	
	D202,204,205,212	10079928	DIODE	1SS133TA	4	AA	X	
	D203	10132124	DIODE	DZ8.2BSBTA	1	AA	X	
	Q202	10025042	TRANSISTOR	2SD1468STPR	1	AA	X	
N	Q205	10209017	TRANSISTOR	KTA1267-GR-AT/P	1	AA	X	
N	Q201,203,204,206,208	10206673	TRANSISTOR	KTC3199-GR-AT/P	5	AA	X	
Jack PCB								
N	3	10208343	PCB ASSY/JKB1	TK-RJM506210*001	1	AU	C	
N	J505,506	10206815	JACK	JY-6314*01-030	2	AA	X	

Notes: N- New parts
Q-Quantity used per unit

N	Item	Parts Code	Parts Name	Specification	Q	Price Code	R	Remarks
Console PCB								
N	4-1	10208337	PCB ASSY/CNA1	TK-RJM506203*001	1	CC	C	
	IC601	10159709	LSI	UPD65881GK-1019ETA	1	AS	X	
	X601	10096483	RESONATOR	CSBFB1M00J58-R1	1	AG	X	
N	D602-611	10209564	LED	KPTD-3216SURCK	10	AA	X	
N	Q601,602,607-608	10209018	TRANSISTOR	KTA501U-GR-RTK/P	5	AA	X	
N	Q610-612	10209027	TRANSISTOR	KTC4076-Y-RTK/P	3	AA	X	
N	SW601-610	10174669	SWITCH	SKRKAEE010	10	AA	X	
N	CN602	10212709	HARNESS	DS-8P-25-M404	1	AF	X	
N	4-2	10208338	PCB ASSY/CNB	TK-RJM506222*001	1	BP	C	
Key board assy								
N	5	10208264	PCB ASSY/KEY	TK-RJM506061*001	1	CF	C	
	D801-854,855-922,923-976	10079928	DIODE	1SS133TA	176	AA	X	
N	6	10135958	CABLE	N30195B1B05-UL2896	1	AG	C	
	7	10133656	RUBBER/CONTACT/AG	RJM502920-001V01	7	AK	B	
	8	10133635	RUBBER/CONTACT/GC	RJM502921-001V01	1	AG	B	
	9	10135317	BLACK KEY	RJM502797-001V01	36	AC	C	
	10	10135426	WHITE KEY/CEGB	RJM502862-001V01	7	AT	C	
	11	10135427	WHITE KEY/DFA	RJM502863-001V01	7	AQ	C	
	12	10135428	WHITE KEY/B	RJM502794-001V01	1	AG	C	
	13	10135429	WHITE KEY/SA	RJM502795-001V01	1	AJ	C	
	14	10135430	WHITE KEY/SC	RJM502796-001V01	1	AJ	C	
N	15	10208265	HAMMER ASSY/W1	TK-RJM506035*001	13	AF	C	
N	16	10208266	HAMMER ASSY/W2	TK-RJM506036*001	13	AF	C	
N	17	10208267	HAMMER ASSY/W3	TK-RJM506037*001	13	AF	C	
N	18	10208269	HAMMER ASSY/W4	TK-RJM506038*001	13	AF	C	
N	19	10208275	HAMMER ASSY/B1	TK-RJM506039*001	9	AE	C	
N	20	10208281	HAMMER ASSY/B2	TK-RJM506040*001	9	AE	C	
N	21	10208286	HAMMER ASSY/B3	TK-RJM506041*001	9	AE	C	
N	22	10208290	HAMMER ASSY/B4	TK-RJM506042*001	9	AE	C	
N	23	10208345	CASE ASSY/MIDDLE	TK-RJM506053*001	1	CY	C	
N	24	10208344	KEY ASSY	TK-RJM506029*001	1	EB	B	

Notes: N- New parts
Q-Quantity used per unit

N	Item	Parts Code	Parts Name	Specification	Q	Price Code	R	Remarks
Case unit								
N	25	10208334	COVER/SPEAKER L	TK-RJM506070*001	1	AW	C	
N	26	10208329	COVER/SPEAKER R	TK-RJM506069*001	1	AW	C	
N	27	10214565	SPEAKER	C0612J52	2	AU	B	
N	28	10212713	HARNESS	EH-2P-46-M404	1	AA	C	
N	29	10212715	HARNESS	EH-2P-78-M404	1	AB	C	
N	30	10211772	KNOB/ROTARY	RJM502503-011V01	1	AA	C	
N	30	10211866	KNOB/ROTARY	RJM502503-013V02	1	AA	C	PX-110DK
N	31	10203519	BUTTON/TACT/A	RJM505580-002V01	1	AB	C	
N	31	10203525	BUTTON/TACT/A	RJM505580-008V01	1	AA	C	PX-110DK
N	32	10203520	BUTTON/TACT/A	RJM505580-003V01	2	AC	C	
N	32	10203526	BUTTON/TACT/A	RJM505580-009V01	2	AA	C	PX-110DK
N	33	10203528	BUTTON/TACT/B	RJM505686-001V01	11	AA	C	
N	33	10203534	BUTTON/TACT/B	RJM505686-007V01	11	AA	C	PX-110DK
	34	69245260	BUTTON/PW	M340318-1	1	AA	C	
N	35	10208340	PCB ASSY/JKA1	TK-RJM506218*001	1	BE	X	
	CN409	35016944	CONNECTOR	B5B-PH-K-S	1	AA	X	
	CN410	10081222	DIN JACK	HDC-052S-02	1	AF	X	
N	J401,402	10208979	JACK	JY-3567*01-070	2	AC	X	
N	J403	10208247	DC JACK	DJ-0702B*019	1	AA	X	
	SW401	69324103	SWITCH	SDKLA11000	1	AK	X	
N	36	10203501	CASE/SIDE IL	RJM505581-001V01	1	AO	C	
N	37	10203504	CASE/SIDE IR	RJM505582-001V01	1	AN	C	
N	38	10203507	CASE/SIDE L	RJM505583-001V01	1	AQ	C	
N	39	10203510	CASE/SIDE R	RJM505584-001V01	1	AS	C	
	40	10129909	NUT/SUPPORT	RJM503163-001V01	4	AC	X	
	41	34121827	SWITCH	SDDL1-A2-D	1	AM	C	
	42	10176916	HARNESS	EH-2P-8-M419	1	AA	C	
	43	10203785	SCREW	S-TRMA-6X30B3	4	AA	C	
	44	10311215	FELT/HAM U	RJM509043-001V01	1	BI	X	
REFURBISH								
N	R-1	10208313	PANEL ASSY	TK-RJM505972*001	1	CF	C	
N	R-1	10208319	PANEL ASSY	TK-RJM505972*002	1	CF	C	PX-110DK
N	R-2	10208339	CASE ASSY/LOWER	TK-RJM505967*001	1	BX	C	
	45	10258844	FELT/HAM L	RJM507395-001V02	1	BB	X	
ACCESSORY								
	-	10133504	PEDAL ASSY	TK-RJM503195*001	1	BN	C	
	-	10128659	AC ADAPTOR	AD-12UL-TC2(D)	1	CE	C	120V
	-	10168517	AC ADAPTOR	AD-12FL-TC3(D)	1	CC	C	230V
N	-	10203517	STAND/MUSIC	RJM503703-002V01	1	AY	C	
	-	10100792	CORD SET	INQ.1258(1)	1	AP	C	Korea
	-	10045706	CORD SET	EC2NC-M001A	1	AM	C	Euro type
	-	10045707	CORD SET	BC2NC-M001A	1	BD	C	UK type
N	-	10209207	COVER/DUST	RJM506261-001V01	1	BD	X	
OPTIONAL STAND(CS-65P)								
N	-	1022 7905	SCREW SET	TK-RJM506109*001	1	BH	C	
		1022 7906	SCREW SET	TK-RJM506109*002	1	BI	C	PX-110DK

Notes: N- New parts
Q-Quantity used per unit

- Ver.1: Nov. 2005
- Replacement of the PARTS LIST
- Ver.2: Jan. 2007
- Correction of page 25
- Ver.3: Dec. 2007
- Correction of the DIAGNOSTIC PROGRAM (P12)
- Ver.4: Feb. 2009
- Correction of the EXPLODED VIEW (P21)
 - Correction of the PARTS LIST (P25)

CASIO COMPUTER CO.,LTD.

Overseas Service Division

6-2, Hon-machi 1-Chome
Shibuya-ku, Tokyo 151-8543, Japan