

CASIO®

Service Manual

(without price)

PX-700

SEP. 2005



PX-700

ELECTRONIC KEYBOARD

Ver. 9: Jan. 2010

CONTENTS

| | |
|------------------------------|-----------|
| Specifications | 1 |
| Block Diagram | 2 |
| Circuit Description | 3 |
| Printed Circuit Board | 4 |
| Disassembly | 6 |
| Diagnostic Program | 14 |
| Schematic Diagrams | 16 |
| Exploded View | 20 |
| Parts List | 22 |

SPECIFICATIONS

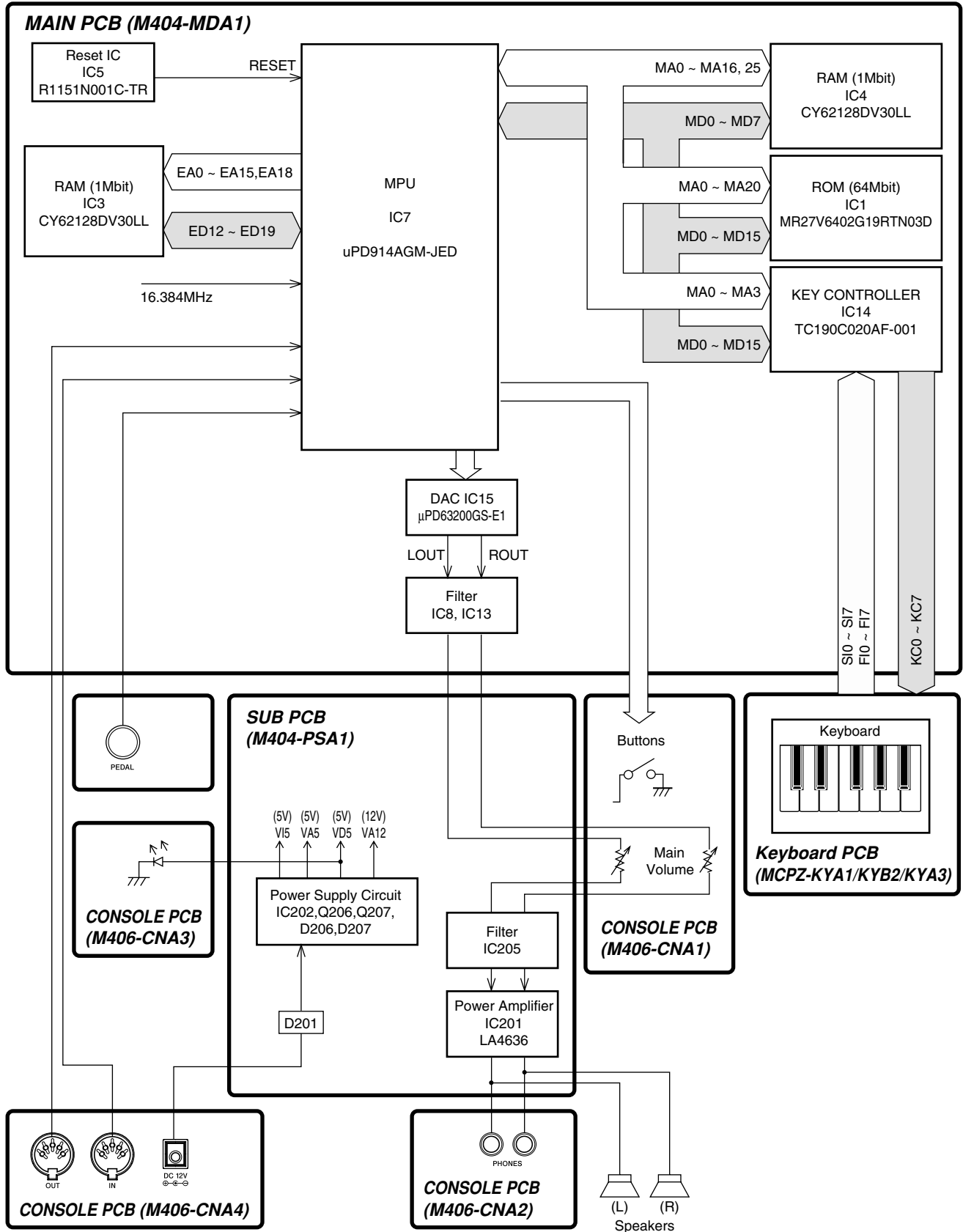
GENERAL

| | |
|--------------------|---|
| Keyboard: | 88 piano keys (with touch response) |
| Polyphony: | 32 notes, maximum |
| Tones: | 11; with layer, split |
| Digital Effects: | Reverb (4 types), Chorus (4 types), DSP, Brilliance |
| Metronome: | <ul style="list-style-type: none">• Time Signatures: 0, 2, 3, 4, 5, 6• Tempo Range: 30 to 255 |
| Music Library: | <ul style="list-style-type: none">• Number of Tunes: 60• Tune Volume: Adjustable• Demo: Sequential looping of all 60 preset tunes• Part On/Off: Left hand, right hand |
| Song Memory: | <ul style="list-style-type: none">• Operations: Real-time recording, playback• Capacity: Approximately 10,000 notes (2 tracks total)• Memory Backup: Built-in lithium battery (Battery Life: 5 years) |
| Pedals: | Damper, Soft, Sostenuto |
| Other Functions: | <ul style="list-style-type: none">• Touch: 3 types, off• Transpose: 1 octave (F# to C to F)• Tuning: A4 = 440.0Hz ±50 cents (adjustable) |
| MIDI: | 16 multi-timbre receive |
| Input/Output: | <ul style="list-style-type: none">• Headphones: Stereo standard jacks ϕ 2 Output Impedance: 170. Output Voltage: 5.5V (RMS) MAX• Power: 12V DC• MIDI (OUT) (IN)• Pedal connector |
| Speakers: | 12cm ϕ 2 (Output: 8.0W + 8.0W) |
| Power Supply: | AC Adaptor: AD-12 |
| Power Consumption: | 12V \equiv 18W |
| Dimensions: | Digital piano + stand: 136.9 ϕ 30.0 ϕ 78.9 cm (53 $\frac{15}{16}$ ϕ 11 $\frac{13}{16}$ ϕ 31 $\frac{1}{16}$ inch) |
| Weight: | Digital piano + stand: Approximately 32.5 kg (71.6 lbs) |

ELECTRICAL

| | |
|---|----------------------|
| Load condition | |
| Current drain with 12 V DC: | |
| Speaker: 6 . Real Load | |
| Volume: maximum | |
| Tone: Strings | |
| Touch: MAX mode | |
| Keys: A0 - D5, 32poly | |
| Consumption Current | 1450 mA ± 20 % |
| Consumption Current at idle | 230 mA ± 20 % |
| Speaker output level (Vrms with 6 . load each channel): | |
| Tone: TEST MODE (Sin wave MAX L and MAX R) | |
| | L ch: 3000 mV ± 20 % |
| | R ch: 3000 mV ± 20 % |
| Phone output level (Vrms with 32 . load each channel): | |
| Tone: TEST MODE (Sin wave MAX) | |
| | L ch: 300 mV ± 20 % |
| | R ch: 300 mV ± 20 % |

BLOCK DIAGRAM

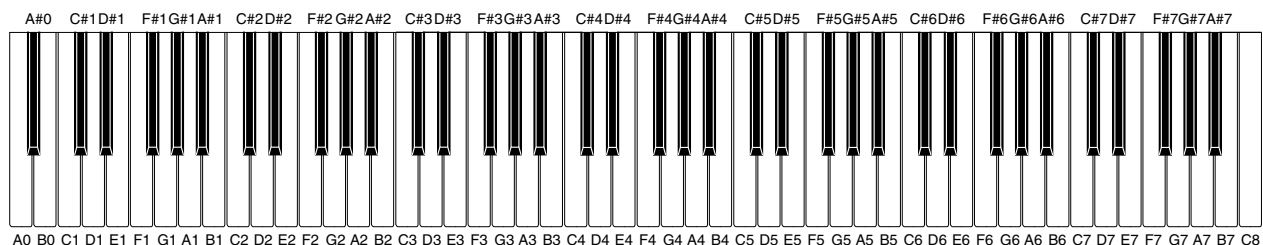


CIRCUIT DESCRIPTION

KEY MATRIX

| | KC0 | KC1 | KC2 | KC3 | KC4 | KC5 | KC6 | KC7 |
|------|------|------|------|------|------|------|------|------|
| FI0 | A0① | A0#① | B0① | C1① | C1#① | D1① | D1#① | E1① |
| SI0 | A0② | A0#② | B0② | C1② | C1#② | D1② | D1#② | E1② |
| FI1 | F1① | F1#① | G1① | G1#① | A1① | A1#① | B1① | C2① |
| SI1 | F1② | F1#② | G1② | G1#② | A1② | A1#② | B1② | C2② |
| FI2 | C2#① | D2① | D2#① | E2① | F2① | F2#① | G2① | G2#① |
| SI2 | C2#② | D2② | D2#② | E2② | F2② | F2#② | G2② | G2#② |
| FI3 | A2① | A2#① | B2① | C3① | C3#① | D3① | D3#① | E3① |
| SI3 | A2② | A2#② | B2② | C3② | C3#② | D3② | D3#② | E3② |
| FI4 | F3① | F3#① | G3① | G3#① | A3① | A3#① | B3① | C4① |
| SI4 | F3② | F3#② | G3② | G3#② | A3② | A3#② | B3② | C4② |
| FI5 | C4#① | D4① | D4#① | E4① | F4① | F4#① | G4① | G4#① |
| SI5 | C4#② | D4② | D4#② | E4② | F4② | F4#② | G4② | G4#② |
| FI6 | A4① | A4#① | B4① | C5① | C5#① | D5① | D5#① | E5① |
| SI6 | A4② | A4#② | B4② | C5② | C5#② | D5② | D5#② | E5② |
| FI7 | F5① | F5#① | G5① | G5#① | A5① | A5#① | B5① | C6① |
| SI7 | F5② | F5#② | G5② | G5#② | A5② | A5#② | B5② | C6② |
| FI8 | C6#① | D6① | D6#① | E6① | F6① | F6#① | G6① | G6#① |
| SI8 | C6#② | D6② | D6#② | E6② | F6② | F6#② | G6② | G6#② |
| FI9 | A6① | A6#① | B6① | C7① | C7#① | D7① | D7#① | E7① |
| SI9 | A6② | A6#② | B6② | C7② | C7#② | D7② | D7#② | E7② |
| FI10 | F7① | F7#① | G7① | G7#① | A7① | A7#① | B7① | C8① |
| SI10 | F7② | F7#② | G7② | G7#② | A7② | A7#② | B7② | C8② |

NOMENCLATURE OF KEYS

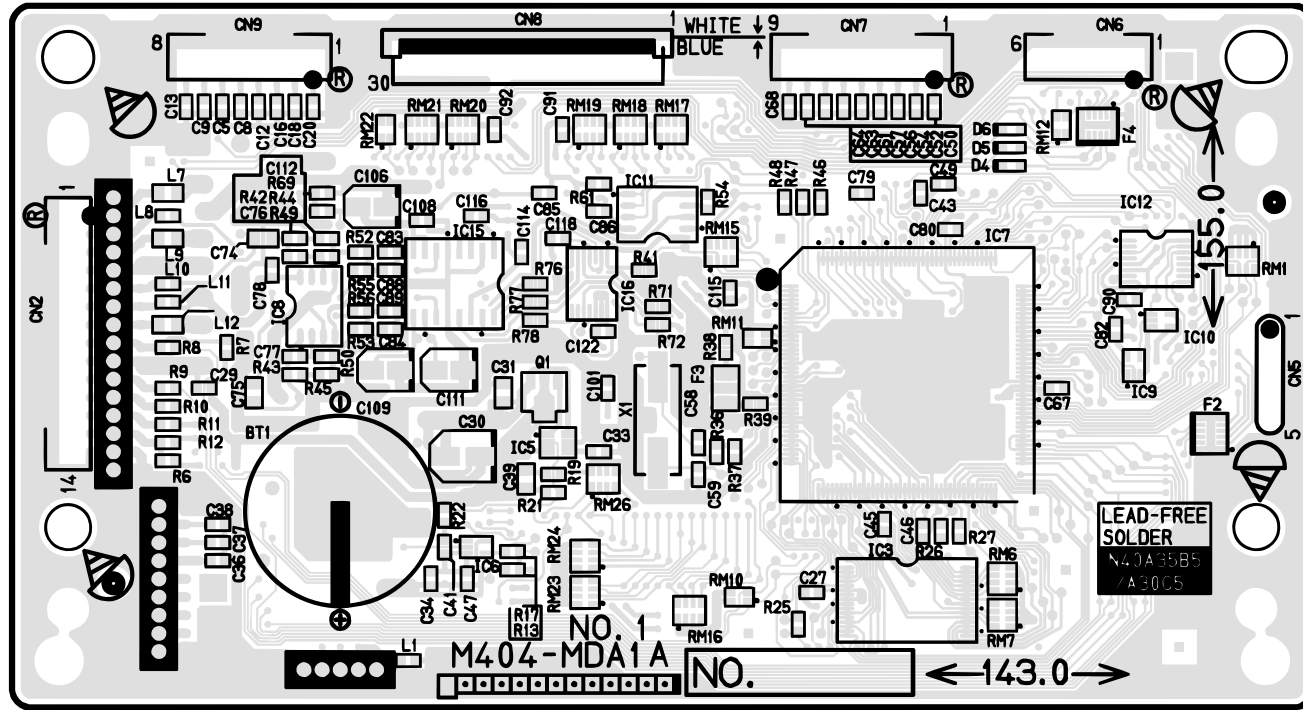


BUTTON MATRIX

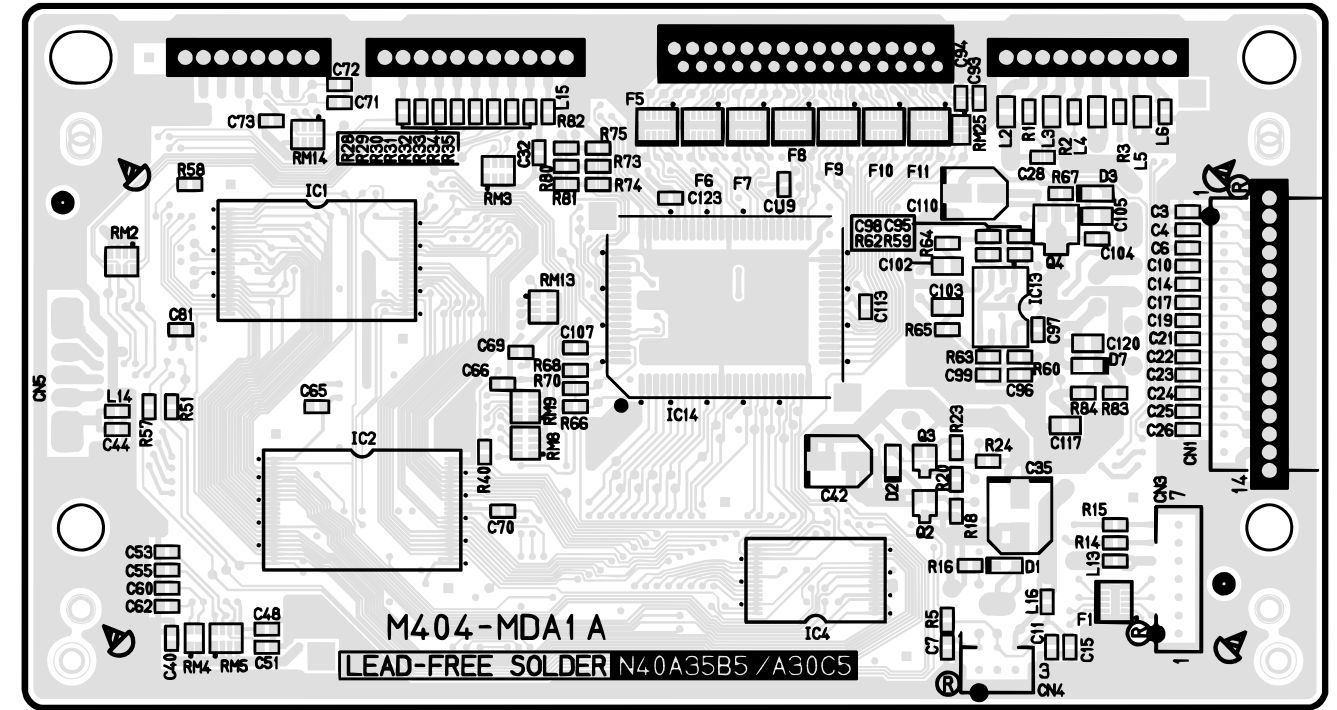
| | KI0 | KI1 | KI2 |
|-----|-------------|-------------|-------------|
| KC0 | FUNCTION | SONG MEMORY | / |
| KC1 | START/ STOP | METRONOME | / |
| KC2 | PART/ TRACK | SPLIT | GRAND PIANO |

PRINTED CIRCUIT BOARDS

MAIN PCB M404-MDA1

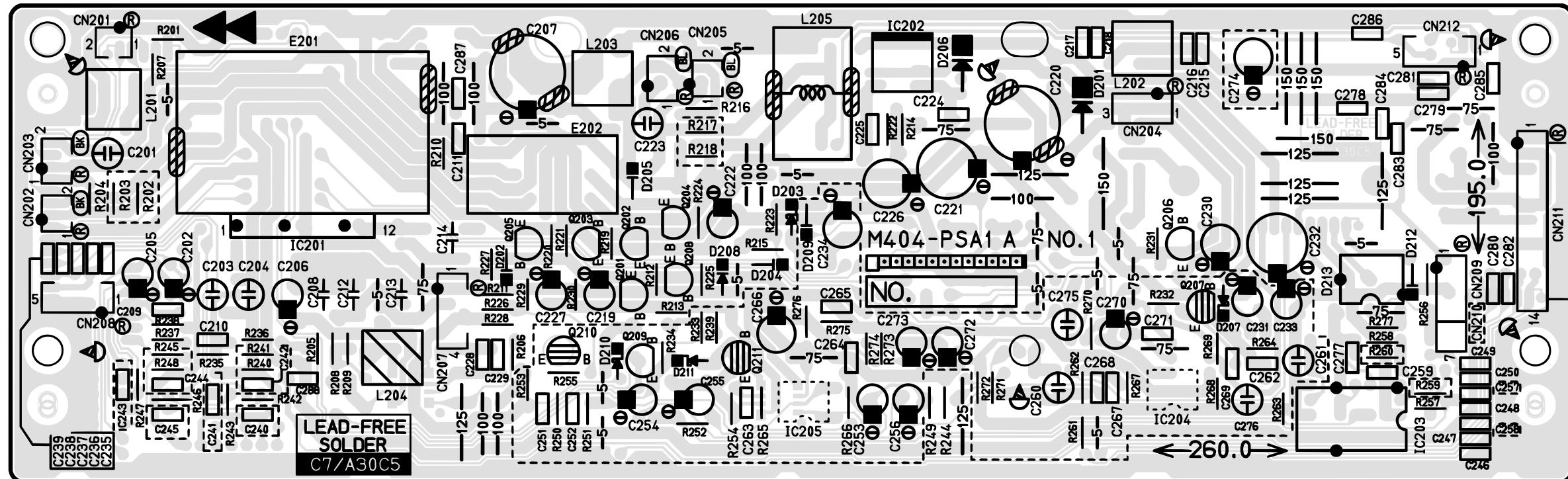


Top view

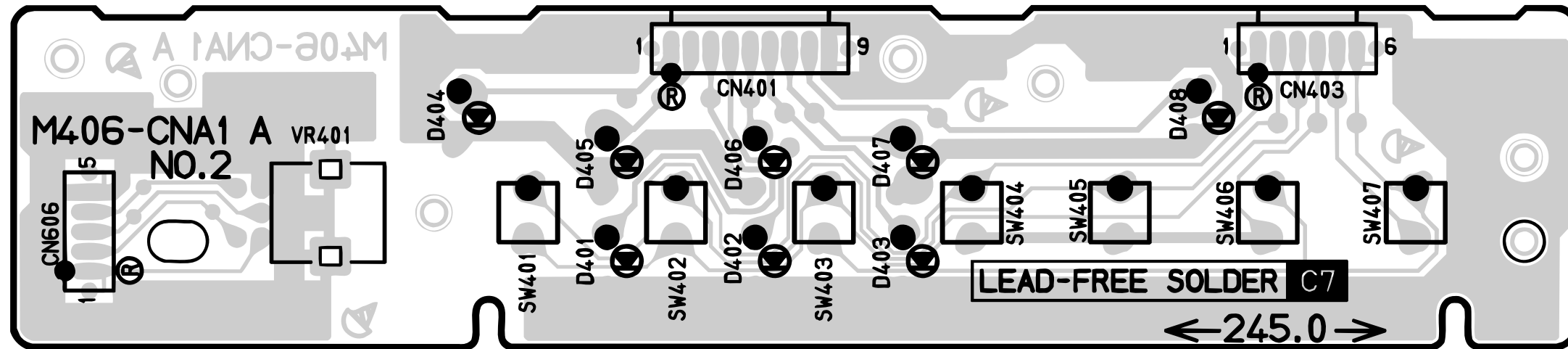


Bottom view

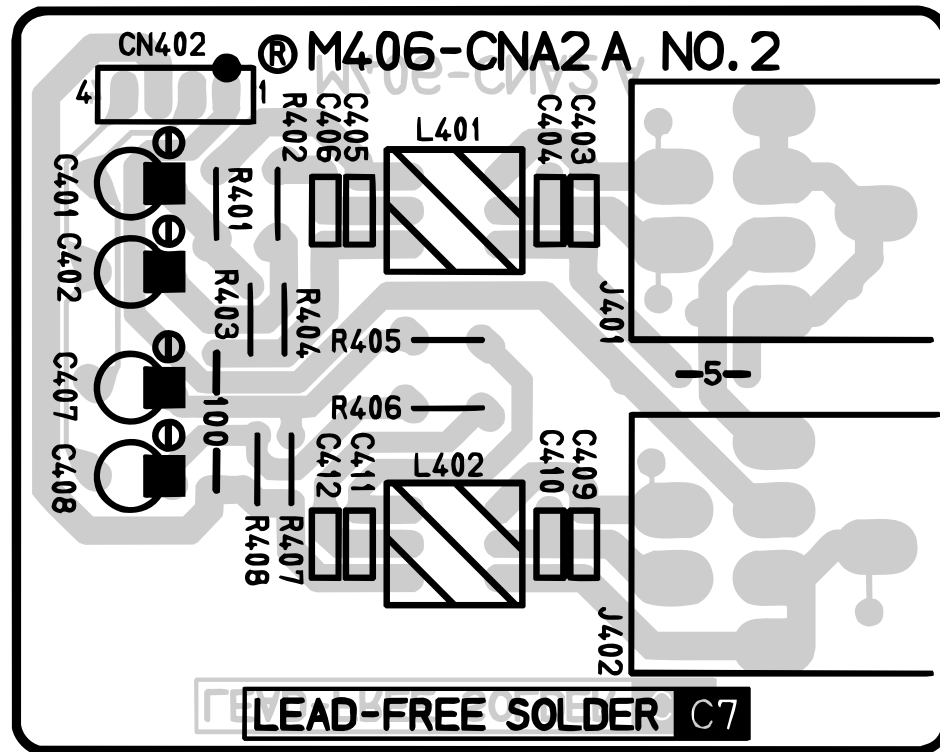
SUB PCB M404-PSA1



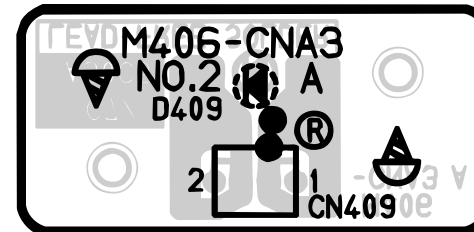
CONSOLE PCB M406-CNA1



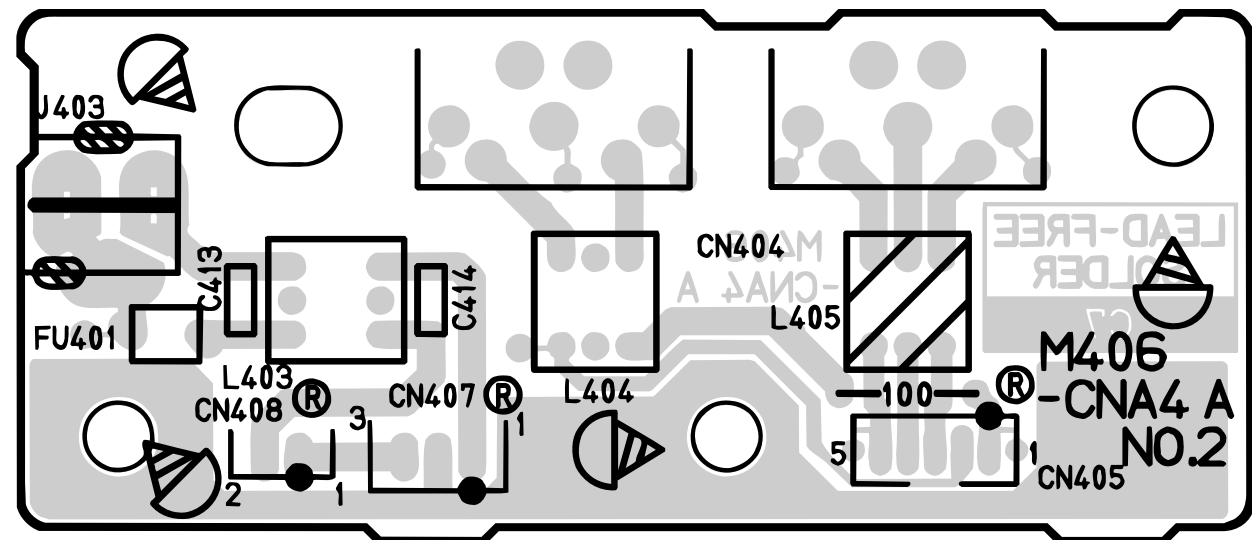
CONSOLE PCB M406-CNA2



CONSOLE PCB M406-CNA3

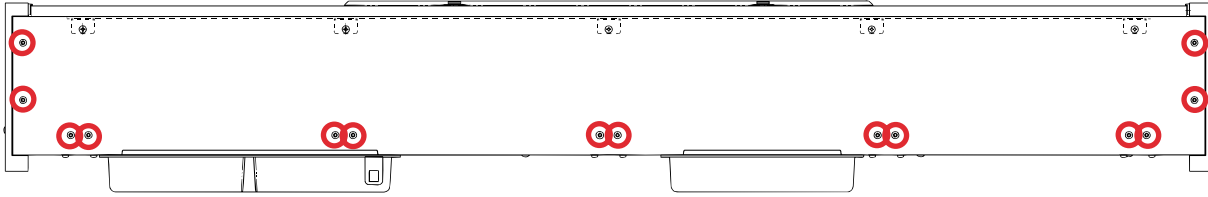


CONSOLE PCB M406-CNA4



DISASSEMBLY

1. Remove 14 screws and then the lower panel.

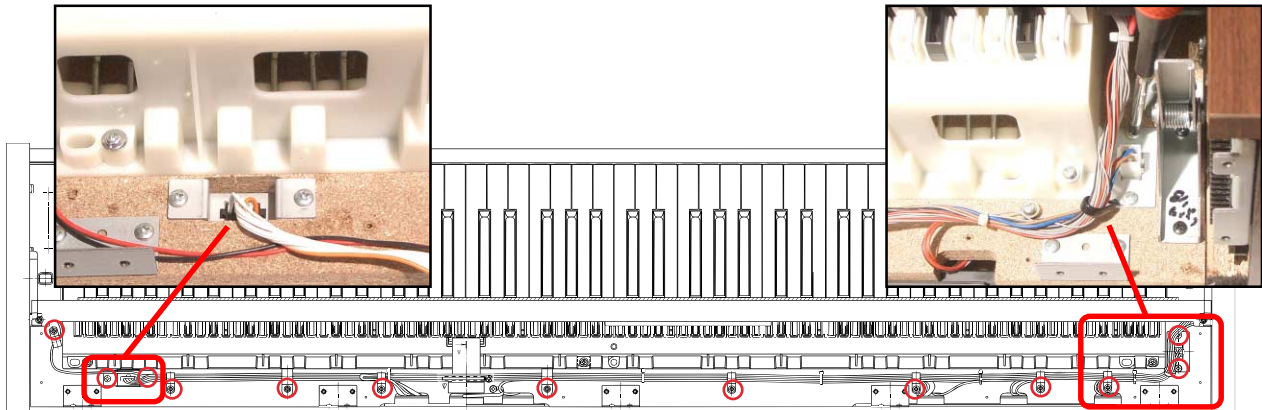


2. Remove the T-BRD-UNIT.

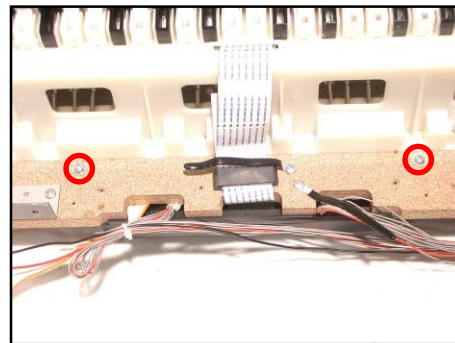
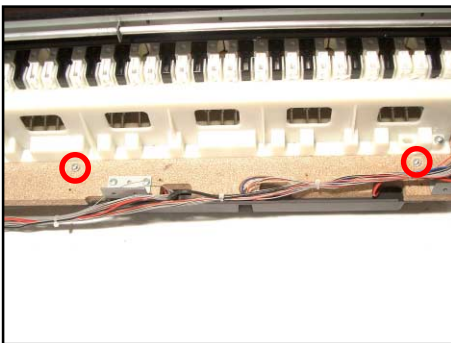


- Removing the PCBs (M404-MDA1, M406-CNA4, M404-PSA1).

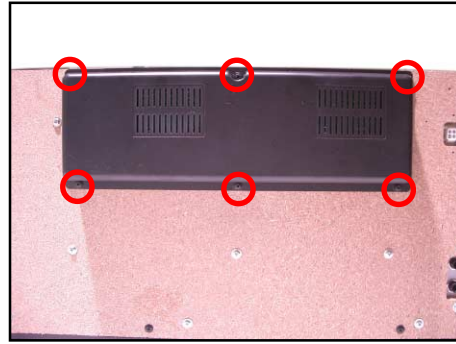
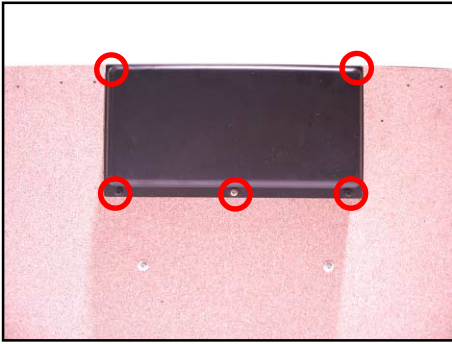
3. Remove 13 screws.



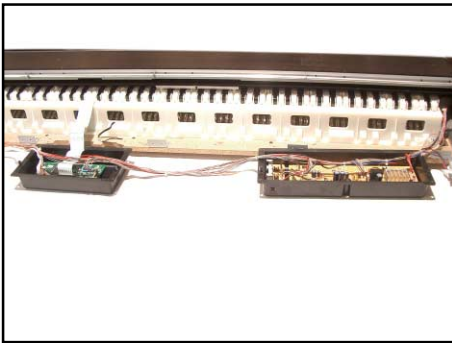
3. Remove 4 screws.



5. Remove 11 screws.

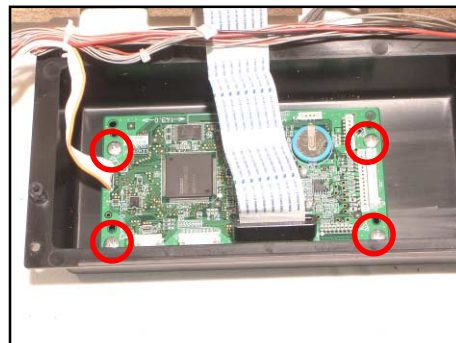
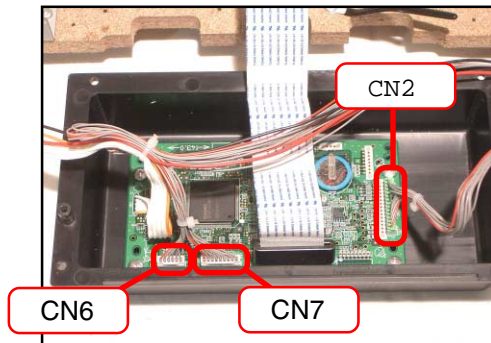


6. Remove the PCB case.

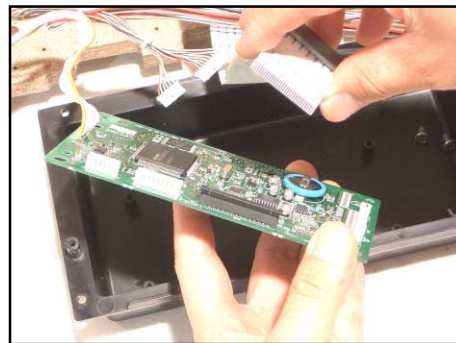
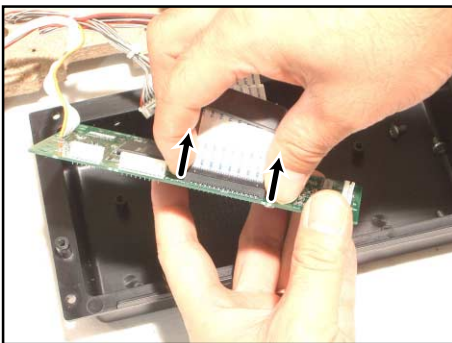


7. Remove 3 connectors.

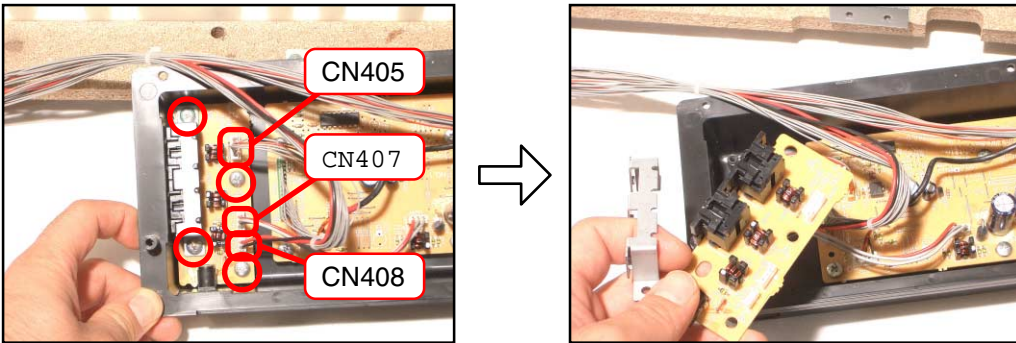
8. Remove 4 screws.



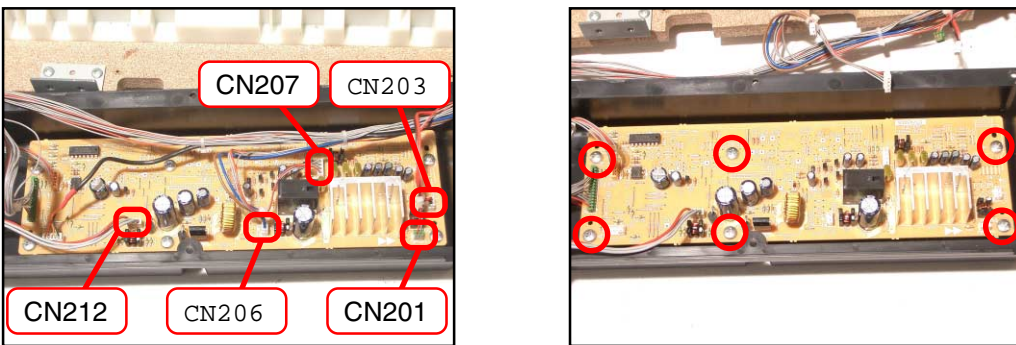
9. Remove the FPC and then the main PCB (M404-MDA1).



- 10. Remove 3 connectors and 4 screws.
- 11. Remove the console PCB (M406-CNA4).

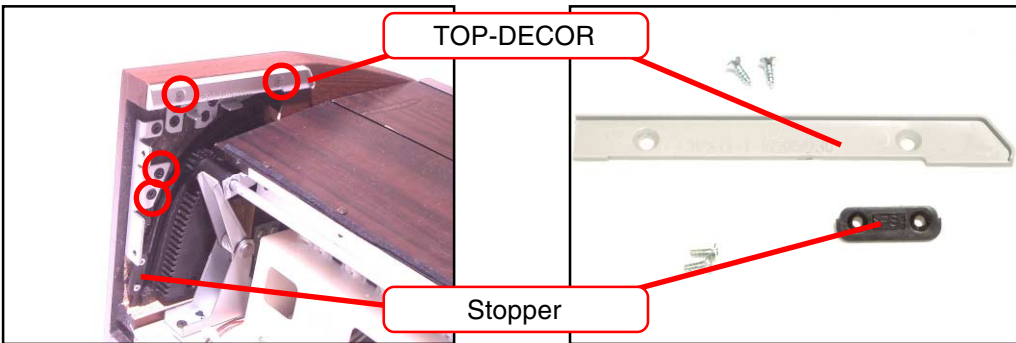


- 12. Remove 5 connectors and 6 screws.
- 13. Remove the sub PCB (M404-PSA1).

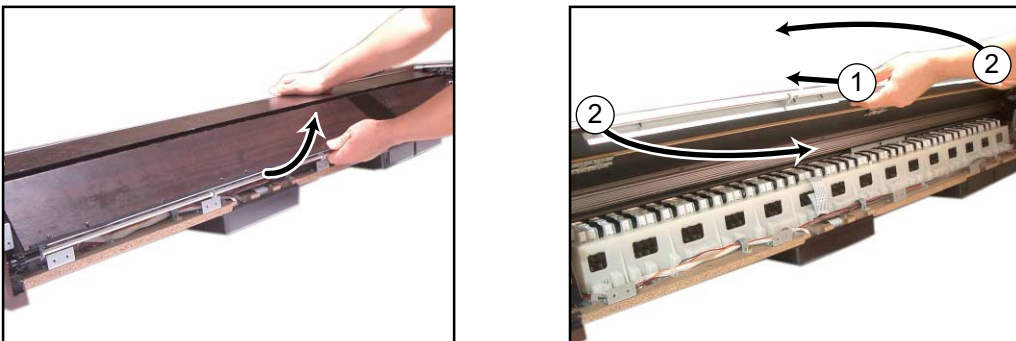


Removing the key cover.

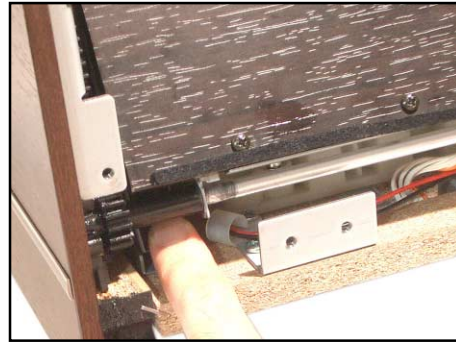
- 14. Remove 2 screws and then both sides of the stoppers.
- 15. Remove 2 screws and then both sides of the TOP-DECORs.



- 16. Remove the key cover.



* Caution while assembling the key cover.

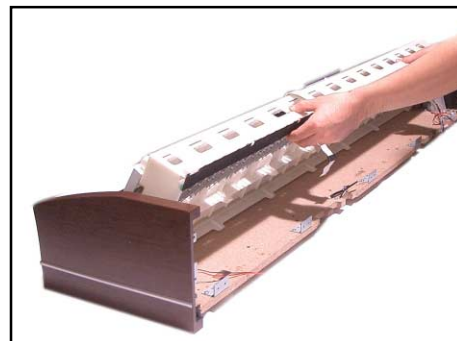
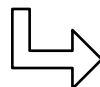
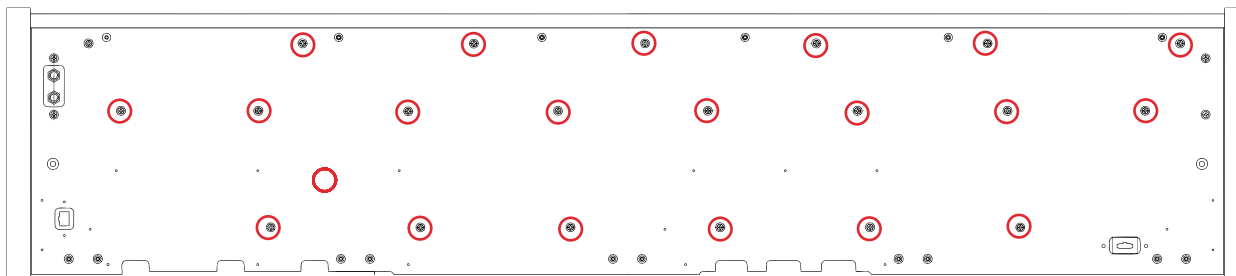
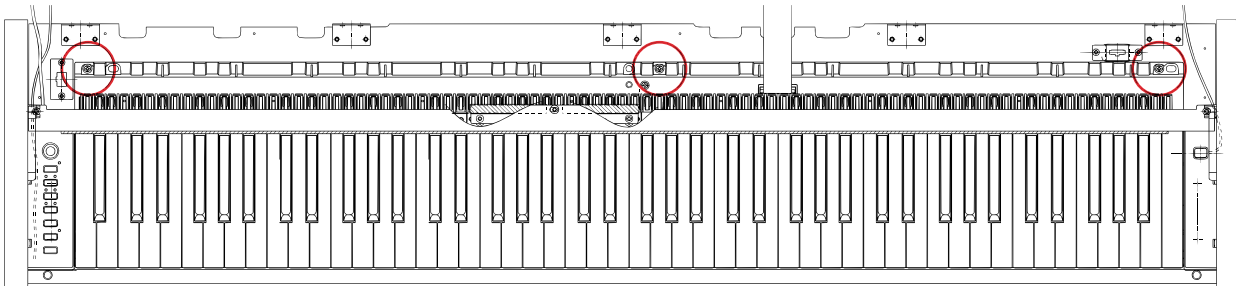


Removing the key board.

17. Remove 3 screws and then the CN-PANEL ASSY.

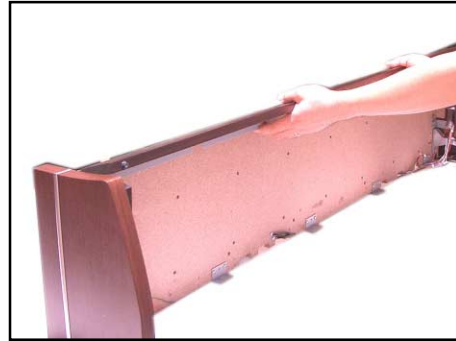
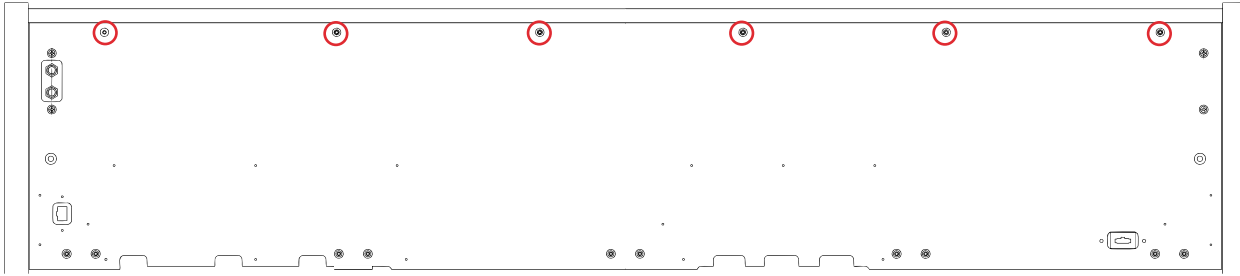


18. Remove 24 screws and then the KEY-BOARD ASSY.

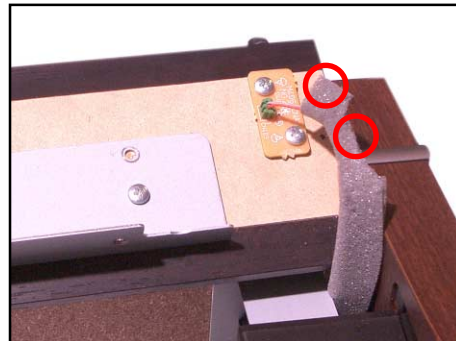


Removing the front board.

19. Remove 6 screws on the bottom, and then lift the front board up.



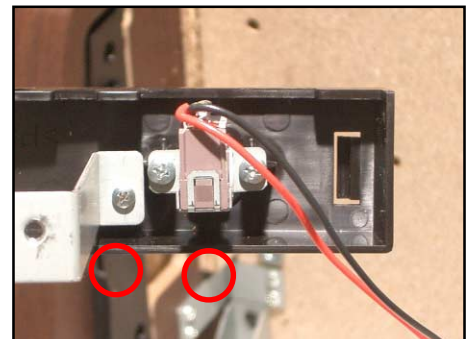
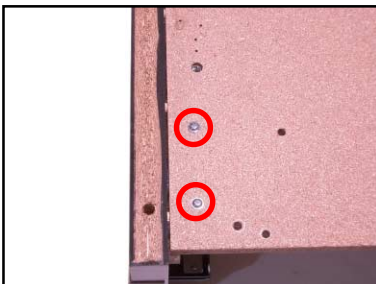
20. Remove 2 screws and then the front board.



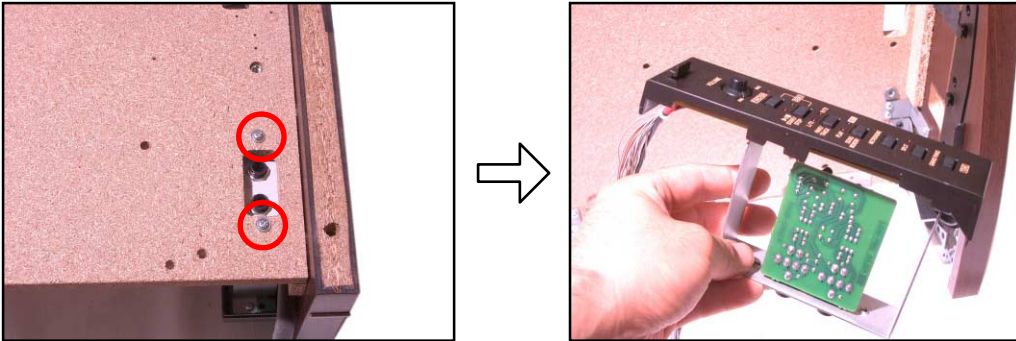
Removing the power switch.

21. Remove 2 screws on the bottom.

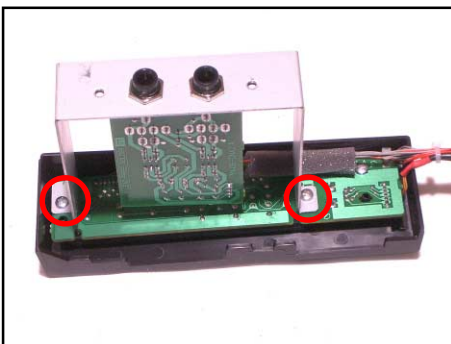
22. Remove 2 screws and then the power switch.



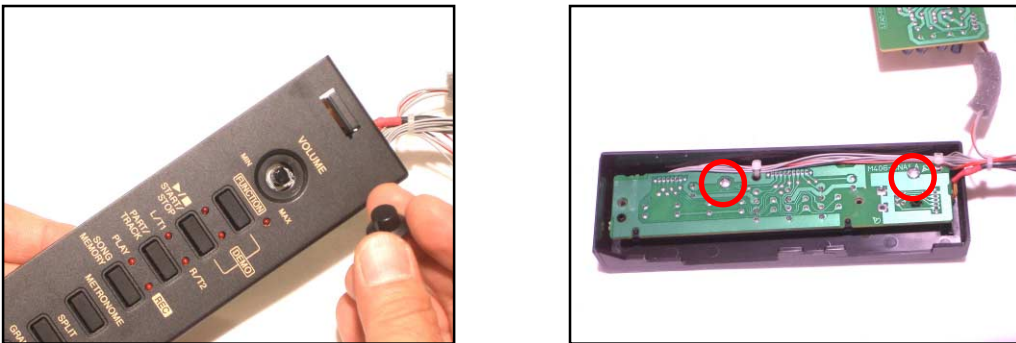
Removing the power switch.
23. Remove 2 screws on the bottom.



24. Remove 2 screws and then the PCB (M406-CNA2).



25. Remove the volume knob and 2 screws, and then the PCB (M406-CNA1).

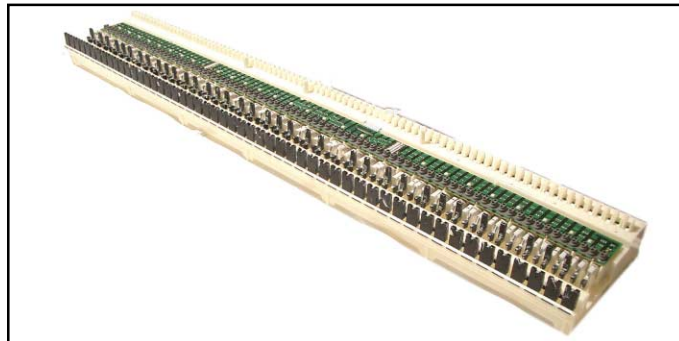
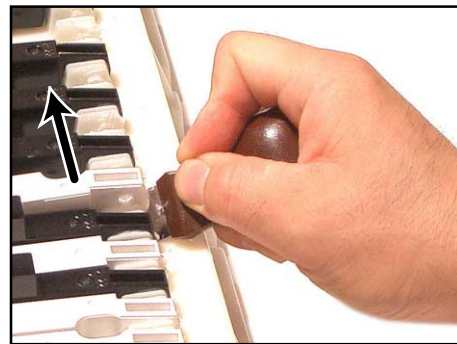
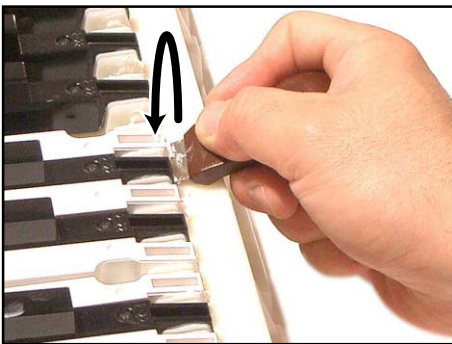


Disassembling the key board.

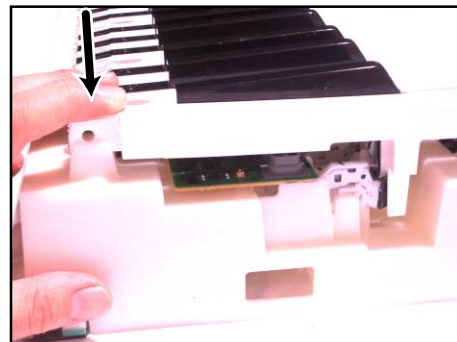
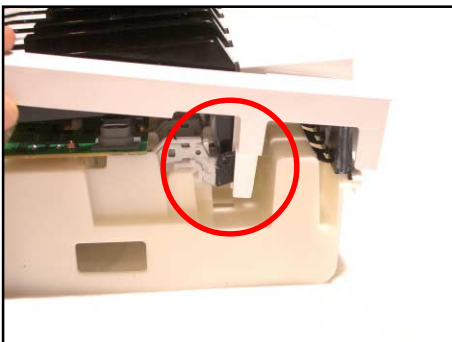
26. Remove 2 screws and then the bracket.



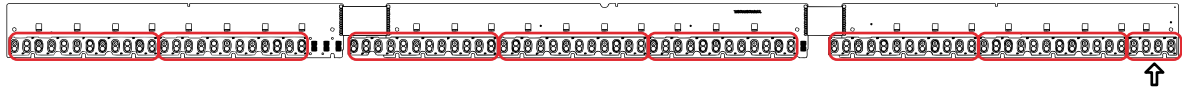
27. Remove the keys.



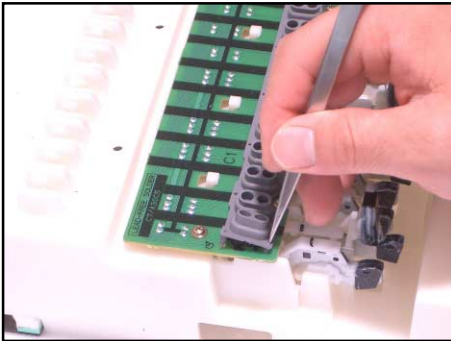
* Caution while assembling the keys.
Set the key as shown in figures below.



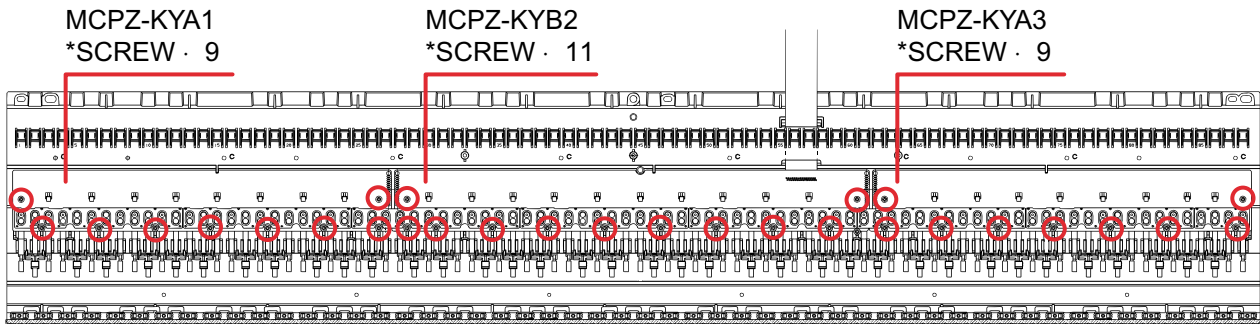
- 28. Remove 8 rubber keys.
- * One of the keys has the different length from others.



- * Caution while assembling the rubber keys.
- Push the rubber keys with the tool like the tweezers, so the projections of the rubber keys matches with the holes of the lower case.



- 29. Remove 9 screws then the PCB (MCPZ-KYA1).
- 30. Remove 11 screws then the PCB (MCPZ-KYB2).
- 31. Remove 9 screws then the PCB (MCPZ-KYA3).



DIAGNOSTIC PROGRAM

Initial Setup

1. Connect an AC adaptor.
2. Connect a pedal cord.
3. "Main" volume: MAX.

NOTE: If there is no pedal or MIDI cable, pedal or MIDI check can be skipped.

How to start diagnostic program

1. Turn on the "POWER" button while the "FUNCTION" and the "TRACK1/TRACK2" buttons are depressed.
2. Release the "FUNCTION" and the "TRACK1/TRACK2" buttons.

~~ALL the LEDs flash and the test mode boots.~~

Diagnostic program

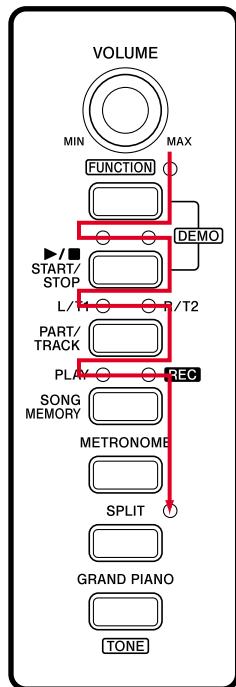
1. Automatic Test

- ① CPU RAM check
- ② DSP RAM check
- ③ ROM check

While performing ① ~ ③, TONE1, TONE2, TONE3, or START/STOP lights when an error is found in ROM. If no error is found, the confirmation chord C6 sounds.

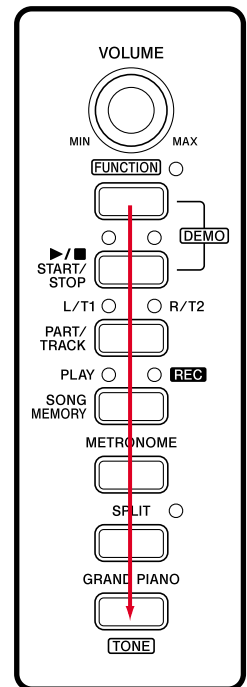
2. LED check

- ① The LEDs light in the sequence shown below when the "FUNCTION" button is pressed. LED check repeats if the "PLAY/RED" is pressed.



3. BUTTON check

- ① Press the "FUNCTION" button to perform "BUTTON check." The confirmation chord C6 sounds.
- ② Press buttons in the order following. NG tone sounds when an error is found in the buttons or when the buttons are pressed in a wrong order. This test cannot be aborted.



4. Pedal check (If there is no Pedal, this check can be skipped.)

- ① Press the "FUNCTION" button to perform the "Pedal check."
- ② Press the "SOFT" pedal. The confirmation chord C4 sounds and "LEFT/TRACK1" LED lights.
- ③ Press the "SOSTENUTO" pedal. The confirmation chord E4 sounds and "RIGHT/TRACK2" LED lights.
- ④ Press the "DAMPER" pedal. (ON HALF) The confirmation chord G4 sounds and "REC" LED lights.
- ⑤ Press the "DAMPER" pedal. (ON FULL) The confirmation chord G4 sounds and "REC" and "PLAY" LEDs lights.

5. Headphone check

- ① Press "FUNCTION" button to perform the "Headphone check."
The confirmation chord C6 sounds and "PLAY" LED lights.
- ② Connect the headphone to the LEFT jack.
"REC" LED lights.
- ③ Remove the headphone from the jack.
"PLAY" LED lights.
- ④ Connect the tuning meter to the RIGHT jack.
"REC" LED lights.
- ⑤ Press the "A4" key.
Make sure that the tuning meter is set at 440 ± 2 cents.
- ⑥ Remove the tuning meter from the jack.
"PLAY" LED lights.
- ⑦ Press "FUNCTION" button to finish the "headphone check."
The confirmation chord C6 sounds.

6. MIDI check (If there is no MIDI cable, this check can be skipped.)

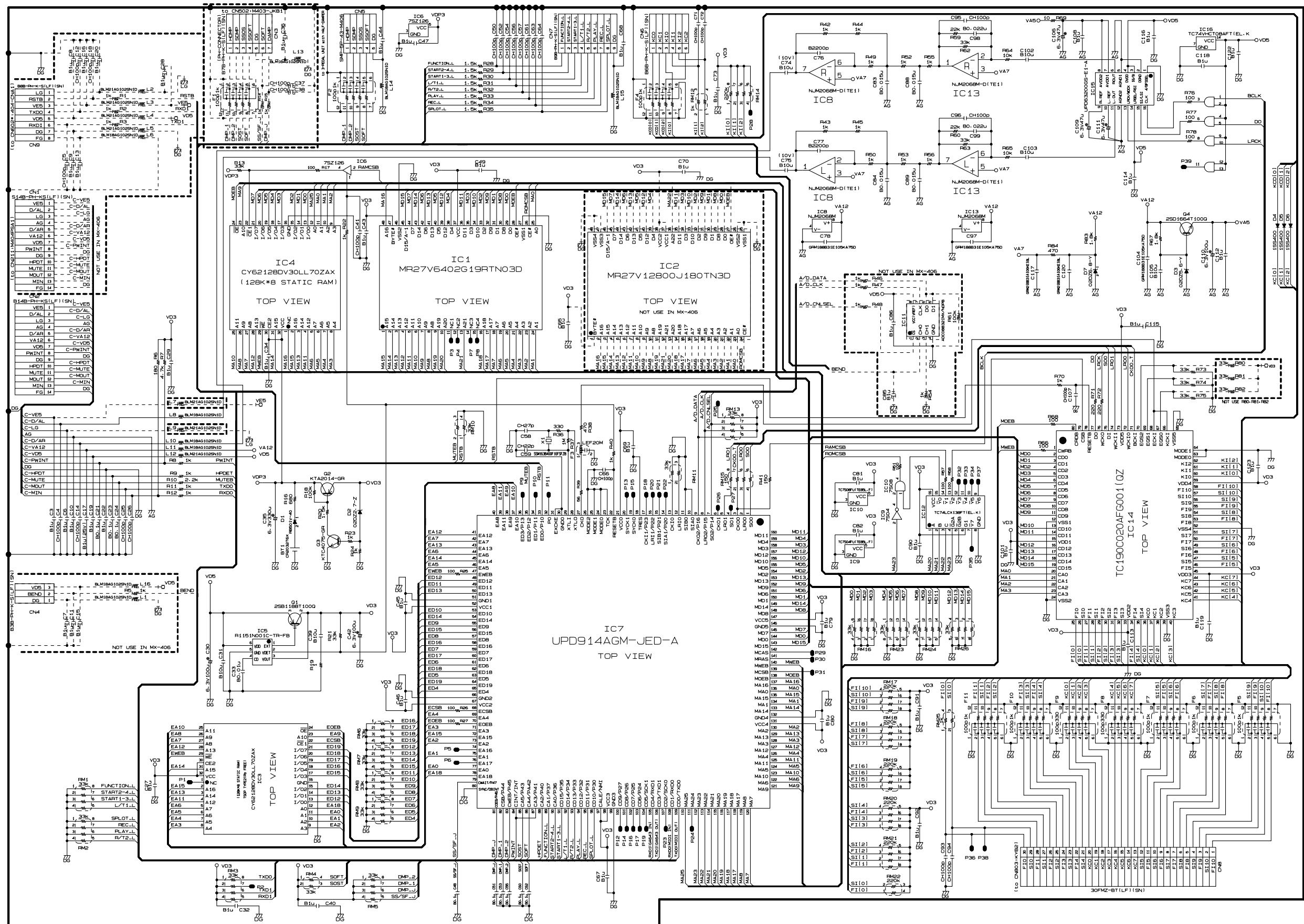
- ① Press "TONE1" button to perform the "MIDI check."
NG tone sounds.
- ② Connect a MIDI cable.
- ③ Press the "TONE1" button and make sure confirmation chord C7 sounds.
- ④ Press the "FUNCTION" button.
The confirmation chord C6 sounds twice.
- ⑤ Turn off the "POWER" button.
- ⑥ Turn on the "POWER" button.

The diagnostic program ends.

- ① Remove the Pedal unit.
- ② Remove the MIDI cable.

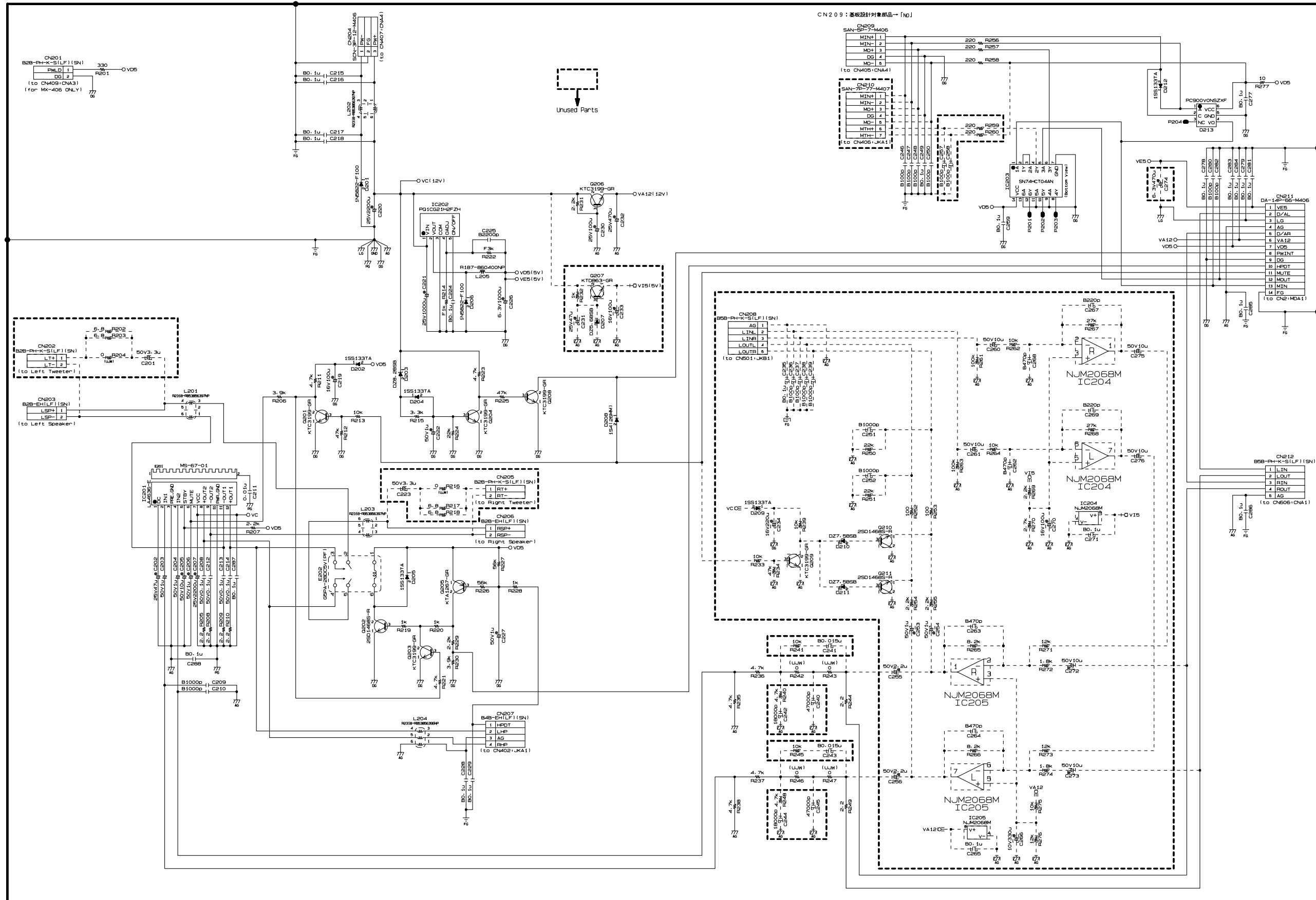
SCHEMATIC DIAGRAMS

MAIN PCB M404-MDA1



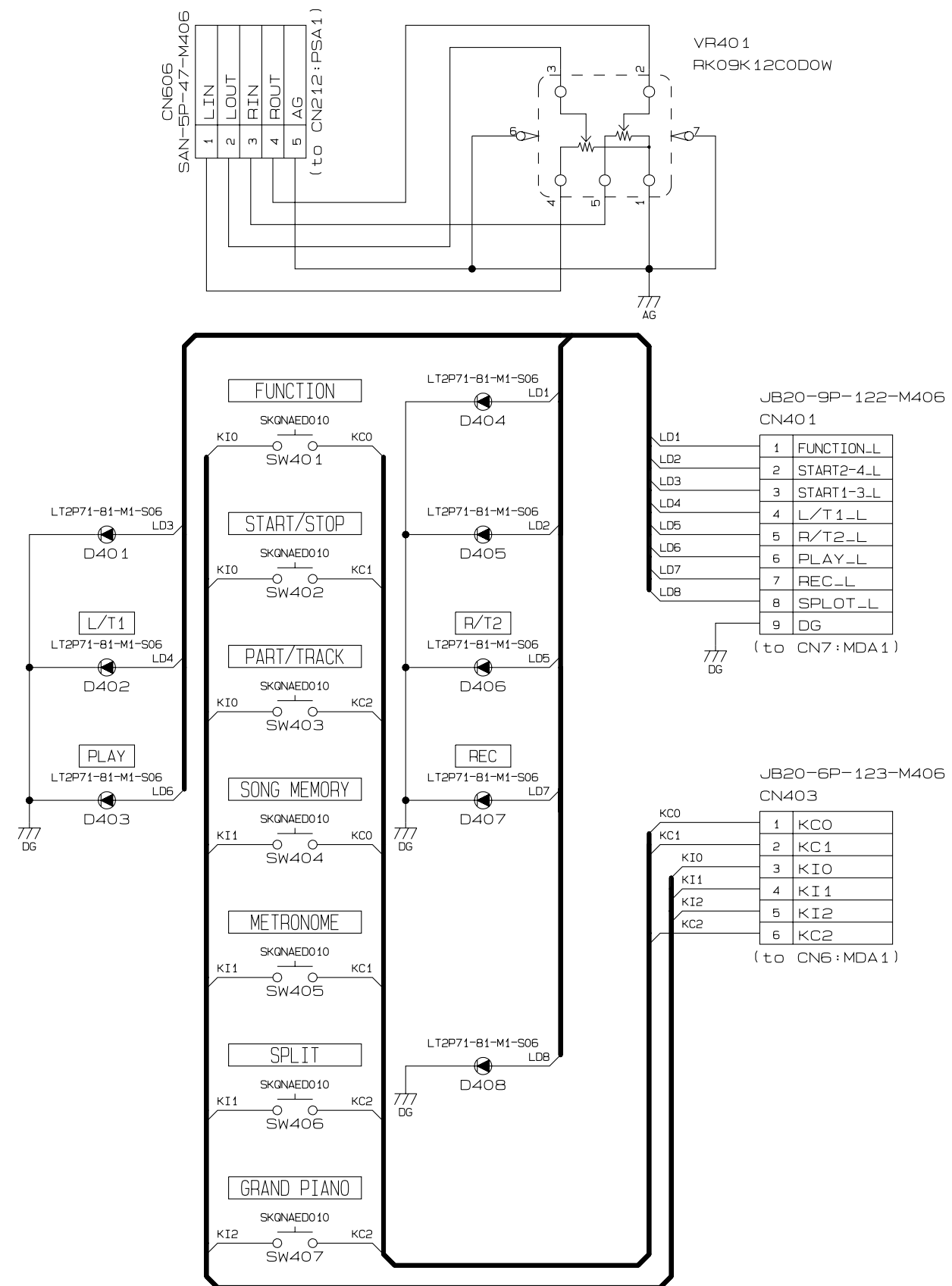
NOTE: The portions marked as "UNUSED" are not used on this model.

SUB PCB M404-PSA1

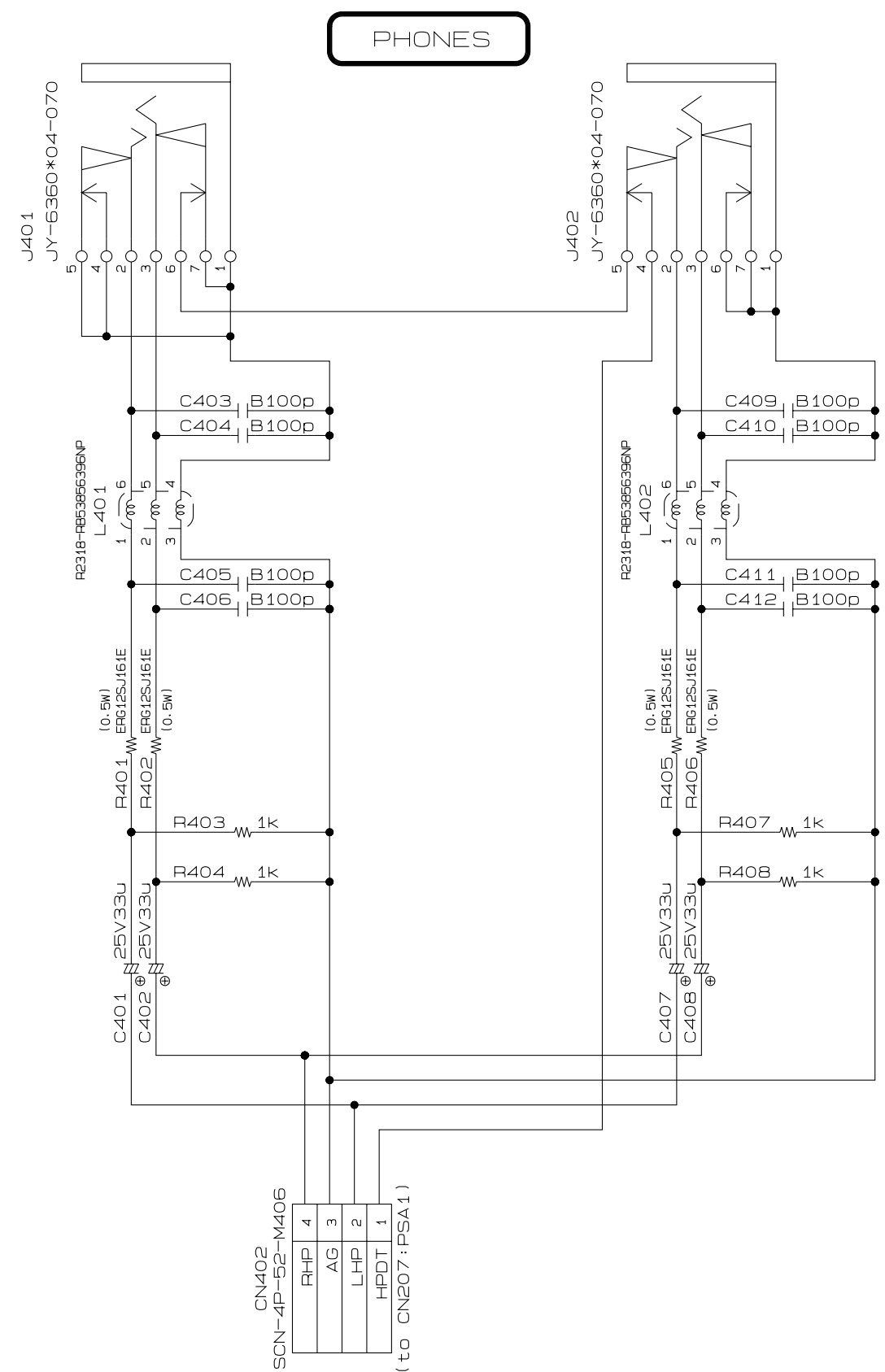


NOTE: The portions marked as "UNUSED" are not used on this model.

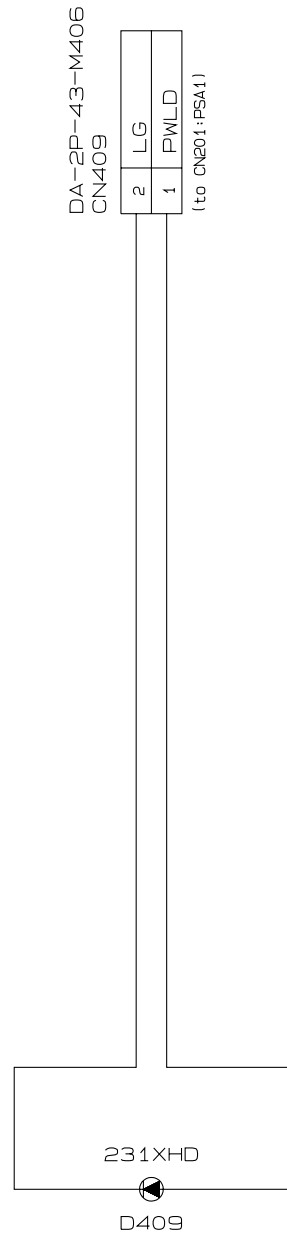
CONSOLE PCB M406-CNA1



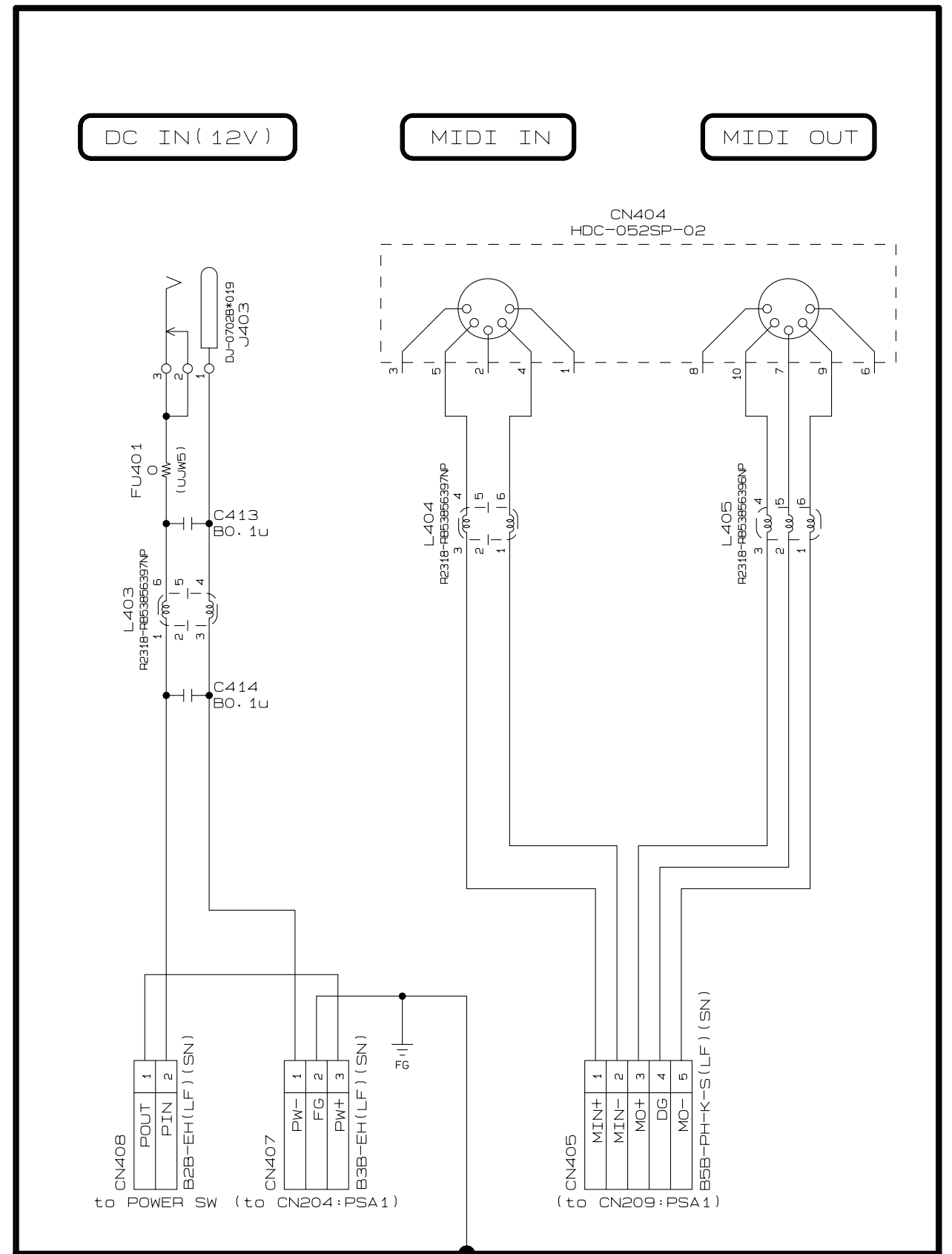
CONSOLE PCB M406-CNA2



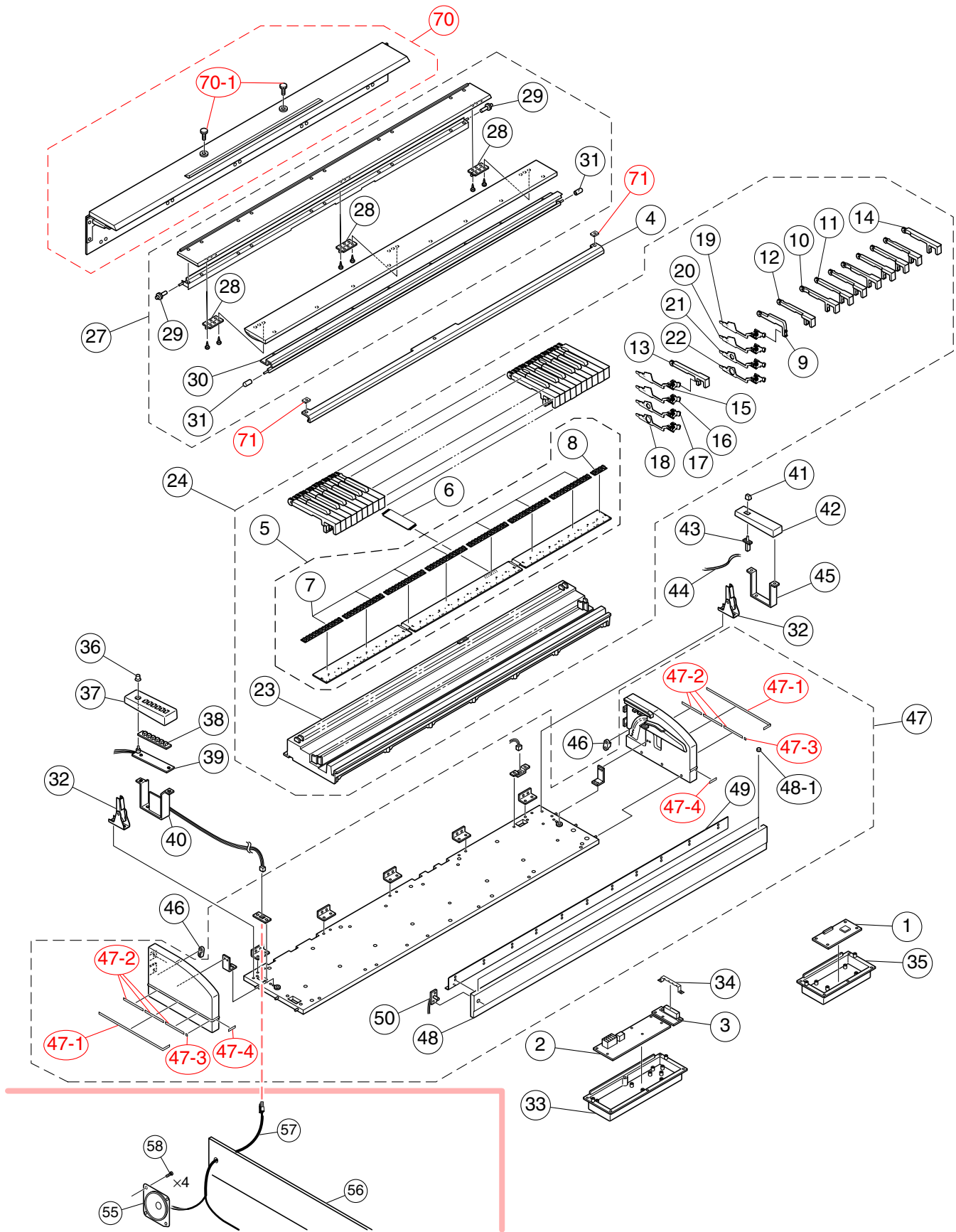
CONSOLE PCB M406-CNA3

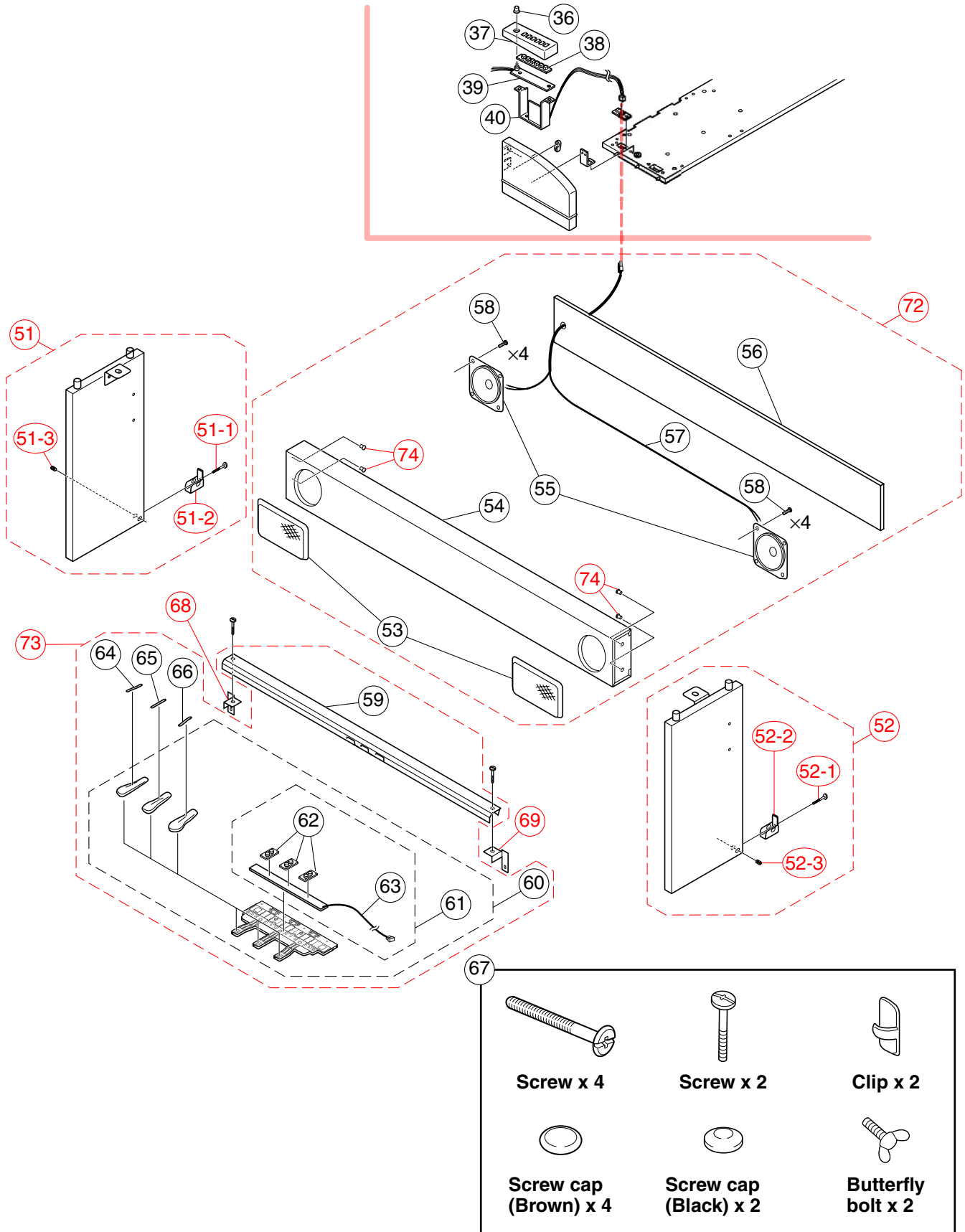


CONSOLE PCB M406-CNA4



EXPLODED VIEW





PARTS LIST

PX-700

Notes: This parts list does not include the cosmetic parts, which parts are marked with item No. "R-X" in the exploded view.

Contact our spare parts department if you need these parts for refurbish.

1. Prices and specifications are subject to change without prior notice.
2. As for spare parts order and supply, refer to the "GUIDEBOOK for Spare parts Supply", published separately.
3. The numbers in item column correspond to the same numbers in drawing.

- ~~1 PX-720_BLACK_DI_120V~~ ~~6 PX-720_CHERRY_DI_120V~~
~~2 PX-720_BLACK_DI_230V~~ ~~7 PX-720_CHERRY_DI_230V~~
~~3 PX-720_BLACK_EU~~ ~~8 PX-720_CHERRY_EU~~
~~4 PX-720_BLACK_UK~~ ~~9 PX-720_CHERRY_UK~~
~~5 PX-720_BLACK_US~~ ~~10 PX-720_CHERRY_US~~

| N | Item | Parts Code | Parts Name | Specification | QTY | Price Code | R | Remarks |
|-------------------|----------------------|------------|--------------------|---------------------|-----|------------|---|---------|
| MAIN PCB | | | | | | | | |
| N | 1 | 10213950 | PCB ASSY/MAIN | TK-RJM506265*001 | 1 | DK | A | |
| | BT | 10209154 | BATTERY/LITHIUM | CR2032T6X | 1 | AF | C | |
| N | CN5 | 10212694 | HARNESS | SMP-5P-43-M406 | 1 | AE | X | |
| | D2 | 10133383 | DIODE | 02DZ2.7-Z(TPH3) | 1 | AA | X | |
| | D3 | 10098748 | DIODE | 02DZ5.6-Y(TPH3) | 1 | AA | X | |
| | D4,D5,D6 | 10009218 | DIODE | 1SS400TE61 | 3 | AA | X | |
| | D1 | 23902576 | DIODE | RB501V-40TE-17 | 1 | AB | X | |
| | F8,F9 | 10122975 | NETWORK/R-C | EZASSB516BJ | 2 | AA | C | |
| | F2,4,5,6,7,10,11 | 10122976 | NETWORK/R-C | EZASTB63ABJ | 7 | AA | C | |
| | F3 | 30251862 | EMI FILTER | NFM51R00P206 | 1 | AC | X | |
| | IC8,13 | 10211950 | I.C | NJM2068M-D(TE1) | 2 | AC | C | |
| | IC5 | 10175415 | C-MOS IC | R1151N001C-TR-FB | 1 | AN | C | |
| | IC12 | 10197798 | IC | TC74LCX138FT(EL.K) | 1 | AI | C | |
| | IC16 | 10197802 | IC | TC74VHCT08AFT(EL.K) | 1 | AE | C | |
| | IC9 | 10197553 | IC | TC7S04FU(TE85L.F) | 1 | AA | C | |
| | IC10 | 10137770 | IC | TC7S08FU(TE85L.F) | 1 | AA | C | |
| | IC6 | 10197554 | IC | TC7SZ126FU(TE85L.F) | 1 | AE | C | |
| | IC15 | 10195928 | LSI | UPD63200GS-E1-A | 1 | AX | X | |
| | Q1 | 22592764 | TRANSISTOR | 2SB1188T100Q | 1 | AB | X | |
| | Q4 | 22530715 | TRANSISTOR | 2SD1664T100Q | 1 | AA | X | |
| | Q2 | 10202670 | TRANSISTOR | KTA2014-GR-RTK/P | 1 | AA | X | |
| | Q3 | 10207675 | TRANSISTOR | KTC4075-GR-RTK/P | 1 | AA | X | |
| | X1 | 10208977 | RESONATOR | SSM1638400F16FSFZ8 | 1 | AC | X | |
| N | D7 | 10215910 | DIODE | 02DZ6.8-Y(TPH3,F) | 1 | AA | X | |
| Sub PCB PS | | | | | | | | |
| N | 2 | 10213948 | PCB ASSY/PSA | TK-RJM506268*001 | 1 | CX | C | |
| | D201,D206 | 10209003 | DIODE | 1N5822-F100 | 2 | AB | X | |
| | D213 | 10201501 | IC | PC900V0NSZXF | 1 | AG | X | |
| | E202 | 10211947 | RELAY | G5PA-28DC5V(PF) | 1 | AN | C | |
| | IC201 | 10203081 | IC | LA4636-E | 1 | AV | X | |
| | IC202 | 10201503 | IC | PQ1CG21H2FZH | 1 | AO | X | |
| | IC203 | 10209159 | IC | SN74HCT04AN | 1 | AC | X | |
| N | L205 | 10208248 | COIL | R187-860400NP | 1 | AC | X | |
| N | L204 | 10206672 | COIL | R2318-RB53856396NP | 1 | AA | X | |
| N | L201,202,203 | 10206680 | COIL | R2318-RB53856397NP | 3 | AA | X | |
| | D208 | 10209014 | DIODE | 1S4(26MM) | 1 | AA | X | |
| | D202,204,205,212 | 10079928 | DIODE | 1SS133TA | 4 | AA | X | |
| | D203 | 10132124 | ZENER DIODE | DZ8.2BSBTA | 1 | AA | X | |
| | Q202 | 10025042 | TRANSISTOR | 2SD1468STPR | 1 | AA | C | |
| | Q205 | 10209017 | TRANSISTOR | KTA1267-GR-AT/P | 1 | AA | C | |
| | Q201,203,204,206,208 | 10206673 | TRANSISTOR | KTC3199-GR-AT/P | 5 | AA | C | |
| CONSOLE | | | | | | | | |
| N | 3 | 10213949 | PCB ASSY/CNA4 | TK-RJM506280*001 | 1 | AQ | C | |
| | L405 | 10206672 | COIL | R2318-RB53856396NP | 1 | AA | X | |
| | L403,L404 | 10206680 | COIL | R2318-RB53856397NP | 2 | AA | X | |
| N | 4 | 10213947 | PANEL ASSY/CONSOLE | TK-RJM505993*001 | 1 | BD | C | |

Notes: Q- Quantity per unit
R- Rank

- ~~1 PX-720_BLACK_DI_120V~~ ~~6 PX-720_CHERRY_DI_120V~~
~~2 PX-720_BLACK_DI_230V~~ ~~7 PX-720_CHERRY_DI_230V~~
~~3 PX-720_BLACK_EU~~ ~~8 PX-720_CHERRY_EU~~
~~4 PX-720_BLACK_UK~~ ~~9 PX-720_CHERRY_UK~~
~~5 PX-720_BLACK_US~~ ~~10 PX-720_CHERRY_US~~

| N | Item | Parts Code | Parts Name | Specification | QTY | Price Code | R | Remarks |
|-----------------------|----------------------|---------------------|---------------------------|-----------------------------|--------------|---------------|--------------|---------|
| KEY BOARD UNIT | | | | | | | | |
| N | 5 | 10208264 | PCB ASSY/KEY | TK-RJM506061*001 | 1 | CI | C | |
| | D801-854, 923-976 | 10079928 | DIODE | 1SS133TA | 108 | AA | X | |
| | D855-922 | 10079928 | DIODE | 1SS133TA | 68 | AA | X | |
| | CN803 | 10211732 | CONNECTOR | 30FMZ-ST(LF)(SN) | 1 | AG | X | |
| | 6 | 37195442 | CABLE | N30315B1B05-UL2896 | 1 | AO | C | |
| | 7 | 10133656 | RUBBER/CONTACT/AG | RJM502920-001V01 | 7 | AK | B | |
| | 8 | 10133635 | RUBBER/CONTACT/GC | RJM502921-001V01 | 1 | AG | B | |
| | 9 | 10135317 | BLACK KEY | RJM502797-001V01 | 36 | AC | C | |
| | 10 | 10135426 | WHITE KEY/CEGB | RJM502862-001V01 | 7 | AT | C | |
| | 11 | 10135427 | WHITE KEY/DFA | RJM502863-001V01 | 7 | AQ | C | |
| | 12 | 10135428 | WHITE KEY/B | RJM502794-001V01 | 1 | AG | C | |
| | 13 | 10135429 | WHITE KEY/SA | RJM502795-001V01 | 1 | AJ | C | |
| | 14 | 10135430 | WHITE KEY/SC | RJM502796-001V01 | 1 | AJ | C | |
| | 15 | 10208265 | HAMMER ASSY/W1 | TK-RJM506035*001 | 13 | AF | C | |
| | 16 | 10208266 | HAMMER ASSY/W2 | TK-RJM506036*001 | 13 | AF | C | |
| | 17 | 10208267 | HAMMER ASSY/W3 | TK-RJM506037*001 | 13 | AF | C | |
| | 18 | 10208269 | HAMMER ASSY/W4 | TK-RJM506038*001 | 13 | AF | C | |
| | 19 | 10208275 | HAMMER ASSY/B1 | TK-RJM506039*001 | 9 | AE | C | |
| | 20 | 10208281 | HAMMER ASSY/B2 | TK-RJM506040*001 | 9 | AE | C | |
| | 21 | 10208286 | HAMMER ASSY/B3 | TK-RJM506041*001 | 9 | AE | C | |
| | 22 | 10208290 | HAMMER ASSY/B4 | TK-RJM506042*001 | 9 | AE | C | |
| N | 23 | 10204304 | CHASSIS/KEY | RJM505515-001V01 | 1 | BX | C | |
| N | 24 | 10213920 | KEY UNIT | TK-RJM506362*001 | 1 | EC | B | |
| MAIN CASE UNIT | | | | | | | | |
| N | 25 | 10213944 | BOARD ASSY/TOP | TK-RJM505995*001 | 4 | CI | C | |
| N | 26 | 10214383 | BACK BOARD | RJM505679-001V01 | 4 | BH | X | |
| N | 27 | 10213943 | COVER ASSY/KEY | TK-RJM505994*001 | 1 | DG | C | |
| N | 28 | 10214305 | HINGE | RJM505888-001V01 | 3 | AH | C | |
| N | 29 | 10211850 | GEAR | RJM505897-001V01 | 2 | AA | C | |
| N | 30 | 10213955 | COVER ASSY/FRONT | TK-RJM506319*001 | 1 | CL | C | |
| N | 31 | 10211851 | SLIDE CAP | RJM505899-001V01 | 2 | AA | C | |
| N | 32 | 10213945 | DAMPER ASSY | TK-RJM506119*001 | 2 | AT | C | |
| N | 33 | 10211856 | BOX/PCB | RJM505923-001V01 | 1 | AO | X | |
| N | 34 | 10214297 | BRACKET/MIDI | RJM506019-001V01 | 1 | AC | X | |
| N | 35 | 10211857 | BOX/PCB | RJM505924-001V01 | 1 | AL | X | |
| | 36 | 10052232 | KNOB/RTR | M341402-1 | 1 | AE | C | |
| N | 37 | 10215187 | SIDE BLOCK/LEFT | RJM505781-001V01 | 1 | AE | C | |
| N | 38 | 10211863 | RUBBER KEY | RJM505783-001V01 | 1 | AD | C | |
| N | 39 | 10213956 | PCB ASSY/CNA1 | TK-RJM506271*001 | 1 | BL | C | |
| | VR401 | 69308726 | POTENTIOMETER | RK09K12C0D0W | 1 | AI | X | |
| | D401-408 | 10171338 | LED | LT2P71-81-M1-S06 | 8 | AA | C | |
| | SW401-407 | 10047536 | TACT SWITCH | SKQNAED010 | 7 | AA | C | |
| N | 40 | 10213957 | PCB ASSY/CNA2 | TK-RJM506274*001 | 1 | BA | C | |
| N | CN402 | 10212787 | HARNESS | SCN-4P-52-M406 | 1 | AC | X | |
| | J401,402 | 10171449 | CONNECTOR | JY-6360*04-070 | 2 | AE | C | |
| N | L401,402 | 10206672 | COIL | R2318-RB53856396NP | 2 | AA | X | |
| | 41 | 69245260 | BUTTON/POWER | M340318-1 | 1 | AA | C | |
| N | 42 | 10215188 | SIDE BLOCK/RIGHT | RJM505782-001V01 | 1 | AE | C | |
| | 43 | 34121827 | POWER SWITCH | SDDL1-A2-D | 1 | AM | C | |
| N | 44 | 10212697 | HARNESS | EH-2P-123-M406 | 1 | AC | X | |
| N | 45 | 10214570 | SIDE BRACKET/RIGHT | RJM505896-001V01 | 1 | AD | X | |

Notes: Q- Quantity per unit
R- Rank

- ~~1 PX-720_BLACK_DI_120V~~ ~~6 PX-720_CHERRY_DI_120V~~
~~2 PX-720_BLACK_DI_230V~~ ~~7 PX-720_CHERRY_DI_230V~~
~~3 PX-720_BLACK_EU~~ ~~8 PX-720_CHERRY_EU~~
~~4 PX-720_BLACK_UK~~ ~~9 PX-720_CHERRY_UK~~
~~5 PX-720_BLACK_US~~ ~~10 PX-720_CHERRY_US~~

| N | Item | Parts Code | Parts Name | Specification | QTY | Price Code | R | Remarks |
|---|-------|------------|--------------------|------------------|-----|------------|---|---------------------|
| N | 46 | 10214314 | STOPPER | RJM505997-001V01 | 2 | AA | C | |
| N | 47 | 10213946 | CASE ASSY/MIDDLE | TK-RJM505989*001 | 1 | DI | C | |
| N | 47-1 | 10244489 | SIDE-DECOR-M406 | RJM505998-002V01 | 2 | AD | C | |
| N | 47-2 | 10214315 | D-TAPE-6-80 | RJM506385-001V01 | 6 | AA | C | |
| N | 47-3 | 10214317 | D-TAPE-6-10 | RJM506386-001V01 | 2 | AA | C | |
| N | 47-4 | 10214316 | D-TAPE-6-22 | RJM506390-001V01 | 2 | AA | C | |
| N | 48 | 10214382 | FRONT BOARD | RJM505676-001V01 | 1 | BM | C | |
| N | 48-1 | 10222257 | CUSHION | SJ-1038(BLACK) | 2 | AA | C | |
| N | 49 | 10196297 | BRACKET/KEY | RJM505578-001V01 | 1 | AX | X | |
| N | 50 | 10213958 | PCB ASSY/CNA3 | TK-RJM506277*001 | 1 | AF | C | |
| N | CN409 | 10212695 | HARNESS | DA-2P-43-M406 | 1 | AB | X | |
| N | D409 | 10203050 | LED | 231XHD | 1 | AA | C | |
| N | 70 | 10270315 | BOARD UNIT/TOP | TK-RJM506133*001 | 1 | CQ | C | |
| N | 70-1 | 10218670 | SCREW/STAND | RJM506168-001V02 | 2 | AC | C | |
| N | 71 | 58614294 | NUT | USN-4015 | 2 | AB | C | CN PANEL-SIDE BLOCK |
| STAND | | | | | | | | |
| N | 51 | 10213931 | BOARD ASSY/LEFT | TK-RJM506115*001 | 1 | CM | C | |
| N | 51-1 | 10195926 | BOLT | MU-0386353 | 1 | AB | C | |
| N | 51-2 | 10214311 | BRACKET/ST | RJM505788-002V01 | 1 | AM | C | |
| N | 51-3 | 10195925 | CROSS NUT | MU-0370163 | 1 | AD | C | |
| N | 52 | 10213940 | BOARD ASSY/RIGHT | TK-RJM506116*001 | 1 | CM | C | |
| N | 52-1 | 10195926 | BOLT | MU-0386353 | 1 | AB | C | |
| N | 52-2 | 10214311 | BRACKET/ST | RJM505788-002V01 | 1 | AM | C | |
| N | 52-3 | 10195925 | CROSS NUT | MU-0370163 | 1 | AD | C | |
| N | 53 | 10213951 | BLOCK ASSY/SPEAKER | TK-RJM506370*001 | 2 | AW | C | |
| N | 54 | 10214391 | SPEAKER BOX | RJM505680-001V01 | 1 | CG | C | |
| N | 55 | 10217886 | SPEAKER | C12JA27 | 2 | AX | B | |
| N | 56 | 10214392 | BACK BOARD/SPEAKER | RJM505681-001V01 | 1 | BH | X | |
| N | 57 | 10127139 | CONNECTOR | ELP-4P-134-M417 | 1 | AL | C | |
| N | 58 | 10203752 | NUT | N-SF-3Z3 | 8 | AA | X | |
| N | 59 | 10214390 | BOARD/PEDAL | RJM506207-001V01 | 1 | BV | C | |
| N | 60 | 10213953 | PEDAL UNIT | TK-RJM506139*002 | 1 | BV | C | |
| NOTE: Without PEDAL/TOP (Item 64, 65, 66) | | | | | | | | |
| N | 61 | 10213954 | PCB ASSY/PEDAL | TK-RJM506143*001 | 1 | AT | C | |
| N | 62 | 10209706 | RUBBER/KEY | RJM505734-001V01 | 3 | AA | C | |
| N | 63 | 10212698 | HARNESS | SMR-5P-155-MP5 | 1 | AM | C | |
| N | 64 | 10211859 | PEDAL/TOP/L | RJM506005-001V01 | 1 | AC | C | |
| N | 65 | 10211858 | PEDAL/TOP | RJM506004-001V01 | 1 | AC | C | |
| N | 66 | 10211860 | PEDAL/TOP/R | RJM506006-001V01 | 1 | AC | C | |
| N | 67 | 10213942 | SCREW SET | TK-RJM506374*001 | 1 | AZ | C | |
| N | 68 | 10214308 | BRACKET/PEDAL/L | RJM505715-002V01 | 1 | AG | C | |
| N | 69 | 10214309 | BRACKET/PEDAL/R | RJM505716-002V01 | 1 | AG | C | |
| N | 72 | 10281530 | BOX ASSY/SPEAKER | TK-RJM506117*001 | 1 | DX | C | |
| N | 72 | 10286849 | BOX ASSY/SPEAKER | TK-RJM506117*002 | 1 | DU | C | For Korea |
| N | 72 | 10286850 | BOX ASSY/SPEAKER | TK-RJM506117*003 | 1 | DV | C | For EU/UK |
| N | 73 | 10281528 | BOX ASSY/PEDAL | TK-RJM506118*001 | 1 | DM | C | |
| N | 73 | 10288054 | BOX ASSY/PEDAL | TK-RJM506118*002 | 1 | DO | C | For EU |
| N | 74 | 10246601 | NUT | YD-0026129 | 4 | AD | C | |

Notes: Q- Quantity per unit
R- Rank

- | | | | |
|---|---------------------------------|----|----------------------------------|
| 1 | PX-720_BLACK_DI_120V | 6 | PX-720_CHERRY_DI_120V |
| 2 | PX-720_BLACK_DI_230V | 7 | PX-720_CHERRY_DI_230V |
| 3 | PX-720_BLACK_EU | 8 | PX-720_CHERRY_EU |
| 4 | PX-720_BLACK_UK | 9 | PX-720_CHERRY_UK |
| 5 | PX-720_BLACK_US | 10 | PX-720_CHERRY_US |

| N | Item | Parts Code | Parts Name | Specification | QTY | Price Code | R | Remarks |
|------------------|------|------------|--------------|------------------|-----|------------|---|-----------|
| ACCESSORY | | | | | | | | |
| | - | 10128659 | AC ADAPTOR | AD-12UL-TC2(D) | 1 | CE | C | 120V |
| | - | 10168517 | AC ADAPTOR | AD-12FL-TC3(D) | 1 | CD | C | 230V |
| N | - | 10213941 | STAND/MUSIC | TK-RJM506318*001 | 1 | BX | C | |
| | - | 10100792 | CORD SET | INQ.1258(1) | 1 | AP | C | Korea |
| | - | 10045706 | CORD SET | EC2NC-M001A | 1 | AM | C | Euro type |
| | - | 10045707 | CORD SET | BC2NC-M001A | 1 | BD | C | UK type |
| N | - | 10214578 | LABEL/RATING | RJM501679-025V02 | 1 | AA | | |

Notes: Q- Quantity per unit
R- Rank

Ver. 1 : Jan. 2006

- Replacement of the EXPLODED VIEW (P21) and PARTS LIST (P25)

Ver. 2 : Apr. 2006

- Replacement of the EXPLODED VIEW (P20) and PARTS LIST (P25)

Ver. 3 : Dec. 2006

- Correction of the DISASSEMBLY (P6)
- Correction of the EXPLODED VIEW (P20)
- Correction of the PARTS LIST (P25)

Ver. 4 : Oct. 2007

- Correction of the EXPLODED VIEW (P20, 21)
- Correction of the PARTS LIST (P25)

Ver. 5 : Dec. 2007

- Correction of the DIAGNOSTIC PROGRAM (P14)
- Correction of the EXPLODED VIEW (P20 to P21)
- Correction of the PARTS LIST (P25)

Ver. 6 : Oct. 2008

- Correction of the EXPLODED VIEW (P20)
- Correction of the PARTS LIST (P25)

Ver. 7 : Dec. 2008

- Correction of the EXPLODED VIEW (P20)
- Correction of the PARTS LIST (P24)

Ver. 8 : Jun. 2009

- Wrong model name PX-720 is deleted. (P23 to P26)

Ver. 9 : Jan. 2010

- Correction of the PARTS LIST (P25)

CASIO COMPUTER CO.,LTD.

Overseas Service Division

6-2, Hon-machi 1-Chome
Shibuya-ku, Tokyo 151-8543, Japan